

BOSTON PUBLIC LIBRARY WIRELESS INTERNET ACCESS DHCP PROCEDURE Mac OS 10

Wireless access is available at all Boston Public Library locations. Direct plug-in ports are only available in Bates Hall in the Central Library.

Make sure that your **AirPort card** or **external PC card** is installed properly per the manufacturer's instructions. In the case of an **external PC card** for a **non-AirPort** capable Mac OS laptop, make sure that the **PC card** is firmly inserted into the **PC card** slot.

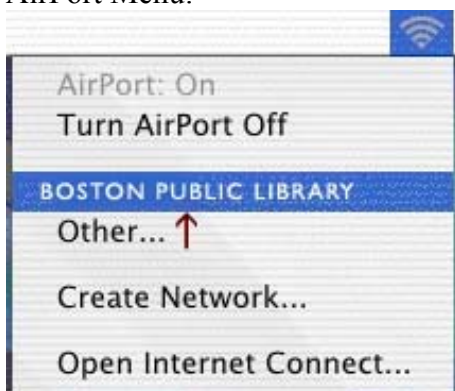
***Special Note:** If you are using a card in a non-AirPort capable laptop, refer to the manufacturer's driver instructions for installation and configuration, as this documentation refers only to computers that are AirPort-capable.*

Mac OS X includes the drivers that are necessary to use **AirPort** for network connectivity. All that need be done is select an **active wireless network** and make sure **Network** settings are correct for the wireless network.

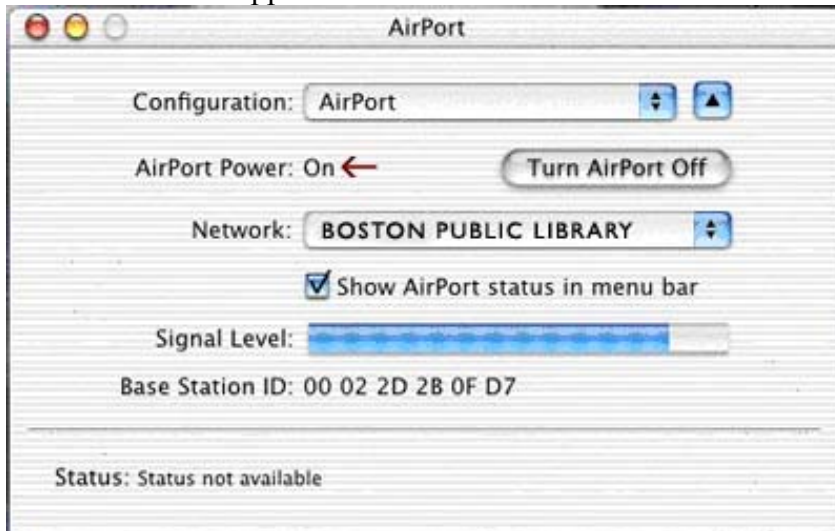
Select a wireless network:

1. Using either the AirPort Menu or the Internet Connect application, you can select a wireless network that is in range. If AirPort is off, you will need to select "**Turn Airport On**" before you can proceed.

AirPort Menu:

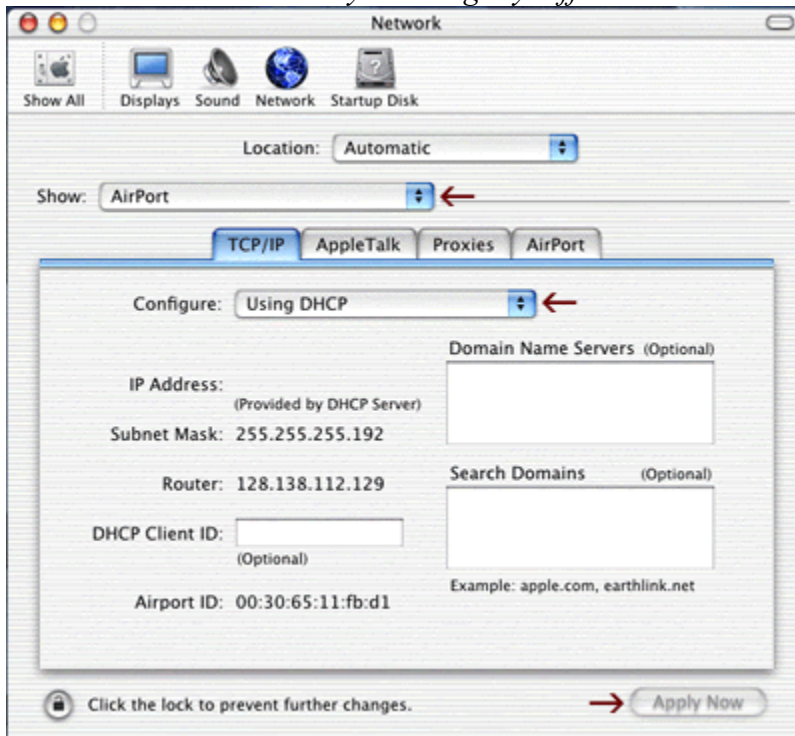


Internet Connect Application:



2. Select the wireless network from the list of available networks.

3. Next, choose **System Preferences** from the Apple menu. Once the application is started, select **Network**. Click on the **TCP/IP** tab, and you should see the following selections. *Your screen may look slightly different.*



4. Make sure that the **Show:** menu is set to **AirPort**, and that the **Configure** menu in the **TCP/IP** tab is set to **Using DHCP**.

*If AirPort doesn't appear in the **Show** menu, choose **Active Network Ports** and activate AirPort. Then choose **Airport** from the **Show** menu.*

5. Click the **Apply Now** button at the bottom of the panel to save the changes you just made and quit the **System Preferences** application.

NOTE: If you have installed a Personal Firewall System (PFS) you need to be sure that your PFS is not blocking BPL Internet Access. You may need authorize access or to disable the PFS while you are using the connection.