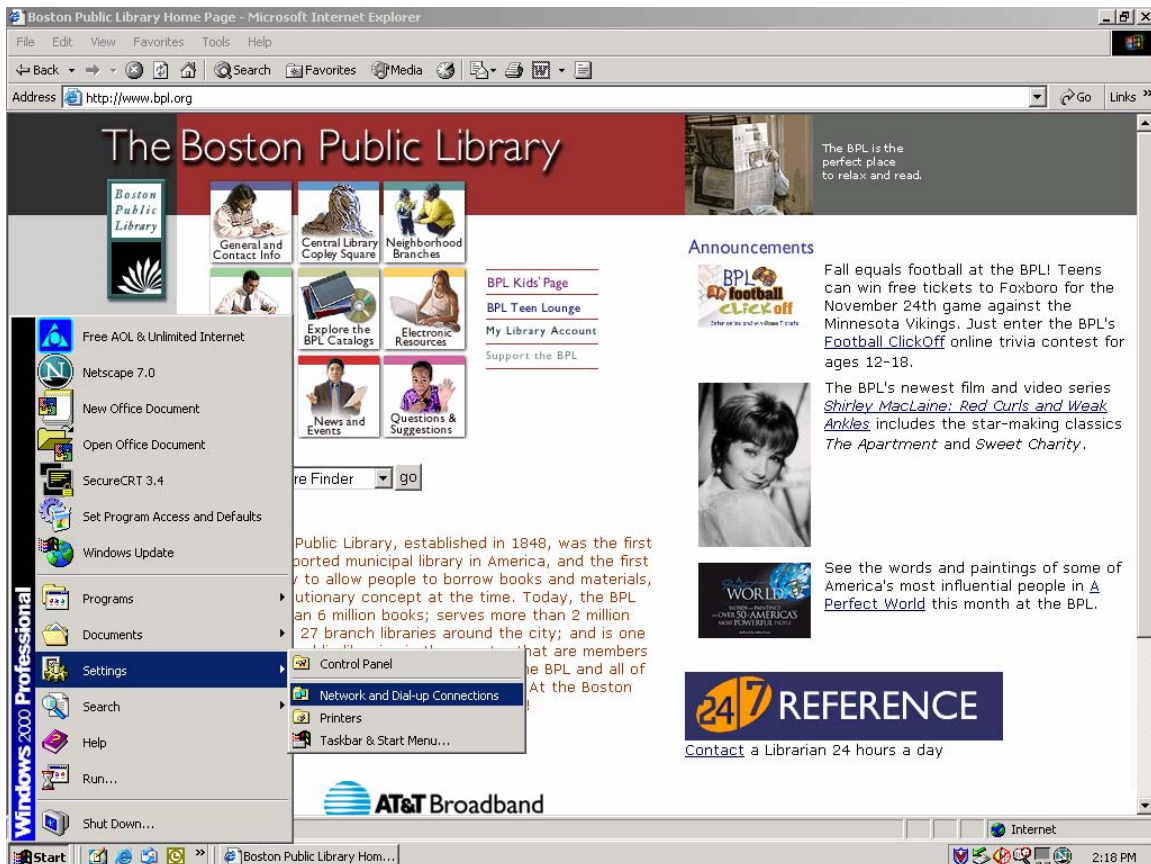


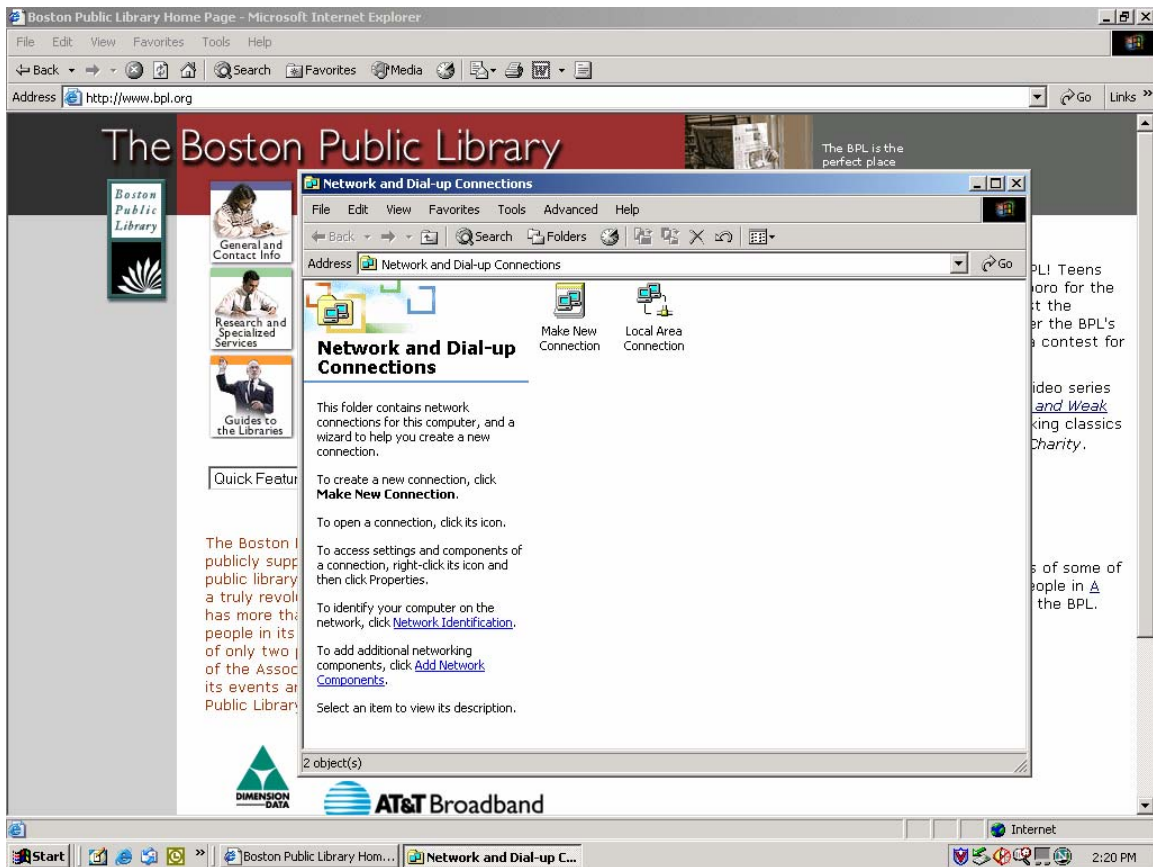
# BOSTON PUBLIC LIBRARY PLUG-IN/WIRELESS INTERNET ACCESS DHCP PROCEDURE WINDOWS 2000

**Wireless access is available at all Boston Public Library locations. Direct plug-in ports are only available in Bates Hall in the Central Library.**

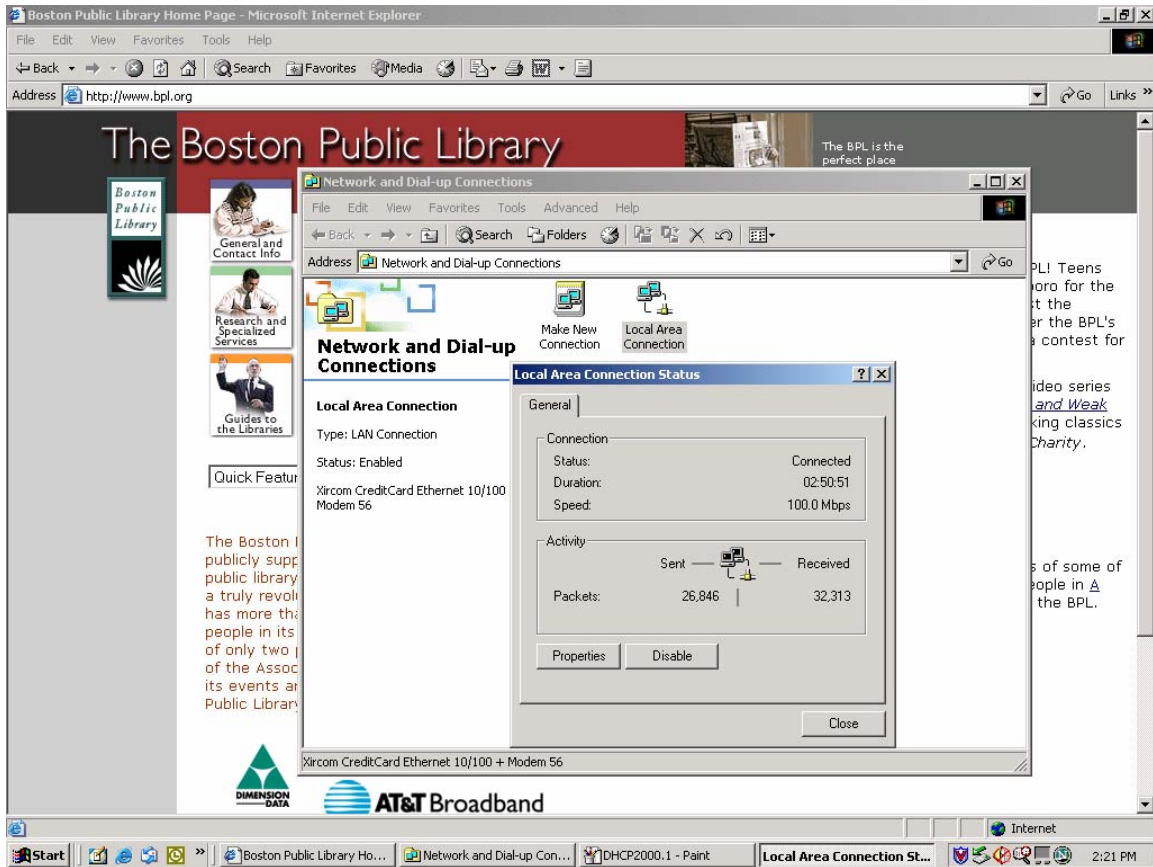
- 1) Select **Start**
- 2) Select **Settings**
- 3) Select **Network and Dial-up Connections**



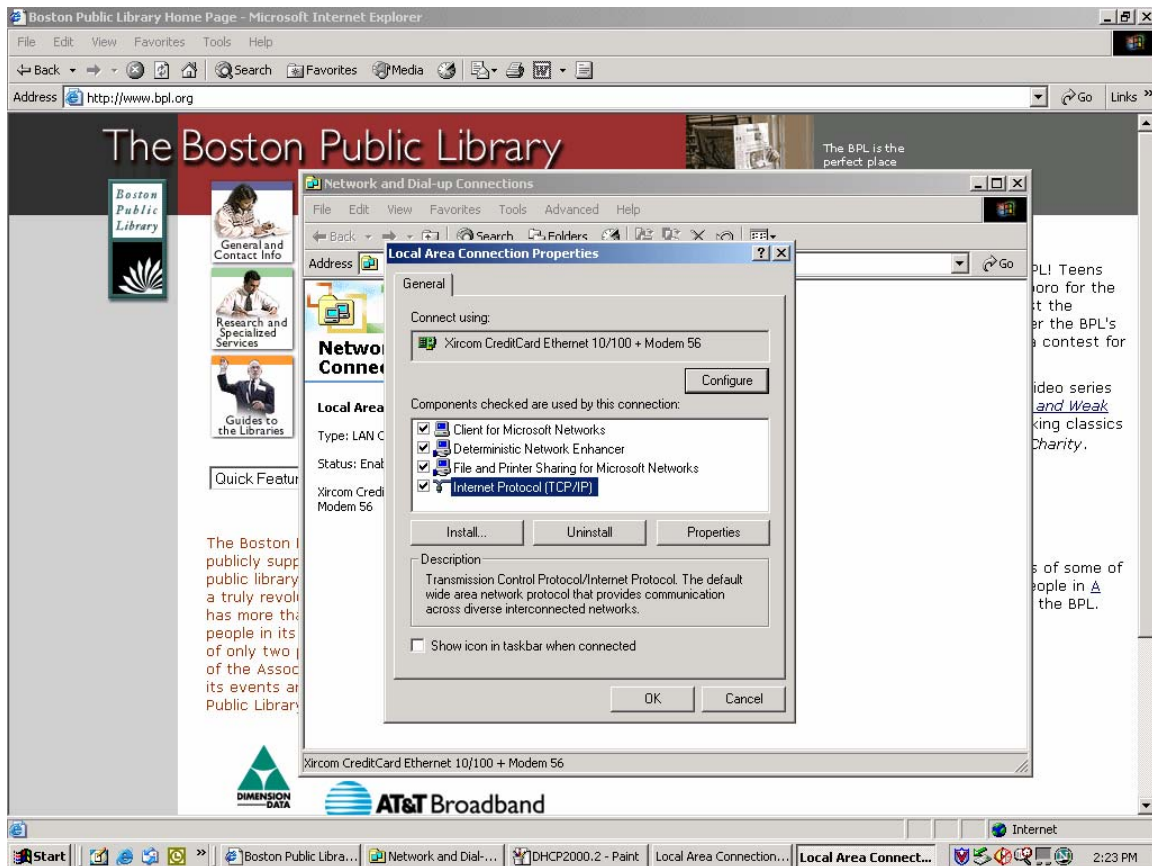
# 1) Network and Dial-up Connections box will appear



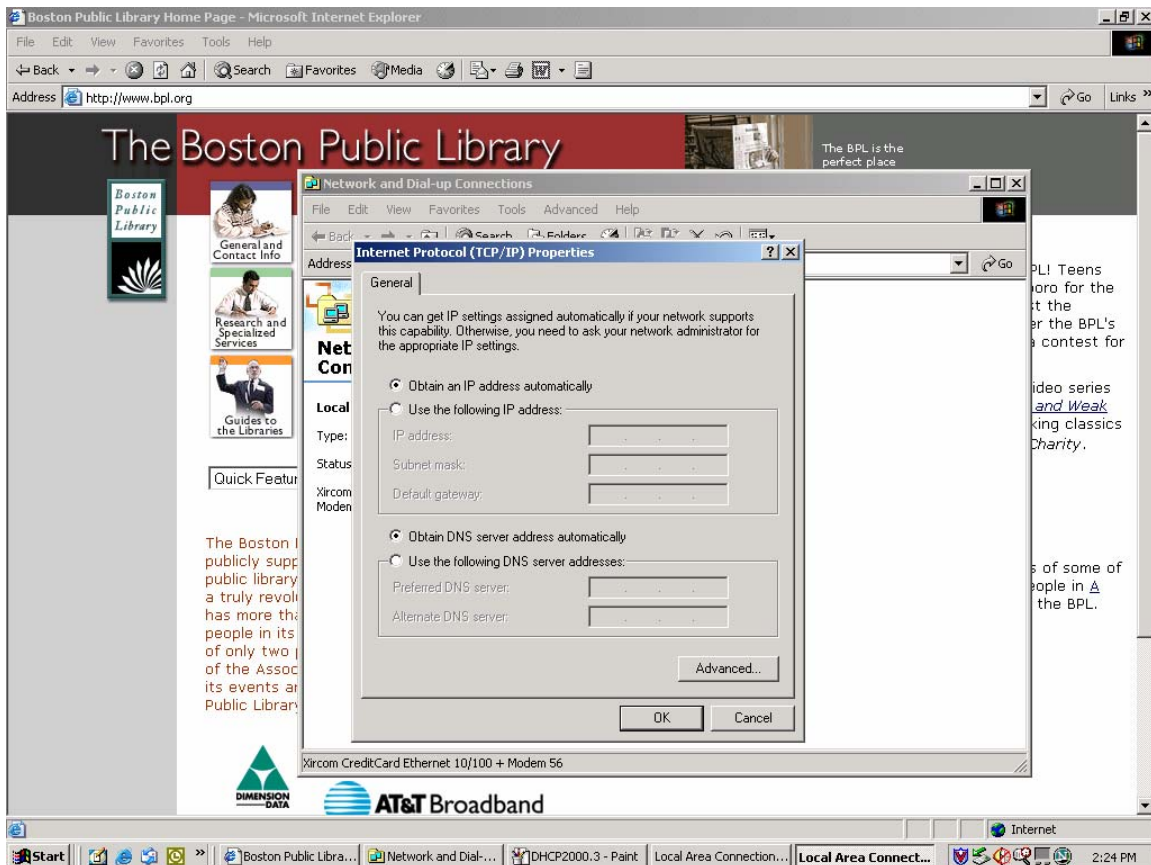
- 1) Select the **Local Area Connections** Icon
- 2) **Local Area Connection Status** box will appear
- 3) Click on **Properties**



- 1) Local Area Connections Properties box will appear
- 2) Highlight **Internet Protocol (TCP/IP)**
- 3) Click on **Properties**



- 1) The Internet Protocol (TCP/IP) Properties box will appear
- 2) Click on **Obtain an IP address automatically**
- 3) Click on **Obtain DNS server address automatically**
- 4) Click **OK**
- 5) Close out all windows by clicking **OK**
- 6) If your laptop computer has previously been on another network, you may need to release your current IP addresses in order to pick up a new IP address from the BPL address – see directions below.
- 7) You can now restart your PC and then access the internet



## **To Release and Renew IP Addresses**

- 1. Go to a command prompt. In order to get a command prompt, click on start and choose run. In the “open:” line, type “command”. A black box will open with a command prompt inside it.**
- 2. At the command prompt, type:  
Ipconfig /release  
You should get a notice that the address has been released.**
- 3. Now you need to get a number from the BPL network. At the command prompt, type:  
Ipconfig /renew**

**After a brief time, you should be notified that you have a new IP number associated with your NIC card. At this point, you should be able to use the BPL network.**

**You must have administrative rights to your computer in order to release or renew your IP address.**

**NOTE:** If you have installed a Personal Firewall System (PFS) you need to be sure that your PFS is not blocking BPL Internet Access. You may need authorize access or to disable the PFS while you are using the connection.