



ADAMS STREET BRANCH LIBRARY  
PROGRAMMING STUDY  
FOR CITY OF BOSTON  
BOSTON PUBLIC LIBRARY AND PUBLIC FACILITY DEPARTMENT  
CAC MEETING, FEB. 28<sup>TH</sup>, 2017  
NADAAA



# AGENDA

- 1.0 SCHEDULE**
- 2.0 SUMMARY OF PROJECT GOAL AND FINDINGS**
- 3.0 FINAL PROGRAMS**
- 4.0 ADJACENCY DIAGRAM**
- 5.0 NEW BUILDING OPTIONS**

# ADAMS BRANCH LIBRARY: STUDY SCHEDULE

- Meeting
- Submission
- Presentation
- \$ Cost-Check

JUN | JUL | AUG | SEPT | OCT | NOV | DEC | JAN | FEB

PROJECT KICK-OFF



WORKING GROUP MEETINGS



CAC MEETINGS



PUBLIC PRESENTATION



EXISTING CONDITIONS ANALYSIS



COMMUNITY SURVEY



PROGRAM TEST FITS



DEVELOPMENT OF OPTIONS



COSTING



SUBMISSIONS







# BPL COMPASS: STRATEGIC PLAN

- User centered institution
- Community gathering
- Special Collections
- Center of Knowledge
- Children & Teens
- Access & Innovation
- Sustainable Organization
- Fun



PROGRAMMING STUDY  
ADAMS STREET BRANCH  
DRAFT EXISTING CONDITIONS REPORT

NADAAA  
FOR CITY OF BOSTON  
BOSTON PUBLIC LIBRARY AND PUBLIC  
FACILITIES DEPARTMENT



# EXECUTIVE SUMMARY

**Site:** residential neighborhood, near school, off-site parking

**Adams Branch by the Numbers:** East Boston and Mattapan BPL as benchmarks

**Roof:** type, access, mechanical systems

**Landscape:** trees and reading garden

**Interior:** program, light, staff areas and visibility

**Computer & IT:** small computer program, lack of technology space/storage

**Collection:** 33,000 volumes

**Accessibility:** entry, accessible routes and clearances

**MEP/FP review:** needs updated and integrated systems

# SURVEY: TOP RESPONSES

1. Age range of survey participants **35-65 years of age**
2. Visit **1x per month**
3. Use Adams Street Branch Library almost **exclusively**
4. Arrive **on foot**
5. Enjoy **location, staff, and children's programming**
6. Most popular parts of library: **Children and Teen areas**
7. Agree that current building is **too small and old**
8. Want **larger community facilities** and programming (gallery, multi-purpose space, etc.)
9. Want **more technology** programming
10. **Quiet places** to Study/Meet

# ADAMS STREET: SELECT PROJECT GOALS

1. Improved service via a single floor building
2. Sensitivity to budget, schedule & community logistics
3. Visibility/ Secure sight lines within library
4. Capturing outdoor space / outdoor program
5. Transparency and Inclusivity (ability to see activities of the library from the exterior)
6. Adjacencies that support BPL programs and goals
7. Appropriate acoustics
8. Amenity spaces: kitchen near community hall, family space, etc.
9. Compatibility with urban context
10. Accommodate new BPL program elements
11. Sustainability through daylighting
12. Upgrade technology and adaptability of systems for future technology

# UPDATED PROGRAM



ADAMS STREET BRANCH LIBRARY

# PROGRAM SUMMARY

TOTAL NET : **12,251 SF**

**TOTAL GROSS : 14,701 SF**

## ENTRANCE ZONE

VESTIBULE  
LOBBY  
BORROWER SERVICE DESK  
SELF PICK-UP HOLDS  
FRIENDS BOOK SALE SHELF  
BOOK DROP OFF  
STROLLER PARKING

**1,016 SF**

## ADULT SECTION

ADULT COLLECTION  
ADULT SEATING AREA  
ADULT COMPUTER  
PUBLIC SERVICE DESK  
IMMIGRATION INFORMATION

**2,521 SF**

## TEEN SECTION

TEEN COLLECTION  
TEEN SEATING AREA  
TEEN COMPUTERS

**782 SF**

## CHILDREN'S SECTION

CHILDREN'S COLLECTION  
CHILDREN'S AREA  
CHILDREN'S COMPUTER  
PUBLIC SERVICE DESK  
CHILDREN'S BATHROOM

**2,262 SF**

## SHARED SERVICE

COMMUNITY HALL  
MEETING ROOMS  
LAPTOP AREA  
COPY/PRINT SERVICE  
CASUAL SEATING  
PUBLIC RESTROOMS  
KITCHENETTE  
FURNITURE STORAGE

**2,984 SF**

## ADMINISTRATION

LIBRARIAN'S OFFICE  
STAFF BREAK ROOM  
STAFF RESTROOM  
STAFF WORKROOM

**693 SF**

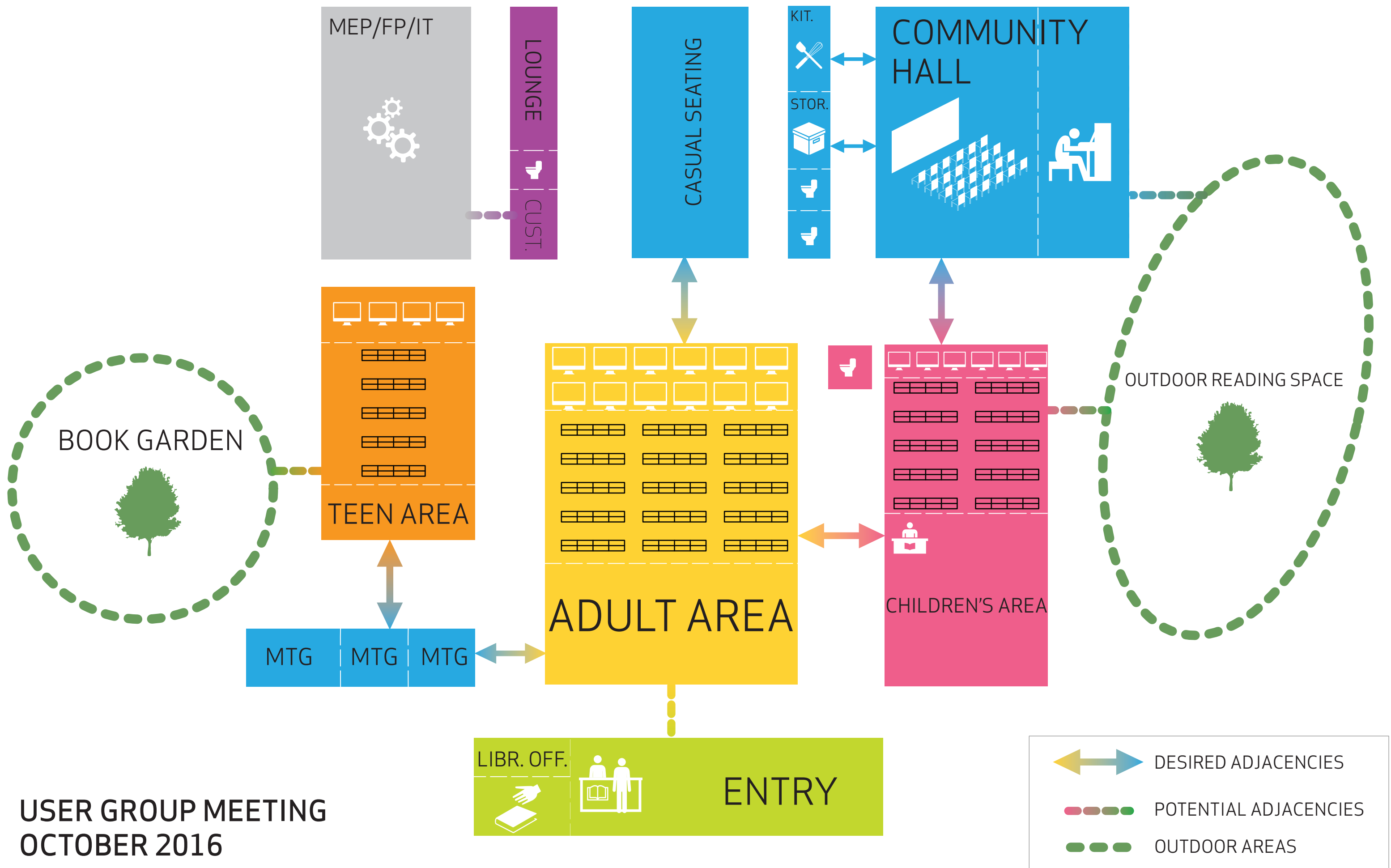
## BUILDING SERVICES

MECHANICAL ROOM  
ELECTRICAL ROOMS  
IT/AV ROOM  
GENERAL STORAGE  
FACILITY STORAGE  
CUSTODIAL OFFICE  
CUSTODIAL CLOSET

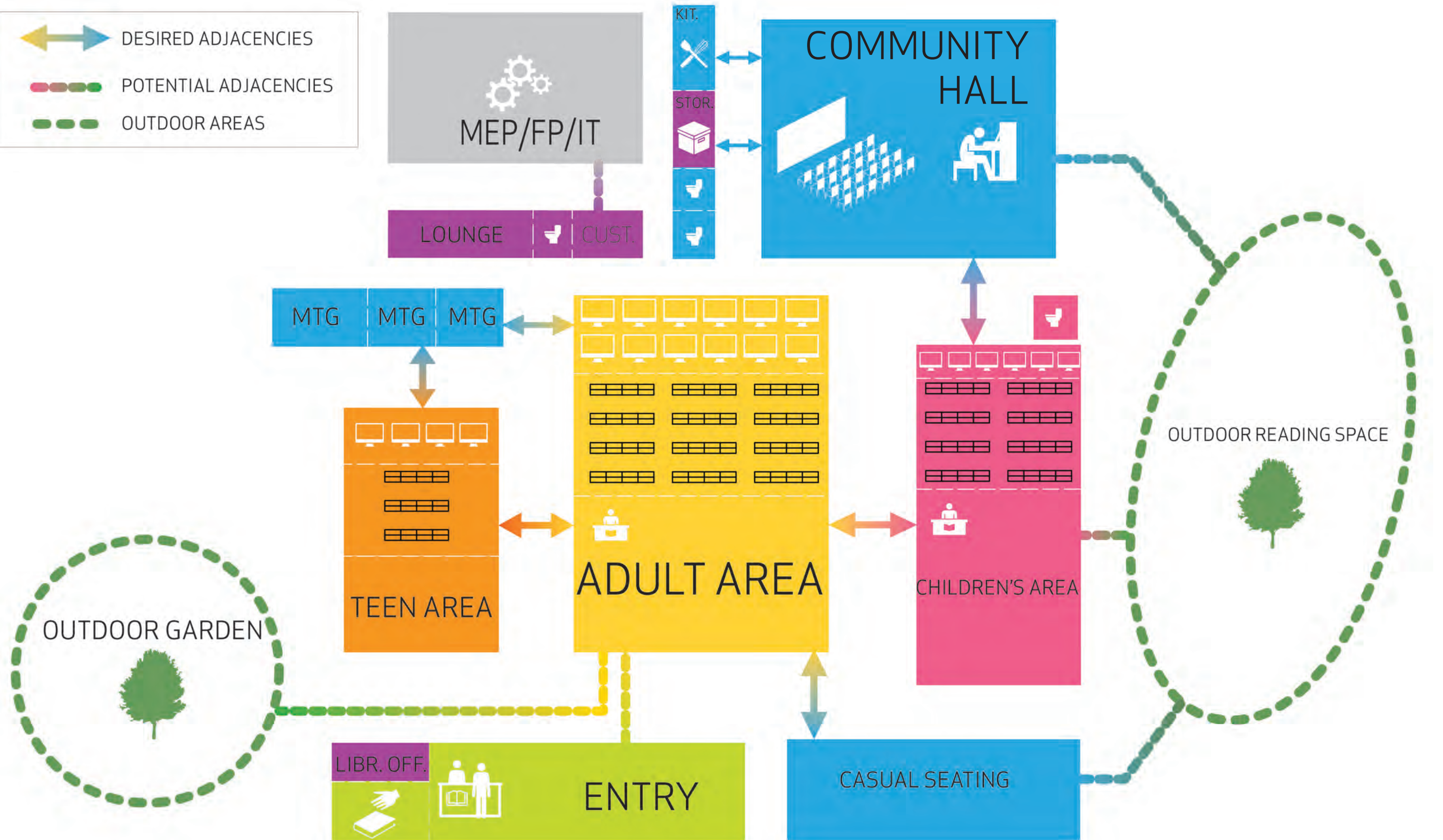
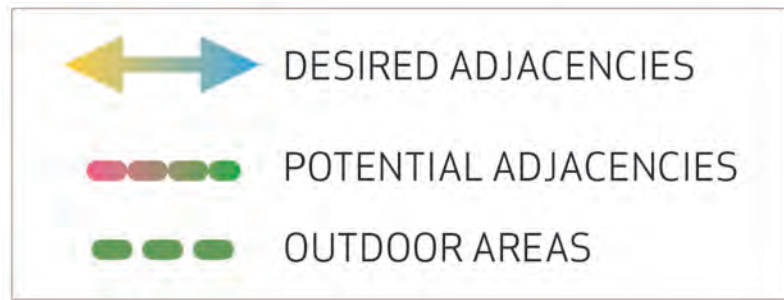
**1,820 SF**

NADAAA,DECEMBER 7, 2016

# ADJACENCY DIAGRAM



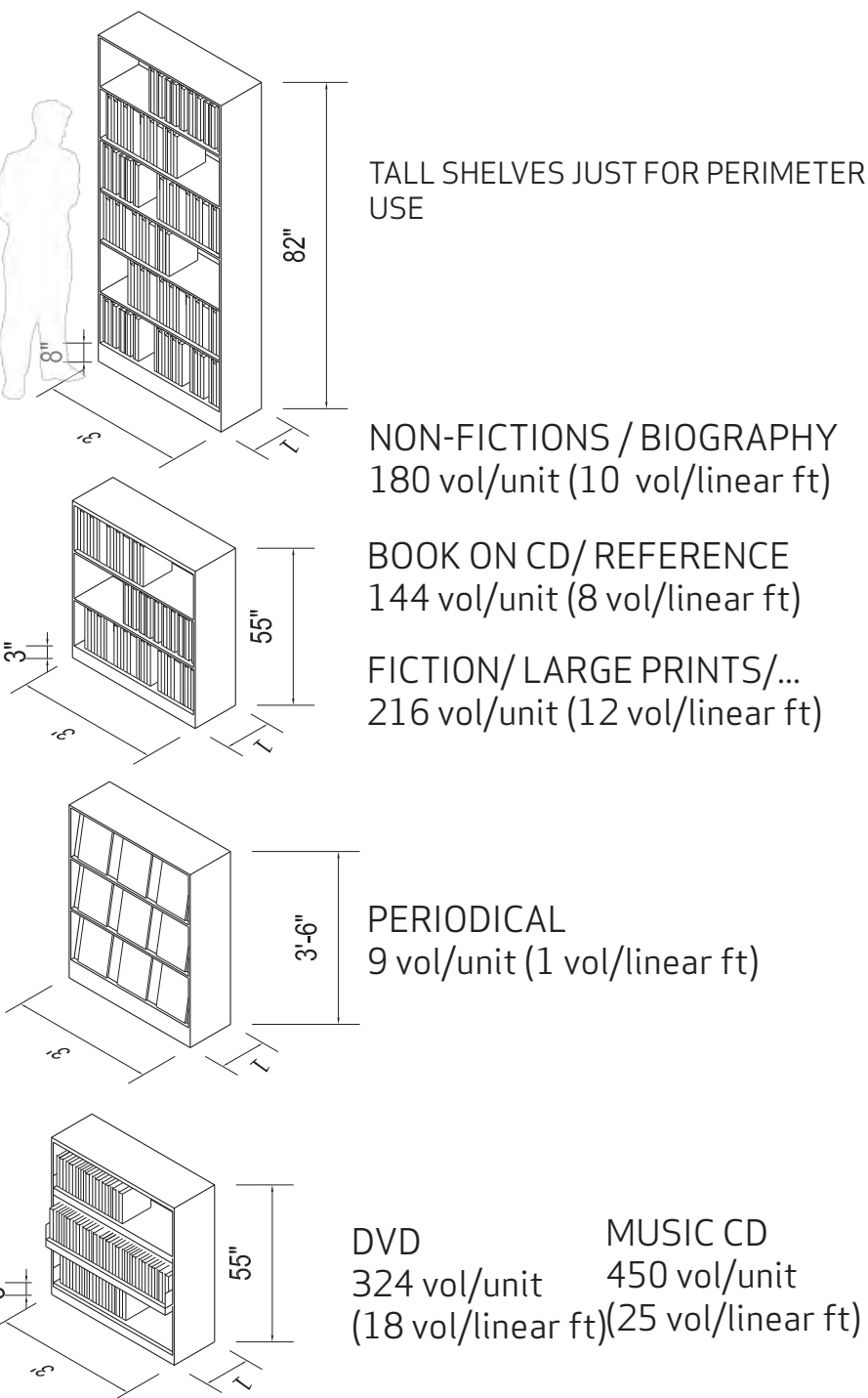
USER GROUP MEETING  
 OCTOBER 2016





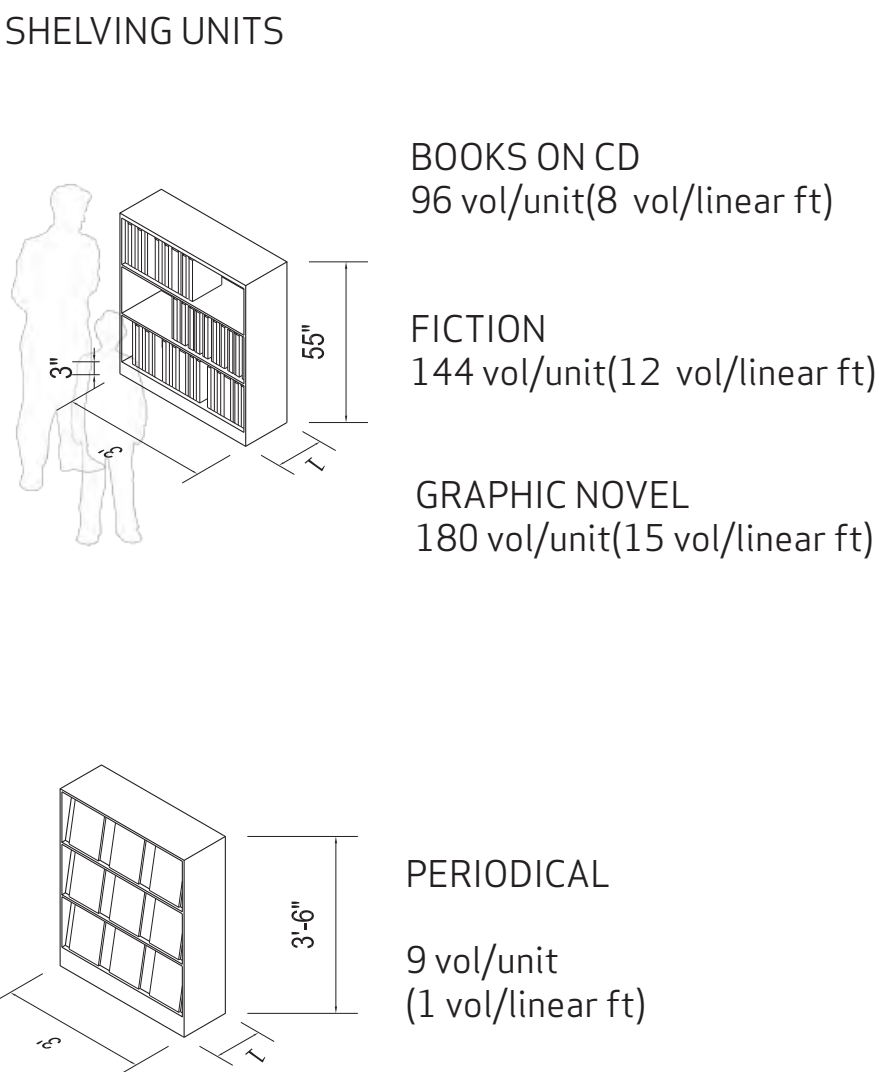
# ADULT COLLECTION

Total Collection  
SHELVING UNITS                      12,328  
64



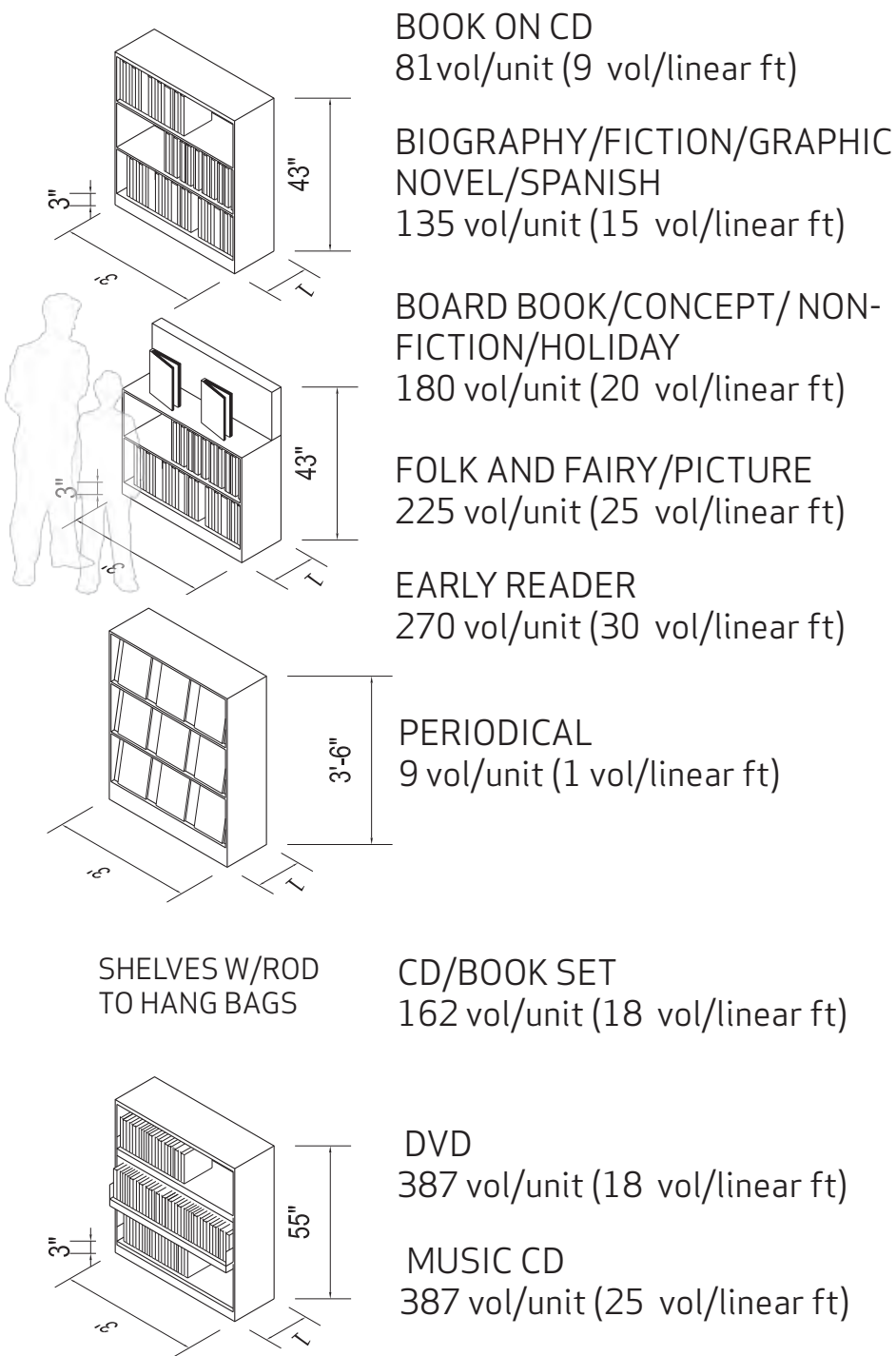
# TEEN COLLECTION

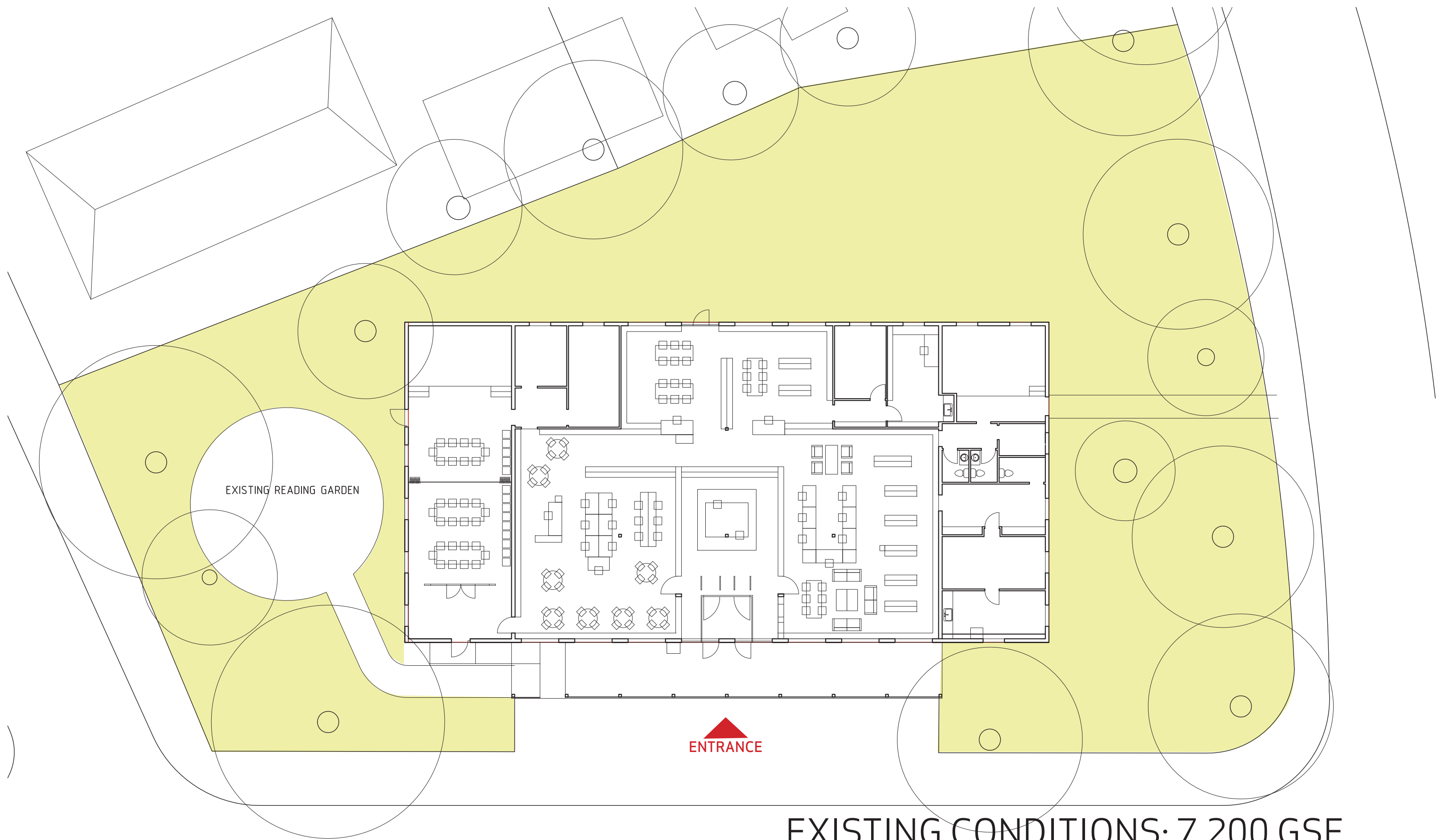
Total Collection  
SHELVING UNITS                      2,680  
15



# CHILDREN'S COLLECTION

Total Collection  
SHELVING UNITS                      11,792  
66

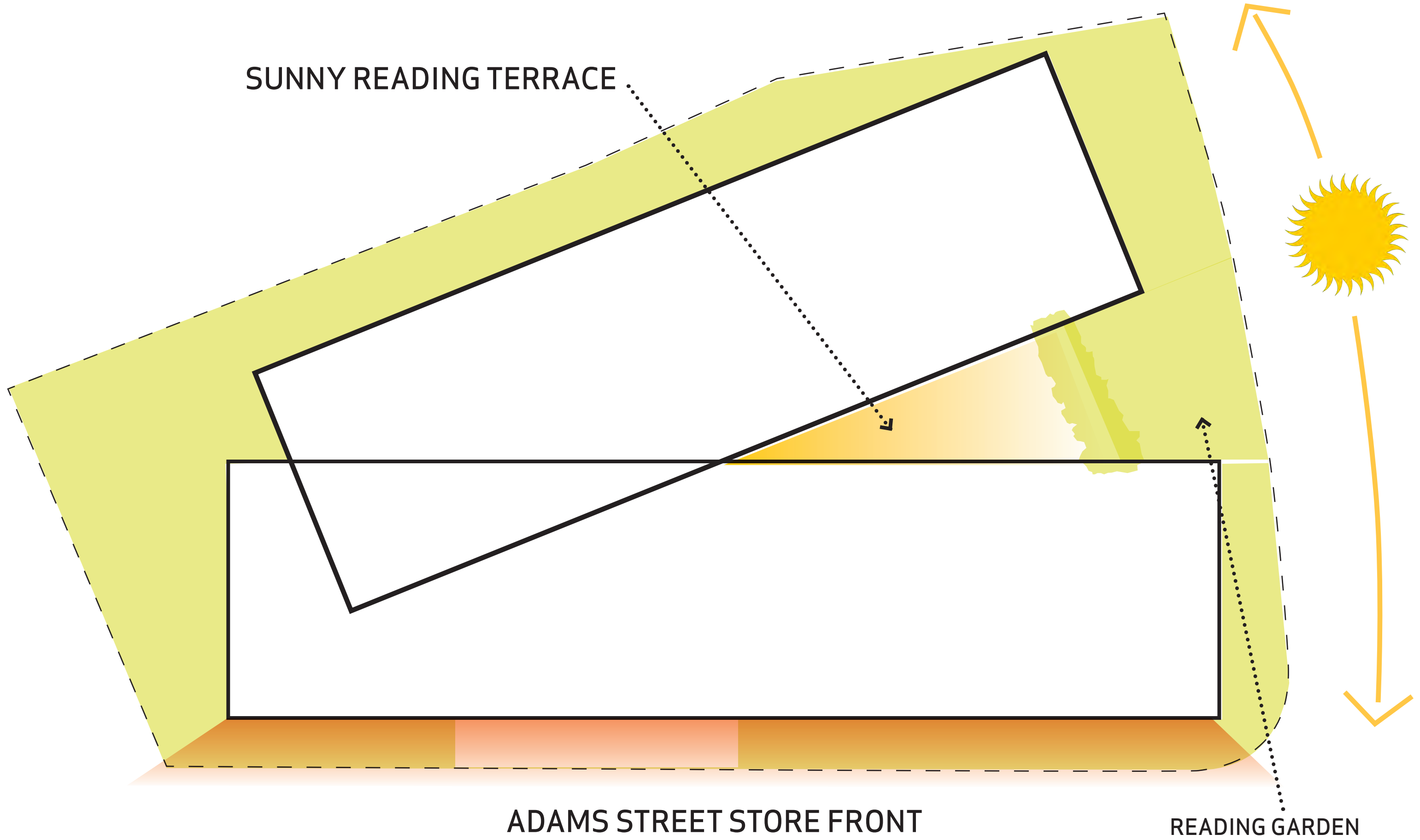




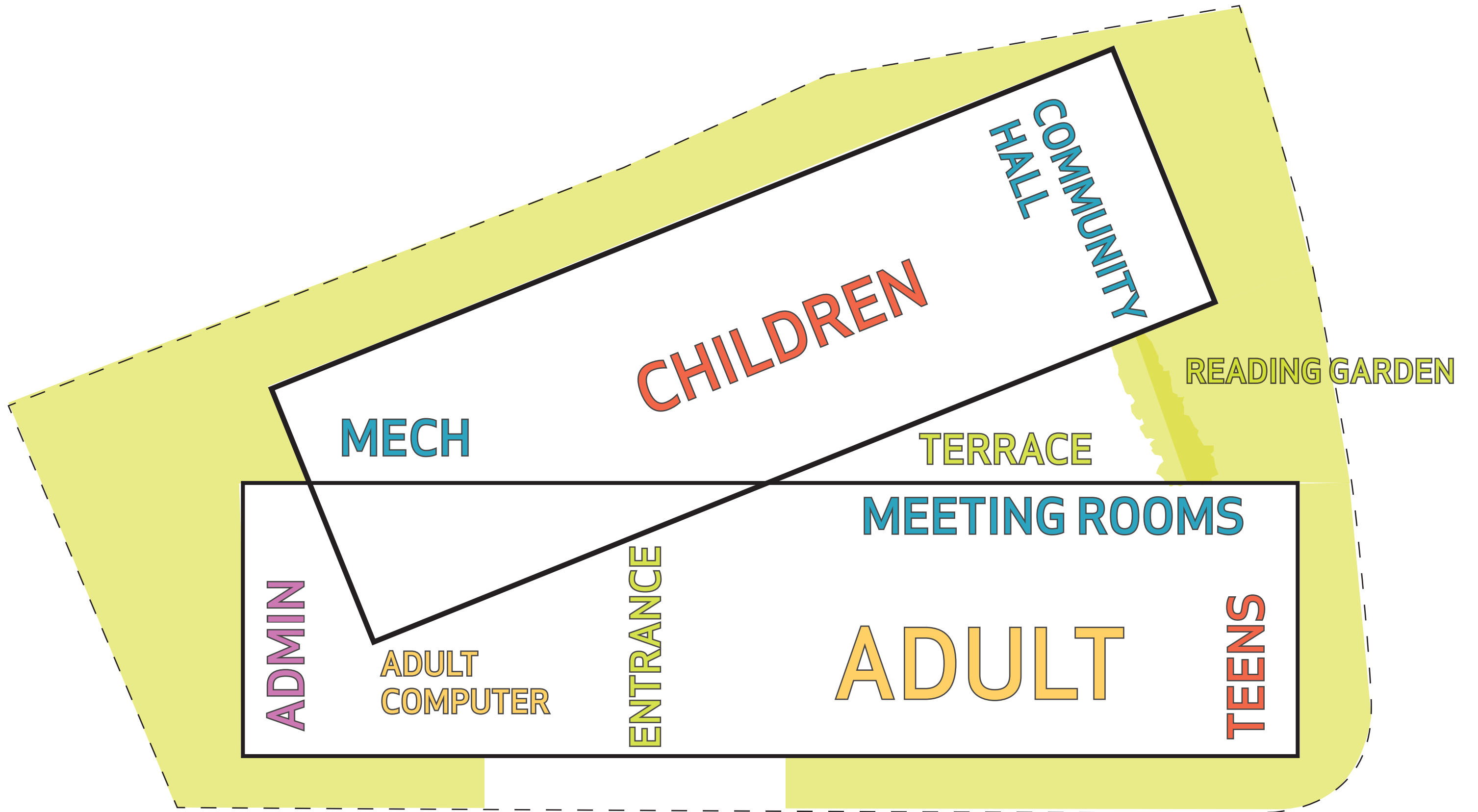
EXISTING CONDITIONS: 7,200 GSF  
(BASE PROGRAM: 14,701 SF)

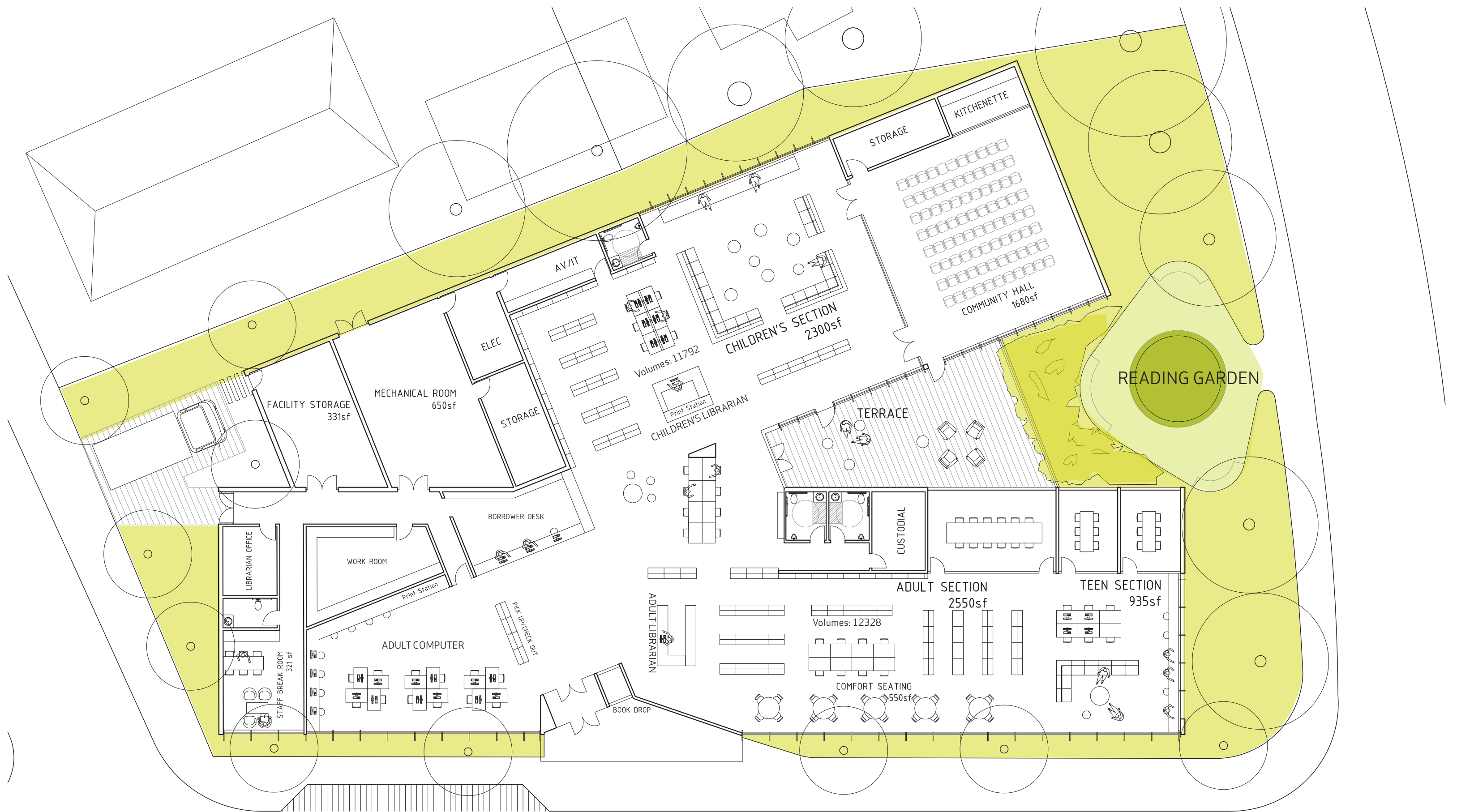


# OPTION A: NEW BUILDING WITH SOUTH COURT



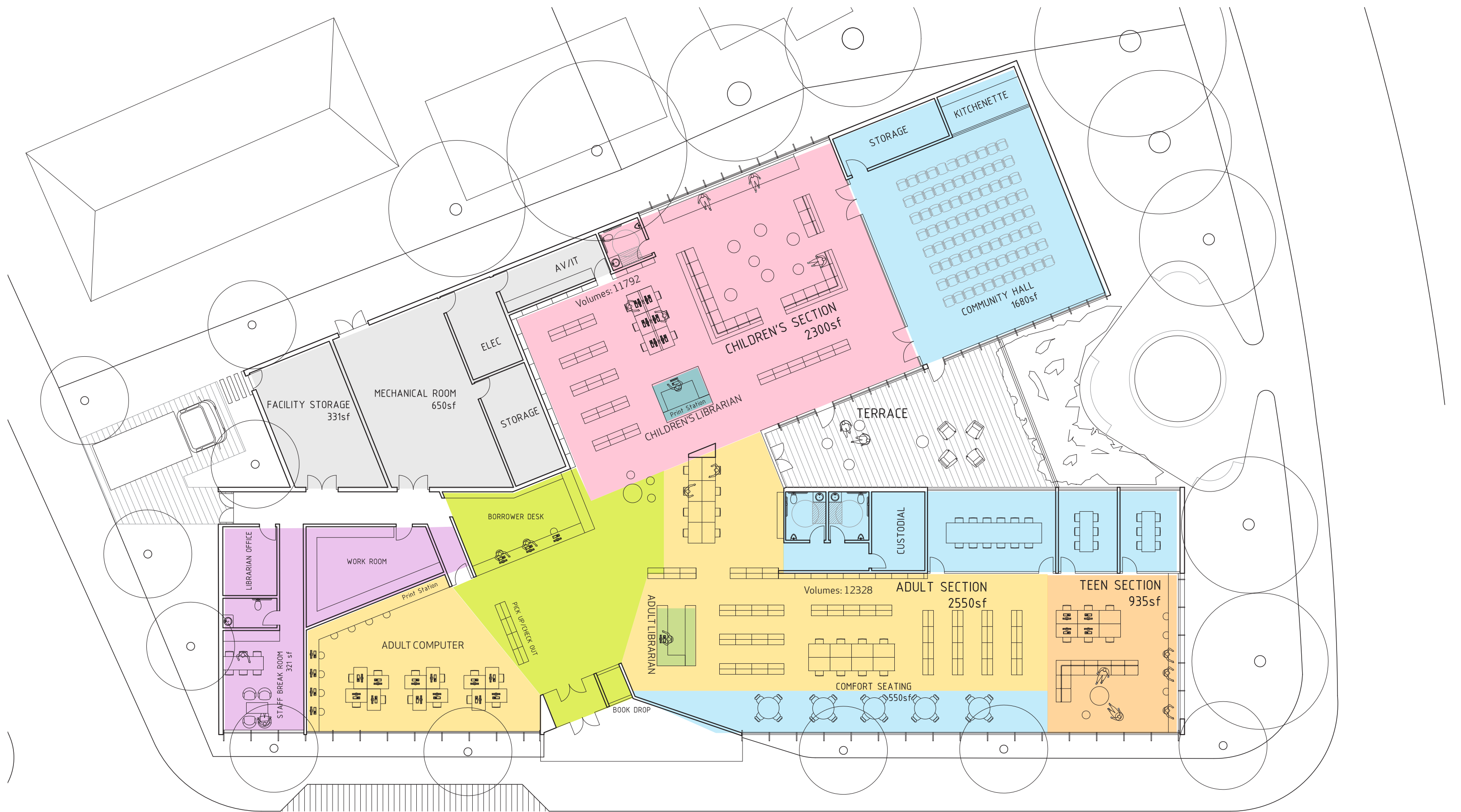






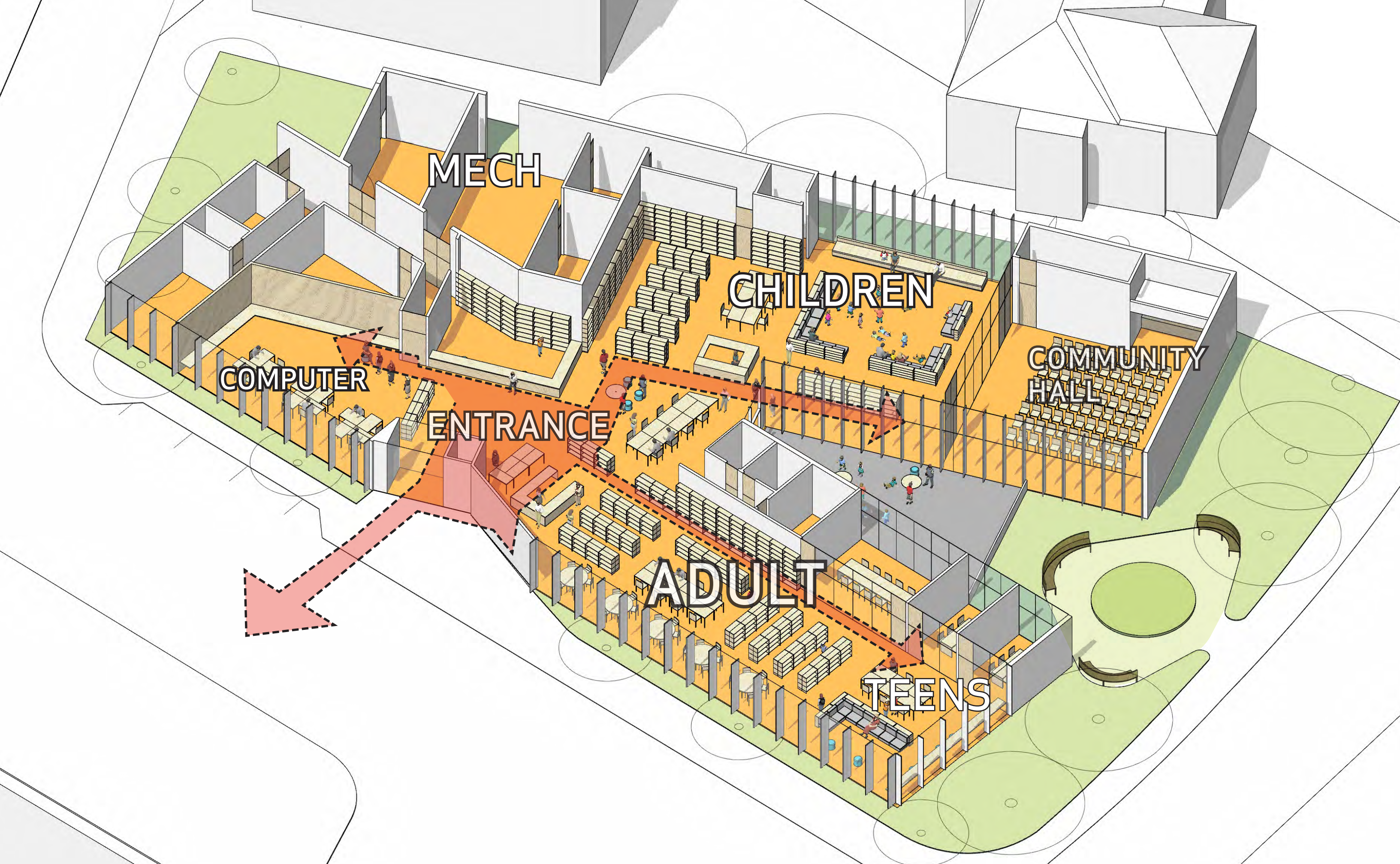
ENTRANCE

TOTAL BUILD AREA : 14,470 GSF  
(BASE PROGRAM : 14,701 SF)

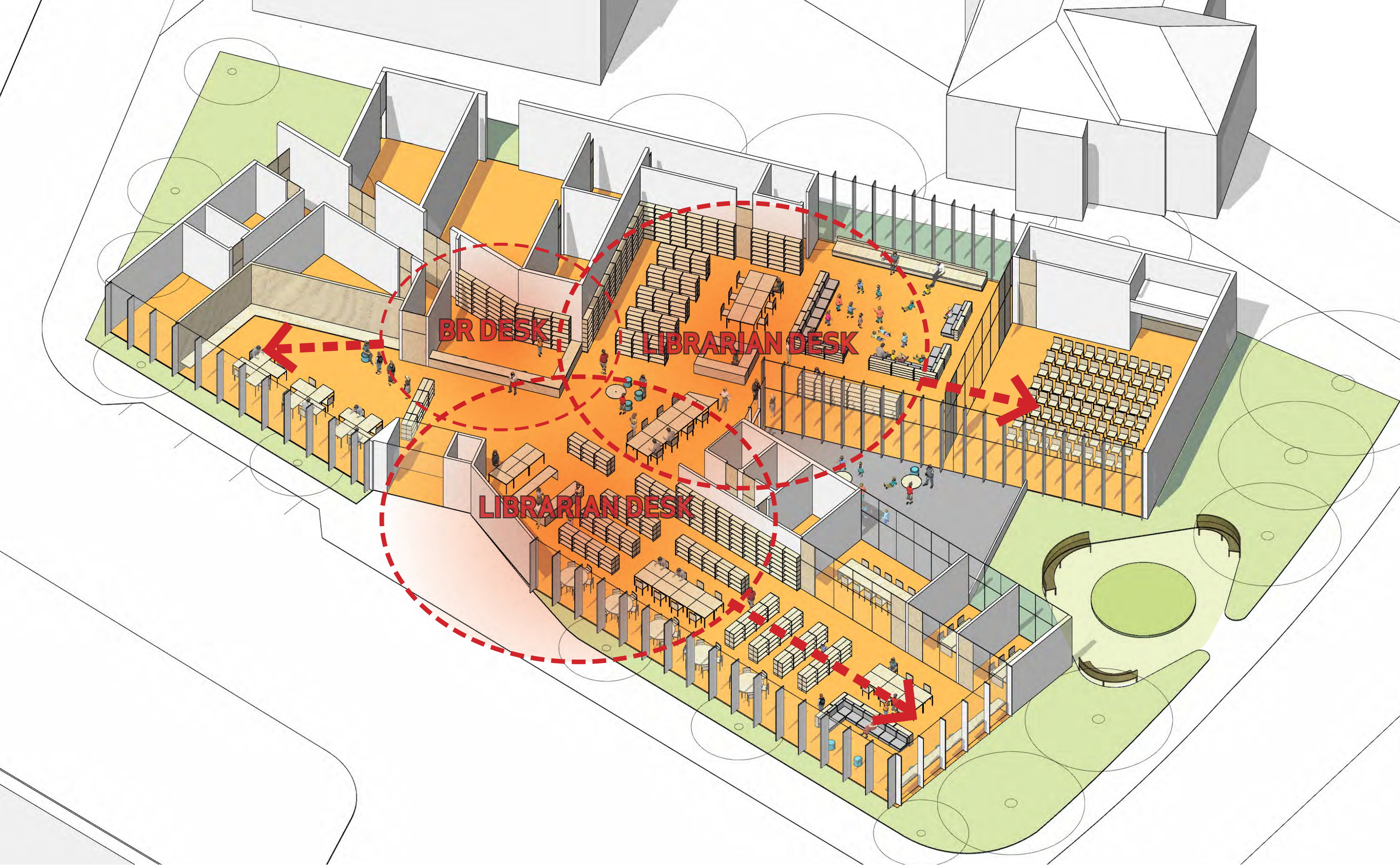


ENTRANCE ZONE 1,016 SF 1,100 SF	ADULT SECTION 2,521 SF 2,550 SF	TEEN SECTION 782 SF 935 SF	CHILDREN'S SECTION 2,262 SF 2,300 SF	SHARED SERVICE 2,984 SF 3,118 SF	ADMINISTRATION 693 SF 957 SF	BUILDING SERVICES 1,820 SF 1,640 SF
---------------------------------------	---------------------------------------	----------------------------------	--	--	------------------------------------	---

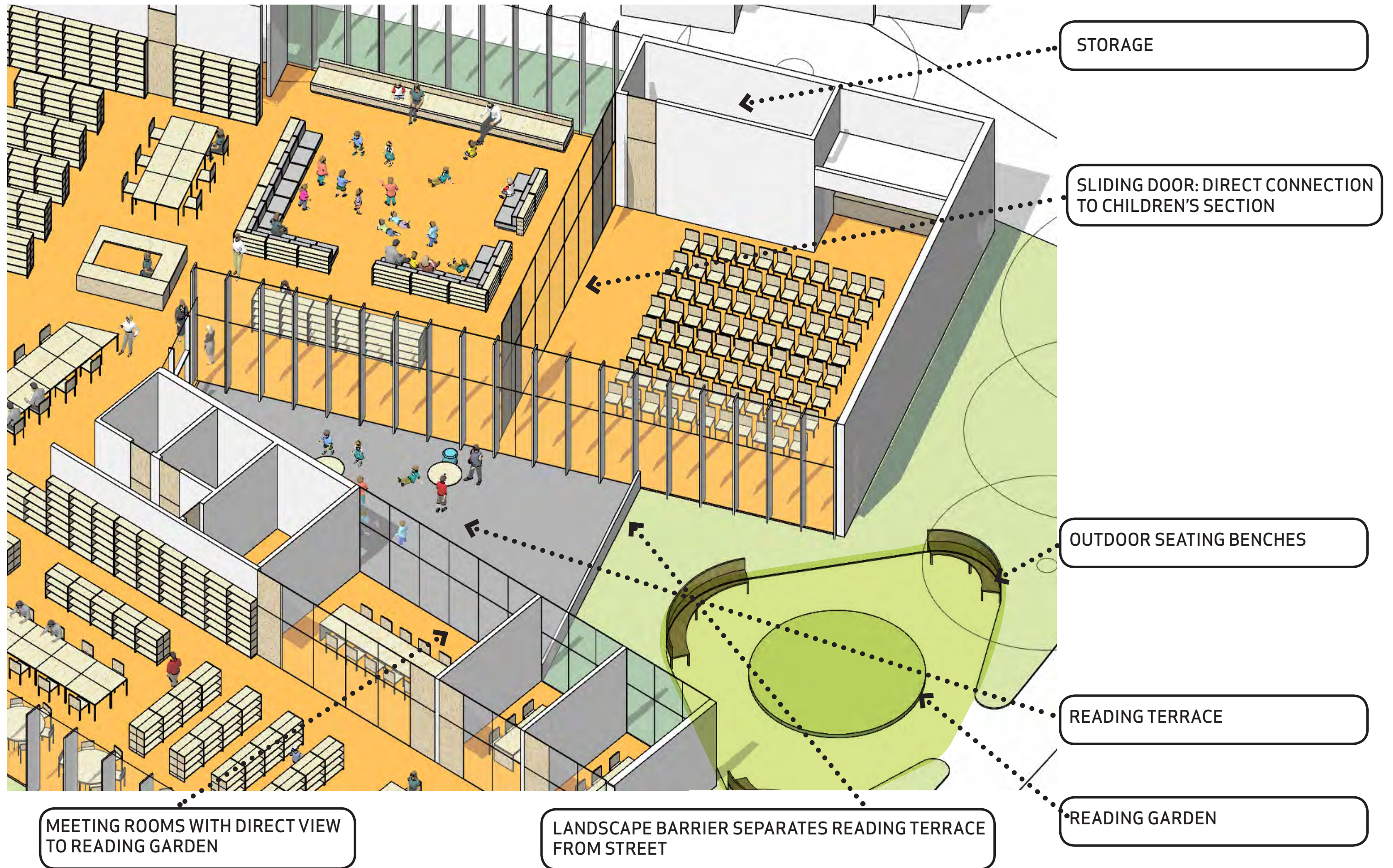
















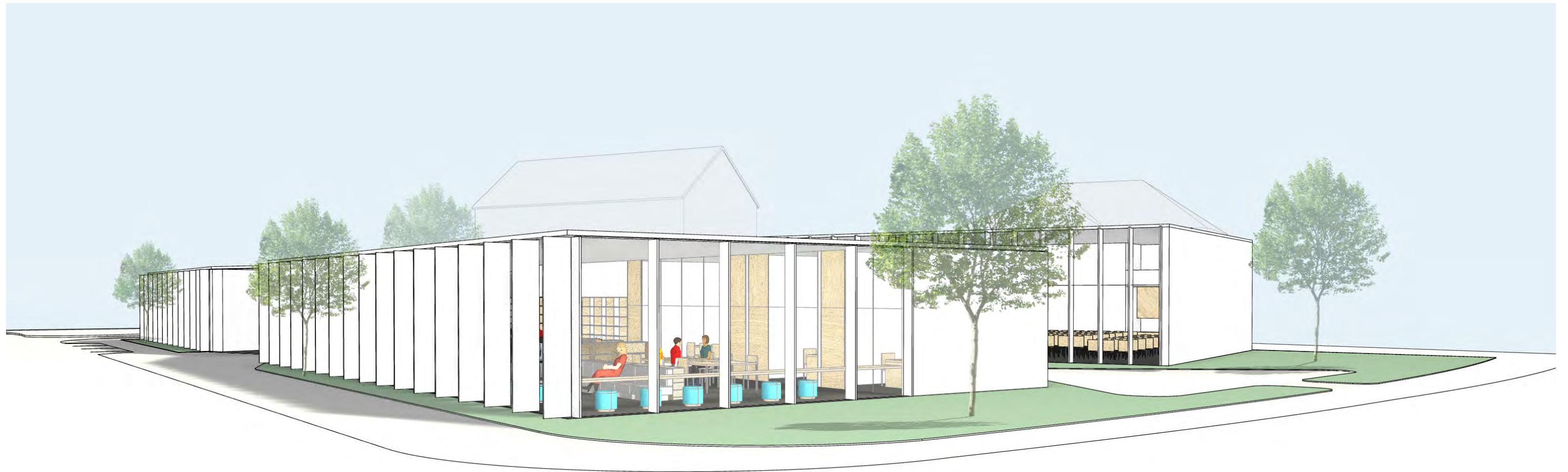
## CHILDREN'S SECTION





## READING GARDEN (TERRACE)





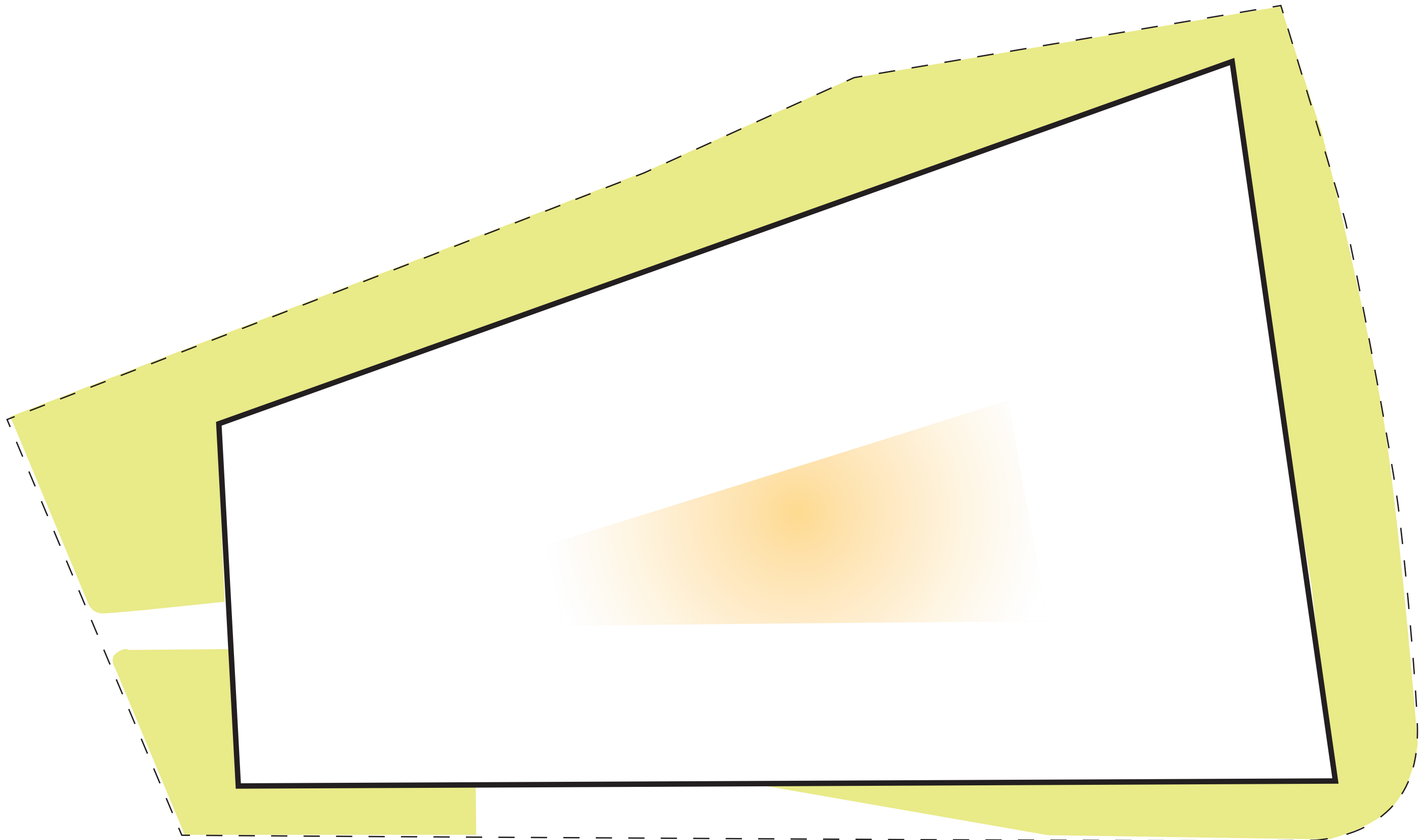
VIEW FROM ADAMS /DELMONT CORNER



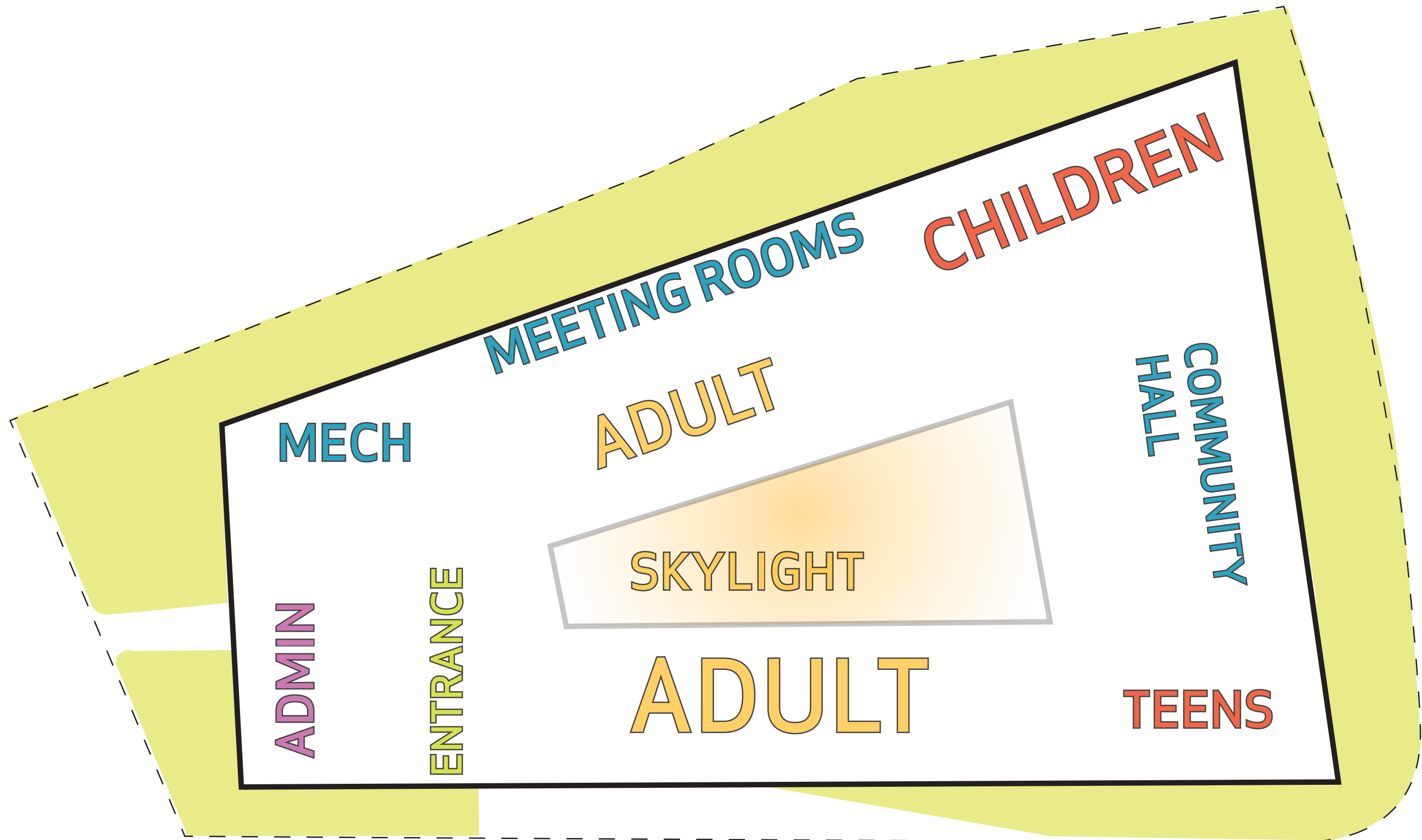
VIEW FROM ADAMS STREET

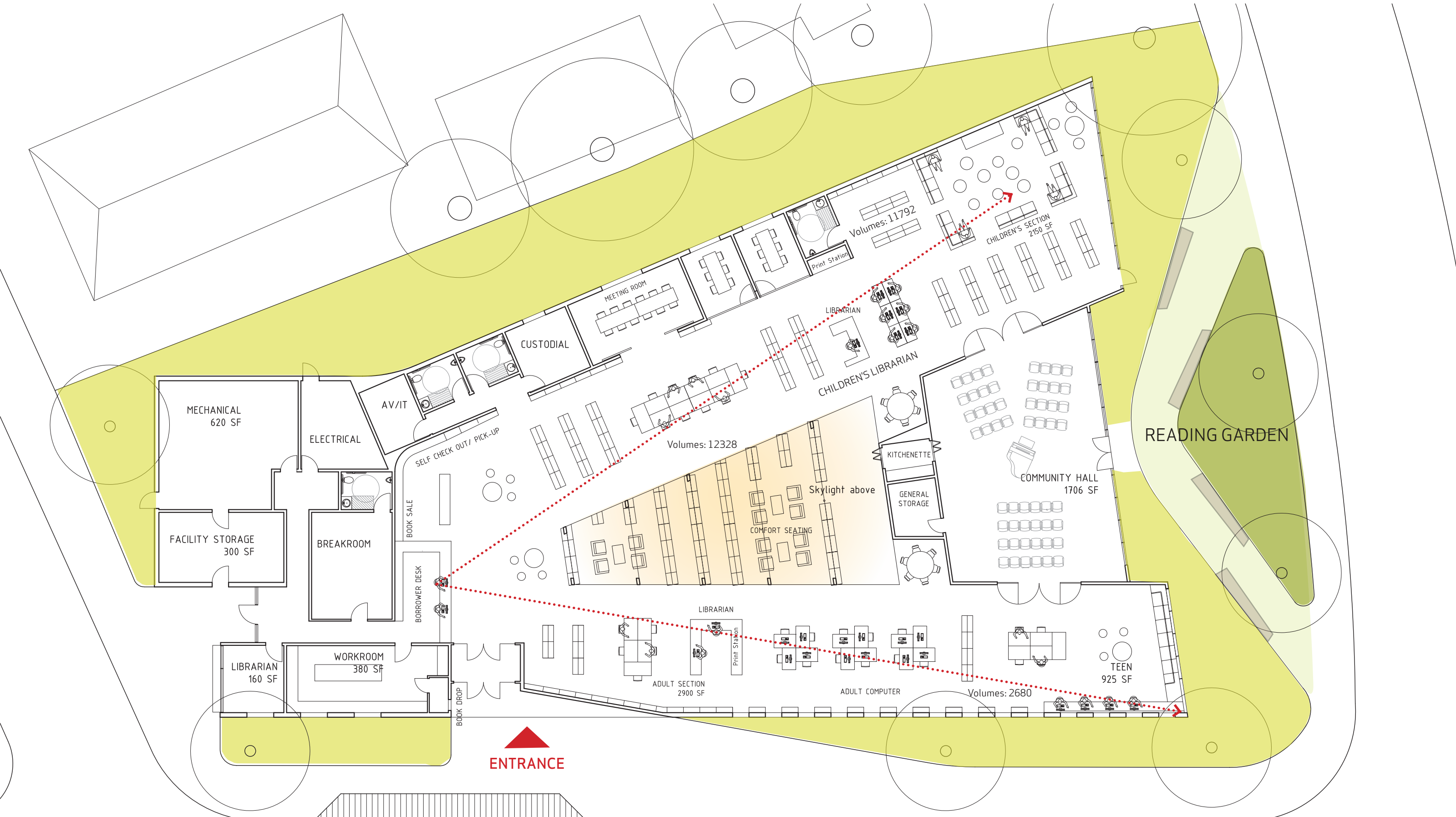
# OPTION B: NEW BUILDING WITH CENTRAL SKYLIGHT





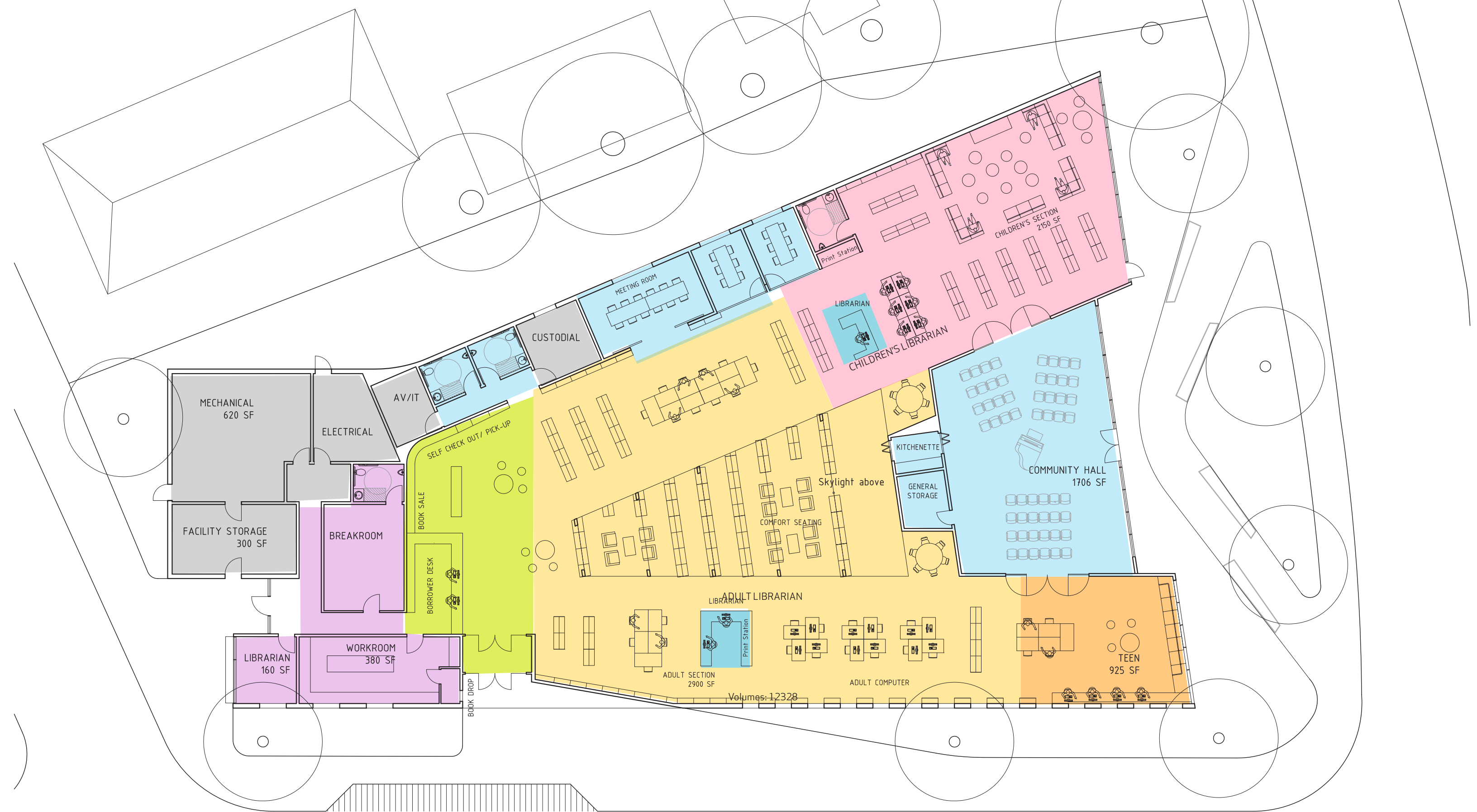
SKYLIGHT





TOTAL BUILDING AREA : 14,400 GSF  
(BASE PROGRAM AREA : 14,701 SF)



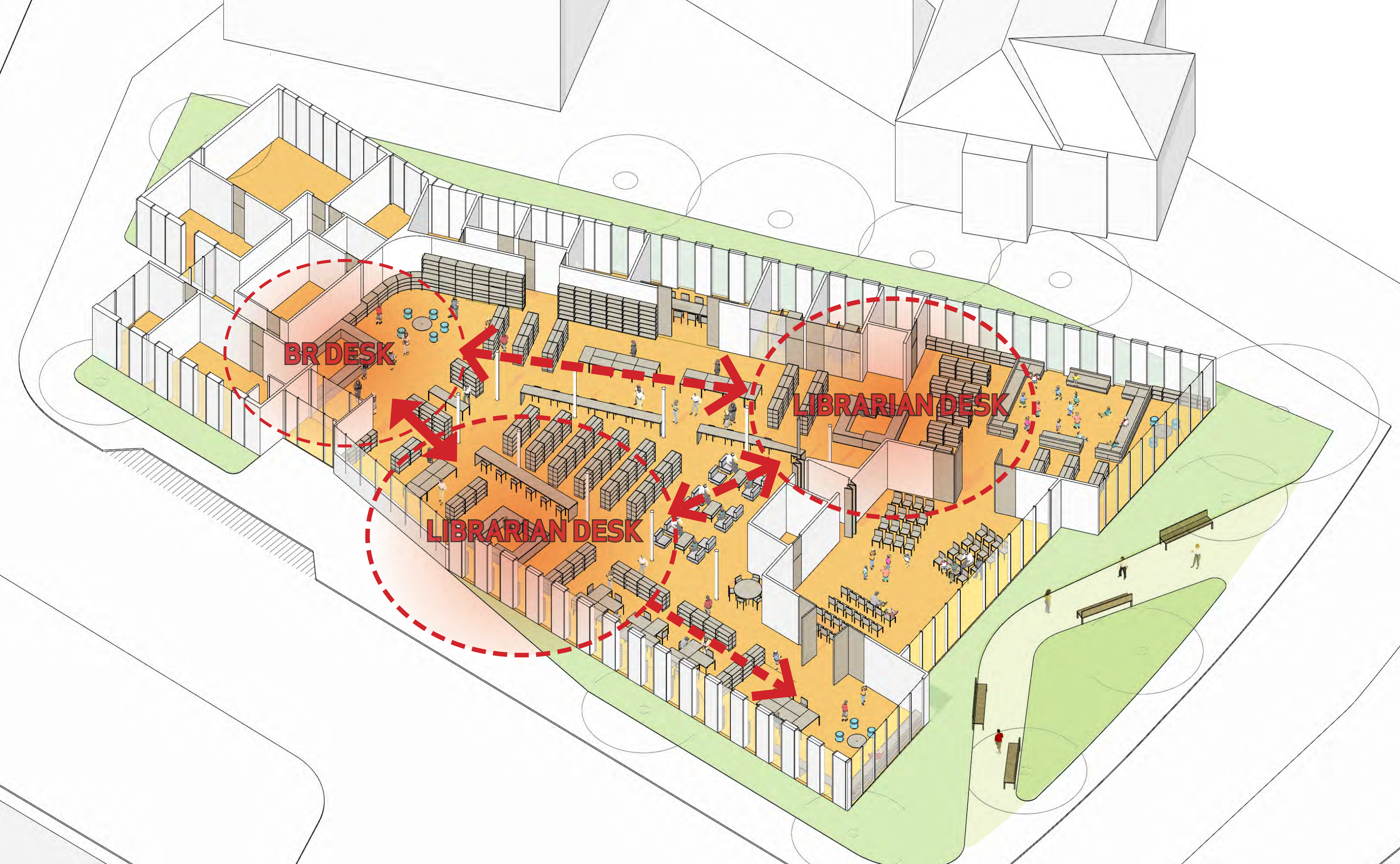


ENTRANCE ZONE 1,016 SF 1,027 SF	ADULT SECTION 2,521 SF 2,900 SF	TEEN SECTION 782 SF 925 SF	CHILDREN'S SECTION 2,262 SF 2,150 SF	SHARED SERVICE 2,984 SF 3,320 SF	ADMINISTRATION 693 SF 957 SF	BUILDING SERVICES 1,820 SF 1,500 SF
---------------------------------------	---------------------------------------	----------------------------------	--	--	------------------------------------	---











KITCHENETTE: SERVES BOTH SEATING AREA AND COMMUNITY HALL

DIRECT CONNECTION TO CHILDREN'S SECTION

ADULT SEATING AREA UNDER SKYLIGHT

OUTDOOR SEATING BENCH IN READING GARDEN

SOUTHERN LIGHT FOR DAY ACTIVITIES

DIRECT CONNECTION TO TEEN SECTION

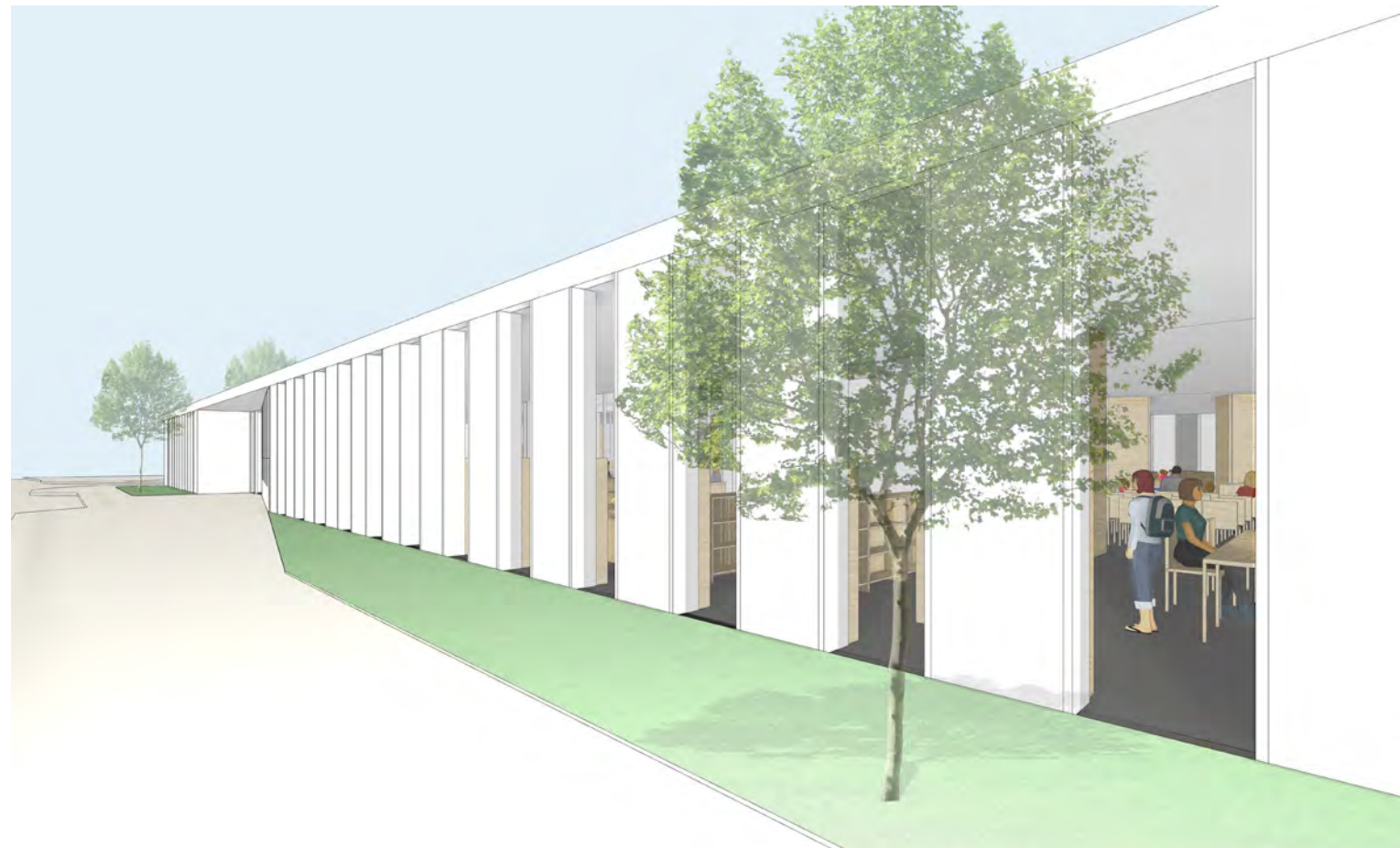
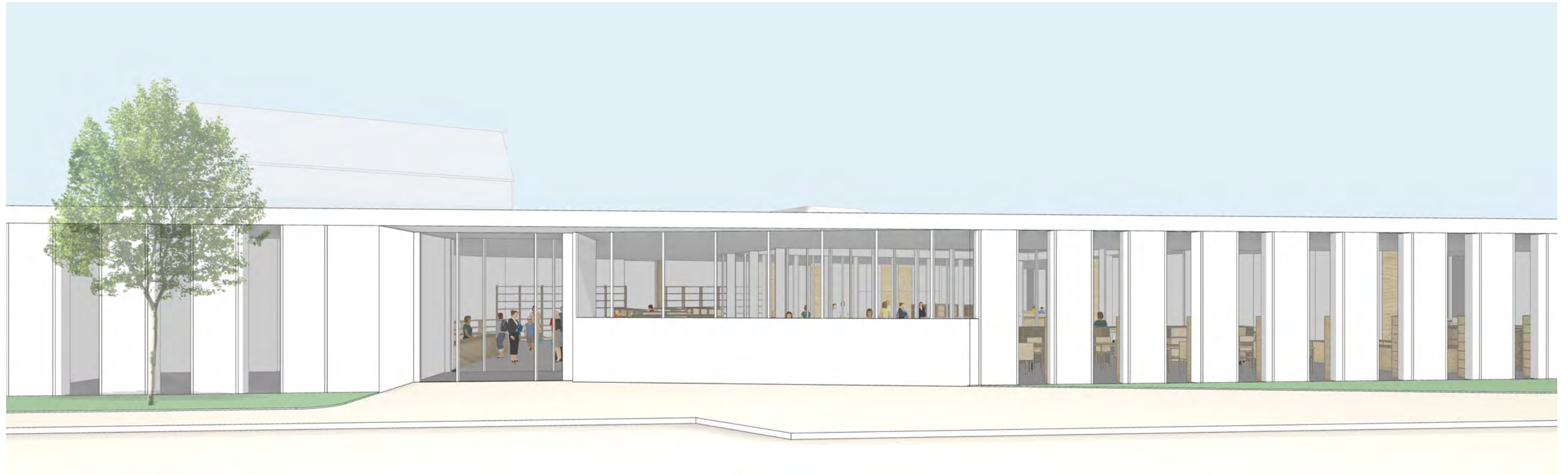
FURNITURE STORAGE





## SKYLIGHT IN ADULT SECTION





## ADAMS STREET VIEW





## DELMONT STREET VIEW



# ADAMS STREET: SELECT PROJECT GOALS

1. Visibility/ Secure sight lines within library
2. Capturing outdoor space / outdoor program
3. Transparency and inclusivity (ability to see activities of the library from the exterior)
4. Adjacencies that support BPL programs and goals
5. Compatibility with Adams Street neighborhood context
6. Sustainability target LEED silver



