

Dudley Branch Library Renovations



Martin J. Walsh, Mayor
Project #7084
City of Boston Public Facilities Department

Boston Public Library

Utile, Inc. Architecture and Planning

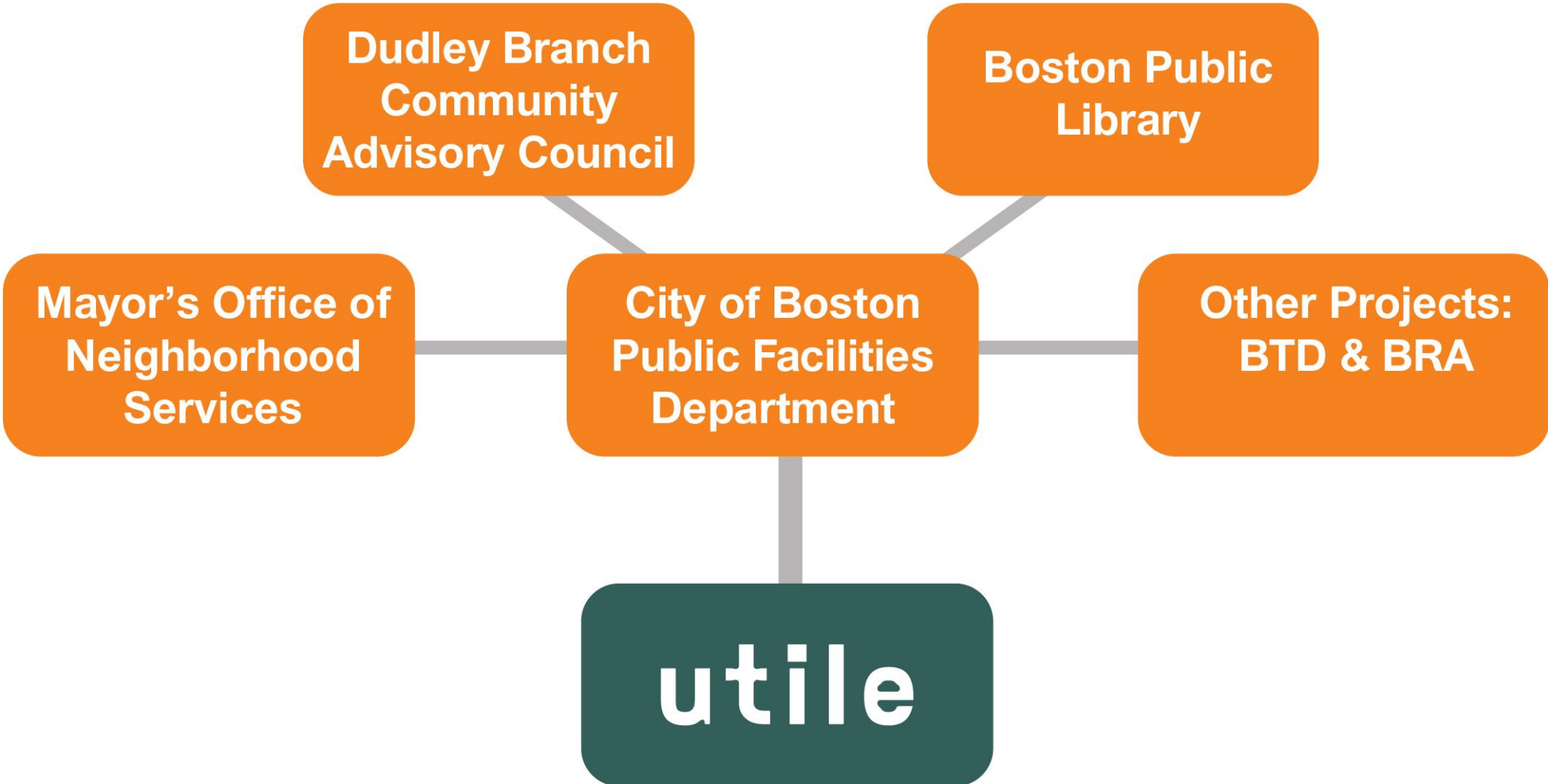
September 27, 2016

Meeting Agenda

- Introductions
- Goals
- Program and Updates
- Schedule
- Discussion



The Team



Goals



Goals for Reimagining the Dudley Branch Library

- **“Open up”** the building to better **connect to the site** and consider opportunities to **“warm up”** its exterior presence.
- **Improve spatial definition** to better respond to specific user groups and establish hierarchy and orientation within the library.
- Create a **meaningful connection** between levels.
- **Improve building performance** and energy efficiency of sustainable building systems.
- Strengthen digital resources.
- Enhance local history display.
- Ensure accessibility throughout the building and site.
- Improve signage and wayfinding
- Modernize furnishings and equipment



Program and Updates



Programming Study for the Dudley Branch, September 2013

- Yearlong process with eight public meetings.
- PFD, BPL and a Community Advisory Committee were primary stakeholders in the process.
- **Phase 1** – Existing conditions analysis including comprehensive review of building systems.
- **Phase 2** – Programming study to optimize sizes and adjacencies for all library functions.
- **Phase 3** – Development of guiding principles for design and project budget.



Areas of Concern

Architectural Aesthetics



Disconnected Entries



Areas of Concern

Library Volume

- Central space has great bones but can be better configured.
- Spatial definition
- Acoustic separation
- Signage and Wayfinding
- Furnishings at the end of useful life



Front Plaza



Library Staff cannot monitor plaza

Alleyway is difficult to monitor

Front Plaza is a public safety area of concern identified by BPD

Future Implications - BRA B2 Parcel and BTD Complete Streets

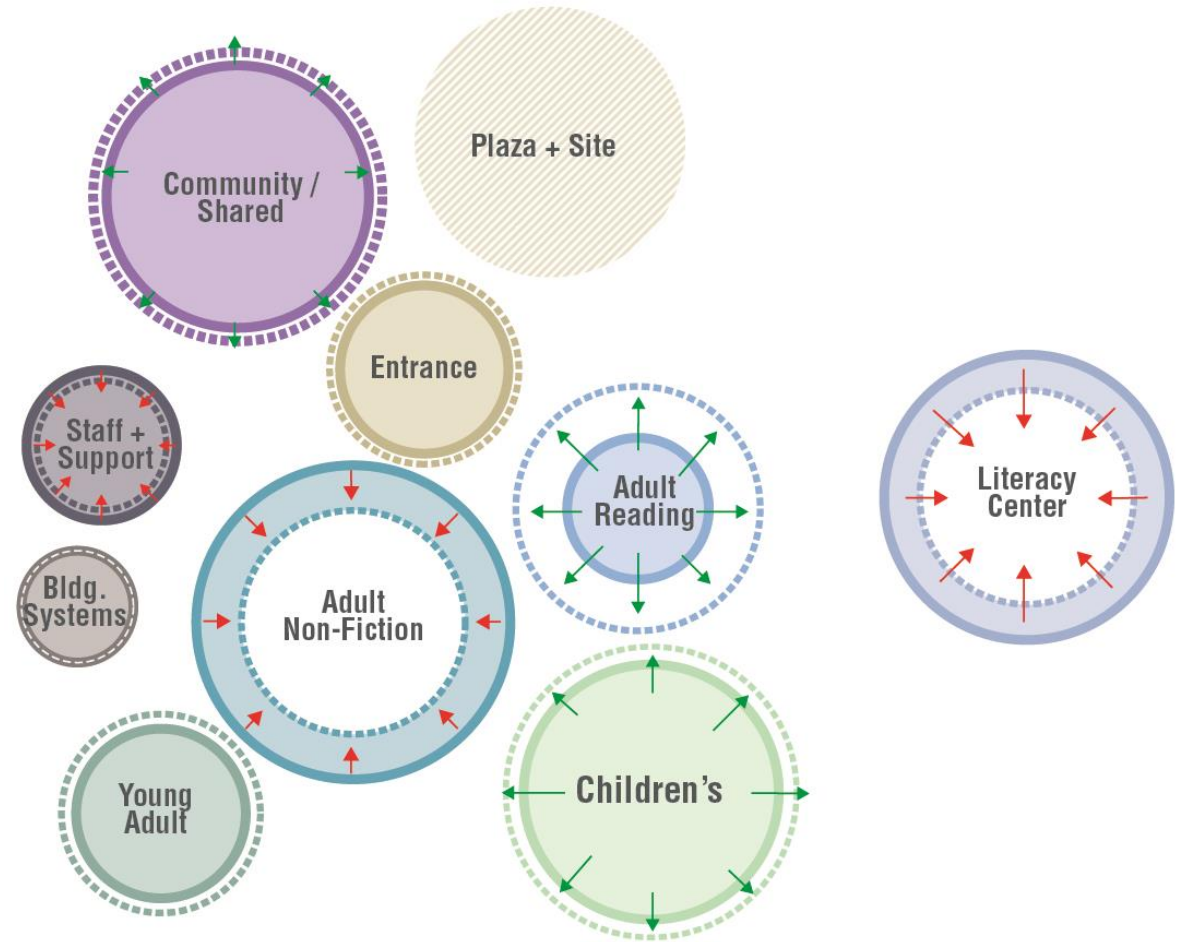
BRA – Design guidelines for redevelopment of old B2 police station site

The image is an architectural site plan of the Dudley Branch Library area. It features a large, light blue shaded area representing the BRA B2 Parcel, which is outlined with a dashed orange line. A red line with a white circle at its end points from a text box to this parcel. To the left is a large, multi-story building with a complex footprint. A green line with a white circle at its end points from a text box to a path along Warren Street. The street is labeled 'WARREN STREET' and shows various lane markings, including a green-paved area for a complete street. Other streets shown include 'LEWIS STREET' and 'HUNTER STREET'. The plan includes details of buildings, trees, and street furniture.

BTD Complete Streets Redesign

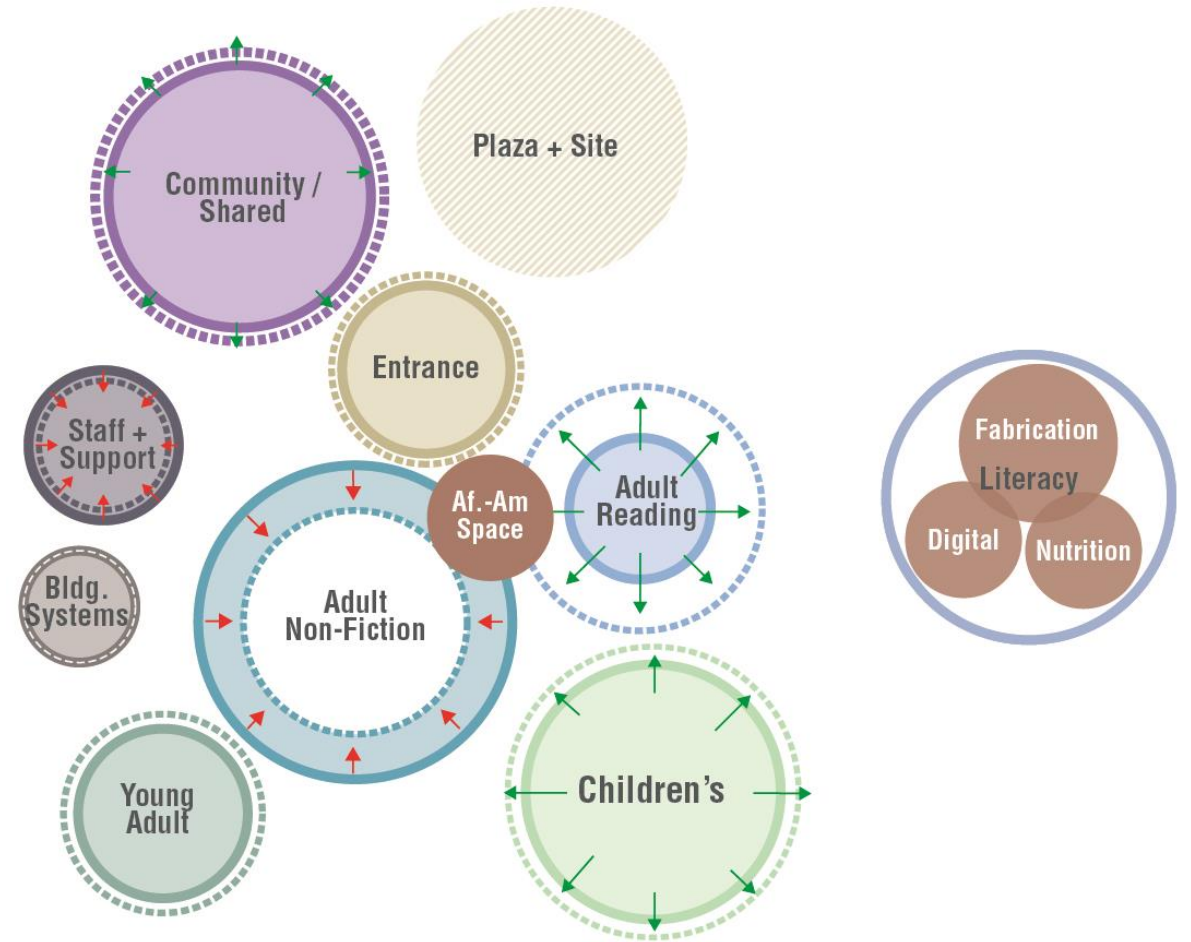
Program Zones

- Area changes reflect the evolving demands on the use of the library.
- **Entrance** – Will include new program including display shelving and prominently feature artwork.
- **Adult Reading** – Will increase to provide a variety of comfortable seating options.
- **Young Adult** – Establish dedicated, well defined space with lounge areas and digital resources.
- **Children's Area** – Consider proximity to supporting program spaces like children's bathrooms.
- Compliance with accessibility guidelines may cause some areas to increase. In particular, bathrooms and kitchen areas will be affected.

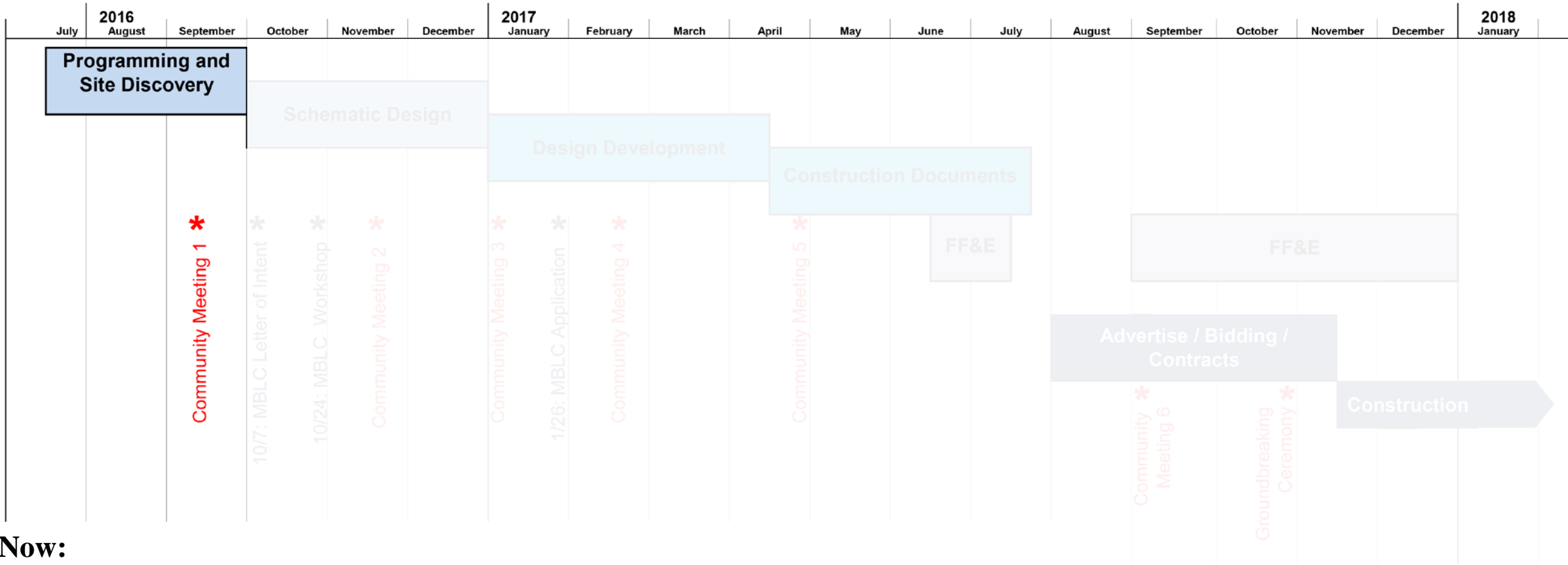


Program, Recent Updates

- The Literacy Center as previously understood, has been successfully integrated within all library branches.
- That space can meet needs of the expanding role of library –s fabrication, nutritional literacy. As a hands-on space focused on skill building, this and will strive to attract young adults in particular to library
- An African American Collection will be incorporated. This will house 1,500 books, seating and feature art.

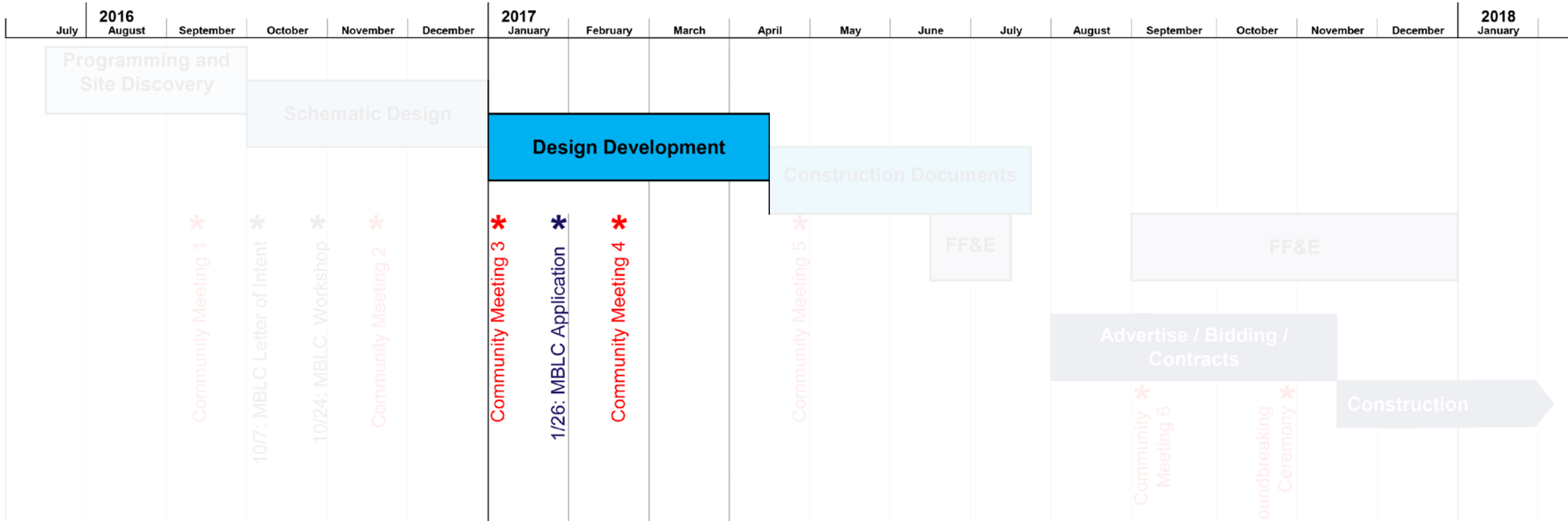


Design Schedule



- Now:**
- Listen to the concerns of CAC for this design effort
 - Review conclusions of Study for collections, seating and space planning.
 - Consider new opportunities resulting from program modifications
 - Coordinate with the BTB and BRA on adjacent efforts for a comprehensive effort.

Design Schedule



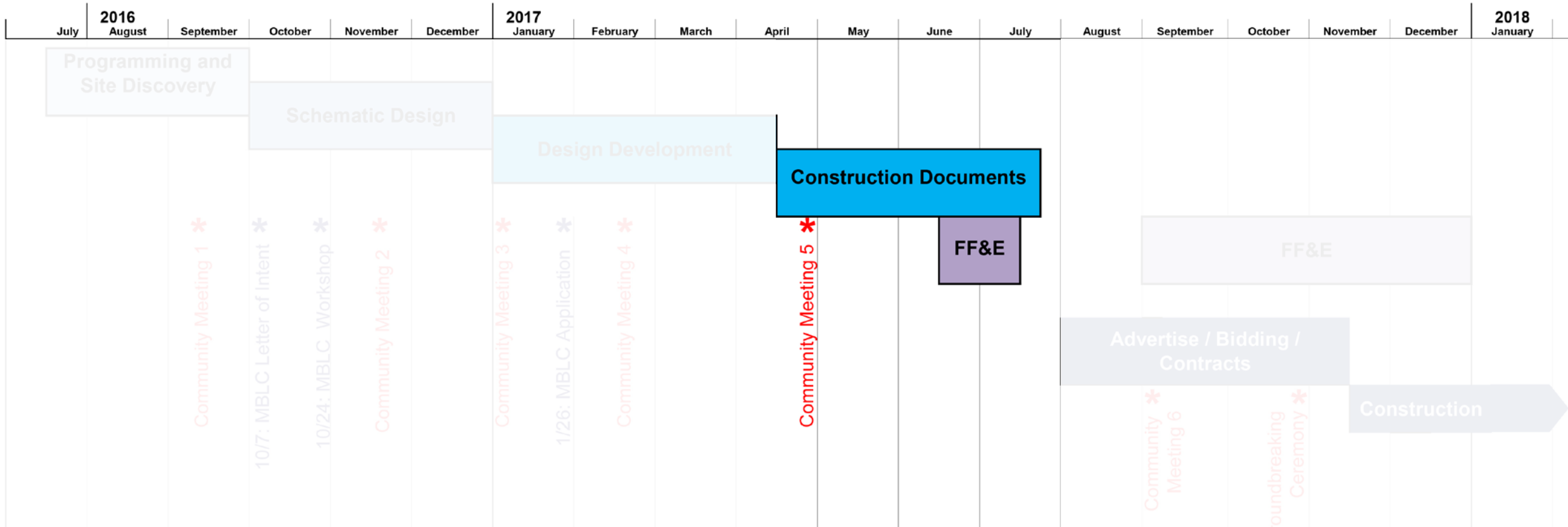
Winter 2017 - Spring 2017:

Refine design

Develop options for building exterior and landscape

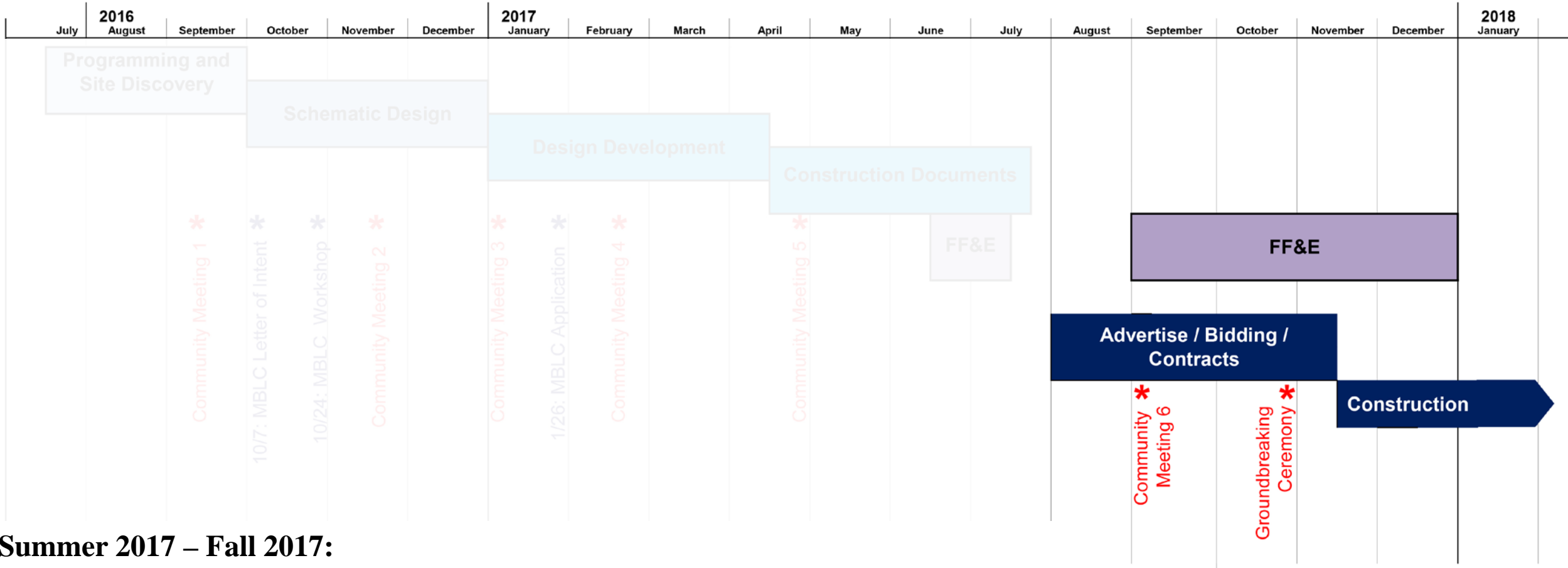
Submit MBLC Application

Design Schedule



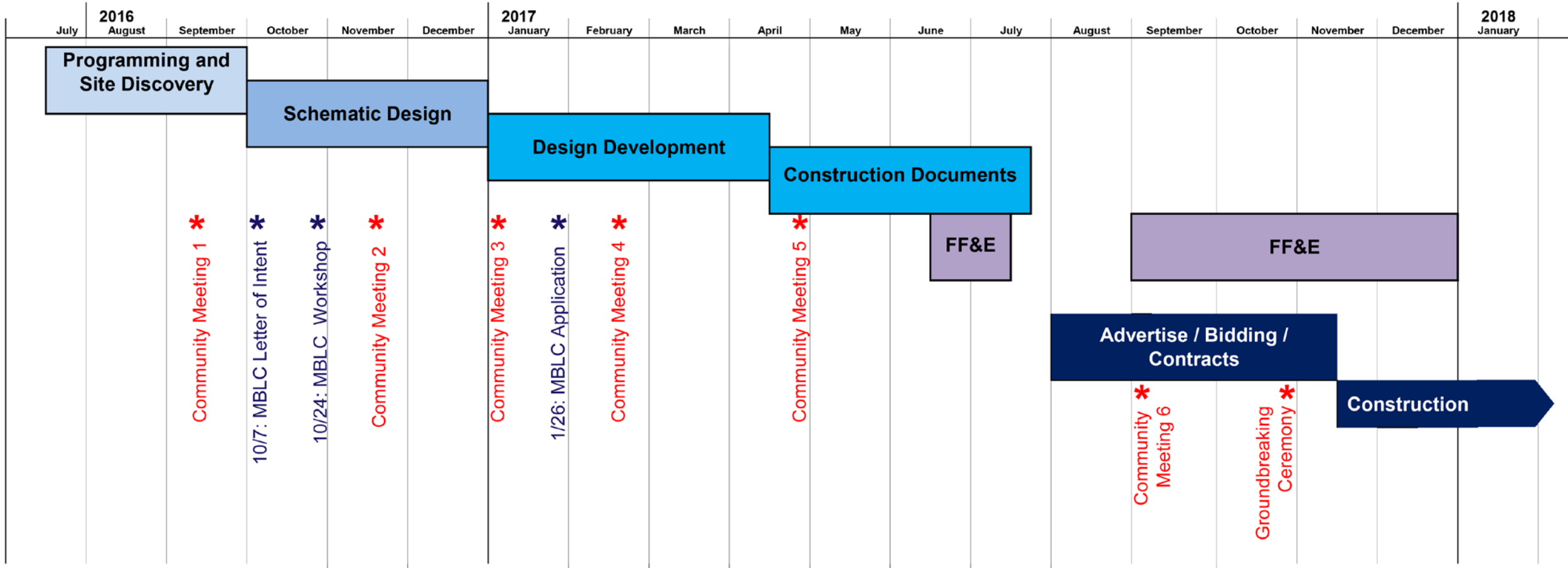
Spring 2017 - Summer 2017:
 Prepare Construction Documents
 Develop interior environment

Design Schedule



Summer 2017 – Fall 2017:
 Study furnishings
 Groundbreaking Ceremony
 Library closes for construction

Design Schedule



Feedback



compass@bpl.com

Thank You!



