

Chinatown Library Services Study

华埠图书馆服务调查

Public Meeting: April 25, 2017

民众见面会 2017年4月25日



MDS | MILLER DYER SPEARS
ARCHITECTURE PLANNING INTERIORS

Agenda

会议日程



- 1. Public Meeting Introduction** 民众见面会简介
- 2. Why a New Study** 为何发起新的研究
- 3. Study Scope and Outline** 研究范围与重点
- 4. Case Studies** 案例研究
- 5. Public Discussion** 民众讨论

Public Meeting #1

第一场欢迎会



MDS | architecture
planning
interiors

欢迎

Welcome!

Key Study Members

关键研究成员



Boston Public Library 波士顿公共图书馆

David Leonard
President 主席

Eamon Shelton
*Dir. of Operations - Project Manager** 执行主管-项目经理

Priscilla Foley
Chief of Neighborhood Services 社区服务主管

Michael Colford
Director of Library Services 图书馆服务主任

Alison Ford
Major Projects Program Manager 主要项目经理

City of Boston 波士顿市

Boston Planning and Development Agency

波士顿计划与发展机构

Mayor's Office of Neighborhood Services

市长办公室社区服务部

Friends of the Chinatown Library

华埠图书馆之友

Residents 居民

Community Groups 社群

Business / Civic Leaders 商家与民众领袖

MDS | Miller Dyer Spears

Myron Miller, AIA
Principal in Charge 校长

Danyul Cho, AIA
*Project Manager ** 项目经理

Donna Harris, RA
Project Planner 项目策划师

Nancy Davis, Ivy Group

Community Engagement 图书馆策划师

Patience Jackson
Library Planner 图书馆策划师

Maple Zou
Translator/ Interpreter 专业翻译

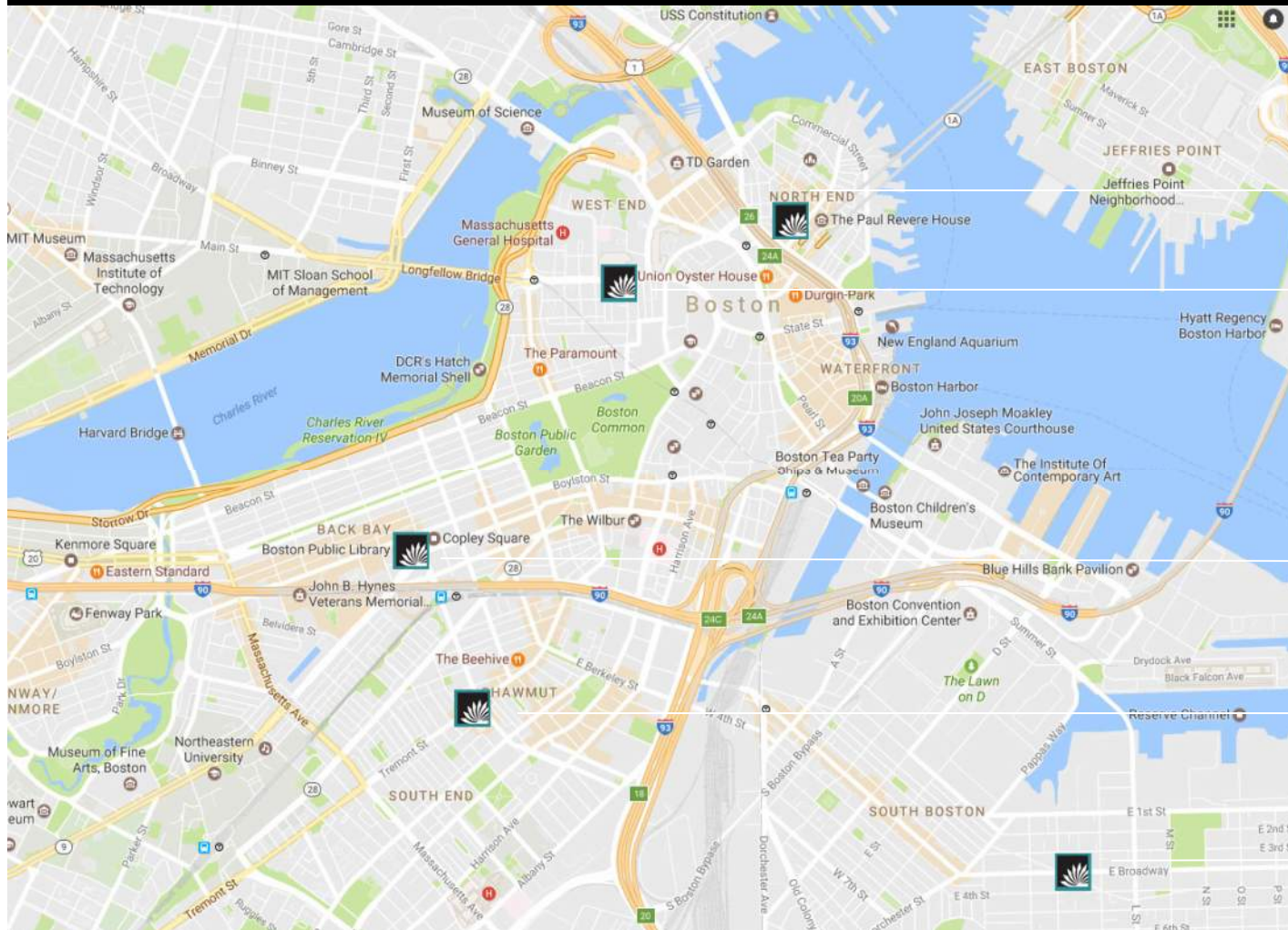


Why A New Study: Service Area and Demographics
为何发起新的研究： 服务区域和人口结构

Boston Public Library Branch Locations

波士顿公立图书馆分馆位置

MDS | architecture
planning
interiors



North End
北端

West End
西端

Central Library
中央图书馆

South End
南端

South Boston
南波士顿



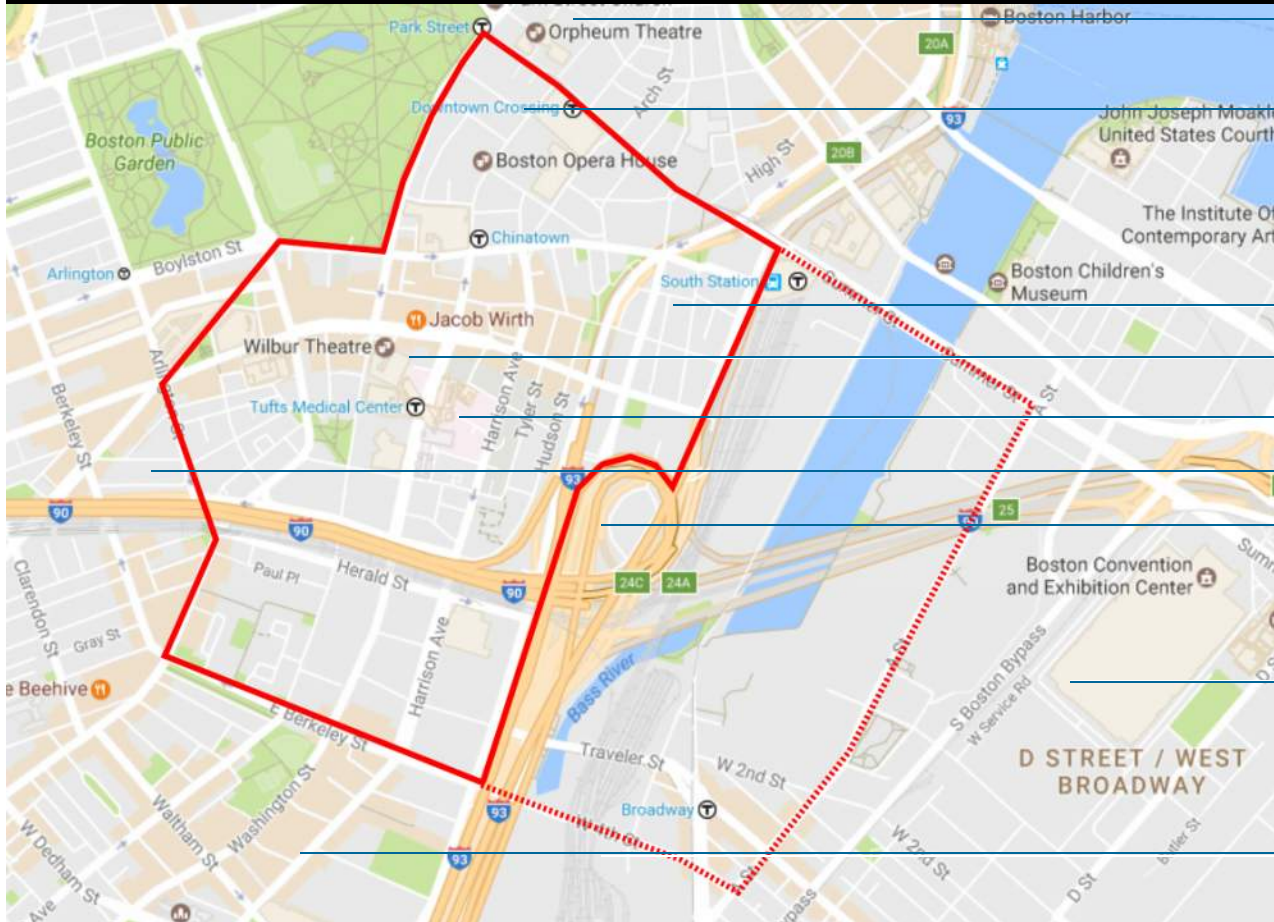
Boston
Public
Library



Tentative Service Area

计划的服务区域

MDS architecture
planning
interiors



Ladder District

—Downtown Crossing

–Leather District

– Theatre District

– Chinatown

– Bay Village

—South Bay

– South Boston

– South End



*Boston
Public
Library*



Demographics*

人口结构



MDS | architecture
planning
interiors

	Boston 波士顿	Chinatown 华埠
Changes 2000 – 2010 census 2000-2010年人口调查变化		
Population growth 2000-2010 2000-2010人口增长	4.89%	24.9%
Percent Asian Population 亚裔人口比例		
2000	7.5%	90%
2010	8.9%	77%
	总体服务区域 General Service Area	核心服务区域 Core Service Area

*Data Source: 2000 and 2010 US Census information 数据来源: 2000与2010美国人口调查信息
Compiled by: BPDA 由BPDA提供

Study Scope and Outline

研究范围与重点



MDS | architecture
planning
interiors

Information Gathering

信息收集

Spring 2017年春

- Information Gathering
- 信息收集
- Community Discussions
- 社区讨论
- Development of online survey
- 网上调查的发展

Public Meeting #1

第一场民众见面会

Initial Service Recommendations

初始服务推荐

Summer 2017 年夏

- Online survey
- 网上调查
- Focus groups
- 讨论小组
- Presentation of initial service concepts
- 初始服务概念的展示

Public Meeting #2

第二场民众见面会

Final Report

最终报告

Fall 2017 年秋

- Recommended Services Program
- 推荐服务项目
- List of potential sites
- 潜在地点清单
- Study Completed and Distributed
- 研究完成与派发

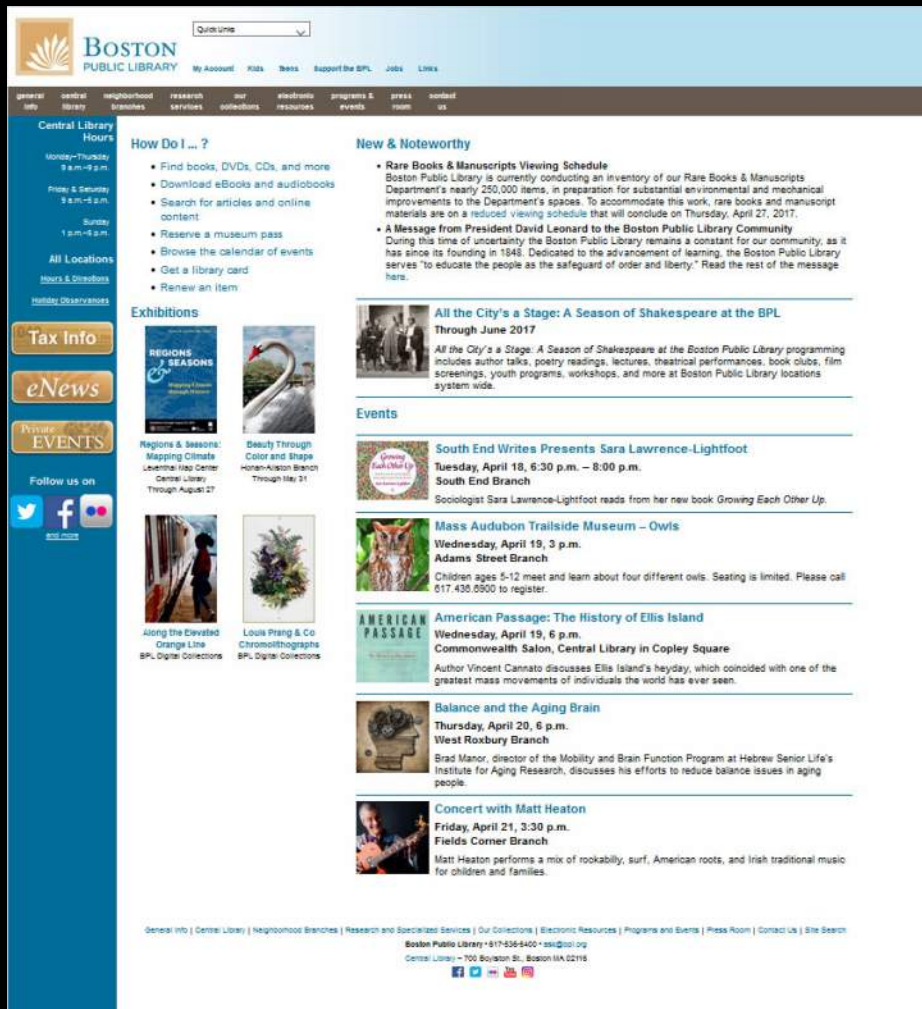
Public Meeting #3

第三场民众见面会

Online Survey 网上调查



MDS | architecture
planning
interiors



Online survey 反馈

-Questions will be developed to include information from today's meeting

-会参考今天会议的内容以设计下一阶段的问题

-Link will be hosted on the BPL web-site www.bpl.org

-网页链接将放在波士顿公立图书馆的网站www.bpl.org上

-Survey with Chinese Translation

-附有中文翻译的调查问卷

-Goal of the survey is to reach as wide a range of users as possible and determine types and level of services to be provided.

-调查问卷的目标是要针对尽量大范围的民众和用户进行调查以决定服务的类型和层次

-Condensed results will be included as part of the final report.

-调查的结果将被浓缩综合到最终报告当中

-Public comments will also be accepted at the email address below.

-民众意见还可以发到以下邮箱

feedback 反馈: Chinatownlibrarystudy@bpl.org

Focus Groups

小组讨论



MDS | architecture
planning
interiors

Focus groups will be held to have in-depth conversations with the following groups:

将针对一下话题进行深入的小组讨论:

Friends of the Chinatown Library

华埠图书馆之友

Resident groups (including surrounding neighborhoods)

居民小组（包括周边的社区）

Seniors, parents of young children, and teens

长者，幼童的家长，及青少年

Civil, cultural, and business leaders

民权事务，文化事务及商界领袖



Case Studies 案例分析



MDS | architecture
planning
interiors

Philadelphia Independence Branch Library

费城独立图书馆分馆

facts at a glance 简要事实:
opened in 2001 于2001年开放
8520 square feet 面积为8520平方尺
3rd busiest in Philadelphia system 费城图书馆系统中第三大最受欢迎的分馆
turnstile count (2016) 177,604 入馆人数 (2016) 177,604人次
circulation (2016) 205,274 书刊借阅量(2016) 205,274次



Case Studies 案例分析

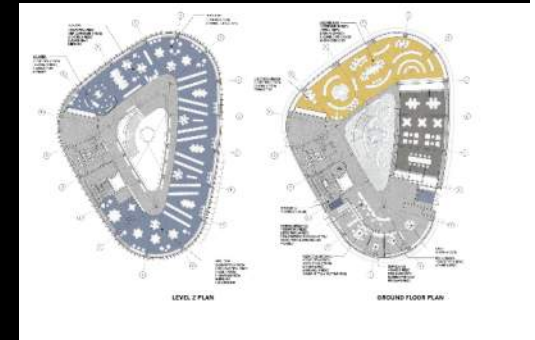
Chicago Public Library Chinatown Branch

芝加哥公立图书馆华埠分馆

facts at a glance 简要事实:
opened in 2015 于2015年开放
16,370 square feet 面积为16,370平方尺
turnstile count (2014 prior location) 235,057
入馆人数(2014前馆址) 235,057人次
circulation (2014 prior location) 123,889
123,889书刊借阅量(2014前馆址) 123,889次



MDS | architecture
planning
interiors



Temporary Facility 临时设施



*Boston
Public
Library*



MDS | architecture
planning
interiors



Public Discussion 民众讨论



- 1. How is Chinatown changing?**
华埠是变化如何？
- 2. What are the most pressing needs of the Chinatown community?**
华埠社区最迫切的需求是什么？
- 3. Why does Chinatown need its own distinct library services?**
为何华埠需要有自己的图书馆服务？
- 4. What library services do the residents of Chinatown want to use?**
华埠居民需要哪些主要的图书馆服务？
- 5. What do you imagine a library should look like?**
您想像中的图书馆是什么样的？
- 6. What do the study designers need to keep in mind to make a library successful?**
图书馆设计师要设计一个成功的图书馆要注意哪些重要问题？