

Dudley Branch Library Renovations



Martin J. Walsh, Mayor

Project #7084

City of Boston Public Facilities Department

Boston Public Library

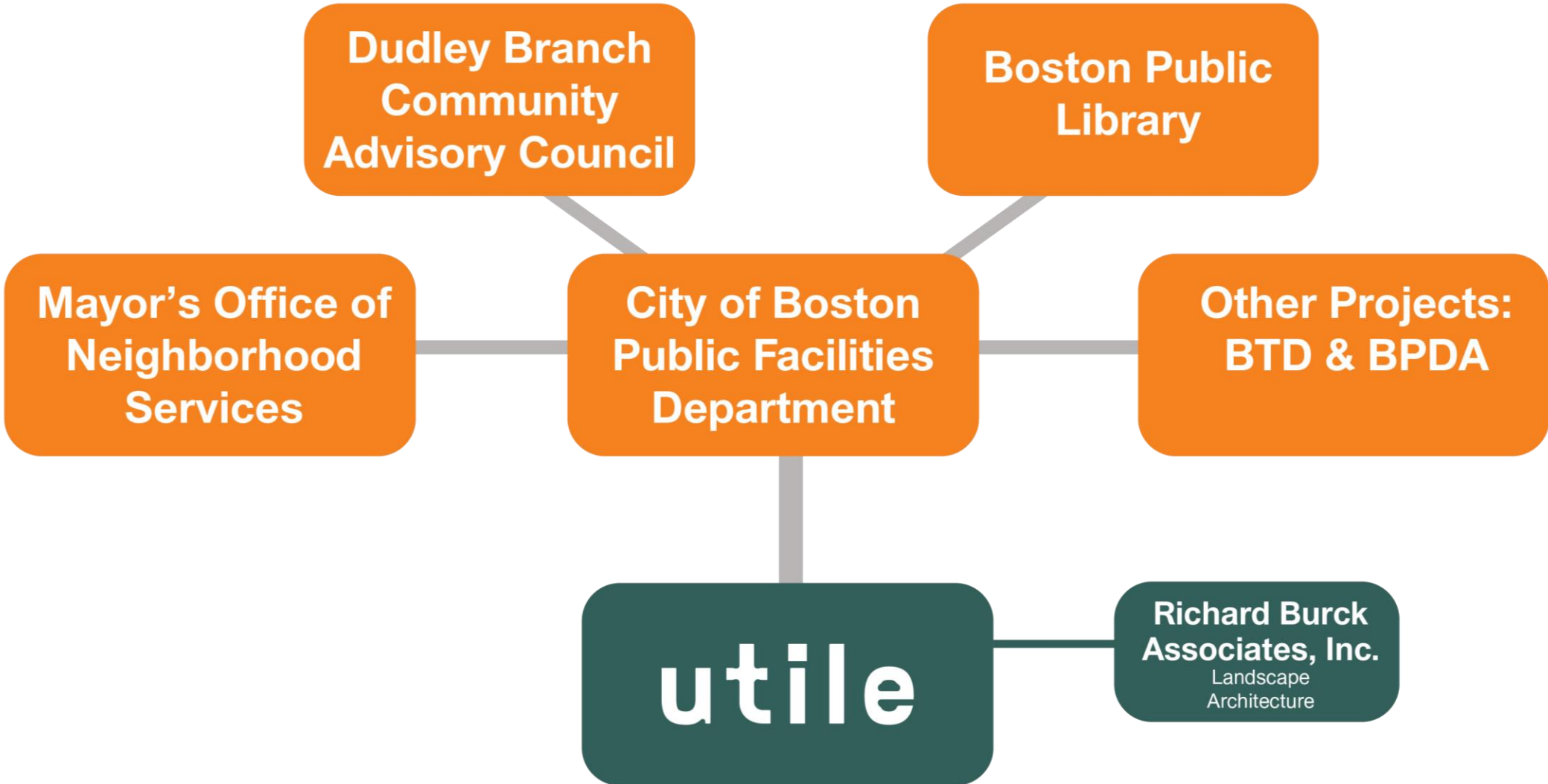
Utile, Inc. Architecture and Planning

May 9, 2017

Meeting Agenda

- Introductions
- Recap of Previous Meetings
- Exterior Design
- Percent for Art Program
- BTM Complete Streets Project Update
- BPDA Plan Dudley Project Update
- Project Schedule

The Team



Recap of Previous Meetings

Project Goals

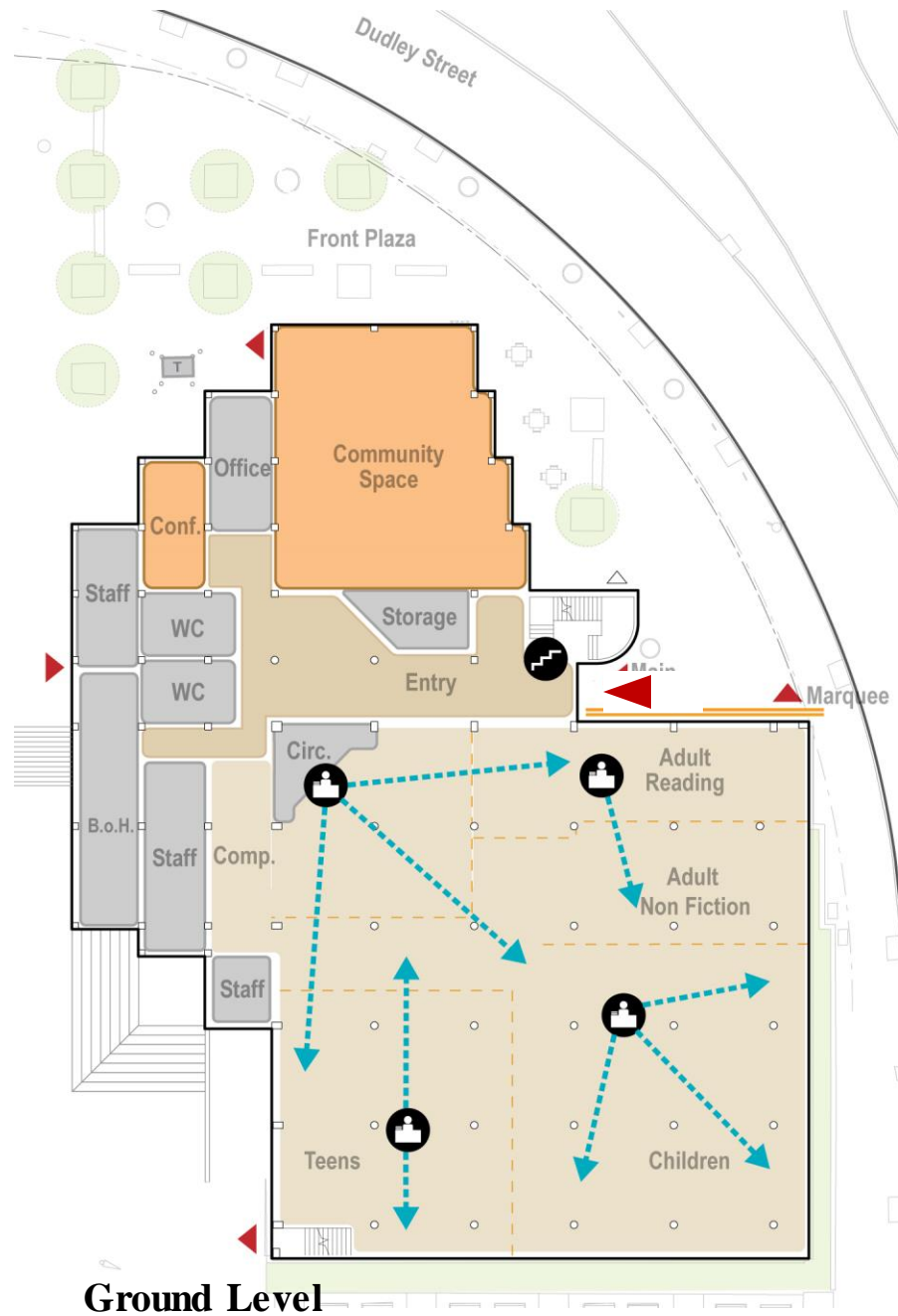
Reimagining the Dudley Branch Library

- **Open up** the building to better **connect to the site** and consider opportunities to “**warm up**” its exterior presence.
- **Create better defined spaces** within the library
- Improve signage and wayfinding
- **Incorporate flexibility** to meet evolving programming needs.
- **Improve building performance** and energy efficiency of sustainable building systems.
- Strengthen digital resources.
- Create more **opportunities for Art.**
- Enhance **local history** display.
- Ensure accessibility throughout the building and site.
- Modernize furnishings and equipment

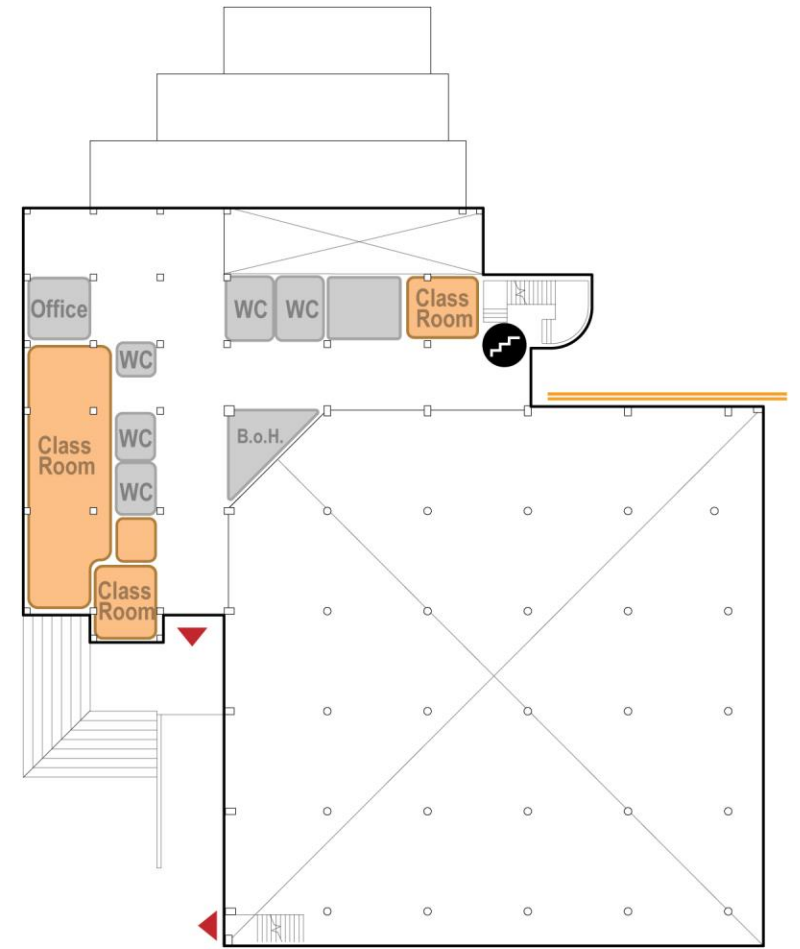


Recap

Existing Plans



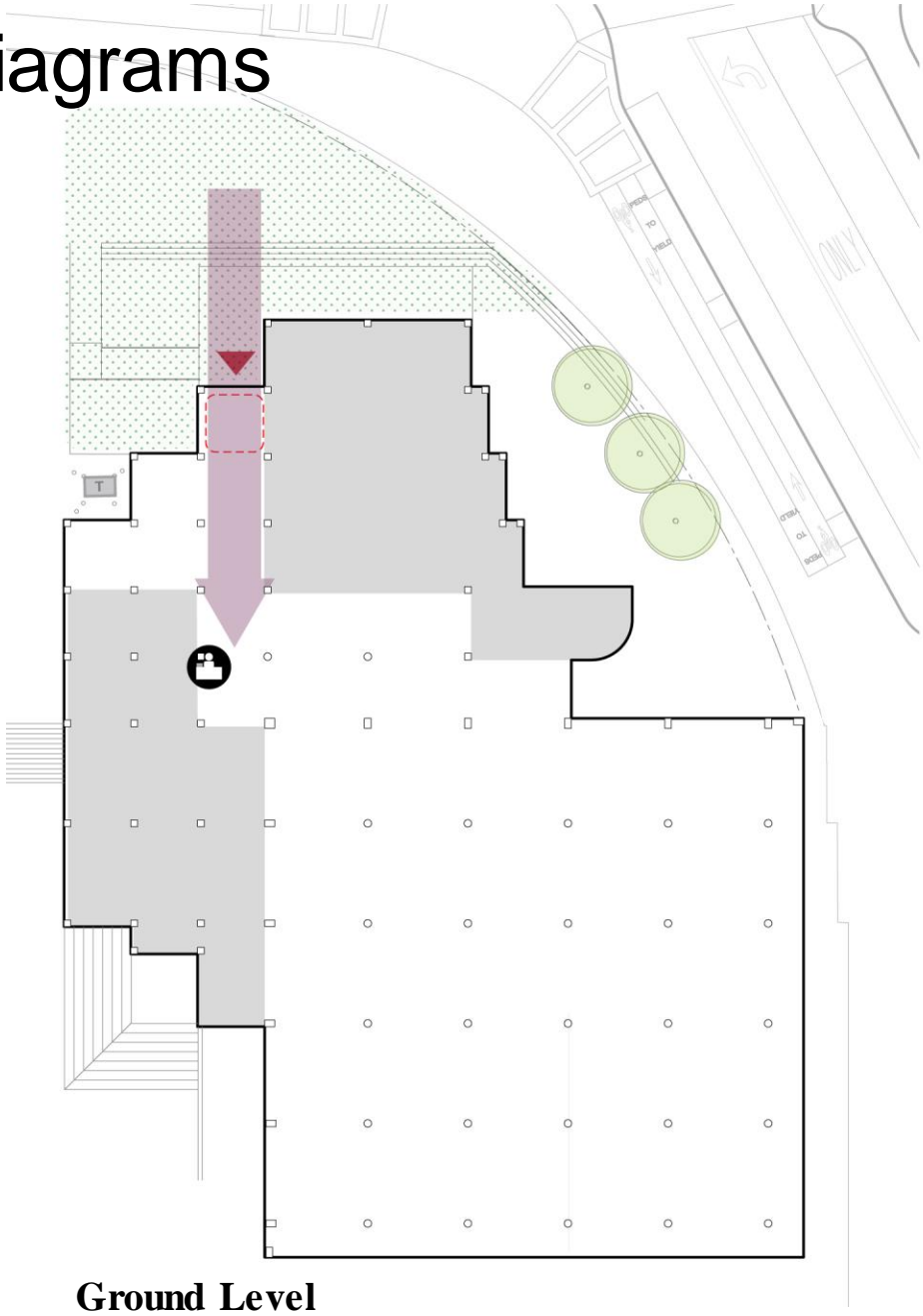
Ground Level



Upper Level

Organizational Diagrams

- **Entrance:** Orient location of entrance to enhance civic presence and create welcoming arrival.

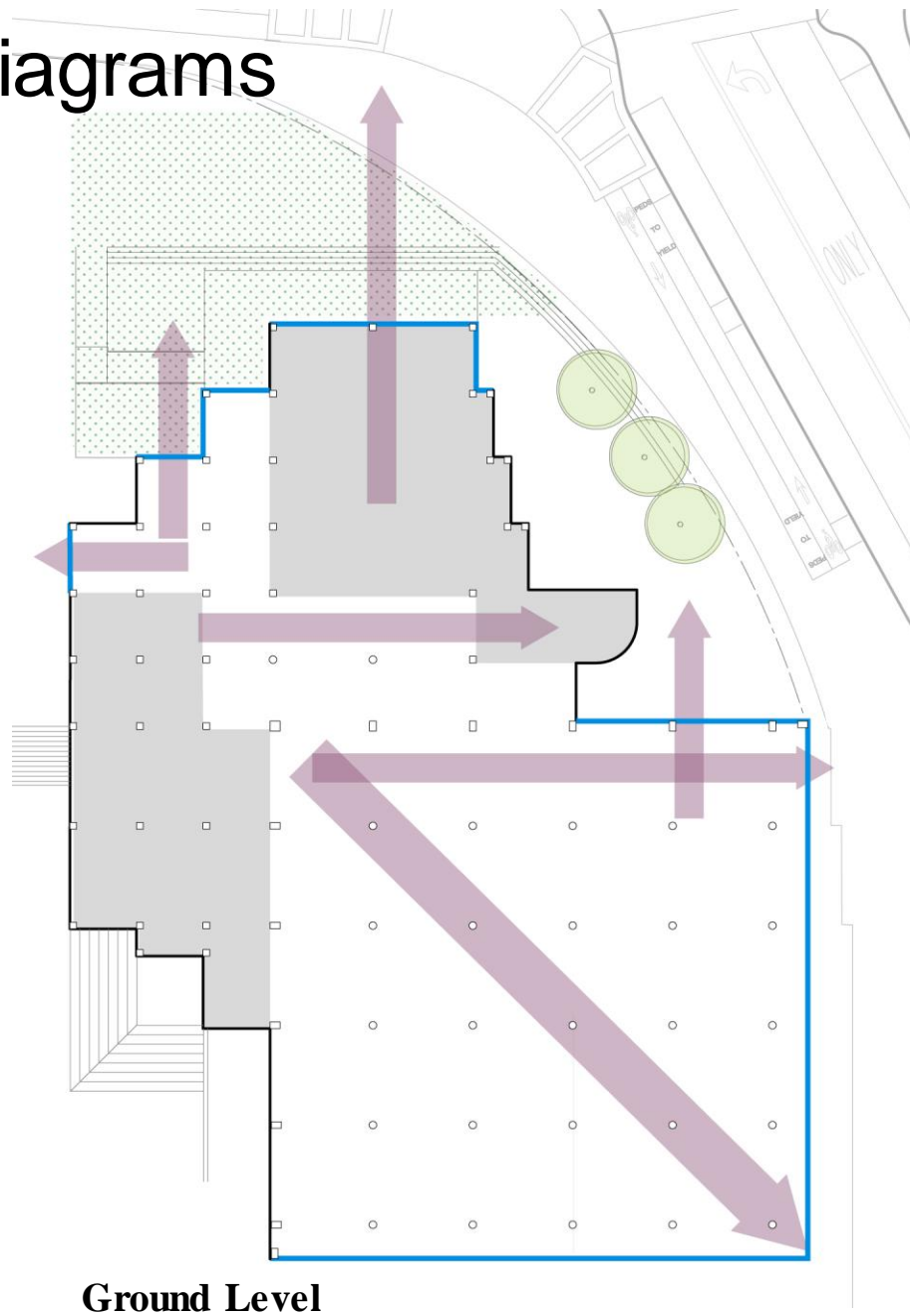


Ground Level



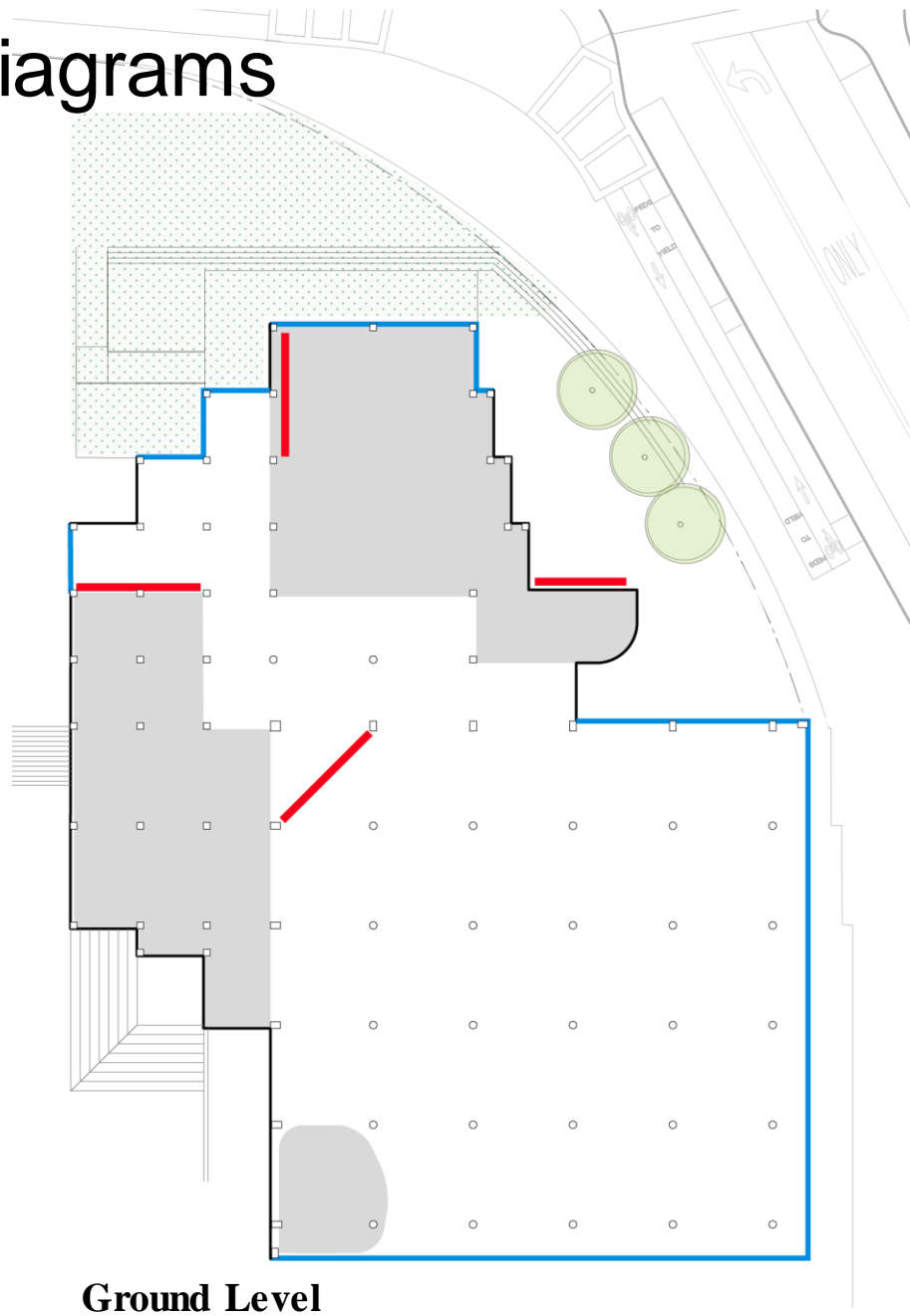
Organizational Diagrams

- **Entrance:** Orient location of entrance to enhance civic presence and create welcoming arrival.
- **Openness:** Enhance visibility between the library and the surroundings.
- **Organizing Views:** Consider key view to help organize main library space.



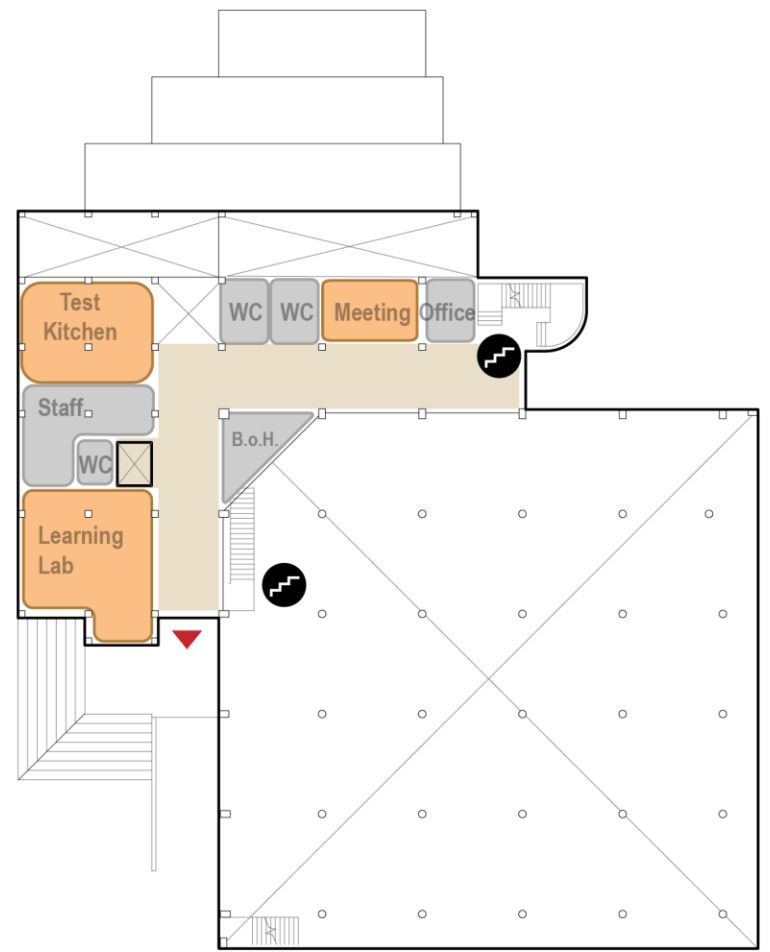
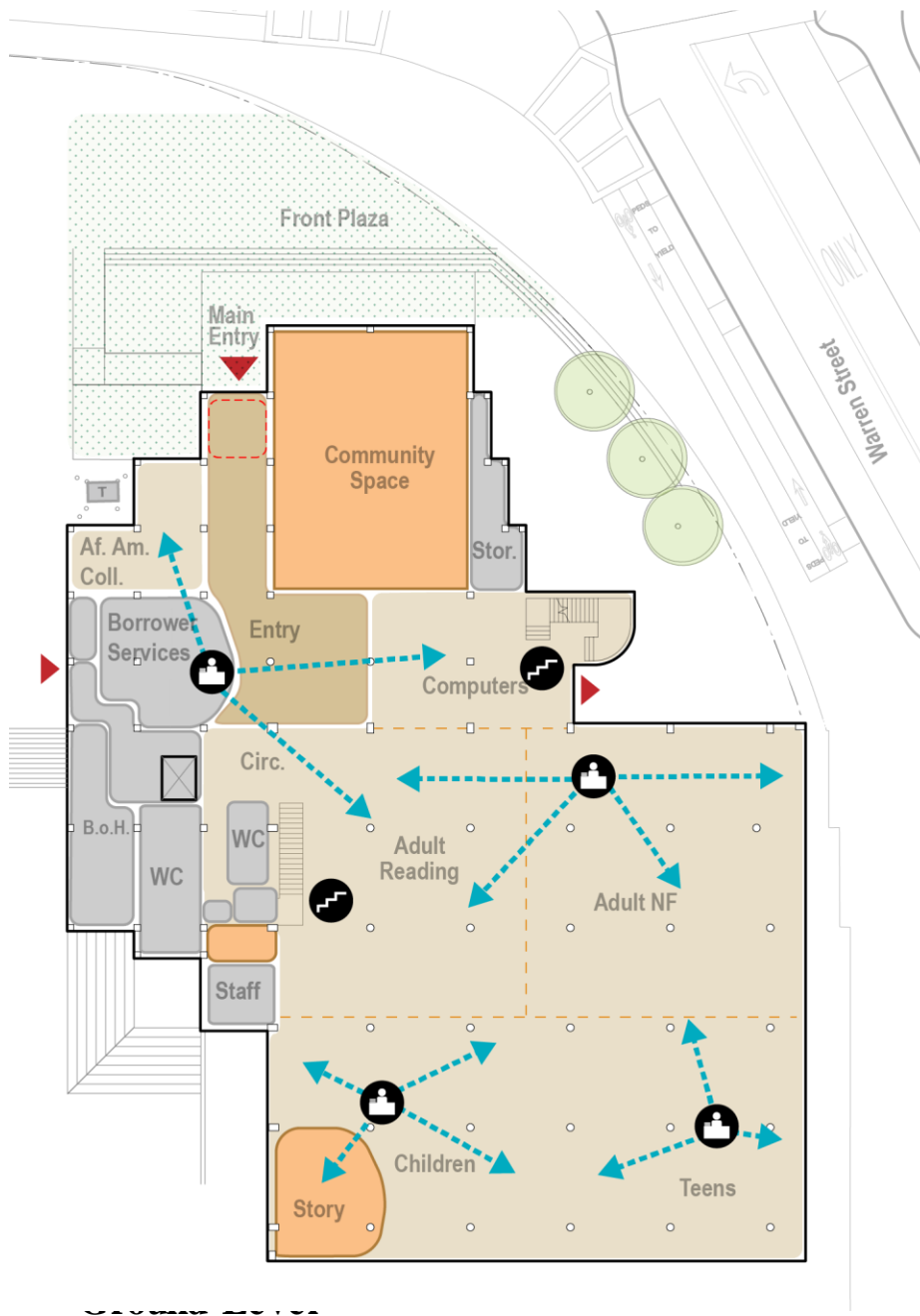
Organizational Diagrams

- **Entrance:** Orient location of entrance to enhance civic presence and create welcoming arrival.
- **Openness:** Enhance visibility between the library and the surroundings.
- **Organizing Views:** Consider key view to help organize main library space.
- **Art:** Integrate art with the library



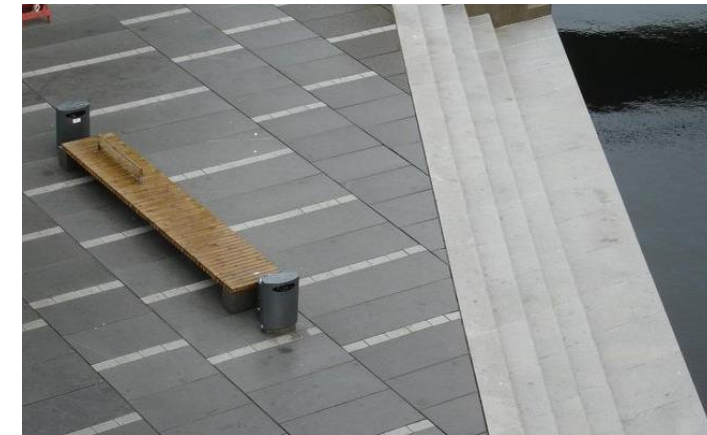
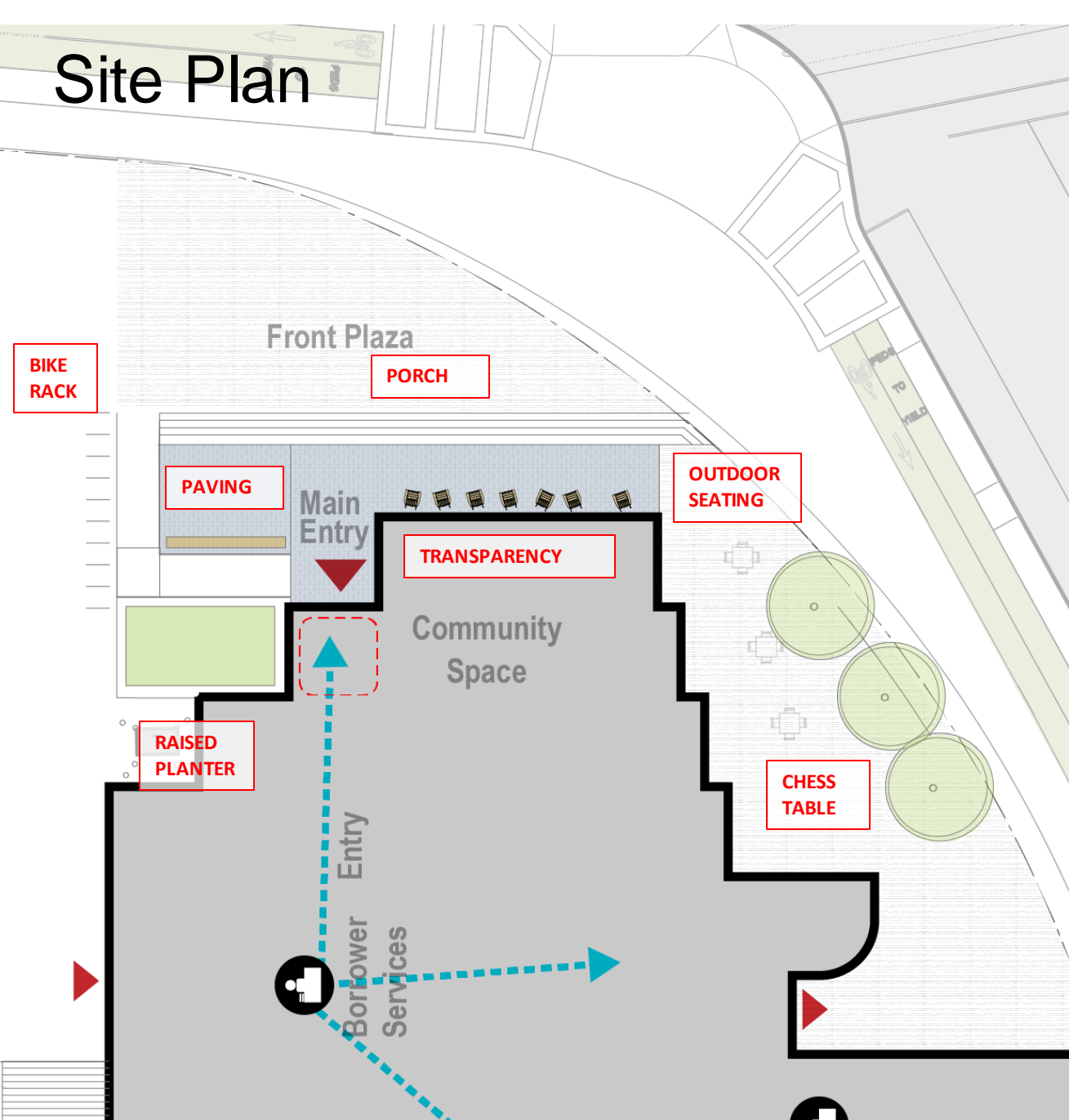
Program Plans

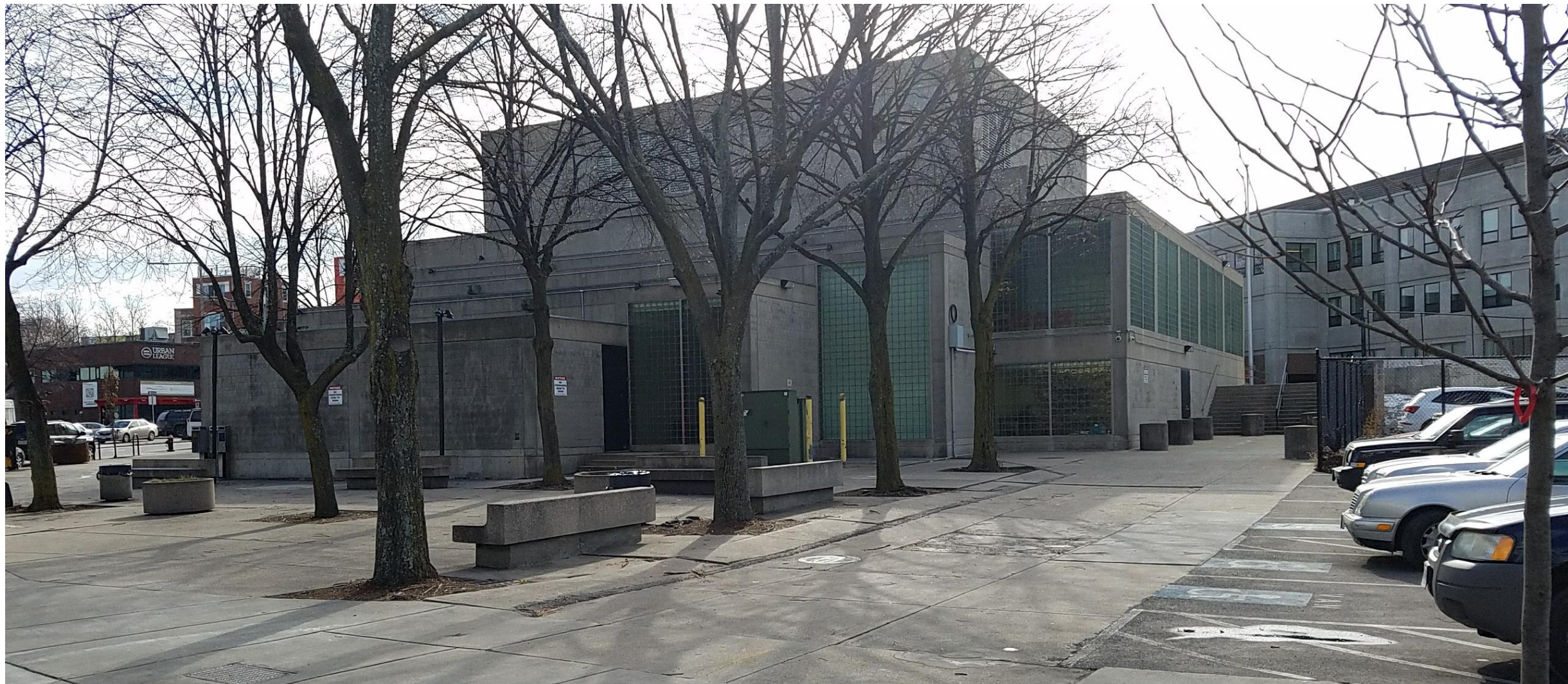
Updated Concept Plan



Exterior Design

Site Plan









Percent for Art Program



Percent for Art Program

City of Boston

Mayor's Office of Arts and Culture

Boston Art Commission



Boston Art Commission

The BAC is the commissioning body for the City of Boston. It **holds contracts** with artists, **approves** artwork on City land, and **conserves** the City of Boston's collection of art and historical artifacts.



Public Art Vision

We promote innovative & transformative artworks that: **engage** the community, **enrich and enliven** the urban environment, are driven by a **clear artistic vision**, enhance the **diversity of the existing collection**, are **site specific**, and are **built to last**.



Percent for Art Program

The Percent for Art program is an initiative of [Boston Creates](#). The program demonstrates the City's commitment to [sustainable funding for the arts](#) by setting aside one percent of the City's annual capital borrowing budget for the commissioning of [public art](#).



Public Art + Capital Projects

Percent for Art will integrate public art in City capital projects, engage city agencies and municipal partners on best public art practices, and create high quality and **meaningful public art.**



Guidelines

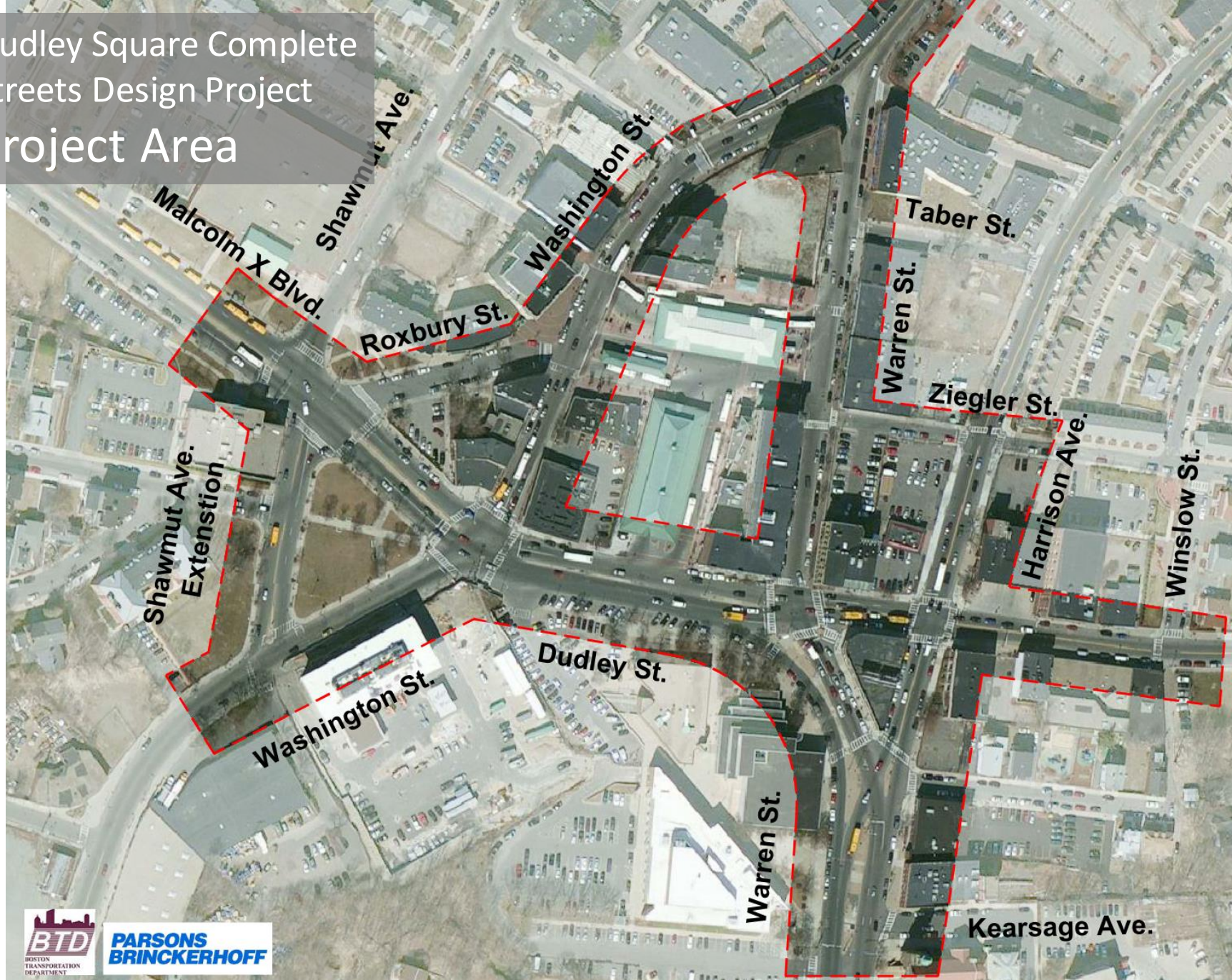
- Funding equitably across neighborhoods
- 6 Projects / year
- Permanent art
- High impact - public buildings and public sites
- Starting the process early

Timeline



BTD Complete Streets Project Update

Dudley Square Complete Streets Design Project Project Area



- Currently refining our 25% drawings. Plans under review
- Stakeholder meetings ongoing
- Next Community Meeting September
- Continuing coordination
 - Dudley Branch Library
 - Planned Development Projects
 - Gourdin Park
 - Malcolm X cycle track
 - MBTA
- Funded for construction (approx 9mil)

- Complete Final Design - January 2018
- Advertise for Construction – Spring 2018
- Begin Construction – Summer 2018

Summary of Preferred Alternative

Bus Circulation	<ul style="list-style-type: none">• 180+ miles reduction in bus travel → air quality improvements• Creates opportunity for public/pedestrian space within bus station• Eastbound buses uses Roxbury Street to bus station
Traffic Flow	<ul style="list-style-type: none">• New traffic signal equipment• Update signal timing & phasing• Maintain capacity
Parking	<ul style="list-style-type: none">• Loss of few on-street parking spaces
Pedestrian Accommodations	<ul style="list-style-type: none">• Shorter crosswalks and ADA improvements• New pedestrian signals
Bicycle Accommodations	<ul style="list-style-type: none">• Cycle track along Dudley Street & add bike lanes on street• Increased bicycle parking
Streetscape	<ul style="list-style-type: none">• New streetlights, trees, planting beds, “green elements”

Proposed Dudley Square

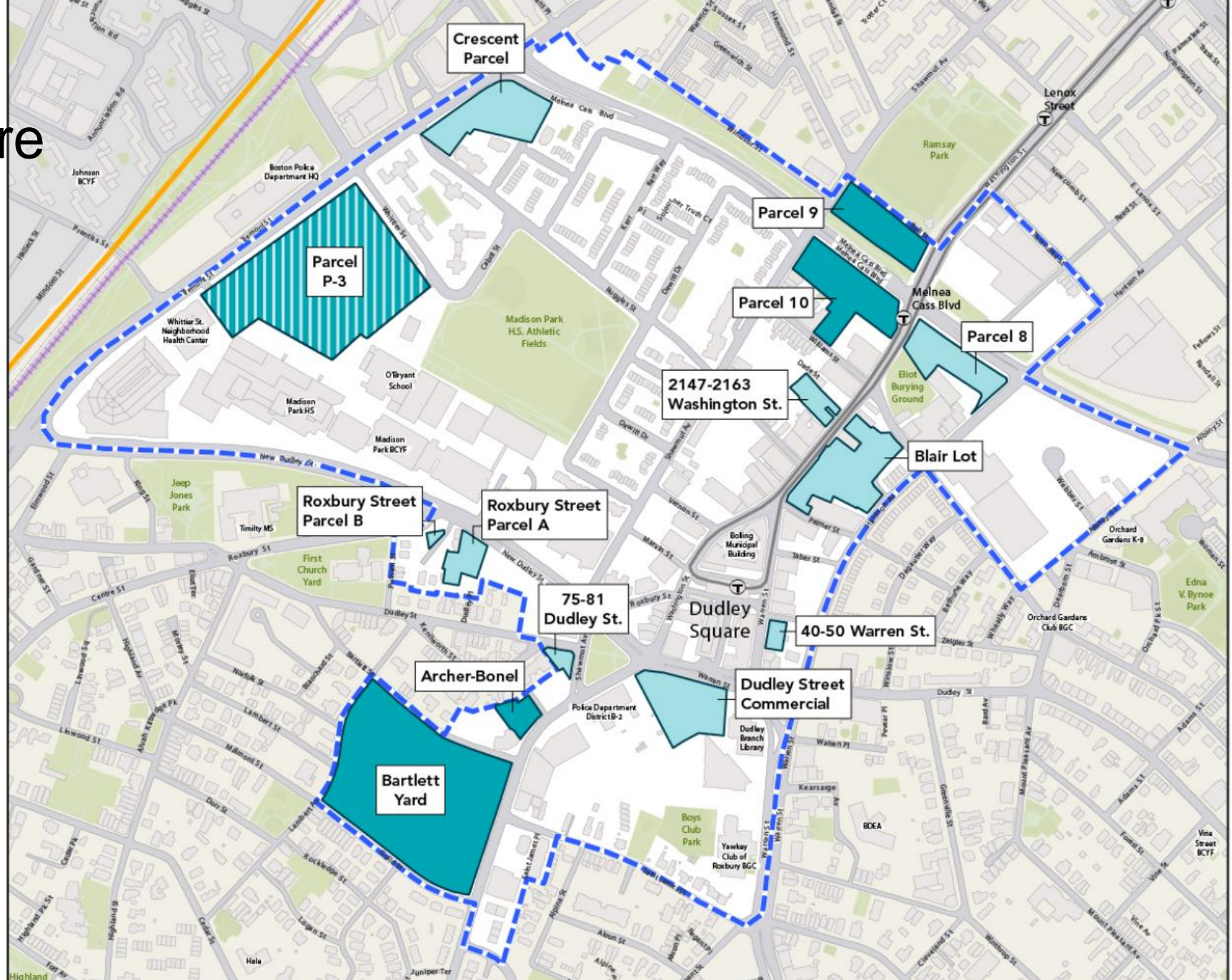


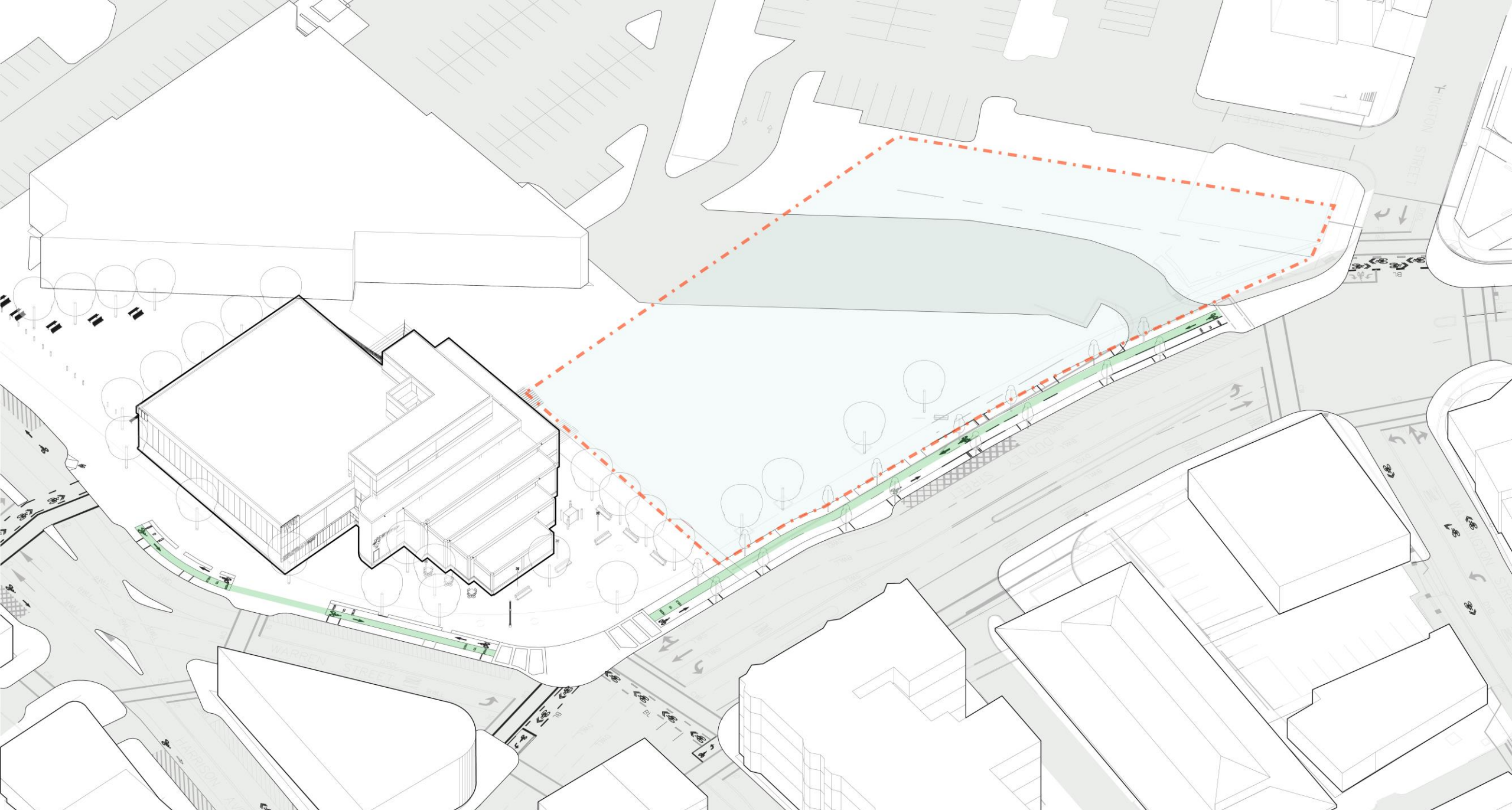
Dudley Street Rendering



BPDA PLAN: Dudley Square

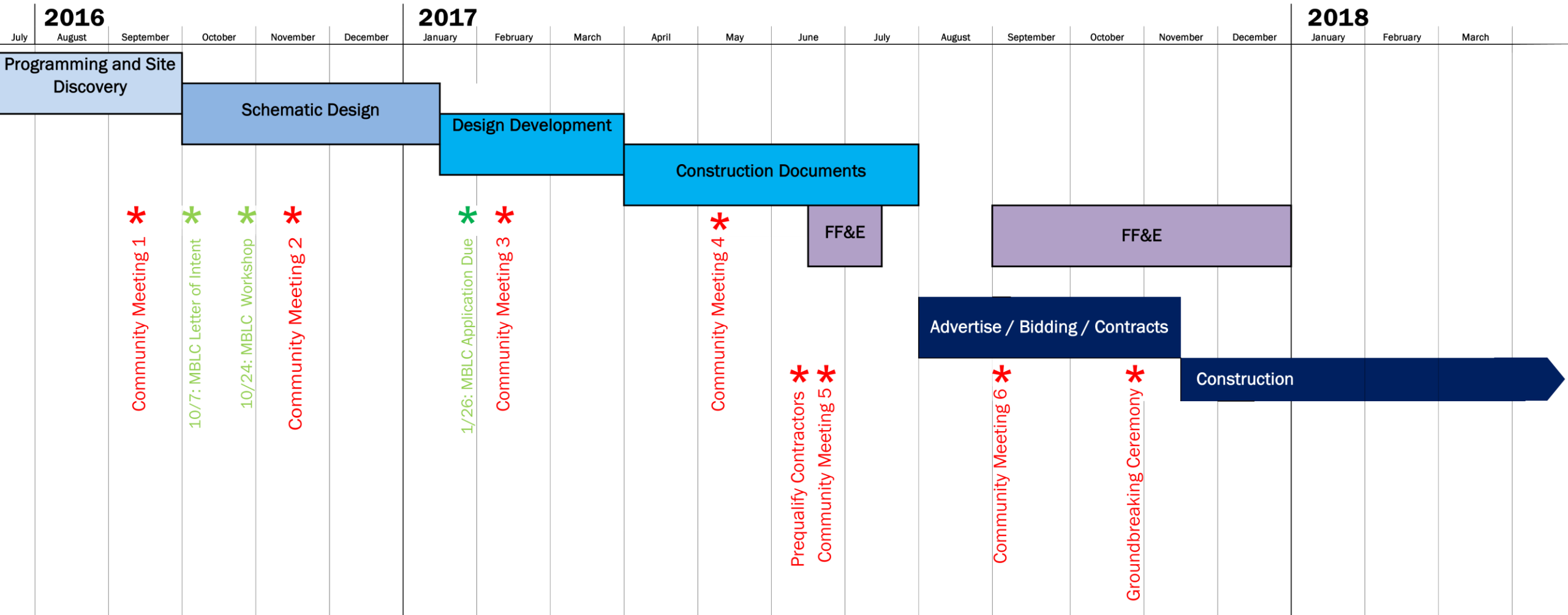
BPDA PLAN: Dudley Square





Project Schedule

Design Schedule



Thank You!



