

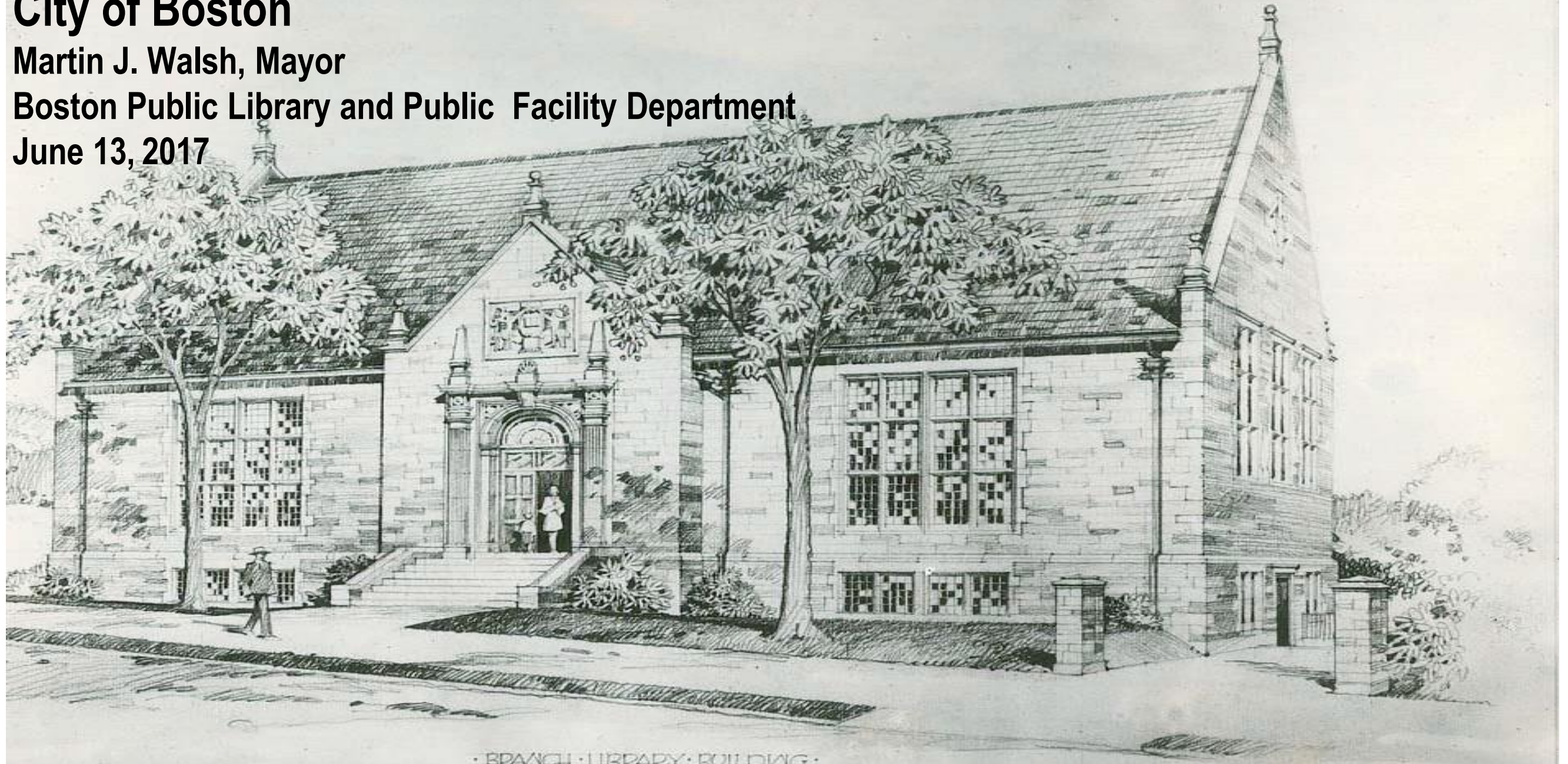
Parker Hill Branch Improvements

City of Boston

Martin J. Walsh, Mayor

Boston Public Library and Public Facility Department

June 13, 2017



Meeting Agenda:

- Introductions
- Recap of May 17th Meeting
 - Project Overview
 - Schedule
- Review of services and resources available during closure
- Questions



Project Team:

Public Facilities Department: Director, Tricia Lyons

Brian McLaughlin, Tom Leahy, James Sessum

Boston Public Library: President, David Leonard

Eamon Shelton, Priscilla Foley, Alison Ford

Architect: Bargmann Hendrie + Archetype, Inc.





- 1931** Building constructed.
- 1989** Mission Hill Triangle Historic District added to National Register
MHC review required.
- 2003** Petition to Boston Landmarks Commission for listing as an individual landmark accepted. Petition still 'Pending'.
BLC review required.
- 2005** Accessibility upgrades (exterior ramp, interior elevator) interior and exterior repairs.

Water damage in main reading room.

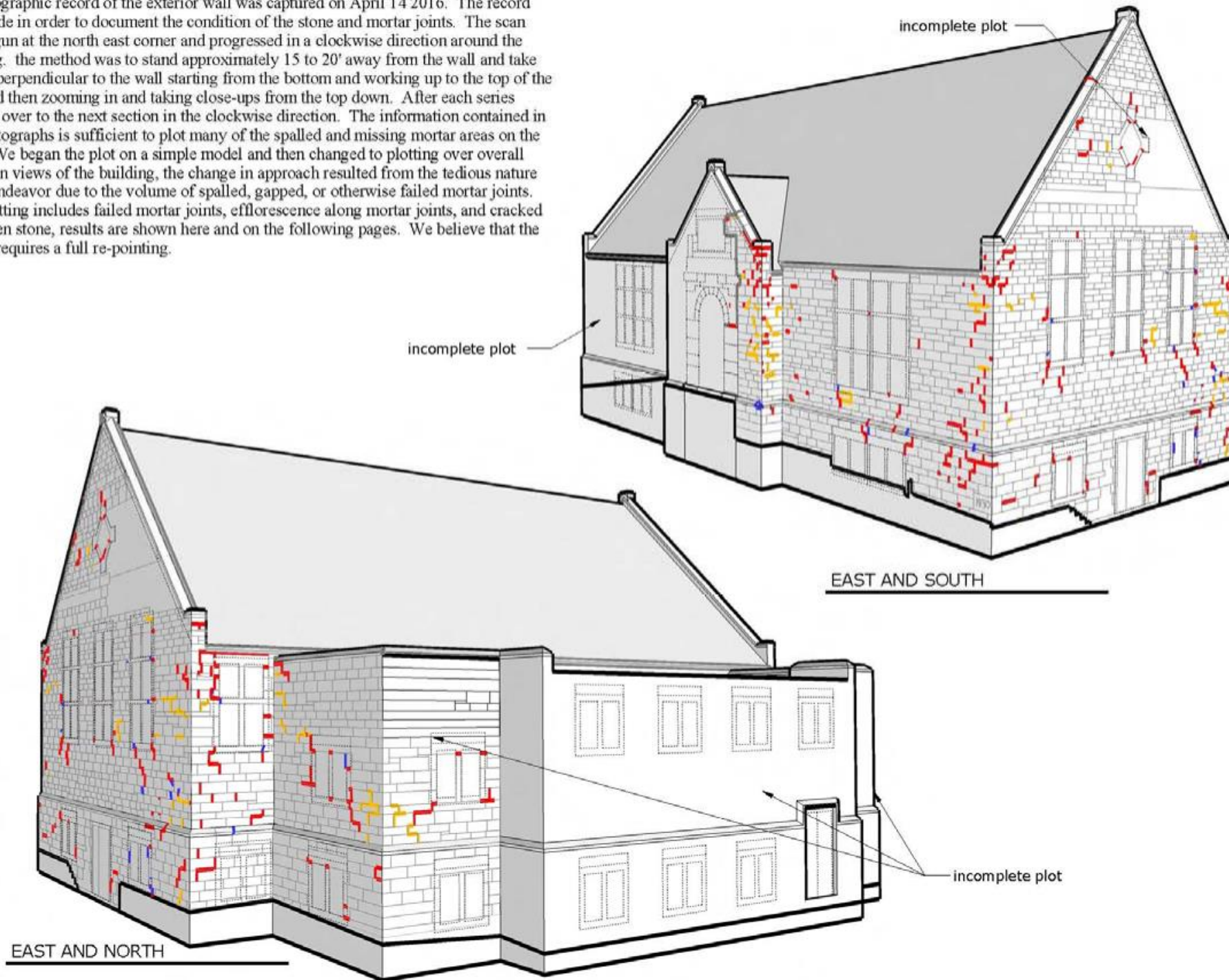




Water damage at east wall

Exterior Masonry - open joints and cracks in stone.

A photographic record of the exterior wall was captured on April 14 2016. The record was made in order to document the condition of the stone and mortar joints. The scan was begun at the north east corner and progressed in a clockwise direction around the building. the method was to stand approximately 15 to 20' away from the wall and take photos perpendicular to the wall starting from the bottom and working up to the top of the wall and then zooming in and taking close-ups from the top down. After each series moving over to the next section in the clockwise direction. The information contained in the photographs is sufficient to plot many of the spalled and missing mortar areas on the wall. We began the plot on a simple model and then changed to plotting over overall elevation views of the building, the change in approach resulted from the tedious nature of the endeavor due to the volume of spalled, gapped, or otherwise failed mortar joints. The plotting includes failed mortar joints, efflorescence along mortar joints, and cracked or broken stone, results are shown here and on the following pages. We believe that the mortar requires a full re-pointing.



R. J. Kenney Associates, Inc.
P.O. Box 1748
72 Washington St.
Plainville, MA 02762-0748
Phone: (508) 695-1526
Fax: (508) 695-2898

Title: Crack Survey Plot

Project:
Q283 Parker Hill Library,
Roxbury, MA

File Name: **////// Q283 Appendix B**

LEGEND

Cracked/Damaged Stone

Spall or Gaps along Mortar Joint

Efflorescence along Mortar Joint

[illegible]

CSP 01

Issue Date:

Scale:

Drawn By:

Checked By:	
-------------	--

Revision Date:

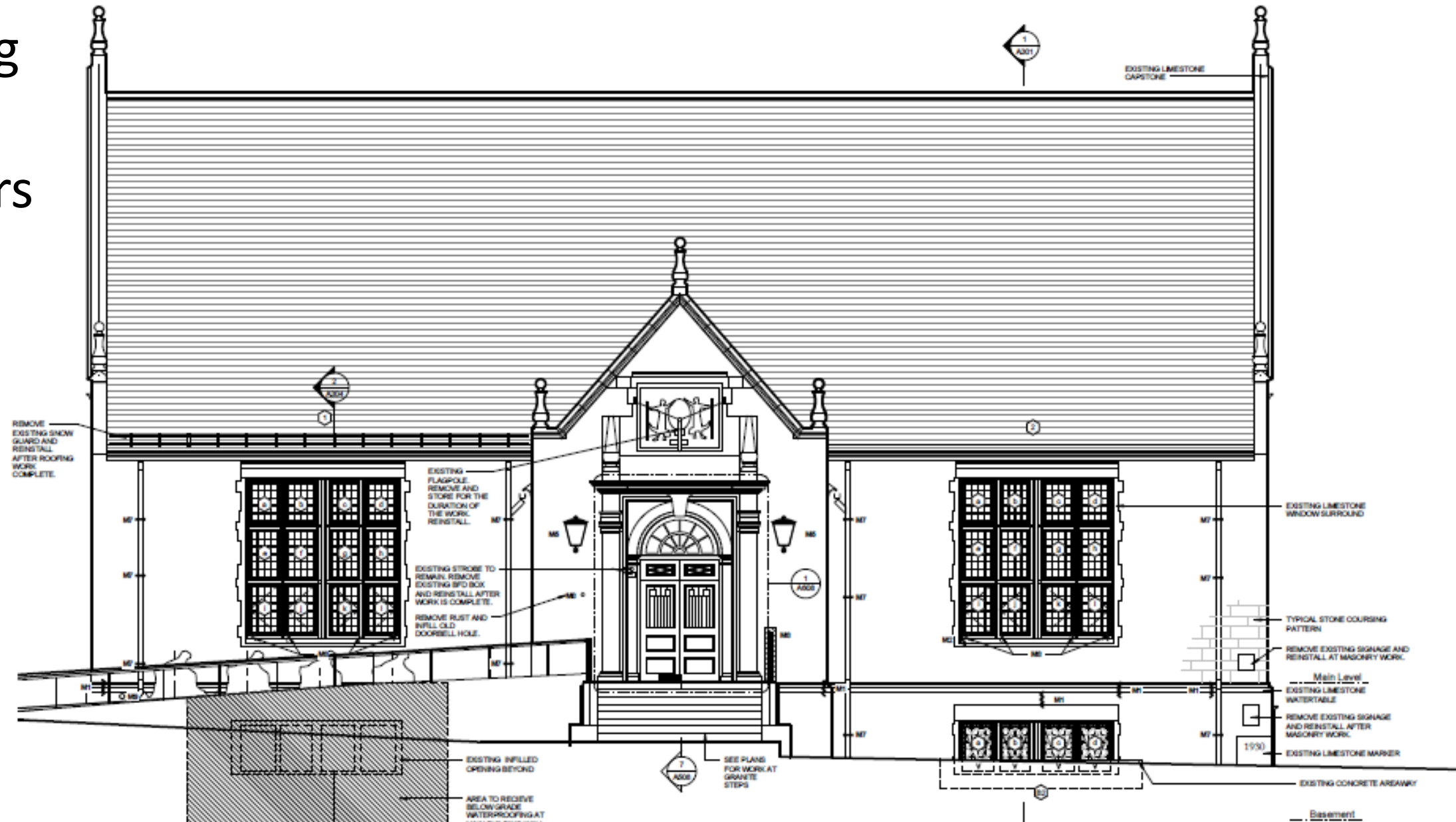
Approved by:	
--------------	--

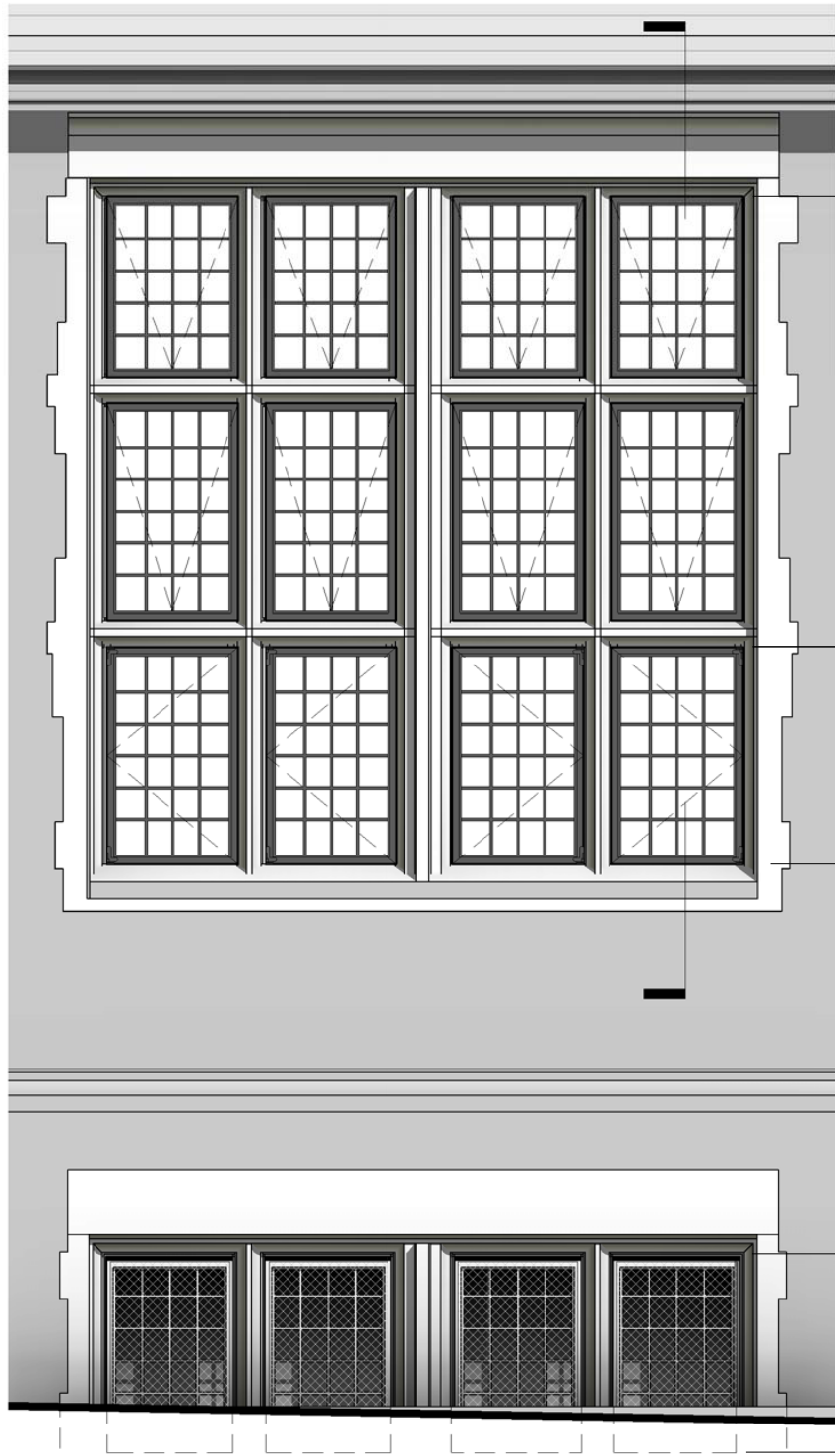
Patched treads and open joints at front steps.
Stone veneer not secured at side wall.



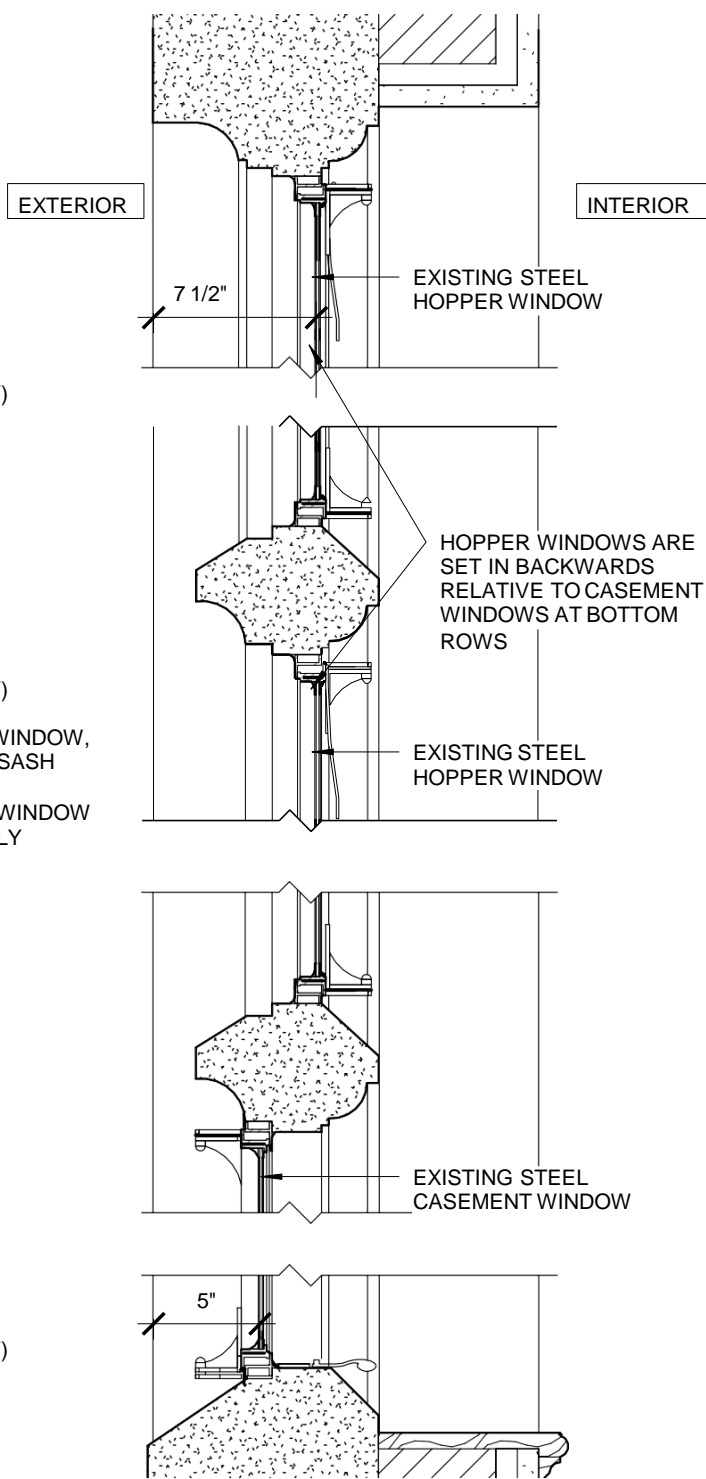
Project Overview

- Window Replacement
- Interior Painting
- Plaster Repair
- Masonry Repairs
- Stair Repair
- Waterproofing

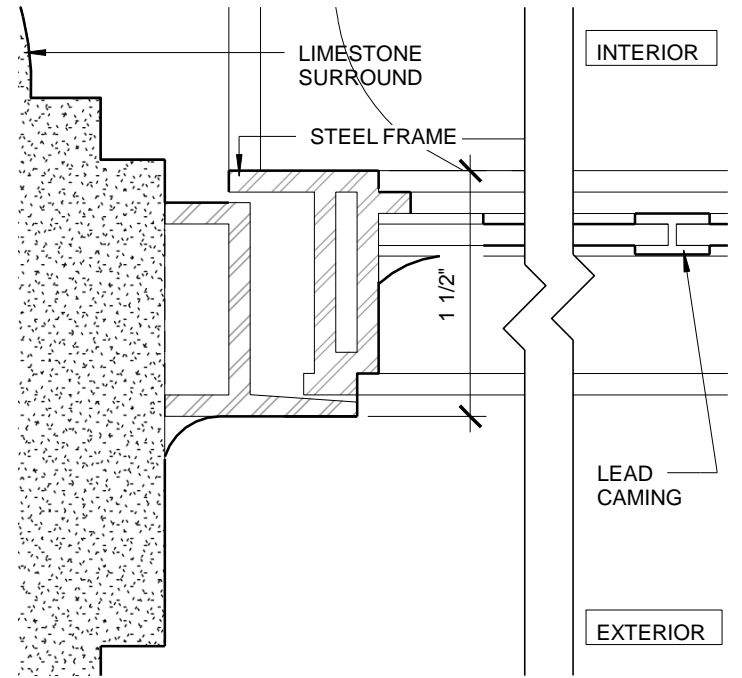




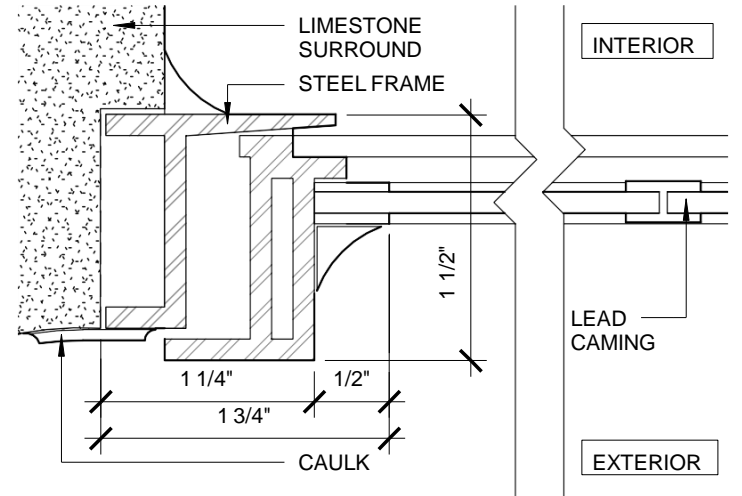
ELEVATION OF EXISTING STEEL WINDOWS
3/8" = 1'-0"



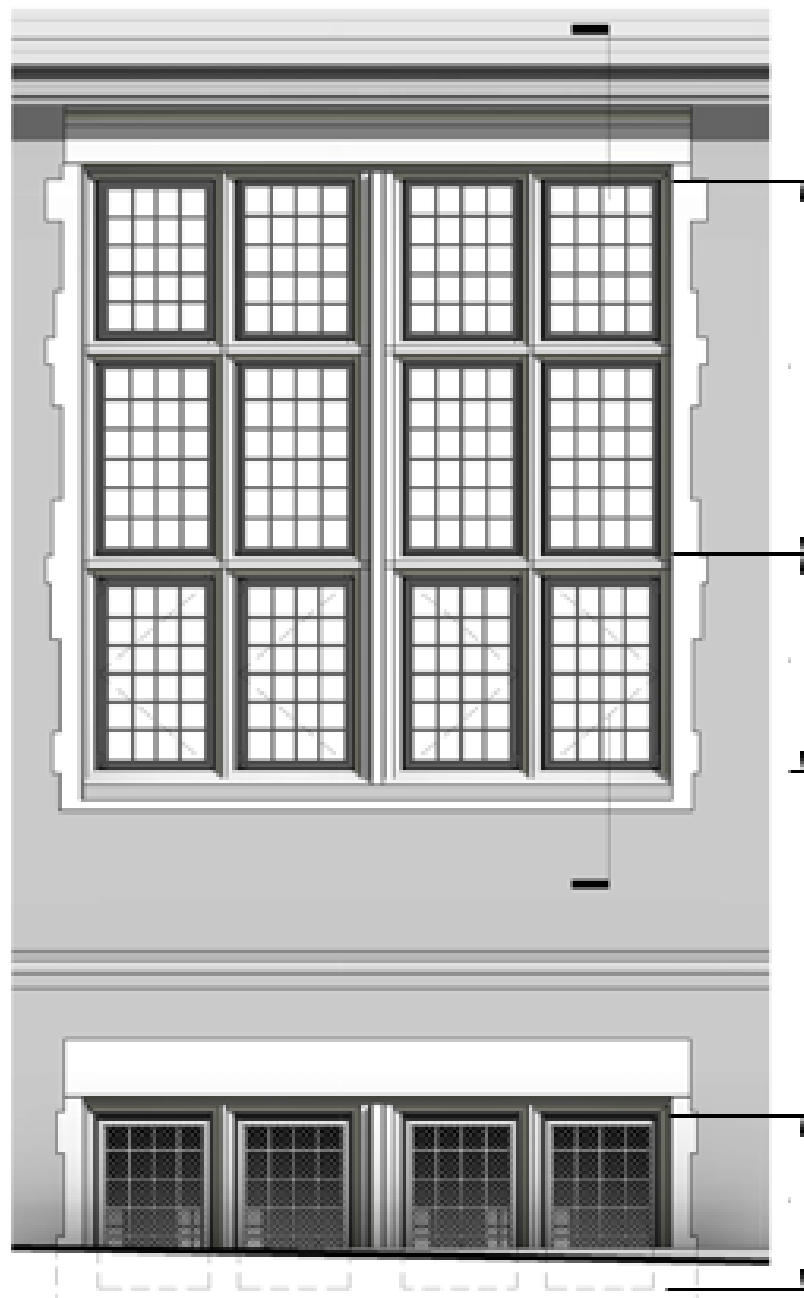
SECTION THROUGH EXISTING STEEL WINDOWS
1 1/2" = 1'-0"



PLAN DETAIL @ OPERABLE HOPPER WINDOW
FULL SCALE



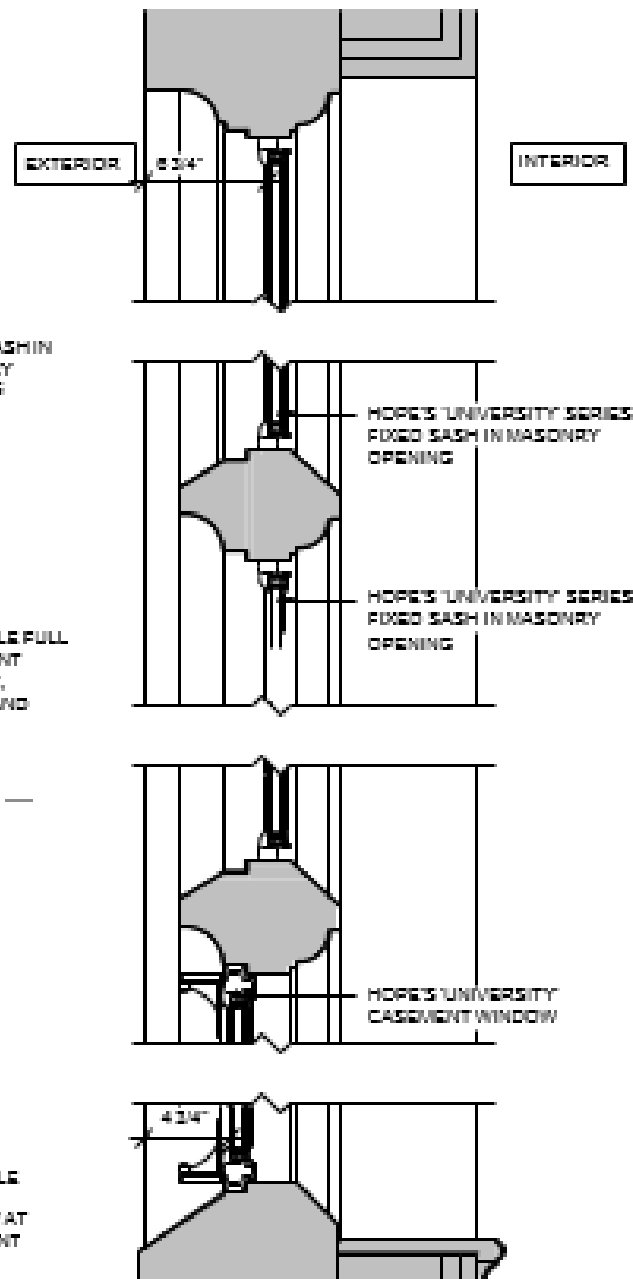
PLAN DETAIL @ OPERABLE CASEMENT WINDOW
FULL SCALE



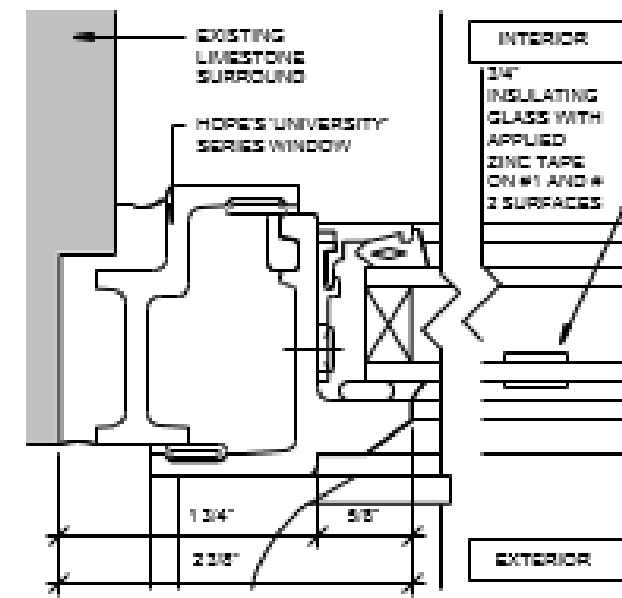
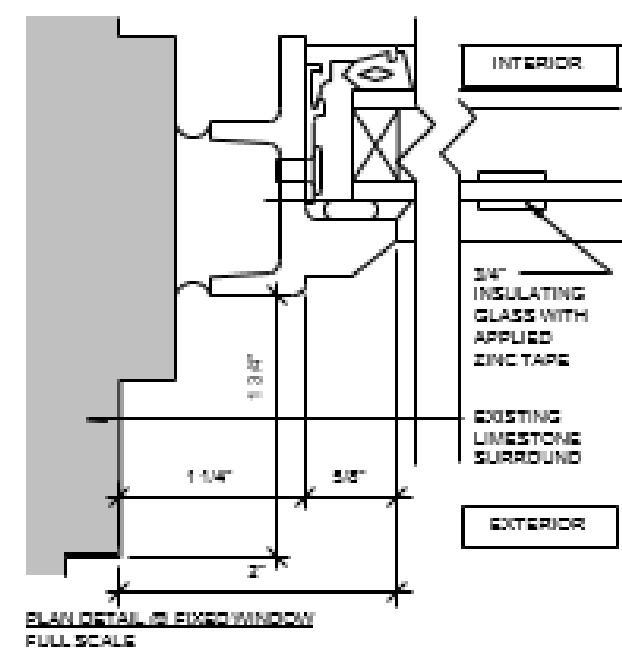
ELEVATION OF HOPE'S 'UNIVERSITY' SERIES REPLACEMENT STEEL WINDOWS
3/8" = 1'-0"

HOPE'S 'UNIVERSITY' SERIES REPLACEMENT STEEL WINDOWS

DECEMBER 07, 2018



SECTION THROUGH HOPE'S 'UNIVERSITY' SERIES REPLACEMENT STEEL WINDOWS
1 1/2" = 1'-0"



PLAN DETAIL OF OPERABLE CASEMENT WINDOW
FULL SCALE

Schedule:

- Bid Release: May 2017
- Bid Award: June 2017
- Close branch/pack up collection: July 2017
- Start construction July 2017
- Complete construction May 2018
- BPL move in May – June 2018
- Open to the public – June 2018



Survey Results:

- Collection (Books)
- Computers/ Printing
- Adult Lectures and Programs
- Museum Pass Pick up
- Homework Help

-



Services:

- Self Pick up of Holds - Roxbury Community College or closest BPL location
- Family Storytime – will be offered weekly
- Homework Help
- Computer Classes – 1 time per month
- Computer Use – Northeastern University – NE Crossing and Tobin Community Center
- Book club
- Bibliocycle
- Museum Passes - Egleston
- Community Outreach



Where to Find Service Updates:

- Facebook
- BPL.org
- Libguide
- Flyers at the branch
- Email distribution list

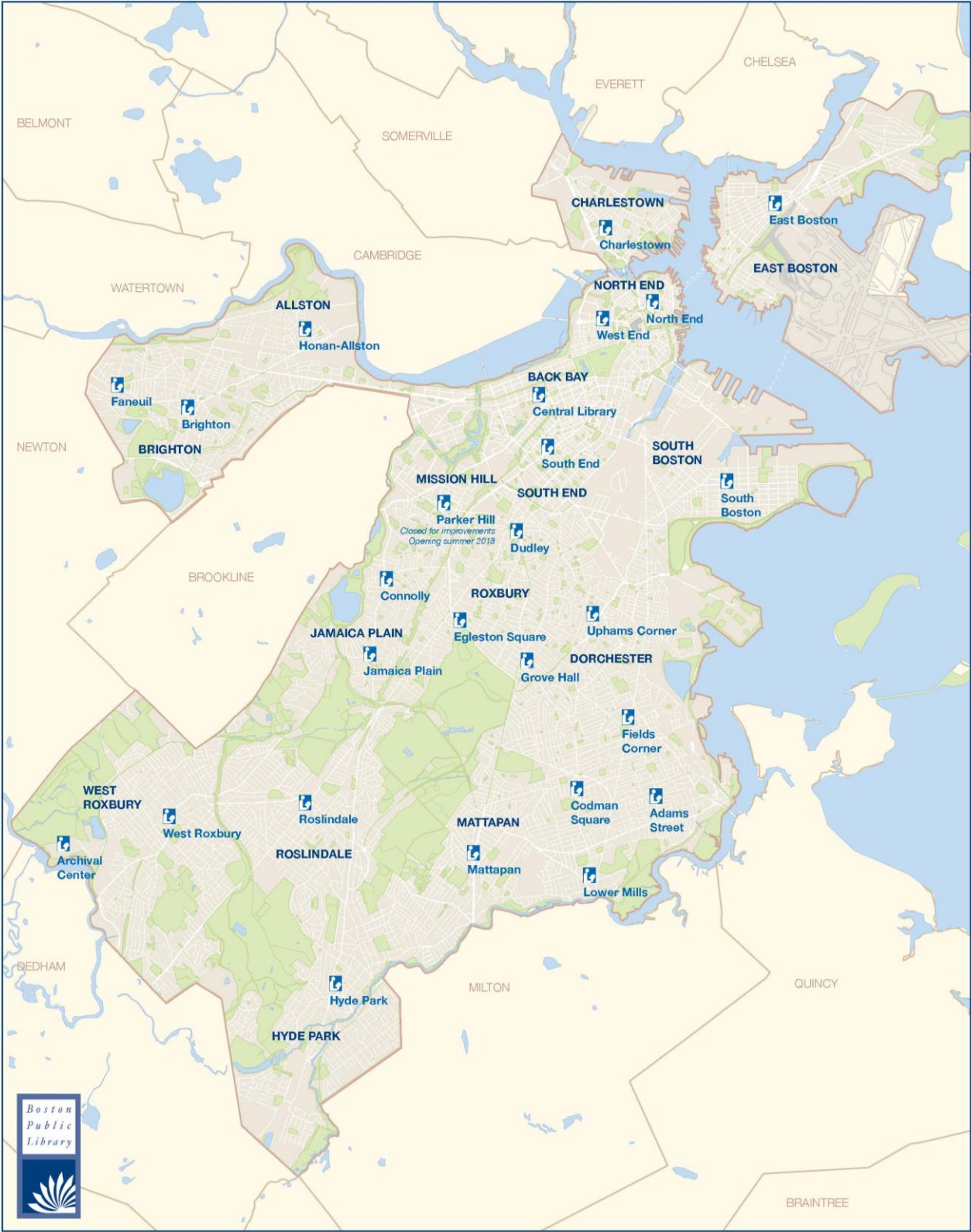


Community Resources:

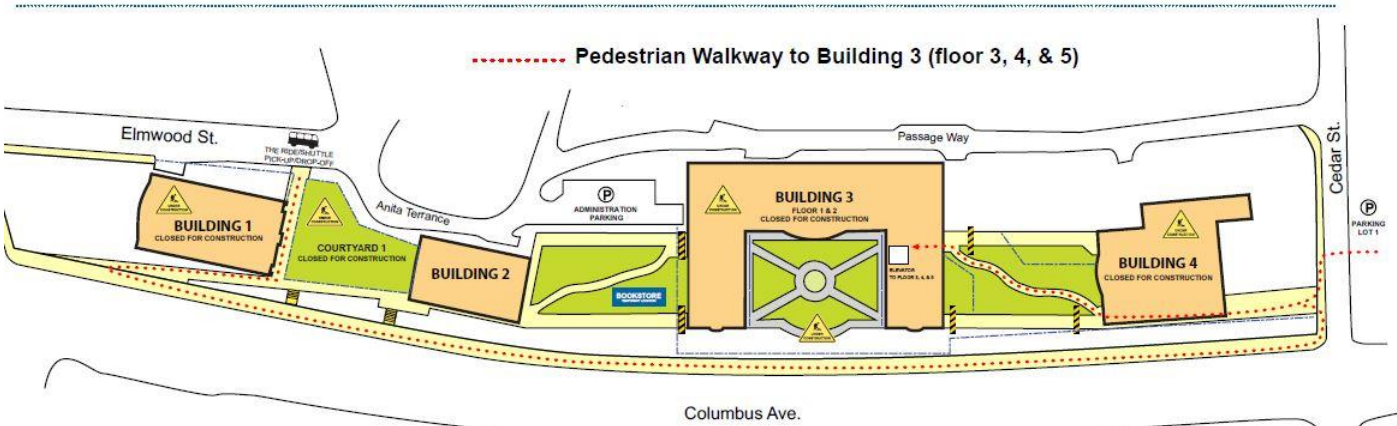
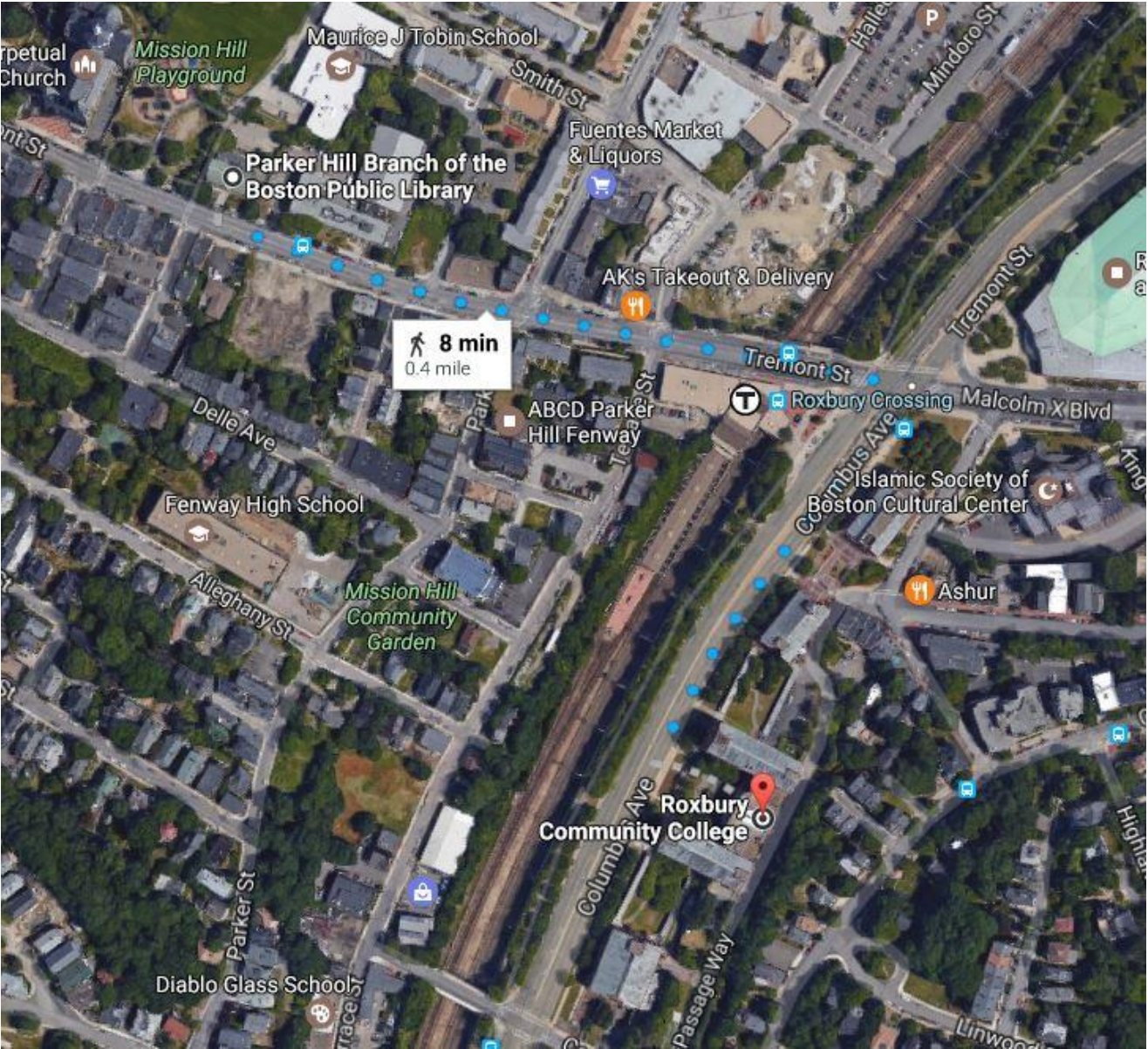
- All BPL locations
- Tobin Community Center
- Mission Hill Health Movement
- Roxbury Community College
- Reggie Lewis Center
- Partners Health Shuttle



BPL Branches

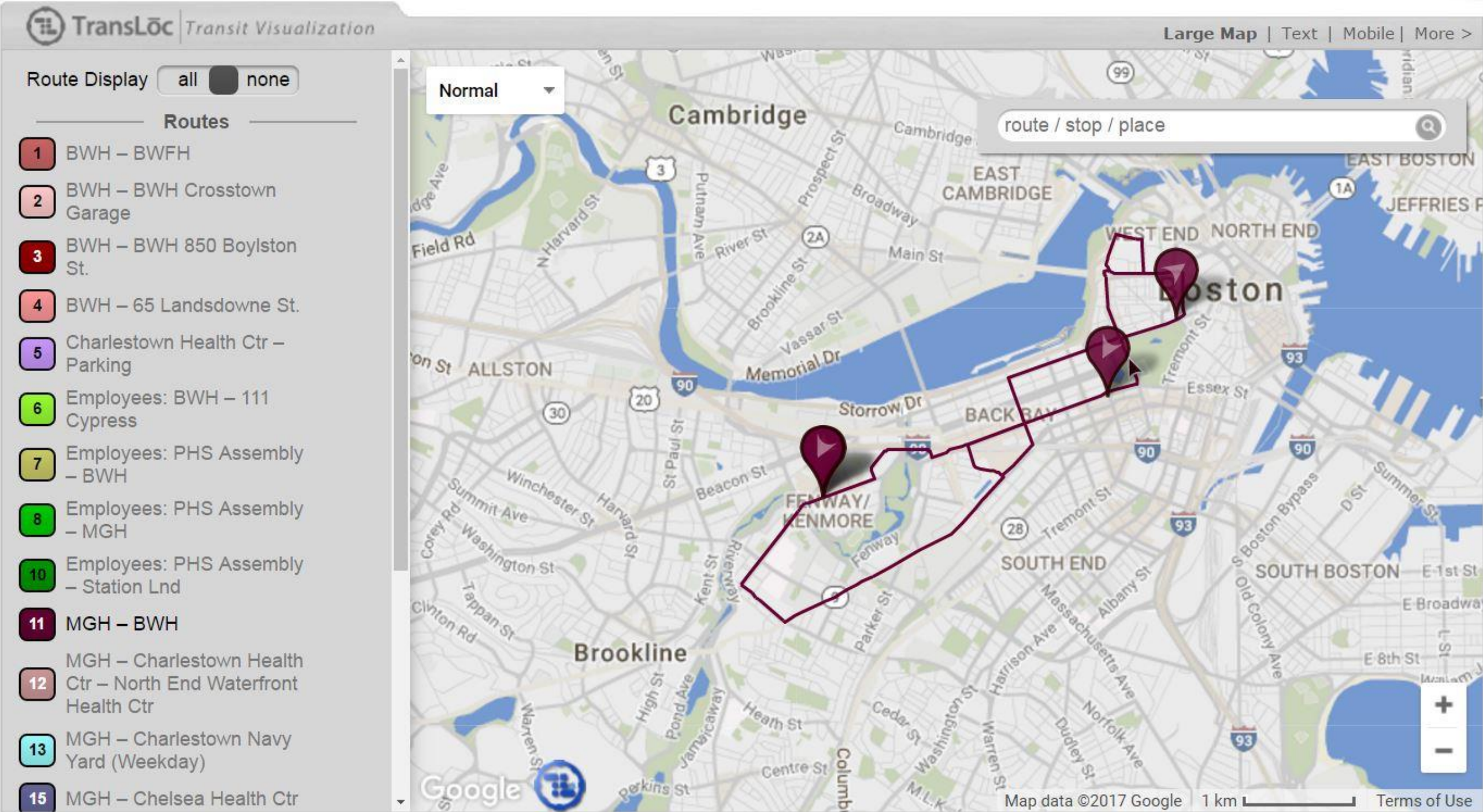


Roxbury Community College Library



Partners Healthcare Shuttle

Shuttle Map



Questions?

