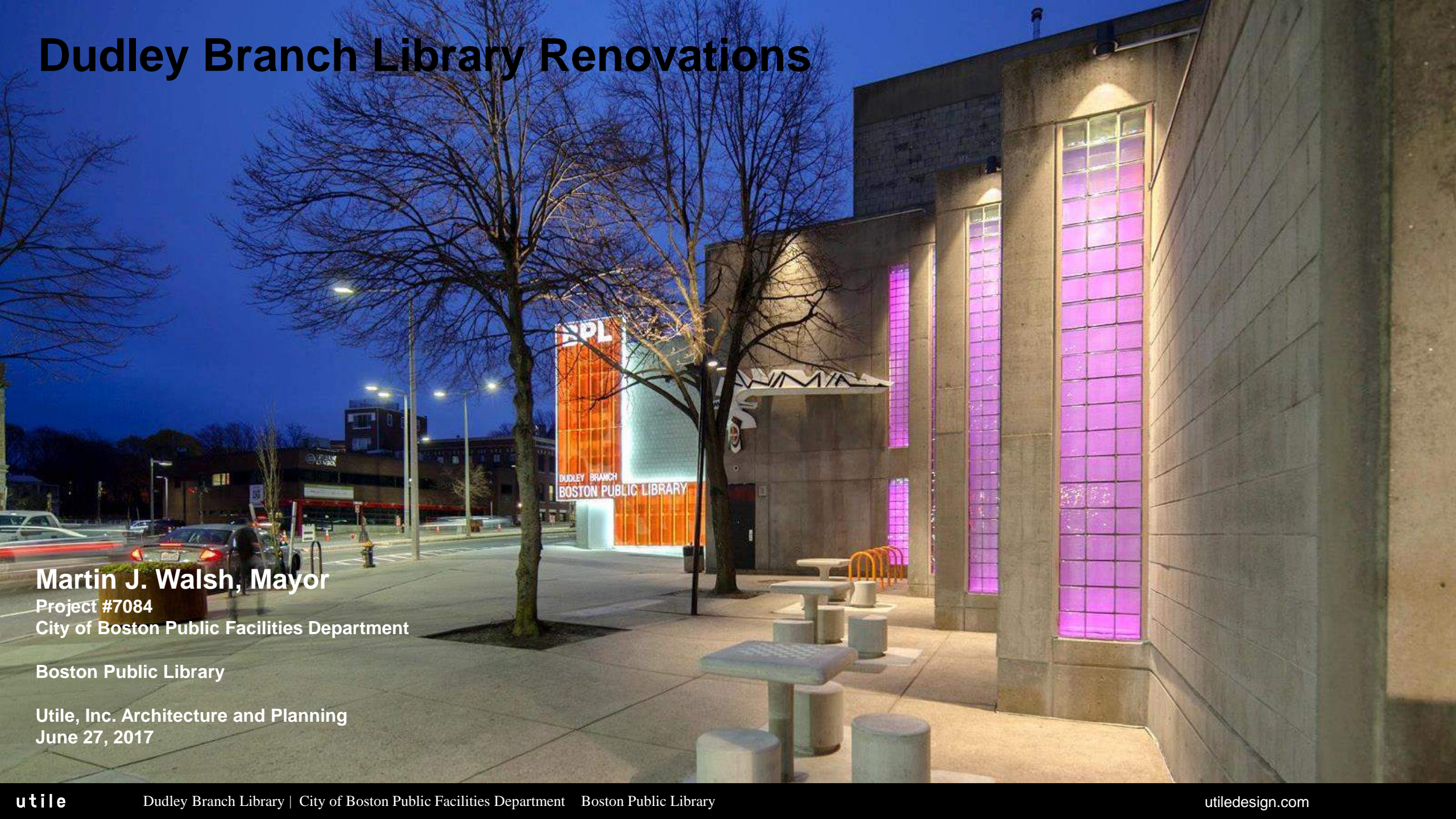


# Dudley Branch Library Renovations



**Martin J. Walsh, Mayor**

Project #7084

City of Boston Public Facilities Department

Boston Public Library

Utile, Inc. Architecture and Planning

June 27, 2017

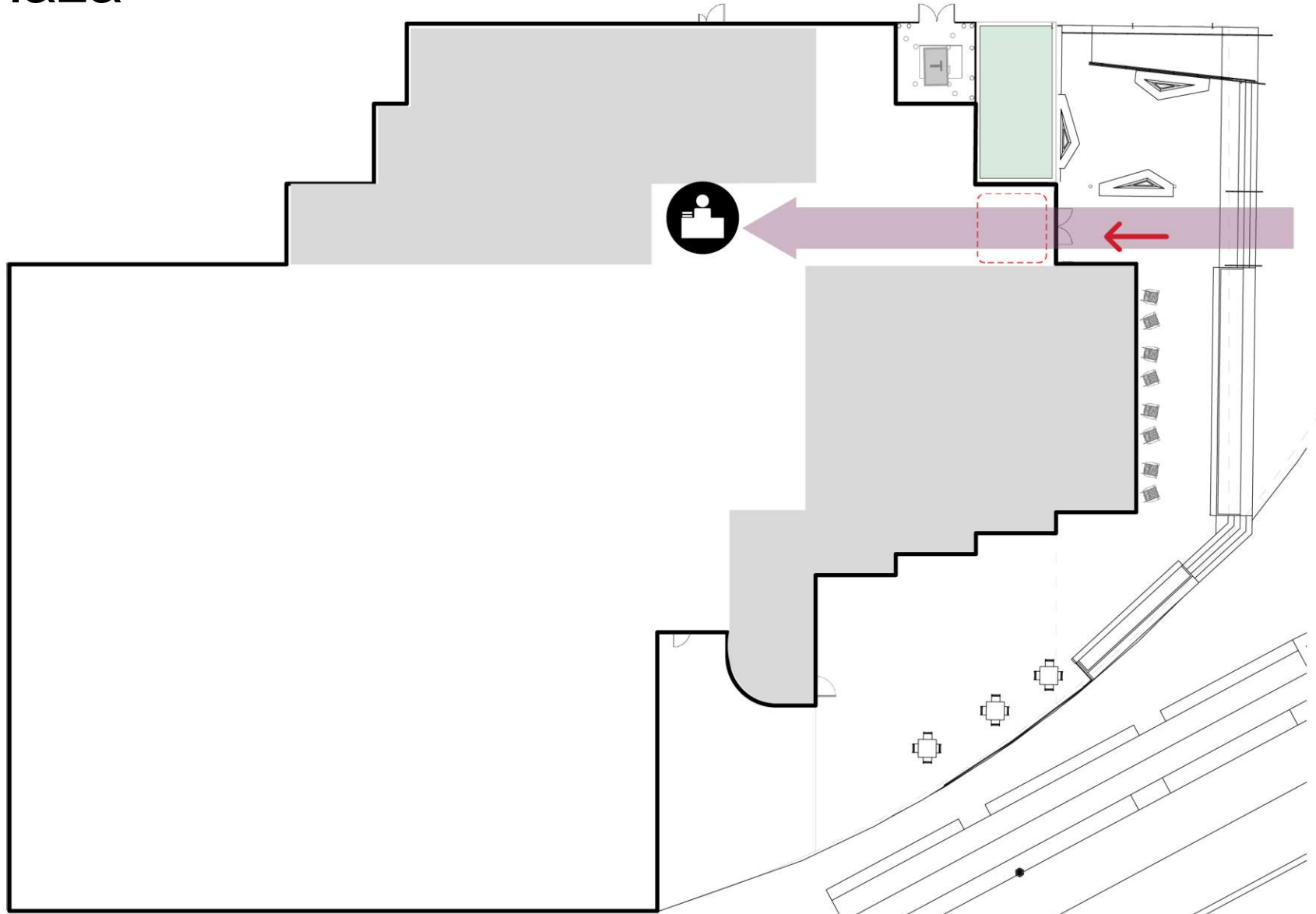
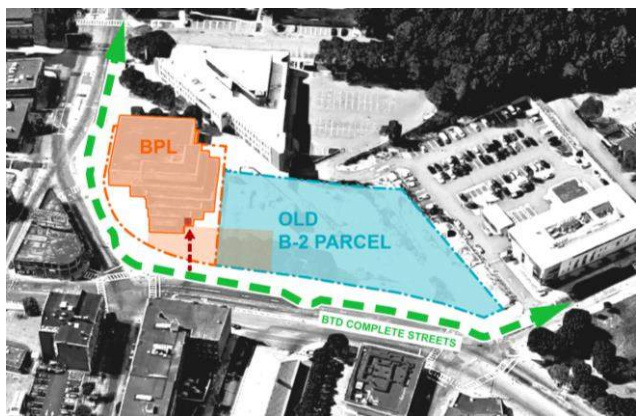
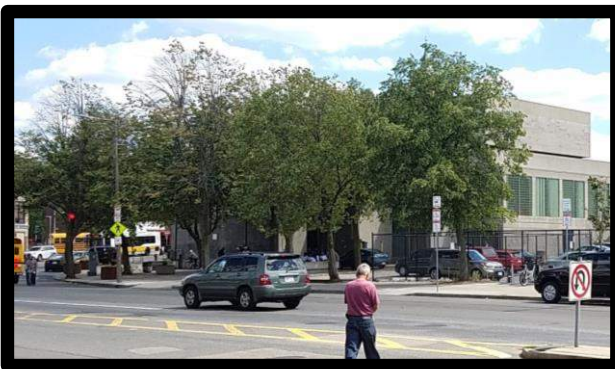
# Agenda

- Organizational Strategies and Interior Design
- Library Exterior Design
- Recap of Previous Meeting
- Site Design Approach



# Orient Entrance to Plaza

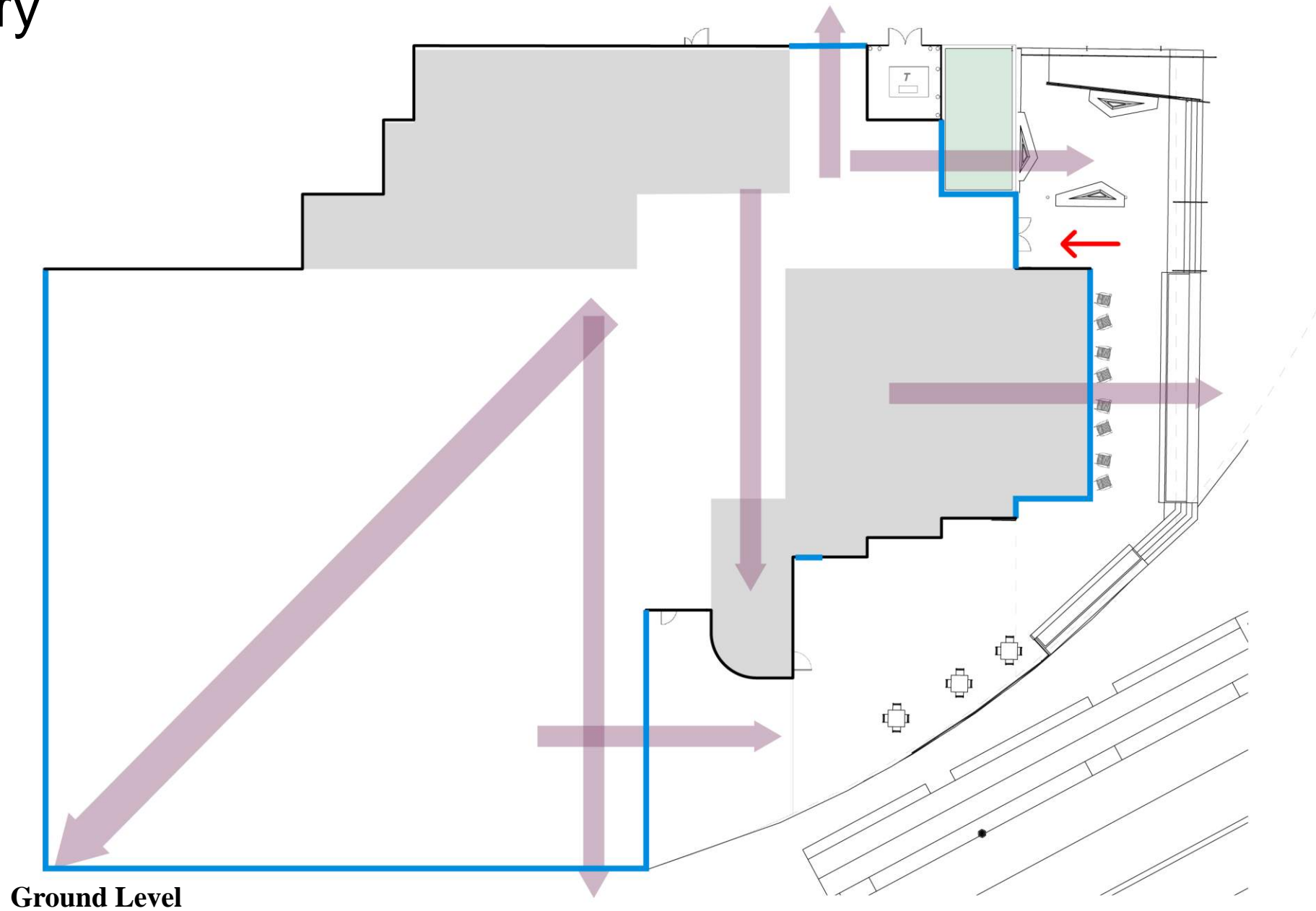
- **Entrance:** Orient location of entrance to enhance civic presence and create welcoming arrival.



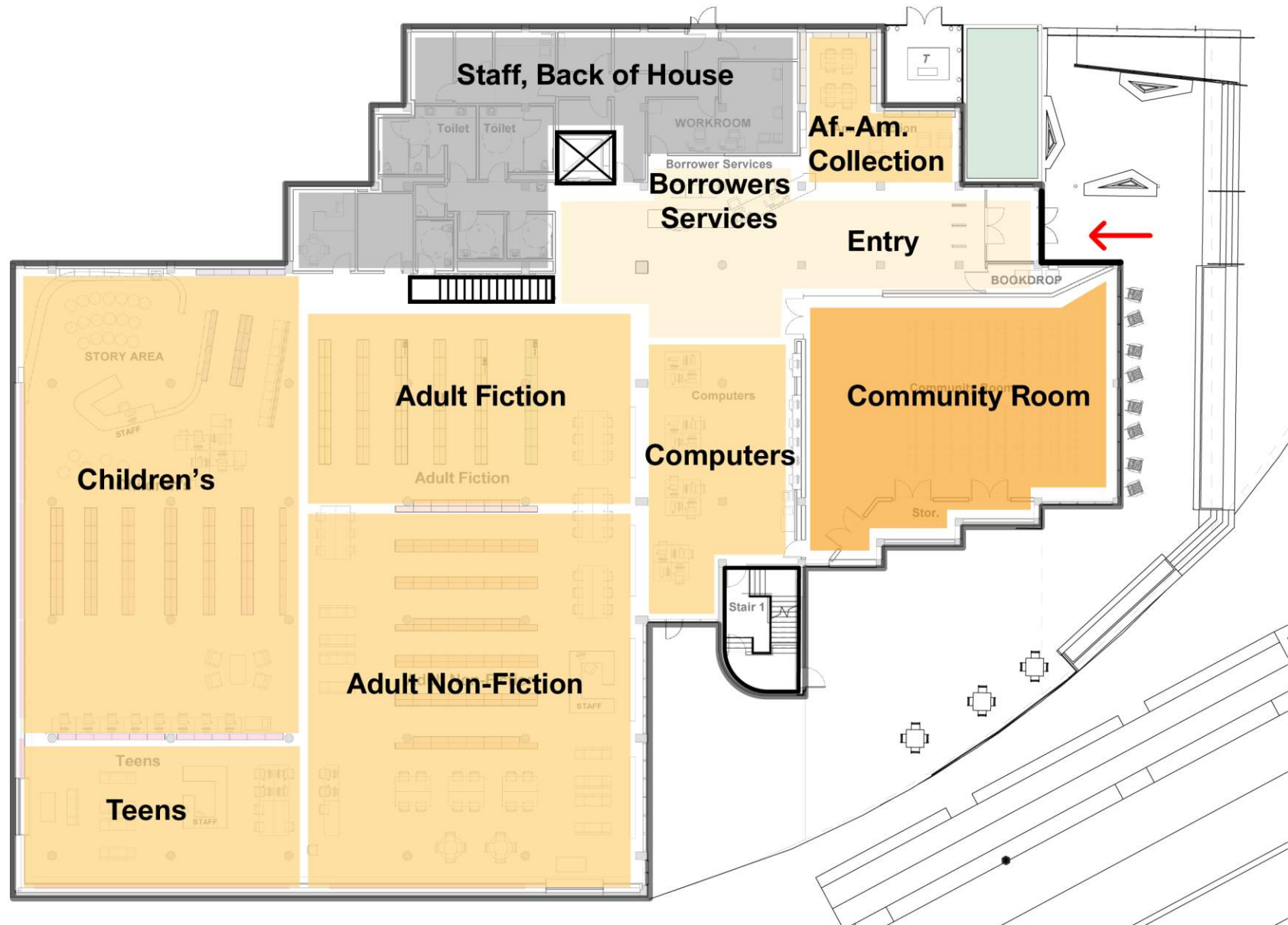
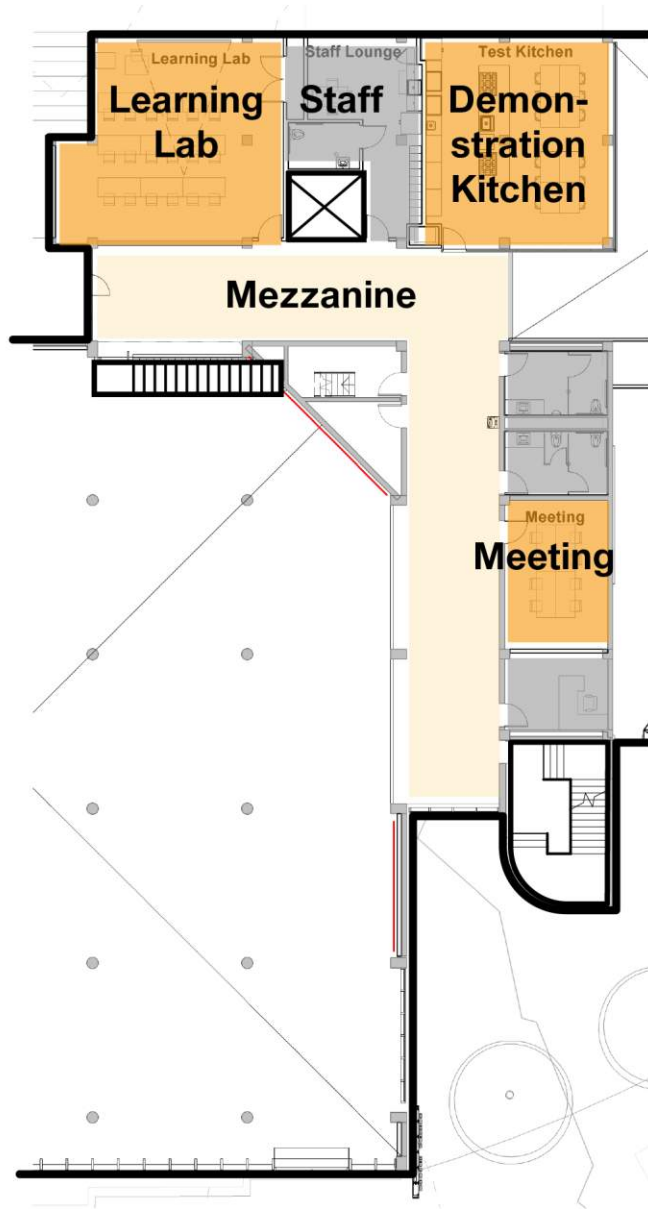
Ground Level

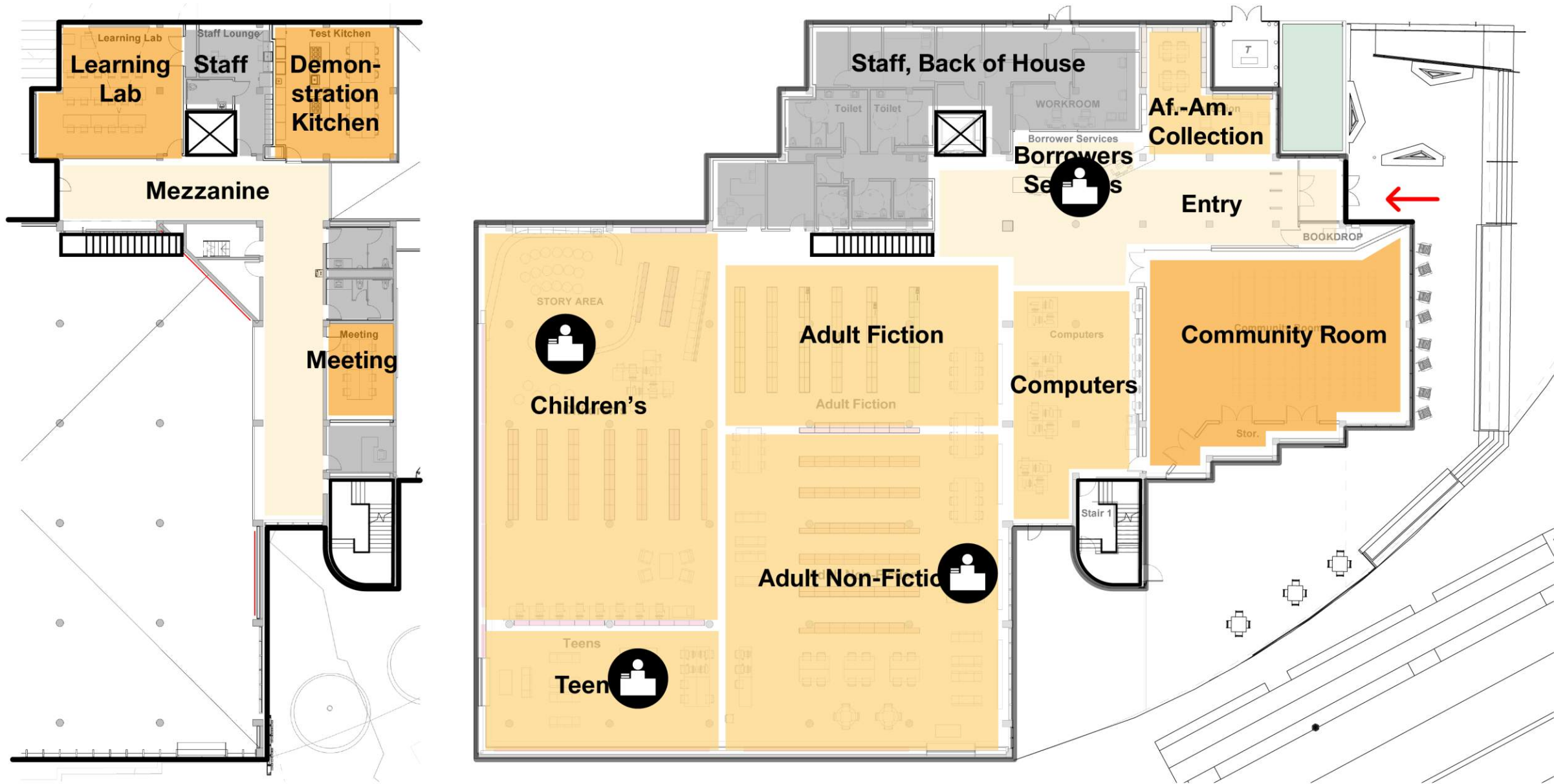
# Open Up the Library

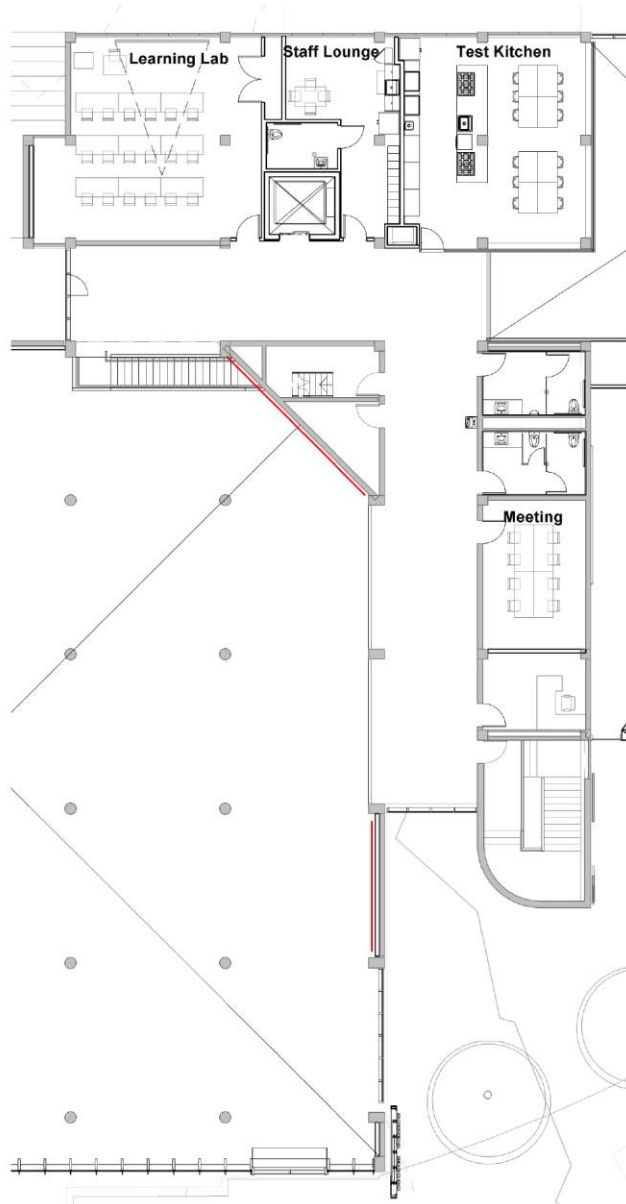
- **Openness:** Enhance visibility between the library and the surroundings.
- **Organizing Views:** Consider key views to help organize main library space.
- **Sight Lines:** Open up the interior to improve sight lines, between patrons and staff.



Ground Level





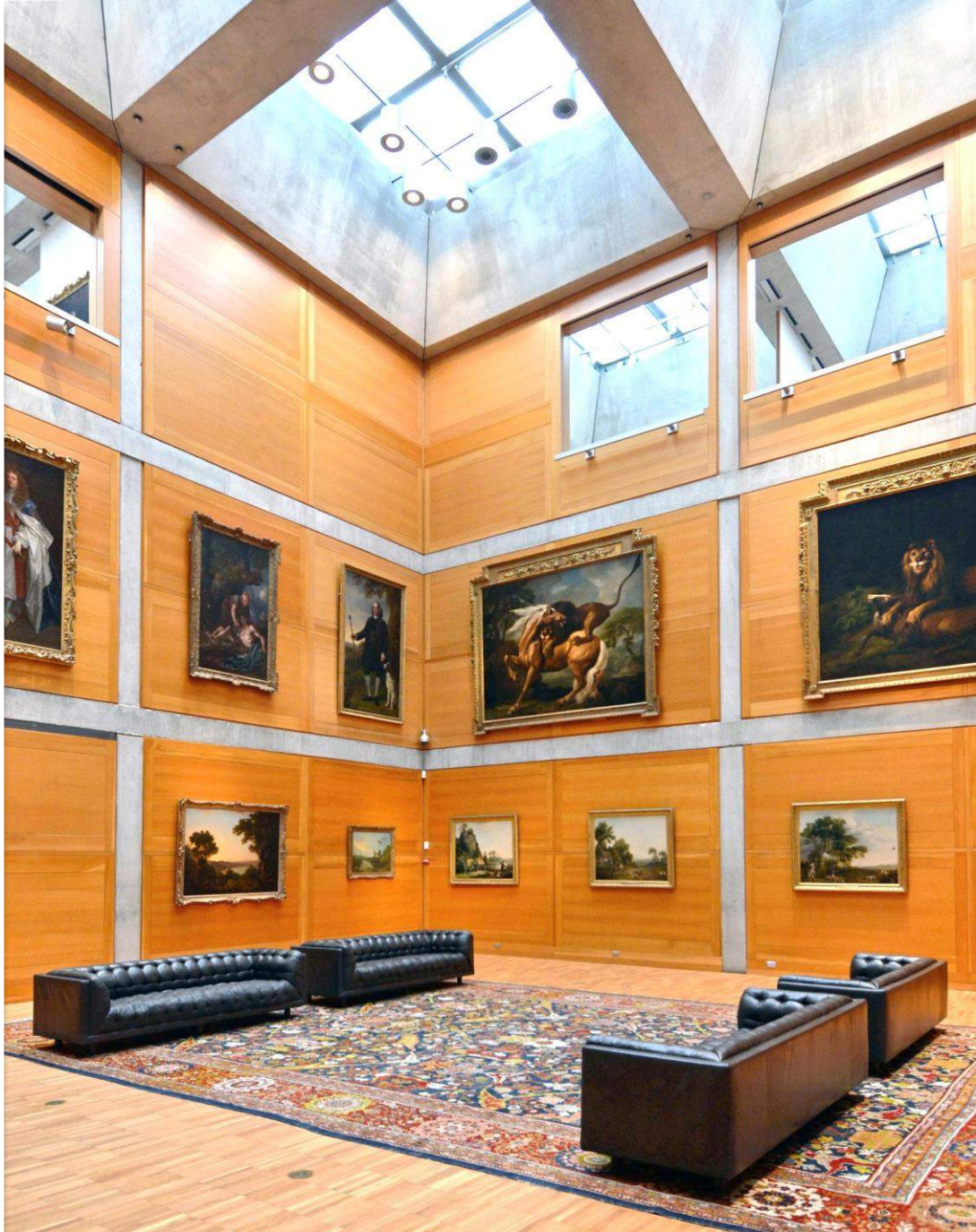


**Mezzanine Level**



**Ground Level**

# Humanizing the Concrete





# Existing Arrival to Library



# Celebrating the Arrival











adult  
adult  
adult  
adult  
adult  
adult  
ADULT  
ult  
ult  
Adult

Kids

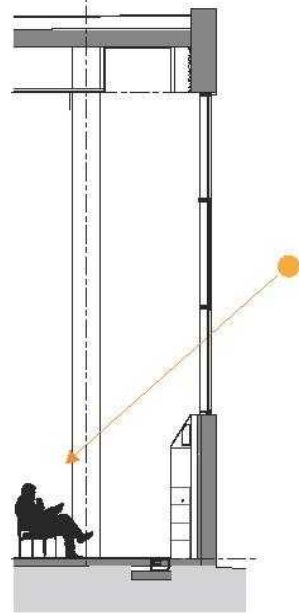
Teen  
TEEN  
Teen  
TEEN  
Teen  
teen  
Teen  
TEEN  
Teen  
Teen

# Glare Analysis

12/21 10 am

**Baseline**

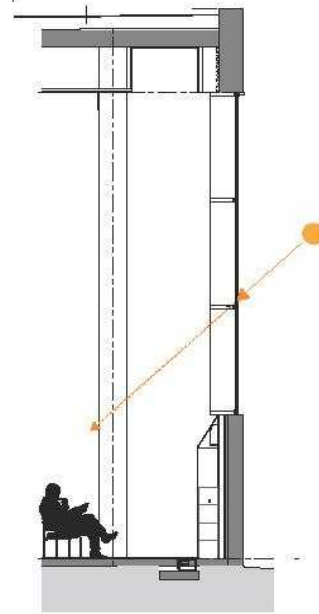
7.5" deep mullion



Glare Probability: 100%

**01**

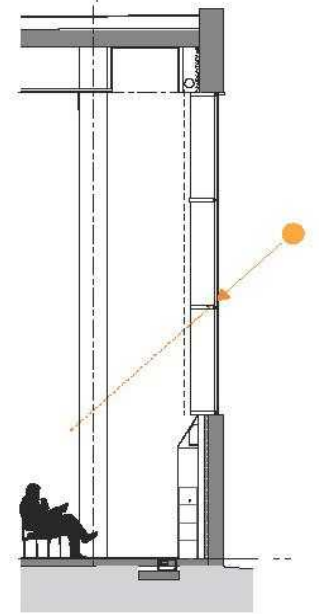
19" deep glulam mullion



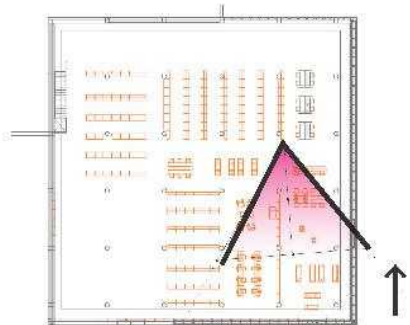
28%

**02**

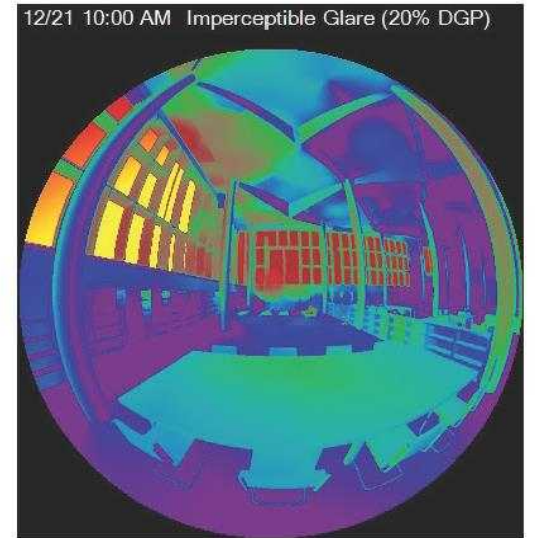
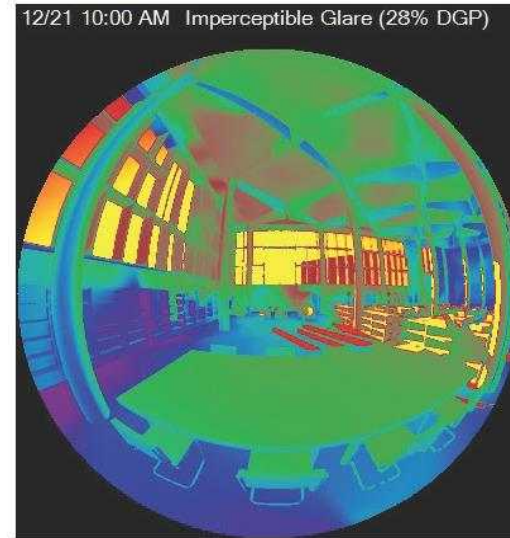
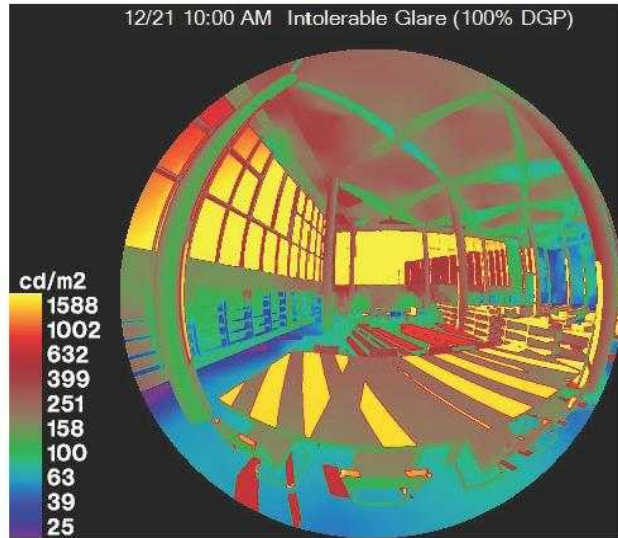
Fabric shade (south only)



20%



Plan and camera view









# Feedback from May 9<sup>th</sup> CAC Meeting

- “Enhance the presence and scale of entrance design.”
- “Consider how plaza spaces will be used by library patrons and community.”
- “Improve accessibility to the entrance as part of development of ramp and stair design.”
- “Enhance scope of plantings as part of the landscape improvements.”
- “Affirm the role of Art in the library and coordinate schedule with city efforts.”
- “Continue coordinate with BTDC Complete Streets work.”
- “Develop strategies for continuing library services while branch is closed for construction.”



Image from May 9<sup>th</sup> CAC Meeting

# Entrance



# Coordination with Area Initiatives

Roxbury Municipal Court

Dudley Branch  
BPL

## **BPDA Plan Dudley:**

Planning Process that includes creating RFP for development of Old B2 Site

ENTRY

## **BTD Complete Streets Project:**

Streetscape redesign process that includes grading, planting and lighting coordination with the Library.



# Access and Accessible Routes

Roxbury Municipal Court

Dudley Branch  
BPL

Warren Street

Dudley Street

Accessible, at-grade path from Warren Street

Accessible paths from Dudley Street with ramp

Accessible drop-off parking space



# Outdoor Uses

Roxbury Municipal Court

Dudley Branch  
BPL

**Reader's Terrace:**  
Library Oriented  
Programming

**Lower Plaza:**  
Community Oriented  
Programming



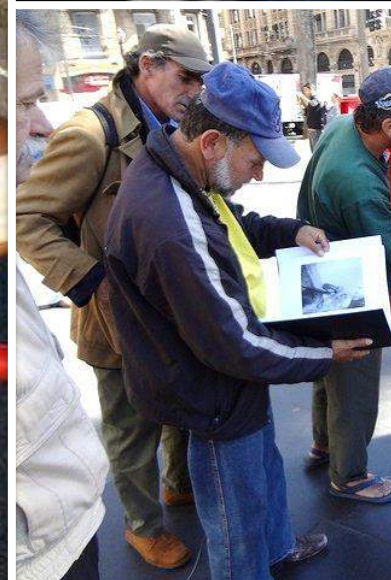
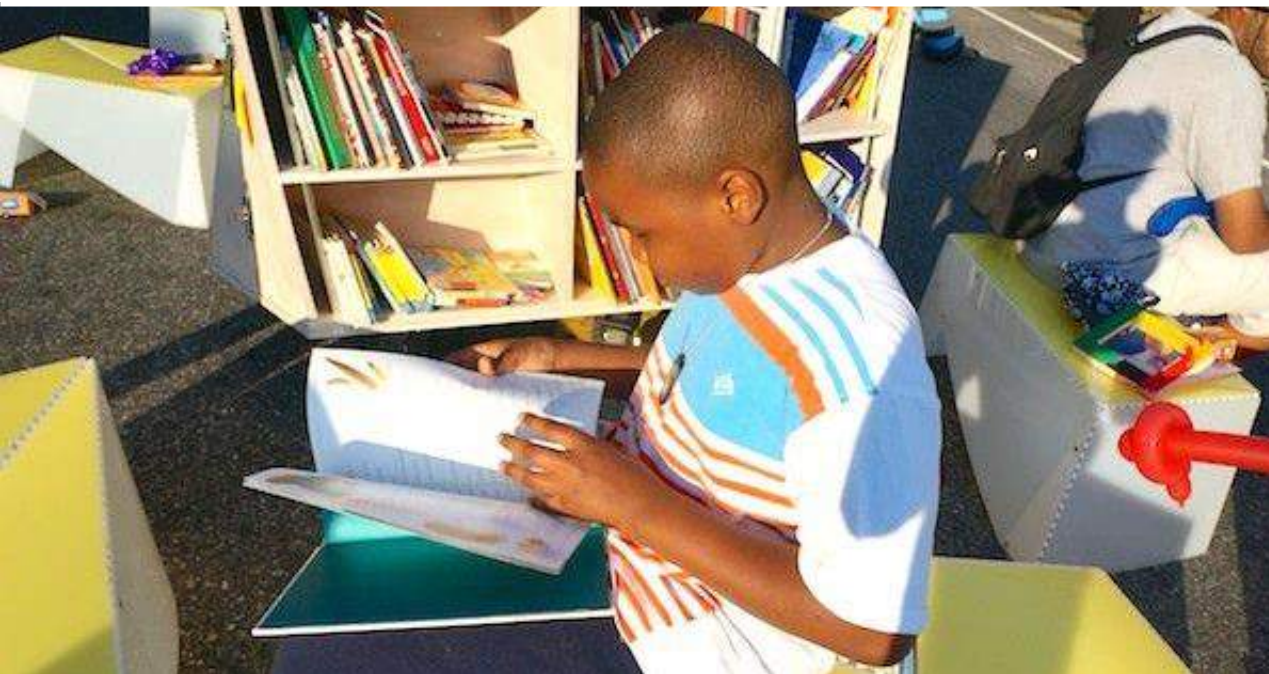
# Reader's Terrace



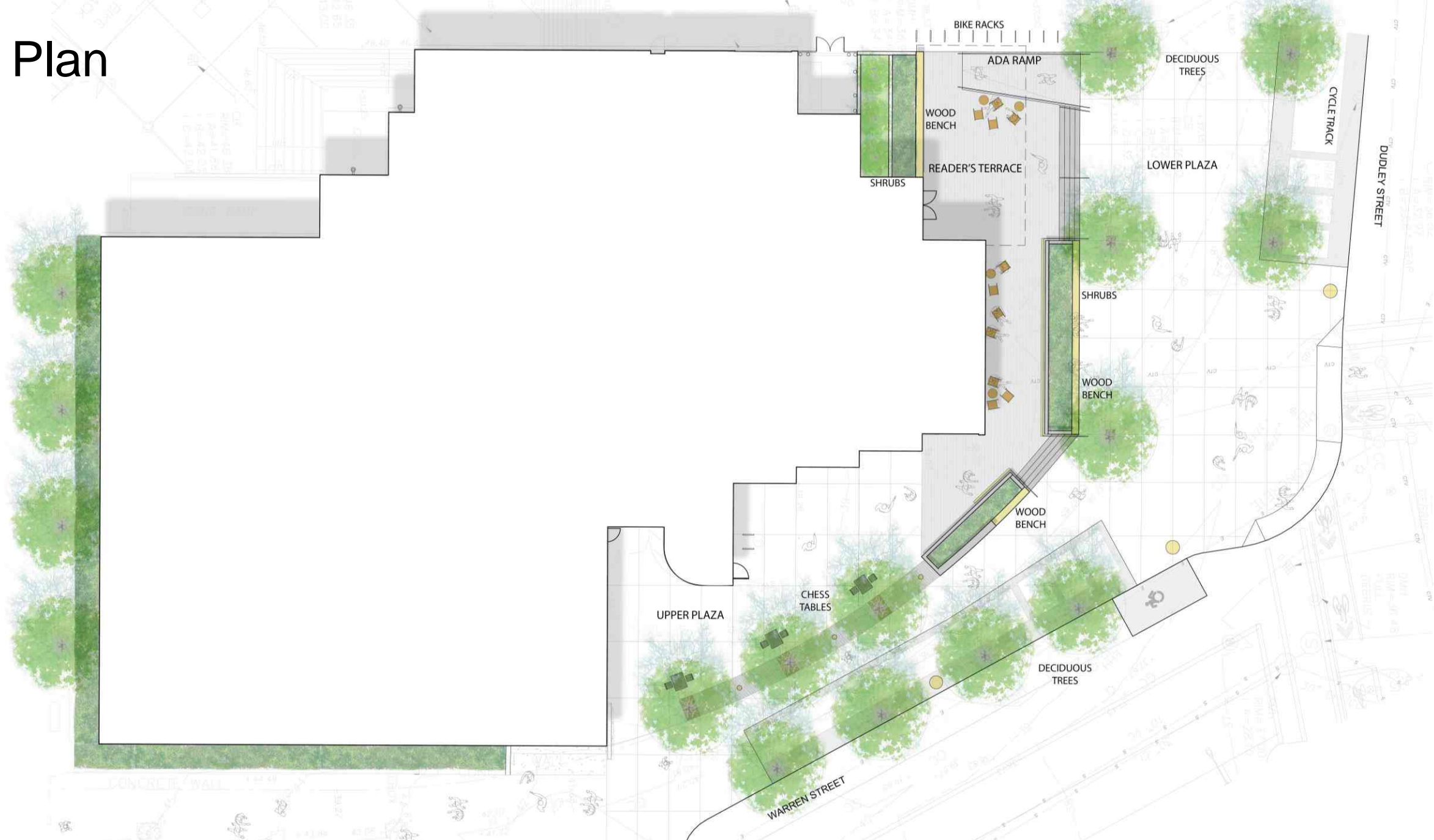




# Reader's Terrace



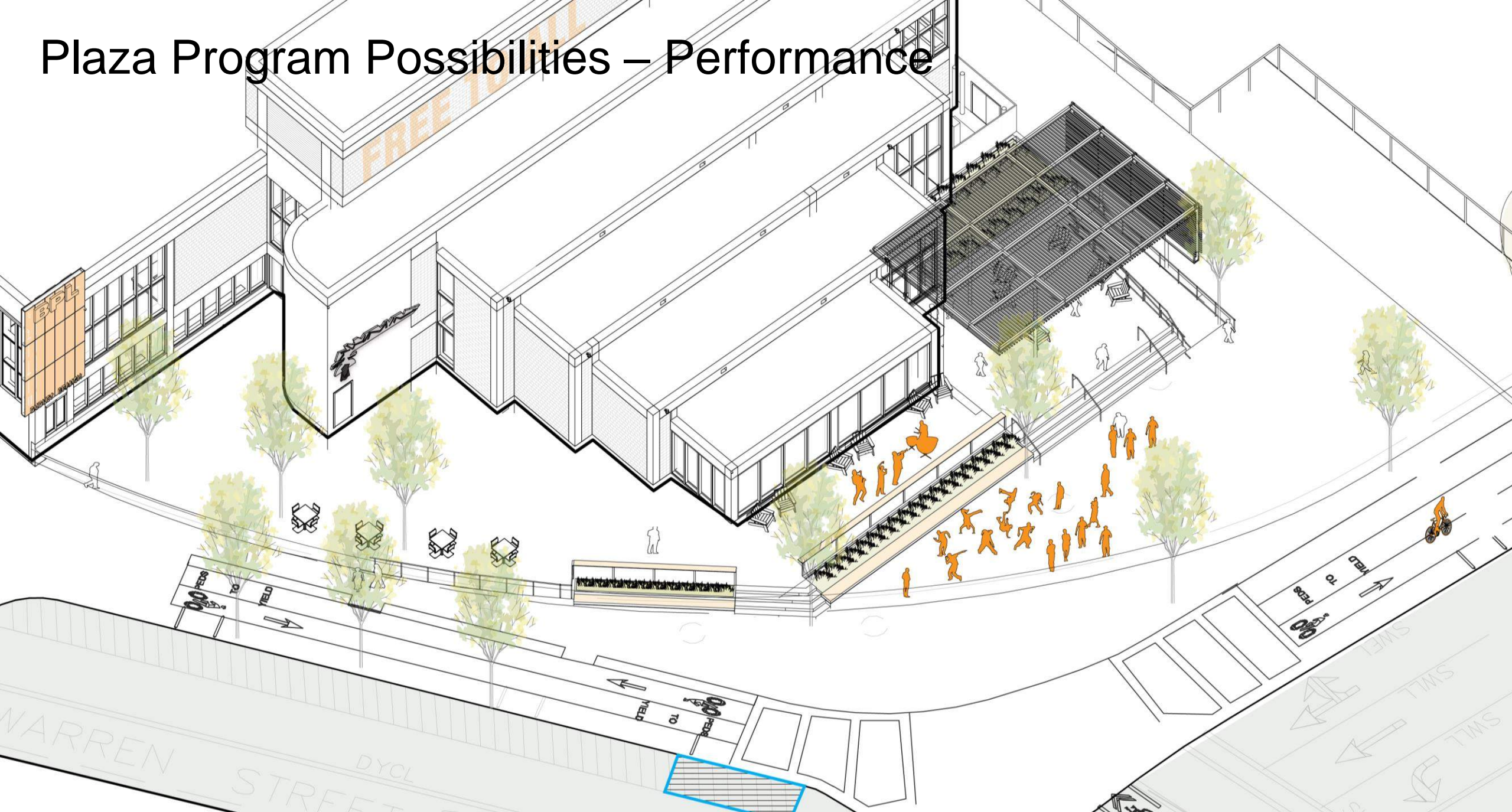
# Site Plan



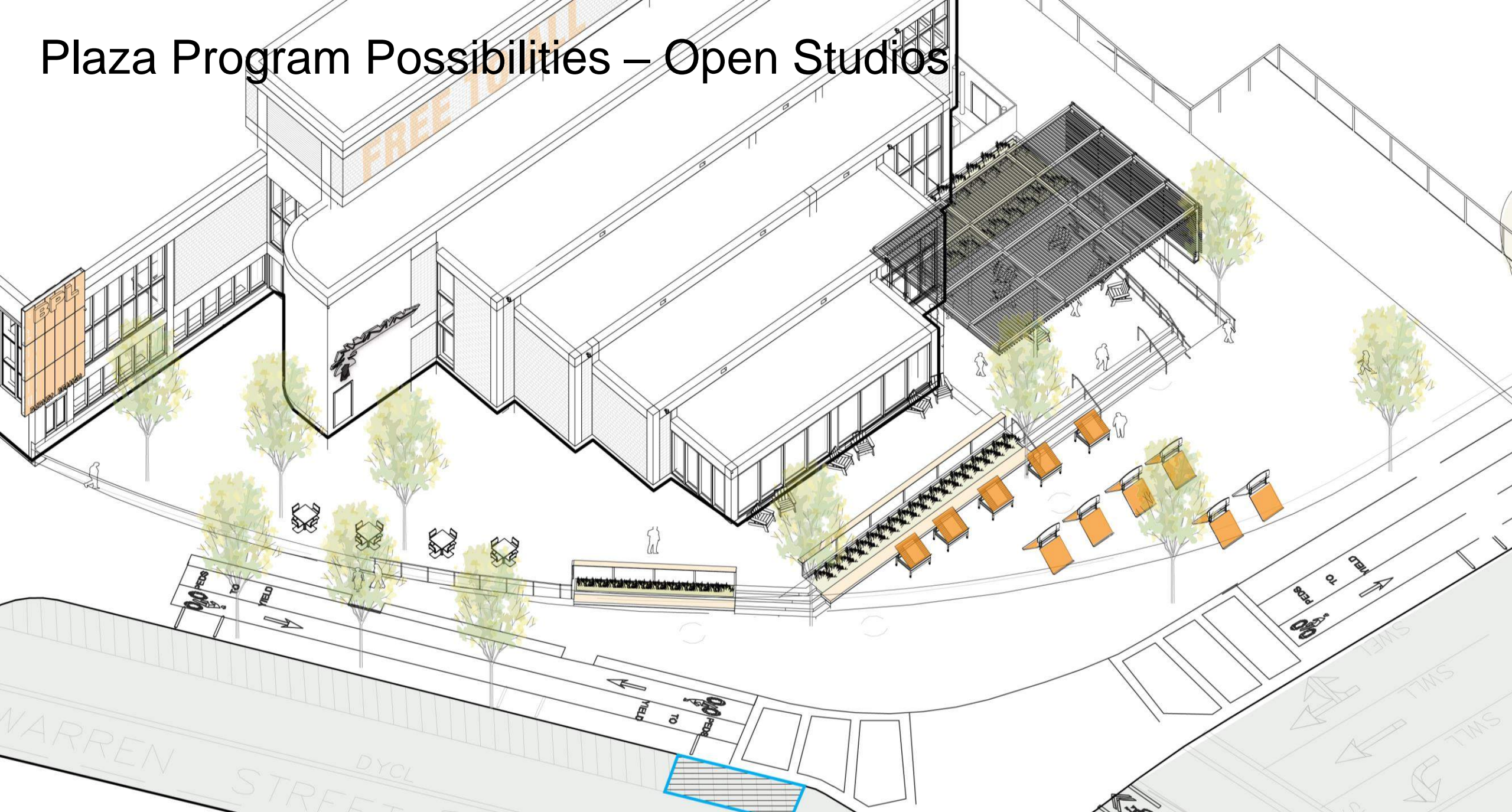
# Plaza Program Possibilities – Farmers Market



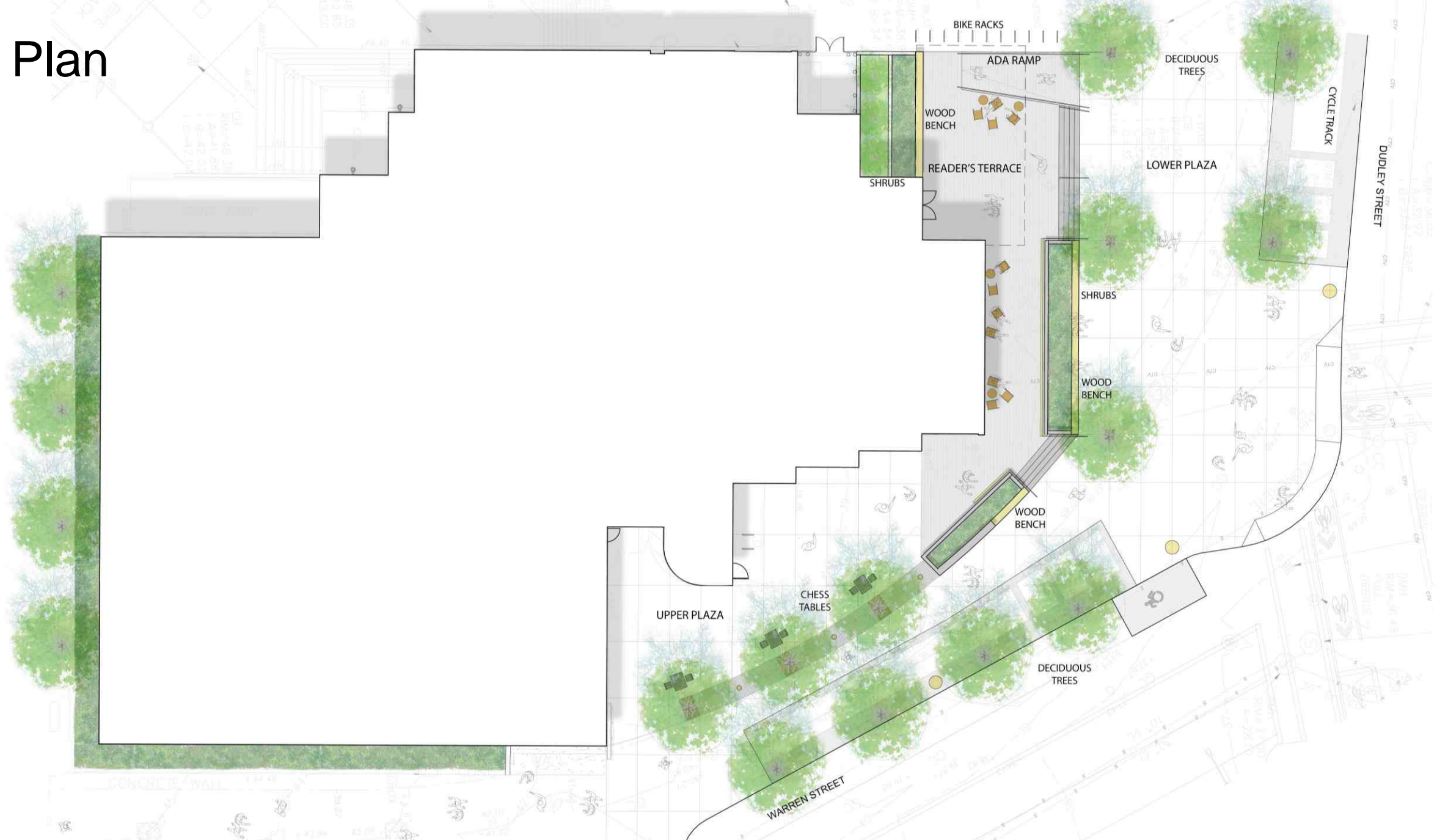
# Plaza Program Possibilities – Performance



# Plaza Program Possibilities – Open Studios



# Site Plan



# Thank You