



# ROSLINDALE BRANCH, BPL

COMMUNITY PRESENTATION #1

MARTIN J. WALSH, MAYOR

CITY OF BOSTON PUBLIC FACILITIES DEPARTMENT

10/17/2017



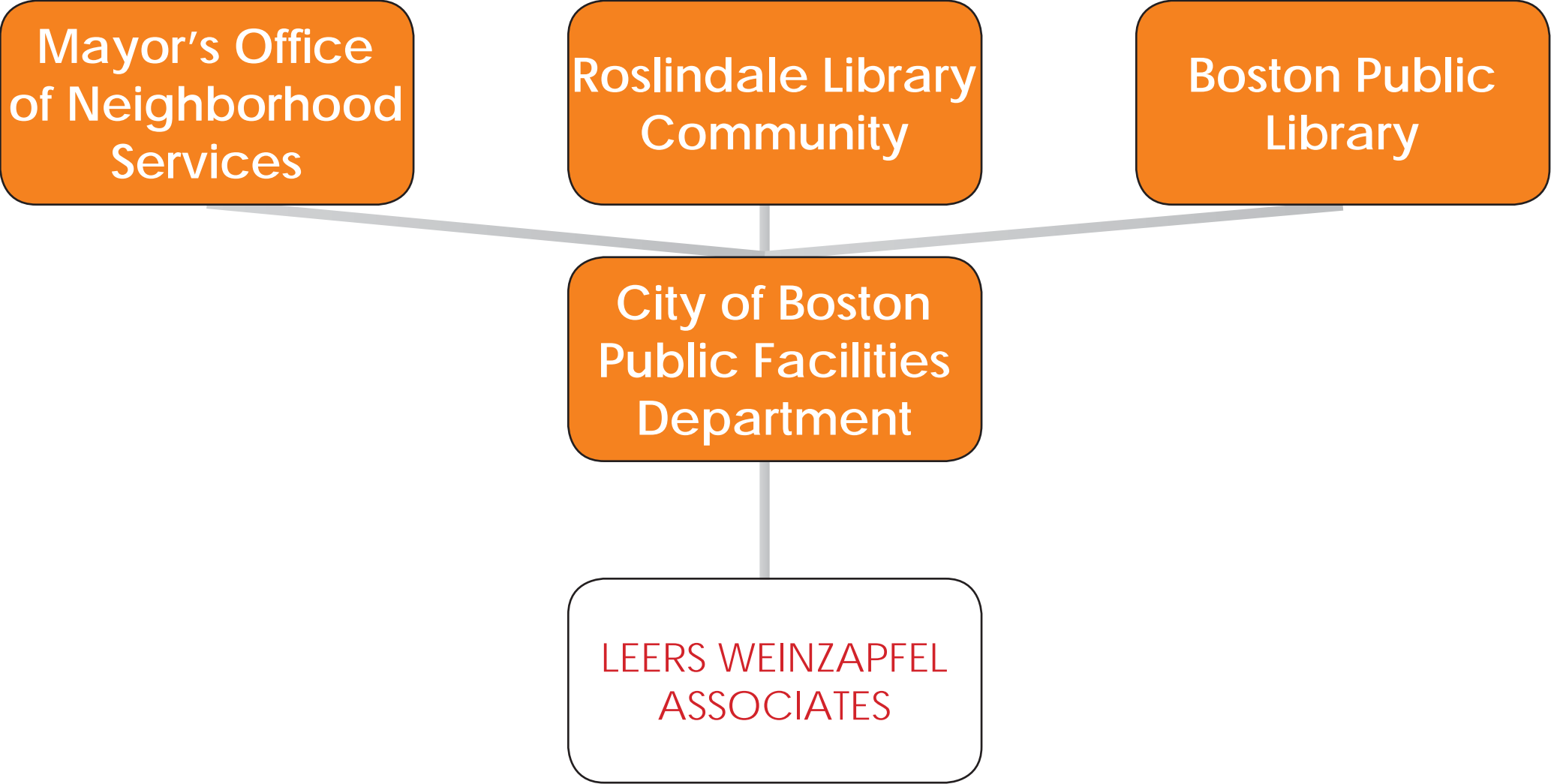
**BOSTON**  
PUBLIC LIBRARY

# MEETING AGENDA

- **WHO** : INTRODUCTIONS
- **WHAT**: RECAP OF CURRENT LIBRARY SITE
- **HOW**: PRIORITIES FOR DESIGN & INITIAL DESIGN STUDIES
- **DISCUSSION**: COMMUNITY FEEDBACK

# WHO

# The Team



- National AIA Firm Award
- Ranked in ARCHITECT Magazine's Top 50 Firms, 2015 & 2016
- Over 85 National & Regional Design Awards
- Over 100 National & International Publications











# WHAT

# GENERAL COMMENTS

- The library is a much loved and important community resource
- The library needs a welcoming and highly visible entrance
- The library needs lots of flexible space, well lit, and good acoustics

# BPL PROGRAM ELEMENTS

- ADA accessible entrance
- Efficient circulation station
- Self check-out and self pick-up areas
- Children's room with early literacy nook
- Teen space
- Adult space
- Technology in all age groups - lots of outlets, strategic placement of copy machine and printer
- Multipurpose room
- Staff work room/break room/office
- Staff access points in public area
- Updated furniture, fixtures, flooring, paint
- New restrooms
- Signage: exterior, interior directional, and collections
- Updated mechanical, electrical, plumbing and fire protection systems
- Security - cameras, card access, and improved sight lines

# ADDITIONAL UPGRADES

- Clean basement space
- New entrance canopy
- New ramp and vestibule
- New book drop
- New finishes, equipment, circulation desk, furniture, shelving, signage, and ceilings at first floor
- Sustainable lighting fixtures
- Professional landscape design
- New recycling, trash, and equipment storage

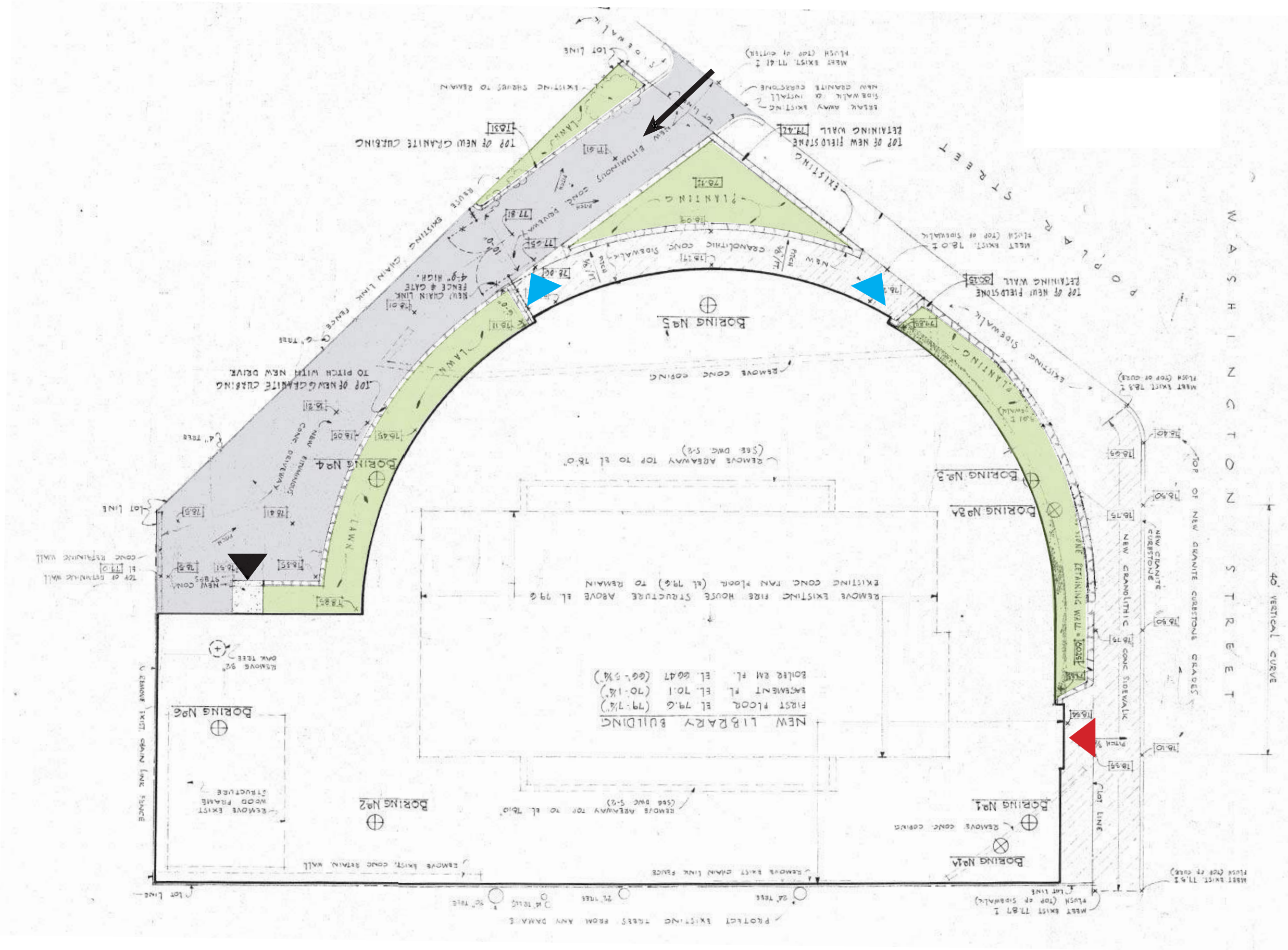


ROSLINDALE BRANCH - BOSTON PUBLIC LIBRARY

Isidor Richmond & Carney Goldberg, Architects







- ▲ MAIN ENTRY
- ▲ EGRESS ONLY
- ▲ SERVICE ENTRY
- ← VEHICLE ENTRY



# EXTERIOR AREA

- Visible & accessible entry needed
- Desire for public landscaped areas
- Clear, organized back/ service area



## EXISTING CONDITIONS



## OPEN AREA

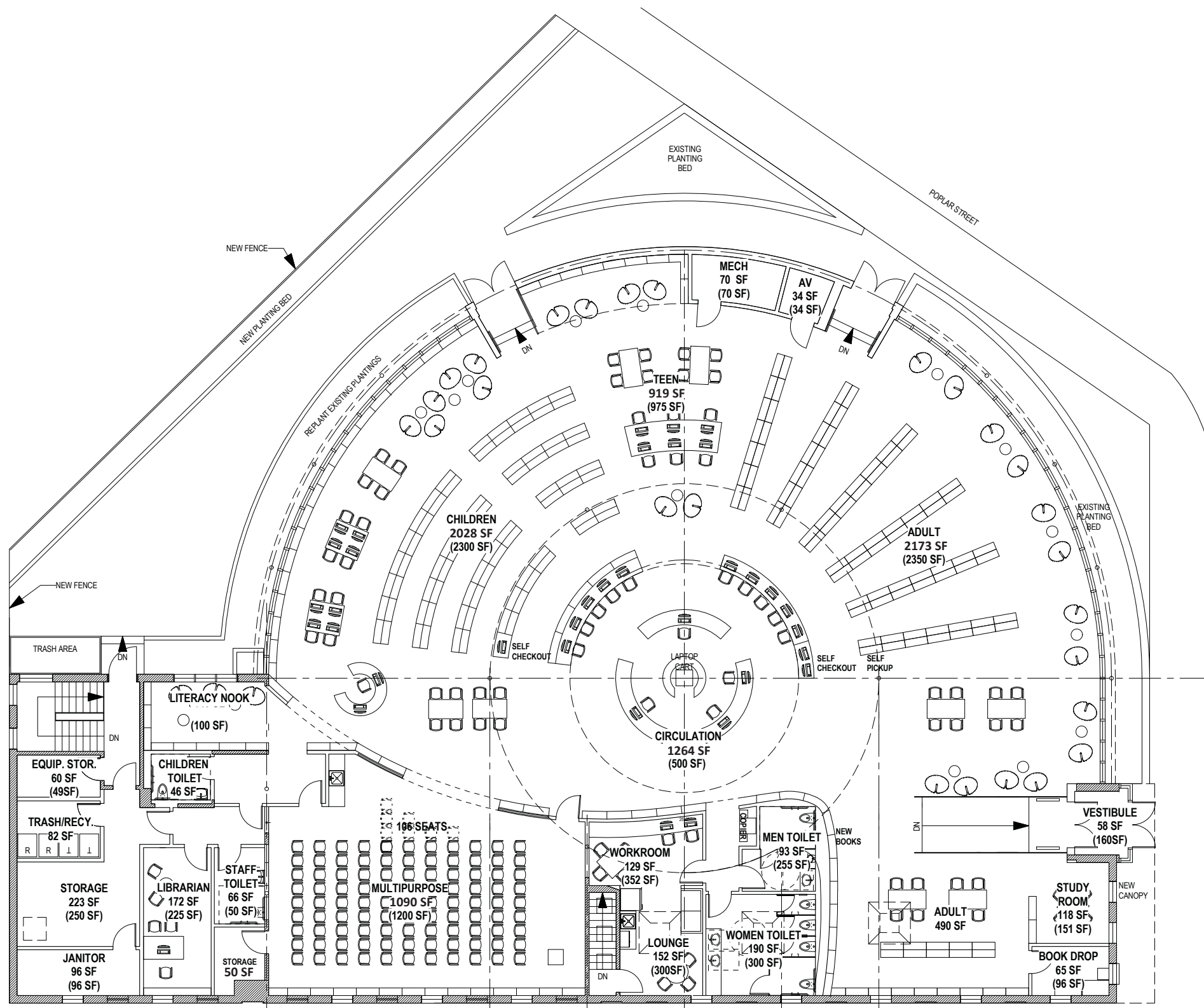
- Efficient circulation station & self checkout/ pickup areas
- Flexibility of use in all areas- childrens, teens, adults
- Improved lighting & acoustics
- Updated furnitures & fixtures
- Fully sprinklered building
- Updated MEP systems
- Support current technology and data needs

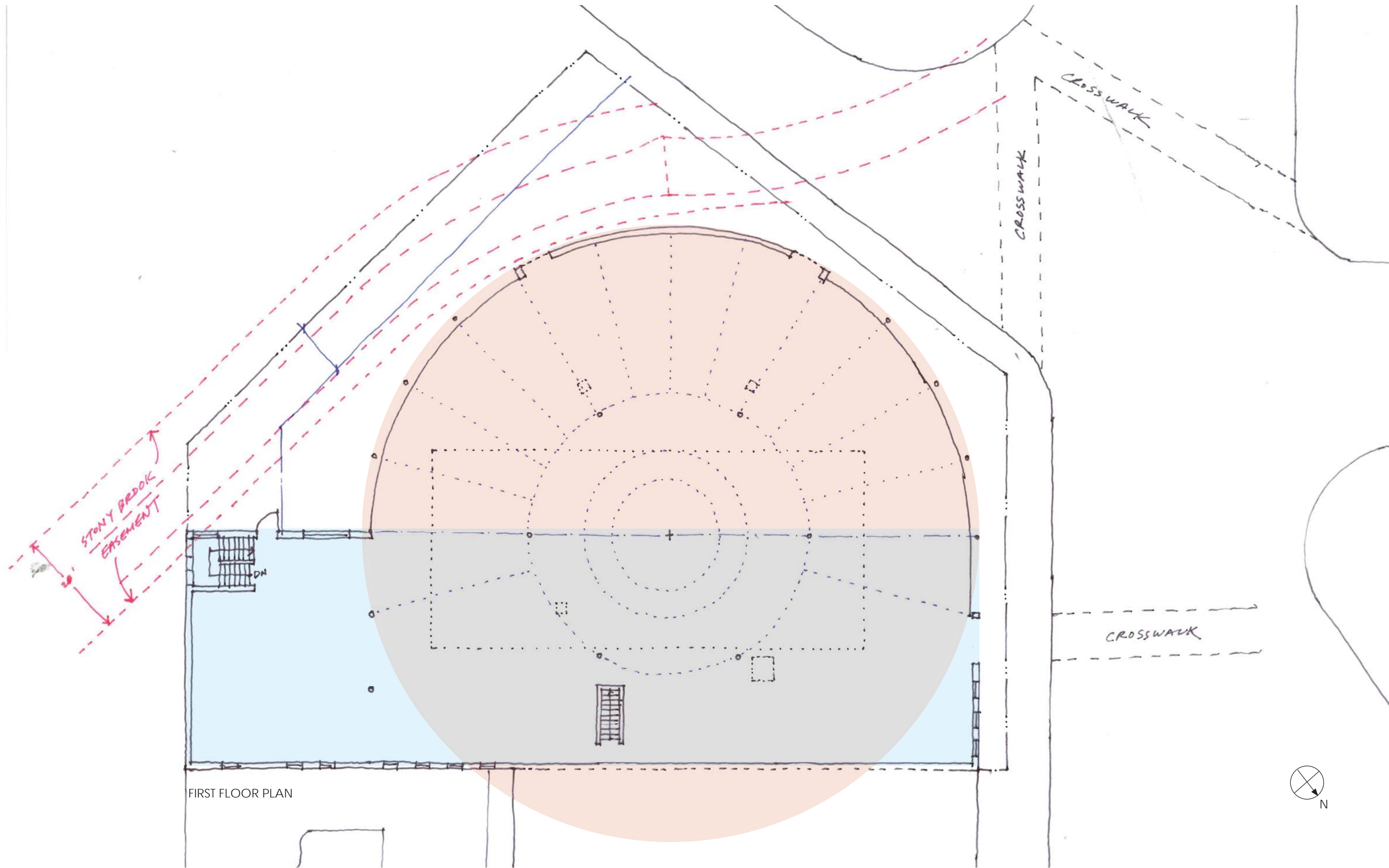


# HOW

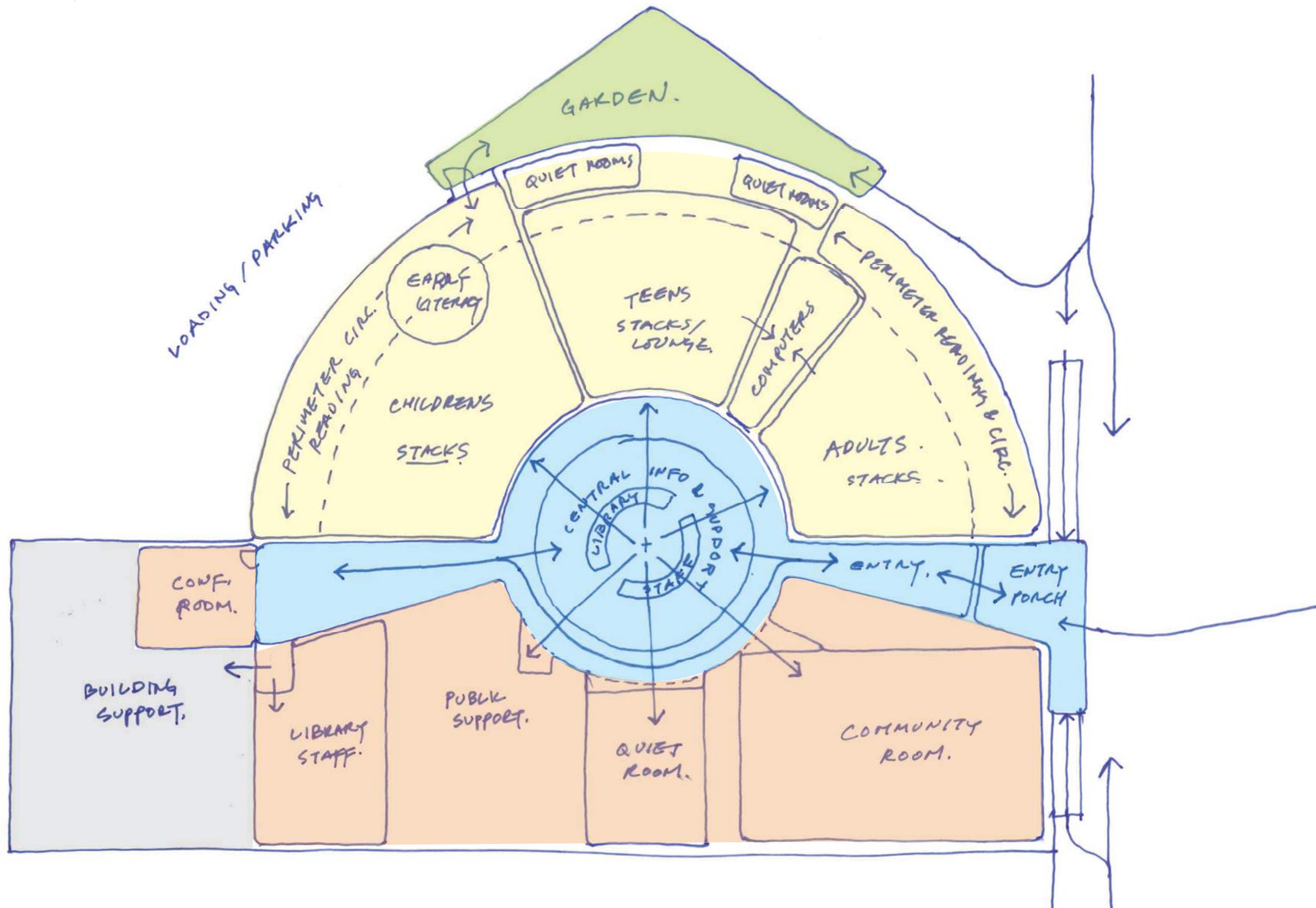
# GOALS

- ALIGN WITH BPL VISION
- RESPECTFUL OF ORIGINAL ARCHITECTURE
- COLLABORATE WITH COMMUNITY
- MINDFUL ALLOCATION OF FUNDS

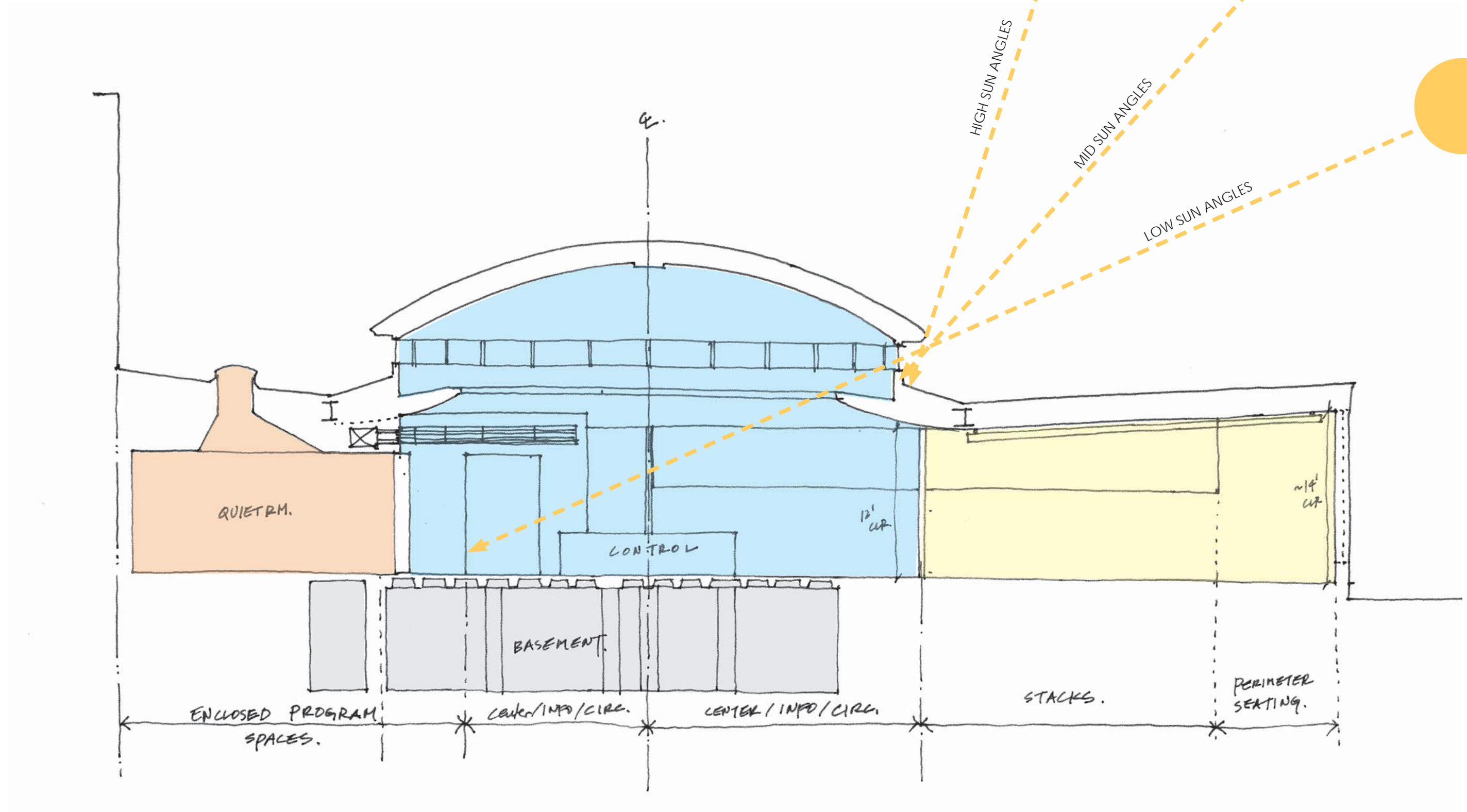




FIRST FLOOR PLAN

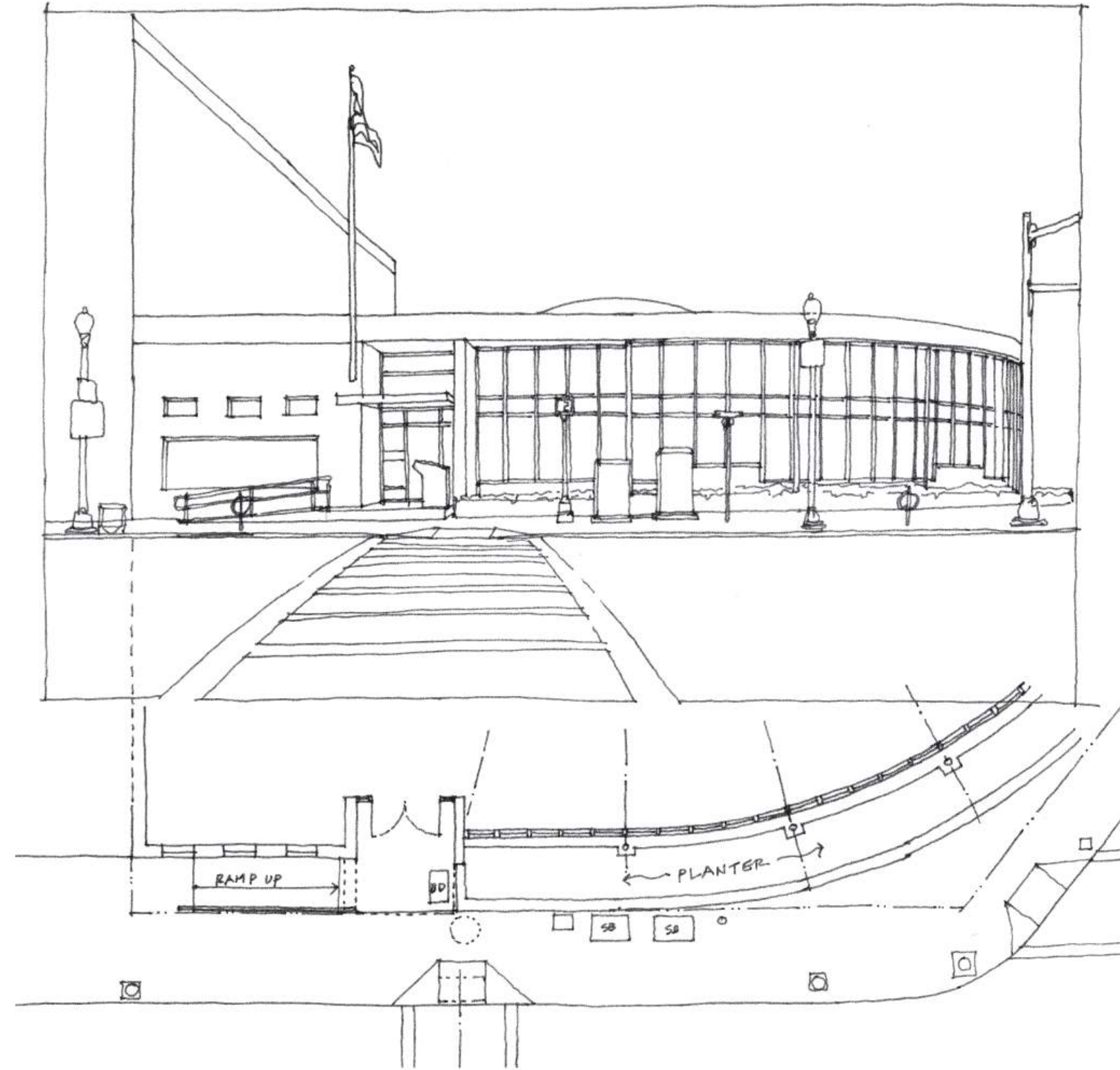




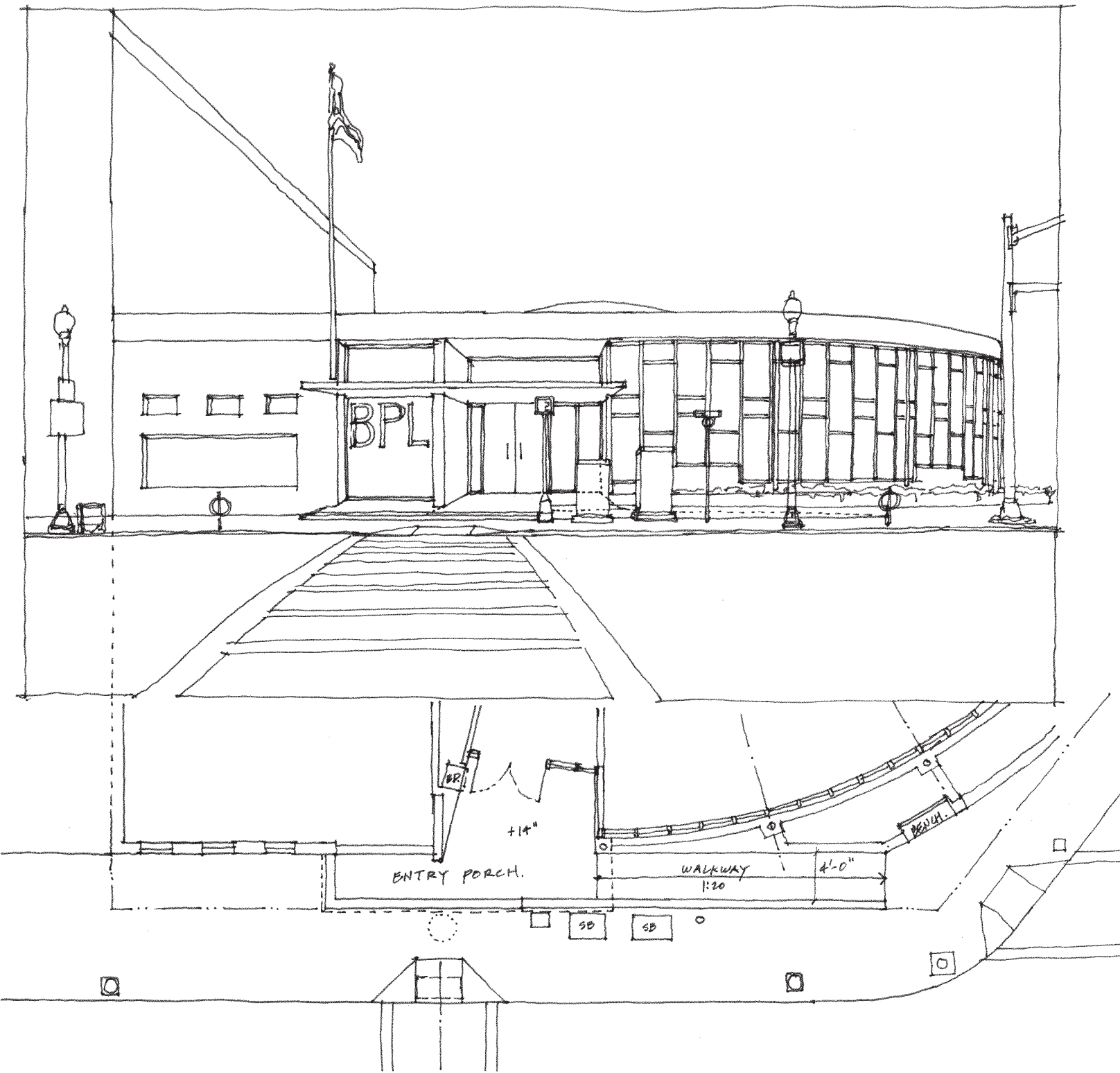




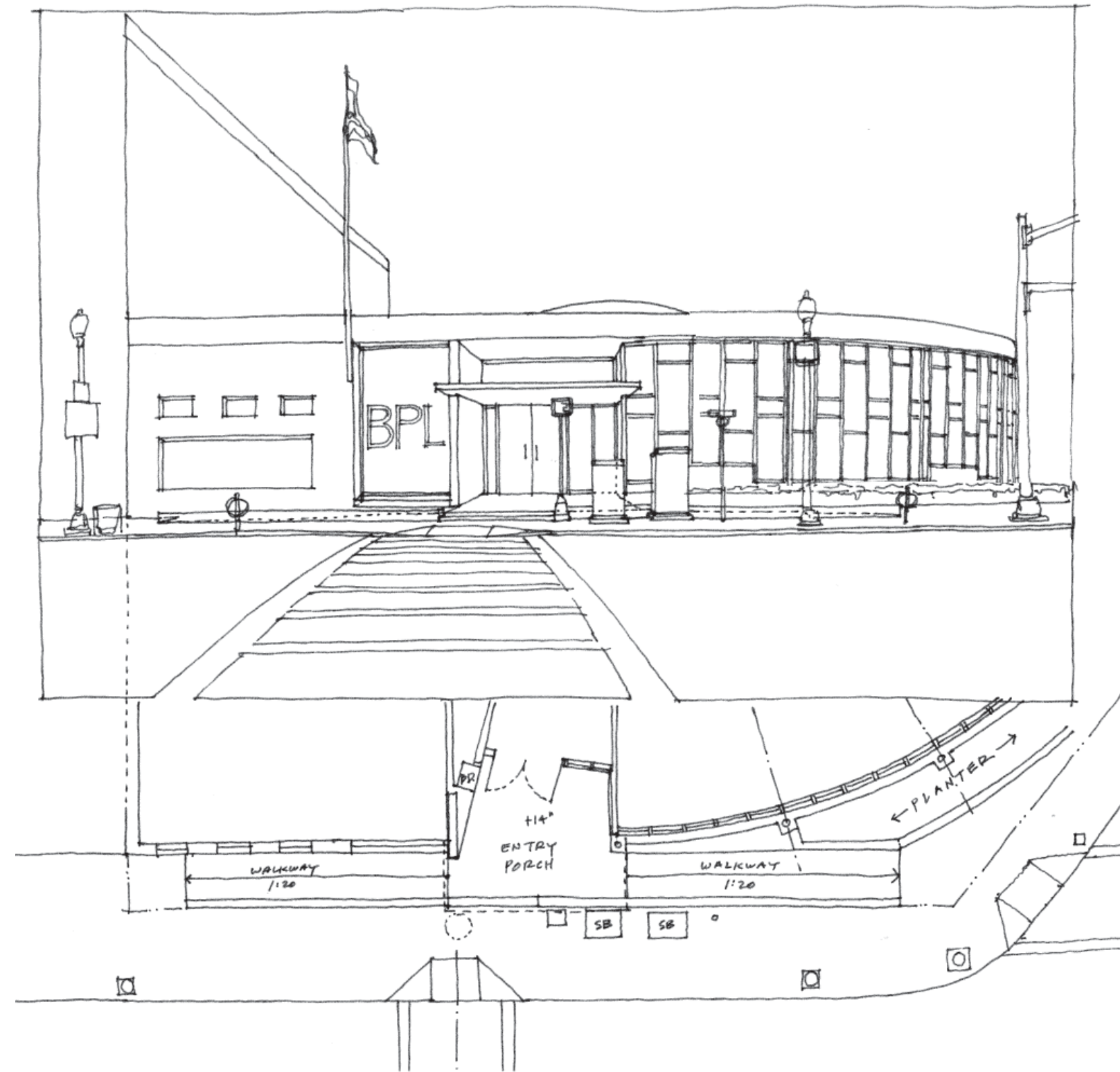
EXISTING CONDITIONS



EXISTING ENTRY



OPTION 1: ENTRY PORCH + WALKWAY



OPTION 2: ENTRY PORCH + WALKWAY ON BOTH SIDES





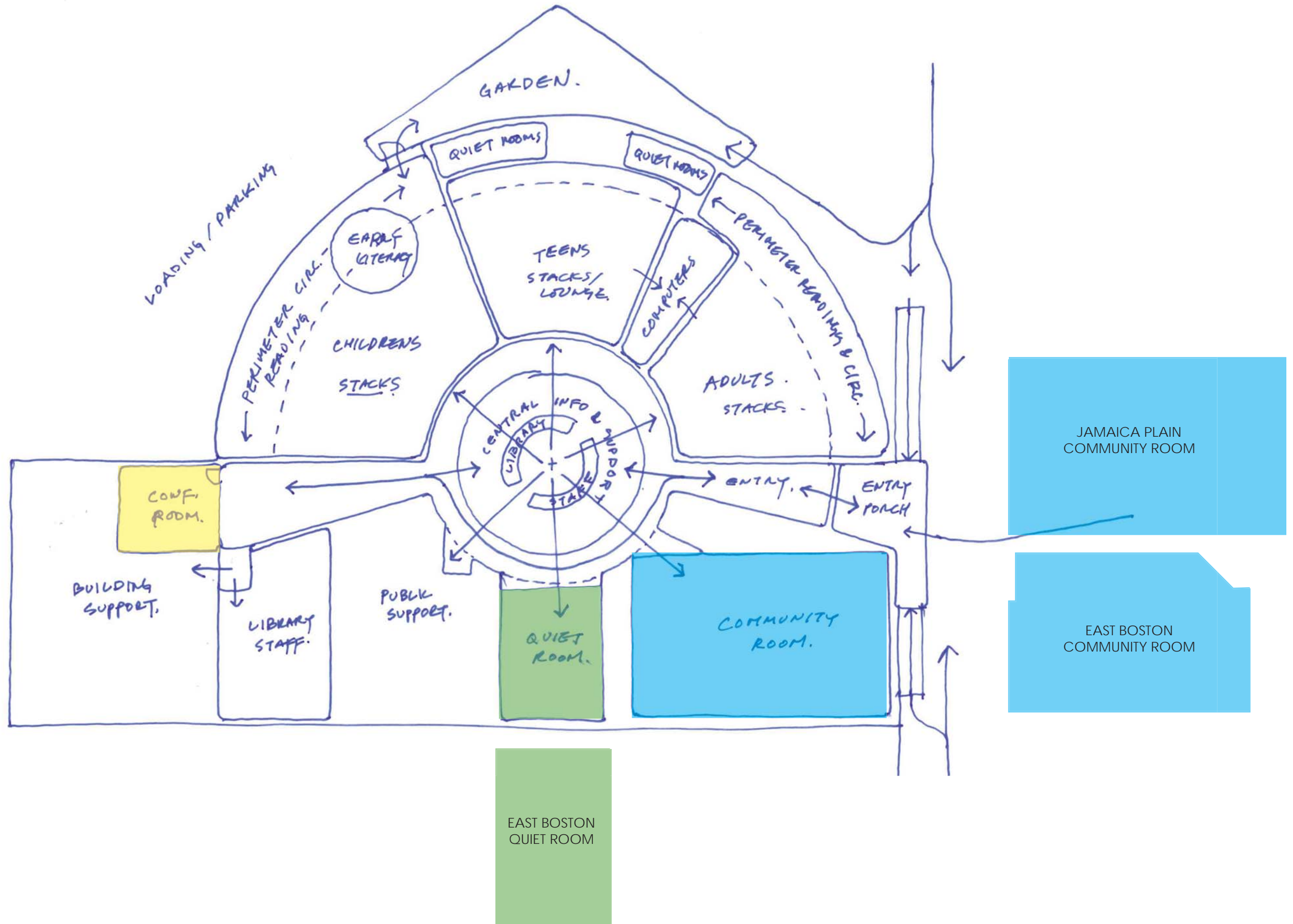












E. BOSTON  
CONF. RM.

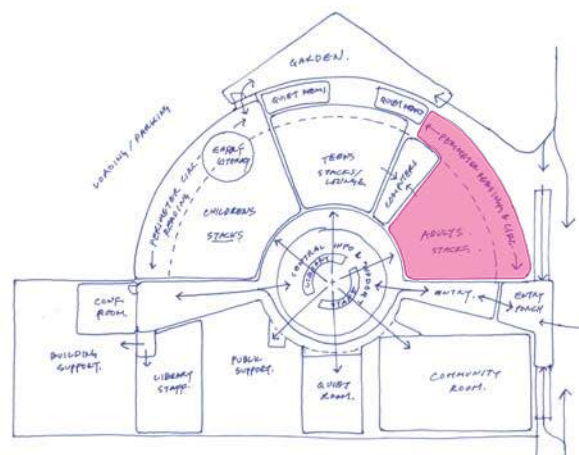
JP  
CONF. RM.

EAST BOSTON  
QUIET ROOM

JAMAICA PLAIN  
COMMUNITY ROOM

EAST BOSTON  
COMMUNITY ROOM

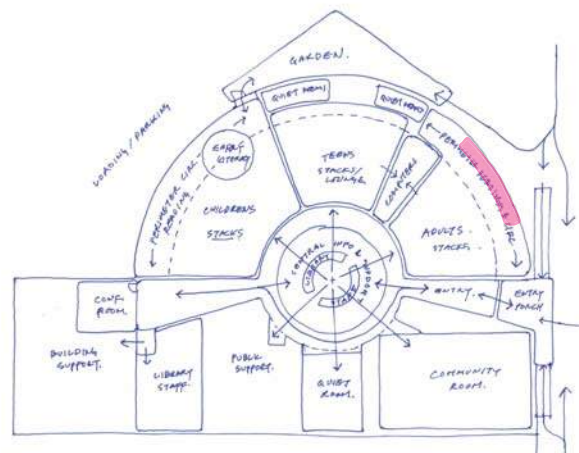
COMMUNITY  
ROOM.



EAST BOSTON BRANCH, BPL

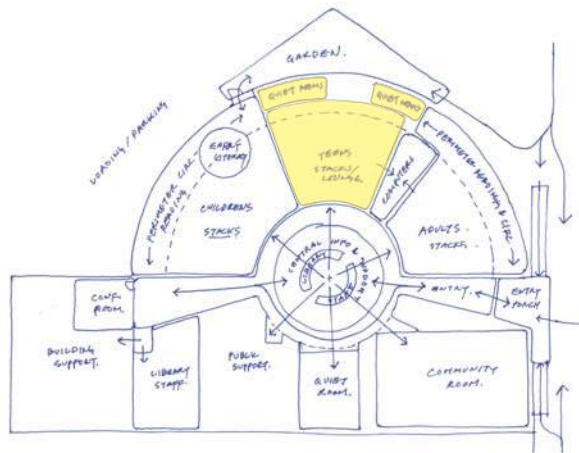


CENTRAL BRANCH, BPL



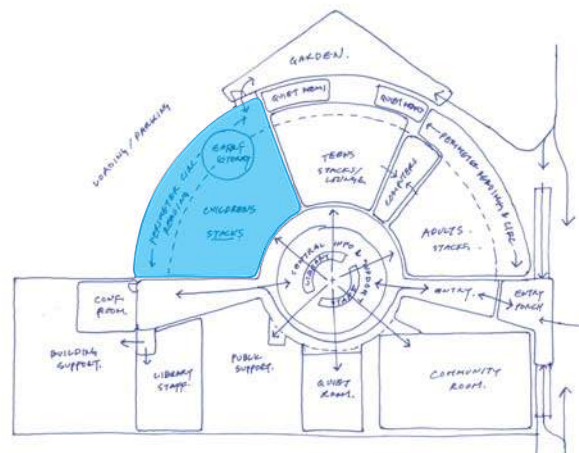


EAST BOSTON BRANCH, BPL



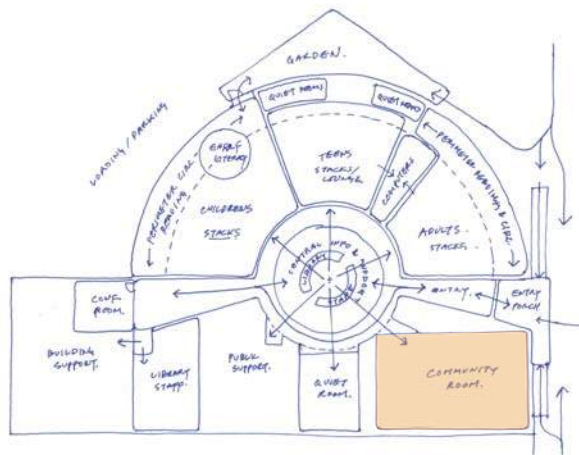


EAST BOSTON BRANCH, BPL



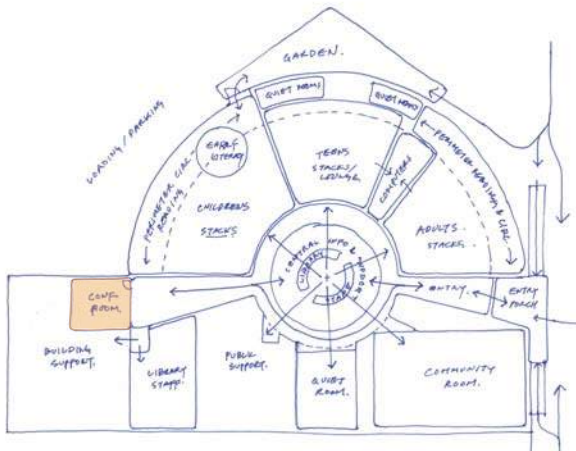


JAMAICA PLAIN BRANCH, BPL





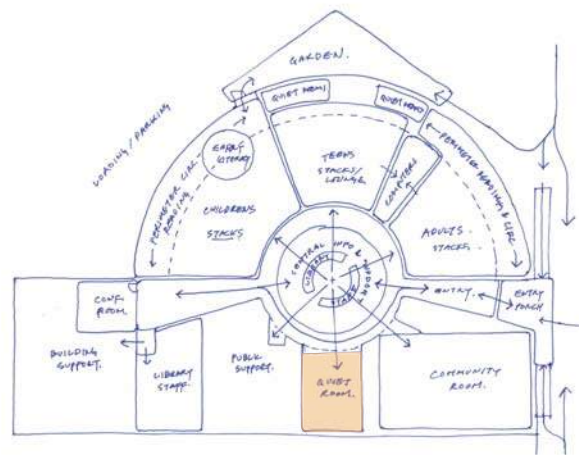
JAMAICA PLAIN BRANCH, BPL







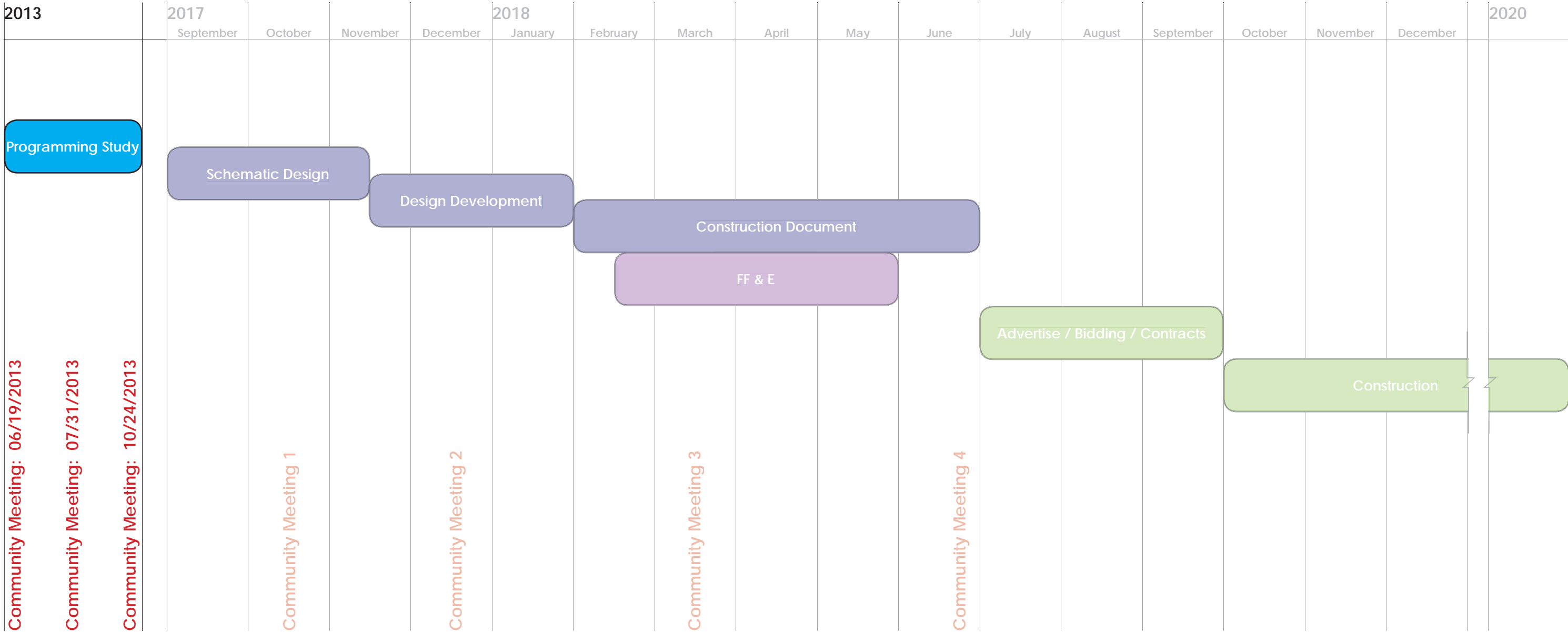
EAST BOSTON BRANCH, BPL



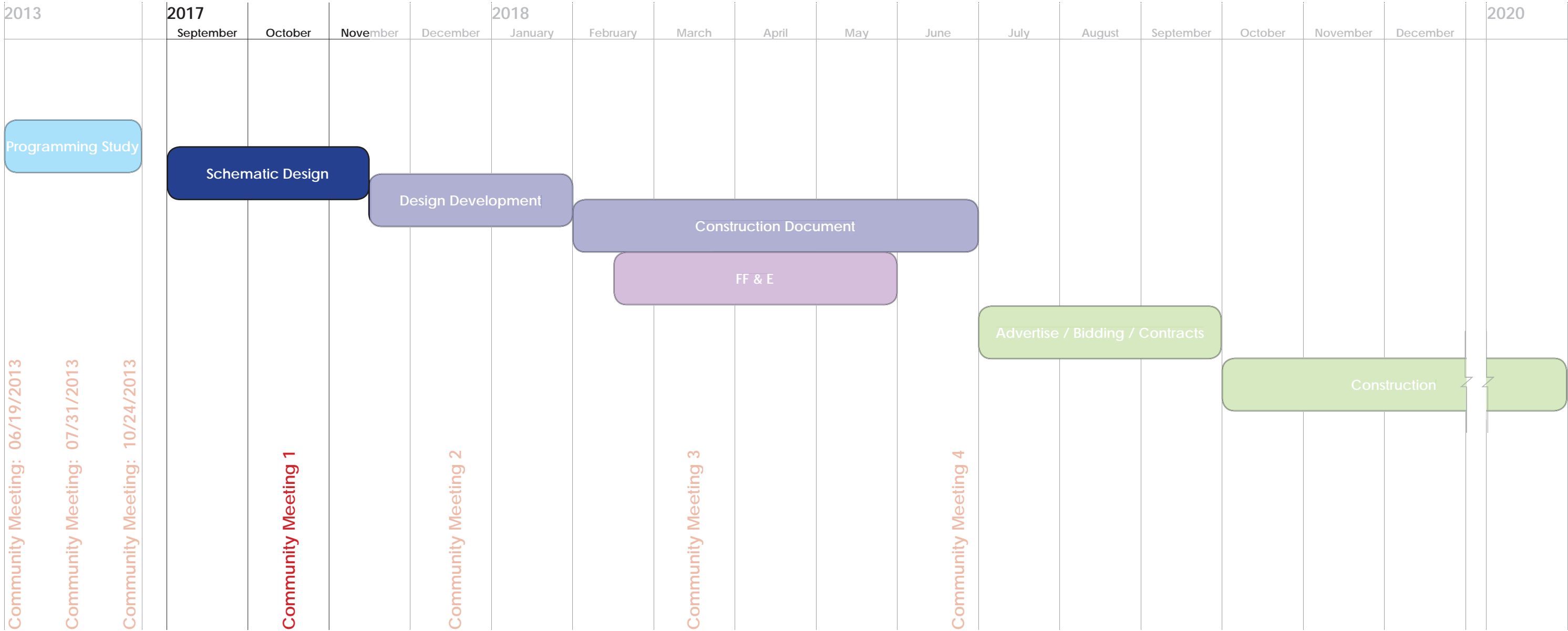
# LIST OF SUSTAINABLE STRATEGIES

- Work with existing structure & building concept and minimize unnecessary structural demolition & upgrades
- Maximize existing daylight through dome & perimeter windows
- Provide new energy efficient MEP system, improve indoor air quality
- Provide clean and environmentally friendly interior materials
- Explore opportunities for renewable energy with respect to budget

# The Schedule

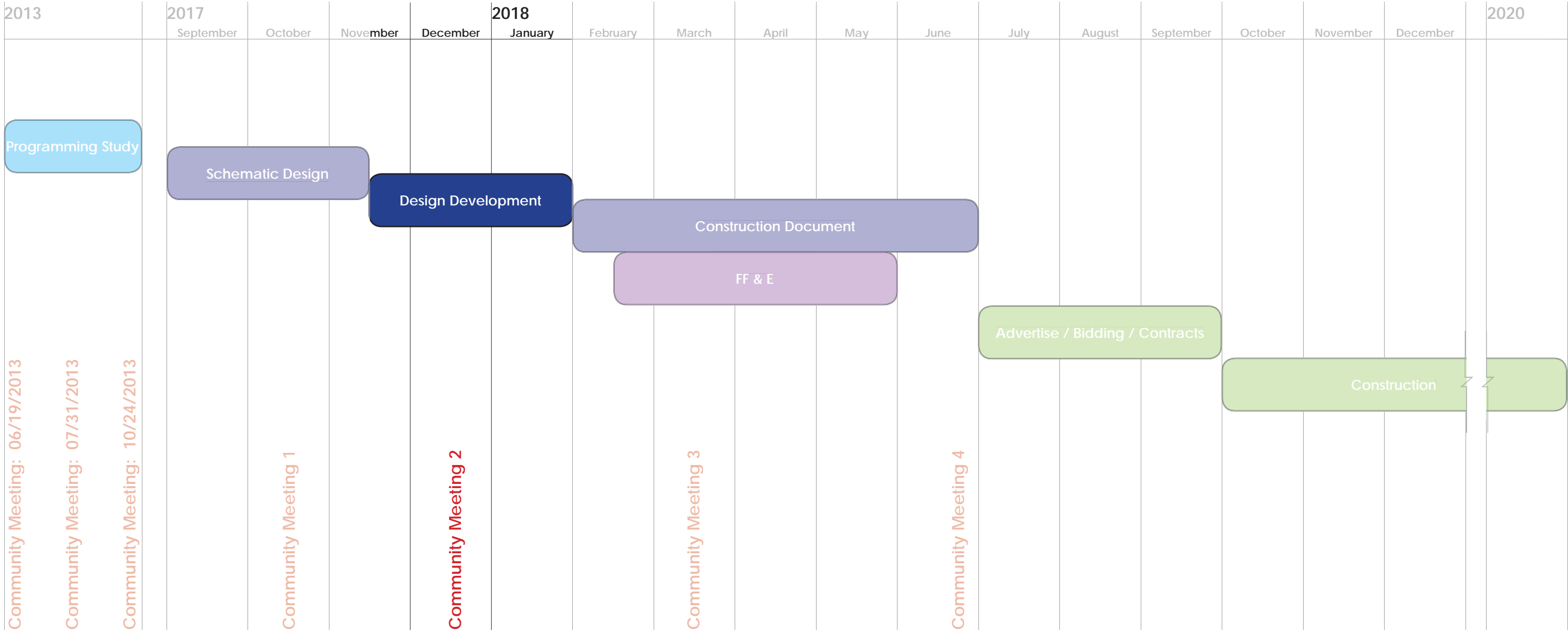


# The Schedule



- Develop Design from Programming Study & Comments
- Incorporate Engineering Disciplines & Field Observations

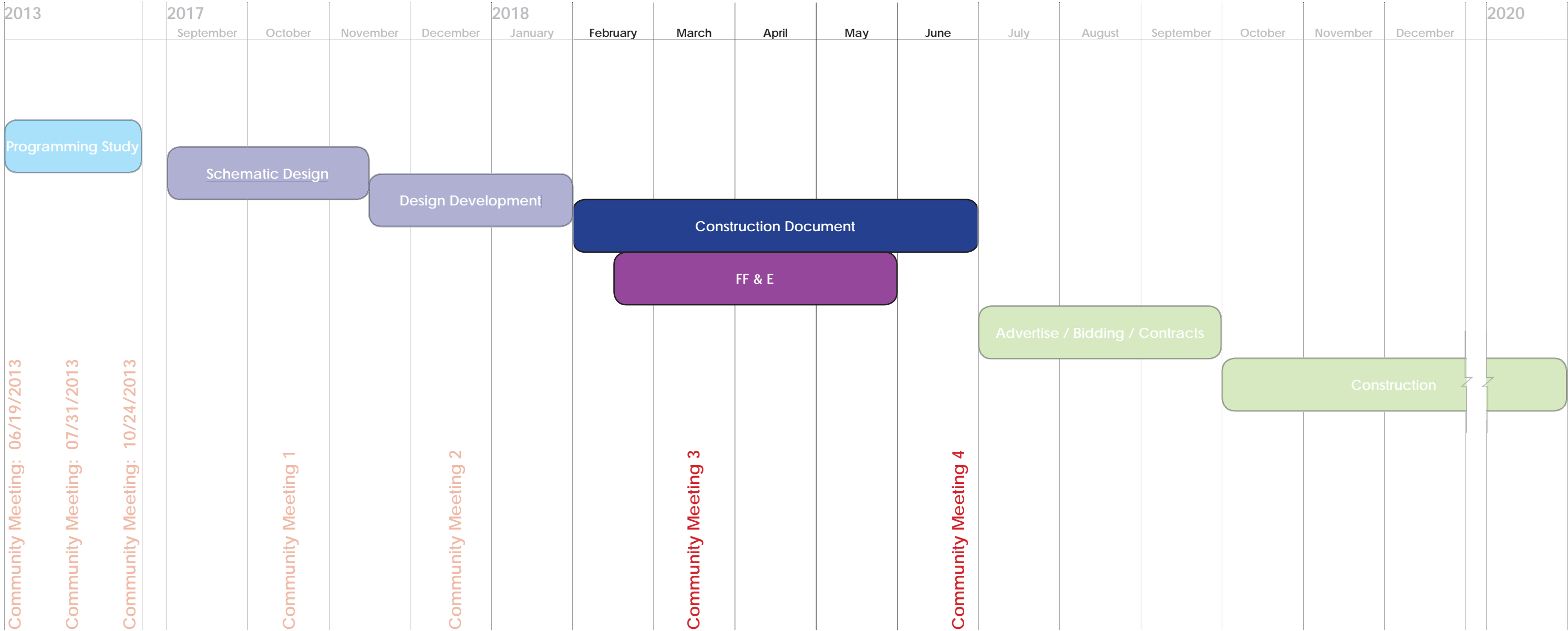
# The Schedule



## WINTER 2017/2018

- Refine Design & Engineering
- Develop Open Space Layout

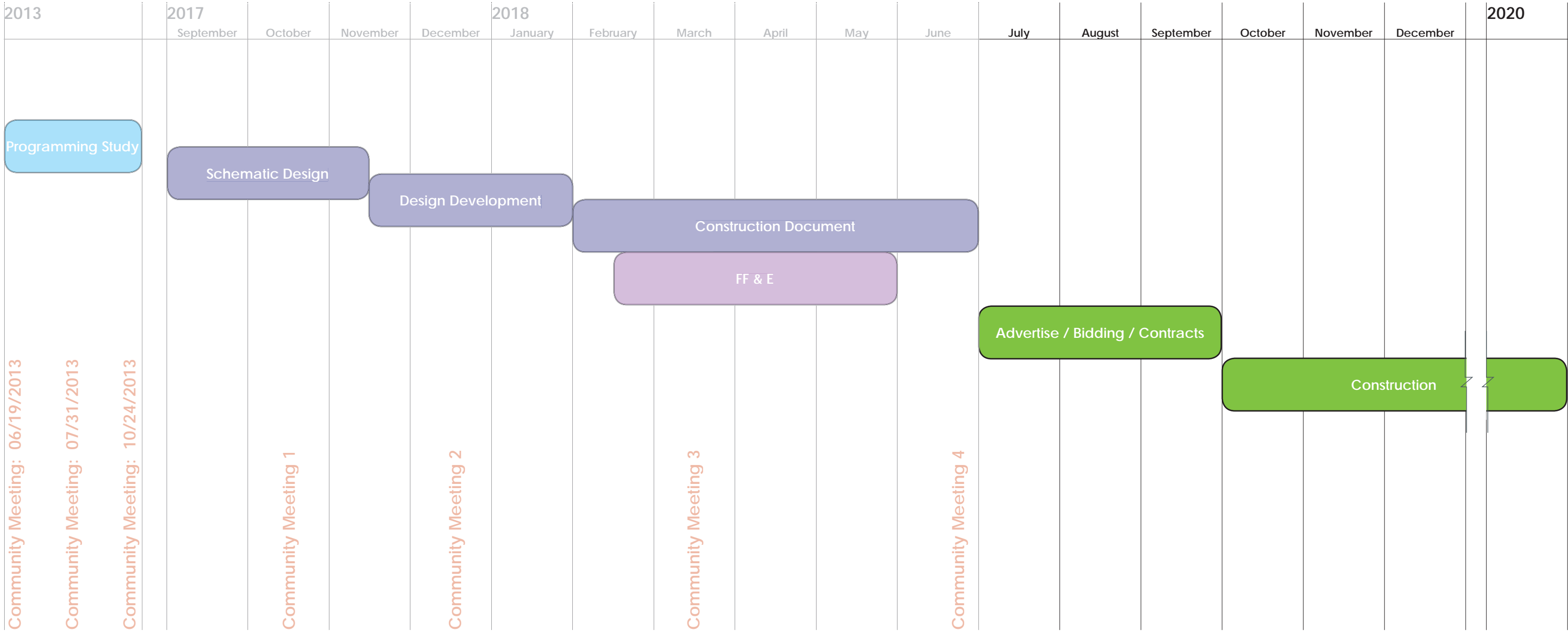
# The Schedule



## WINTER/SPRING 2018

- Prepare Construction Documents
- Develop Interior Finishes & Furnishing

# The Schedule



## SUMMER/FALL 2018 - SPRING 2020

- Finalize Furnishings
- Groundbreaking ceremony
- Library closes for construction

Discussion

THANK YOU



ROSLINDALE BRANCH - BOSTON PUBLIC LIBRARY

[bpl.org](http://bpl.org)

Isidor Richmond & Carney Goldberg, Architects