

# FANEUIL BRANCH OF THE BOSTON PUBLIC LIBRARY

## PROGRAMMING STUDY



# INTRODUCTION

## GOAL:

Reach a preferred design option, through consensus with input from the Community, BPL, PCMD & the Architect

## COMMUNITY INPUT:

3 CAC Meetings -

1. Introductions, gather info
2. Review existing conditions survey & draft Program
3. Present final report & preferred design option with cost estimate, discuss next steps



# INTRODUCTION

## PROCESS

Analyze Existing Facility  
& Services

Develop Library Program

Develop Preliminary  
Designs & Cost Estimates

## SCHEDULE

- CAC meetings about 6+ weeks apart
- Complete the study Spring 2015
- Consideration during the FY '17 business cycle



# BPL COMPASS + BUILDING ANALYSIS + YOUR INPUT = LIBRARY BUILDING PROGRAM

## DEVELOP A LIBRARY BUILDING PROGRAM

- Give a spatial interpretation –
  - quantities and qualities -to the GOALS description of library  
SERVICES & FACILITIES from the  
BPL COMPASS.

## NOT COMPLETE WITHOUT COMMUNITY INPUT



# PATRON SURVEY



## HELP US OUT! - Faneuil Branch Patron Survey

THE BOSTON PUBLIC LIBRARY

Employing its background of more than 30 years of experience in library planning and design, Tappé Architects, Inc. is working with the City of Boston and the Boston Public Library to better understand the **needs of the users of the Faneuil Branch**.

This survey is specifically focused on the potential improvements to the **Faneuil Branch** of the Boston Public Library and how it can better serve its neighborhood.

What are some of the things you might be able to **do** at an updated Faneuil Branch?

All ages will **find traditional information** in books, audio/visual material, magazines, **access digital information**, **borrow material** and **take classes**. Students of all ages can learn to **improve skills** with technology, **practice** a language, or **listen** to a speaker. Kids can **hear** a story, **read**, **learn** and **have fun**. Teens will meet each other, **do homework**, **collaborate** and **talk**. Students of all ages will be able to **study** alone or in groups. Everyone can be **studious** or **be creative** or **relax** in a comfortable chair with a good book, a magazine or **use a computer**.

**You can help us** make the Faneuil Branch become the best it can be, by answering a few questions.

Yes  
No



**Prior to today, have you visited a library (in the Boston Public Library system or elsewhere) in the past year?**

- a. If Yes, How often did you go to a library? Would you say...
- |  |   |
|--|---|
| <input type="checkbox"/> more than 3 times per month | <input type="checkbox"/> about once a month     |
| <input type="checkbox"/> about 2 or 3 times a month  | <input type="checkbox"/> less than once a month |
- b. How long do you typically stay?
- ☐ less than 1hr   ☐ btwn 1hr & 2hrs   ☐ btwn 2hrs & 4hrs   ☐ more than 4 hrs
- c. Which library did you visit?
- |  |  |  |
|--|--|--|
| <input type="checkbox"/> Central Library | <input type="checkbox"/> Faneuil       | <input type="checkbox"/> Parker Hill   |
| <input type="checkbox"/> Adams Street    | <input type="checkbox"/> Fields Corner | <input type="checkbox"/> Roslindale    |
| <input type="checkbox"/> Brighton        | <input type="checkbox"/> Grove Hall    | <input type="checkbox"/> South Boston  |
| <input type="checkbox"/> Charlestown     | <input type="checkbox"/> Hanan-Alston  | <input type="checkbox"/> South End     |
| <input type="checkbox"/> Codman Square   | <input type="checkbox"/> Hyde Park     | <input type="checkbox"/> Uphams Corner |
| <input type="checkbox"/> Connolly        | <input type="checkbox"/> Jamaica Plain | <input type="checkbox"/> West End      |
| <input type="checkbox"/> Dudley          | <input type="checkbox"/> Lower Mills   | <input type="checkbox"/> West Roxbury  |
| <input type="checkbox"/> East Boston     | <input type="checkbox"/> Mattapan      |  |
| <input type="checkbox"/> Egleston Square | <input type="checkbox"/> North End     |  |

☐ If you visited a Boston Public Library Branch other than Faneuil Branch, why?

☐ If you visited a library other than a Boston Public Library, which one and why?

TAPPÉ ARCHITECTS  
BOSTON • TAPPE.COM

## HELP US OUT! - Faneuil Branch Patron Survey

BOSTON PUBLIC LIBRARY

...er, please specify \_\_\_\_\_  
...all the reasons you use the library, which one is the single most important? \_\_\_\_\_ ("a" thru "p")

...ing a computer in the library, do you primarily access library holdings or information  
Internet? \_\_\_\_\_

...y Holdings   ☐ Internet   ☐ Both equally   ☐ Unsure

...you typically travel to the Library?

☐ Walk   ☐ Bus   ☐ Bike   ☐ Other

...oston Public Library plans Faneuil Branch improvements, it needs to understand your  
...that it can prioritize its services. Identify how important you think the services  
...ll be to you and your household in the future.

Providing preschool children with picture books, story hours, and learning materials.  
Providing students, both children and adults, with the books, magazines, Internet access, and other services they need to do their school work.  
Providing information needed to answer personal & household questions.  
This could include, for example, information about how to fix things around the house, hobbies, health issues, or the quality and prices of home appliances.  
Providing specialized collections of books, magazines & computerized information needed for research or write books.  
Providing business information to businesses in your community.  
This could include, for example, information about sales or marketing, worker safety, environmental protection, or setting up a new business.  
Serving as the hub of the community - a place where organizations or clubs could hold meetings or present concerts and lectures.  
Providing people with information about their community.  
This could include, for example, information about local government, issues or laws about local community services such as health clinics or daycare.  
Providing adults who are NOT students with the materials and services they need to better themselves or to learn a new skill.  
Providing a comfortable place to go when they need someplace outside of their house or apartment to read or think or work.

### Questions - Patron Demographics

Are you currently a student attending school or taking classes? \_\_\_\_\_

What language do you speak at home? \_\_\_\_\_

How many children age 17 and under are living in your household? \_\_\_\_\_

How many people over the age of 65 are living in your household? \_\_\_\_\_

Gender

☐ Female   ☐ Male

Age Range

☐ 0 - 19   ☐ 20 - 39   ☐ 40 - 55   ☐ 56 - 70   ☐ Over 70

...for your input! You can also participate in the survey on-line at:  
[www.surveymonkey.com/s/FaneuilBranch](http://www.surveymonkey.com/s/FaneuilBranch)

ARCHITECTS  
• TAPPE.COM

## HELP US OUT! - Faneuil Branch Patron Survey

BOSTON PUBLIC LIBRARY

Kinds of spaces would you like to see more of in an improved Faneuil Branch? (pick up to 4)

- |  |   |
|--|---|
| <input type="checkbox"/> Children's room   | <input type="checkbox"/> Spaces for individual study                        |
| <input type="checkbox"/> Space for children's story times & programs               | <input type="checkbox"/> Consulting/Tutoring rooms for 2 people             |
| <input type="checkbox"/> Special area for preschool age children & their parents   | <input type="checkbox"/> Group collaboration rooms (for 4 or more)          |
| <input type="checkbox"/> Teen Space  | <input type="checkbox"/> Quiet reading room                                 |
| <input type="checkbox"/> Library computers I can use                               | <input type="checkbox"/> Variety of comfortable seating places              |
| <input type="checkbox"/> Space for using my own technology (e.g. laptops, tablets) | <input type="checkbox"/> Collections Spaces (books, audio/video, magazines) |
| <input type="checkbox"/> Meeting Rooms for community groups                        | <input type="checkbox"/> Listening/viewing stations                         |
| <input type="checkbox"/> Informal meeting and networking places                    | <input type="checkbox"/> Outdoor reading area                               |
| Other, please specify _____  | <input type="checkbox"/> Gallery/exhibition space                           |

### Works? - What Doesn't? - What's Missing?

...atures/services of the current Faneuil Branch Library do you feel should be **retained** in a renovated

...hortcomings of the current Faneuil Branch Library ought to be **avoided** in renovated Library?

...e to library spaces, can you identify **initiatives** or **innovations** you have seen/heard of/read about in  
...braries that ought to be considered for an improved Faneuil Branch Library?

...below are some of the reasons why people use the public library. For each reason  
...like you to tell us if that is why you use the library. I USE THE LIBRARY...

to find information that I need  
to bring children so that they can do school work  
to bring children so that they borrow materials  
to bring children to library programs  
to read newspapers and magazines (print or digital)  
to browse and borrow materials  
to do research for my job or my business  
to study or to do research for school papers and projects  
to do research for personal projects that are not for school or work  
to attend library programs and exhibits designed for adults  
as a place to go to, to sit quietly and read, or to be around other people  
to use the library's meeting room  
to use a library computer to access digital information for work, research, or enjoyment  
to use free wireless/wi-fi  
to learn how to use technology or take a computer class  
to attend literacy or other classes

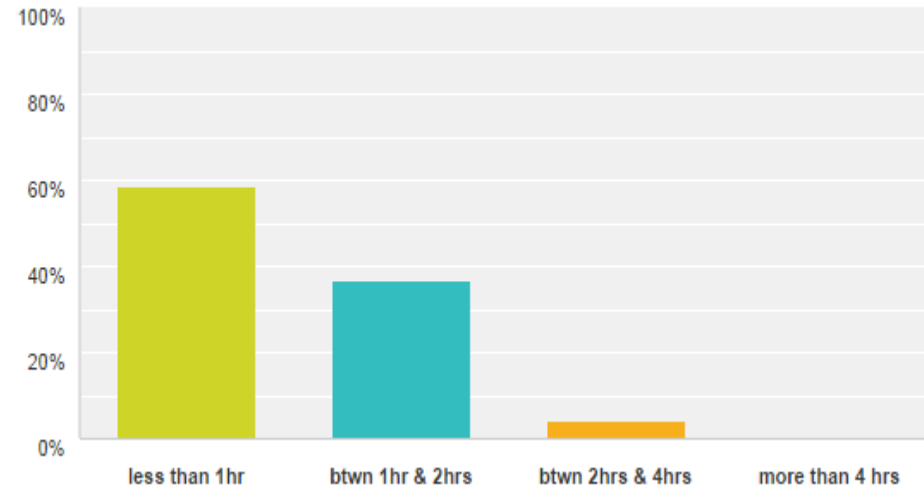
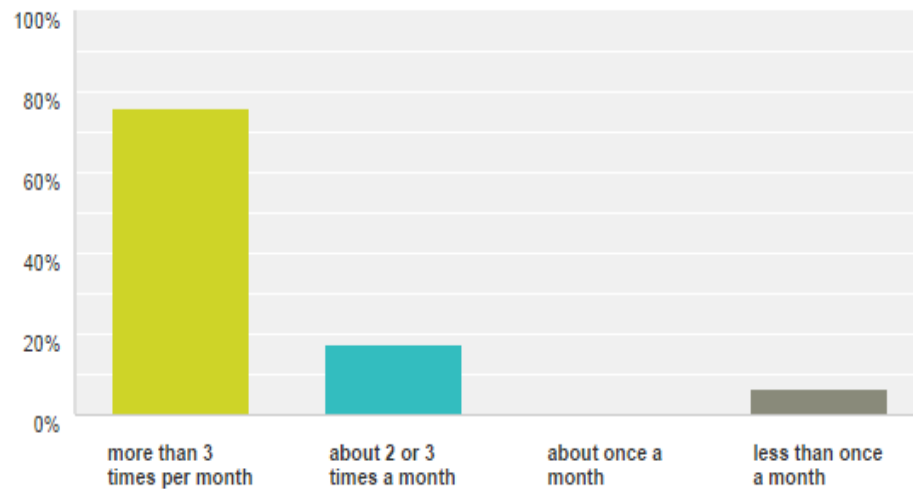
TAPPÉ ARCHITECTS  
BOSTON • TAPPE.COM

FANEUIL BRANCH  
of the Boston Public Library  
PROGRAMMING STUDY

Tappé Architects, Inc.



# PATRON SURVEY



## How Often?

## For How Long?

FANEUIL BRANCH  
of the Boston Public Library  
PROGRAMMING STUDY

Tappé Architects, Inc.



# PATRON SURVEY - WHY GO TO OTHER LIBRARIES ?

“Minuteman Libraries because they carry Blu-Ray DVDs”

“Billerica Public Library because it is near my work”

“Watertown MA. New facility, it is updated, clean and bright.”

“Watertown, MA - Like the cafe/used bk area”

“Newton because it's really good”

“If they have a book Faneuil doesn't”

“Watertown Public Library. I borrow books there that I can't get through BPL. Also, I go there to work and be anonymous”

“I go to Faneuil because of it's proximity to my home and the friendliness of the staff”



# PATRON SURVEY

WHAT WORKS?

WHAT DOESN'T?

WHAT'S MISSING?

FANEUIL BRANCH  
of the Boston Public Library  
PROGRAMMING STUDY

Tappé Architects, Inc.



# PATRON SURVEY — WHAT WORKS?

“Art Deco architectural features”

“Unique architecture”

“outdoor space is nice”

“Central check-out desk- you get to interact with the librarians right when you walk in”

“comfortable, informal welcoming atmosphere”

“Intimacy, sense of community, old library charm”

“separate children's room”

“stage in the children's section”

“adequate shelving for books”

“Great service in ordering books”

“soft seating for reading”

“tables for study and reading”

“separate computer space”

“keep computer stations and expand this access”

“Very good assistance from library staff”



# PATRON SURVEY — WHAT DOESN'T?

"Terrible bathroom situation"

"use of space seems out dated and strange"

"lack of handicapped entrance"

"lack of organized space for the staff"

"space for DVDs"

"space for new releases & new magazines"

"Make comfortable place for to read paper"

"Currently there is no quiet space"

"more bookshelves/ books"

"overall too cramped"

"More space in computer area"

"plugins for personal technology/ computers"

"no quiet room"

"better use of backyard area"

"Stage ever used?"

"Better air conditioning"



# PATRON SURVEY — WHAT'S MISSING?

“quiet reading room, children's room,  
tutoring rooms”

“3D printers or tech area”

“much faster wifi/internet”

“Variety of comfortable seating  
places”

“Space for young adults to use wifi,  
personal laptops and tablets, drink  
coffee”

“separate reading room with  
comfortable chairs and desks”

“furniture that complements the  
building style”

“tutorial spaces”

“single computers on study desks  
throughout the library in  
addition to a few computers  
grouped together”

FANEUIL BRANCH  
of the Boston Public Library  
PROGRAMMING STUDY

Tappé Architects, Inc.



# BUILDING ASSESSMENT Issues & Opportunities



**FANEUIL BRANCH**  
of the Boston Public Library  
**PROGRAMMING STUDY**

Tappé Architects, Inc.



# BUILDING ASSESSMENT Issues & Opportunities



**FANEUL BRANCH**  
of the Boston Public Library  
**PROGRAMMING STUDY**



# BUILDING ASSESSMENT Issues & Opportunities



FANEUIL BRANCH  
of the Boston Public Library  
PROGRAMMING STUDY



# BUILDING ASSESSMENT Issues & Opportunities



FANEUL BRANCH  
of the Boston Public Library  
PROGRAMMING STUDY



# BUILDING ASSESSMENT Issues & Opportunities



FANEUL BRANCH  
of the Boston Public Library  
PROGRAMMING STUDY



# BUILDING ASSESSMENT

## Issues & Opportunities

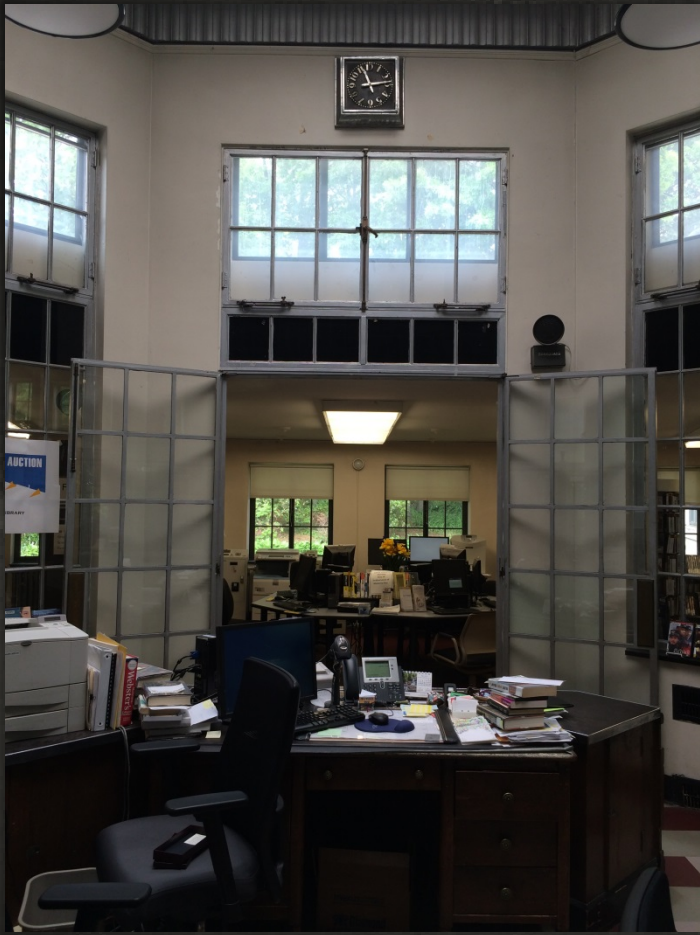


**FANEUIL BRANCH**  
of the Boston Public Library  
**PROGRAMMING STUDY**



# BUILDING ASSESSMENT

## Issues & Opportunities



**FANEUIL BRANCH**  
of the Boston Public Library  
**PROGRAMMING STUDY**



# BUILDING ASSESSMENT Issues & Opportunities



**FANEUIL BRANCH**  
of the Boston Public Library  
**PROGRAMMING STUDY**



# BUILDING ASSESSMENT

## Issues & Opportunities



FANEUIL BRANCH  
of the Boston Public Library  
PROGRAMMING STUDY



# BUILDING ASSESSMENT

## Issues & Opportunities



**FANEUIL BRANCH**  
of the Boston Public Library  
**PROGRAMMING STUDY**

Tappé Architects, Inc.



# BUILDING ASSESSMENT

## Issues & Opportunities



**FANEUL BRANCH**  
of the Boston Public Library  
**PROGRAMMING STUDY**



# BUILDING ASSESSMENT

## Issues & Opportunities



**FANEUL BRANCH**  
of the Boston Public Library  
**PROGRAMMING STUDY**



# BUILDING ASSESSMENT

## Issues & Opportunities



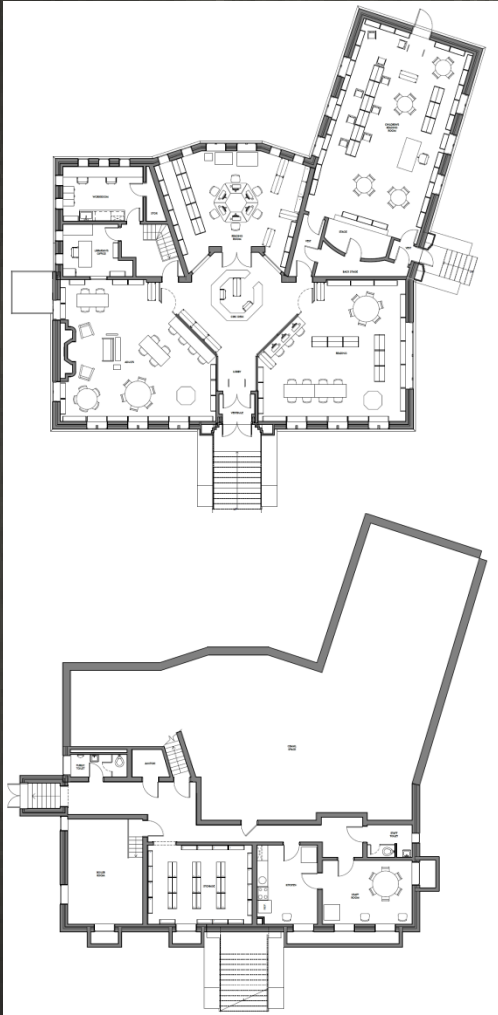
**FANEUL BRANCH**  
of the Boston Public Library  
**PROGRAMMING STUDY**

Tappé Architects, Inc.



# INITIAL APPROACH...

## Maximize Potential in the Existing Space



### FITTING THE PROGRAM INTO THE AVAILABLE SPACES

- Optimize Daylight
- Enhance People Space  
Living Edge, Contemplation, Focused Concentration,  
Networking/Teaming/Collaborating
- House Collections  
more accessible, more attractive, more uniquely appropriate
- Recognize the BPL system can accommodate some functions

FANEUIL BRANCH  
of the Boston Public Library  
PROGRAMMING STUDY



# GLOBAL PERSPECTIVE

## Why Come to the Library?

If Google completes its digital Library

WHY GO to a real Library?

If you can wear information access, do we need Libraries?

YES. Libraries are the unique places with the resources for facilitating the gathering, using, creating & sharing information.



# GLOBAL PERSPECTIVE

## Why Come to the Library?

*"People don't borrow books anymore"*

Browsed the shelves for books or media	73%
Borrowed print books	73%
Researched topics that interest them	54%
Got help from a librarian	50%
Sat, read, and studied, or watched or listened to media	49%
Used a research database	46%
Attended or brought a youngster to a class, program, or event designed for children or teens	41%
Borrowed a DVD or videotape of a movie or TV show	40%
Read or checked out printed magazines or newspapers	30%
Attended a meeting of a group to which they belong	23%
Attended a class, program, or lecture for adults	21%
Borrowed or downloaded an audiobook	17%
Borrowed a music CD	16%

Source: Pew Internet and American Life Project, "Library Services in the Digital Age" (January 2013).

**FANEUIL BRANCH**  
of the Boston Public Library  
**PROGRAMMING STUDY**

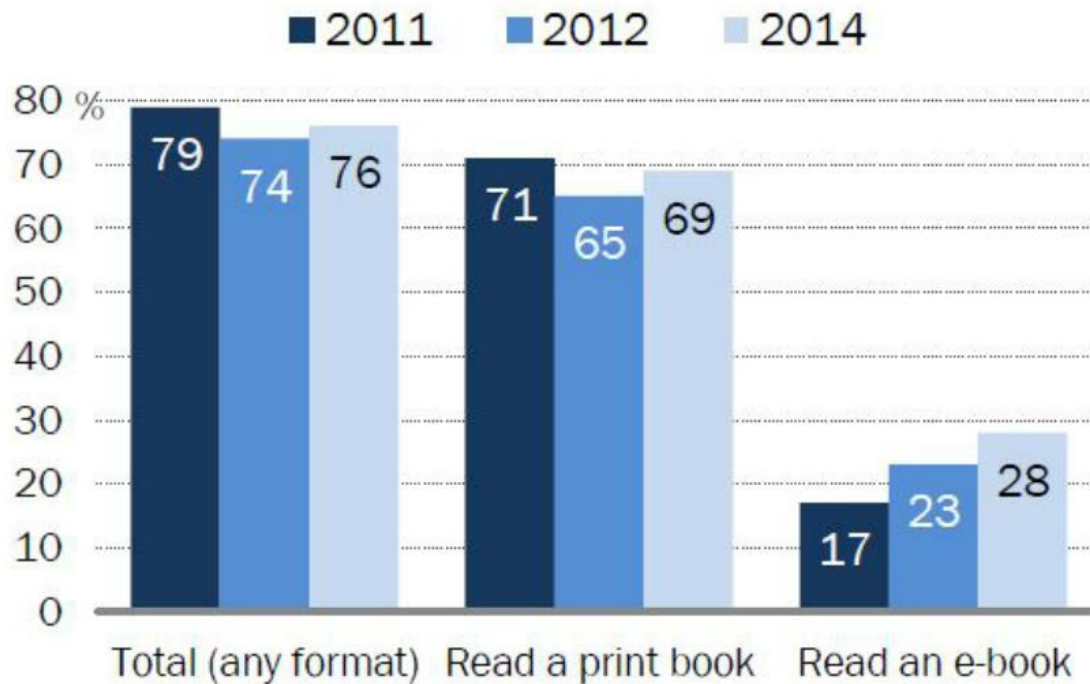


# GLOBAL PERSPECTIVE

## Why Come to the Library?

*"Nobody reads print books anymore"*

Among American adults 18 and older, the % who read at least one book (in total, in print, or as an e-book) in the past year



FANEUIL BRANCH  
of the Boston Public Library  
PROGRAMMING STUDY



# GLOBAL PERSPECTIVE

## Why Come to the Library?

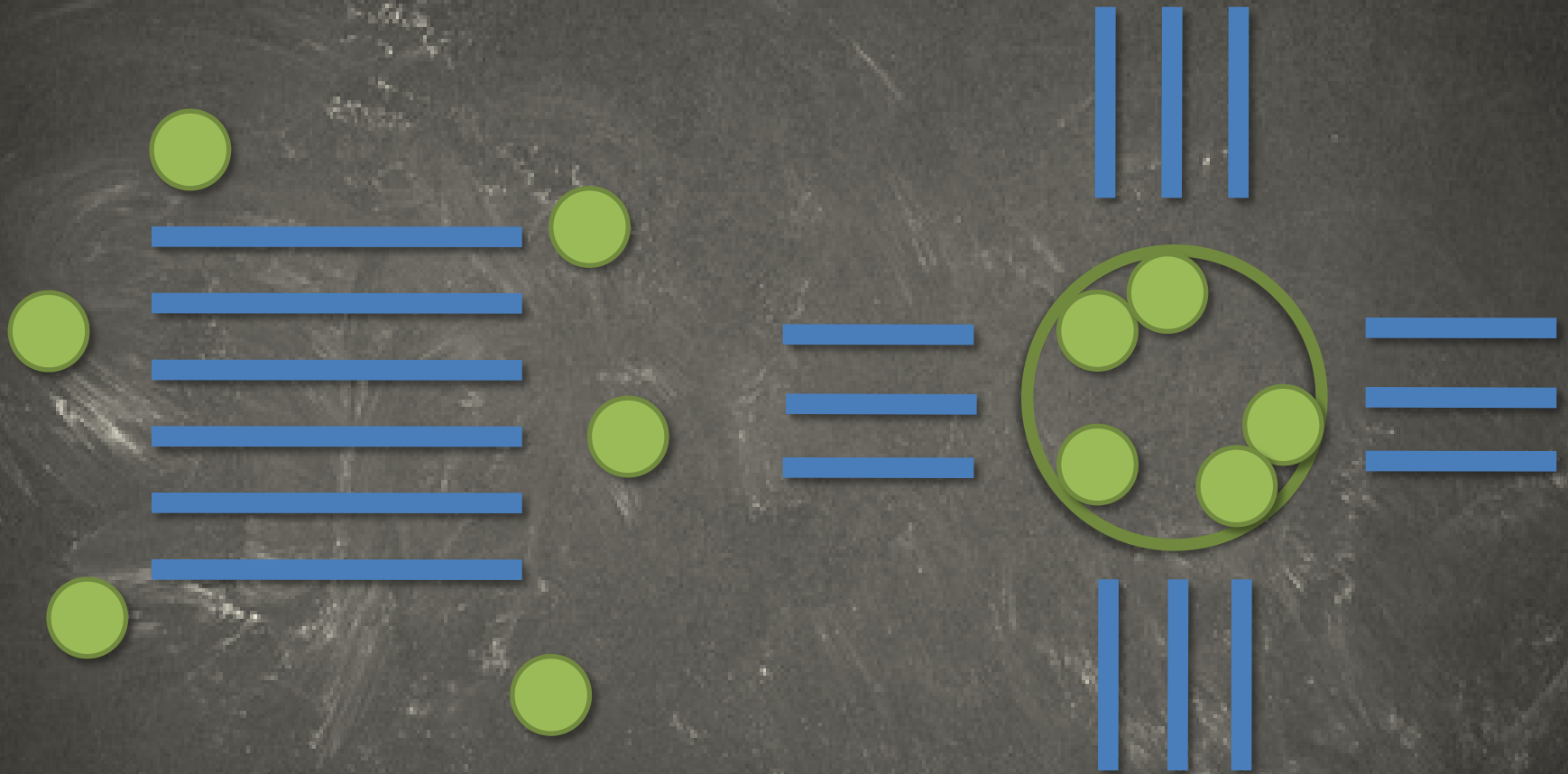


FANEUIL BRANCH  
of the Boston Public Library  
PROGRAMMING STUDY



# GLOBAL PERSPECTIVE

## Why Come to the Library?



FANEUIL BRANCH  
of the Boston Public Library  
PROGRAMMING STUDY

Tappé Architects, Inc.



# LIBRARIES ARE CHANGING— The Ingredients



# LIBRARIES ARE CHANGING—

What could/should the Library be Like?

It Will Have:

- Space for Collections
- Learning Environments
  - Information “Harvest” Spaces
  - Meeting or “Sharing” Spaces
  - Productive “Creation” Spaces



# LIBRARY TECHNOLOGY...

Library Technology will  
continue to evolve & become:

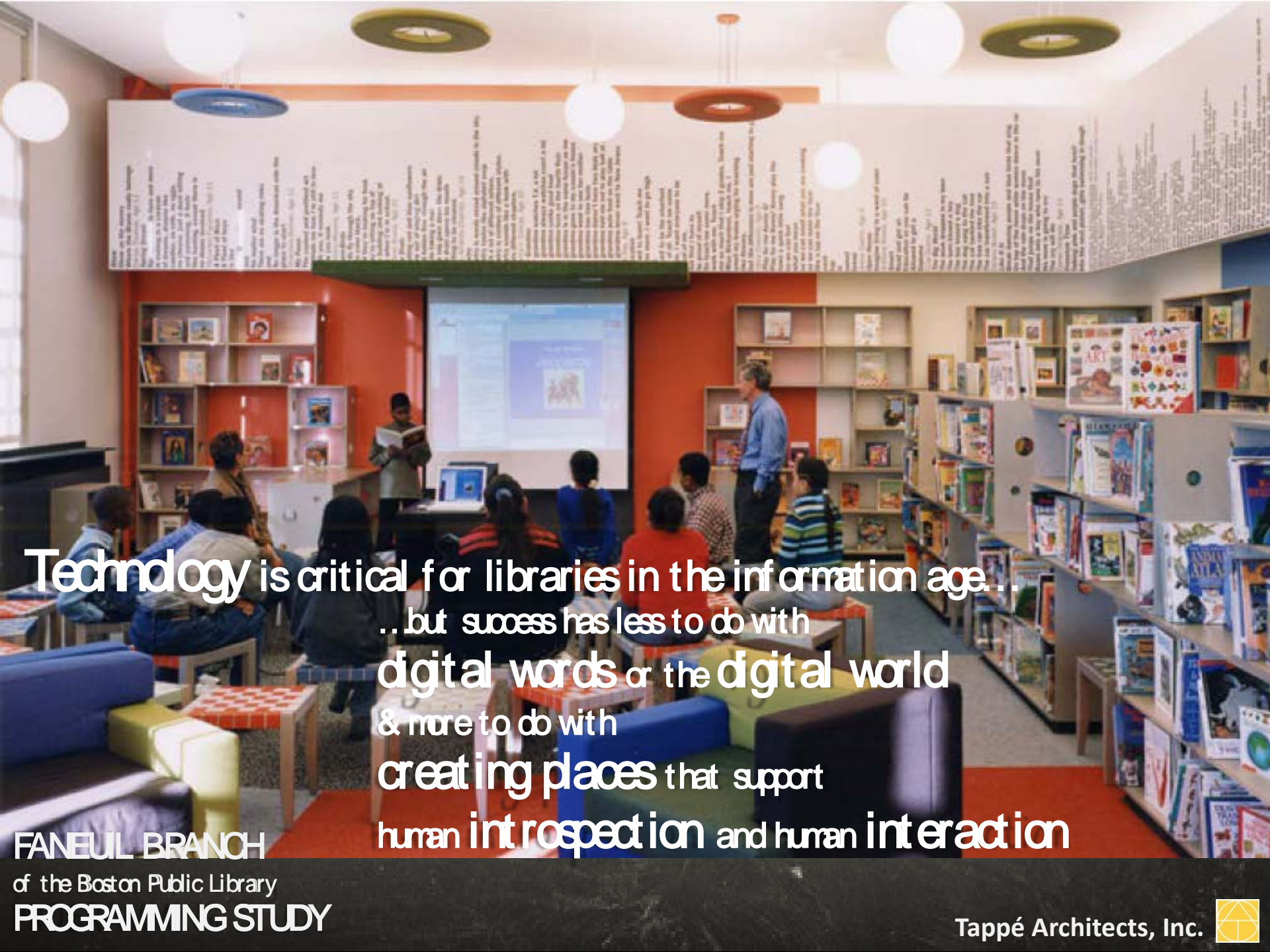
- Integrated & Powerful
- Mobile
- Visible

Library spaces will  
accommodate patron's mobile  
Technology



FANEUIL BRANCH  
of the Boston Public Library  
PROGRAMMING STUDY





Technology is critical for libraries in the information age...  
...but success has less to do with  
digital words or the digital world  
& more to do with  
creating places that support  
human introspection and human interaction

FANEUIL BRANCH  
of the Boston Public Library  
PROGRAMMING STUDY



# CHILDREN'S SPACE — EARLY LEARNING PLACE



# READING ROOM — COMMUNITY LIVING ROOM



**FANEUL BRANCH**  
of the Boston Public Library  
**PROGRAMMING STUDY**



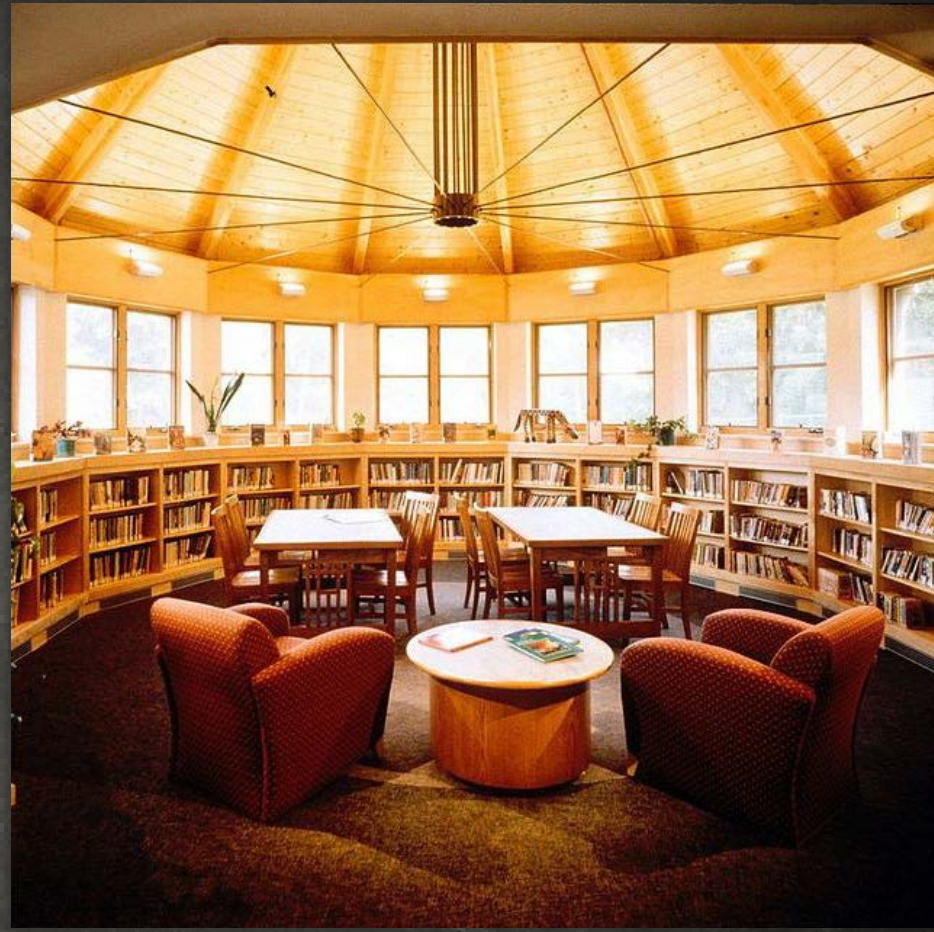
# READING ROOM — INFORMAL STUDY AMBIANCE



FANEUL BRANCH  
of the Boston Public Library  
PROGRAMMING STUDY



# COMFORTABLE SPACES FOR LIBRARY USERS



**FANEUIL BRANCH**  
of the Boston Public Library  
**PROGRAMMING STUDY**

Tappé Architects, Inc.



# LIBRARY RENEWAL PLANNING & DESIGN

Future Library = Space for People  
Events  
Collaboration  
Production  
Information  
Learning  
Interaction  
Experiences  
Technology  
Transformation  
“LET’S MEET @ THE LIBRARY”



# NEXT STEPS – ?

Garner all the Feedback

Incorporate Feedback into the Library Program

Develop Options for the Interior Layout

Next CAC meeting – to be scheduled in about 6 weeks



# YOUR THOUGHTS?

- Share them now
- Add them to the survey

FANEUIL BRANCH  
of the Boston Public Library  
PROGRAMMING STUDY

Tappé Architects, Inc.

