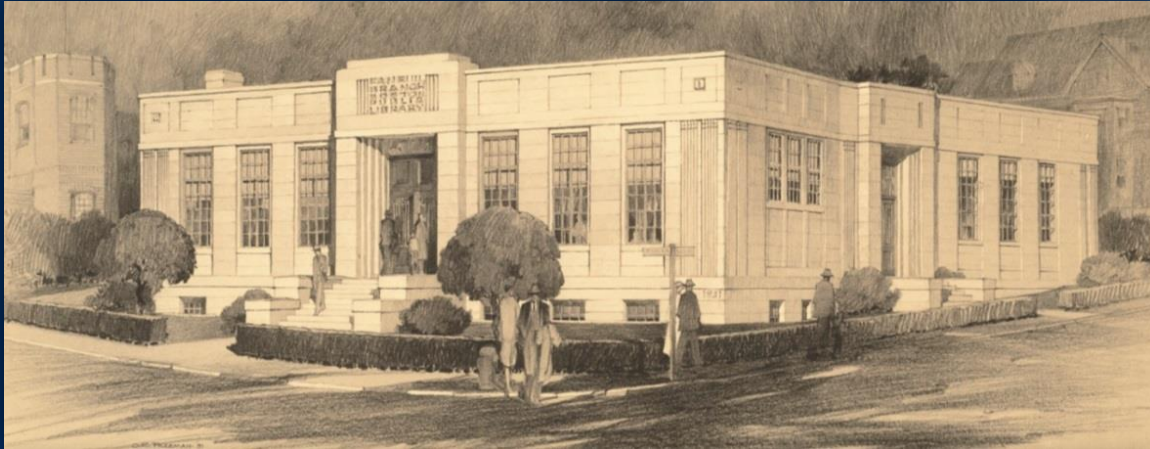


FANEUIL BRANCH OF THE BOSTON PUBLIC LIBRARY PROGRAMMING STUDY



FANEUIL BRANCH OF THE BOSTON PUBLIC LIBRARY PROGRAMMING STUDY

AGENDA

1. Review Project Progress
2. Present Initial Options Diagrams
3. Get Your Feedback on the Options



PROJECT PROCESS & PROGRESS REVIEW

GOAL:

Reach a preferred design option, through consensus, with input from the Community, BPL, PCMD & the Architect

COMMUNITY INPUT:

4 CAC Meetings -

1. Introductions, gather info
2. Review Draft Existing Conditions Report & Draft Program
3. Review Design Explorations of Scope Options
4. Present final report & preferred design option with cost estimate, discuss next steps



PROJECT PROCESS & PROGRESS REVIEW

PROCESS

Analyze Existing Facility &
Services

Develop Library Program

Develop Preliminary Designs
& Cost Estimates

SCHEDULE

CAC meetings about 6+
weeks apart

Complete the study
Spring 2015



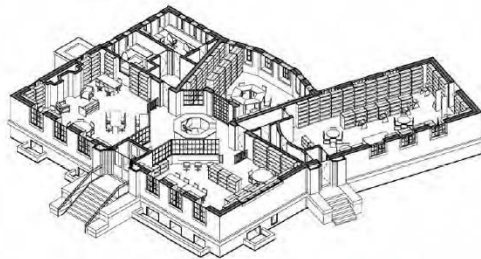
PROJECT PROCESS & PROGRESS REVIEW

BUILDING ASSESSMENT

Faneuil Branch Library Study
PCM Project No. 7043

Draft report for discussion purposes only – 12/11/2014

Faneuil Branch Library EXISTING CONDITIONS



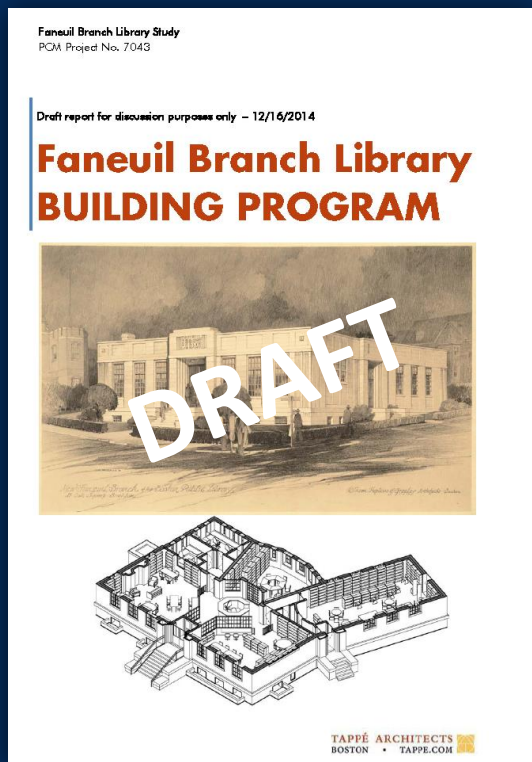
TAPPÉ ARCHITECTS
BOSTON • TAPPE.COM

- SITE & LANDSCAPE
- EXTERIOR ARCHITECTURAL CHARACTER
- INTERIOR ARCHITECTURAL CHARACTER
- ACCESSIBILITY
- BALANCING COLLECTIONS & SERVICE
- COMMUNITY MEETING
- OUTDATED OR INAPPROPRIATE BUILDING SYSTEMS
- ENVELOPE CONDITION ISSUES
- INTERIOR CONDITION ISSUES



PROJECT PROCESS & PROGRESS REVIEW

PRELIMINARY PROGRAMMING



BPL COMPASS Review +
BUILDING ANALYSIS +
YOUR INPUT =
LIBRARY BUILDING PROGRAM

Give a spatial interpretation
to the GOALS description of
library SERVICES & FACILITIES
from the BPL COMPASS

Not Complete
without Community Input



PROJECT PROCESS & PROGRESS REVIEW

PRELIMINARY PROGRAMMING

Faneuil Branch Library
PCM Project No. 7043

BUILDING PROGRAM
Program Summary (with Functions & Goals)

A. WELCOME ZONE

ENTRANCE & VESTIBULE

Functions Performed:
Scope Option 1, 2, & 3:
The primary function of Library Entrance is lobby for the library building and access to all entrance are not desirable.
The vestibule create a thermal buffer between the exterior weather.
Staff will plan displays and porticoes. Porticoes incorporate book theft detection gear.

Close Proximity To: Circulation Services
Distant From: Quiet reading area

CENTRAL SERVICE DESK

Functions Performed:
Scope Option 1, 2, & 3:
Efficiently handle transactions for the library including loan items and holds.
Includes the following table: 1) Library patron desk and self-checkout units, 2) Register business transactions including registration, p. credit & debit transactions, 4) Limited sort

Close Proximity To: Staff Workroom, Bus
Distant From: Quiet reading area

TAPPÉ ARCHITECTS
BOSTON • TAPPE.COM

Faneuil Branch Library
PCM Project No. 7043

BUILDING PROGRAM
Program Summary (with Functions & Goals)

B. COMMONS ZONE/SHARED SERVICES

COMMUNITY GATHERING SPACE

Functions Performed:
Scope Option 1 & 2:
Accommodate large group in either the transportation by setting up classroom configurations.
Scope Option 3:
This space can be used for a variety of presentations, audio-visual presentations, live performances, workshops, large group

Close Proximity To: Public restrooms
Distant From: Quiet reading area, bus

CASUAL SEATING & NETWORKING

Functions Performed:
Scope Option 1 & 2:
No scope.
Scope Option 3:
Informal seating area for casual reading. Accommodates at displays on the walls. Could also be used to accommodate an establish a "bookstore-cafe" place in the

Close Proximity To:
Distant From:

TAPPÉ ARCHITECTS
BOSTON • TAPPE.COM

Faneuil Branch Library
PCM Project No. 7043

BUILDING PROGRAM
Program Summary (with Functions & Goals)

C. ADULT SERVICES

INFORMATION/REFERENCE STATION

Functions Performed:
Scope Option 1, 2 & 3:
At the central desk, provide assistance in answer to questions asked by patrons, answer reference collection, provide reader advisory consulting with patrons at the desk and check-in the use of the online catalog, the library's information services.

Close Proximity To: Public computers, car
Distant From: Children's Services

ADULT FICTION/NON-FICTION COLLECTIONS

Functions Performed:
Scope Option 1, 2 & 3:
Contact the adult fiction and non-fiction collections.

Close Proximity To: Circulation Desk, Info
Distant From: Children's Area

TAPPÉ ARCHITECTS
BOSTON • TAPPE.COM

Faneuil Branch Library
PCM Project No. 7043

BUILDING PROGRAM
Program Summary (with Functions & Goals)

D. CHILDREN'S SERVICES

CHILDREN'S SERVICES - GENERAL

Functions Performed:
Scope Option 1, 2 & 3:
Staff provides assistance to children from age 0-12 given. The room should accommodate books, toys, and puppets for other educational toys. Be included in this area. There should be comfortable children of various ages.
Provides study space for homework assignments. Changing and temporary exhibit are displayed.

Close Proximity To: Public restrooms
Distant From: Information/Reference Desk

CHILDREN'S FICTION/NON-FICTION COLLECTIONS

Functions Performed:
Scope Option 1, 2 & 3:
Have user juvenile fiction/non-fiction book collections of materials.
Also includes the AV and Parenting collection.

Close Proximity To: Public Toilets, display
Distant From: Adult Collections, Quiet Area

TAPPÉ ARCHITECTS
BOSTON • TAPPE.COM

Faneuil Branch Library
PCM Project No. 7043

BUILDING PROGRAM
Program Summary (with Functions & Goals)

E. TEEN'S SERVICES

TEEN SERVICES - GENERAL

Functions Performed:
Scope Option 1, 2 & 3:
Outreach place that is uniquely suited to Teens. Provide computer environment configured to appeal to teen users.
Has bulletin boards for young adult oriented display.

Close Proximity To: Study spaces, Adult Non-Fiction
Distant From: Separate from Children's area, work

TEEN COLLECTIONS

Functions Performed:
Scope Option 1, 2 & 3:
Have YA fiction book collection for teen browsing. Have and display the Teen periodicals and magazine. Provide changing display of books of current interest. Display career information, display teen booklets.

Close Proximity To: Service Desk, Teen Seating
Distant From: NA

TAPPÉ ARCHITECTS
BOSTON • TAPPE.COM

Faneuil Branch Library
PCM Project No. 7043

BUILDING PROGRAM
Program Summary (with Functions & Goals)

F. ADMINISTRATION/SUPPORT

STAFF WORKROOM

	Size	Seats	Collection Size
Existing	161	0	0
Option 1	no change	—	—
Option 2	TED	—	—
Option 3	TED	—	—

Functions Performed:
Scope Option 1, 2 & 3:
Receipt and processing of library materials, weeding, sorting of materials for re-shelving, stock sorting, tracking patron registrations, processing interlibrary loans, processing of incoming and outgoing hold requests, notifying patrons of hold materials. Connecting patrons regarding overdue materials.
Storage of general office supplies.
Storage of flags/tablet PO out.
Planning for all library programs and events.

Close Proximity To: Central Services Desk, Circ. Supervisor's Office, Hold
Distant From: Public View.

BRANCH LIBRARIAN OFFICE

	Size	Seats	Collection Size
Existing	115	0	0
Option 1	no change	—	—
Option 2	TED	—	—
Option 3	TED	—	—

Functions Performed:
Scope Option 1, 2 & 3:
Private office space for the Branch Librarian.
Accommodate staff for patron consultations.

Close Proximity To: Other administrative space
Distant From: Study area

CHILDREN'S LIBRARIAN'S WORK AREA

	Size	Seats	Collection Size
Existing	0	0	0
Option 1	no change	—	—
Option 2	TED	—	—
Option 3	TED	—	—

Functions Performed:
Prepare materials for Children's programs and craft activities.
Maintain material inventory and store professional materials.
Provide Children's library staff with space to plan and prepare children's activities.
Have and display the visual components of the Teen print and AV collections.

Close Proximity To: Children's Services
Distant From: Adult Services

TAPPÉ ARCHITECTS
BOSTON • TAPPE.COM

Faneuil Branch Library
PCM Project No. 7043

BUILDING PROGRAM
Program Summary (with Functions & Goals)

G. ADMINISTRATION/SUPPORT

STAFF WORKROOM

	Size	Seats	Collection Size
Existing	161	0	0
Option 1	no change	—	—
Option 2	TED	—	—
Option 3	TED	—	—

Functions Performed:
Scope Option 1, 2 & 3:
Receipt and processing of library materials, weeding, sorting of materials for re-shelving, stock sorting, tracking patron registrations, processing interlibrary loans, processing of incoming and outgoing hold requests, notifying patrons of hold materials. Connecting patrons regarding overdue materials.
Storage of general office supplies.
Storage of flags/tablet PO out.
Planning for all library programs and events.

Close Proximity To: Central Services Desk, Circ. Supervisor's Office, Hold
Distant From: Public View.

BRANCH LIBRARIAN OFFICE

	Size	Seats	Collection Size
Existing	115	0	0
Option 1	no change	—	—
Option 2	TED	—	—
Option 3	TED	—	—

Functions Performed:
Scope Option 1, 2 & 3:
Private office space for the Branch Librarian.
Accommodate staff for patron consultations.

Close Proximity To: Other administrative space
Distant From: Study area

CHILDREN'S LIBRARIAN'S WORK AREA

	Size	Seats	Collection Size
Existing	0	0	0
Option 1	no change	—	—
Option 2	TED	—	—
Option 3	TED	—	—

Functions Performed:
Scope Option 1, 2 & 3:
Private office space for the Branch Librarian.
Accommodate staff for patron consultations.

Close Proximity To: Other administrative space
Distant From: Study area

CHILDREN'S LIBRARIAN'S WORK AREA

	Size	Seats	Collection Size
Existing	0	0	0
Option 1	no change	—	—
Option 2	TED	—	—
Option 3	TED	—	—

Functions Performed:
Scope Option 1, 2 & 3:
Private office space for the Branch Librarian.
Accommodate staff for patron consultations.

Close Proximity To: Other administrative space
Distant From: Study area

CHILDREN'S LIBRARIAN'S WORK AREA

	Size	Seats	Collection Size
Existing	0	0	0
Option 1	no change	—	—
Option 2	TED	—	—
Option 3	TED	—	—

Functions Performed:
Scope Option 1, 2 & 3:
Private office space for the Branch Librarian.
Accommodate staff for patron consultations.

Close Proximity To: Other administrative space
Distant From: Study area

CHILDREN'S LIBRARIAN'S WORK AREA

	Size	Seats	Collection Size
Existing	0	0	0
Option 1	no change	—	—
Option 2	TED	—	—
Option 3	TED	—	—

Functions Performed:
Scope Option 1, 2 & 3:
Private office space for the Branch Librarian.
Accommodate staff for patron consultations.

Close Proximity To: Other administrative space
Distant From: Study area

CHILDREN'S LIBRARIAN'S WORK AREA

	Size	Seats	Collection Size
Existing	0	0	0
Option 1	no change	—	—
Option 2	TED	—	—
Option 3	TED	—	—

Functions Performed:
Scope Option 1, 2 & 3:
Private office space for the Branch Librarian.
Accommodate staff for patron consultations.

Close Proximity To: Other administrative space
Distant From: Study area

CHILDREN'S LIBRARIAN'S WORK AREA

	Size	Seats	Collection Size
Existing	0	0	0
Option 1	no change	—	—
Option 2	TED	—	—
Option 3	TED	—	—

Functions Performed:
Scope Option 1, 2 & 3:
Private office space for the Branch Librarian.
Accommodate staff for patron consultations.

Close Proximity To: Other administrative space
Distant From: Study area

CHILDREN'S LIBRARIAN'S WORK AREA

	Size	Seats	Collection Size
Existing	0	0	0
Option 1	no change	—	—
Option 2	TED	—	—
Option 3	TED	—	—

Functions Performed:
Scope Option 1, 2 & 3:
Private office space for the Branch Librarian.
Accommodate staff for patron consultations.

Close Proximity To: Other administrative space
Distant From: Study area

CHILDREN'S LIBRARIAN'S WORK AREA

	Size	Seats	Collection Size
Existing	0	0	0
Option 1	no change	—	—
Option 2	TED	—	—
Option 3	TED	—	—

Functions Performed:
Scope Option 1, 2 & 3:
Private office space for the Branch Librarian.
Accommodate staff for patron consultations.

Close Proximity To: Other administrative space
Distant From: Study area

CHILDREN'S LIBRARIAN'S WORK AREA

	Size	Seats	Collection Size
Existing	0	0	0
Option 1	no change	—	—
Option 2	TED	—	—
Option 3	TED	—	—

Functions Performed:
Scope Option 1, 2 & 3:
Private office space for the Branch Librarian.
Accommodate staff for patron consultations.

Close Proximity To: Other administrative space
Distant From: Study area

CHILDREN'S LIBRARIAN'S WORK AREA

	Size	Seats	Collection Size
Existing	0	0	0
Option 1	no change	—	—
Option 2	TED	—	—
Option 3	TED	—	—

Functions Performed:
Scope Option 1, 2 & 3:
Private office space for the Branch Librarian.
Accommodate staff for patron consultations.

Close Proximity To: Other administrative space
Distant From: Study area

CHILDREN'S LIBRARIAN'S WORK AREA

	Size	Seats	Collection Size
Existing	0	0	0
Option 1	no change	—	—
Option 2	TED	—	—
Option 3	TED	—	—

Functions Performed:
Scope Option 1, 2 & 3:
Private office space for the Branch Librarian.
Accommodate staff for patron consultations.

Close Proximity To: Other administrative space
Distant From: Study area

CHILDREN'S LIBRARIAN'S WORK AREA

	Size	Seats	Collection Size
Existing	0	0	0
Option 1	no change	—	—
Option 2	TED	—	—
Option 3	TED	—	—

Functions Performed:
Scope Option 1, 2 & 3:
Private office space for the Branch Librarian.
Accommodate staff for patron consultations.

Close Proximity To: Other administrative space
Distant From: Study area

CHILDREN'S LIBRARIAN'S WORK AREA

	Size	Seats	Collection Size
Existing	0	0	0
Option 1	no change	—	—
Option 2	TED	—	—
Option 3	TED	—	—

Functions Performed:
Scope Option 1, 2 & 3:
Private office space for the Branch Librarian.
Accommodate staff for patron consultations.

Close Proximity To: Other administrative space
Distant From: Study area

CHILDREN'S LIBRARIAN'S WORK AREA

	Size	Seats	Collection Size
Existing	0	0	0
Option 1	no change	—	—
Option 2	TED	—	—
Option 3	TED	—	—

Functions Performed:
Scope Option 1, 2 & 3:
Private office space for the Branch Librarian.
Accommodate staff for patron consultations.

Close Proximity To: Other administrative space
Distant From: Study area

CHILDREN'S LIBRARIAN'S WORK AREA

	Size	Seats	Collection Size
Existing	0	0	0
Option 1	no change	—	—
Option 2	TED	—	—
Option 3	TED	—	—

Functions Performed:
Scope Option 1, 2 & 3:
Private office space for the Branch Librarian.
Accommodate staff for patron consultations.

Close Proximity To: Other administrative space
Distant From: Study area

CHILDREN'S LIBRARIAN'S WORK AREA

	Size	Seats	Collection Size
Existing	0	0	0
Option 1	no change	—	—
Option 2	TED	—	—
Option 3	TED	—	—

Functions Performed:
Scope Option 1, 2 & 3:
Private office space for the Branch Librarian.
Accommodate staff for patron consultations.

Close Proximity To: Other administrative space
Distant From: Study area

CHILDREN'S LIBRARIAN'S WORK AREA

	Size	Seats	Collection Size
Existing	0	0	0
Option 1	no change	—	—
Option 2	TED	—	—
Option 3	TED	—	—

Functions Performed:
Scope Option 1, 2 & 3:
Private office space for the Branch Librarian.
Accommodate staff for patron consultations.

Close Proximity To: Other administrative space
Distant From: Study area

CHILDREN'S LIBRARIAN'S WORK AREA

	Size	Seats	Collection Size
Existing	0	0	0
Option 1	no change	—	—
Option 2	TED	—	—
Option 3	TED	—	—

Functions Performed:
Scope Option 1, 2 & 3:
Private office space for the Branch Librarian.
Accommodate staff for patron consultations.

Close Proximity To: Other administrative space
Distant From: Study area

CHILDREN'S LIBRARIAN'S WORK AREA

	Size	Seats	Collection Size
Existing	0	0	0
Option 1	no change	—	—
Option 2	TED	—	—
Option 3	TED	—	—

Functions Performed:
Scope Option 1, 2 & 3:
Private office space for the Branch Librarian.
Accommodate staff for patron consultations.

Close Proximity To: Other administrative space
Distant From: Study area

CHILDREN'S LIBRARIAN'S WORK AREA

	Size	Seats	Collection Size
Existing	0	0	0
Option 1	no change	—	—
Option 2	TED	—	—
Option 3	TED	—	—

Functions Performed:
Scope Option 1, 2 & 3:
Private office space for the Branch Librarian.
Accommodate staff for patron consultations.

Close Proximity To: Other administrative space
Distant From: Study area

CHILDREN'S LIBRARIAN'S WORK AREA

	Size	Seats	Collection Size
Existing	0	0	0
Option 1	no change	—	—
Option 2	TED	—	—
Option 3	TED	—	—

Functions Performed:
Scope Option 1, 2 & 3:
Private office space for the Branch Librarian.
Accommodate staff for patron consultations.

Close Proximity To: Other administrative space
Distant From: Study area

CHILDREN'S LIBRARIAN'S WORK AREA

	Size	Seats	Collection Size
Existing	0	0	0
Option 1	no change	—	—
Option 2	TED	—	—
Option 3	TED	—	—

Functions Performed:
Scope Option 1, 2 & 3:
Private office space for the Branch Librarian.
Accommodate staff for patron consultations.

Close Proximity To: Other administrative space
Distant From: Study area

CHILDREN'S LIBRARIAN'S WORK AREA

	Size	Seats	Collection Size
Existing	0	0	0
Option 1	no change	—	—
Option 2	TED	—	—
Option 3	TED	—	—

Functions Performed:
Scope Option 1, 2 & 3:
Private office space for the Branch Librarian.
Accommodate staff for patron consultations.

Close Proximity To: Other administrative space
Distant From: Study area

CHILDREN'S LIBRARIAN'S WORK AREA

	Size	Seats	Collection Size
Existing	0	0	0
Option 1	no change	—	—
Option 2	TED	—	—
Option 3	TED	—	—

Functions Performed:
Scope Option 1, 2 & 3:
Private office space for the Branch Librarian.
Accommodate staff for patron consultations.

Close Proximity To: Other administrative space
Distant From: Study area

CHILDREN'S LIBRARIAN'S WORK AREA

	Size	Seats	Collection Size
Existing	0	0	0
Option 1	no change	—	—
Option 2	TED	—	—
Option 3	TED	—	—

Functions Performed:
Scope Option 1, 2 & 3:
Private office space for the Branch Librarian.
Accommodate staff for patron consultations.

Close Proximity To: Other administrative space
Distant From: Study area

CHILDREN'S LIBRARIAN'S WORK AREA

	Size	Seats	Collection Size
Existing	0	0	0
Option 1	no change	—	—
Option 2	TED	—	—
Option 3	TED	—	—

Functions Performed:
Scope Option 1, 2 & 3:
Private office space for the Branch Librarian.
Accommodate staff for patron consultations.

Close Proximity To: Other administrative space
Distant From: Study area

CHILDREN'S LIBRARIAN'S WORK AREA

	Size	Seats	Collection Size
Existing	0	0	0
Option 1	no change	—	—
Option 2	TED	—	—
Option 3	TED	—	—

Functions Performed:
Scope Option 1, 2 & 3:
Private office space for the Branch Librarian.
Accommodate staff for patron consultations.

Close Proximity To: Other administrative space
Distant From: Study area

CHILDREN'S LIBRARIAN'S WORK AREA

	Size	Seats	Collection Size
Existing	0	0	0
Option 1	no change	—	—
Option 2	TED	—	—
Option 3	TED	—	—

Functions Performed:
Scope Option 1, 2 & 3:
Private office space for the Branch Librarian.
Accommodate staff for patron consultations.

Close Proximity To: Other administrative space
Distant From: Study area

CHILDREN'S LIBRARIAN'S WORK AREA

	Size	Seats	Collection Size
Existing	0	0	0
Option 1	no change	—	—
Option 2	TED	—	—
Option 3	TED	—	—

Functions Performed:
Scope Option 1, 2 & 3:
Private office space for the Branch Librarian.
Accommodate staff for patron consultations.

Close Proximity To: Other administrative space
Distant From: Study area

CHILDREN'S LIBRARIAN'S WORK AREA

	Size	Seats	Collection Size
Existing	0	0	0
Option 1	no change	—	—
Option 2	TED	—	—
Option 3	TED	—	—

Functions Performed:
Scope Option 1, 2 & 3:
Private office space for the Branch Librarian.
Accommodate staff for patron consultations.

Close Proximity To: Other administrative space
Distant From: Study area

CHILDREN'S LIBRARIAN'S WORK AREA

	Size	Seats	Collection Size
Existing	0	0	0
Option 1	no change	—	—
Option 2	TED	—	

PROJECT PROCESS & PROGRESS REVIEW

PRELIMINARY PROGRAMMING – SCOPE OPTIONS

Scope 1

ADA Accessibility &
Basic Systems Upgrades

Scope 2

Accessibility, System
Upgrades + Moderate
Expansion

Scope 3

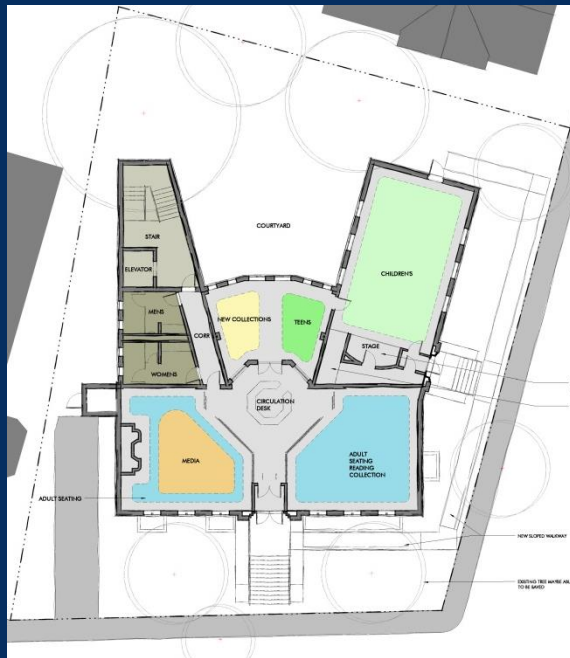
Accessibility, Maintenance +
Comprehensive Improvements/
Expansion



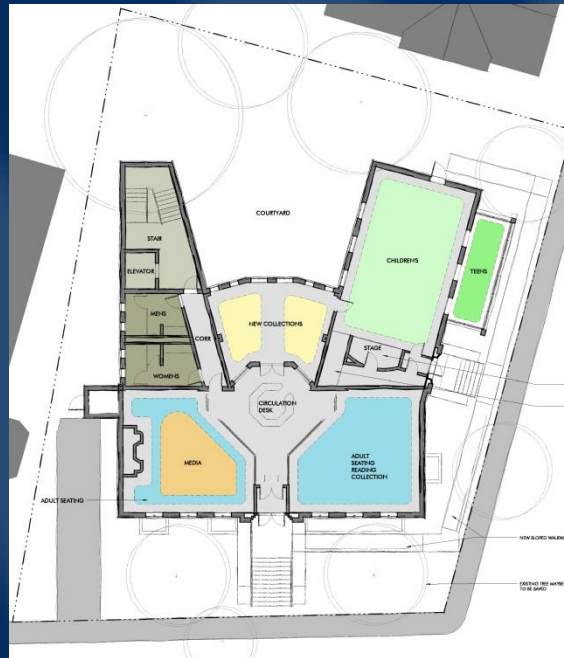
PROJECT PROCESS & PROGRESS REVIEW

PRELIMINARY DESIGN OPTIONS

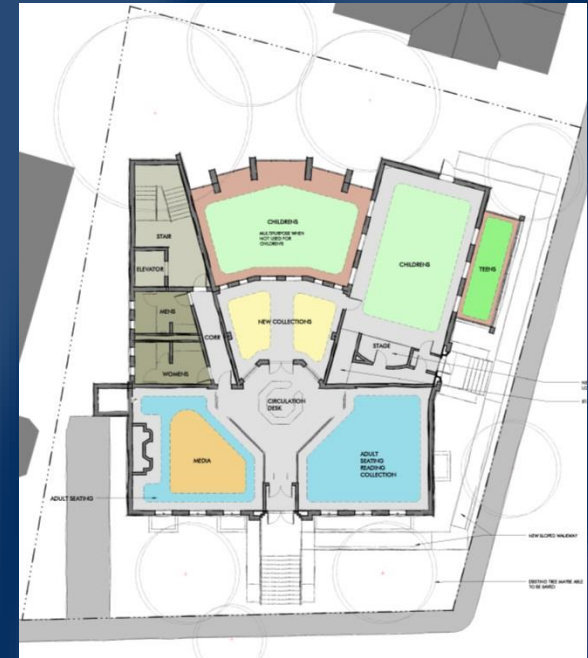
Scope 1 Light Touch



Scope 2 Moderate Intervention



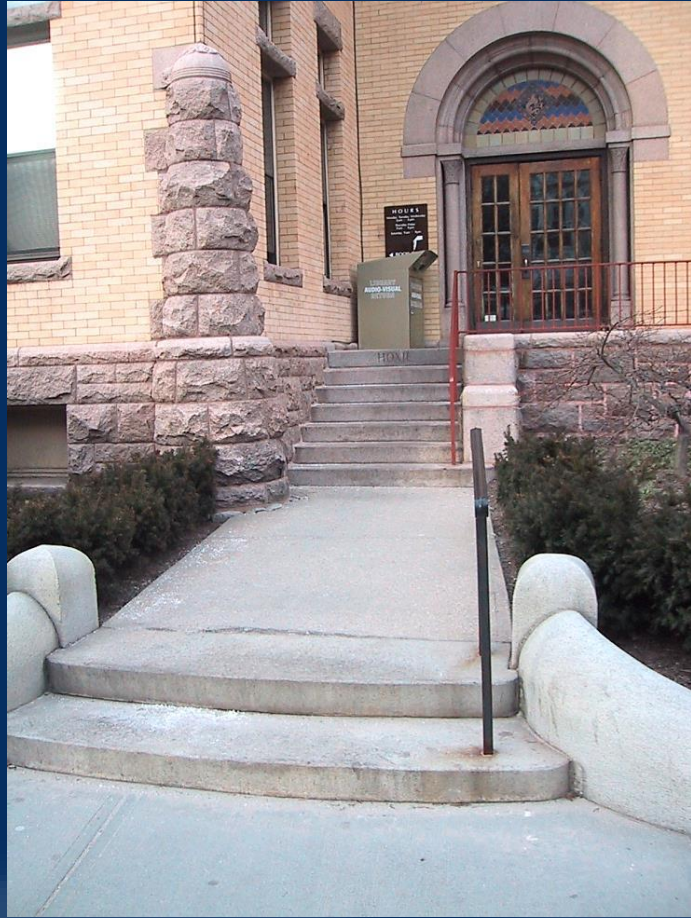
Scope 3 Major Intervention



PROJECT PROCESS & PROGRESS REVIEW

PRELIMINARY DESIGN OPTIONS

Exterior Accessibility Case Study



Westerly Library, Westerly, RI (before accessibility upgrade)



PROJECT PROCESS & PROGRESS REVIEW

PRELIMINARY DESIGN OPTIONS

Exterior Accessibility Case Study



Westerly Library, Westerly, RI (after accessibility upgrade)



PROJECT PROCESS & PROGRESS REVIEW

PRELIMINARY DESIGN OPTIONS

Exterior Accessibility Case Study



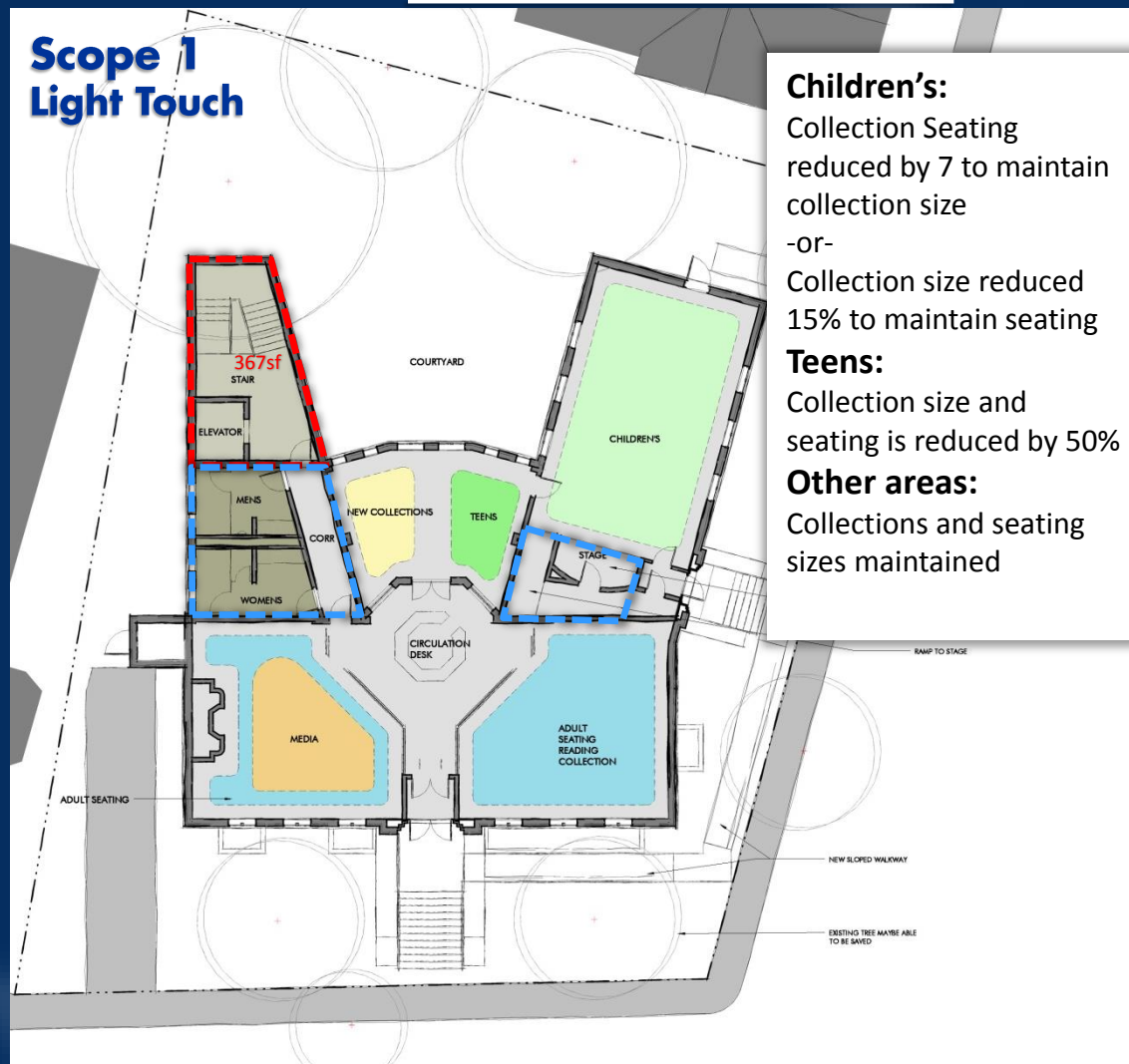
Westerly Library, Westerly, RI (after accessibility upgrade)



PROJECT PROCESS & PROGRESS REVIEW

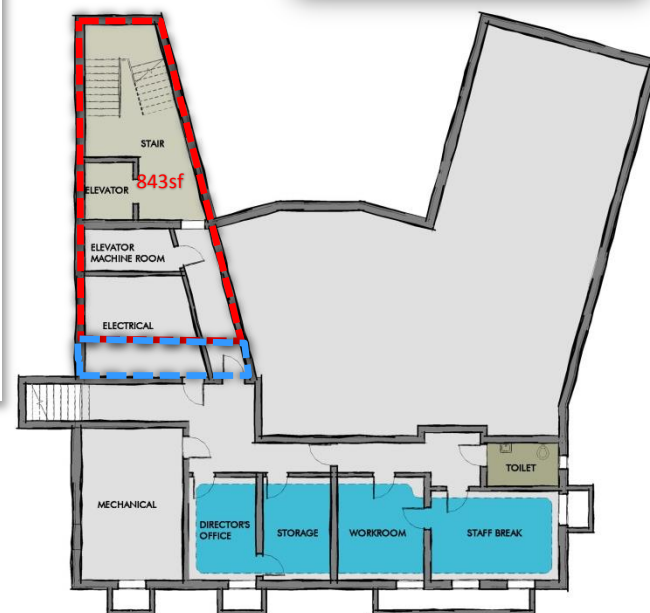
PRELIMINARY DESIGN OPTIONS

Scope 1 Light Touch



PROGRAM LEGEND

	NEW VERTICAL CIRCULATION
	BATHROOMS
	NEW PROGRAM SPACES
	ADULT SEATING / COLLECTION
	MEDIA
	NEW BOOKS
	SMALL GROUP STUDY
	CHILDREN'S
	TEENS
	STAFF



significant alteration
 addition

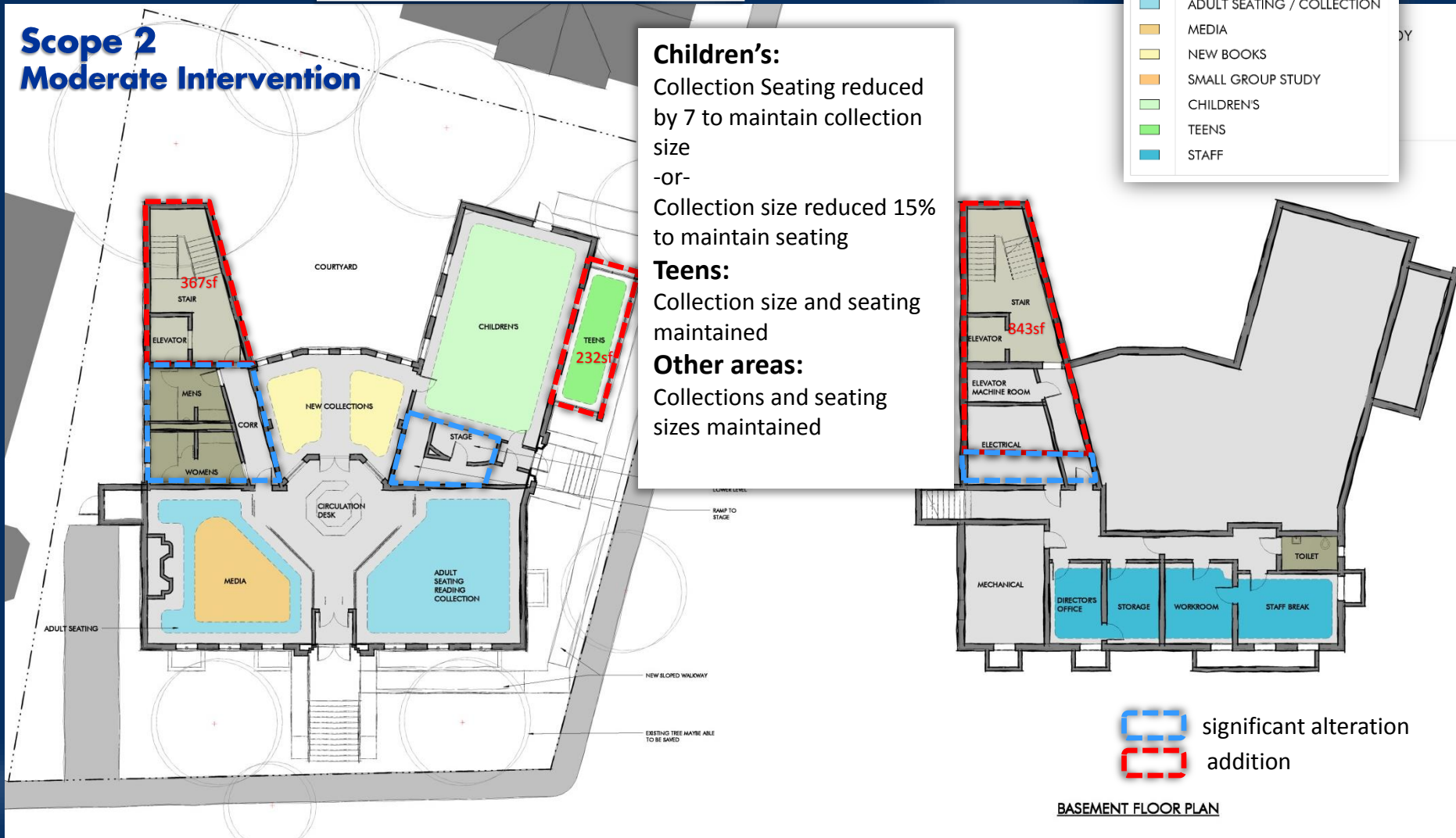
BASEMENT FLOOR PLAN



PROJECT PROCESS & PROGRESS REVIEW

PRELIMINARY DESIGN OPTIONS

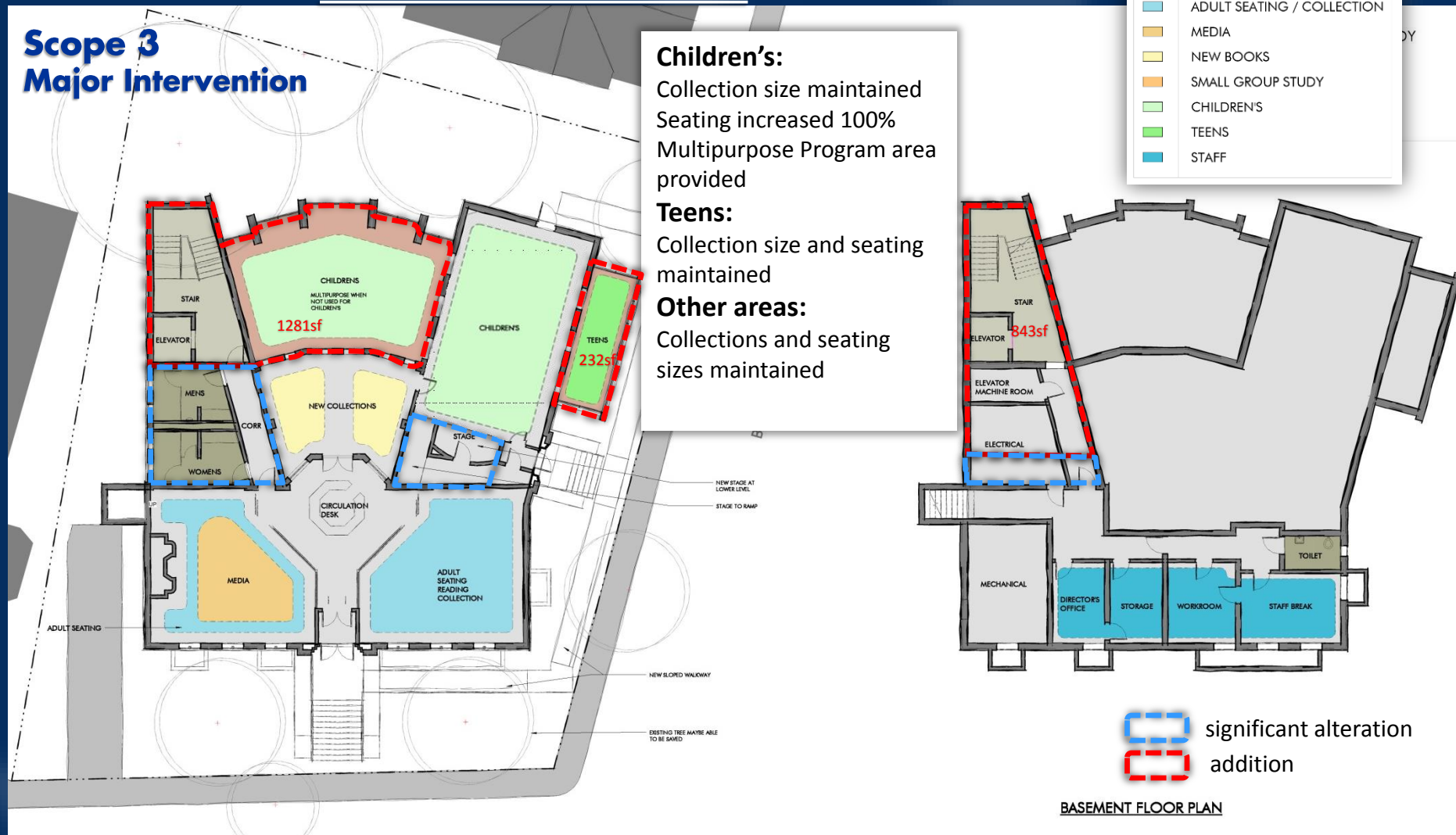
Scope 2 Moderate Intervention



PROJECT PROCESS & PROGRESS REVIEW

PRELIMINARY DESIGN OPTIONS

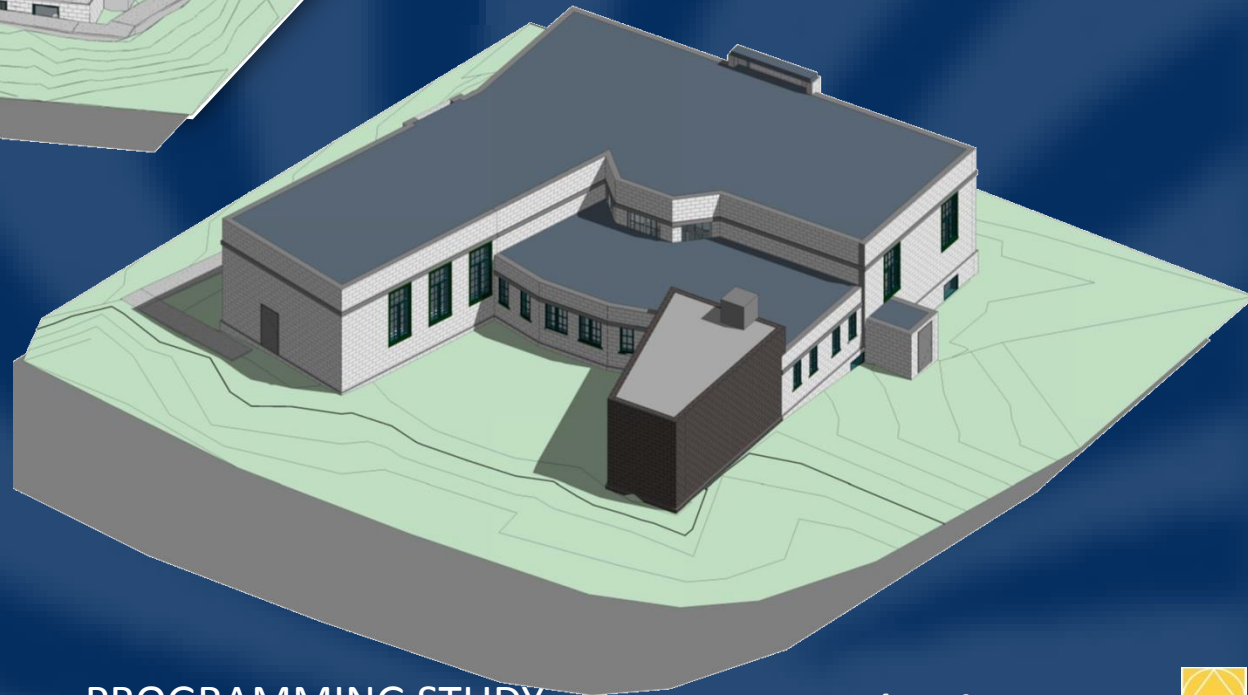
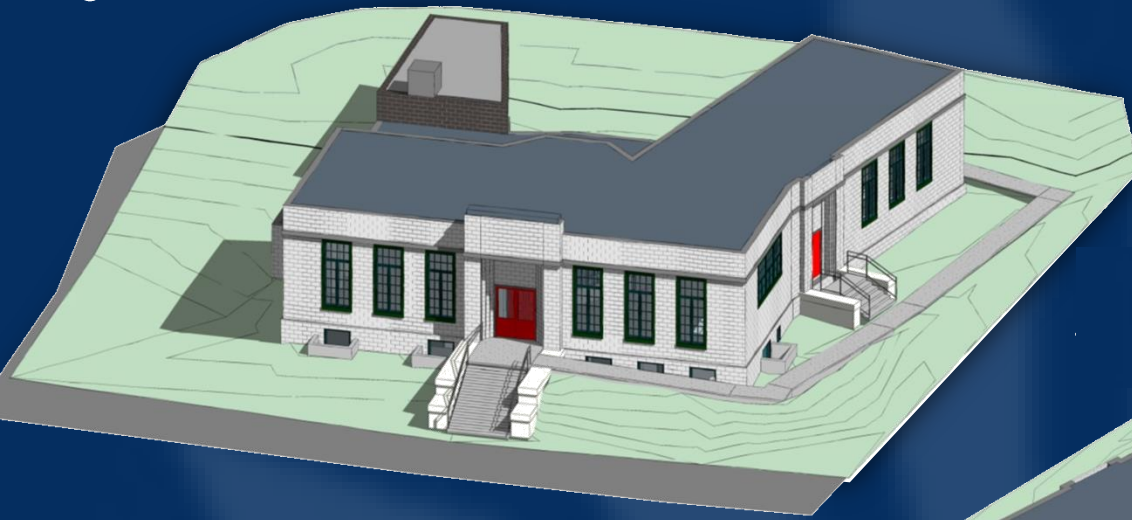
Scope 3 Major Intervention



PROJECT PROCESS & PROGRESS REVIEW

PRELIMINARY DESIGN OPTIONS

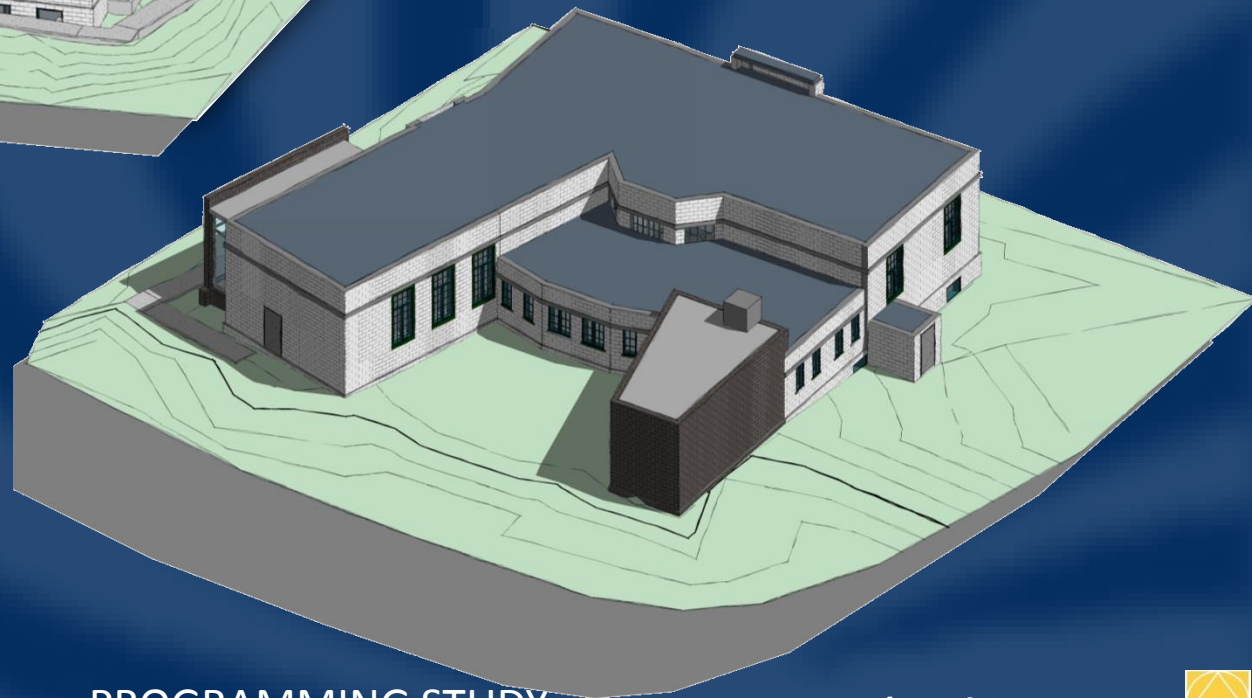
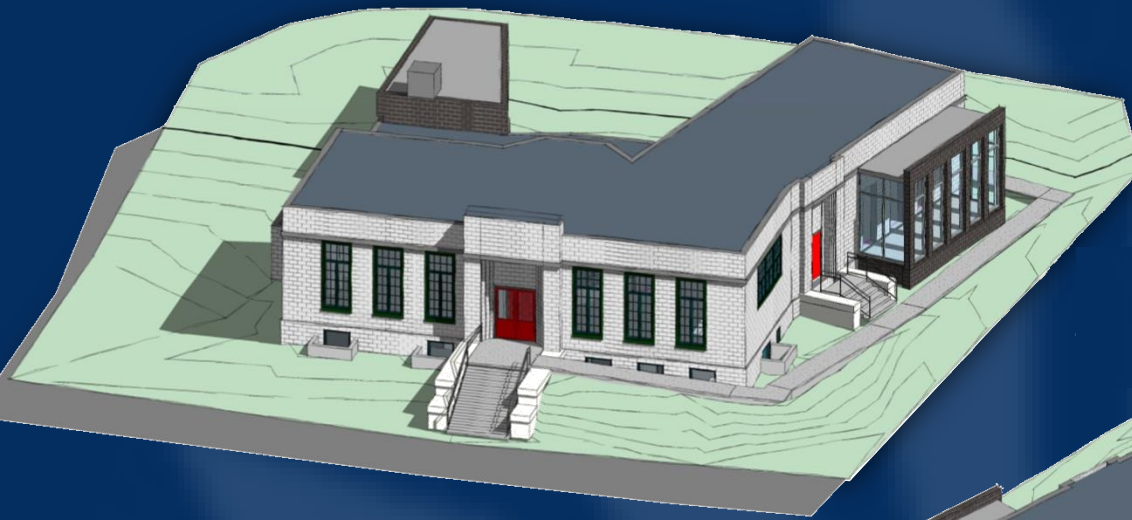
Scope 1
Light Touch



PROJECT PROCESS & PROGRESS REVIEW

PRELIMINARY DESIGN OPTIONS

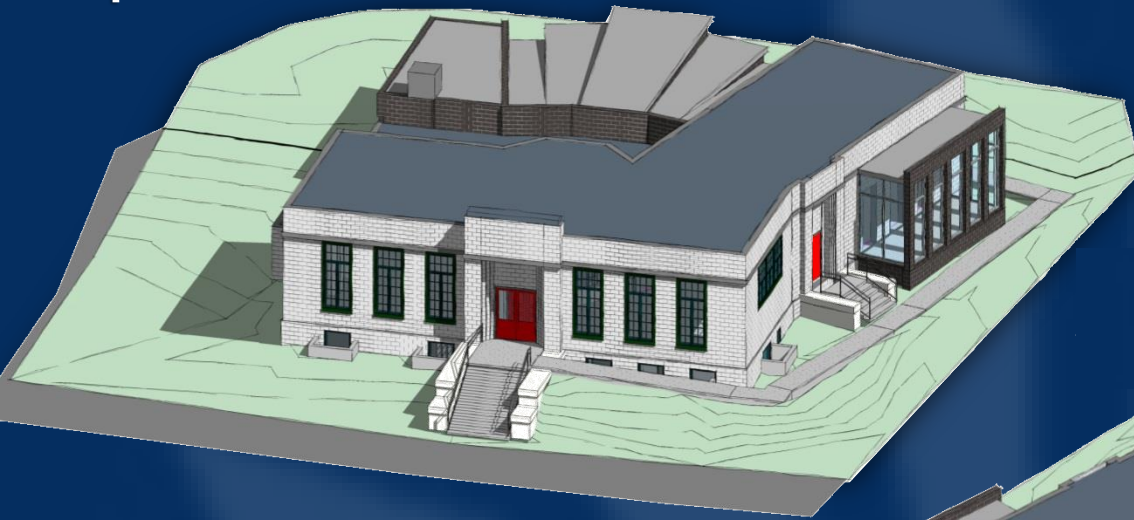
Scope 2 Moderate Intervention



PROJECT PROCESS & PROGRESS REVIEW

PRELIMINARY DESIGN OPTIONS

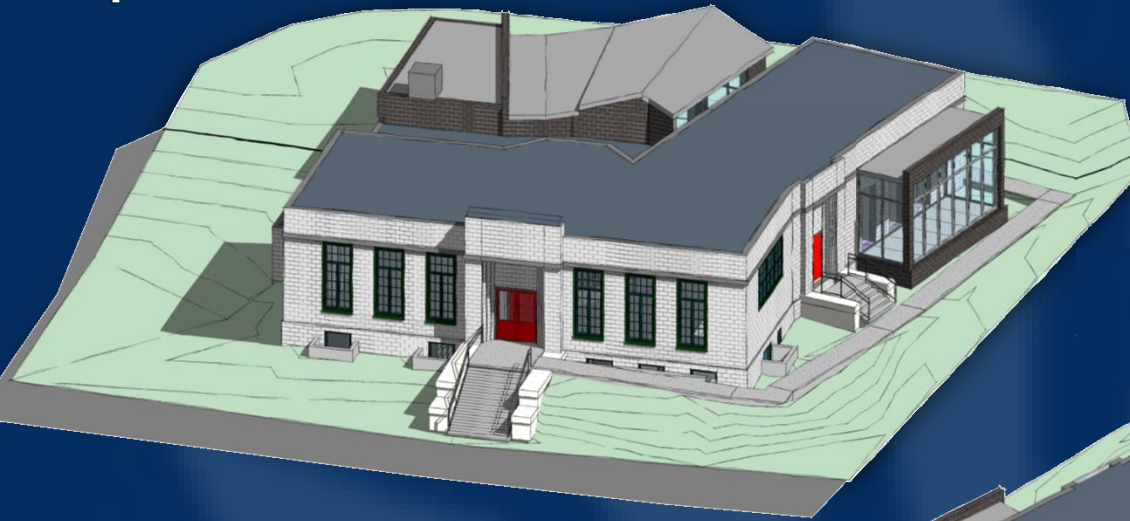
Scope 3 Major Intervention



PROJECT PROCESS & PROGRESS REVIEW

PRELIMINARY DESIGN OPTIONS

Scope 3 Major Intervention



NEXT STEPS –

Incorporate Tonight's Feedback into the Library Design Concept

Develop the Interior Layout

Next CAC meeting – to be scheduled in about 6 weeks

- review of the 3 updated design options
- preliminary cost estimates

Final Report – after Next CAC meeting

