



ADAMS STREET BRANCH LIBRARY

DESIGN PHASE

CITY OF BOSTON



MARTIN J. WALSH, MAYOR
BOSTON PUBLIC LIBRARY AND PUBLIC FACILITIES DEPARTMENT

DAVID LEONARD, PRESIDENT, BOSTON PUBLIC LIBRARY
PATRICK I. BROPHY, CHIEF OF OPERATIONS, CITY OF BOSTON

PUBLIC PRESENTATION - SEPTEMBER 25, 2018

AGENDA

1.0 INTRODUCTION

2.0 SCHEDULE

3.0 LIBRARY

4.0 GARDENS

PROJECT TEAM

MAYOR'S OFFICE:

*PATRICK BROPHY, CHIEF OF OPERATIONS
NORA DOHERTY, SPECIAL ASSISTANT*

CITY OF BOSTON PUBLIC FACILITIES DEPARTMENT:

*PATRICIA M. LYONS, DIRECTOR
TOM LEAHY, ASSISTANT DIRECTOR
JAMES MCGAFFIGAN, PROJECT MANAGER
ALISTAIR LUCKS, STAFF ARCHITECT*

BOSTON PUBLIC LIBRARY:

*DAVID LEONARD, PRESIDENT
EAMON SHELTON, DIRECTOR OF OPERATIONS
PRISCILLA FOLEY, DIRECTOR OF NEIGHBORHOOD SERVICES
LAURA IRMSCHER, CHIEF OF COLLECTIONS
ALISON FORD, MAJOR PROJECTS PROGRAM MANAGER
MICHAEL COLFORD, DIRECTOR OF LIBRARY SERVICES
LISSA SCHWAB, MAJOR PROJECTS COORDINATOR*

MAYOR'S OFFICE OF NEIGHBORHOOD SERVICES:

PATRICK FANDEL, DORCHESTER LIAISON

OFFICE OF BUDGET MANAGEMENT:

ERA KAPLAN, MANAGEMENT ANALYST

PROJECT CONSULTANTS:

ARCHITECT:

NADAAA INC.

STRUCTURE:

SOUZA, TRUE & PARTNERS, INC.

MEP:

GARCIA, GALUSKA & DESOUSA, INC.

CIVIL ENGINEER:

BSC GROUP

LANDSCAPE:

GROUND

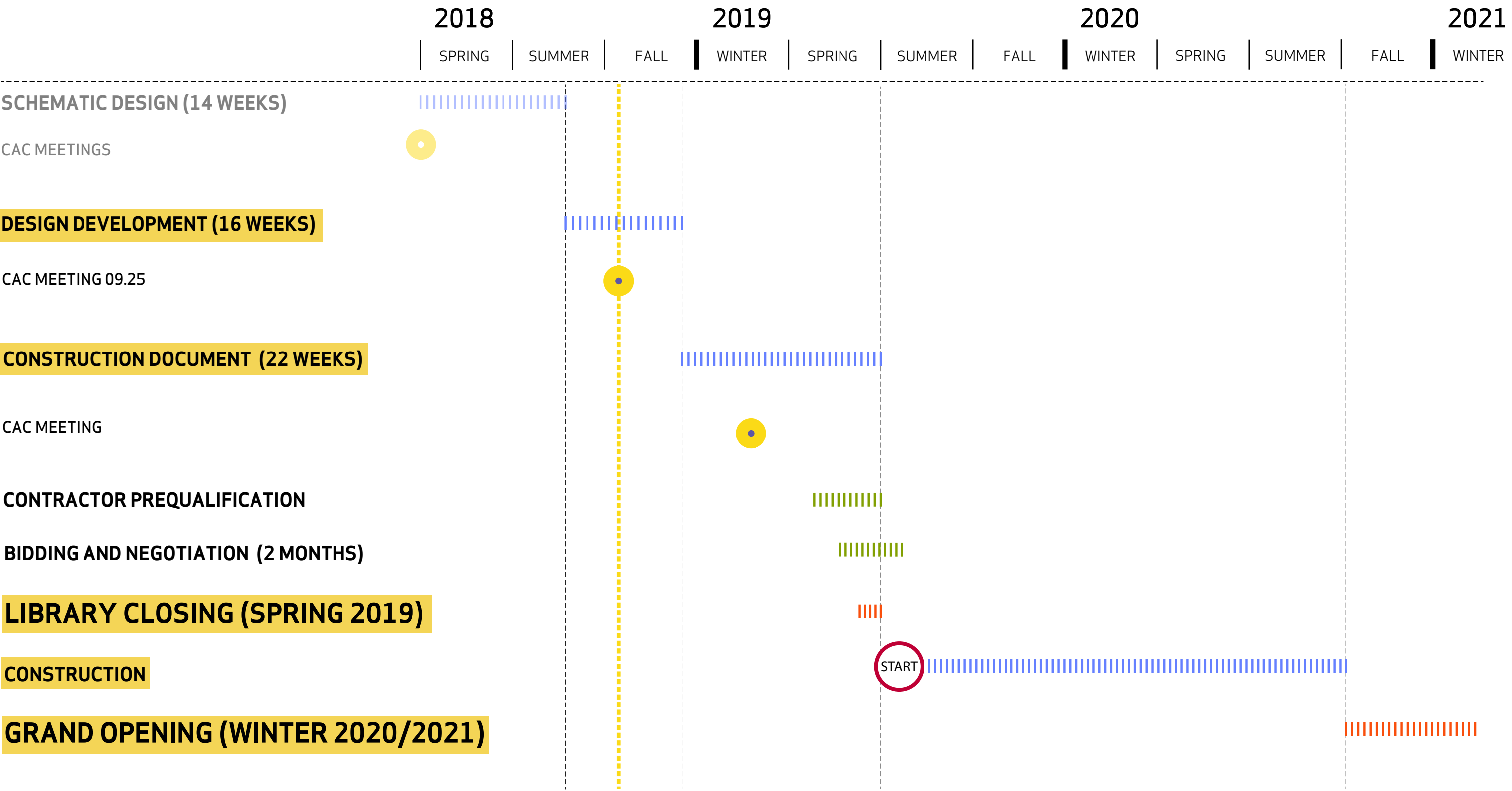
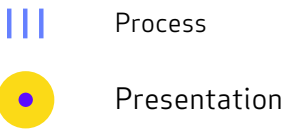
CODE:

KEVIN S. HASTINGS, P.E., LEED AP

COST CONSULTING:

PM&C

ADAMS STREET BRANCH LIBRARY : DESIGN SCHEDULE





BPL COMPASS: STRATEGIC PLAN

- User centered institution
- Community gathering
- Special collections
- Center of knowledge
- Children & teens
- Access & innovation
- Sustainable organization
- Fun

ADAMS STREET: SELECT PROJECT GOALS*

1. **IMPROVED SERVICE** VIA A SINGLE FLOOR BUILDING
2. **SENSITIVITY** TO BUDGET, SCHEDULE & COMMUNITY LOGISTICS
3. **VISIBILITY**/ SECURE SIGHT LINES WITHIN LIBRARY
4. CAPTURING **OUTDOOR SPACE** / OUTDOOR PROGRAM
5. **TRANSPARENCY** AND INCLUSIVITY (ABILITY TO SEE ACTIVITIES OF THE LIBRARY FROM THE EXTERIOR)
6. **ADJACENCIES** THAT SUPPORT BPL PROGRAMS AND GOALS
7. APPROPRIATE **ACOUSTICS**
8. **AMENITY SPACES**: COMMUNITY ROOM, FAMILY SPACE
9. COMPATIBILITY WITH **URBAN CONTEXT**
10. ACCOMMODATE NEW **PROGRAM** ELEMENTS
11. **SUSTAINABILITY** THROUGH DAYLIGHTING
12. UPGRADE **TECHNOLOGY** AND ADAPTABILITY OF SYSTEMS FOR FUTURE TECHNOLOGY

* OUTCOMES OF SURVEY , WORKING GROUP MEETINGS AND CAC MEETINGS

PROGRAM

ADAMS STREET BRANCH LIBRARY

PROGRAM SUMMARY

TOTAL NET: **12,966 SF**
TOTAL GROSS: **13,900 SF**
TOTAL EXISTING: 7,200 SF

ENTRANCE ZONE

VESTIBULE
LOBBY
BORROWER SERVICE DESK
SELF PICK-UP HOLDS
SELF CHECKOUT KIOSK
FRIENDS BOOK SALE SHELF
BOOK DROP OFF
STROLLER PARKING

1,047 SF

ADULT SECTION

ADULT COLLECTION
ADULT SEATING AREA
ADULT COMPUTER
ADULT LIBRARIAN DESK
IMMIGRATION INFORMATION
PRINT STATION
COMPUTER CATALOG STATION

3,086 SF

CHILDREN'S SECTION

CHILDREN'S COLLECTION
CHILDREN'S AREA
CHILDREN'S COMPUTER
CHILDREN'S LIBRARIAN DESK
CHILDREN'S BATHROOM
CHILDREN'S STORAGE
TWEEN SPACE

3,081 SF

TEEN SECTION

TEEN COLLECTION
TEEN SEATING AREA
TEEN COMPUTERS
STAFF ACCESS POINT
COMPUTER CATALOG STATION

1,535 SF

SHARED SERVICE

COMMUNITY ROOM
MEETING ROOMS
LAPTOP AREA
COPY/PRINT SERVICE
CASUAL SEATING
PUBLIC RESTROOMS
KITCHENETTE
FURNITURE STORAGE
MUSIC ROOM

2,339 SF

ADMINISTRATION

BRANCH LIBRARIAN'S OFFICE
STAFF BREAK ROOM
STAFF RESTROOM
STAFF WORKROOM

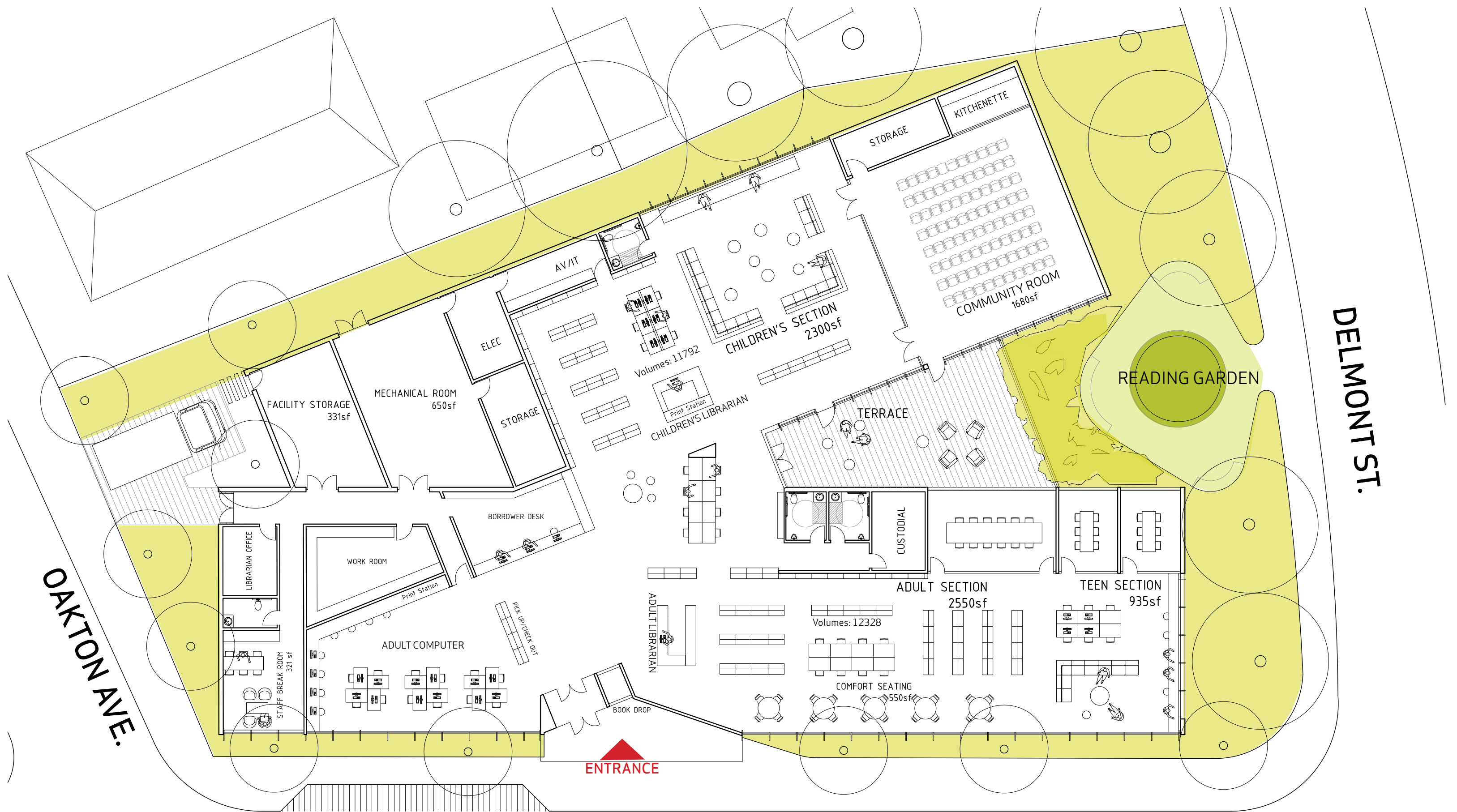
809 SF

BUILDING SERVICES

MECHANICAL ROOM
ELECTRICAL ROOMS
IT/AV ROOM
GENERAL STORAGE
FACILITIES STORAGE
CUSTODIAL OFFICE
CUSTODIAL CLOSET

791 SF

PLAN LAYOUT

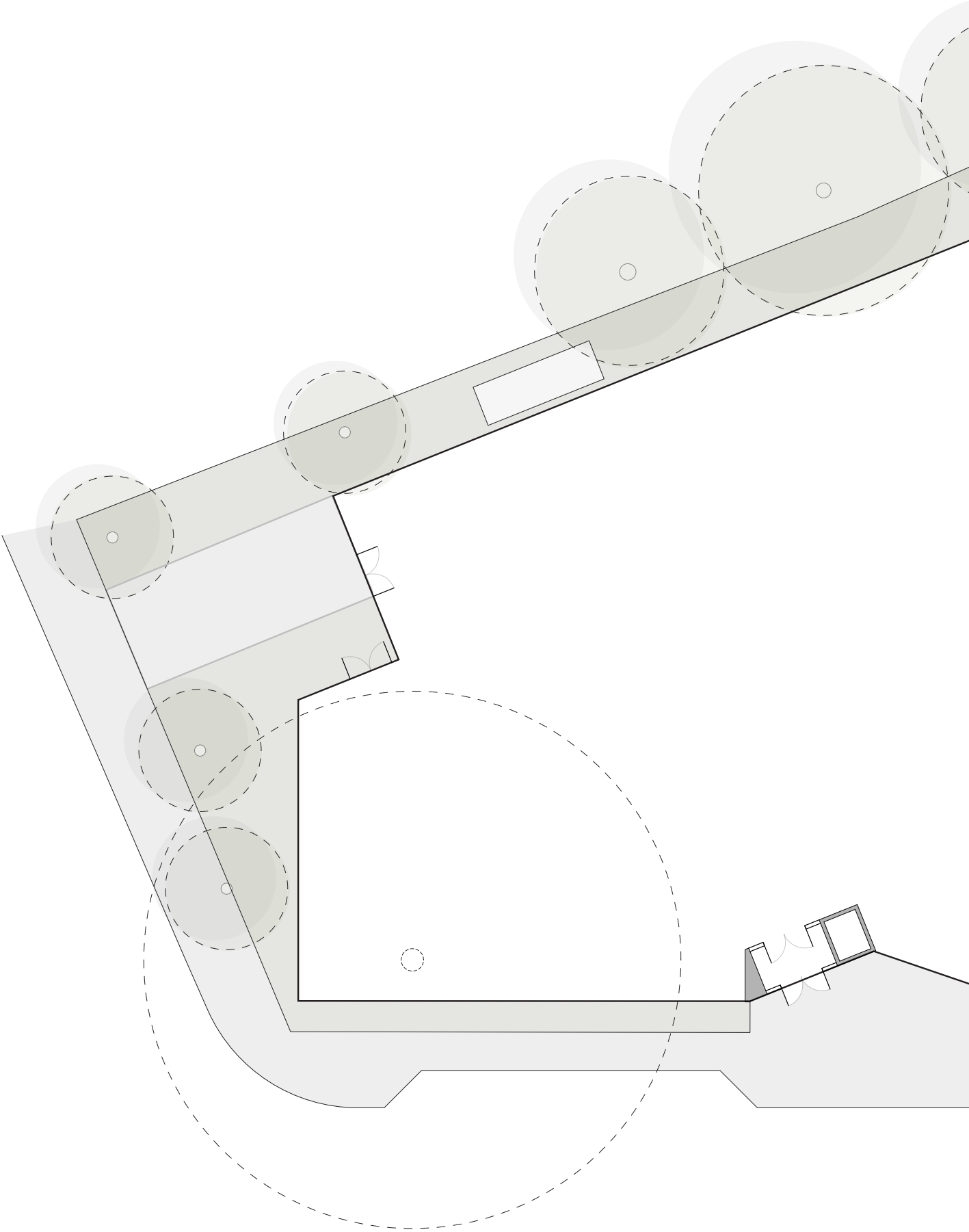


INITIAL CONCEPT PLAN - 05.01.2018

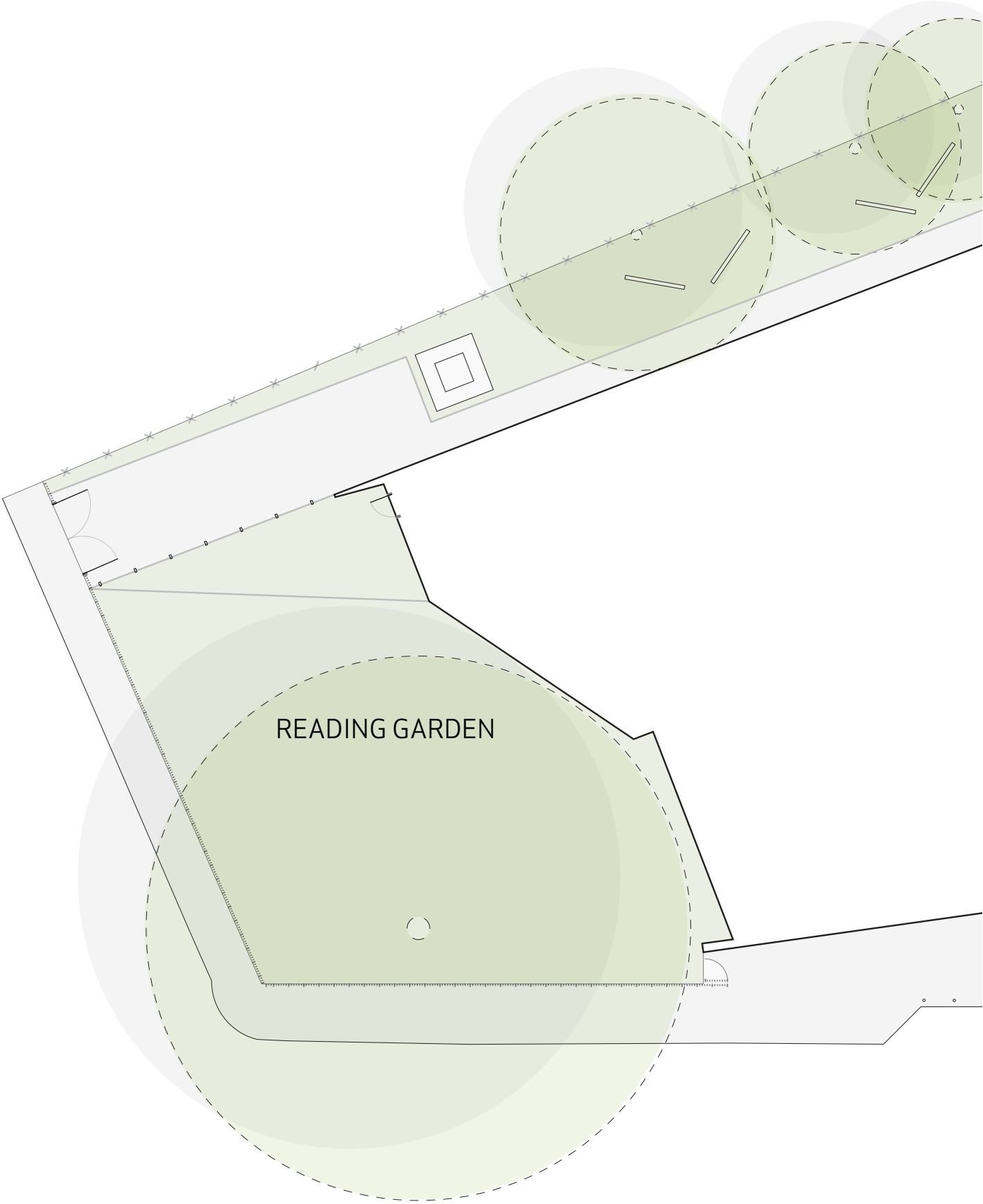


EXISTING PIN OAK

INITIAL CONCEPT PLAN - 05.01.2018



CURRENT PROPOSAL





CURRENT PLAN - 09.24.2018

FIRST FLOOR PLAN

IMPROVEMENTS OVER EXISTING BUILDING:

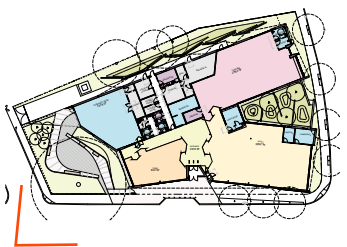
6,700 additional sf of building area
13,900 sf Total

- Accessible front door on Adams Street
- Dedicated drop-off
- Easier access to collections
- High-performance sustainable systems
- Expanded capacity in Community Room
- Two study rooms (4-6 people)
- One conference room (8-12 people)
- Additional computer work stations

BUILDING EXTERIOR

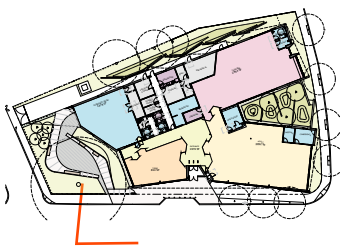


ADAMS STREET AT OAKTON AVE CORNER - LOOKING SOUTH TOWARD ENTRY & TEEN SPACE



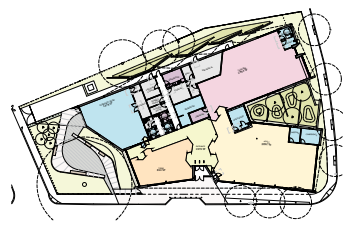


ADAMS STREET - LOOKING EAST AT ENTRY



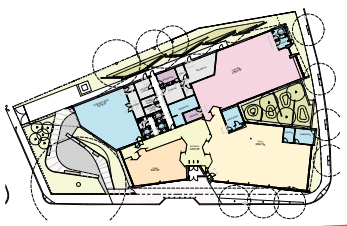


ADAMS STREET - LOOKING NORTHEAST TOWARD ENTRY



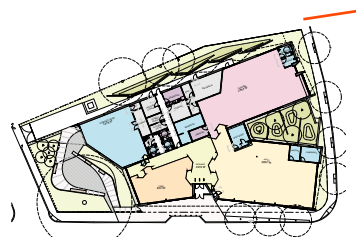


ADAMS STREET AT DELMONT STREET CORNER - LOOKING NORTH TOWARD ADULT SPACE



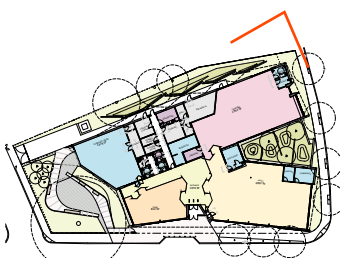


DELMONT STREET - LOOKING NORTH TOWARD CHILDRENS' AREA



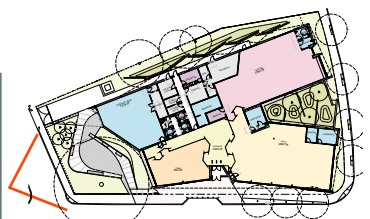


EAST SIDE - LOOKING NORTH TOWARD CHILDRENS' AREA





OAKTON AVE - LOOKING SOUTH TOWARD READING GARDEN





GLAZED TERRACOTTA EXAMPLES

DARK GLAZED TERRACOTTA



LIGHT GLAZED TERRACOTTA



COPPER

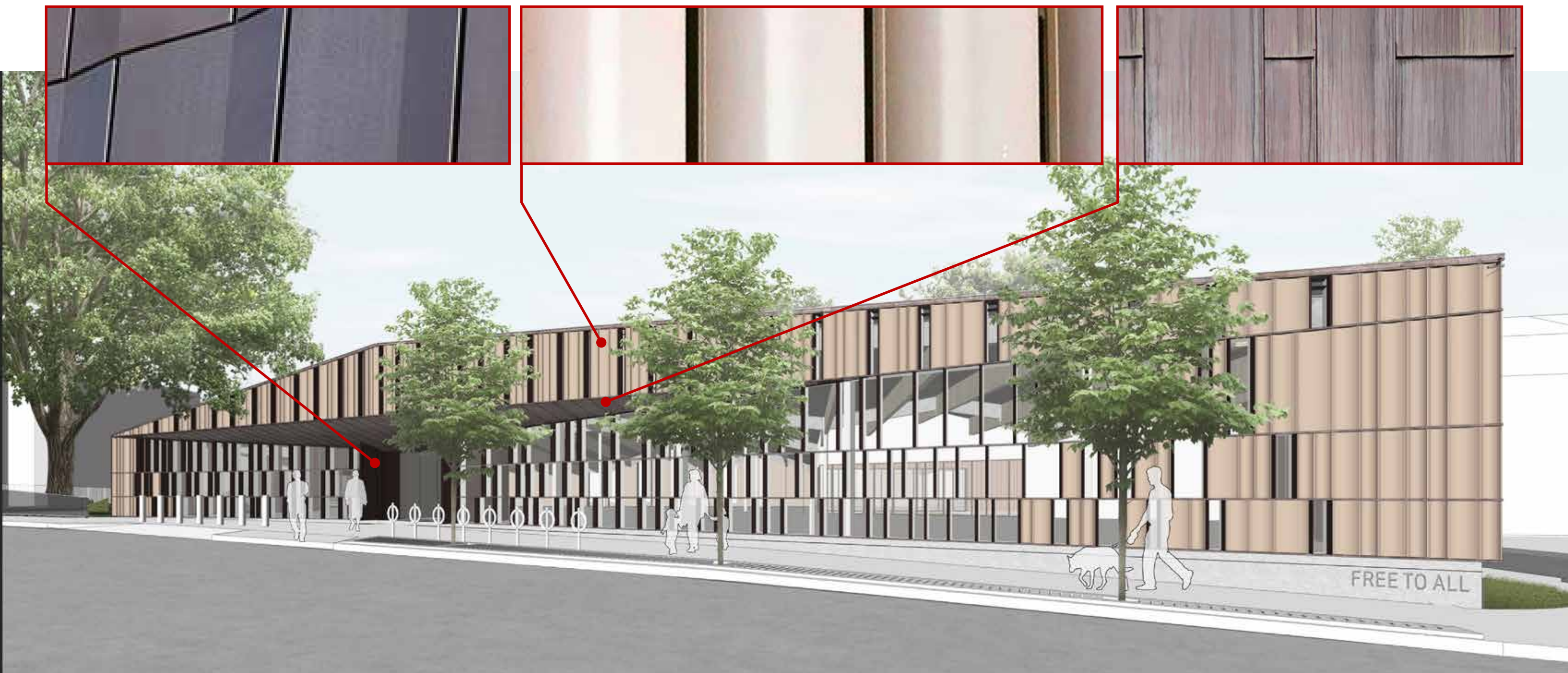
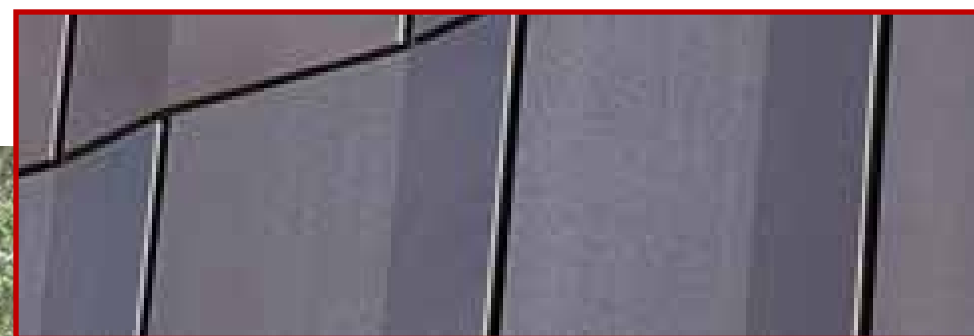


MATERIAL PALETTE

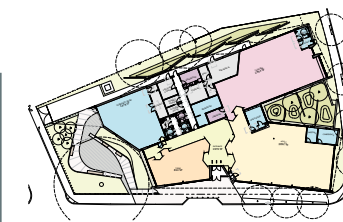
DARK GLAZED TERRACOTTA

LIGHT GLAZED TERRACOTTA

COPPER



ADAMS STREET - LOOKING NORTHEAST



COPPER



DARK GLAZED TERRACOTTA



UNGLAZED TERRACOTTA



MATERIAL PALETTE

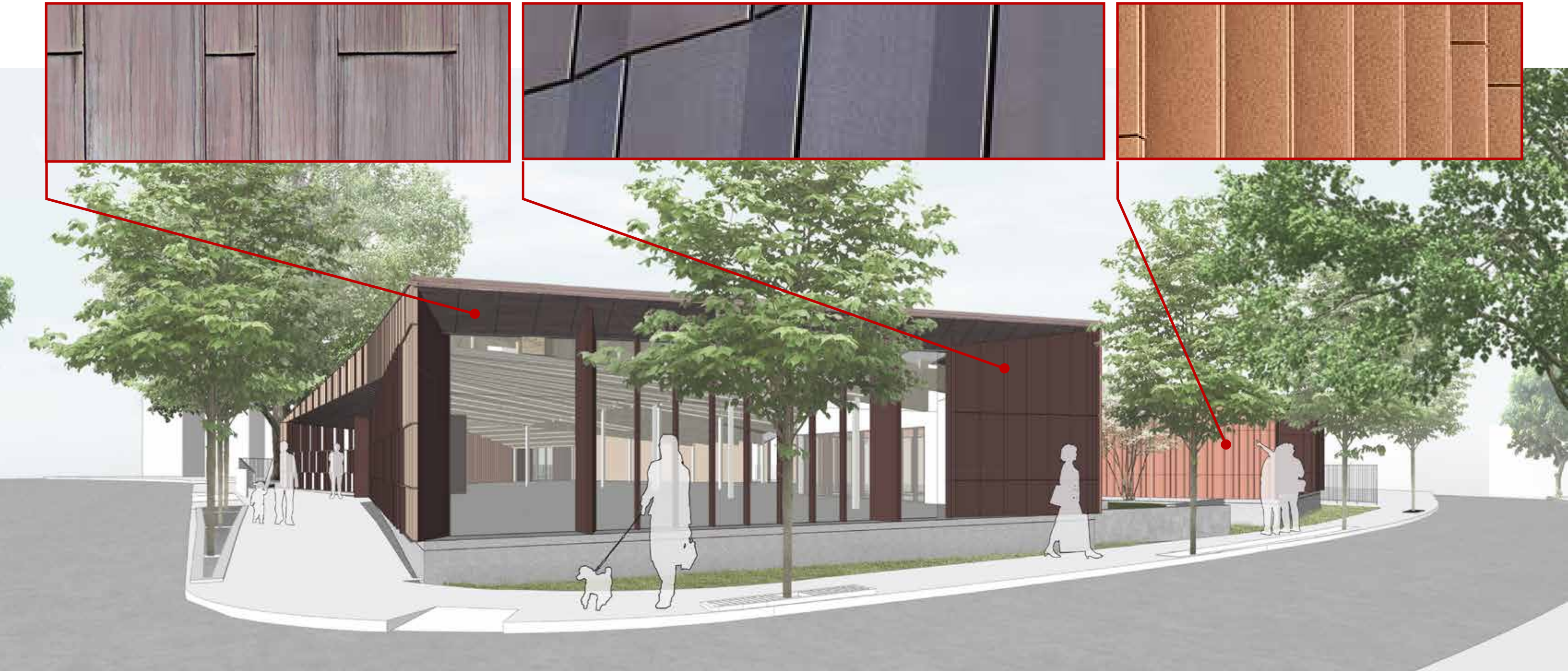
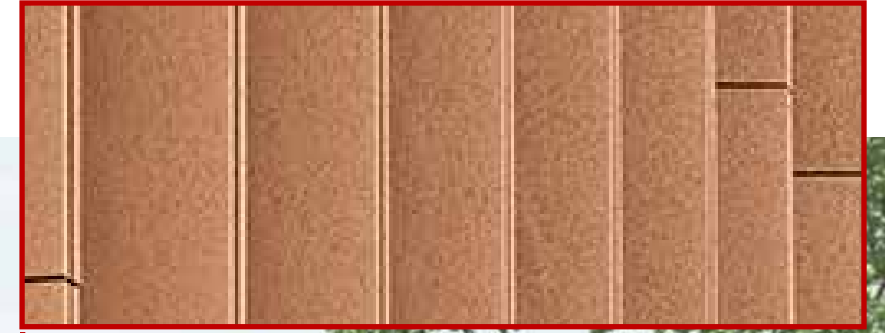
COPPER



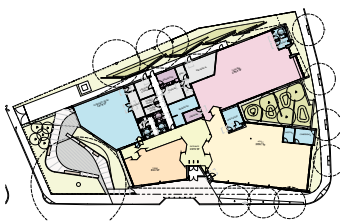
DARK GLAZED TERRACOTTA



UNGLAZED TERRACOTTA



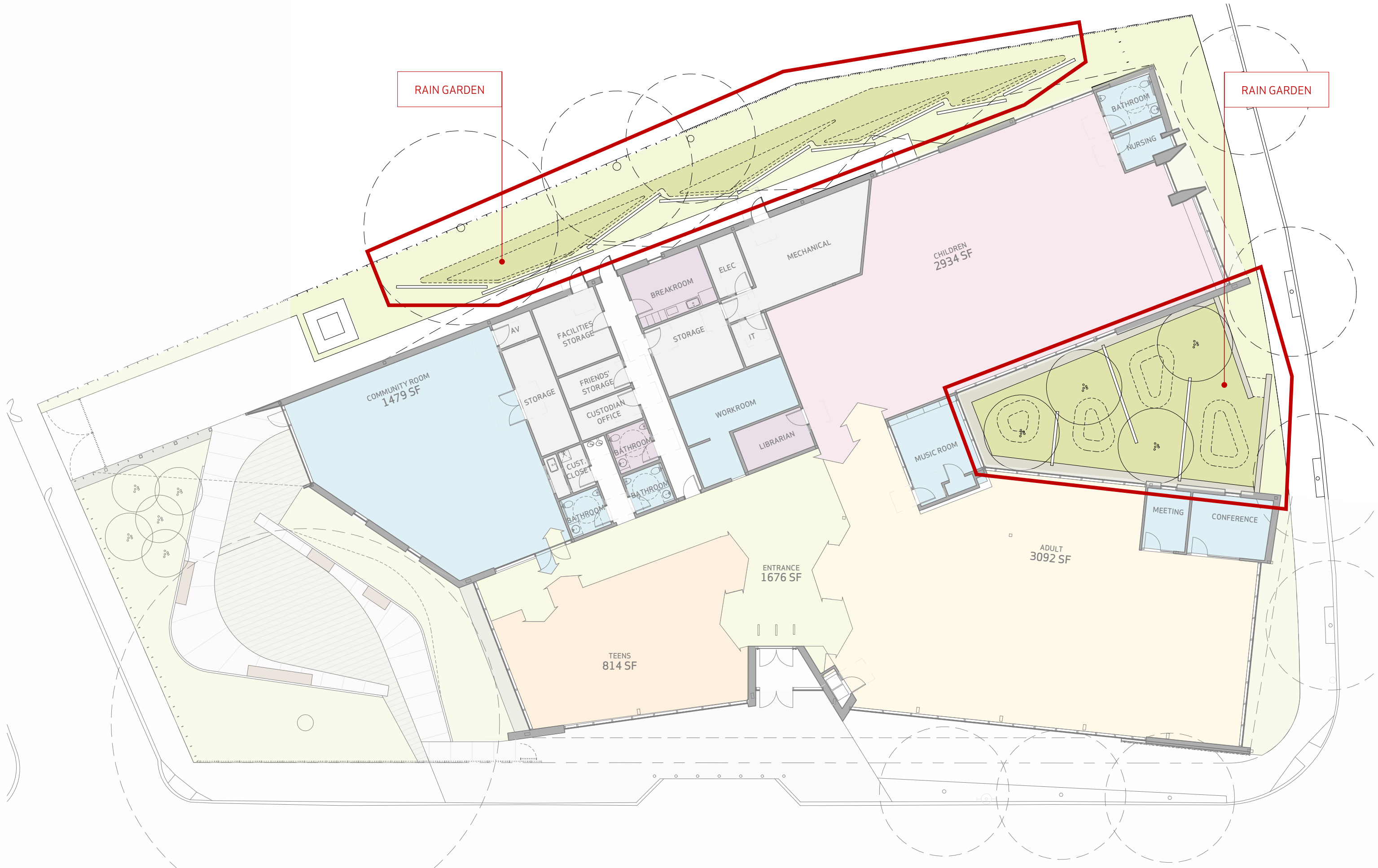
ADAMS STREET AT DELMONT STREET CORNER - LOOKING NORTH



RAIN GARDENS

RAIN GARDEN

RAIN GARDEN



Rain Garden -Planting Palette



Blue Ice bluestar
Amsonia 'Blue Ice'



Purple Dome Dwarf New England Aster
Aster novae-angliae 'Purple Dome'



Sensitive Fern
Onoclea sensibilis



Miss Manners Obedient Plant
Physostegia 'Miss Manners'



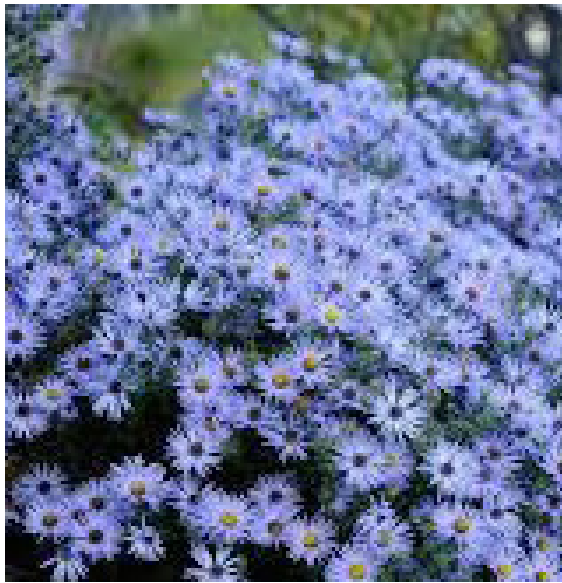
Poverty Rush
Juncus tenuis



Creme Brulee Tickseed
Coreopsis 'Creme Brulee'



Little Lemon Dwarf Goldenrod
Solidago 'Little Lemon'



October Skies' Aromatic Aster
Aster oblongifolius 'October Skies'



Appalachian Blazing Star
Liatris microcephala

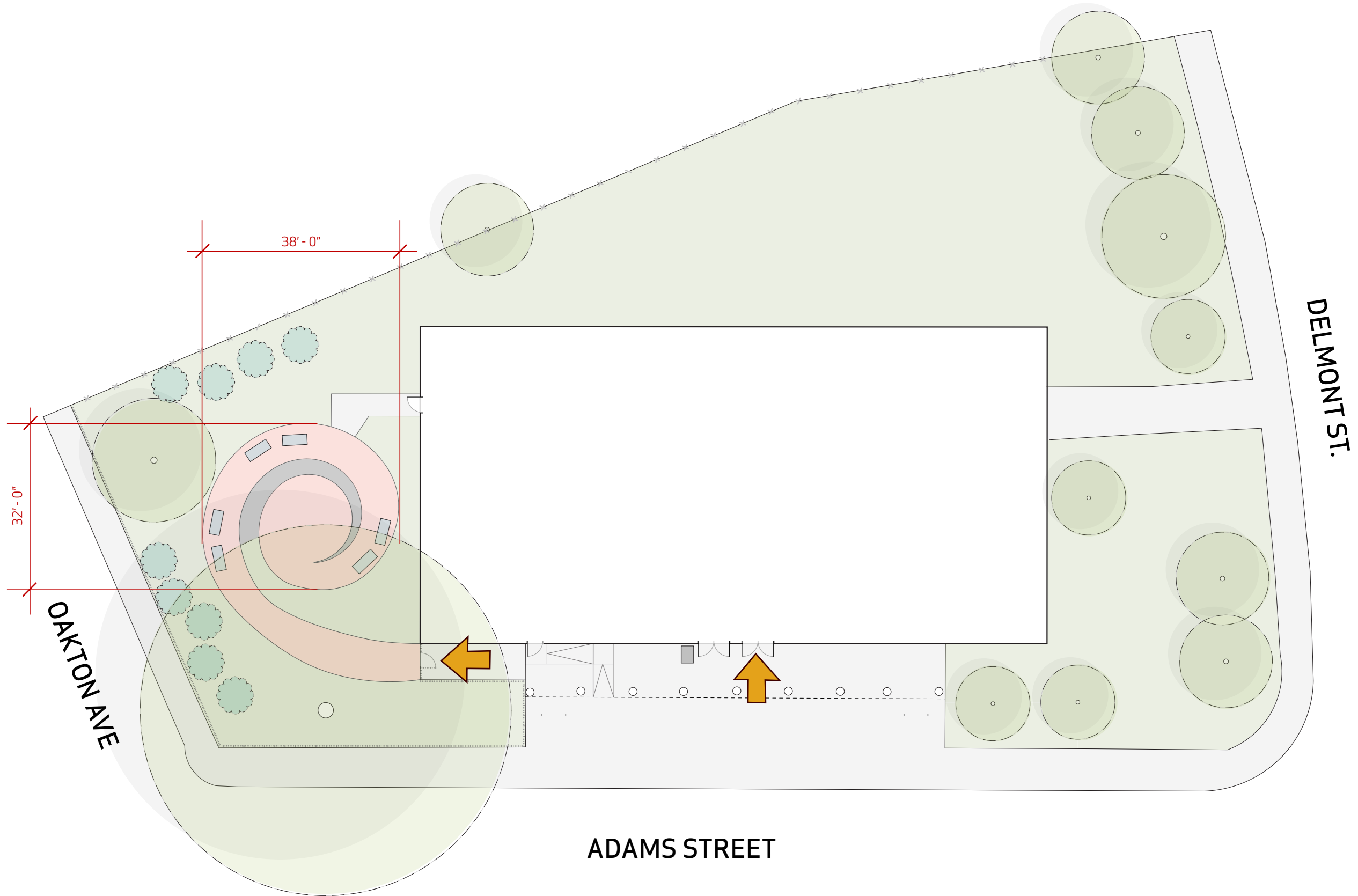


Prarie Sedge
Carex bicknellii



READING GARDEN

EXISTING CONDITIONS



EXISTING CONDITIONS



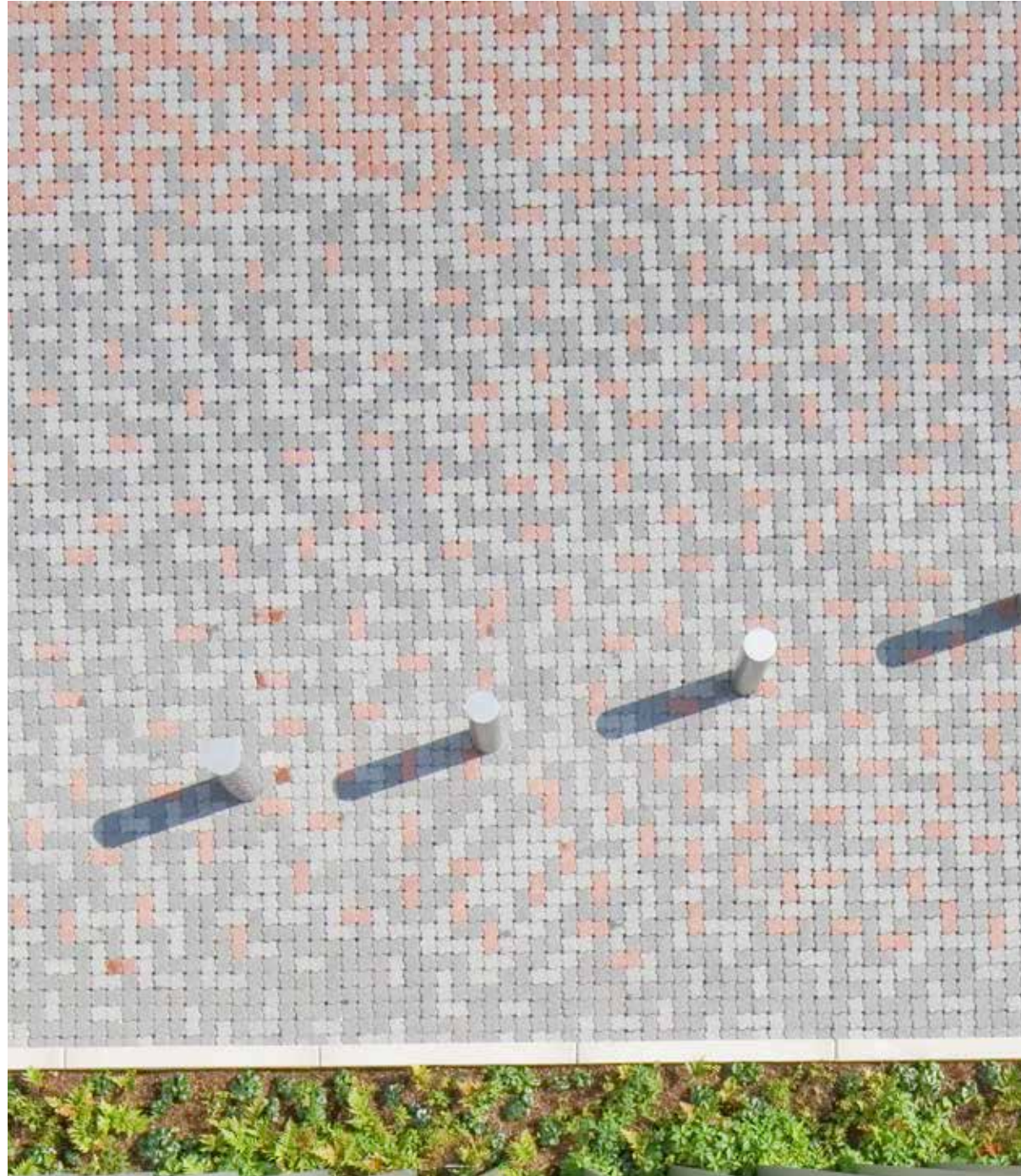
OPTION 1





CONCERT

OPTION 1 - PRECEDENTS



OPTION 2





BOOK SALE

OPTION 2 - PRECEDENTS



OPTION 3





STORY TIME

OPTION 3 - PRECEDENTS



ADAMS STREET: SELECT PROJECT GOALS

1. VISIBILITY/ *SECURE SIGHT LINES* WITHIN LIBRARY
2. CAPTURING *OUTDOOR SPACE* / OUTDOOR PROGRAM
3. *TRANSPARENCY* AND INCLUSIVITY (ABILITY TO SEE ACTIVITIES OF THE LIBRARY FROM THE EXTERIOR)
4. ADJACENCIES THAT *SUPPORT PROGRAMS* AND GOALS
5. COMPATIBILITY WITH ADAMS STREET *NEIGHBORHOOD*
6. *SUSTAINABILITY* TARGET LEED SILVER



Percent for Art Program

The Percent for Art program is an initiative of [Boston Creates](#).

The program demonstrates the City's commitment to [sustainable funding for the arts](#) by setting aside one percent of the City's annual capital borrowing budget for the commissioning of [public art](#).



Public Art + Capital Projects

Percent for Art will integrate public art in City capital projects, engage city agencies and municipal partners on best public art practices, and create **high quality** and **meaningful public art**.



Guidelines

- Funding equitably across neighborhoods
- 6 Projects / year
- Permanent art
- High impact - public buildings and public sites
- Starting the process early - typical project 18 months
- developed out of an [RFP](#)



What is an RFP?

A Request for Proposals is a call to artists to submit a specific project proposal. The RFP outlines all the details of the project, including community values, vision, and site use.

QUESTIONS AND COMMENTS

THANK YOU