

Fields Corner Branch Library

Public Meeting

December 12, 2018



**BOSTON
PUBLIC
LIBRARY**

Martin J. Walsh, Mayor
Boston Public Library
City of Boston, Public Facilities Department
Oudens Ello Architecture / RODE Architects

Agenda

1. Introduction: David Leonard, President, Boston Public Library
2. The Team
3. The Process
4. Initial Thoughts
5. Next Steps
6. Feedback

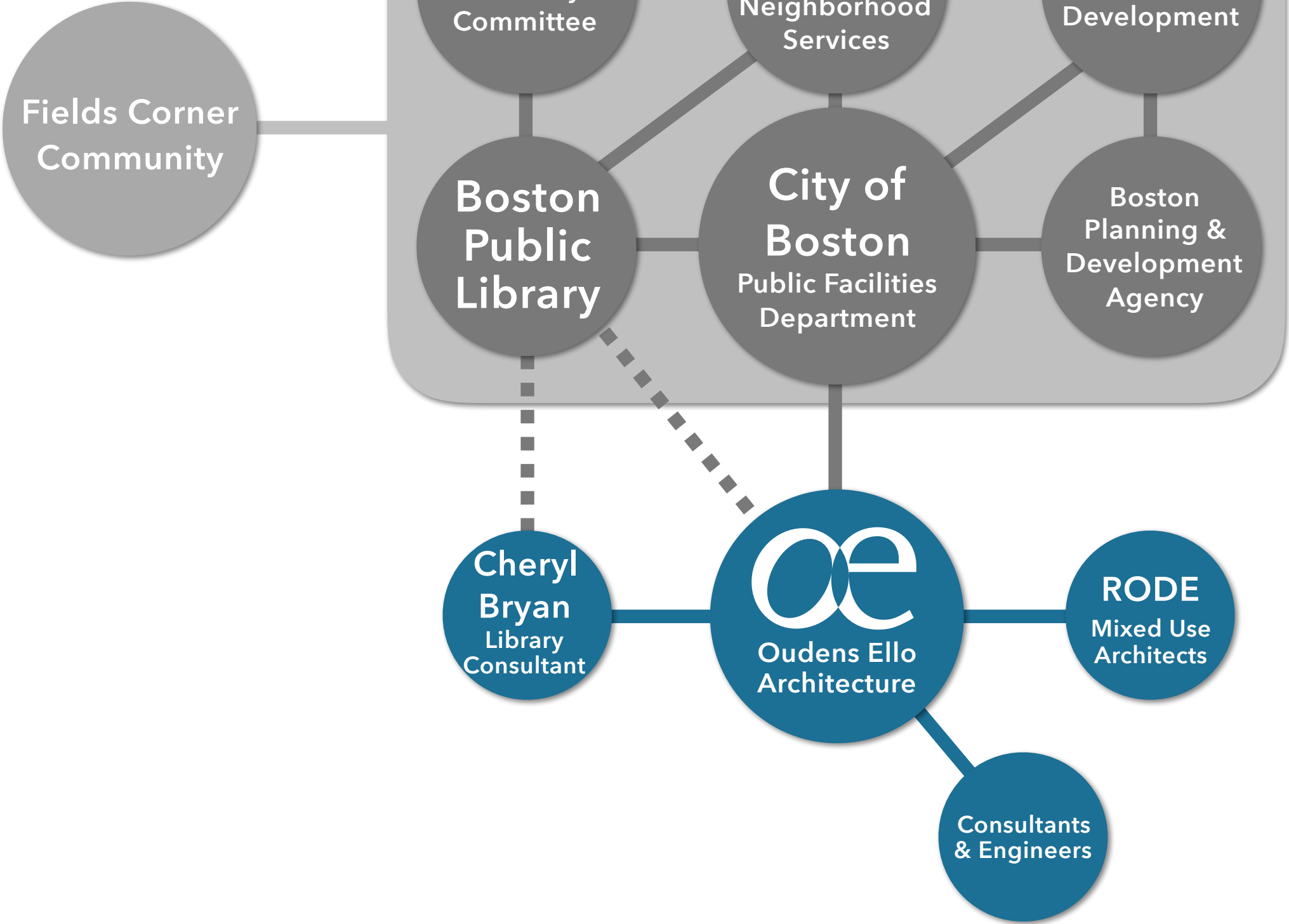


The Team



The Team

Project Team



The Team

Project Team

MAYOR'S OFFICE:

PATRICK BROPHY, *CHIEF OF OPERATIONS*

CITY OF BOSTON, PUBLIC FACILITIES DEPARTMENT:

PATRICIA M. LYONS, *DIRECTOR*

PAUL DONNELLY, *ASSISTANT DIRECTOR*

MAUREEN ANDERSON, *SENIOR PROJECT MANAGER*

DEPARTMENT OF NEIGHBORHOOD DEVELOPMENT:

MARGUERITE CRAMER, *ADVISOR*

BOSTON PUBLIC LIBRARY:

DAVID LEONARD, *PRESIDENT*

EAMON SHELTON, *DIRECTOR OF OPERATIONS*

PRISCILLA FOLEY, *DIRECTOR OF NEIGHBORHOOD SERVICES*

LAURA IRMSCHER, *CHIEF OF COLLECTIONS*

ALISON FORD, *MAJOR PROJECTS PROGRAM MANAGER*

MICHAEL COLFORD, *DIRECTOR OF LIBRARY SERVICES*

LISSA SCHWAB, *MAJOR PROJECTS COORDINATOR*

MAYOR'S OFFICE OF NEIGHBORHOOD SERVICES:

KHOA PHAM, *DORCHESTER LIAISON*

OFFICE OF BUDGET MANAGEMENT:

ERA KAPLAN, *MANAGEMENT ANALYST*

LOUDENS ELLO ARCHITECTURE

MATTHEW LOUDENS, *PRINCIPAL*

CONRAD ELLO, *PRINCIPAL*

CHRIS GENTER, *SENIOR ASSOCIATE*

RODE ARCHITECTS, MIXED USE

ERIC ROBINSON, *PRINCIPAL*

LIBRARY CONSULTANT:

CHERYL BRYAN CONSULTING

STRUCTURAL ENGINEER:

RSE ASSOCIATES

MEP/FP ENGINEER:

WSP

CIVIL ENGINEER:

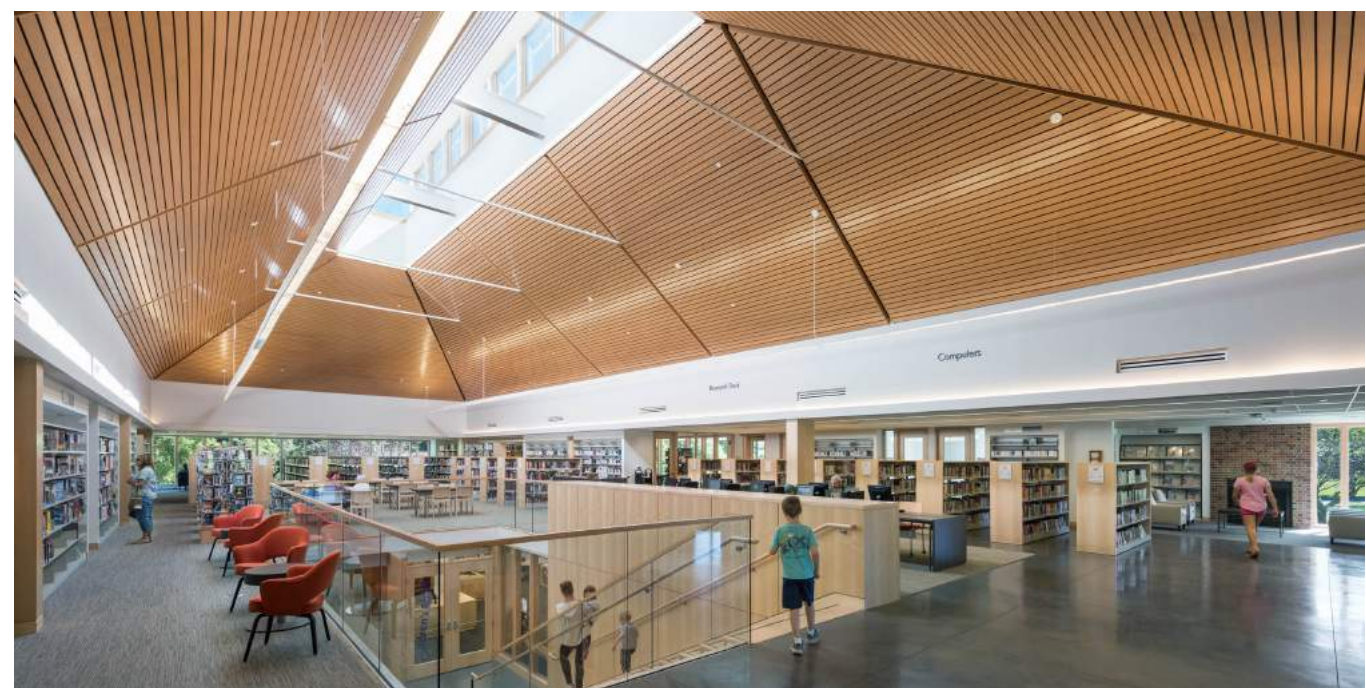
NITSCH ENGINEERING

LANDSCAPE:

G2 COLLABORATIVE

CODE:

CODE RED CONSULTANTS





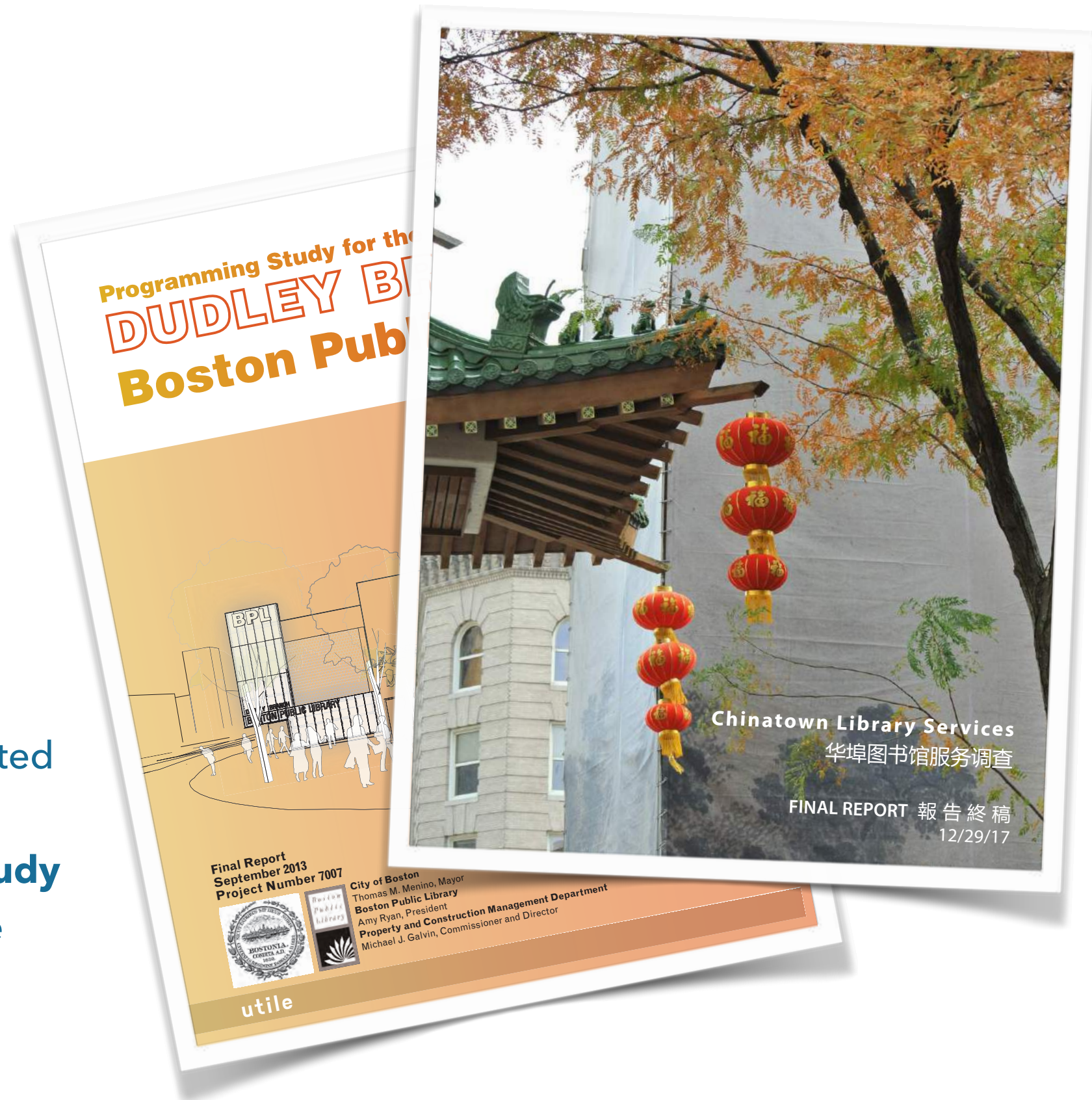
The Process



The Process

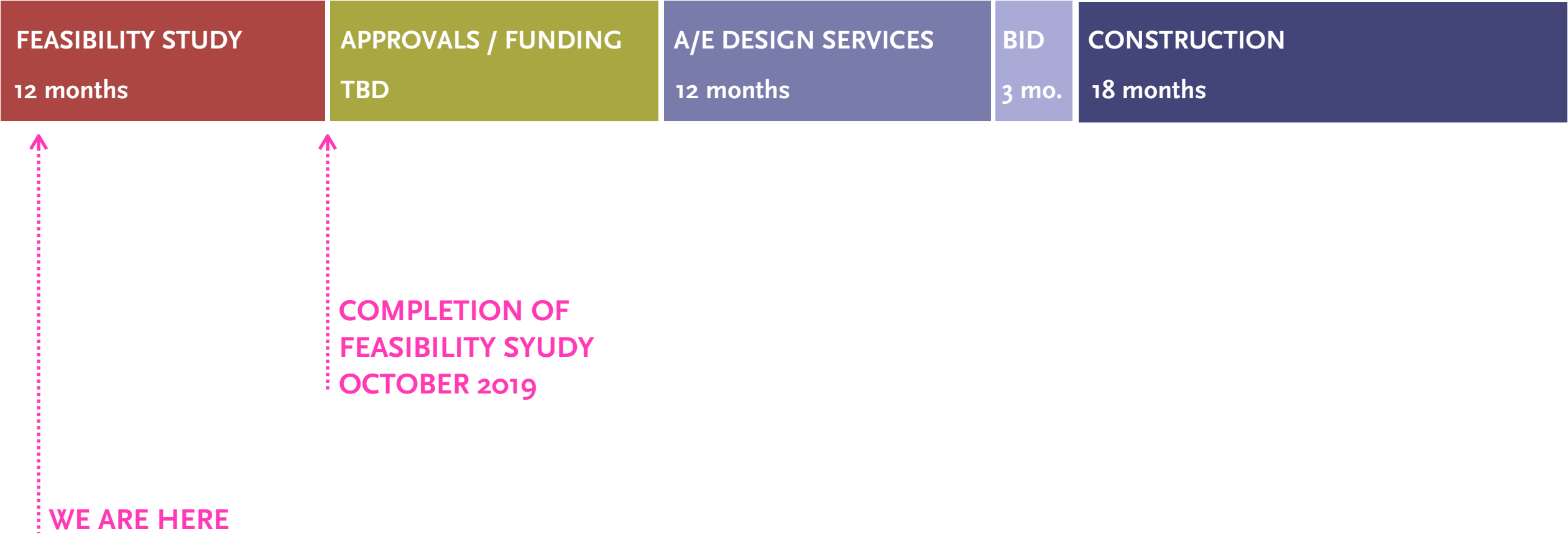
Planning Study

Like the recent studies completed for the Dudley and Chinatown Branches, this is a **Planning Study** that precedes a possible future Building Design Project



The Process

Planning Study

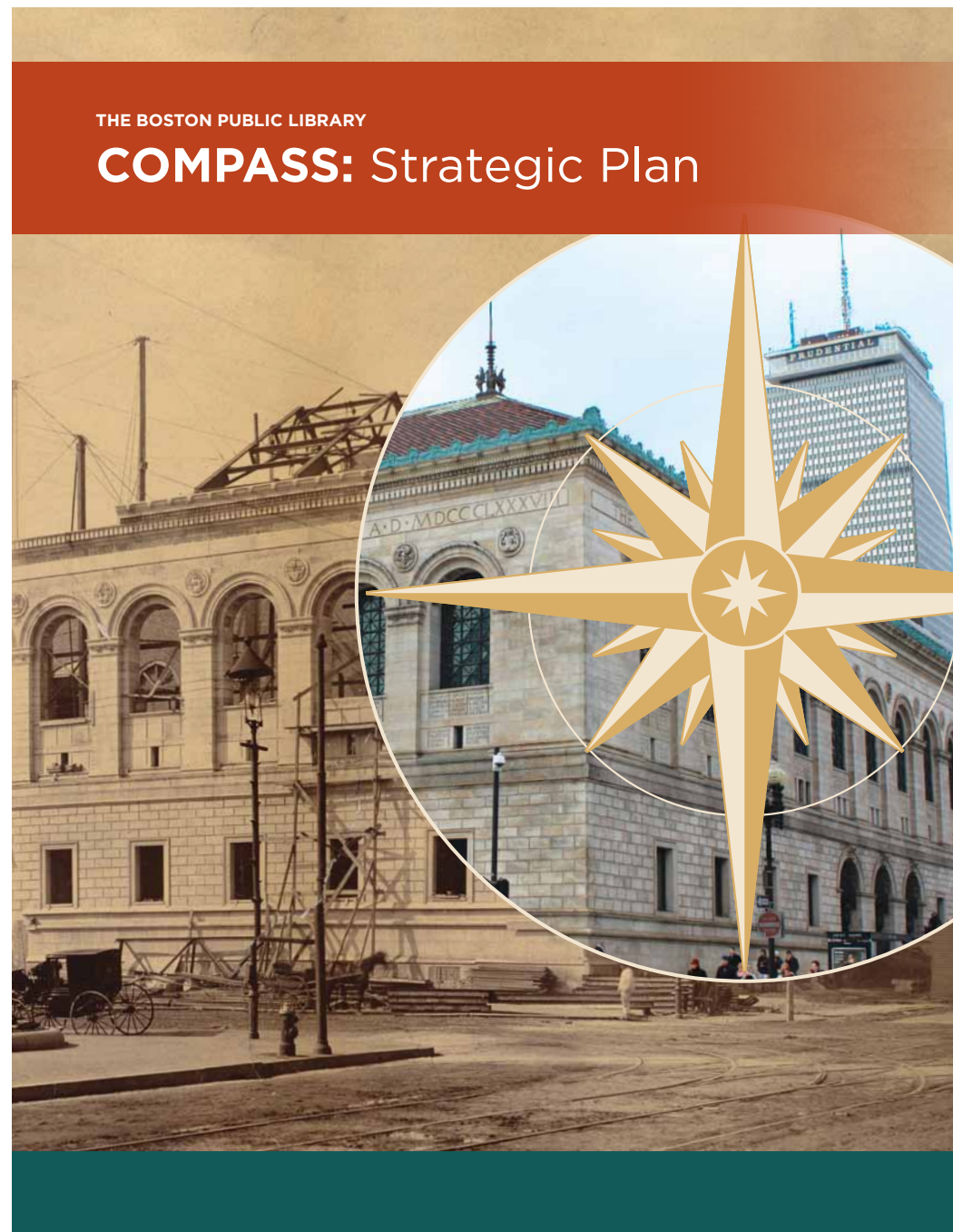


Project Goals

- Evaluate existing building's physical condition and its ability to meet programmatic needs
- Develop a building space program based on feedback from community and staff
- Explore opportunities for mixed-use development with library (i.e. housing, retail, commercial)
- Strengthen the library's connection to the Fields Corner neighborhood and develop possible expanded program opportunities specific to that community
- Identification of neighborhood demographic trends

The Process

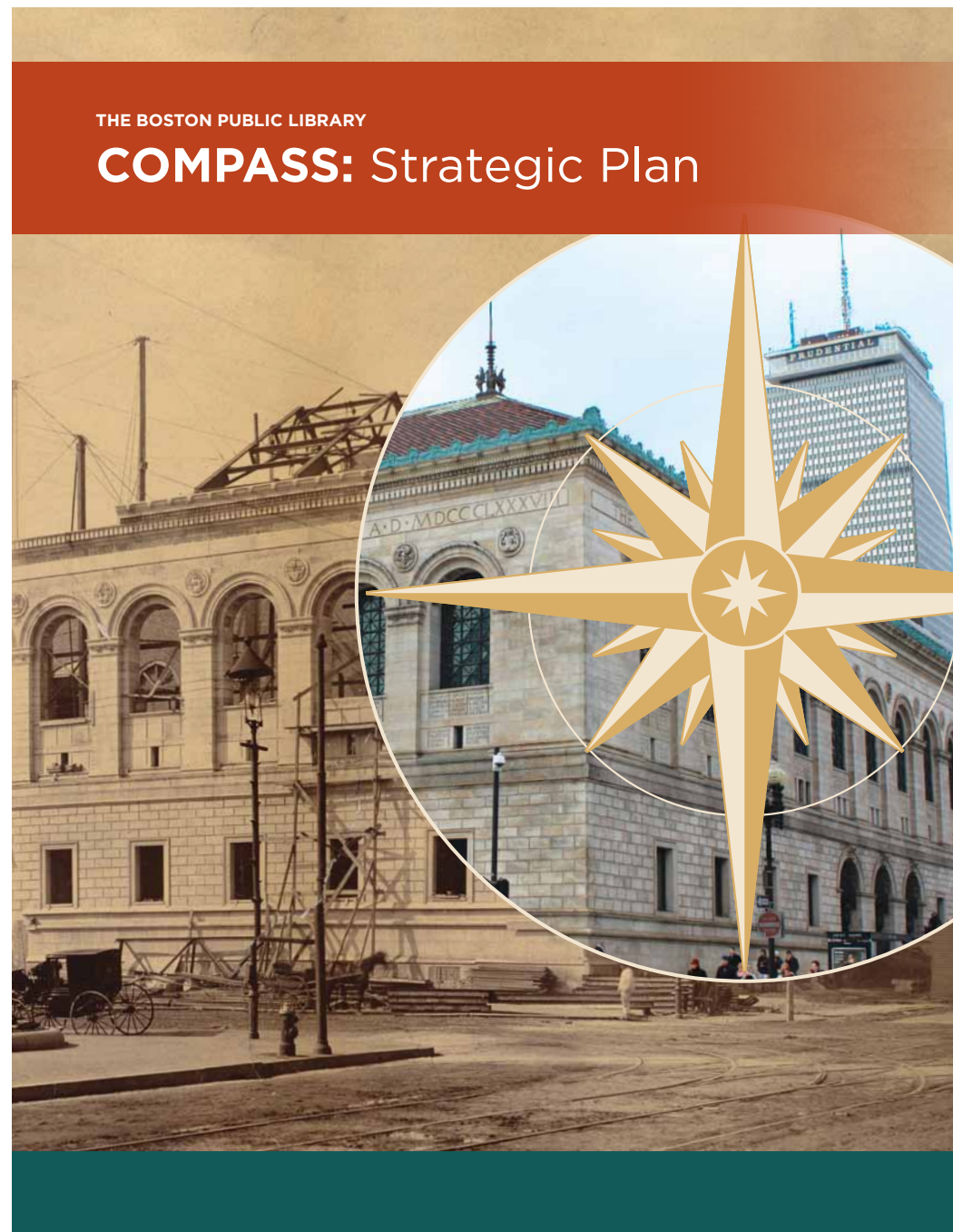
BPL Compass Principles for Excellence: "Free to All"



1. User-Centered Institution
2. Community Gathering
3. Special Collections
4. Center of Knowledge
5. Children and Teens
6. Access and Innovation
7. Sustainable Organization
8. Fun

The Process

BPL Compass Principles for Excellence: "Free to All"

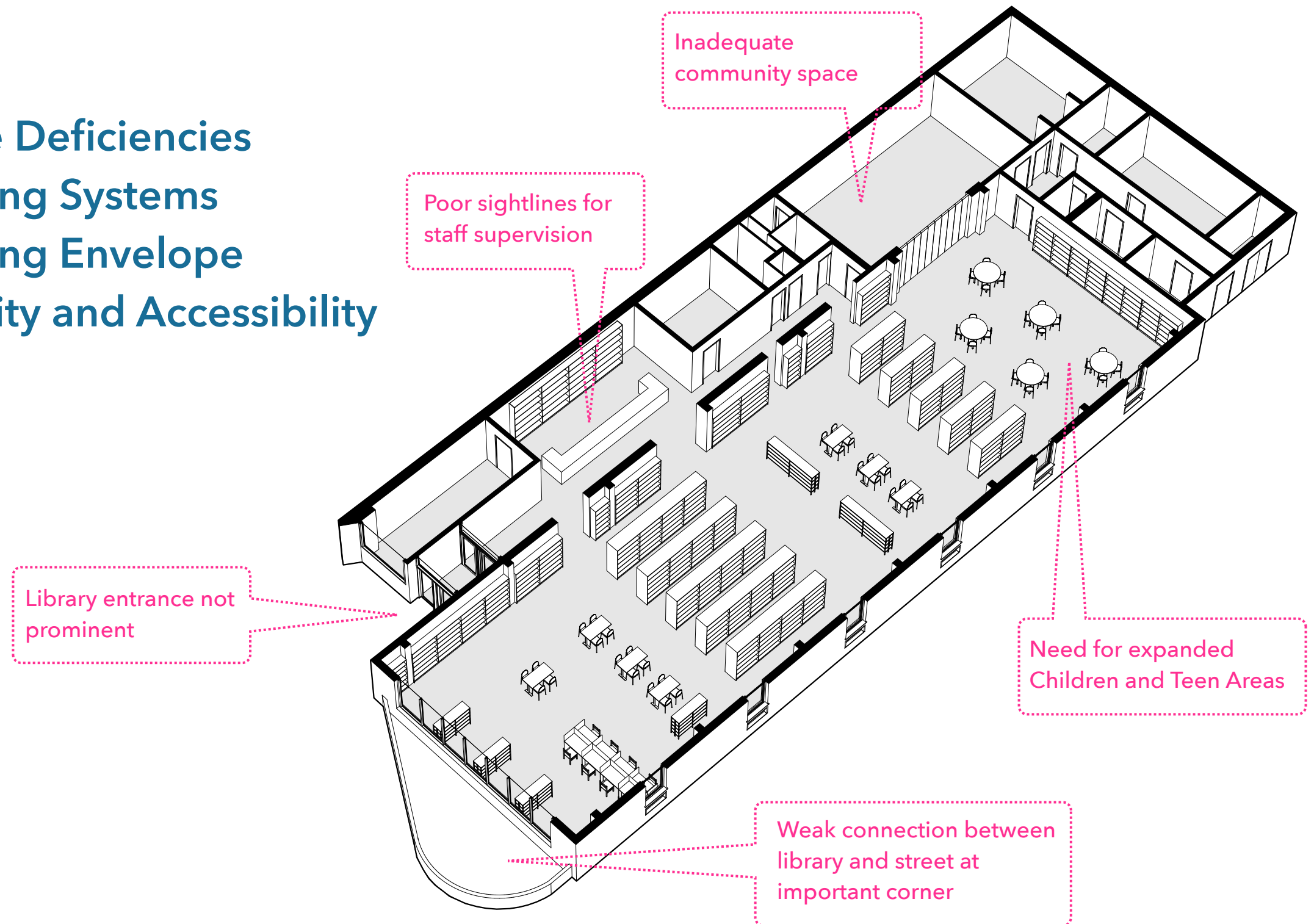


Service Priorities:

1. Reading & Literacy
2. Community Gathering
3. Reference & Instruction
4. Cultural Heritage

Existing Conditions Assessment

- Space Deficiencies
- Building Systems
- Building Envelope
- Security and Accessibility



The Process

Existing Conditions Assessment



The Process

Building Program

Existing Areas to be Improved:

Entry

Borrower's Desk

Staff Work Room

Adult Collection/Reading

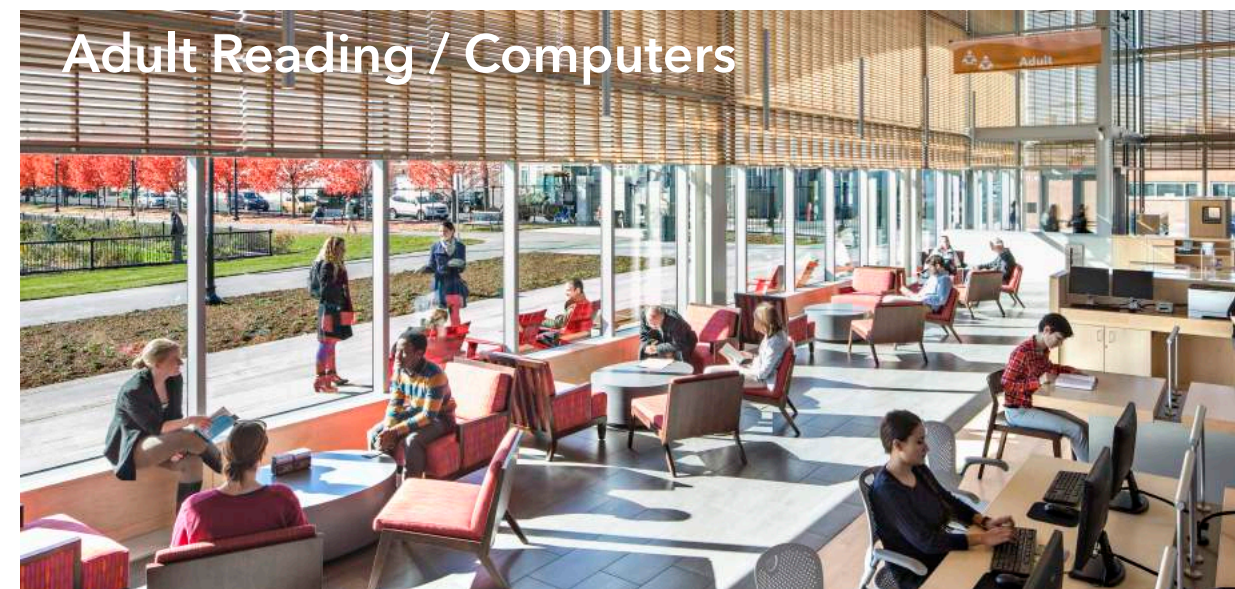
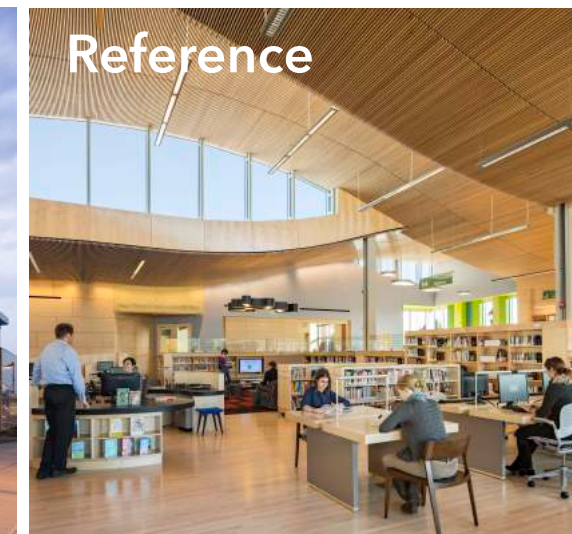
Children Collection/Reading

Teen Collection/Reading

Community Room

Restrooms (public and staff)

Building Services (trash, storage, etc.)



The Process

Building Program

Existing Areas to be Improved:

Entry

Borrower's Desk

Staff Work Room

Adult Collection/Reading

Children Collection/Reading

Teen Collection/Reading

Community Room

Restrooms (public and staff)

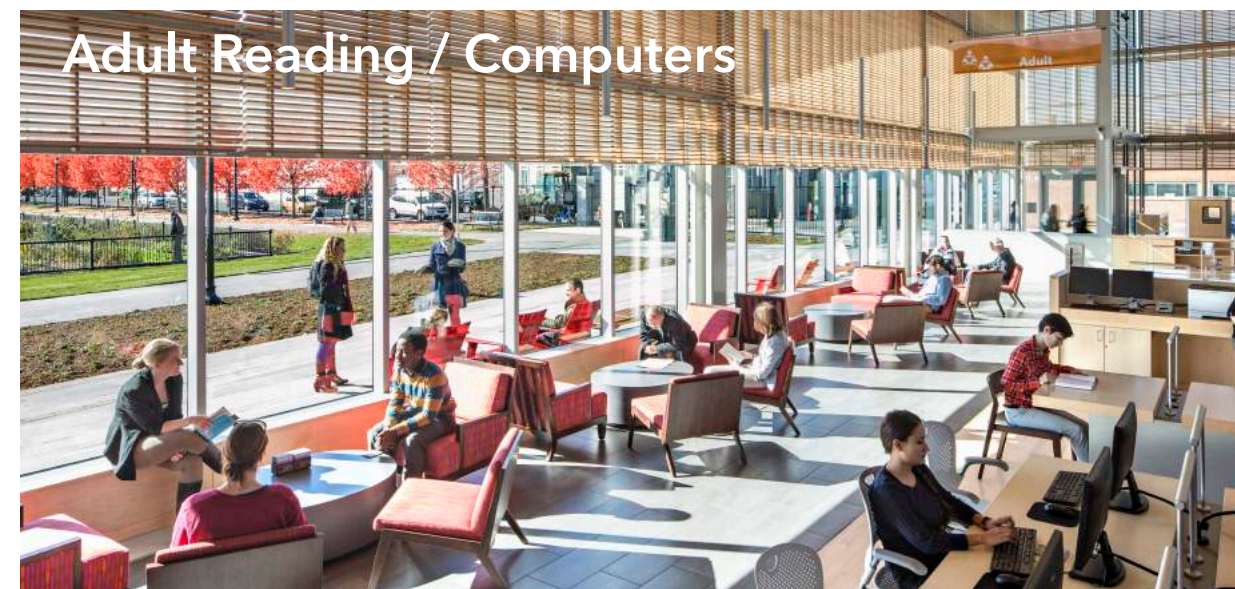
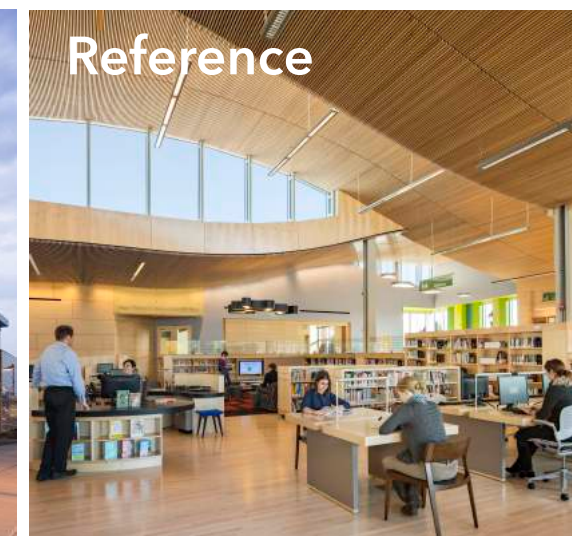
Building Services (trash, storage, etc.)

Possible Expanded/New Areas:

Community Room (100 seats)

Computer/Multipurpose Classroom

Small Conference/Study Rooms



The Process

Building Program

Qualitative Library Goals:

Improved Sightlines

Daylighting

Flexible Spaces

Improved Technology

Improved Building Comfort

Improved Staff Workflow



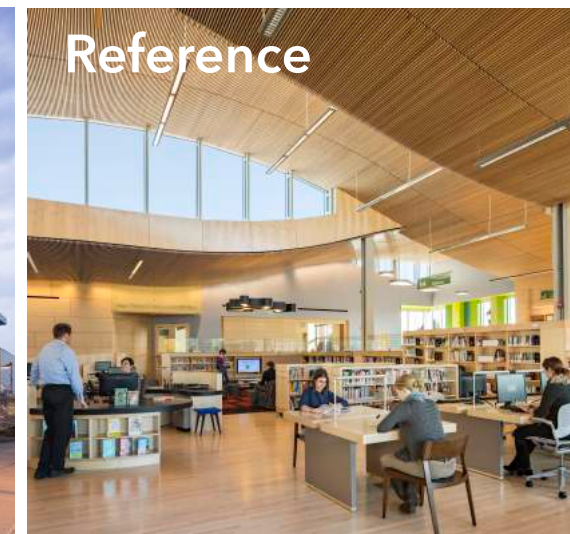
Borrowers Desk



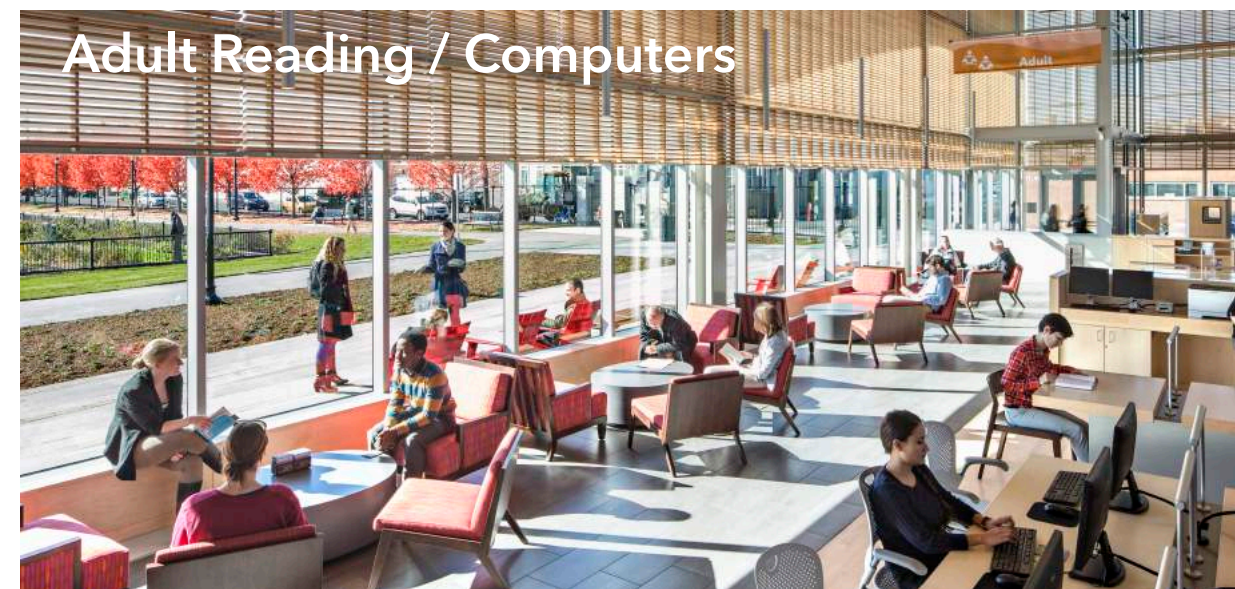
Community Room



Building Entry



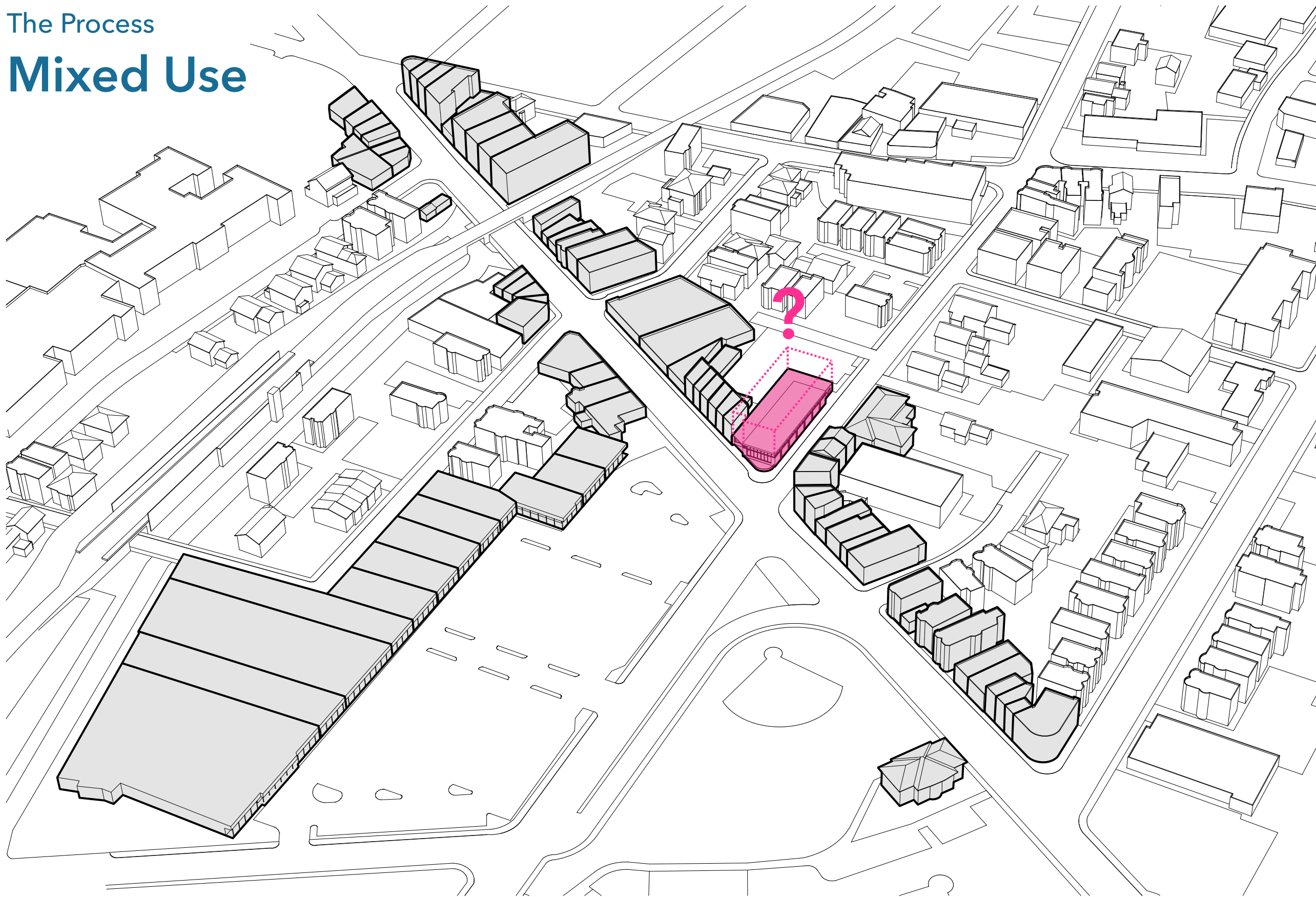
Reference



Adult Reading / Computers

The Process

Mixed Use

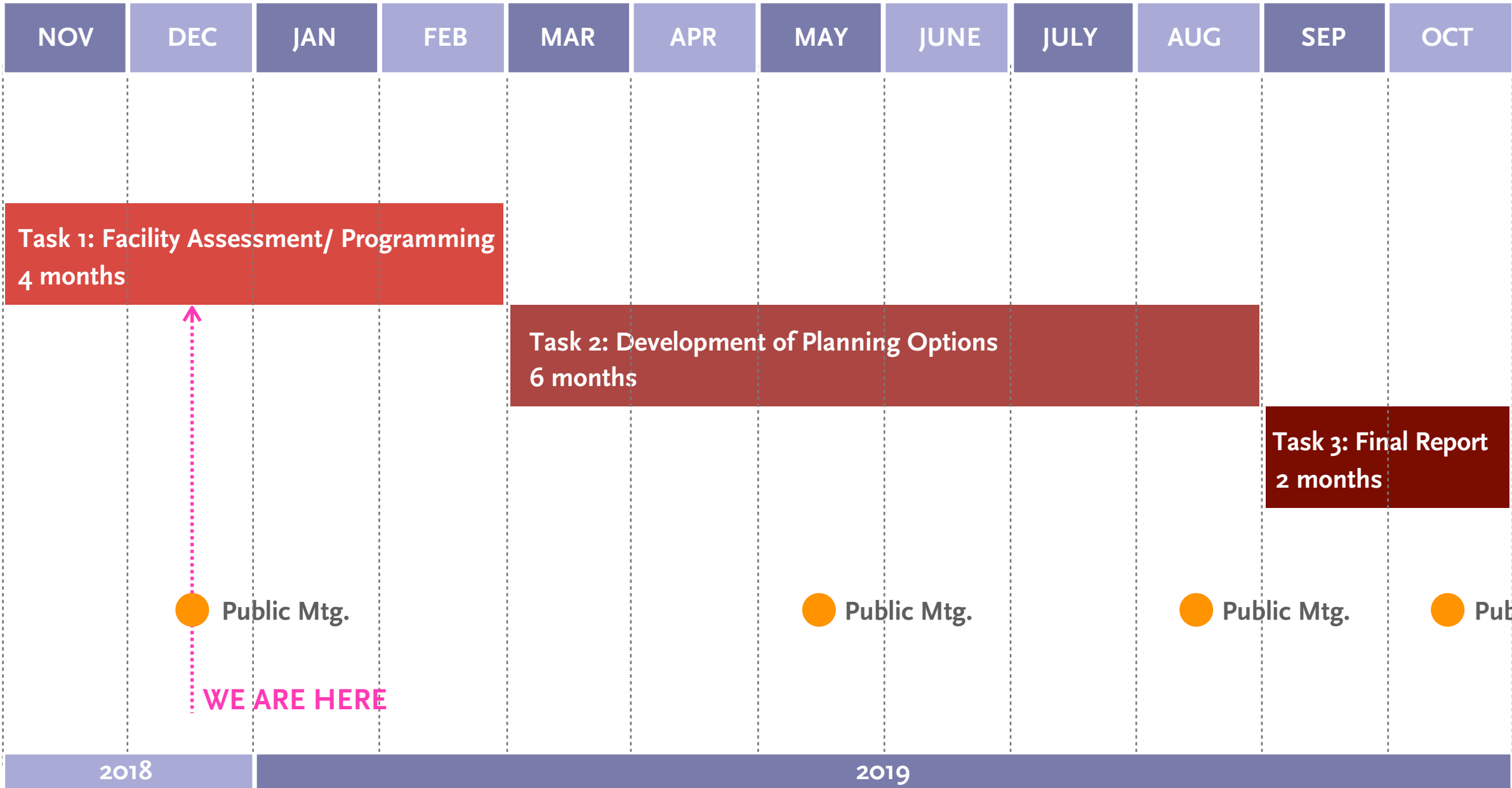


Next Steps



Next Steps

Project Schedule



Feedback?

Please contact:

Priscilla Foley, *Director of Neighborhood Services*

pfoley@bpl.org