



ADAMS STREET BRANCH LIBRARY  
DESIGN PHASE  
CITY OF BOSTON  
MARTIN J. WALSH, MAYOR  
BOSTON PUBLIC LIBRARY AND PUBLIC FACILITIES DEPARTMENT  
PUBLIC PRESENTATION - MARCH 5<sup>TH</sup>, 2019



# PROJECT TEAM

## MAYOR'S OFFICE:

PATRICK BROPHY, CHIEF OF OPERATIONS  
NORA DOHERTY, SPECIAL ASSISTANT

## CITY OF BOSTON PUBLIC FACILITIES DEPARTMENT:

PATRICIA M. LYONS , DIRECTOR  
TOM LEAHY, ASSISTANT DIRECTOR  
JAMES MCGAFFIGAN, PROJECT MANAGER  
ALISTAIR LUCKS , STAFF ARCHITECT

## BOSTON PUBLIC LIBRARY:

DAVID LEONARD, PRESIDENT  
EAMON SHELTON, DIRECTOR OF OPERATIONS  
PRISCILLA FOLEY, DIRECTOR OF NEIGHBORHOOD SERVICES  
LAURA IRMSCHER, CHIEF OF COLLECTIONS  
ALISON FORD, MAJOR PROJECTS PROGRAM MANAGER  
MICHAEL COLFORD, DIRECTOR OF LIBRARY SERVICES  
LISSA SCHWAB, MAJOR PROJECTS COORDINATOR

## MAYOR'S OFFICE OF NEIGHBORHOOD SERVICES:

PATRICK FANDEL, DORCHESTER LIAISON

## OFFICE OF BUDGET MANAGEMENT:

ERA KAPLAN, MANAGEMENT ANALYST

## PROJECT CONSULTANTS:

### ARCHITECT:

NADAAA INC.

### STRUCTURE:

SOUZA, TRUE & PARTNERS, INC.

### MEP:

GARCIA, GALUSKA & DESOUSA, INC.

### CIVIL ENGINEER:

BSC GROUP

### LANDSCAPE:

GROUND

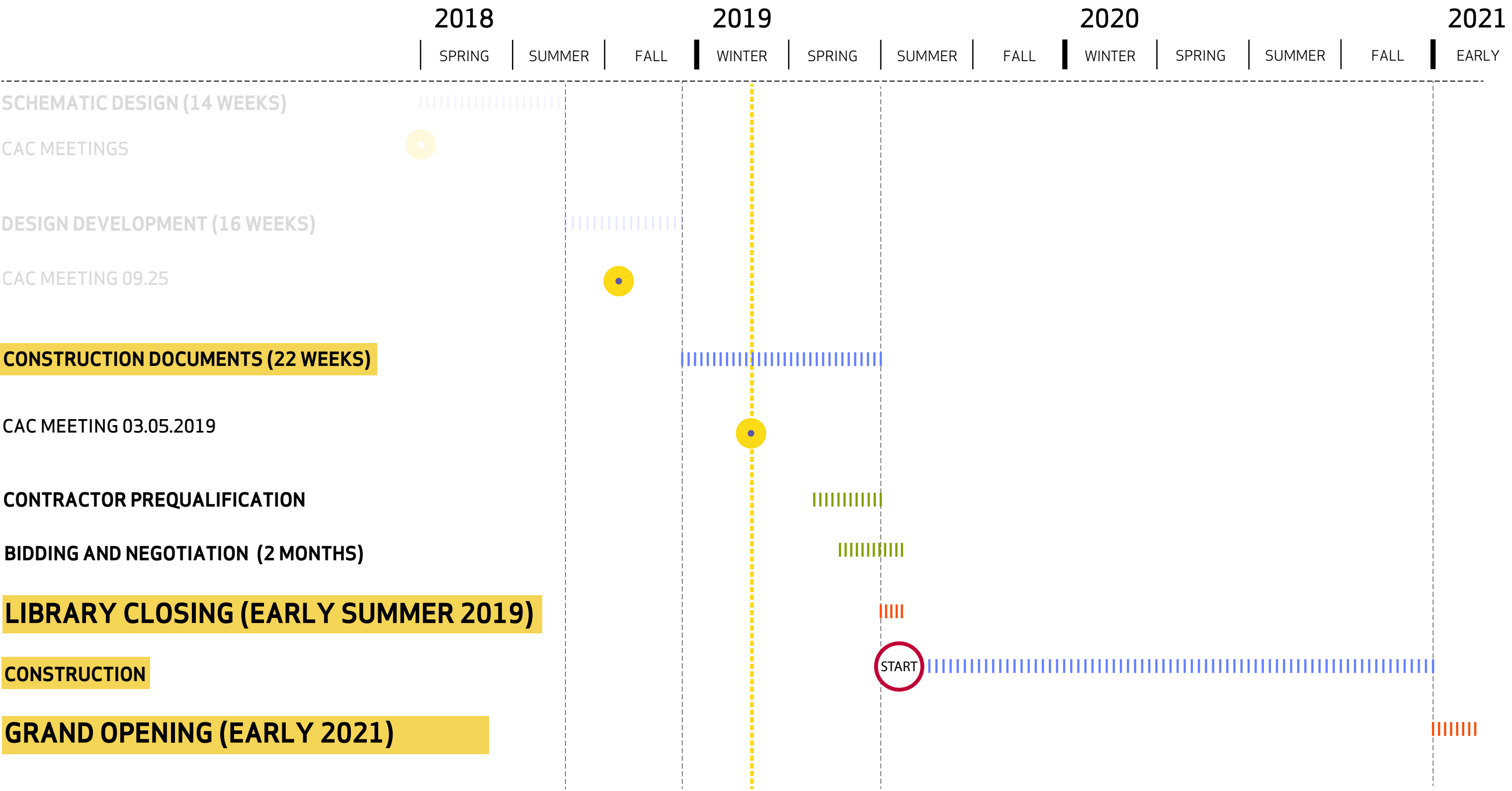
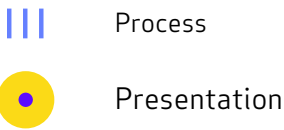
### CODE:

KEVIN S. HASTINGS, P.E., LEED AP

### COST CONSULTING:

PM&C

# ADAMS STREET BRANCH LIBRARY : DESIGN SCHEDULE







# BPL COMPASS: STRATEGIC PLAN

- User centered institution
- Community gathering
- Special collections
- Center of knowledge
- Children & teens
- Access & innovation
- Sustainable organization
- Fun



## ADAMS STREET: SELECT PROJECT GOALS\*

1. IMPROVED SERVICE VIA A SINGLE FLOOR BUILDING
2. SENSITIVITY TO BUDGET, SCHEDULE & COMMUNITY LOGISTICS
3. VISIBILITY/ SECURE SIGHT LINES WITHIN LIBRARY
4. CAPTURING OUTDOOR SPACE / OUTDOOR PROGRAM
5. TRANSPARENCY AND INCLUSIVITY (ABILITY TO SEE ACTIVITIES OF THE LIBRARY FROM THE EXTERIOR)
6. ADJACENCIES THAT SUPPORT BPL PROGRAMS AND GOALS
7. APPROPRIATE ACOUSTICS
8. AMENITY SPACES: COMMUNITY ROOM, FAMILY SPACE
9. COMPATIBILITY WITH URBAN CONTEXT
10. ACCOMMODATE NEW PROGRAM ELEMENTS
11. SUSTAINABILITY THROUGH DAYLIGHTING
12. UPGRADE TECHNOLOGY AND ADAPTABILITY OF SYSTEMS FOR FUTURE TECHNOLOGY

\* OUTCOMES OF SURVEY , WORKING GROUP MEETINGS AND CAC MEETINGS

PROGRAM

ADAMS STREET BRANCH LIBRARY

# PROGRAM SUMMARY

TOTAL NET:       **12,966 SF**  
TOTAL GROSS:   **13,900 SF**  
TOTAL EXISTING:   7,200 SF

## ENTRANCE ZONE

VESTIBULE  
LOBBY  
BORROWER SERVICE DESK  
SELF PICK-UP HOLDS  
SELF CHECKOUT KIOSK  
FRIENDS BOOK SALE SHELF  
BOOK DROP OFF

**1,047 SF**

## ADULT SECTION

ADULT COLLECTION  
ADULT SEATING AREA  
ADULT COMPUTER  
IMMIGRATION INFORMATION  
PRINT STATION  
COMPUTER CATALOG STATION

**3,086 SF**

## CHILDREN'S SECTION

CHILDREN'S COLLECTION  
CHILDREN'S AREA  
CHILDREN'S COMPUTER  
CHILDREN'S LIBRARIAN DESK  
CHILDREN'S BATHROOM  
CHILDREN'S STORAGE  
TWEEN SPACE

**3,081 SF**

## TEEN SECTION

TEEN COLLECTION  
TEEN SEATING AREA

**1,535 SF**

## SHARED SERVICE

COMMUNITY ROOM  
MEETING ROOMS  
LAPTOP AREA  
COPY/PRINT SERVICE  
CASUAL SEATING  
PUBLIC RESTROOMS  
KITCHENETTE  
FURNITURE STORAGE  
MUSIC ROOM

**2,339 SF**

## ADMINISTRATION

BRANCH LIBRARIAN'S OFFICE  
STAFF BREAK ROOM  
STAFF RESTROOM  
STAFF WORKROOM

**809 SF**

## BUILDING SERVICES

MECHANICAL ROOM  
ELECTRICAL ROOMS  
IT/AV ROOM  
GENERAL STORAGE  
FACILITIES STORAGE  
CUSTODIAL OFFICE  
CUSTODIAL CLOSET

**791 SF**



PLAN LAYOUT



OAKTON AVE

DELMONT ST.

ADAMS STREET

CURRENT PLAN 03.05.2019



## IMPROVEMENTS OVER EXISTING BUILDING:

6,700 additional sf of building area  
13,900 sf Total

- Accessible front door on Adams Street
- Dedicated drop-off
- Easier access to collections
- High-performance sustainable systems
- Expanded capacity in Community Room
- Study room
- Conference room
- Music room
- Additional computer work stations



# SUSTAINABILITY

- LEED Silver minimum
- No surface parking
- Stormwater Management
  - Minimize size of retention tank
  - Rain gardens

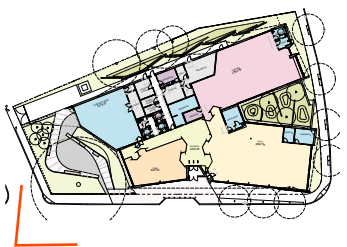


BUILDING EXTERIOR





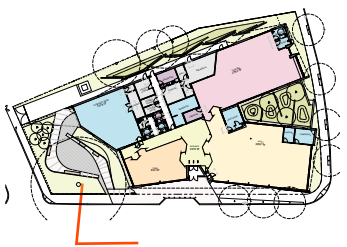
ADAMS STREET AT OAKTON AVE CORNER - LOOKING SOUTH TOWARD ENTRY







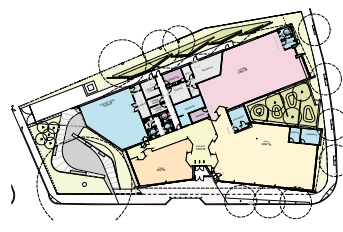
ADAMS STREET - LOOKING EAST AT ENTRY







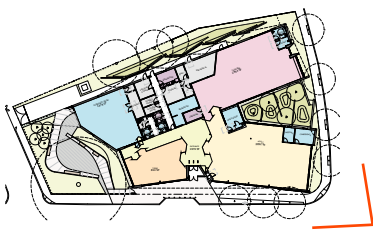
ADAMS STREET - LOOKING NORTHEAST TOWARD ENTRY







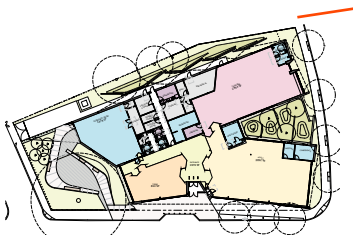
ADAMS STREET AT DELMONT STREET CORNER - LOOKING NORTH TOWARD ADULT SPACE







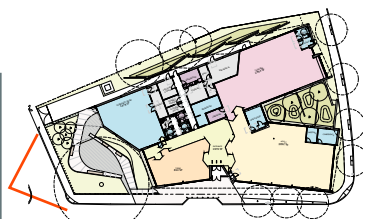
DELMONT STREET - LOOKING NORTH TOWARD CHILDRENS' AREA





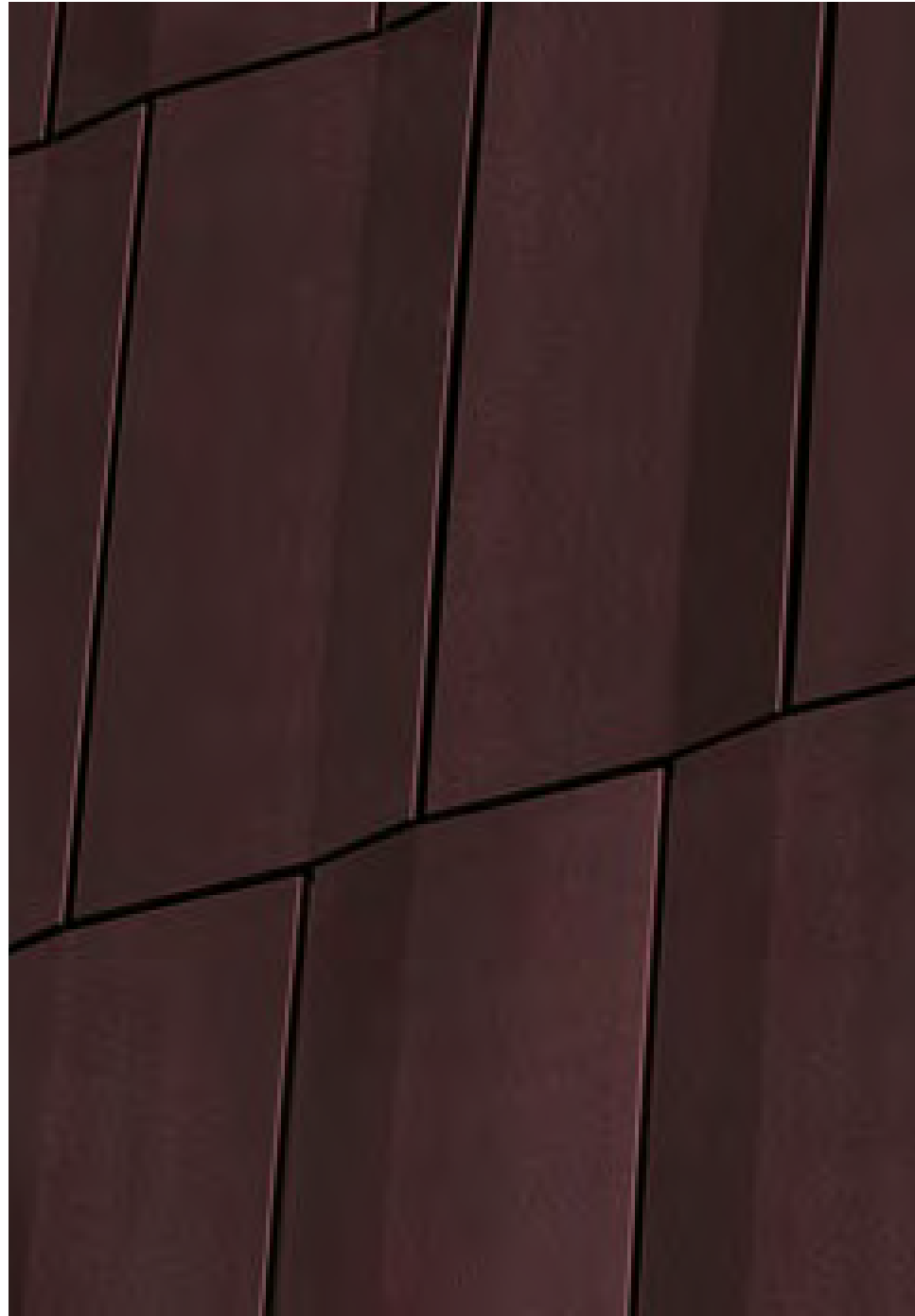


OAKTON AVE - LOOKING SOUTH TOWARD READING GARDEN





DARK GLAZED TERRACOTTA



LIGHT GLAZED TERRACOTTA



COPPER



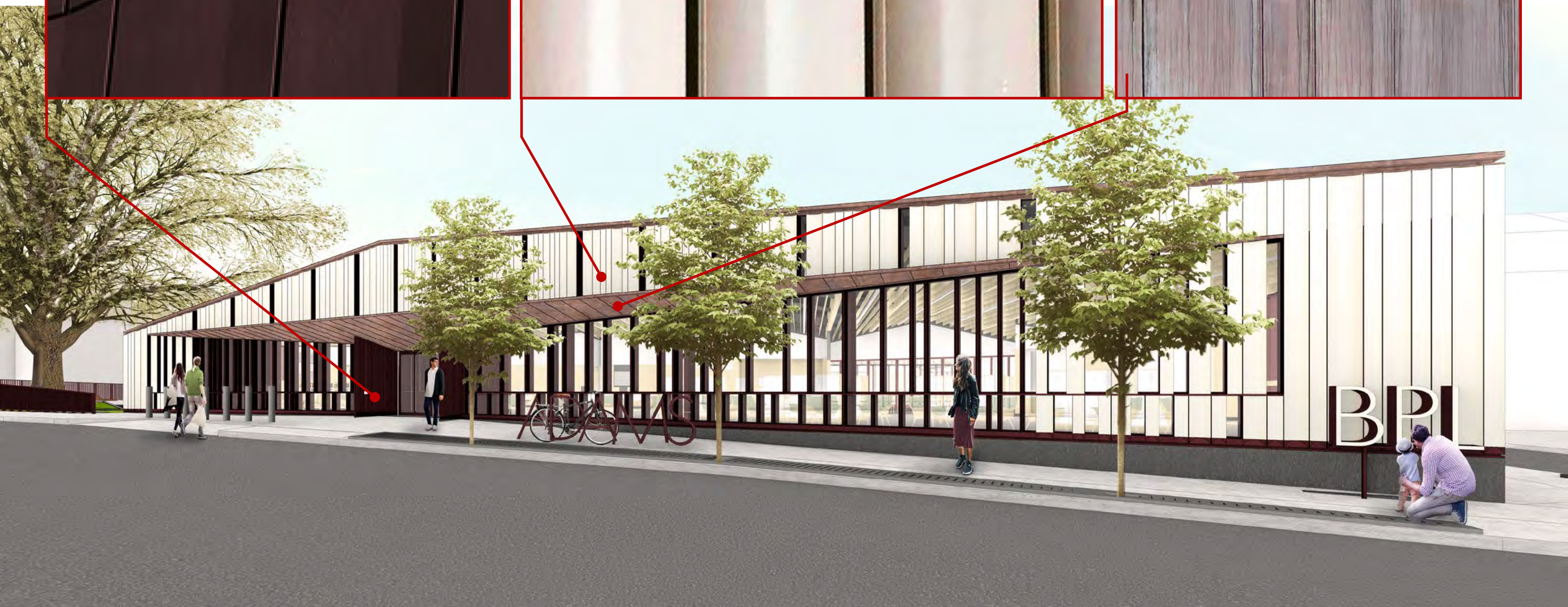
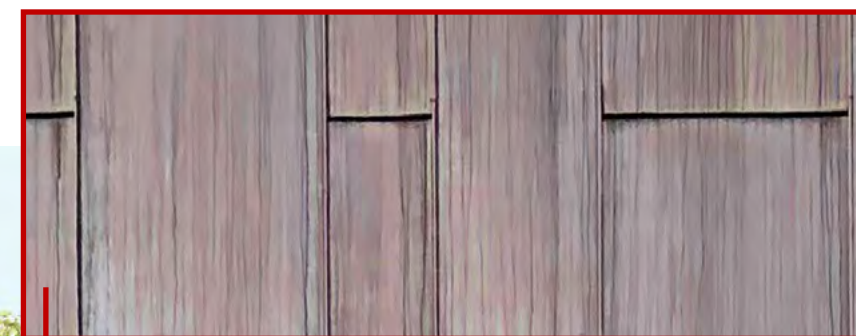
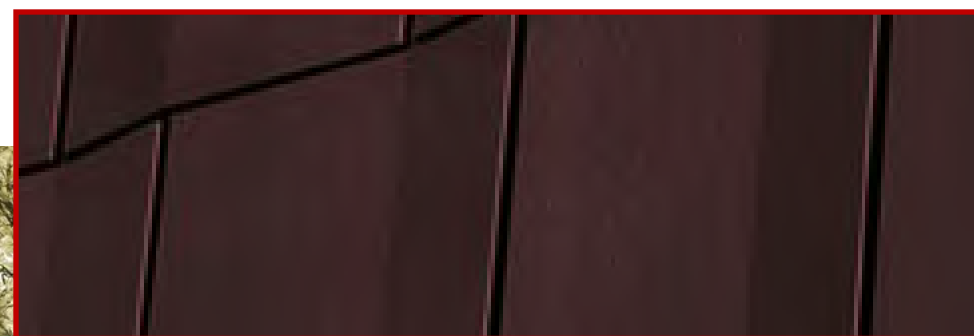
MATERIAL PALETTE



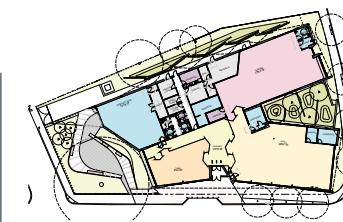
DARK GLAZED TERRACOTTA

LIGHT GLAZED TERRACOTTA

COPPER

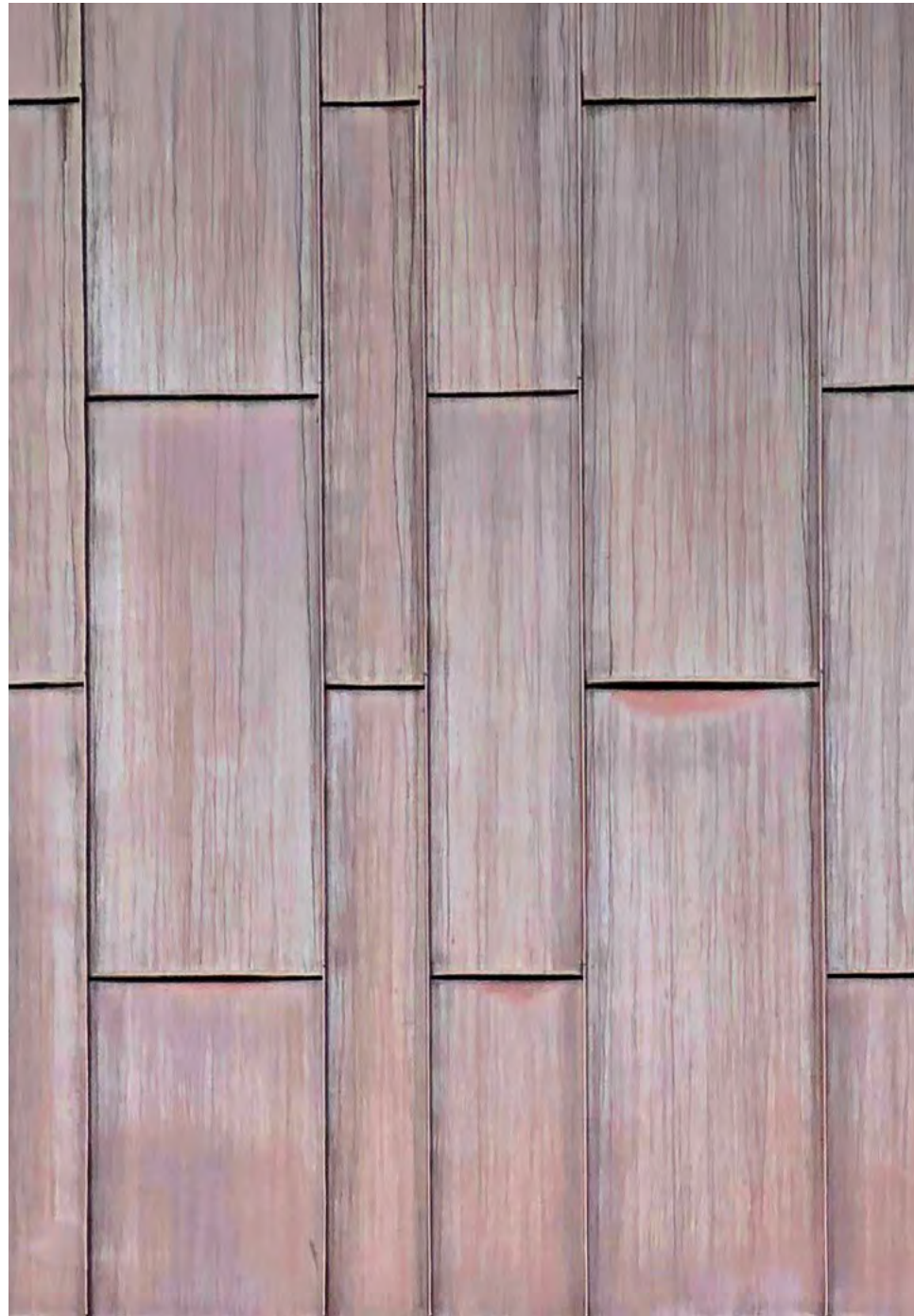


ADAMS STREET - LOOKING NORTHEAST

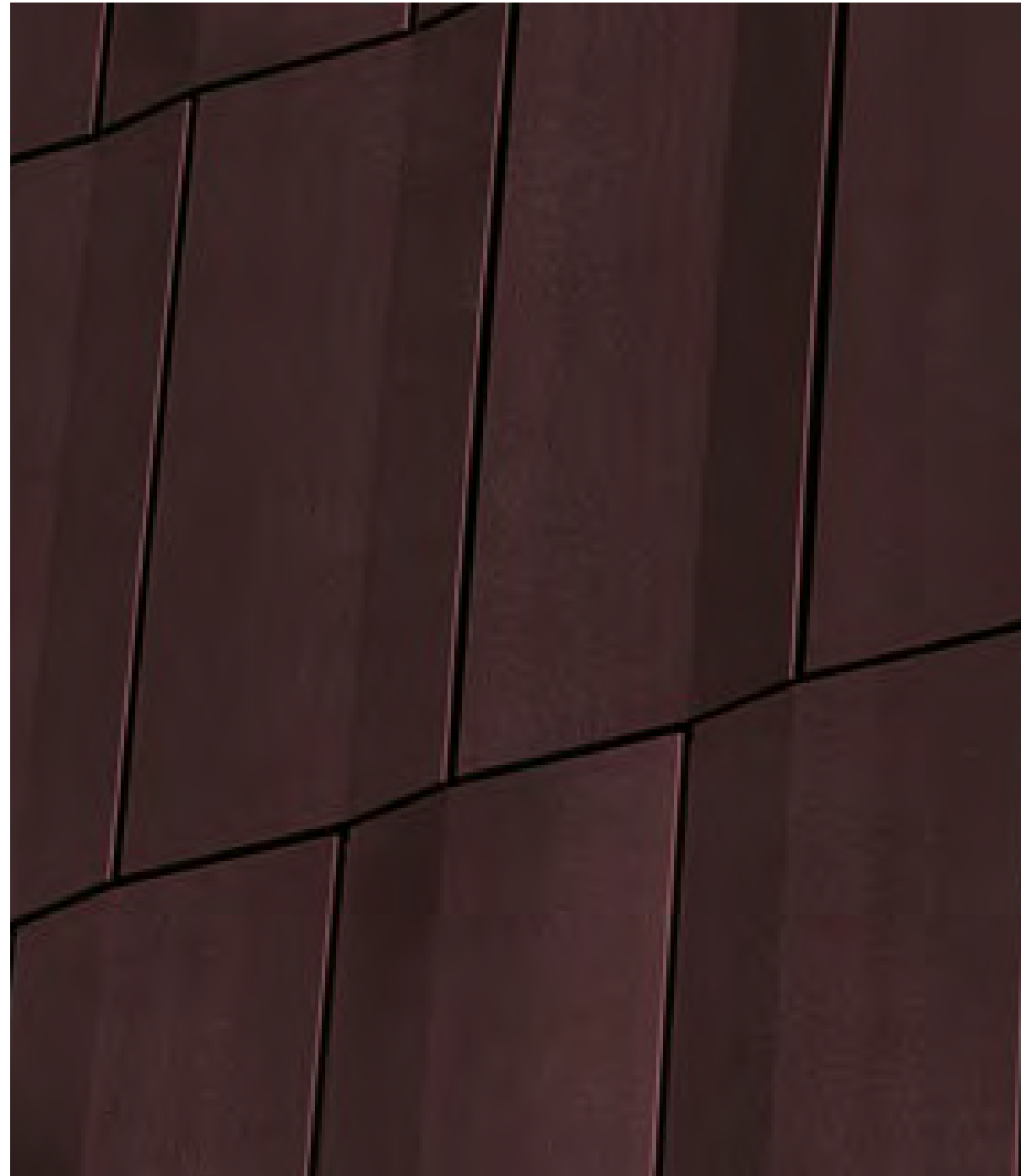




COPPER



DARK GLAZED TERRACOTTA



UNGLAZED TERRACOTTA



MATERIAL PALETTE



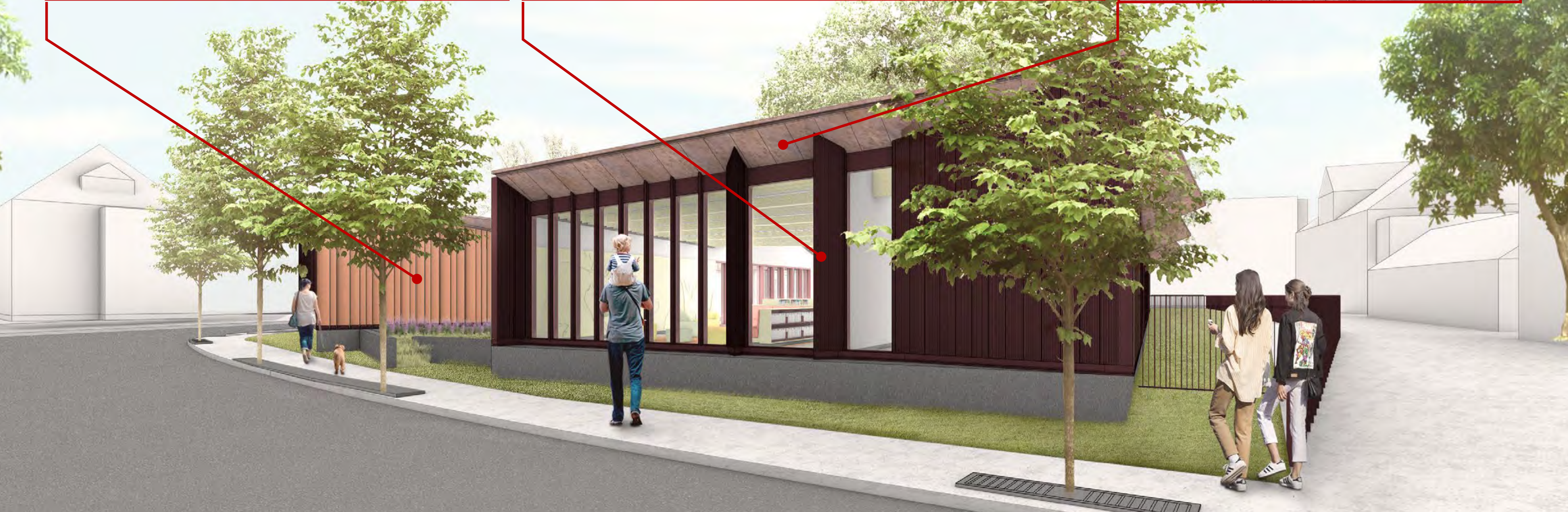
UNGLAZED TERRACOTTA



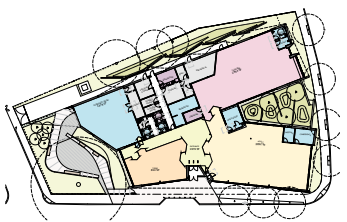
DARK GLAZED TERRACOTTA



COPPER



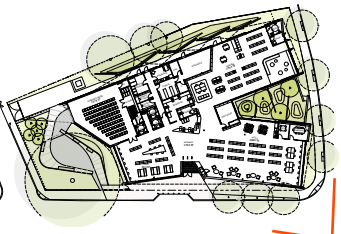
ADAMS STREET AT DELMONT STREET CORNER - LOOKING NORTH







ENTRY - ADAMS STREET FACADE



READING GARDEN



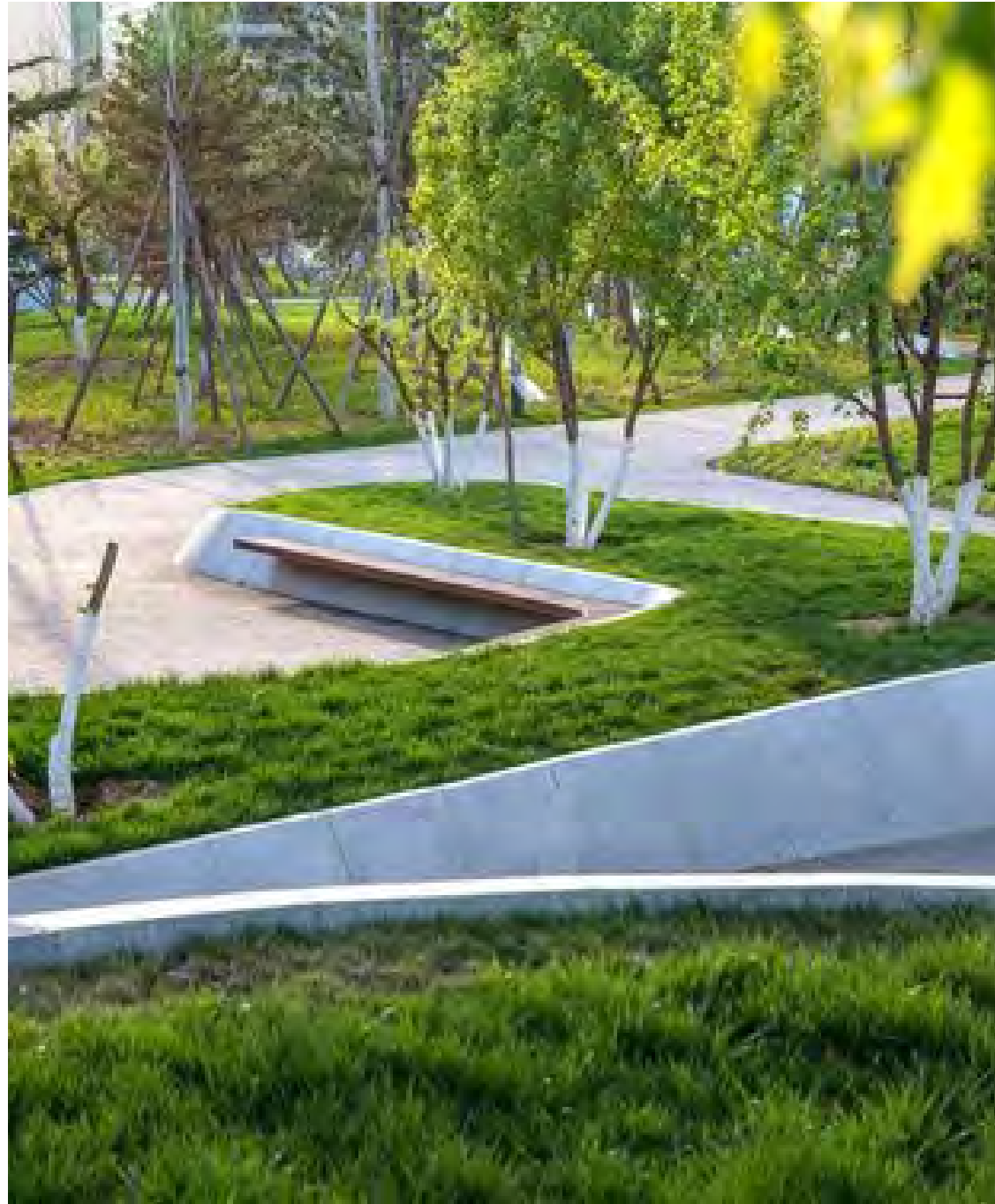








# PRECEDENTS





RAIN GARDENS





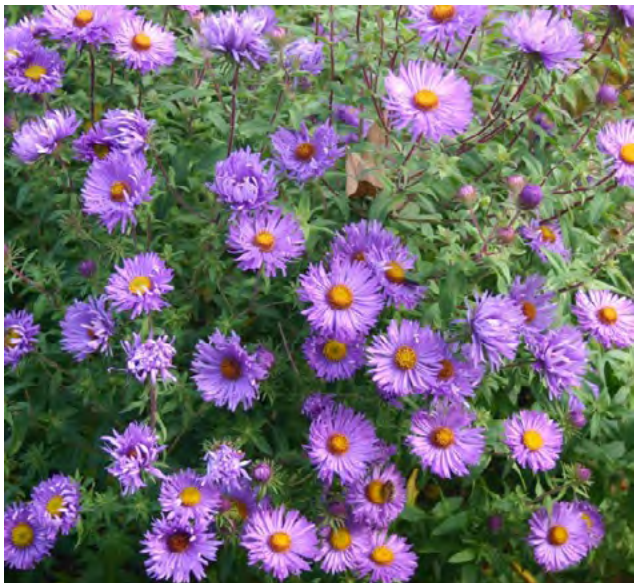




Rain Garden -Planting Palette



**Blue Ice bluestar**  
*Amsonia 'Blue Ice'*



**Purple Dome Dwarf New England Aster**  
*Aster novae-angliae 'Purple Dome'*



**Sensitive Fern**  
*Onoclea sensibilis*



**Miss Manners Obedient Plant**  
*Physostegia 'Miss Manners'*



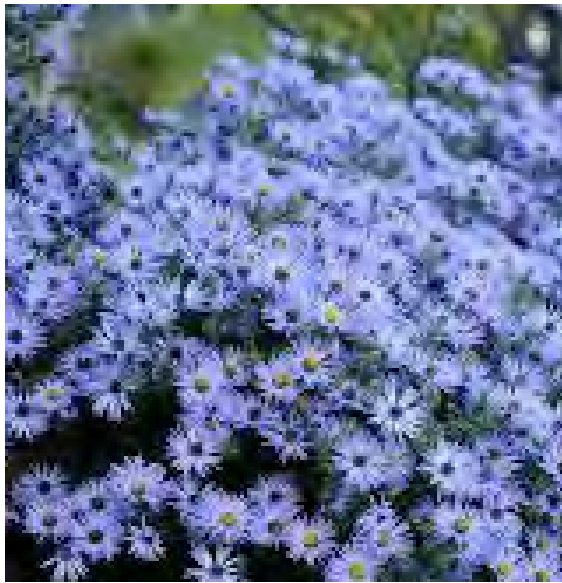
**Poverty Rush**  
*Juncus tenuis*



**Creme Brulee Tickseed**  
*Coreopsis 'Creme Brulee'*



**Little Lemon Dwarf Goldenrod**  
*Solidago 'Little Lemon'*



**October Skies' Aromatic Aster**  
*Aster oblongifolius 'October Skies'*



**Appalachian Blazing Star**  
*Liatris microcephala*



**Prarie Sedge**  
*Carex bicknellii*







INTERIOR

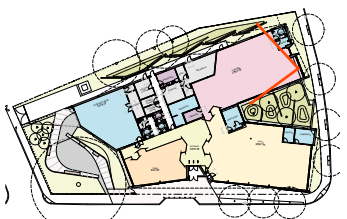








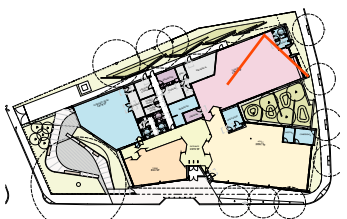
CHILDREN'S STORYTIME - LOOKING NORTH







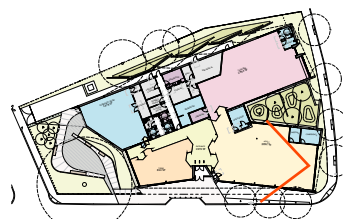
CHILDREN'S STORYTIME - LOOKING WEST







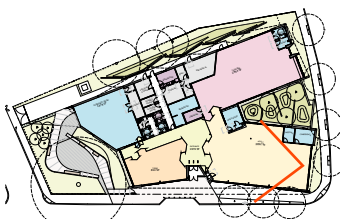
MUSIC ROOM - LOOKING SOUTH







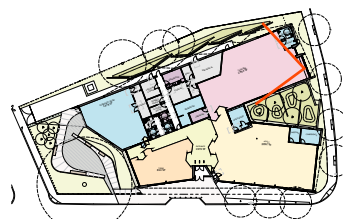
ADULT SECTION - LOOKING NORTH







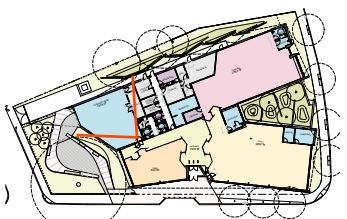
TEEN SECTION - LOOKING NORTH







COMMUNITY ROOM - LOOKING FROM ENTRY





# ADAMS STREET: SELECT PROJECT GOALS

1. VISIBILITY/ SECURE SIGHT LINES WITHIN LIBRARY
2. CAPTURING OUTDOOR SPACE / OUTDOOR PROGRAM
3. TRANSPARENCY AND INCLUSIVITY (ABILITY TO SEE ACTIVITIES OF THE LIBRARY FROM THE EXTERIOR)
4. ADJACENCIES THAT SUPPORT PROGRAMS AND GOALS
5. COMPATIBILITY WITH ADAMS STREET NEIGHBORHOOD
6. SUSTAINABILITY TARGET LEED SILVER



# QUESTIONS AND COMMENTS



THANK YOU