

FANEUIL
BRANCH
PUBLIC
LIBRARY

Faneuil Branch Library

Community Meeting #2

March 4, 2020

CITY OF BOSTON

Martin J. Walsh, Mayor

Patrick I. Brophy, Chief of Operations

CITY OF BOSTON PUBLIC FACILITIES DEPARTMENT

Patricia M. Lyons, Director

BOSTON PUBLIC LIBRARY

LOUDENS ELLO ARCHITECTURE



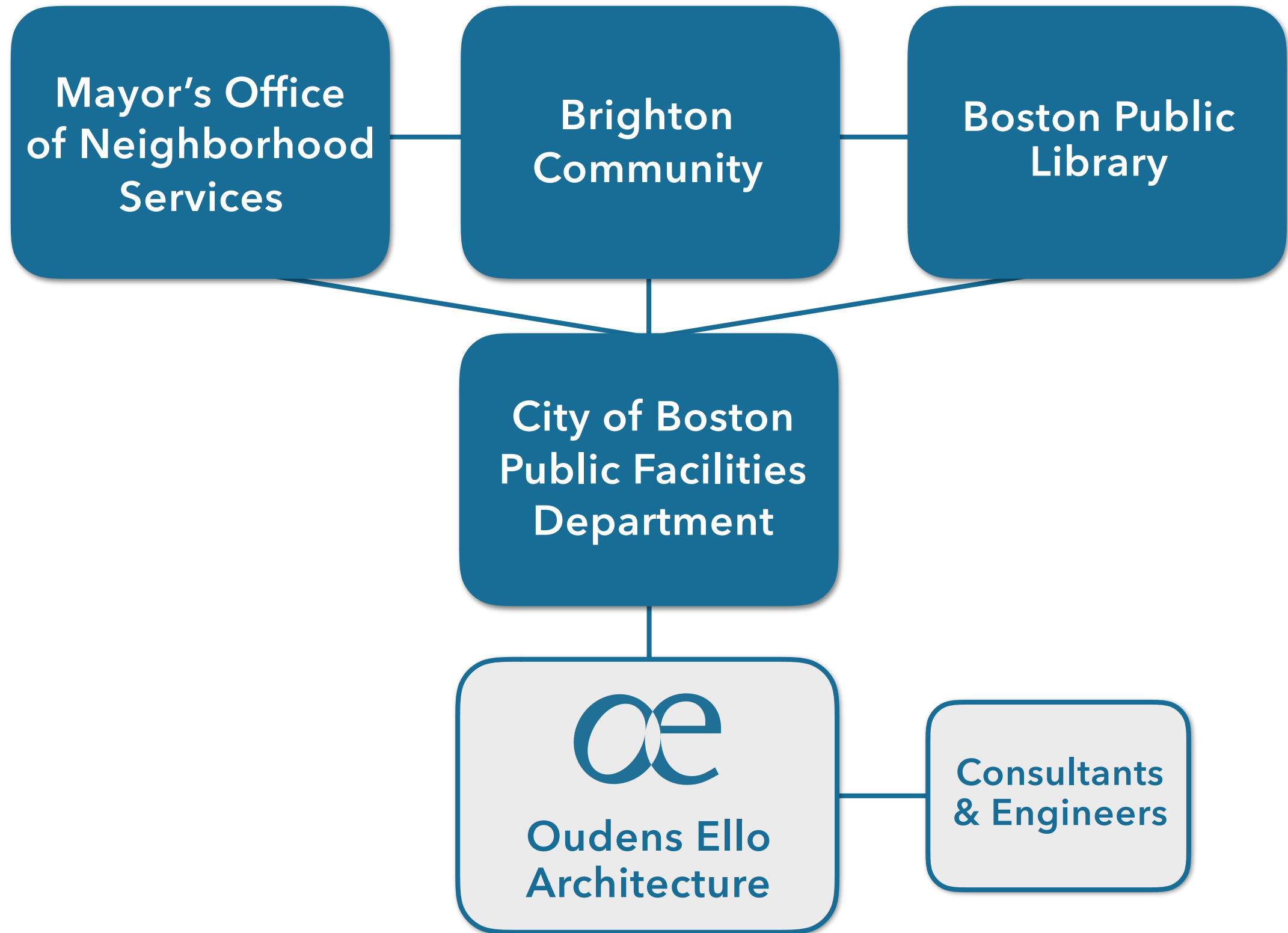
Agenda

1. Project Team
2. Schedule
3. Community Meeting #1 Recap & Project Goals
4. Initial Design Concepts
 - A. Accessibility
 - B. Building Layout
 - C. Building Massing
5. Discussion
6. Feedback Contact



Project Team

Project Team



Oudens Ello Architecture



Schedule



Estimated Schedule

<i>MILESTONE</i>	<i>DATE</i>
Community Meeting #1	October 2019
Community Meeting #2	March 2020 (Tonight)
Community Meeting #3	Estimated Summer 2020
Library Closure	Estimated Late 2020 / Early 2021
Construction Start	Estimated Early 2021



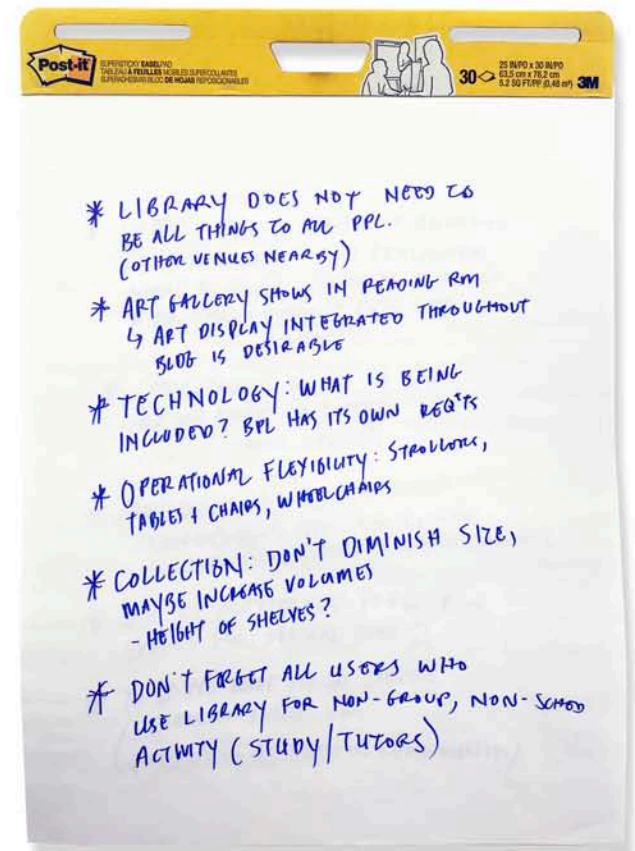
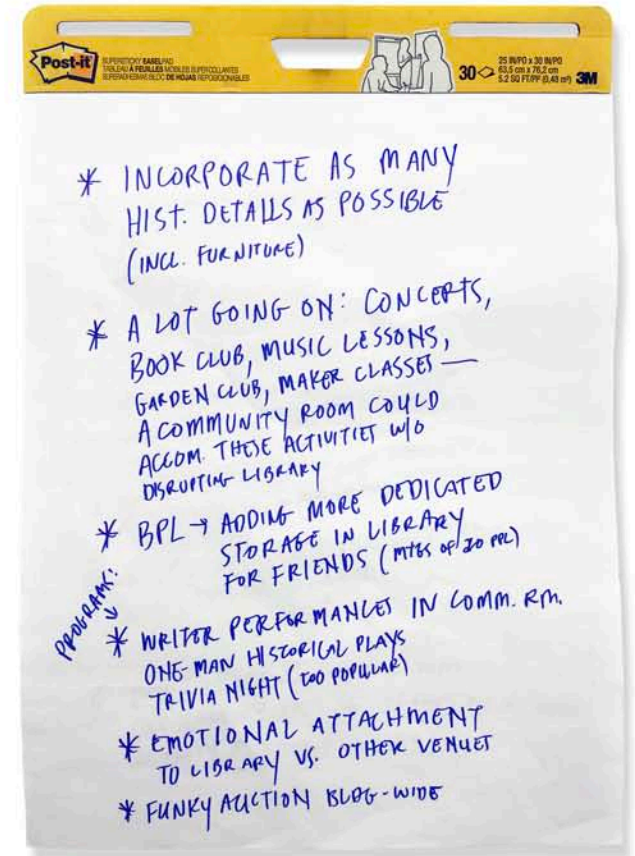
Community Meeting #1 Recap



Community Feedback

FEEDBACK FROM COMMUNITY MEETING #1

- Incorporate historic details
- Small size and intimacy make this library special
- Maintain central staffed service desk that fosters personal interaction
- Create a community room that can accommodate a wide range of activities and is operationally flexible
- Consider the acoustics of the community room, the current space has great proportions for music
- Retain green space wherever possible



Project Goals

FROM 2015 PROGRAMMING STUDY

Accessibility: Accessible entrance and restrooms w/ all patron services on one level

Preservation: Maintain historic character of exterior and interior spaces

Technology: Upgrade technology and adaptability of systems

Collections: Collection that is responsive to community needs

Community Room: Create a space that will allow for programs for all ages at all times of day

Children's Spaces: Incorporate high quality spaces and programs for children

Building Systems: Integrate modern, energy efficient building systems

Finishes & Furnishings: Update interior finishes and furniture

Project Goals

FROM 2015 PROGRAMMING STUDY

Accessibility: Accessible entrance and restrooms w/ all patron services on one level

Preservation: Maintain historic character of exterior and interior spaces

Technology: Upgrade technology and adaptability of systems

Collections: Collection that is responsive to community needs

Community Room: Create a space that will allow for programs for all ages at all times of day

Children's Spaces: Incorporate high quality spaces and programs for children

Building Systems: Integrate modern, energy efficient building systems

Finishes & Furnishings: Update interior finishes and furniture

ADDED DURING DESIGN PHASE

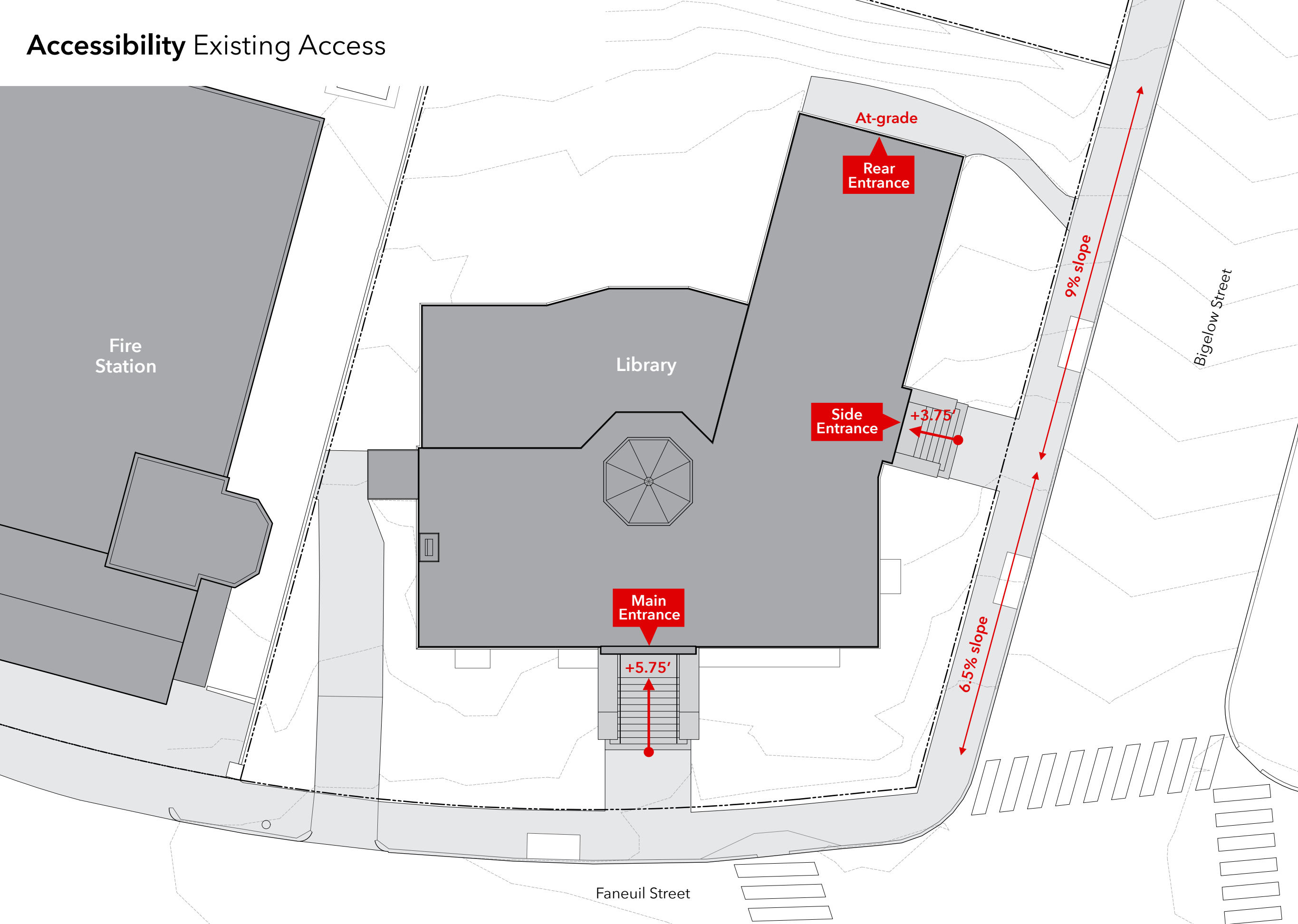
Sightlines: Optimize visibility and clear sightlines throughout library

Sustainability: Maximize energy efficiency, daylighting, and interior comfort

Initial Design Concepts



Accessibility Existing Access



Accessibility Existing Access



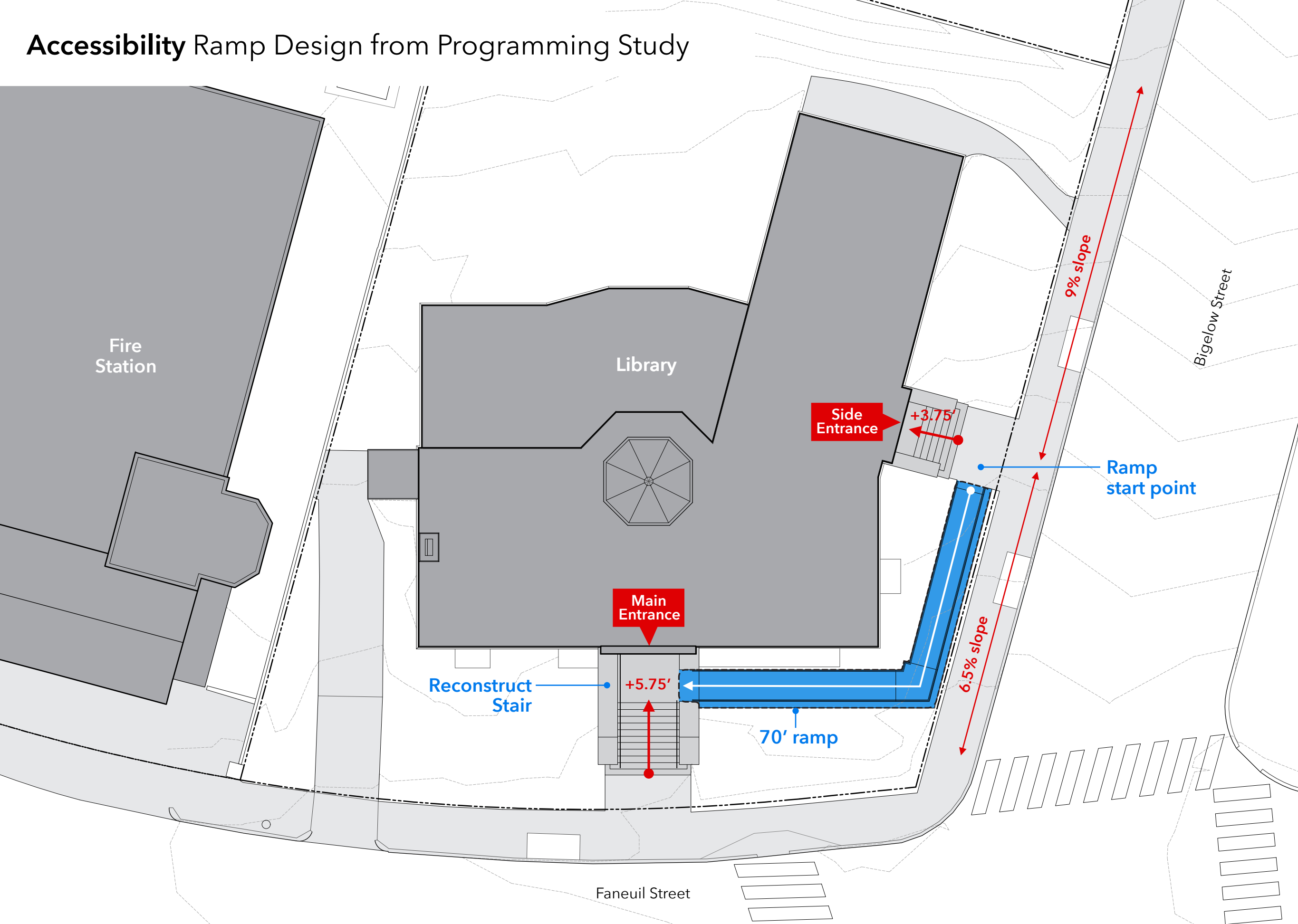
Accessibility Existing Access



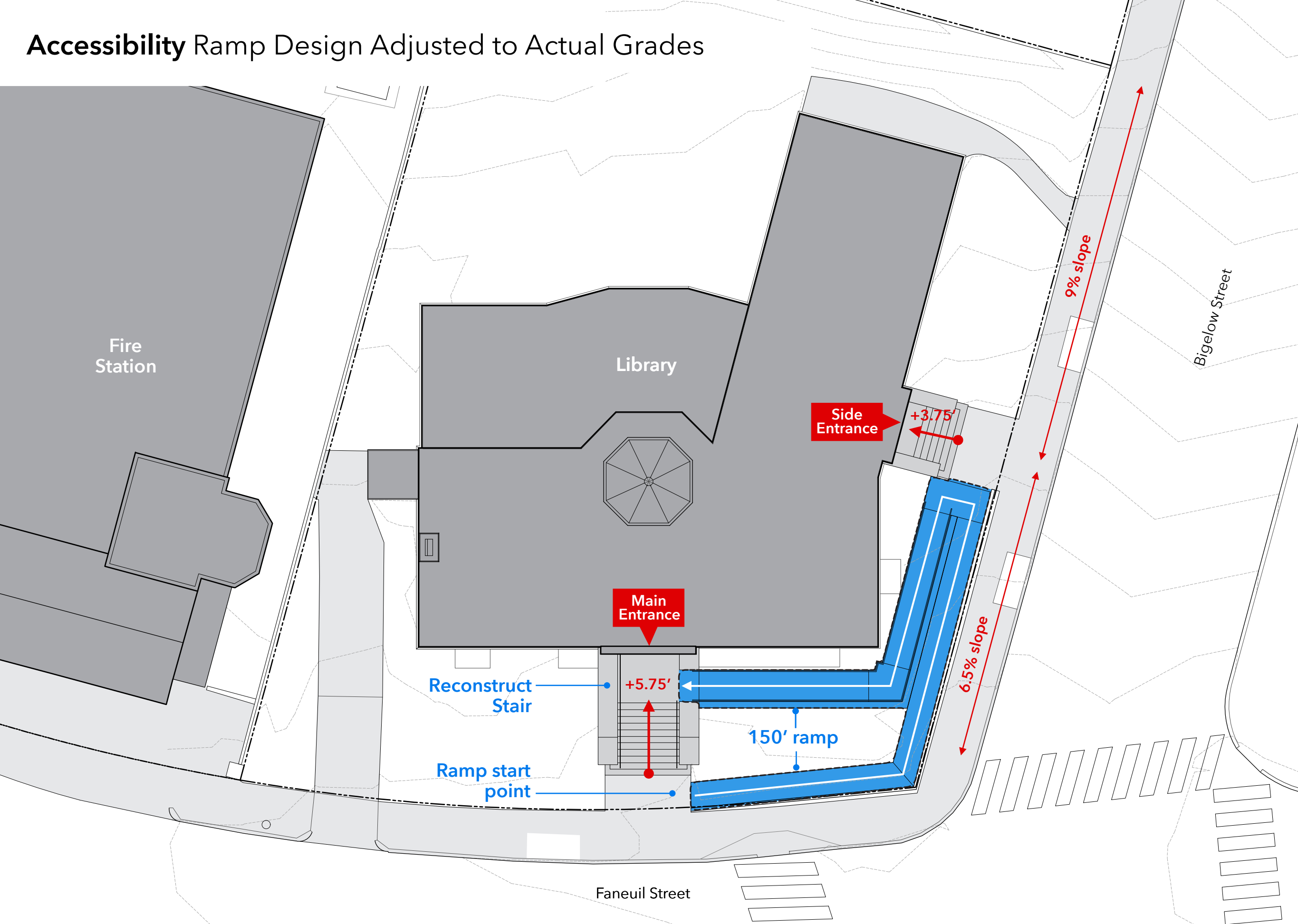
Accessibility Existing Access



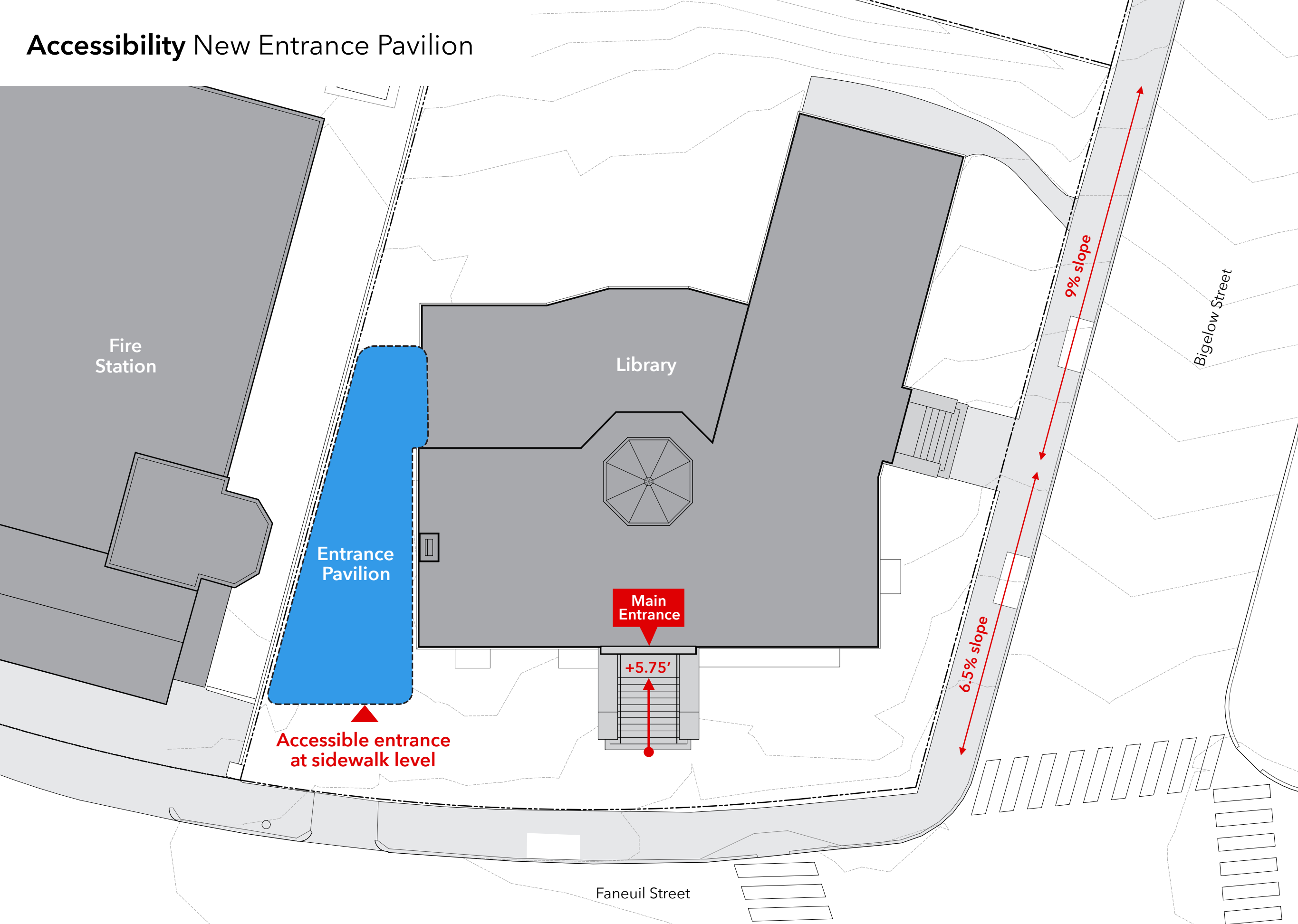
Accessibility Ramp Design from Programming Study



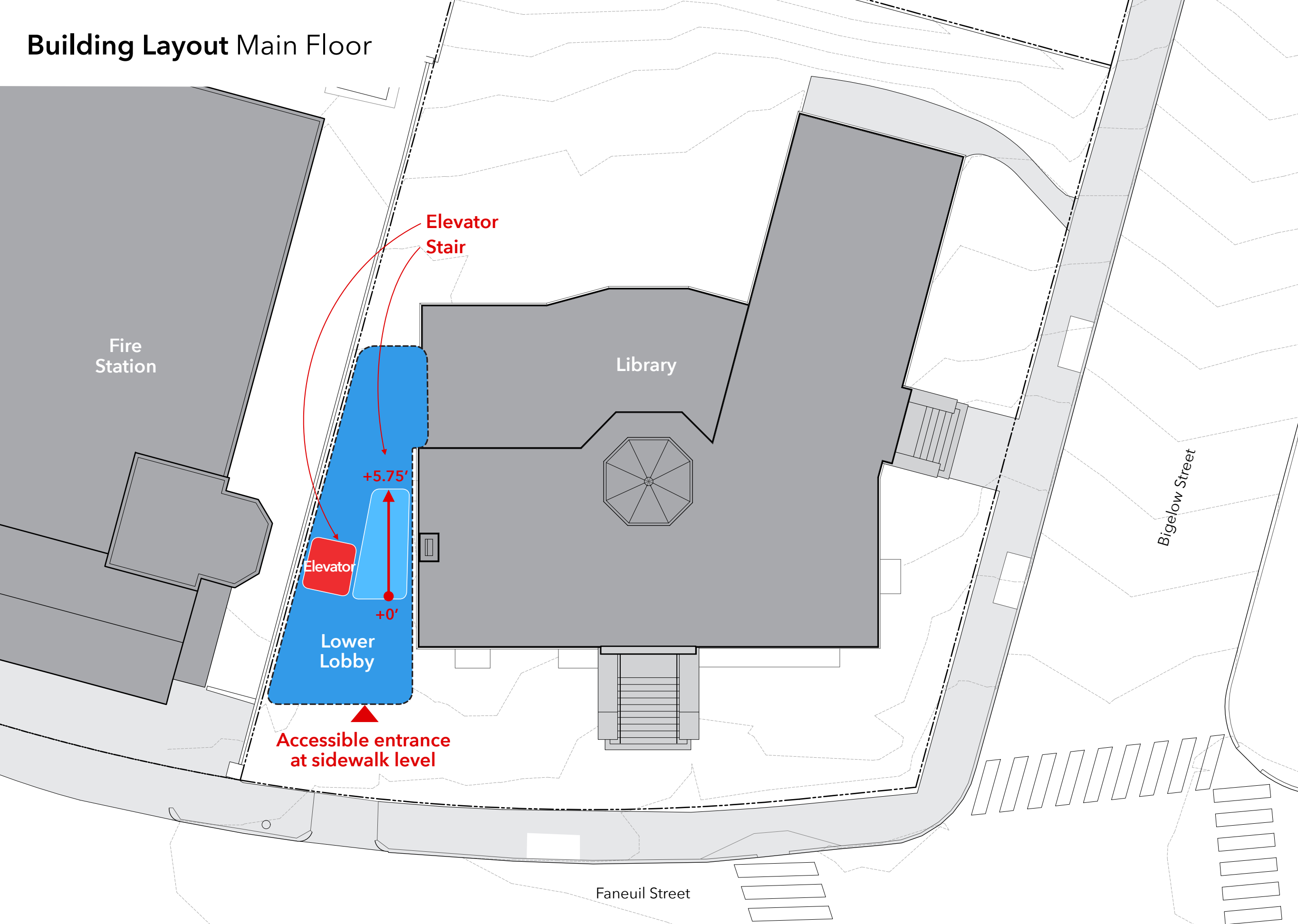
Accessibility Ramp Design Adjusted to Actual Grades



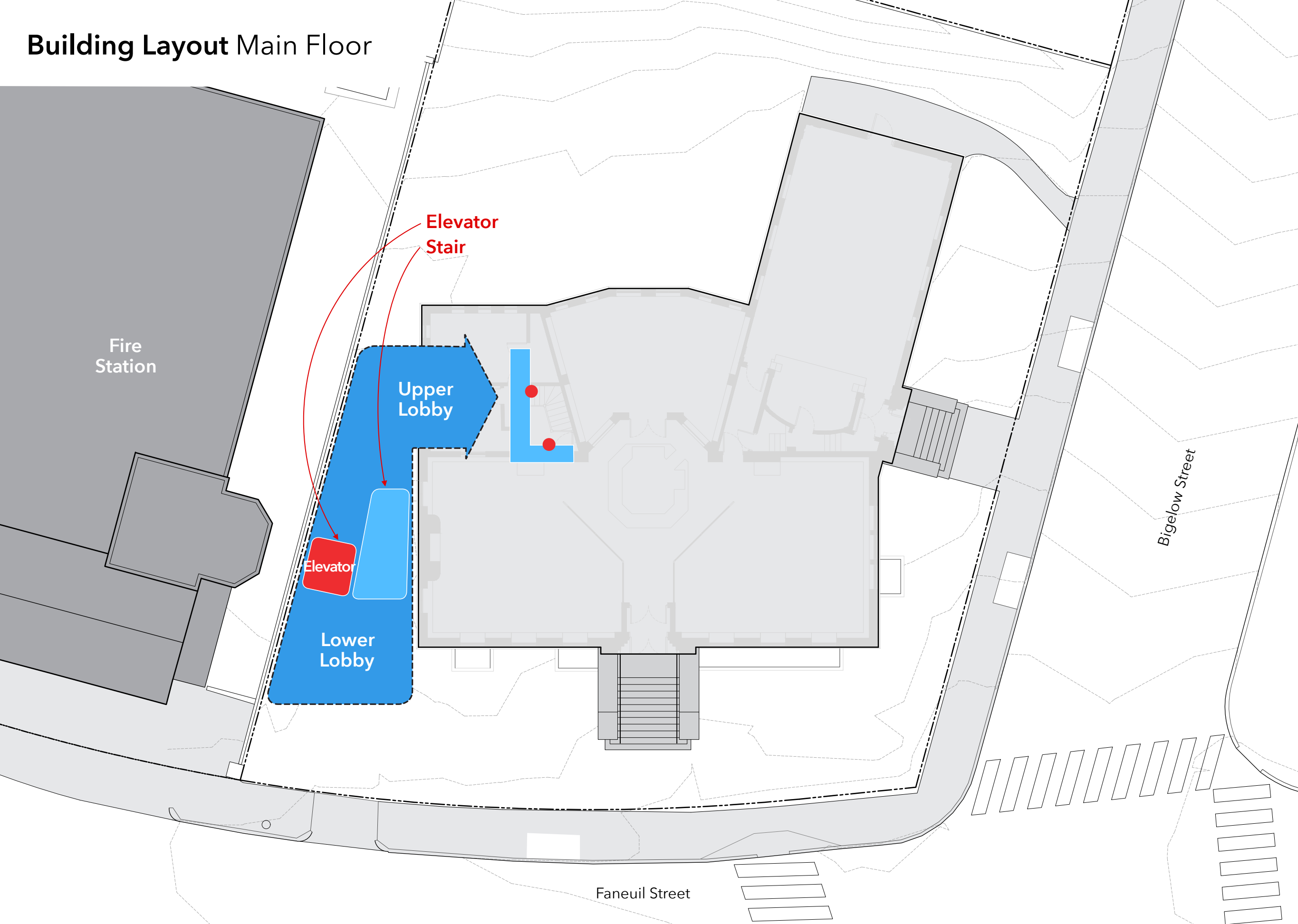
Accessibility New Entrance Pavilion



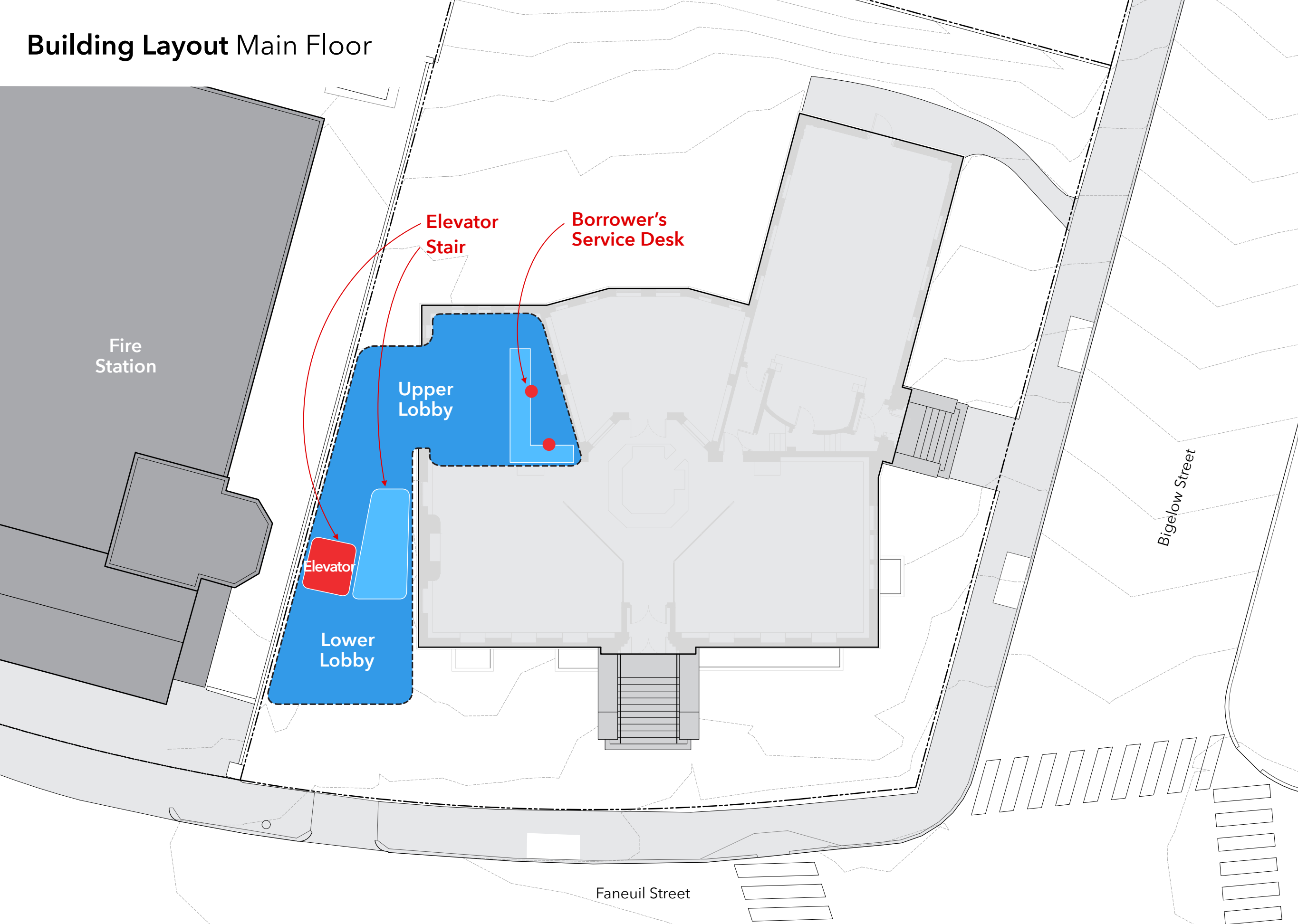
Building Layout Main Floor



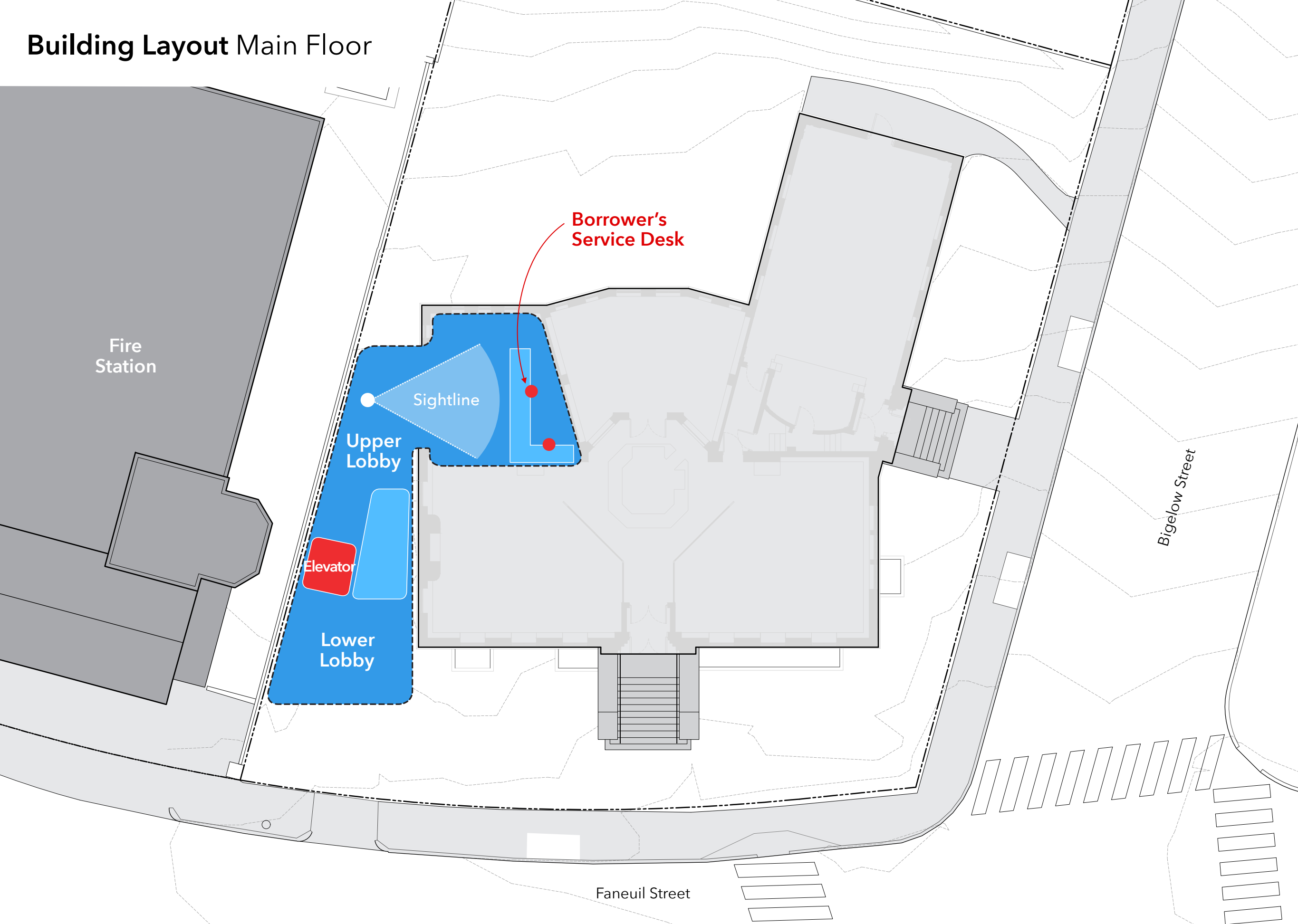
Building Layout Main Floor



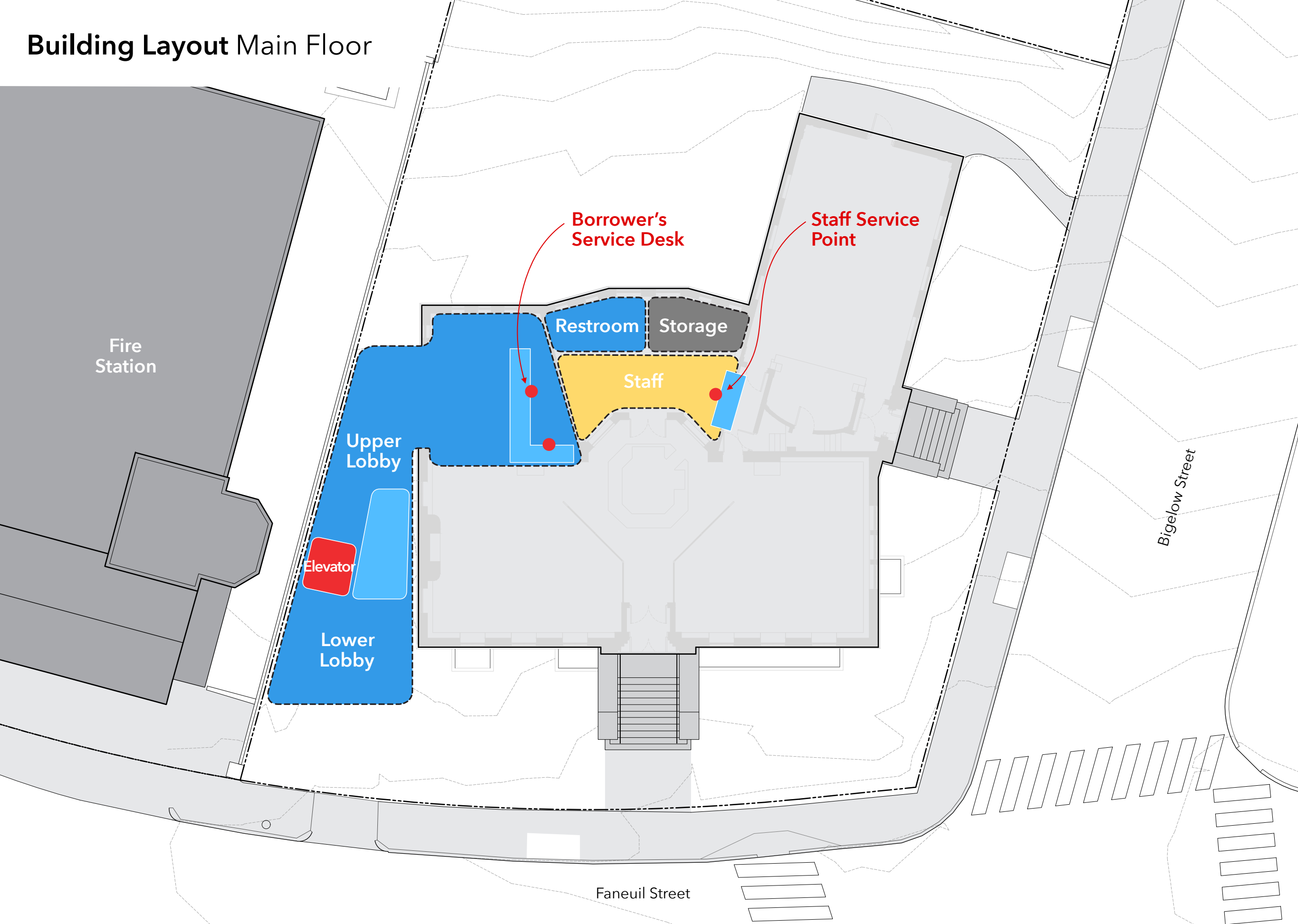
Building Layout Main Floor



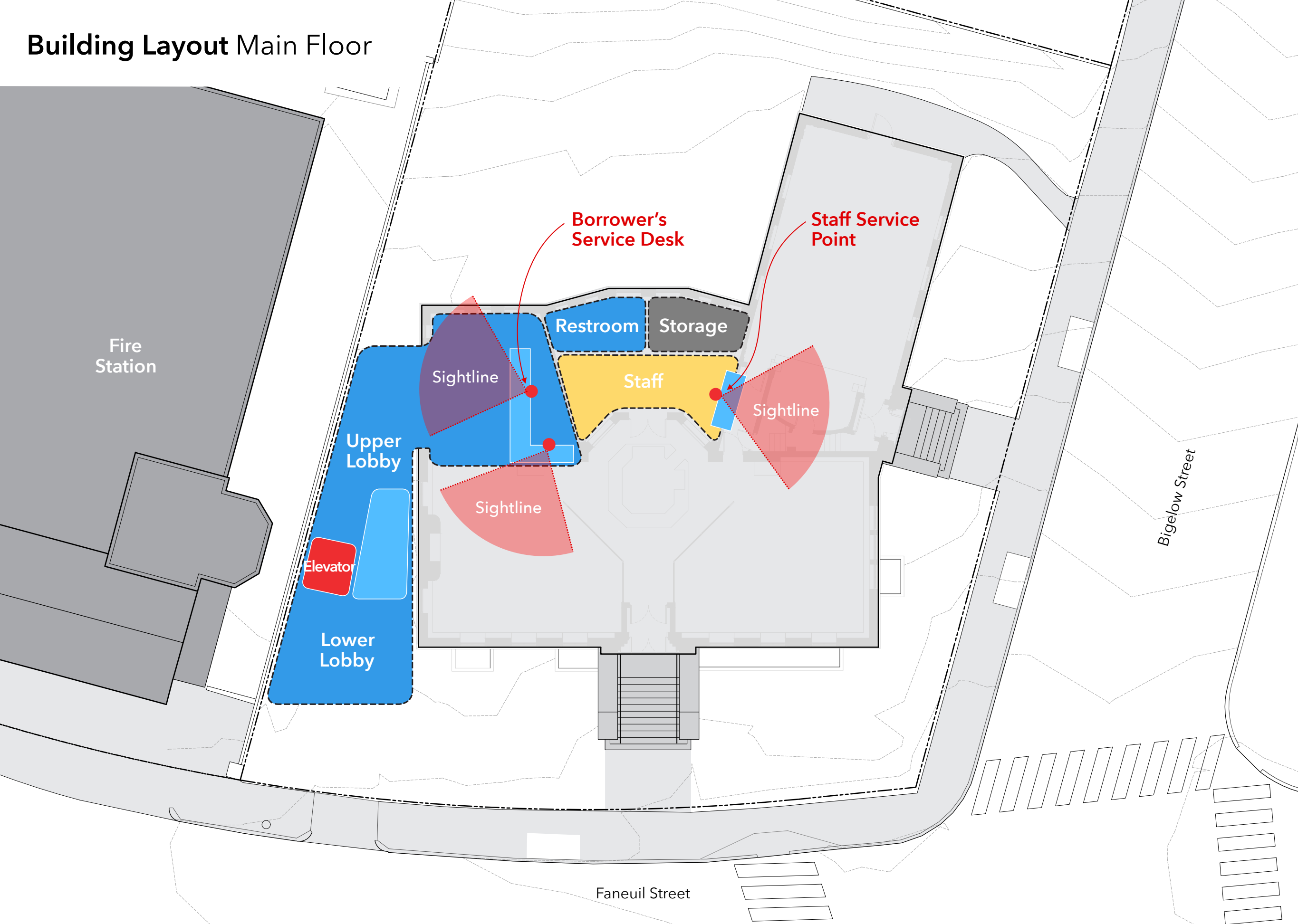
Building Layout Main Floor



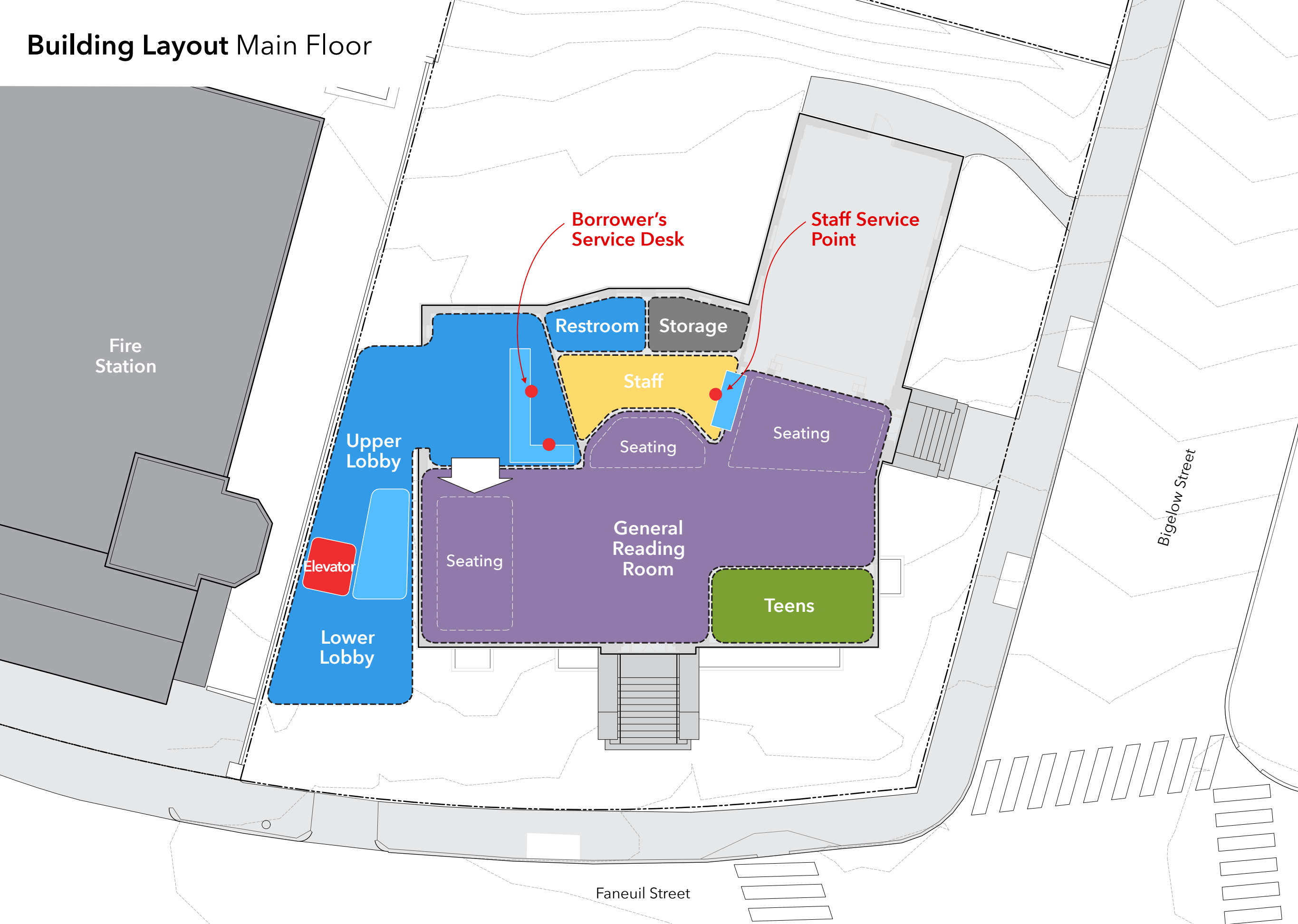
Building Layout Main Floor



Building Layout Main Floor



Building Layout Main Floor



Existing Reading Room Fireplace





Building Layout Main Floor



Building Layout Main Floor



Existing Children's Room Signage Artwork





Building Layout Main Floor



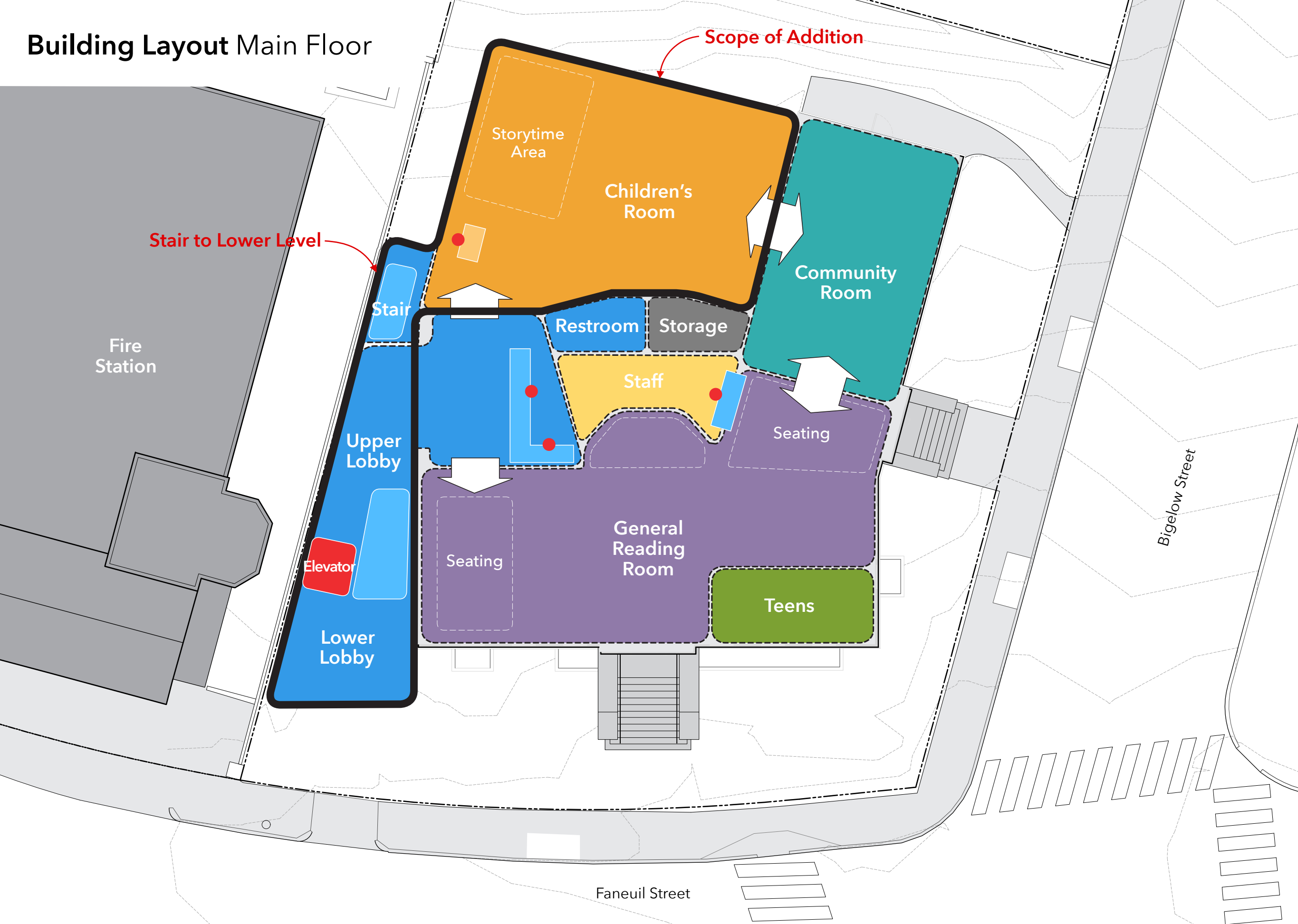
Building Layout Main Floor



Building Layout Main Floor



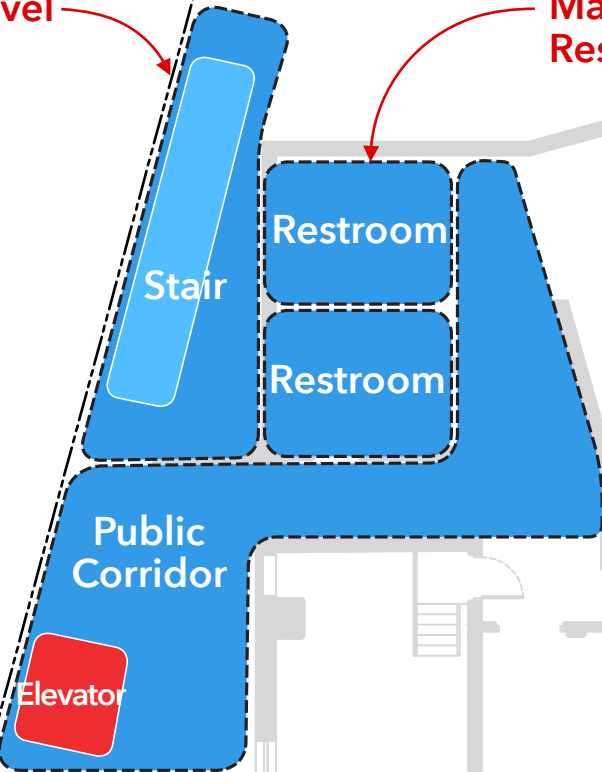
Building Layout Main Floor



Building Layout Lower Floor

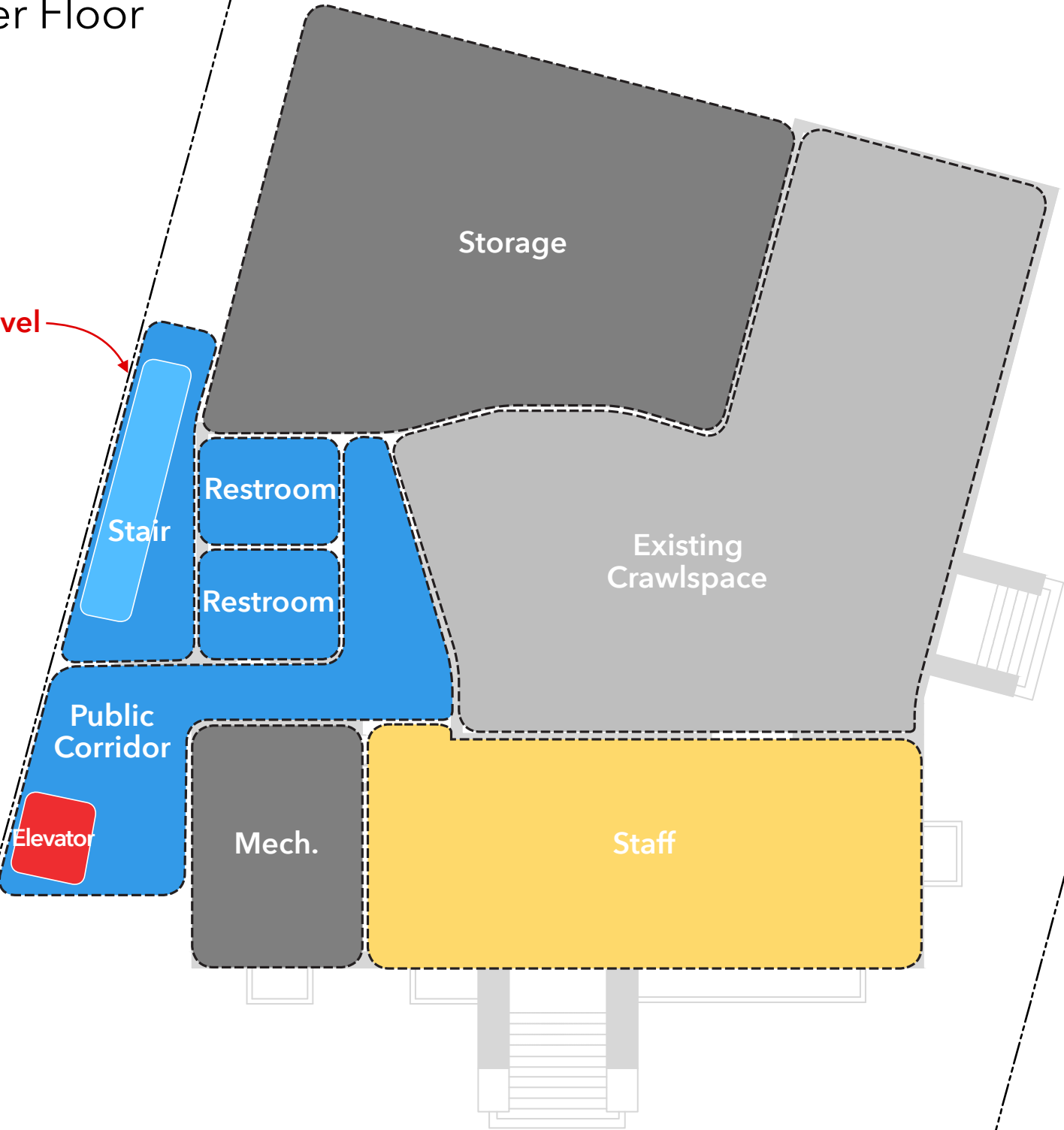
Stair to Lower Level

Main Public Restrooms

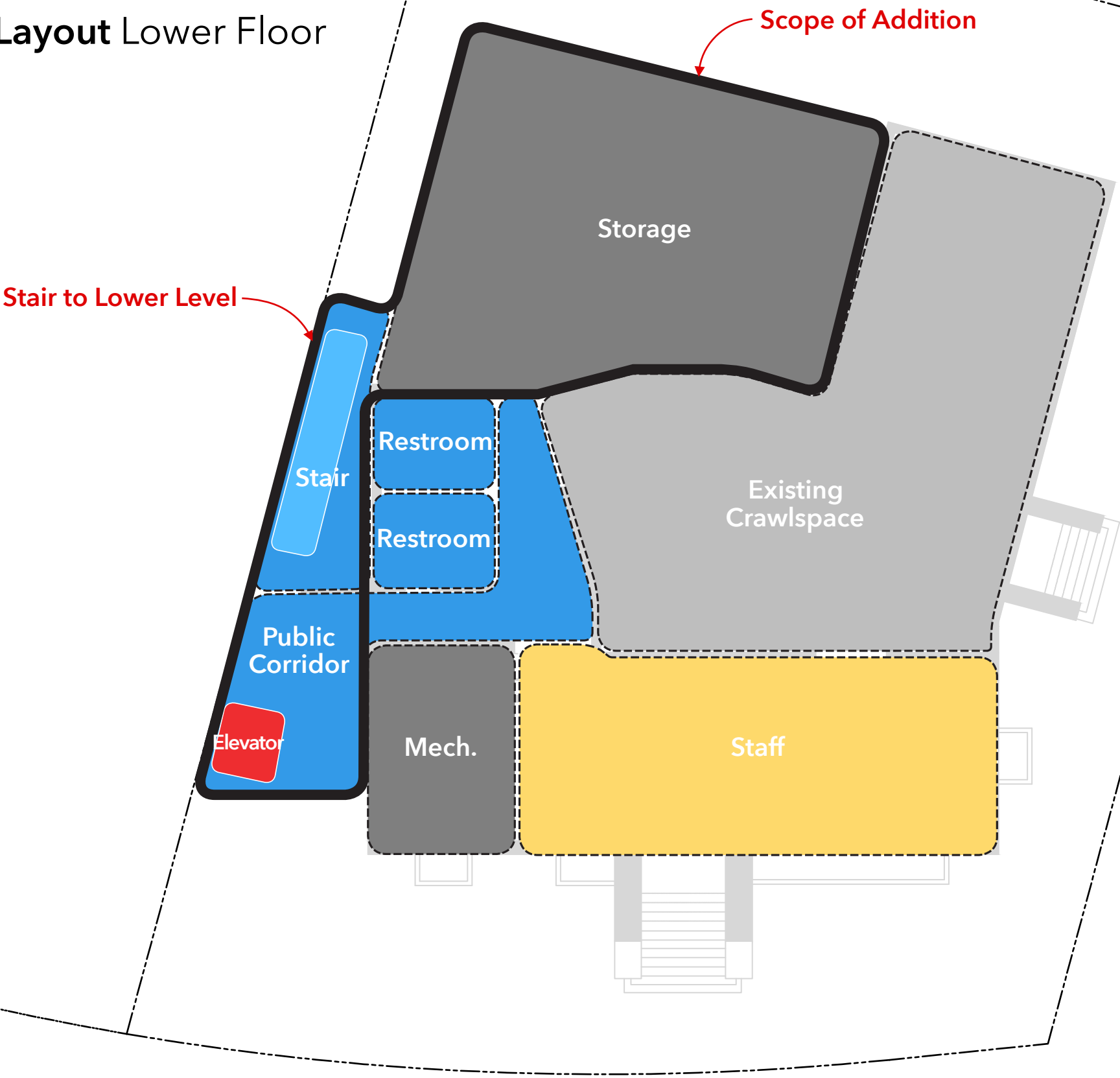


Building Layout Lower Floor

Stair to Lower Level



Building Layout Lower Floor







Building Massing Current Building



Building Massing Current Building with New Entrance Pavilion



Discussion



Thank You

BRONX
PUBLIC
LIBRARY

Feedback?

1. *Leave a suggestion in the Comment Box located in the library*
2. *Provide feedback online using the BPL's Faneuil Project page: <https://www.bpl.org/faneuil-project/>*
3. *Feel free to contact:*
Priscilla Foley, *Director of Neighborhood Services*
pfoley@bpl.org

This presentation and all feedback will be uploaded to the BPL's Faneuil Branch Library project page: <https://www.bpl.org/faneuil-project/>