

McKim Master Plan Update

Community Meeting

Planning Themes

June 3, 2020

Boston Public Library

David Leonard, *President*

City of Boston

Kim Janey, *Mayor*

Dion Irish, *Chief of Operations*

Kerrie Griffin, *Director of Public
Facilities*



**SHEPLEY
BULFINCH**

designLAB architects

STOSS

General Information

Meeting Logistics

- Have a question during the meeting?
- Have a friend that was unable to attend, or did you miss something?
- This meeting is being recorded
- Visit the project page on **bpl.org** for updates!



Click on the chat button  at the bottom of your Zoom window and someone from the project team will respond



No Problem! A recording of the meeting will be posted online to the project page, along with a follow-up survey



A paper survey will also be available at the BPL-to-Go set up at the Central Library



www.bpl.org/mckimmasterplan/



SCAN ME

Agenda

Large Group Session

McKim Building Master Plan Overview

Community Meetings Recap

McKim Today: Key Planning Themes

Dartmouth Street Plaza

New McKim Program Opportunities

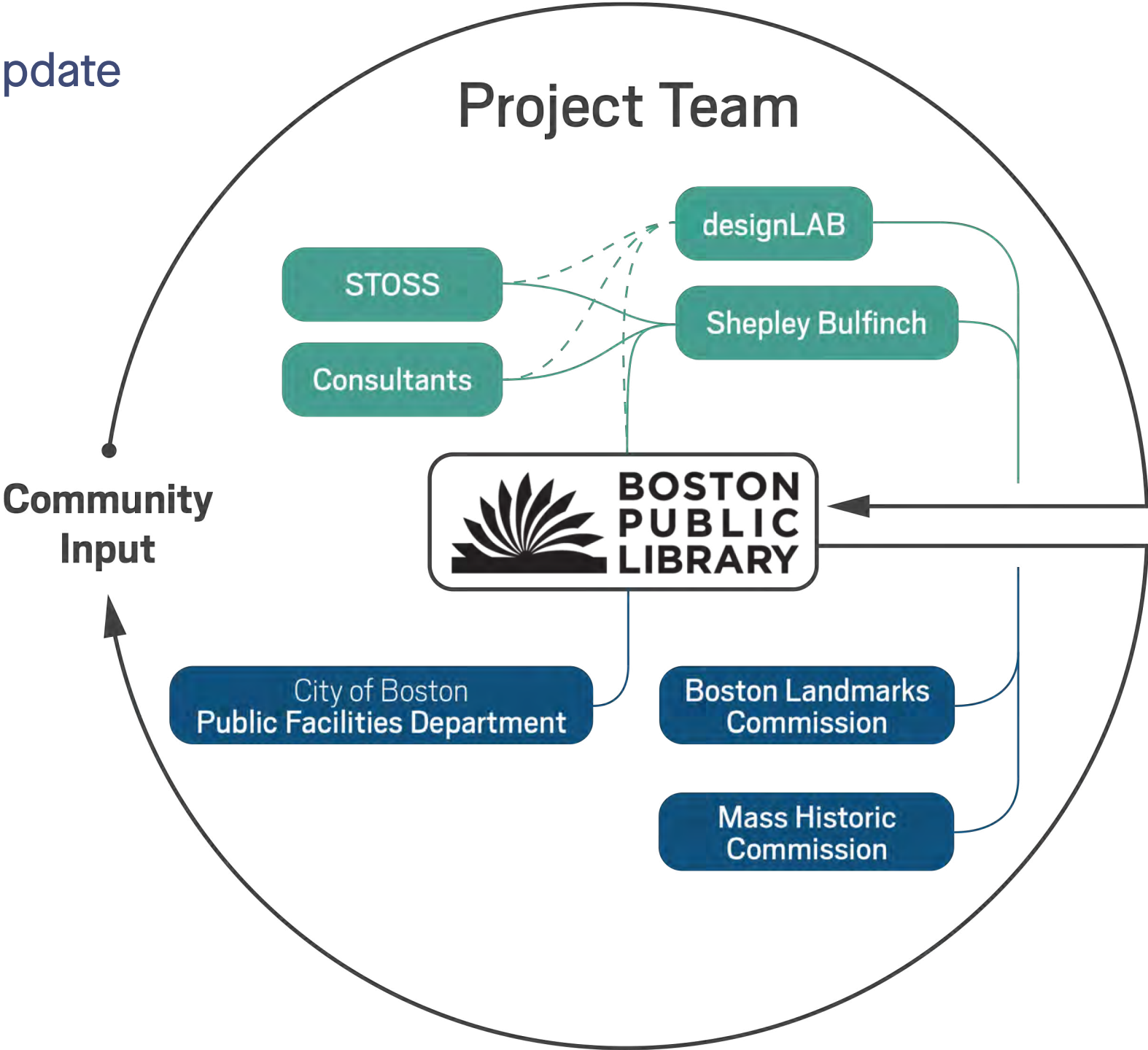
Improving Accessibility, Wayfinding, and Movement

Courtyard Changes

Breakout Session

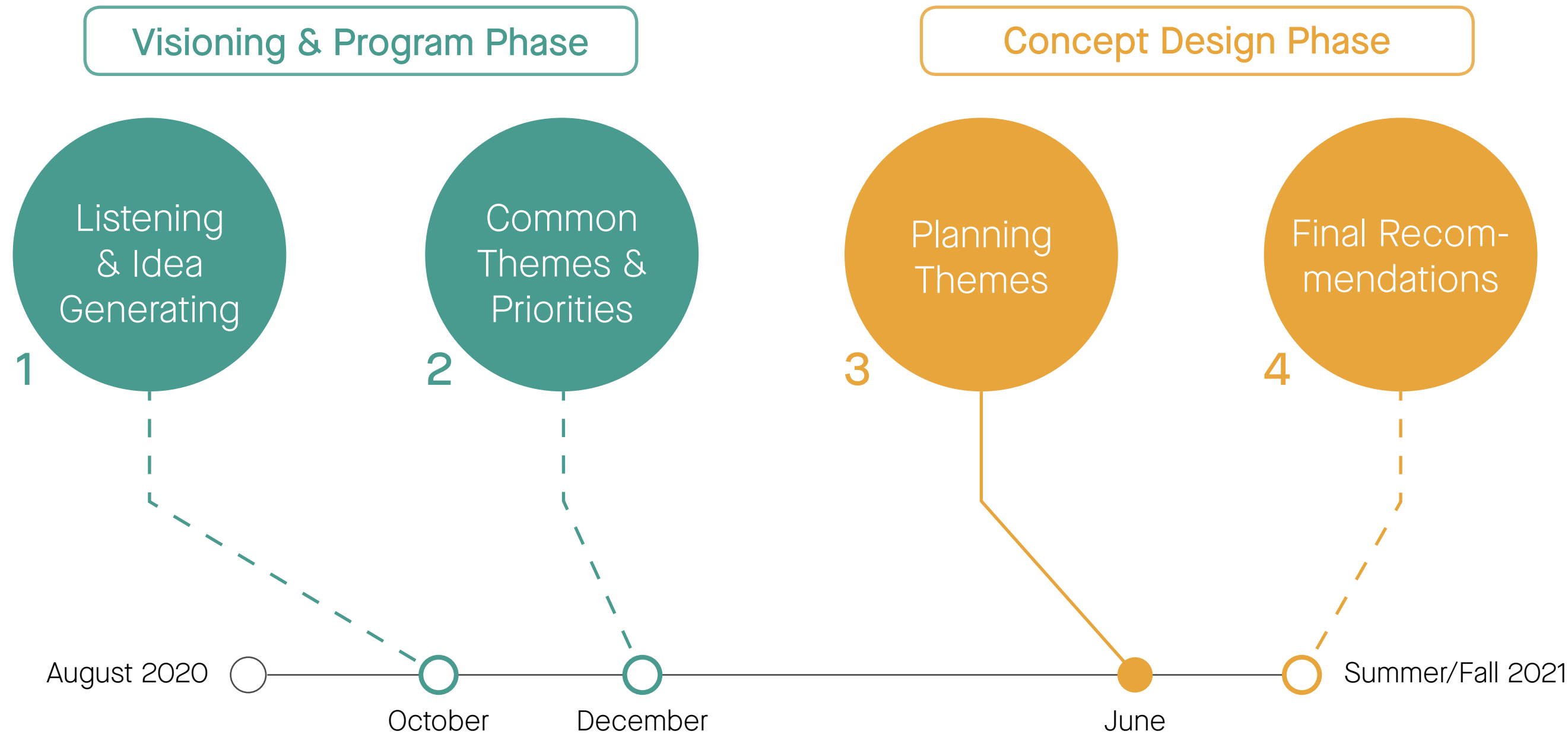
McKIM MASTER PLAN **OVERVIEW**

Project Team
McKim Master Plan Update



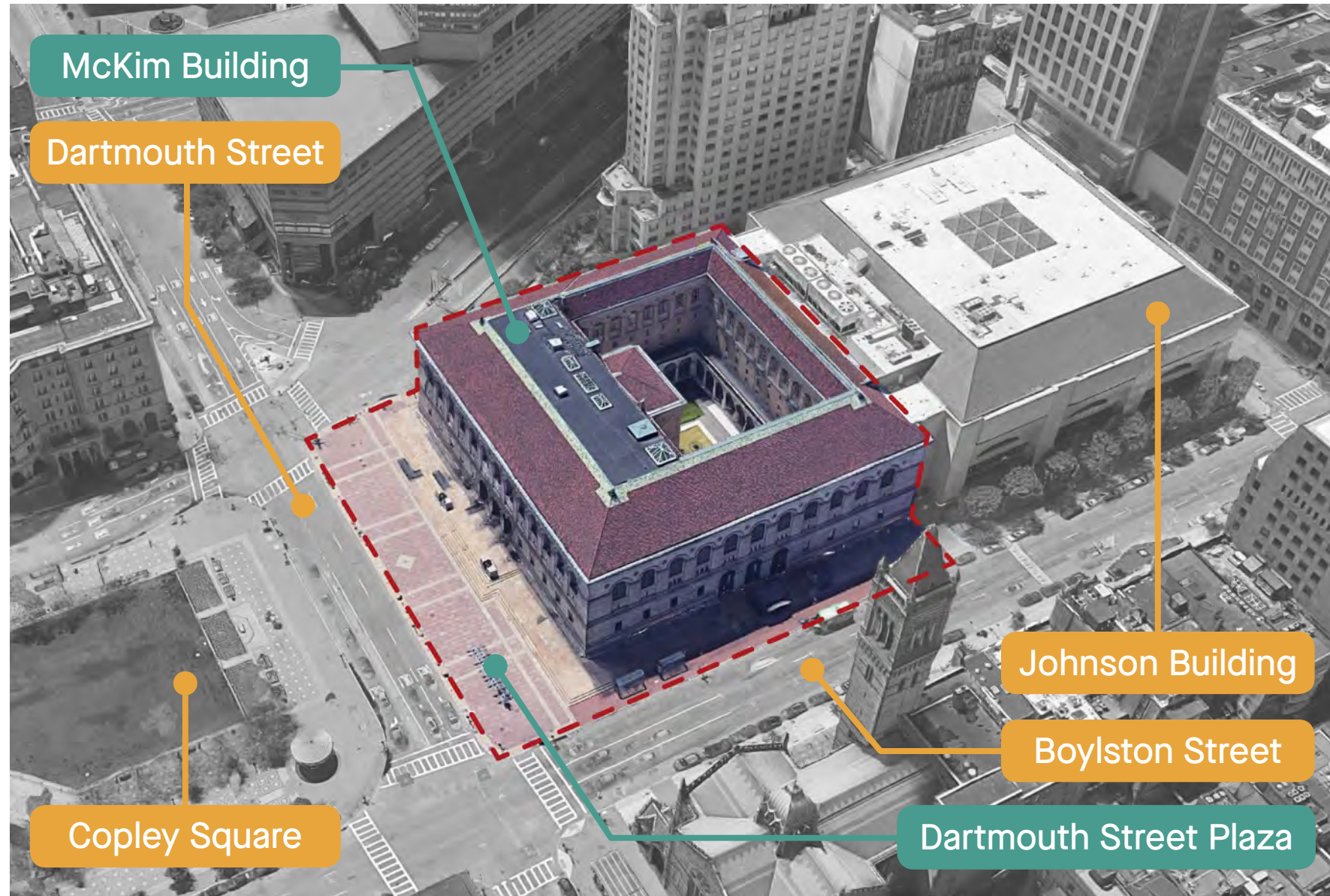
Project Schedule

Proposed Community Meeting Dates



Project Focus

McKim Building & Dartmouth Street Plaza



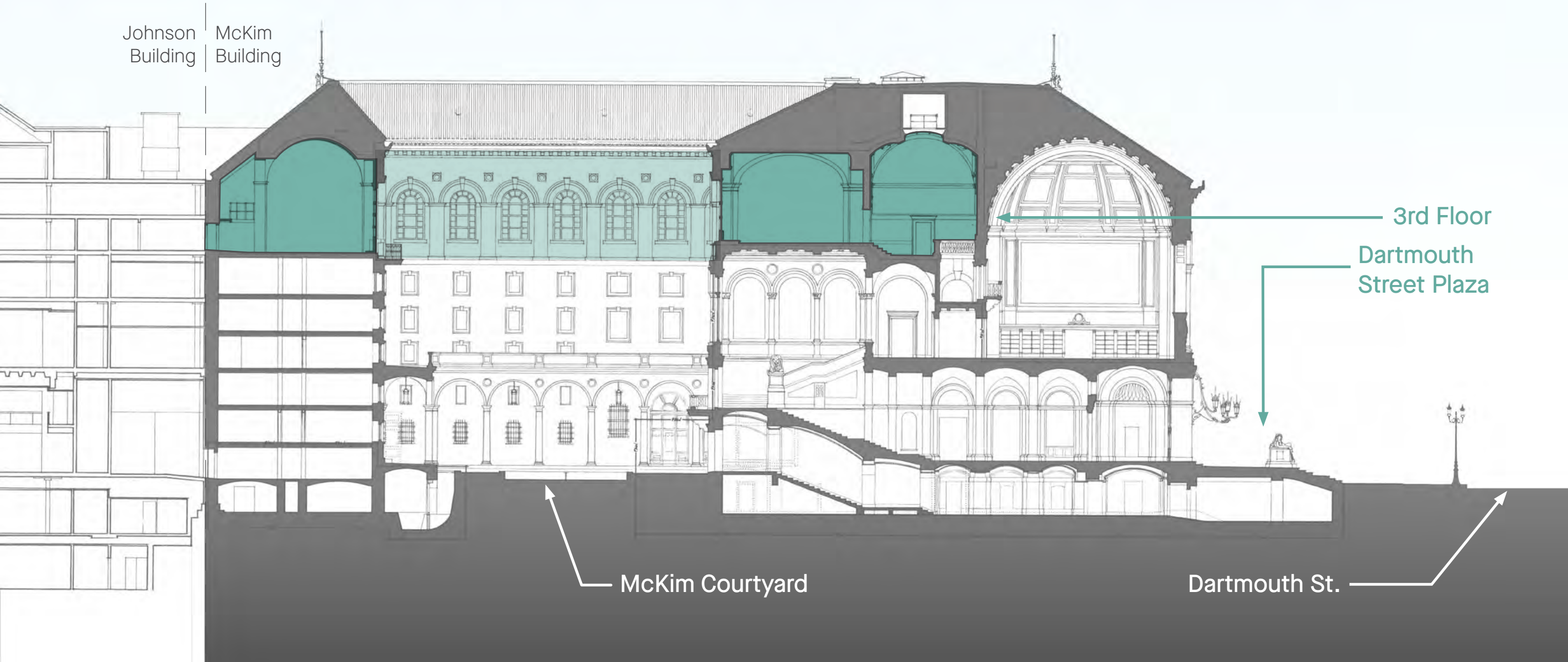
Aerial View

McKim Entrance

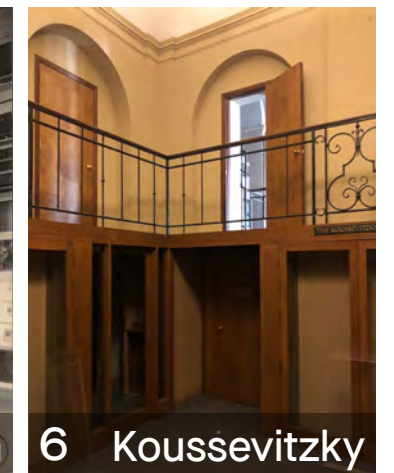
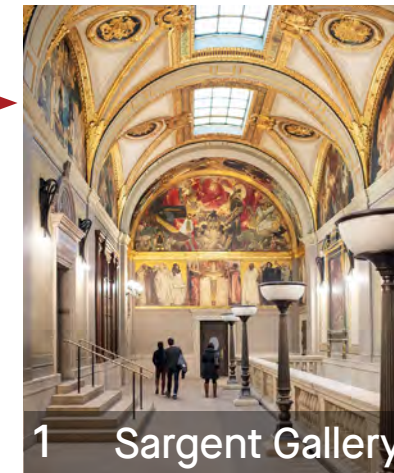
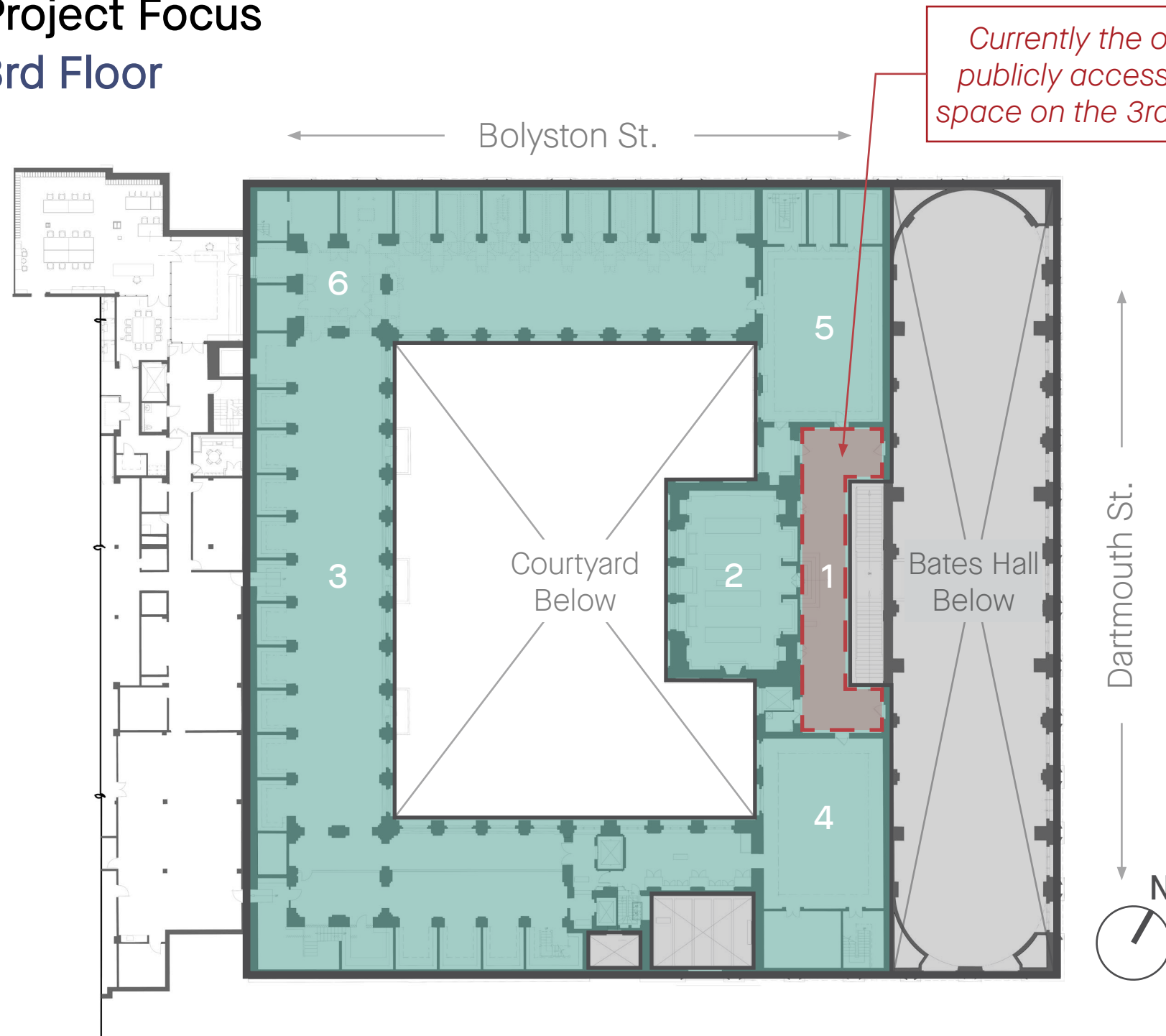


View towards Copley Square

Project Focus
McKim Building Section



Project Focus 3rd Floor

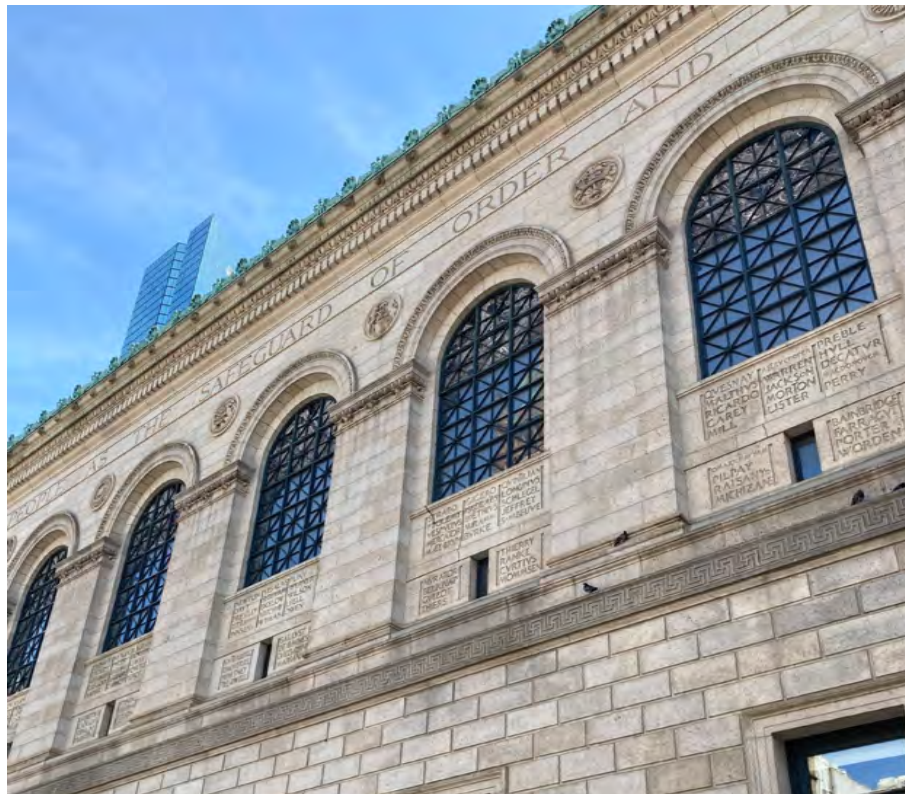


COMMUNITY MEETINGS RECAP

Project Goals

McKim Master Plan

Enhance the visitor experience of:



Building



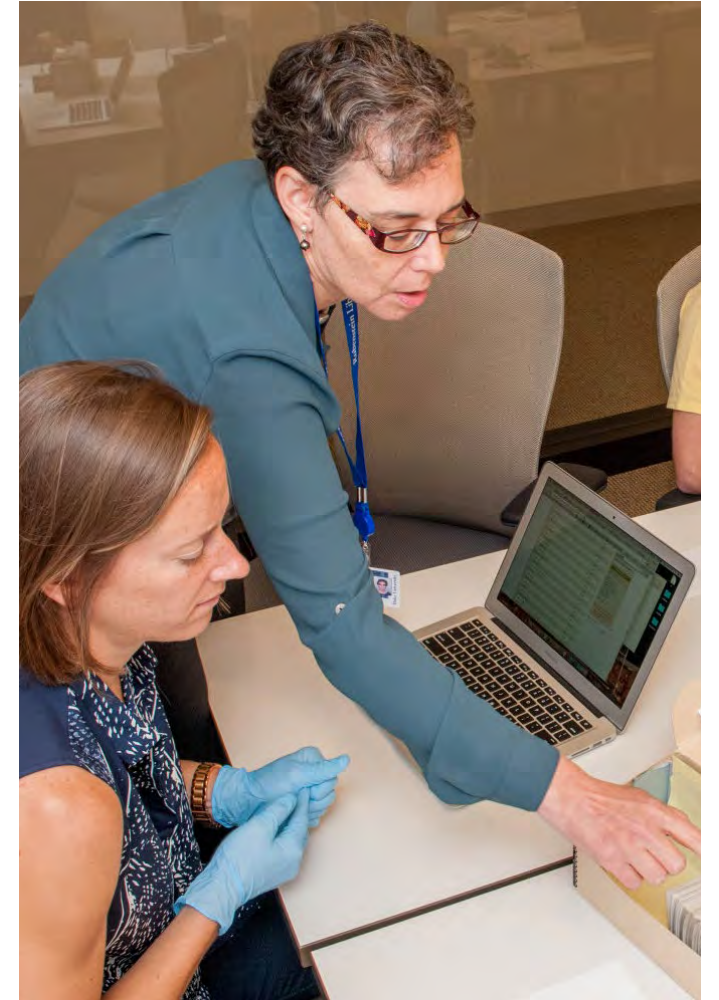
Collections



Services

Project Priorities

McKim Master Plan



Justice, Equity,
Diversity & Inclusion

Addressing
Accessibility

Improve Wayfinding

Stewardship &
Scholarship

McKIM PLANNING THEMES

Free to All

- Broadly Connected
- Home to New Contemporary Library Spaces
- Accessible and Legible

Proposed Strategies:

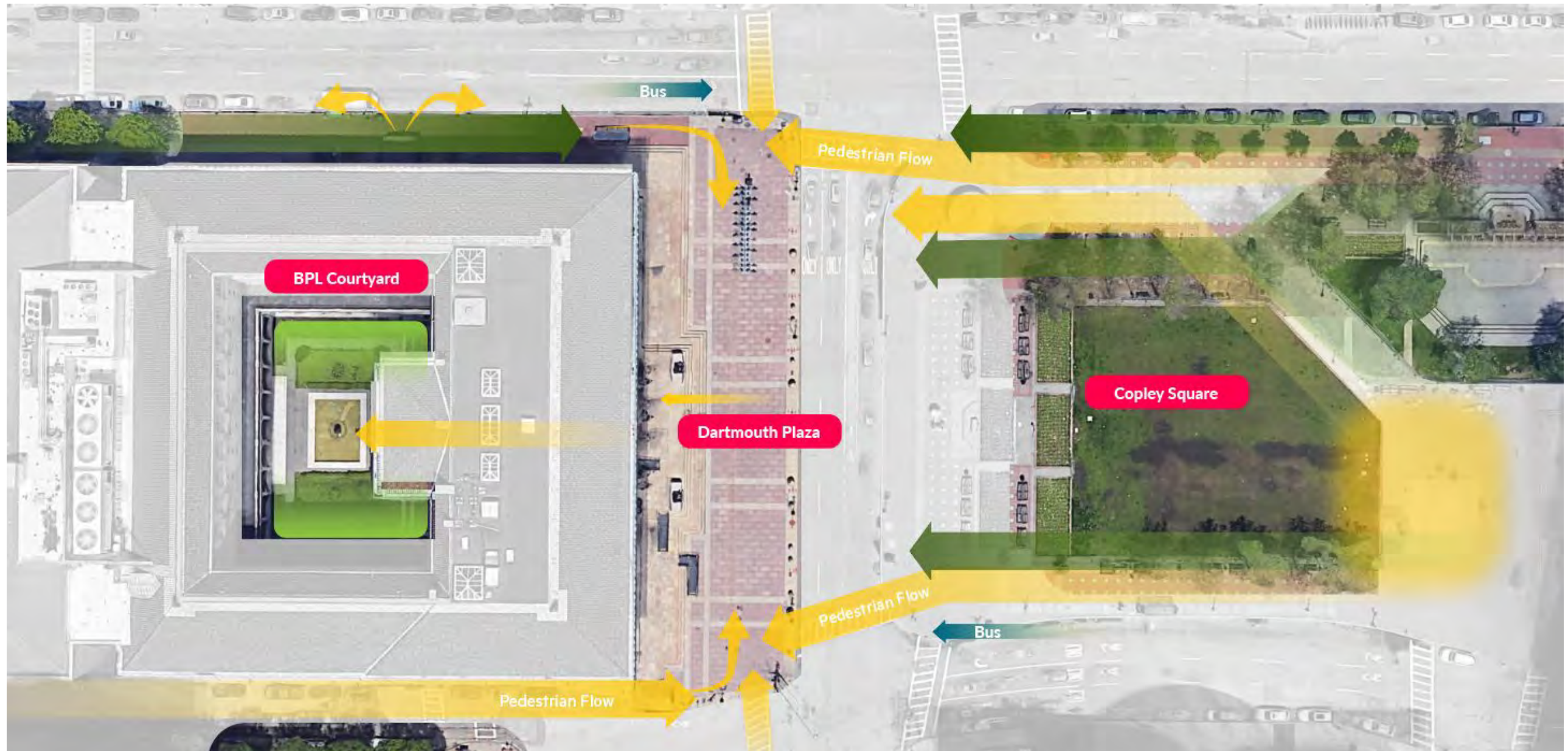
- *Connect to Dartmouth Street Plaza + Copley Square*
- *Restore and renovate to improve the public experience*
- *Improve accessibility and way-finding inside and outside*
- *Enclose Courtyard to enhance use all-year long*

BROADLY CONNECTED

*Connect to Dartmouth Street
Plaza + Copley Square*

Dartmouth Street Plaza

Renewed collection of public experiences



Dartmouth Plaza

Existing Conditions



Plinth and Sculptures



Temporary Accessible Ramps



Stairs at Entry



Seat Wall

Boylston Street

Existing Conditions - Dartmouth Corner



Dartmouth/Boylston corner



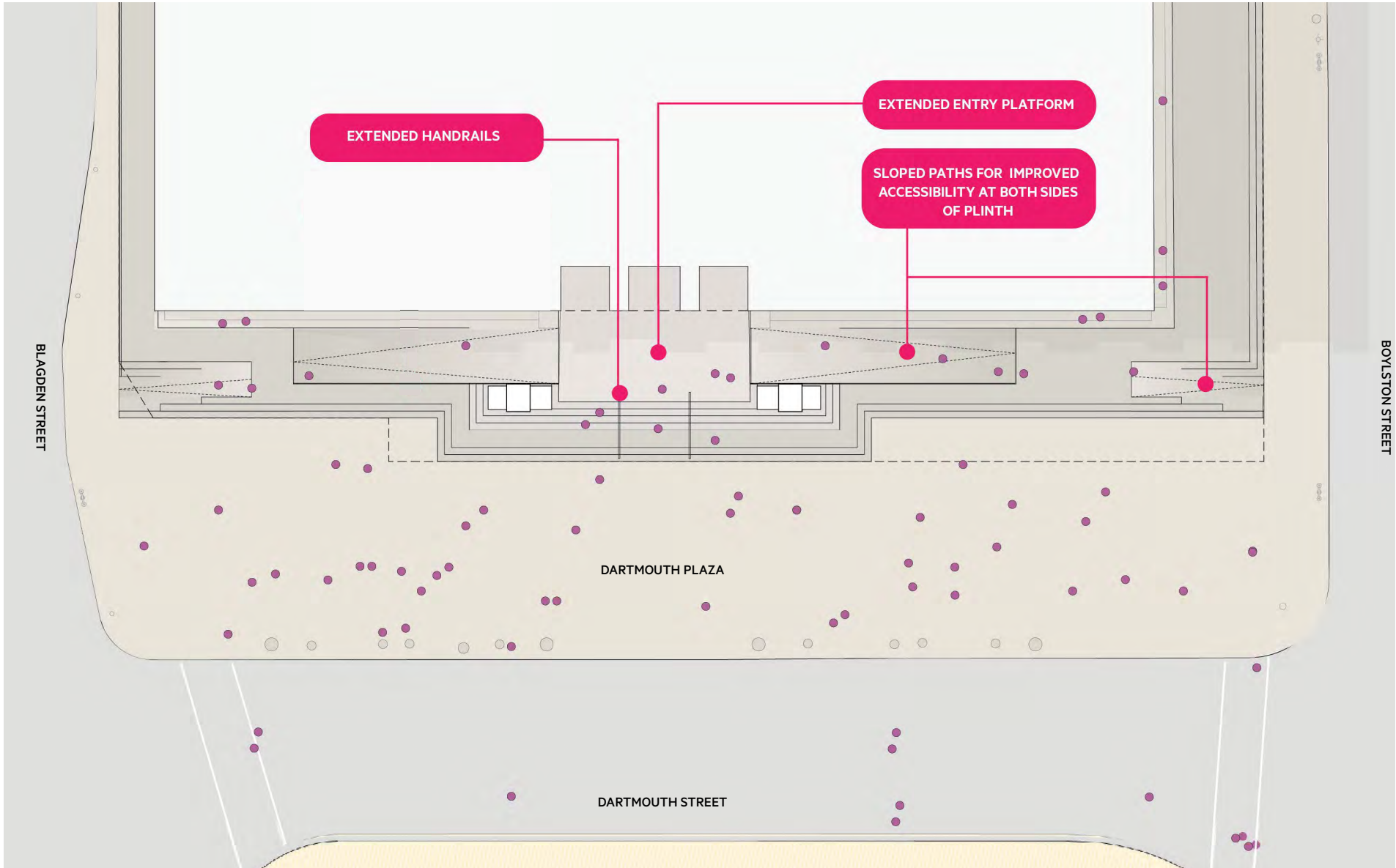
Bus shelter and stop



T stop entrance and elevator

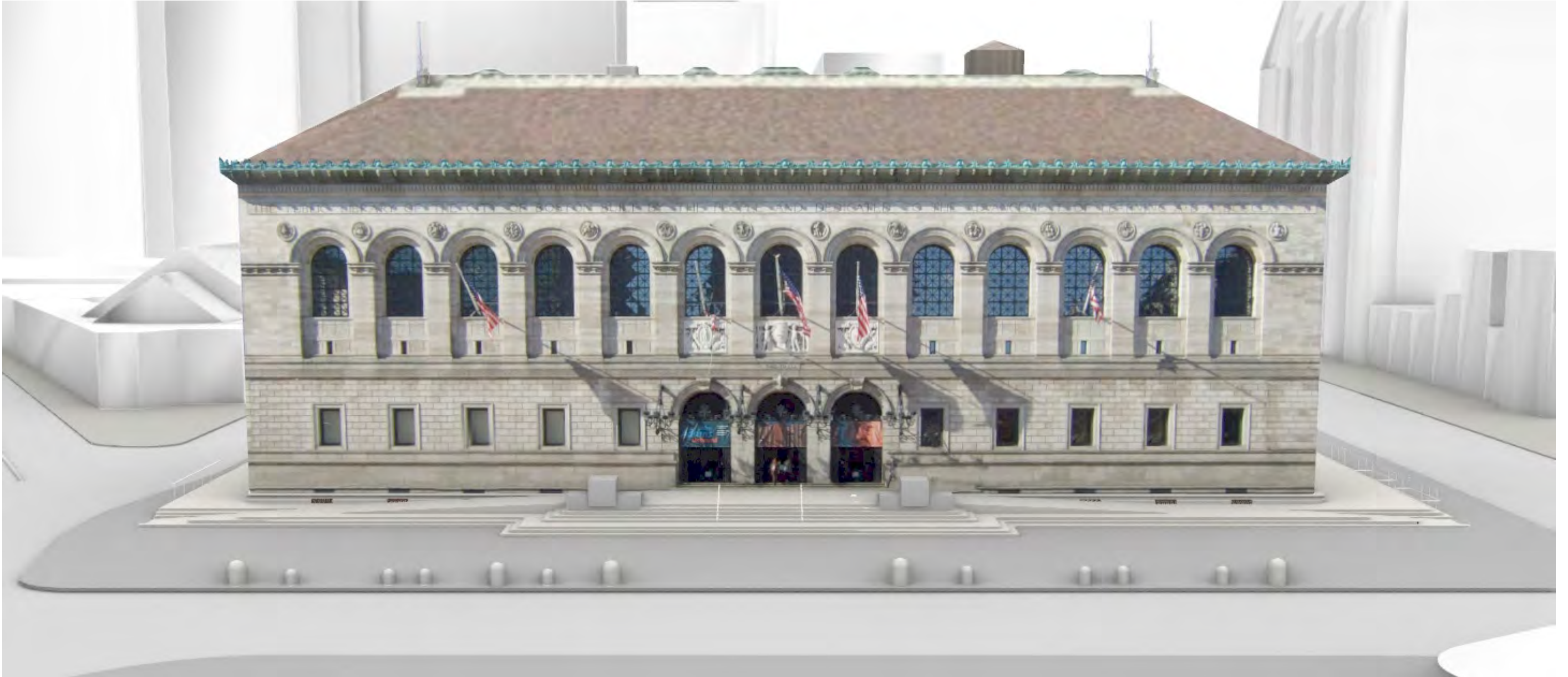
Dartmouth Plaza

Proposed Sloped Paths at Entry - Plan



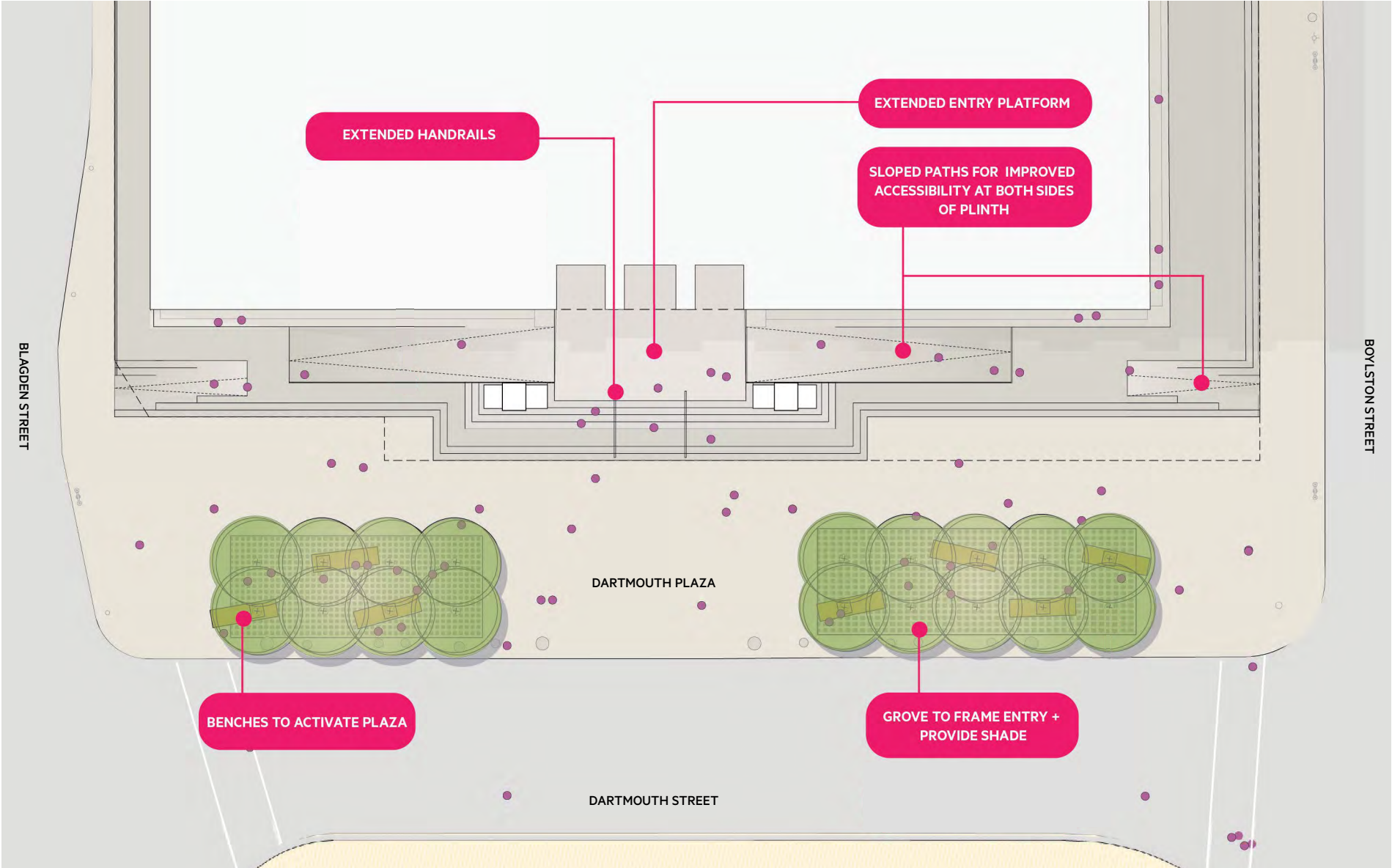
Dartmouth Plaza

Proposed Sloped Paths at Entry



Dartmouth Plaza

Draft Site Plan



Dartmouth Plaza

Proposed Sloped Paths at Entry with Planting



Dartmouth Plaza

Experiences and Activities

Farmer's Market Expansion



Image via Boston Parks Dept

Music + Performances



Image via BPL

Bringing Services Outdoors



The Uni Project, Image via Street Lab

Outdoor Reading Room



Image via BPL

Seating



Harvard Plaza, Stoss

Dartmouth Street Plaza

Connections to Copley Square/Multiple Sight-lines

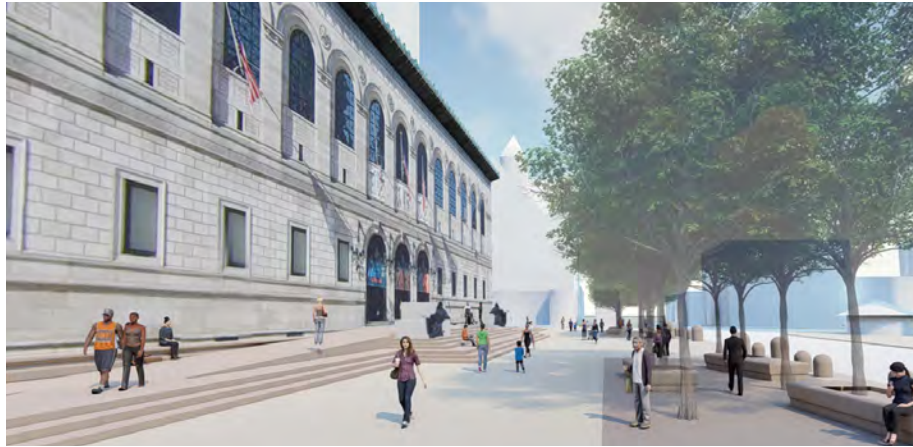


Image used with permission from BPRD and Sasaki

Dartmouth Plaza



View from Copley



View from corner of Dartmouth and Blagden



View crossing Boylston

HOME TO CONTEMPORARY LIBRARY SPACES

*Restore and renovate to
improve the public experience*

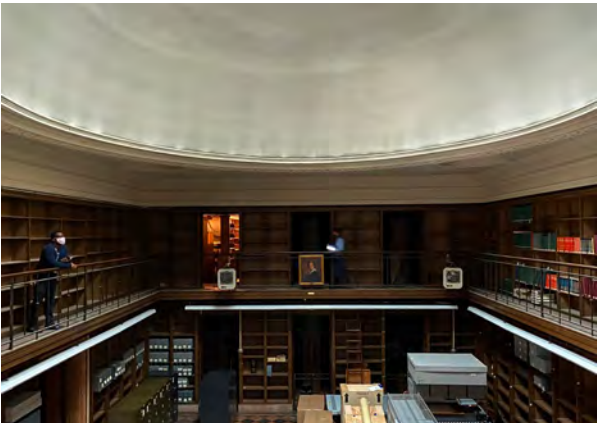
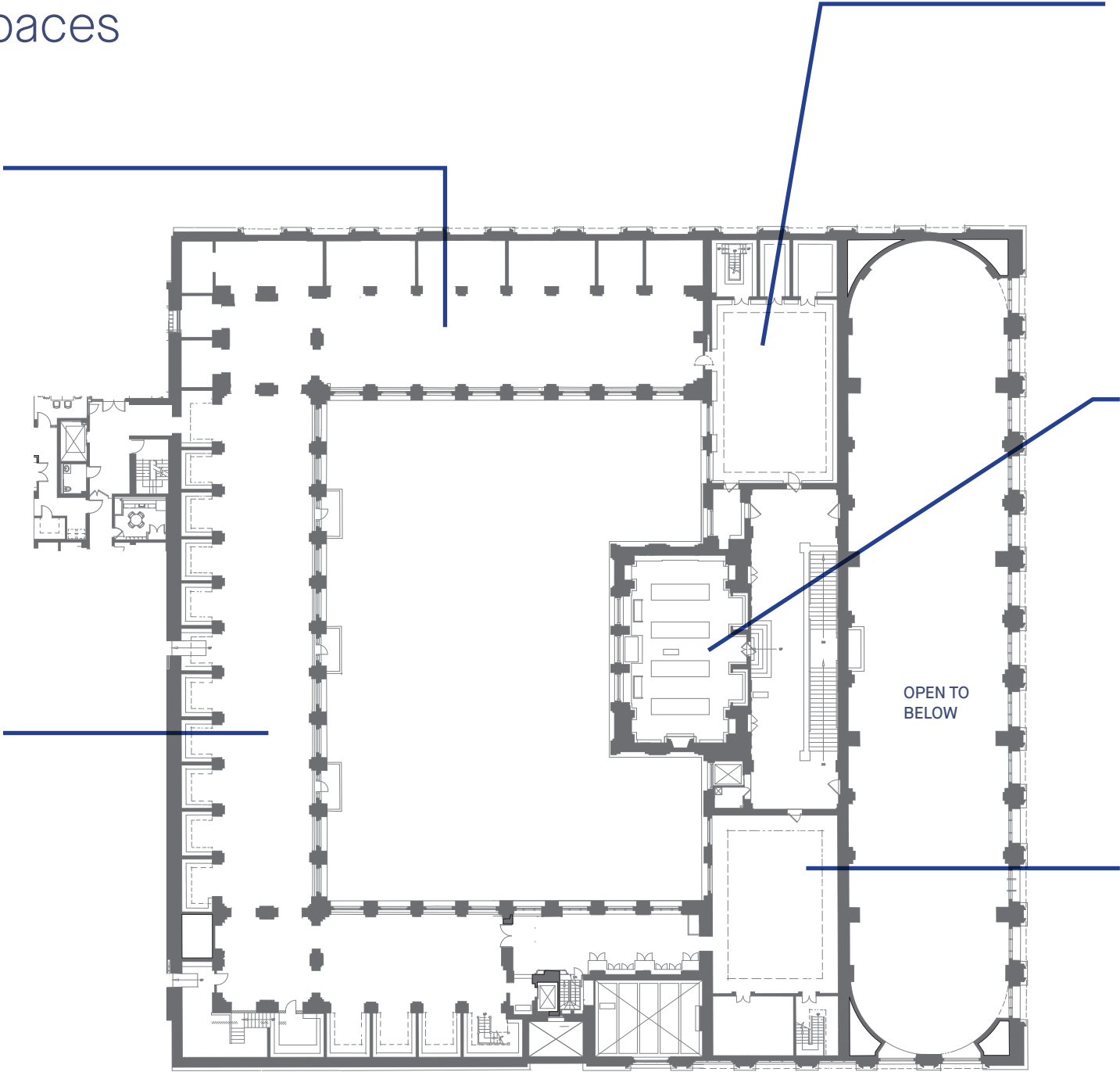
Third Floor // Current Spaces



JORDAN ROOM



FINE ARTS / MUSIC ROOM



CUSHMAN ROOM

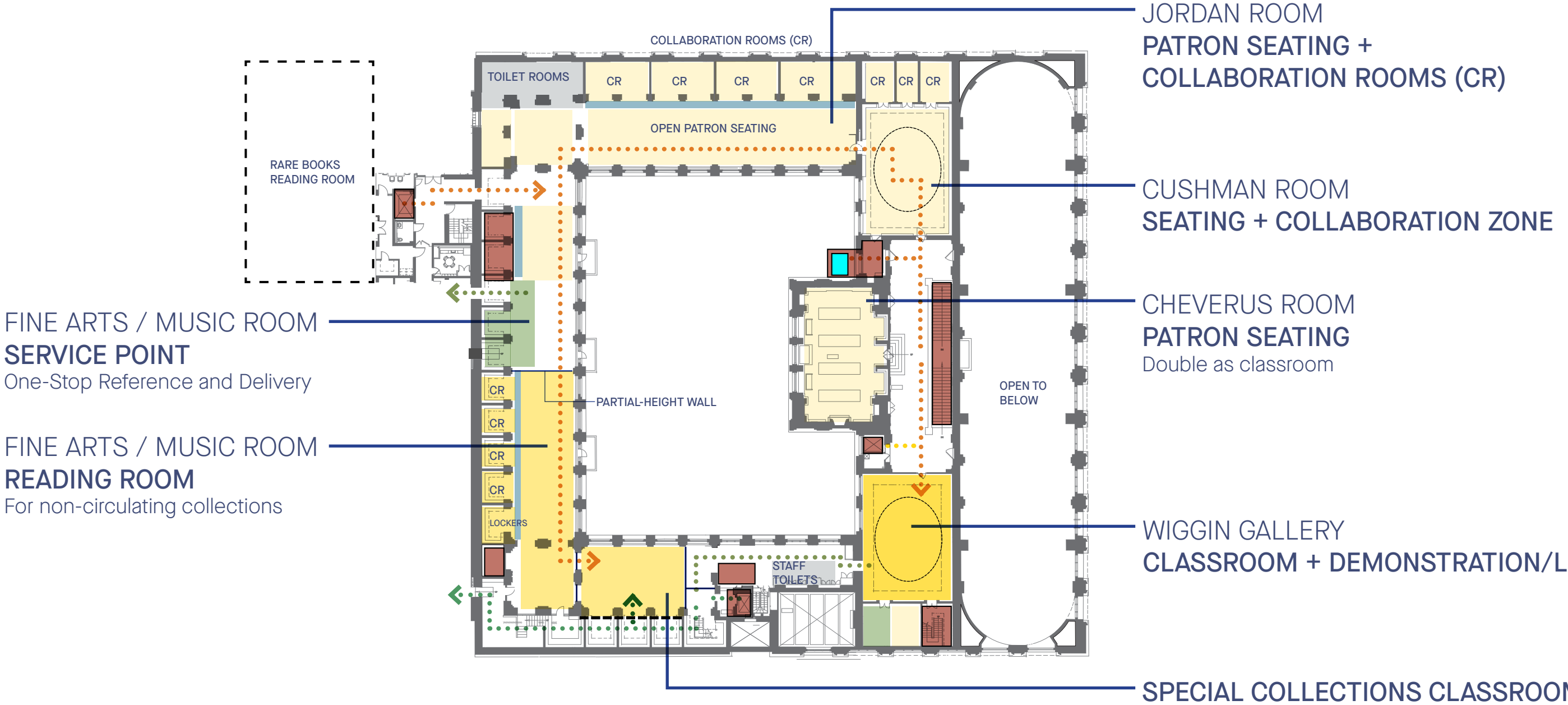


CHEVERUS ROOM



WIGIN GALLERY

Third Floor // Proposed Uses



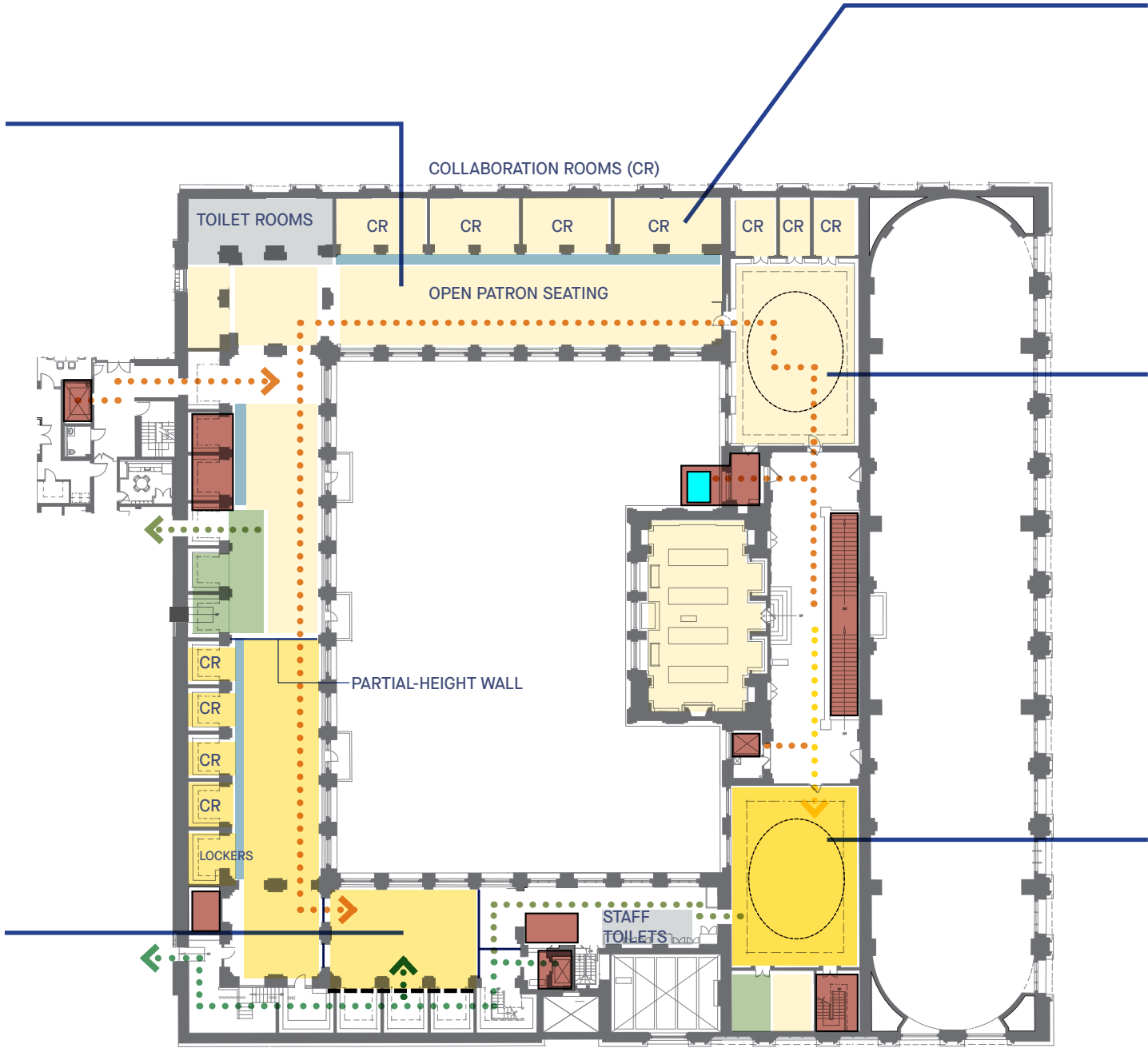
Third Floor // Proposed Uses



PATRON SEATING



SPECIAL COLLECTIONS
CLASSROOM



COLLABORATION ROOMS



SEATING +
COLLABORATION ZONE

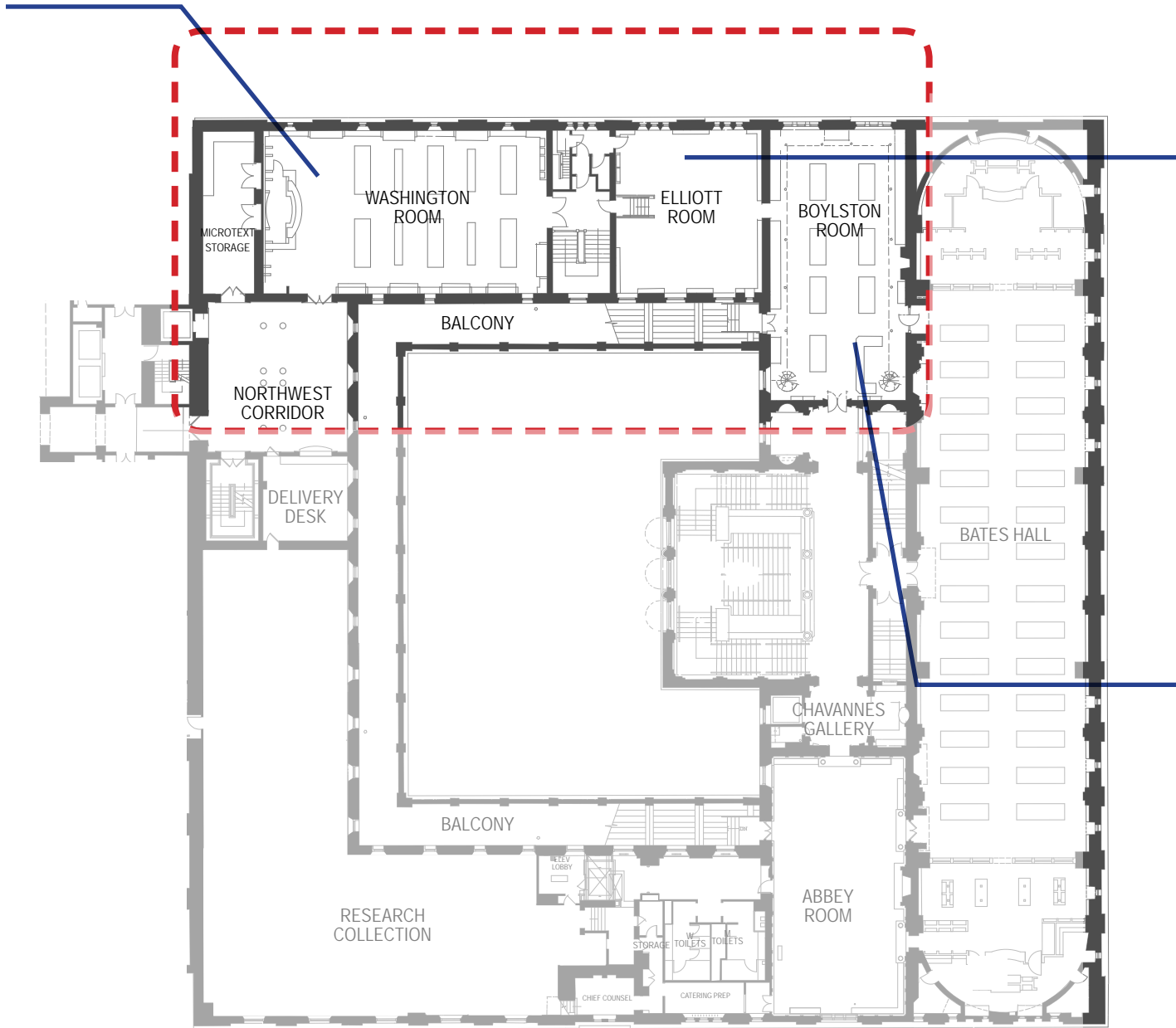


CLASSROOM +
DEMONSTRATION/LAB

Second Floor // Current Spaces



WASHINGTON ROOM



ELLIOTT ROOM



BOYLSTON ROOM

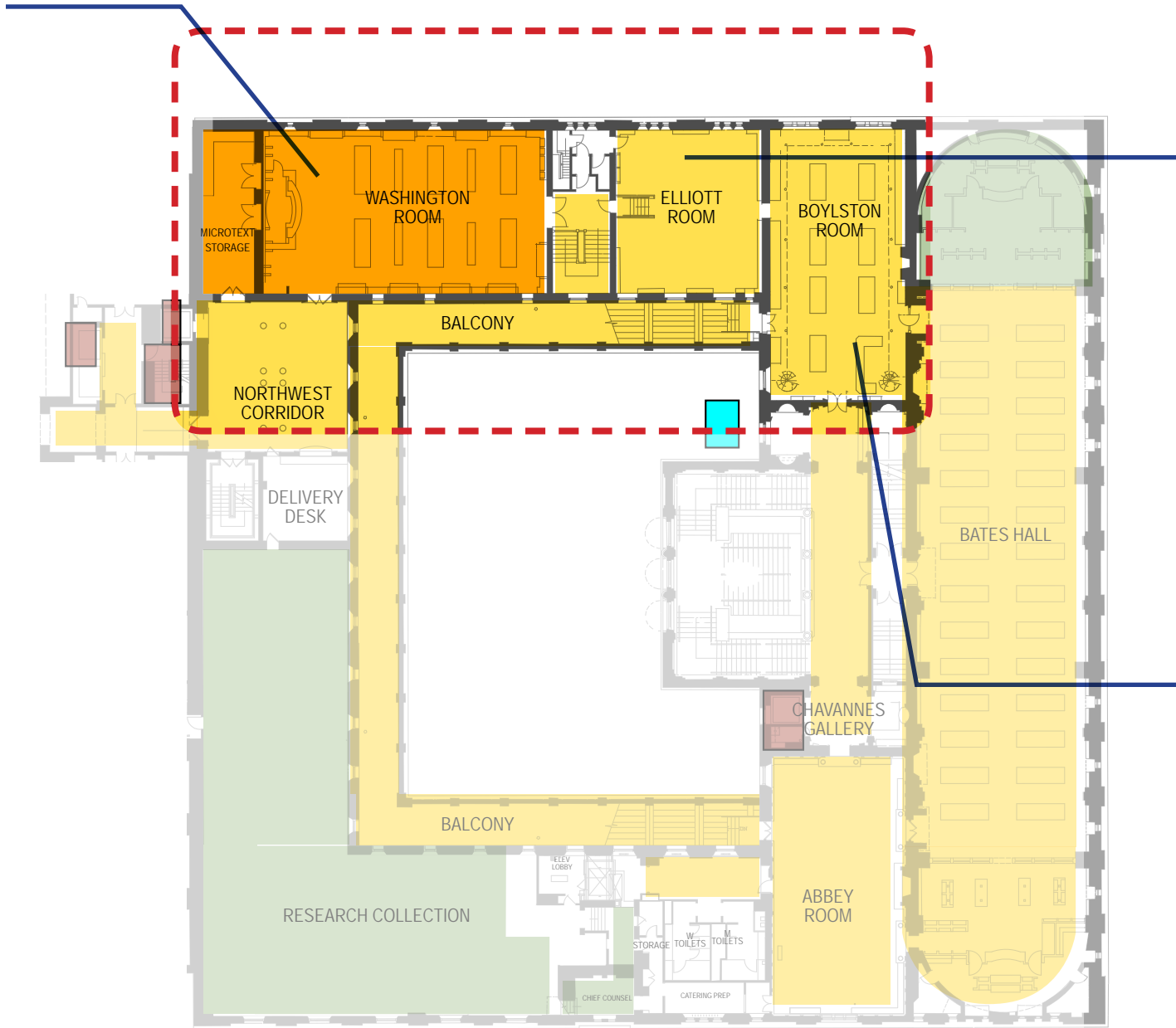
Second Floor // Proposed Uses



Second Floor // Proposed Uses



WASHINGTON ROOM
MULTI-USE



ELLIOTT ROOM
CLASSROOM

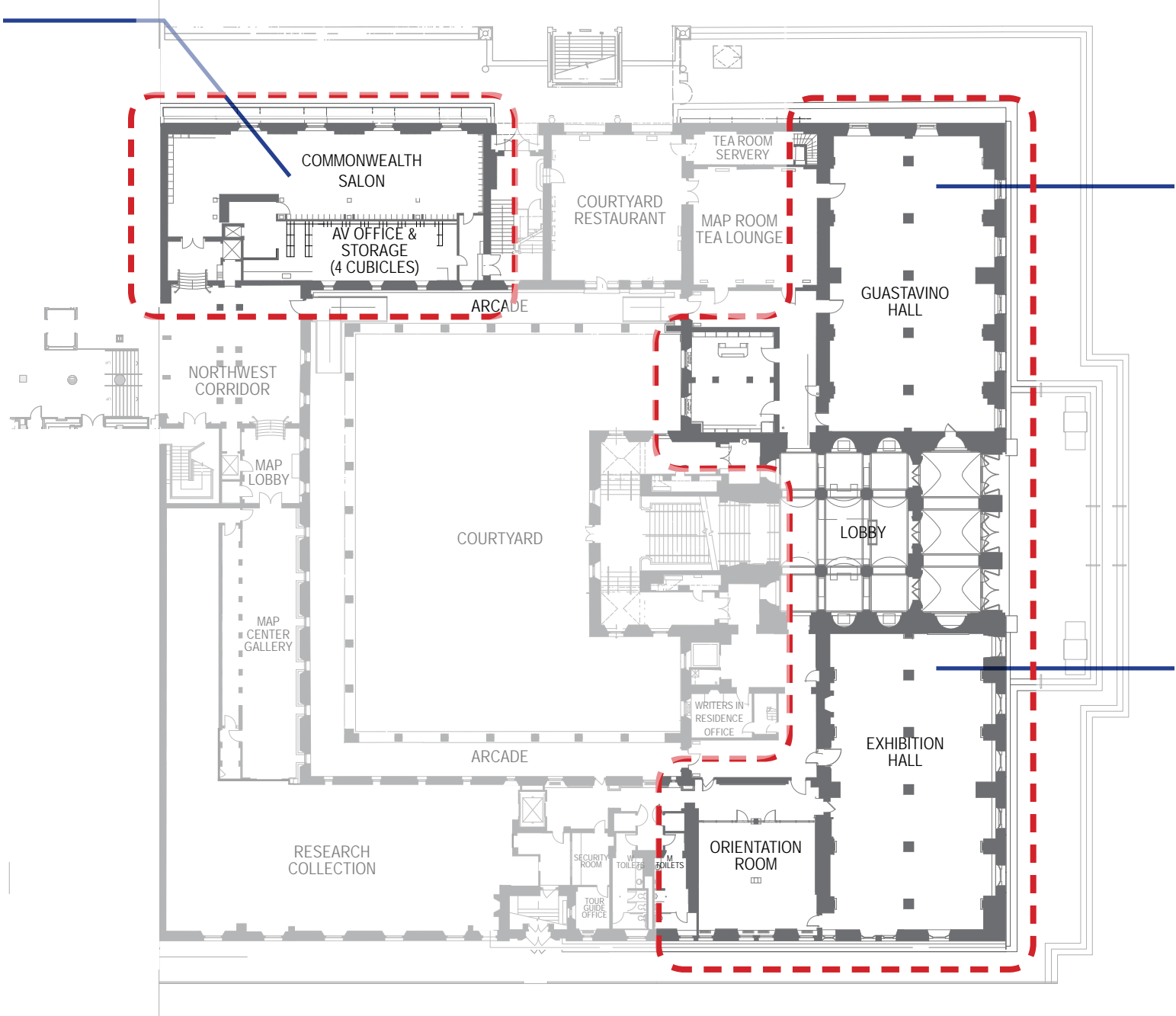


BOYLSTON ROOM
PATRON SEATING

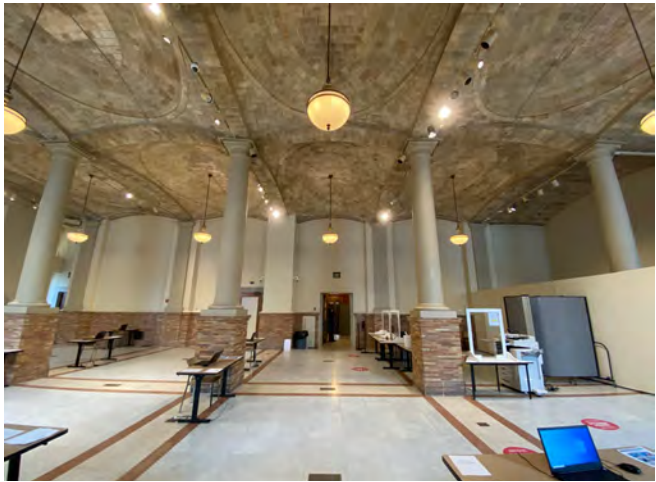
First Floor // Current Spaces



COMMONWEALTH SALON



GUASTAVINO ROOM



EXHIBITION HALL

First Floor // Proposed Uses



First Floor // Proposed Uses



COMMONWEALTH SALON
MULTI-USE



GUASTAVINO HALL

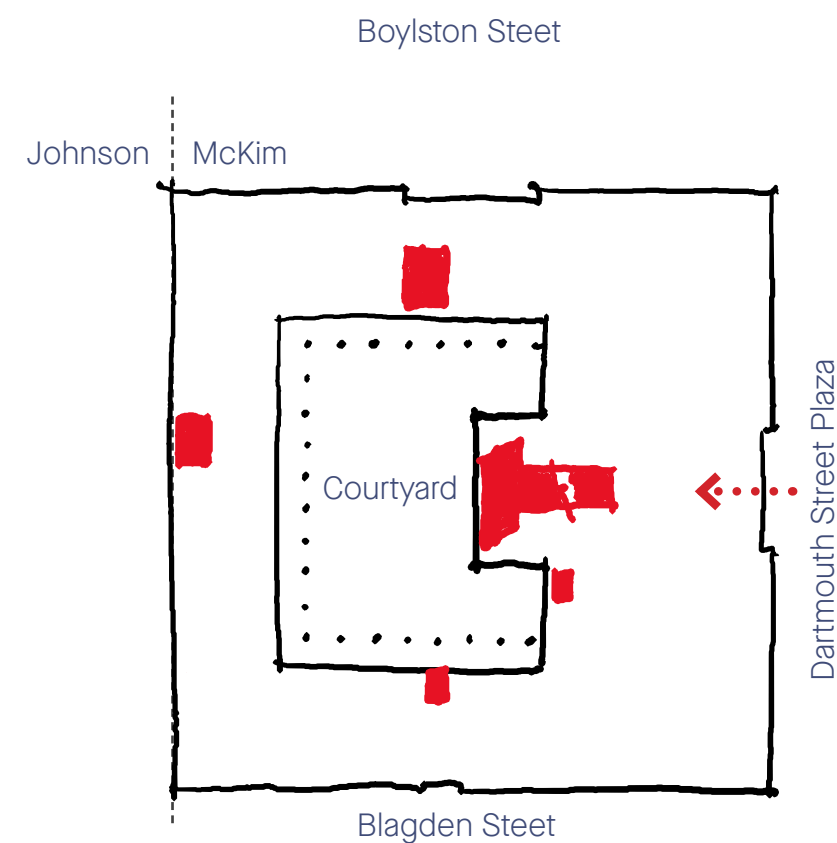


EXHIBITION HALL

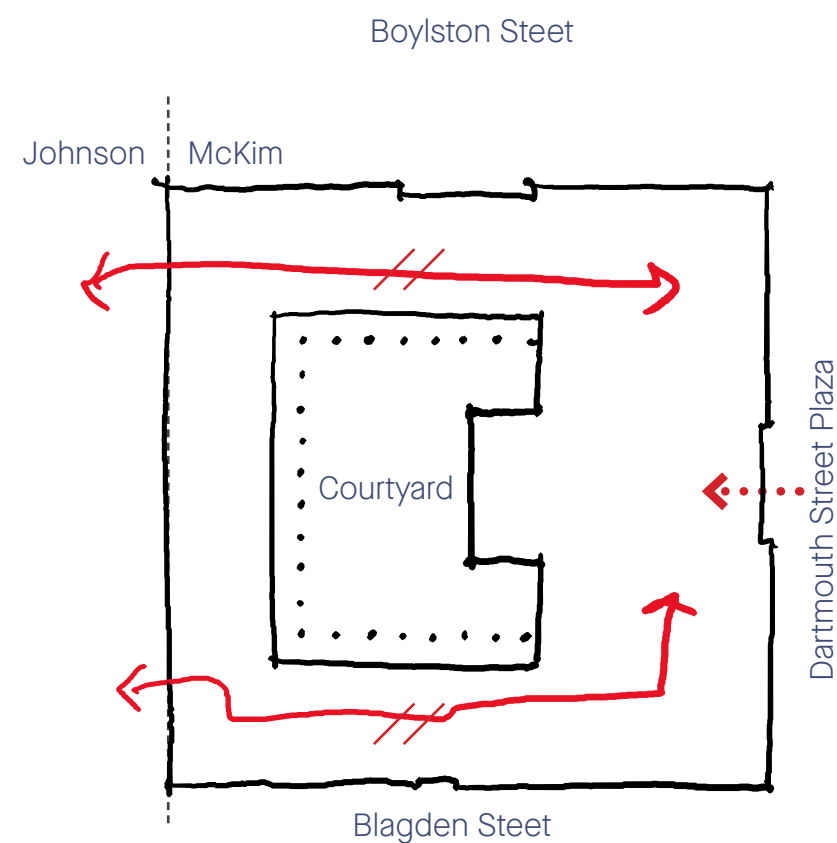
ACCESSIBLE AND LEGIBLE

*Improve accessibility and
way-finding inside and
outside*

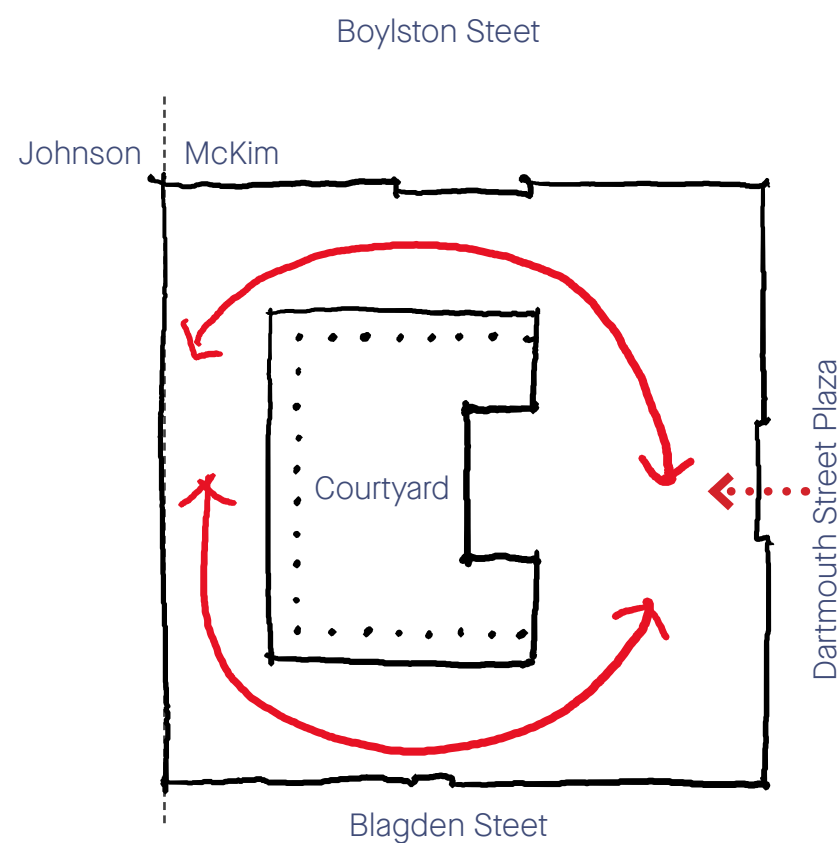
Existing Barriers to Movement in McKim



Vertical Movement
Discontinuous
Lack of Clear Pathways



Horizontal Pathways
Floor level differences

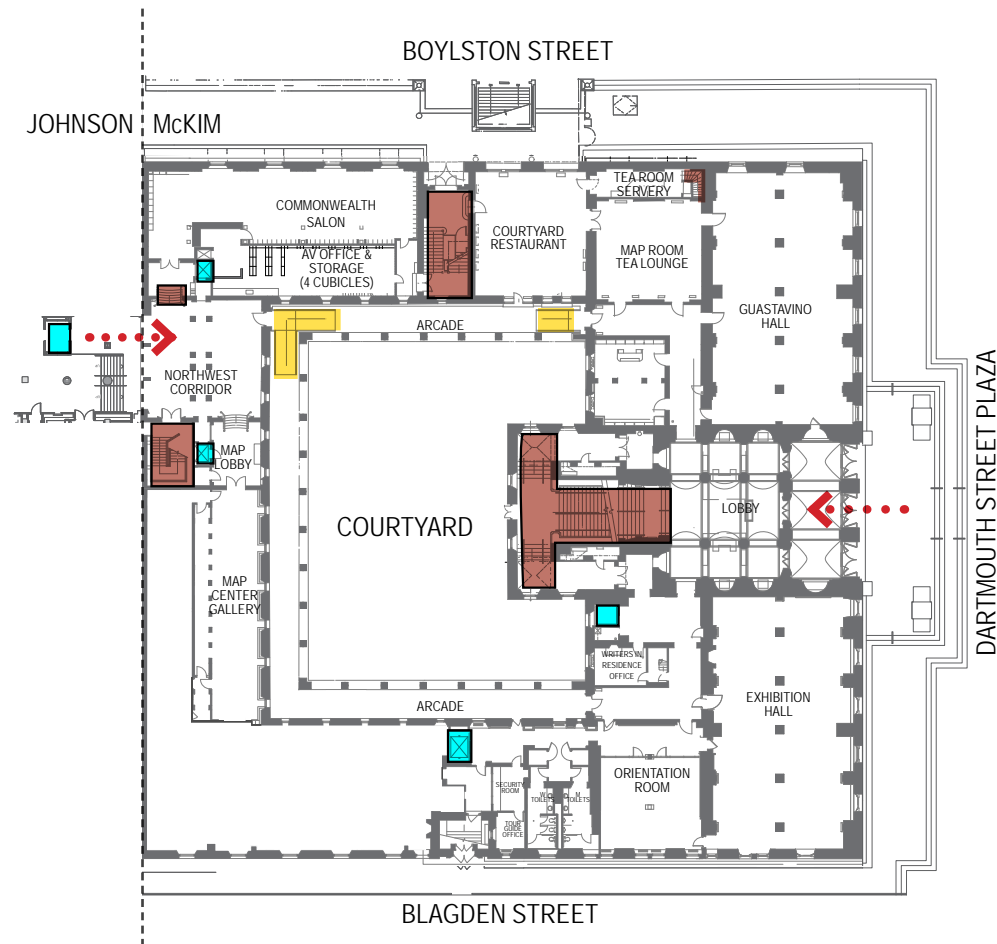


Courtyard Plan
Interconnected rooms
Pinchpoints at corners

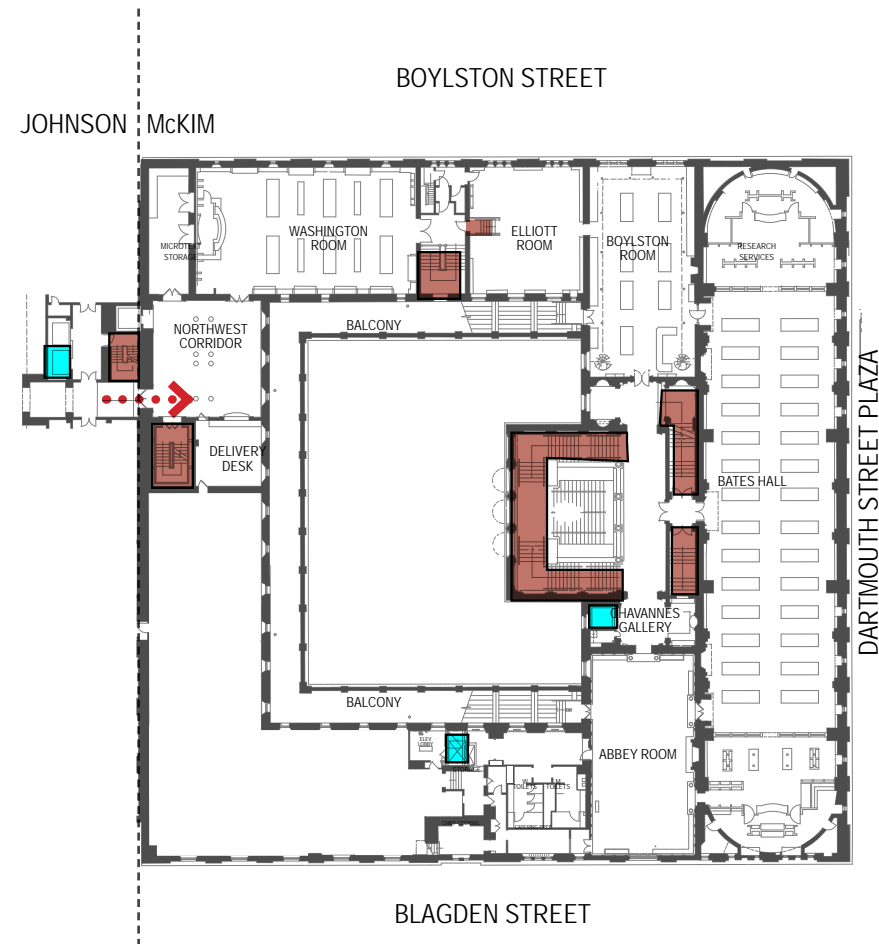
Vertical Movement // Existing Elevator, Stairs, and Ramps



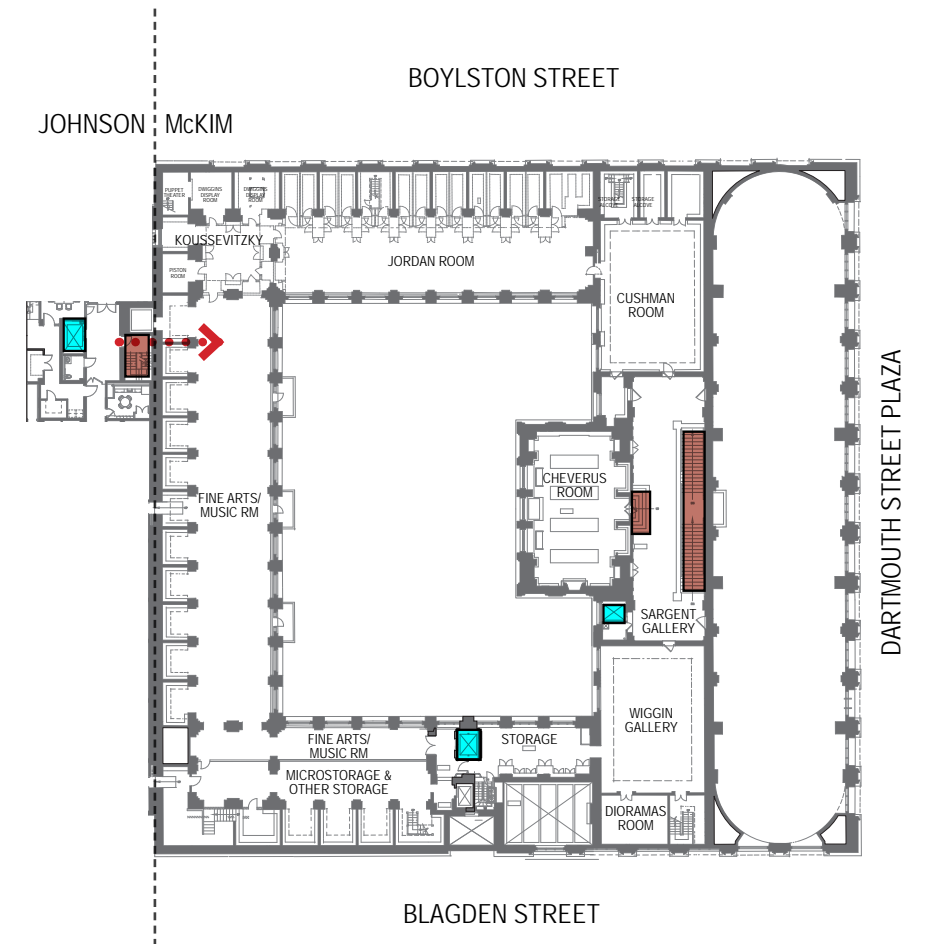
Elevators



Level 1



Level 2



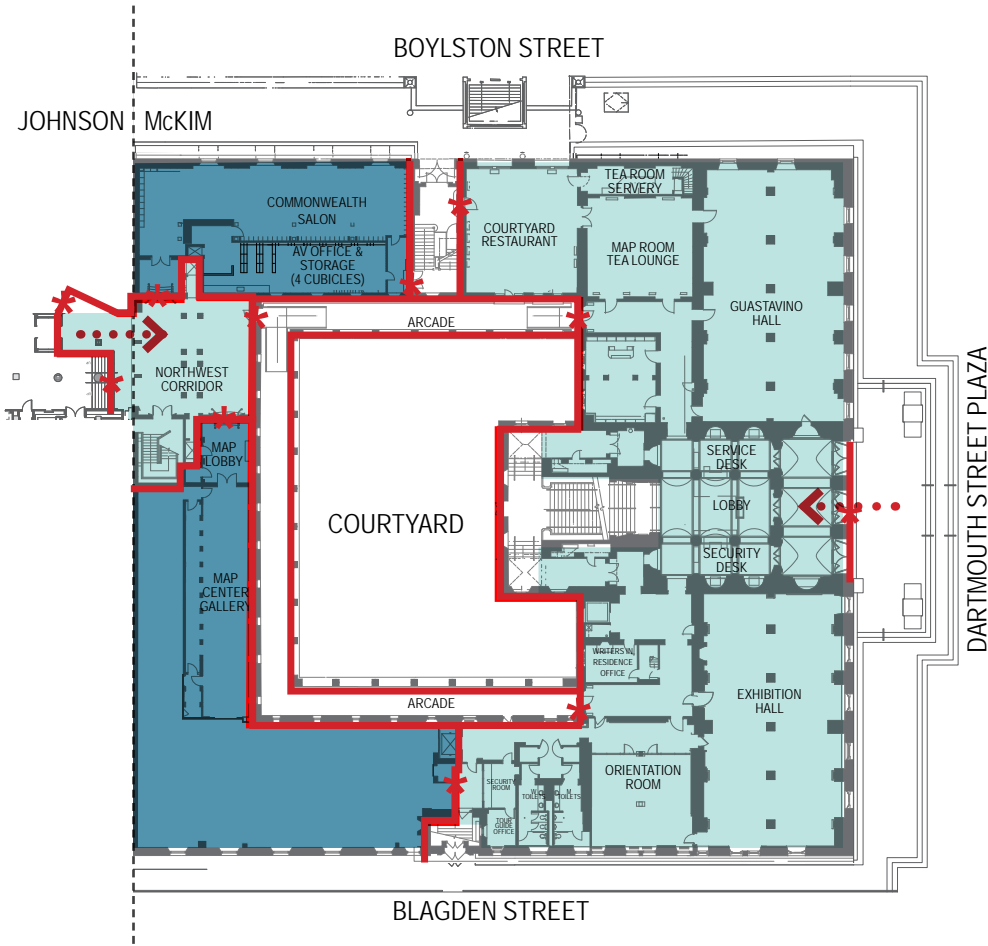
Level 3

Horizontal Pathways // Existing Barriers to Movement

Changes in floor level

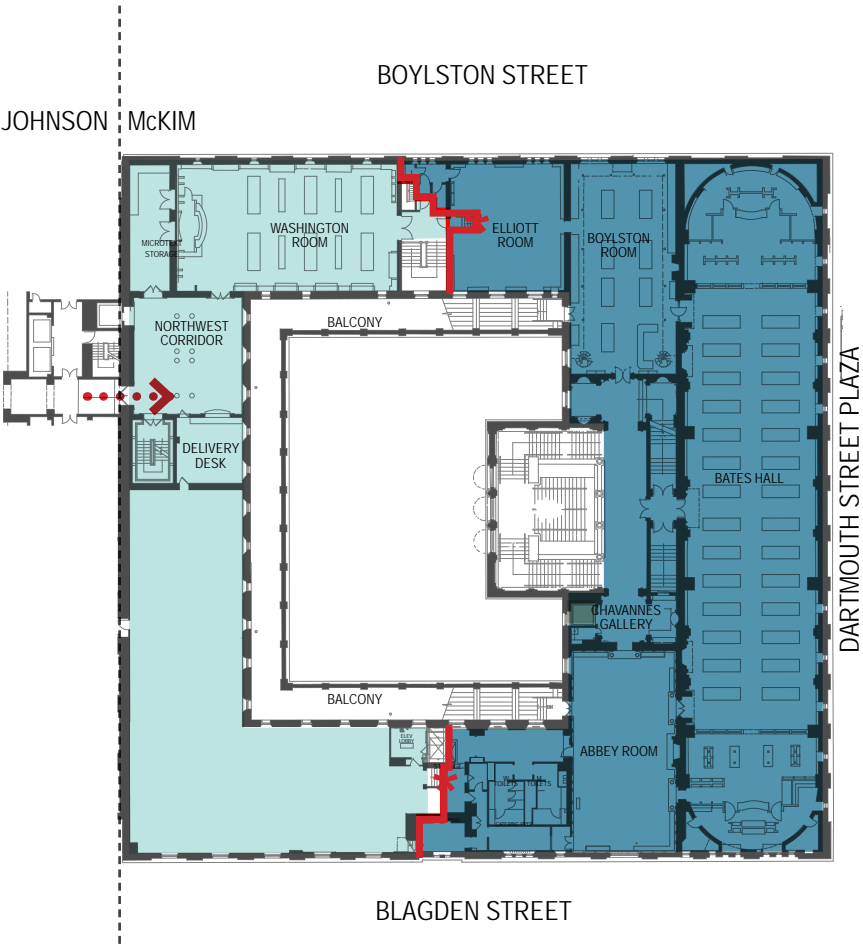
Higher floor level

Lower floor level



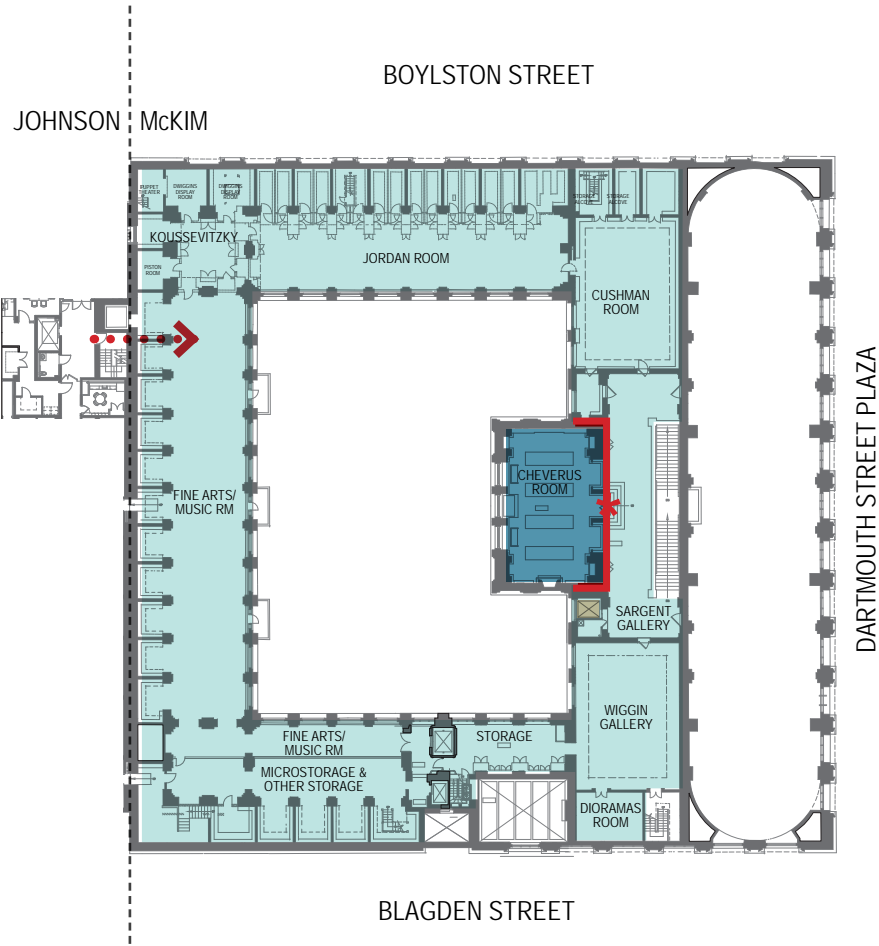
Level 1

- Multiple changes in floor level
- Reduce number of level changes
 - Improve equitable access



Level 2

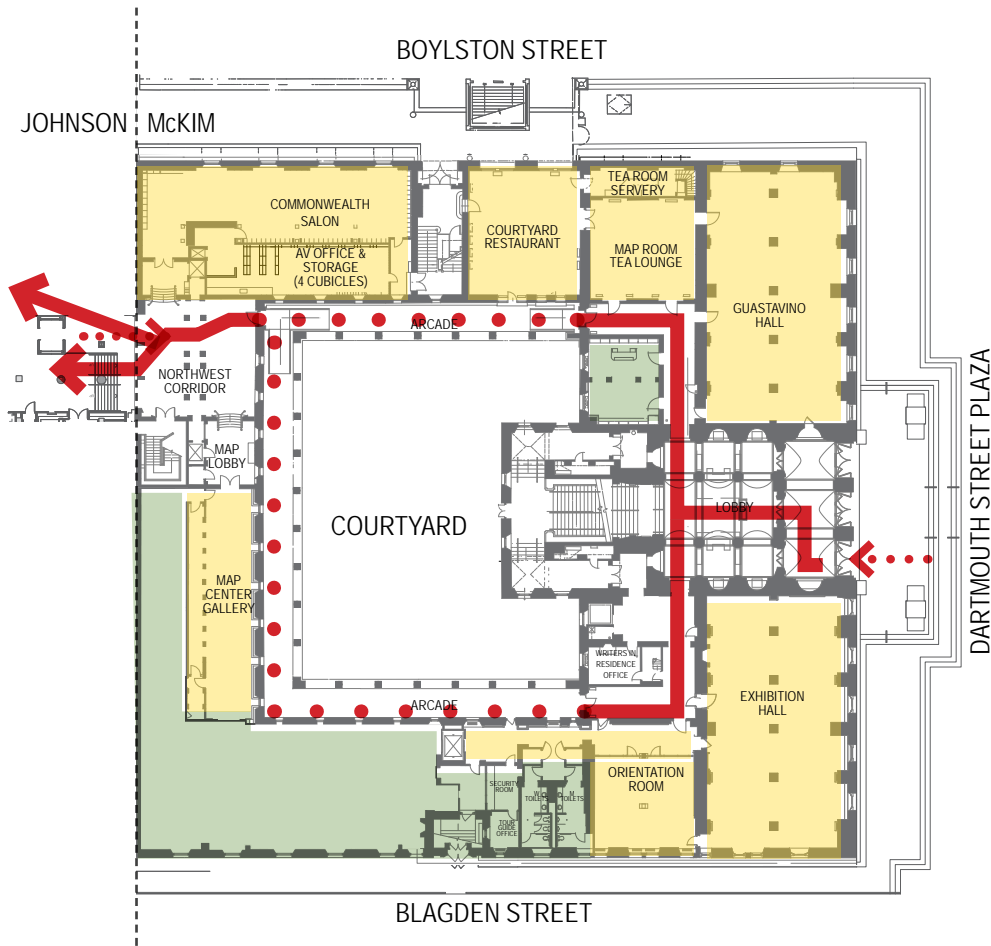
- Changes in floor level between Dartmouth and Johnson sides.
- Improve equitable access



Level 3

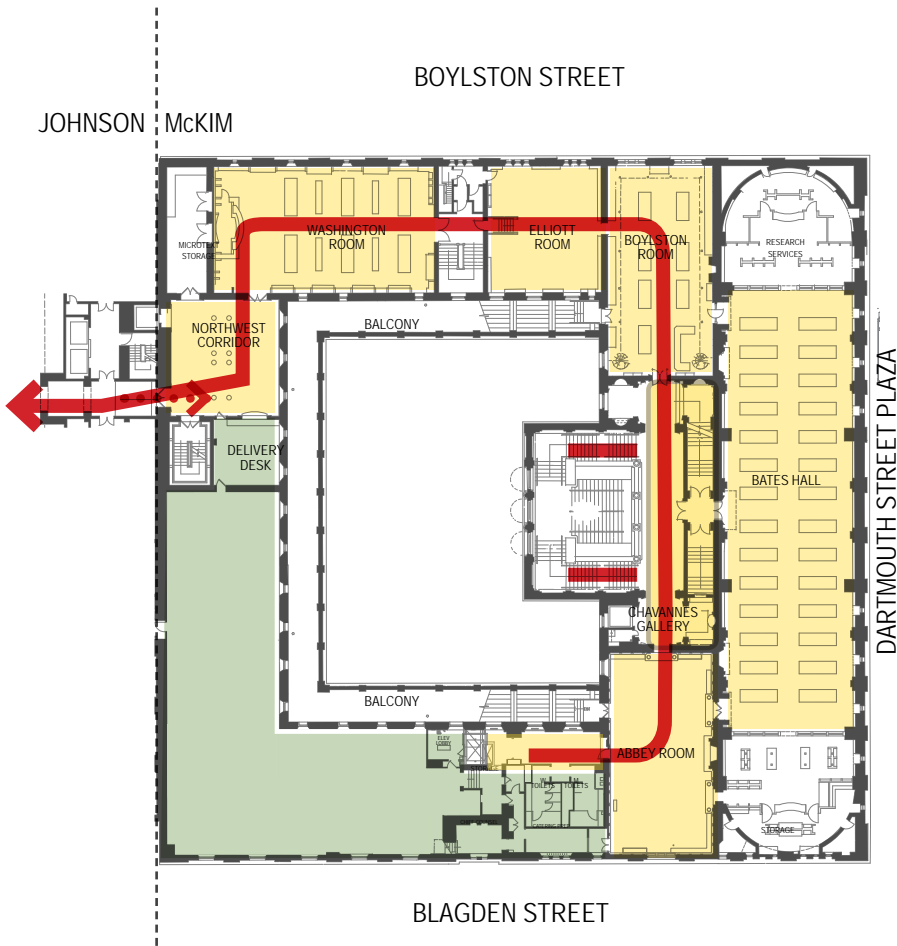
- Change in floor level at Chevrus Room
- Improve equitable access

Courtyard // Existing Public Movement



Level 1

Visitors have to use the exterior courtyard to move between McKim and Johnson Buildings.
This limits movement between buildings during inclement weather



Level 2

Visitors must pass through connected spaces to move between McKim and Johnson Buildings
This limits functions of these spaces.



Level 3

Level 3 currently closed to visitors except Sargent Gallery

Accessible and Legible

Improved Ramps and Lifts on First Floor

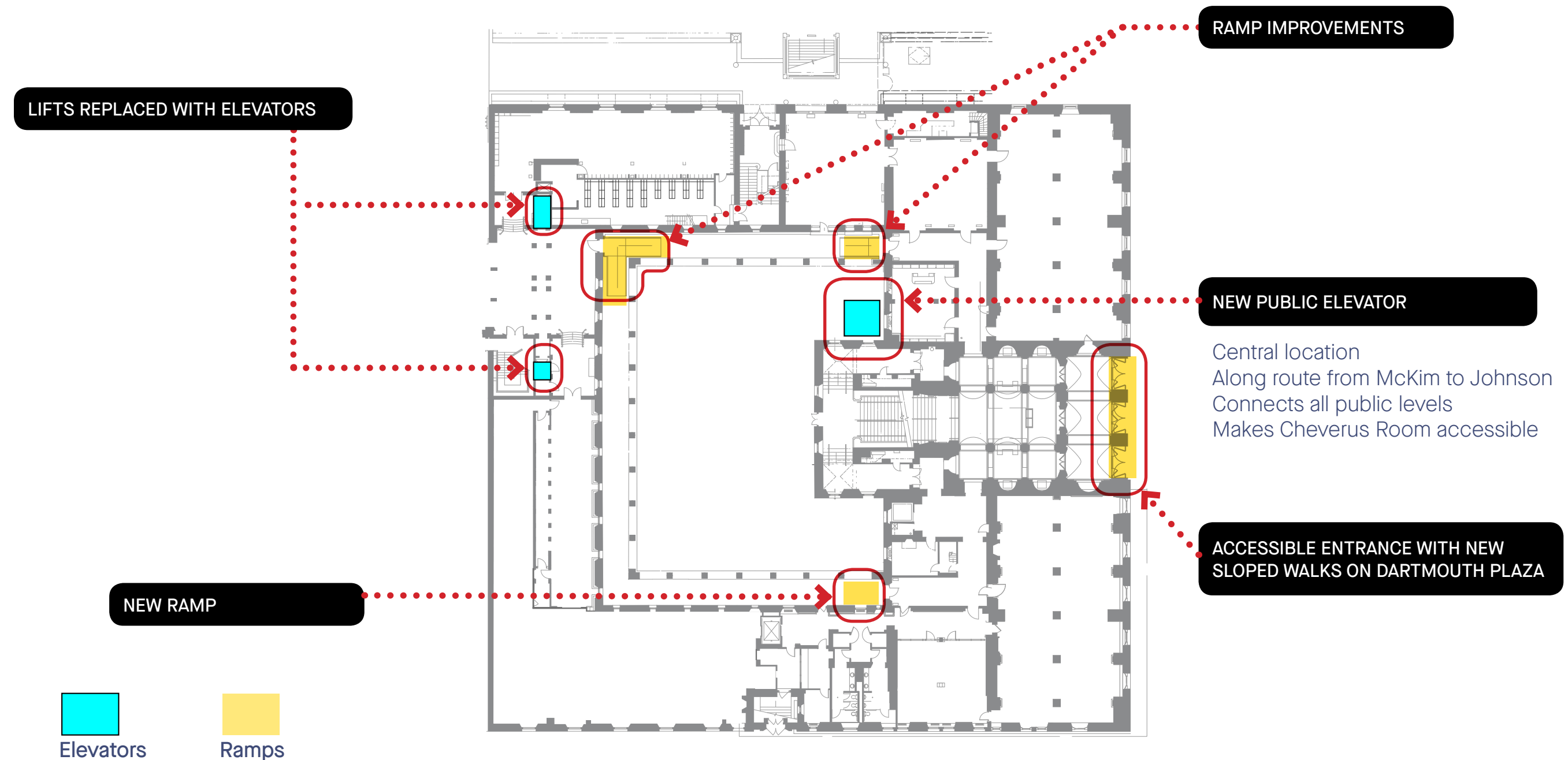
New Public Elevator

Simple and open connection between McKim and Johnson



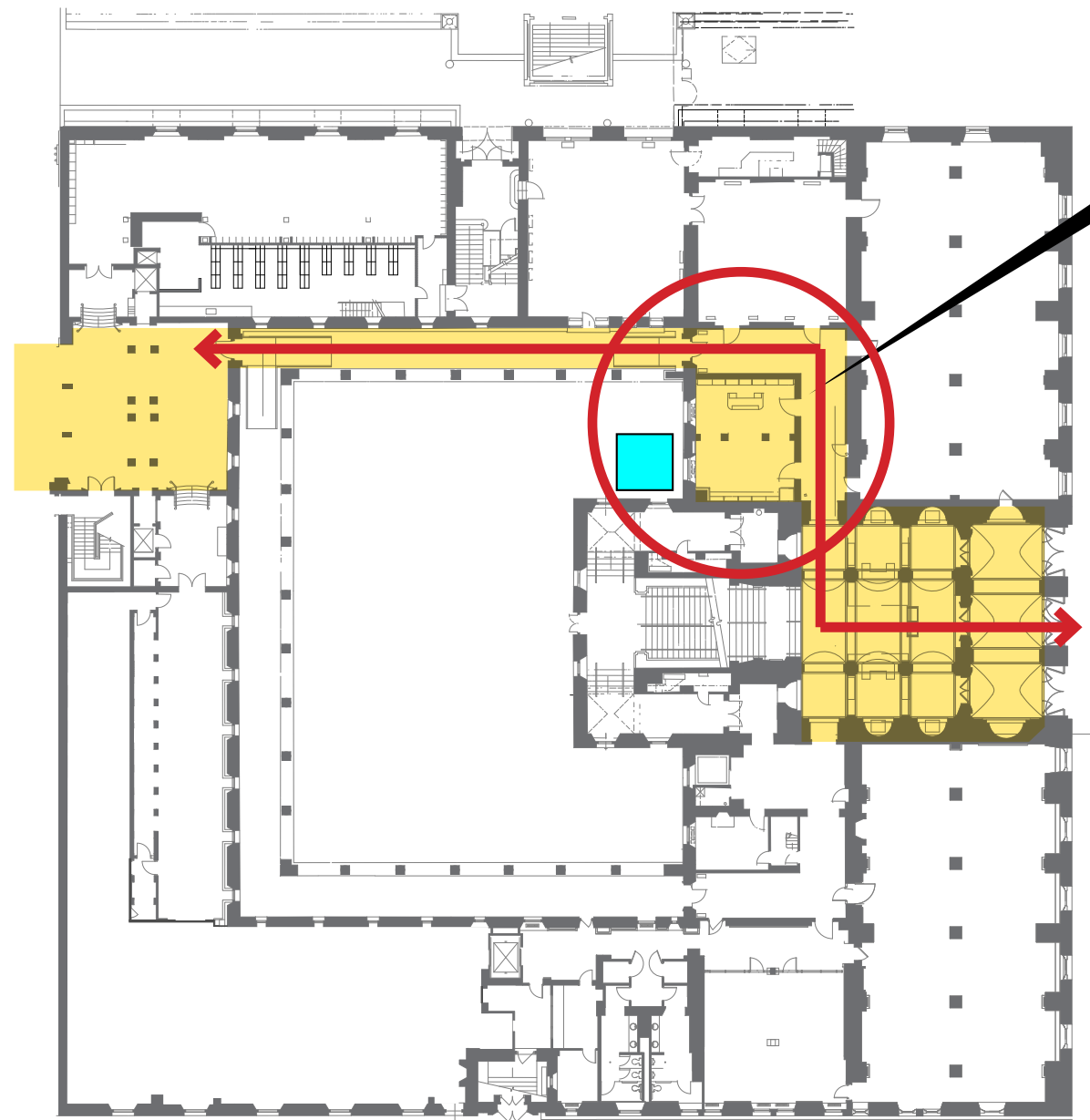
Accessible and Legible

Improved Ramps, Accessible Entrance, New Elevators



Accessible and Legible

Fluid connection from McKim Lobby to Johnson Lobby

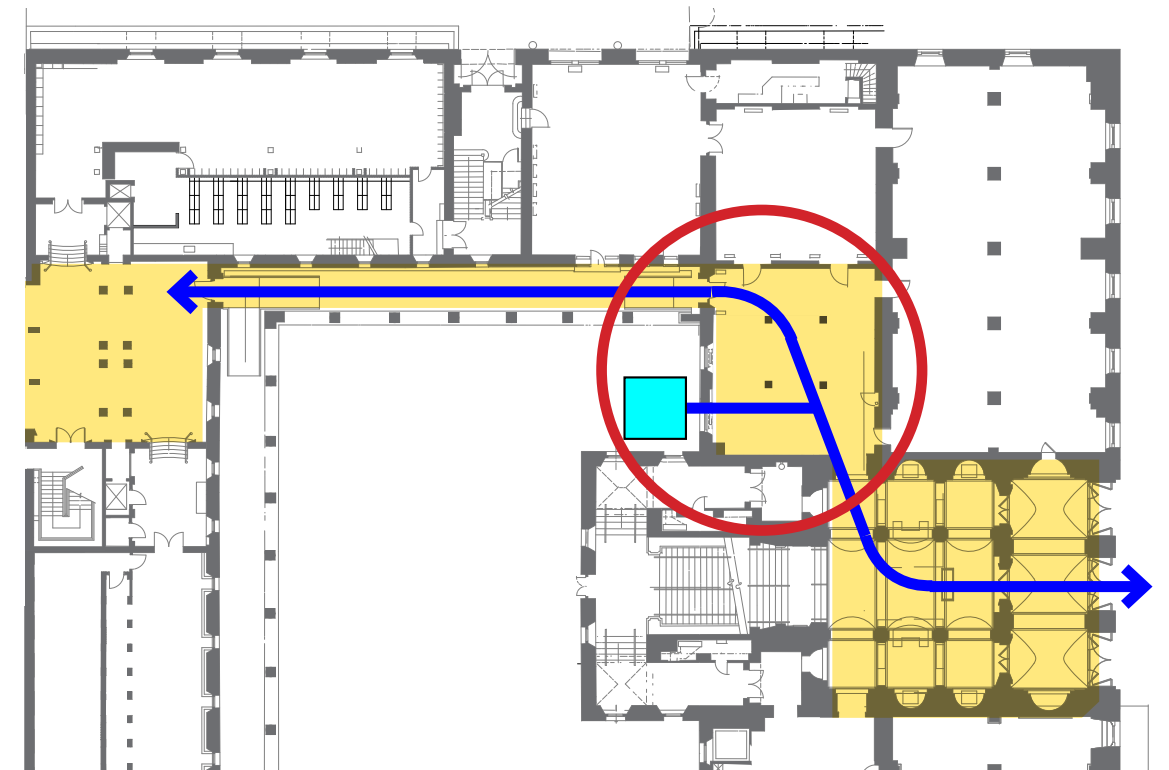


NEW WIDENED LOBBY SPACE

Improved wayfinding + views
Connection to new elevator

→
Existing
Circulation

→
Proposed
Circulation



Walls removed to open up pathways



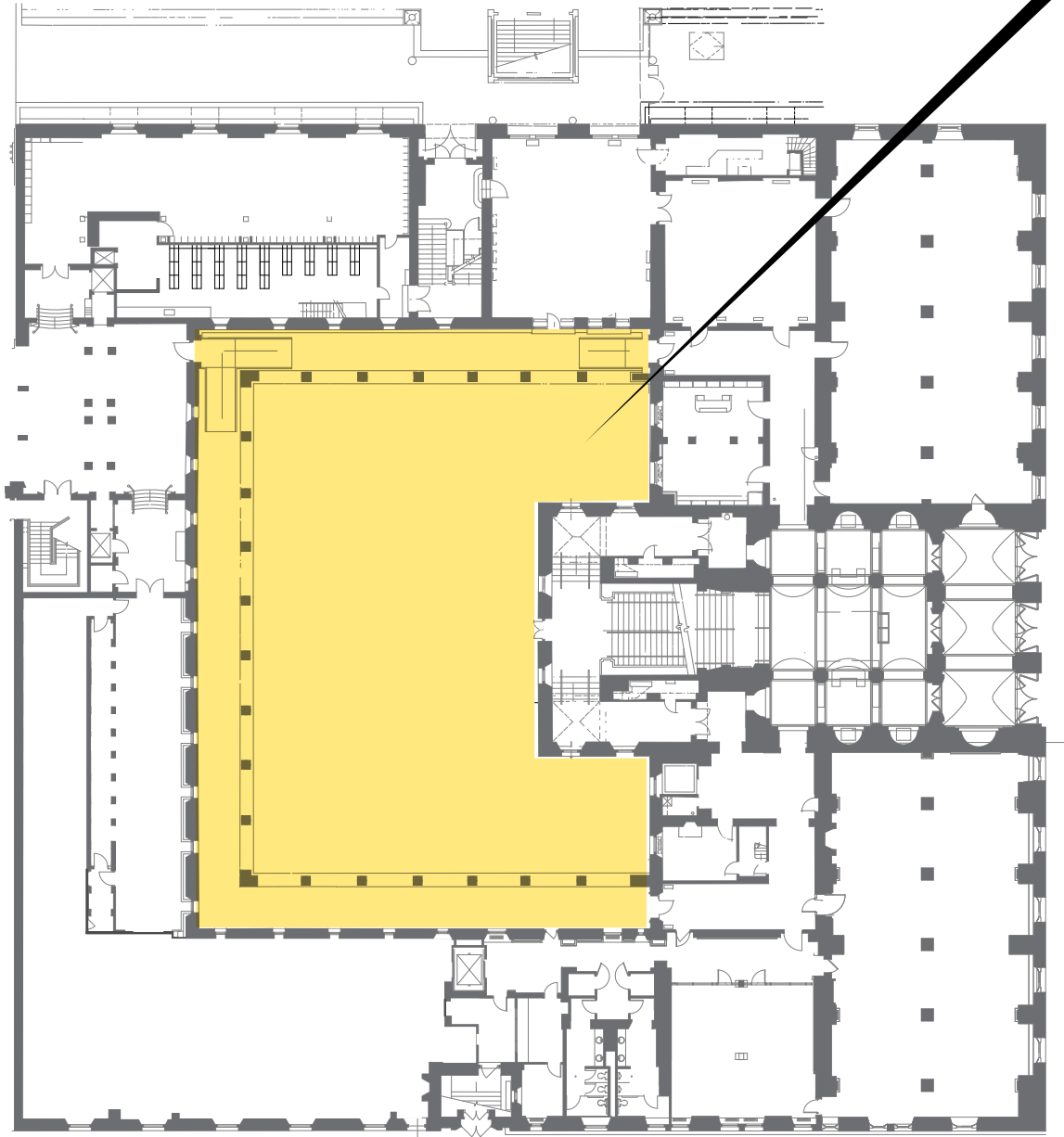
COURTYARD

*Enclose Courtyard to enhance
use all-year long*

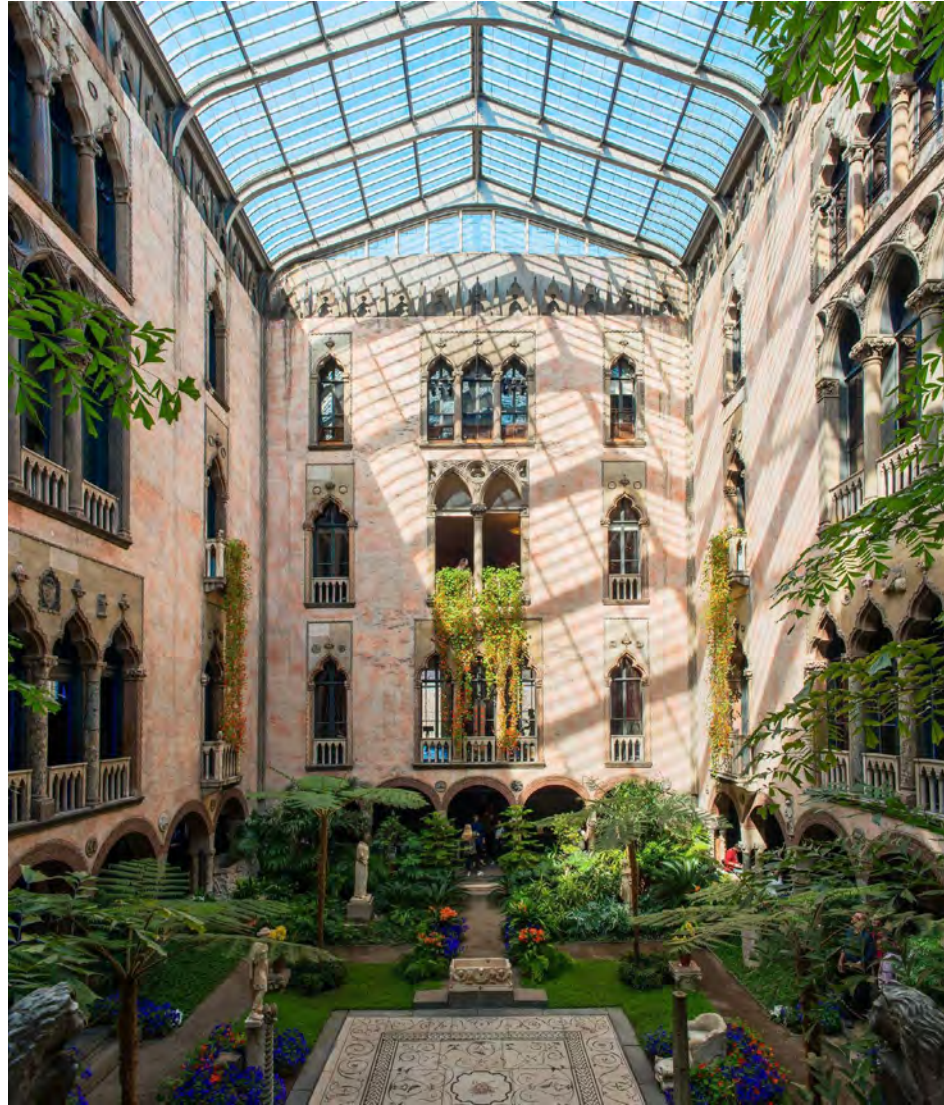
Courtyard Enclosure // Vibrant and Connected all-year long

TRANSFORM COURTYARD

- New opportunities to expand library programs
- Improves accessibility
- Preservation of architectural components
- Skylight enclosure
- Maintain gardens and fountain year-round



Courtyard Enclosure // References



Isabella Stewart Gardner Museum
Boston, MA



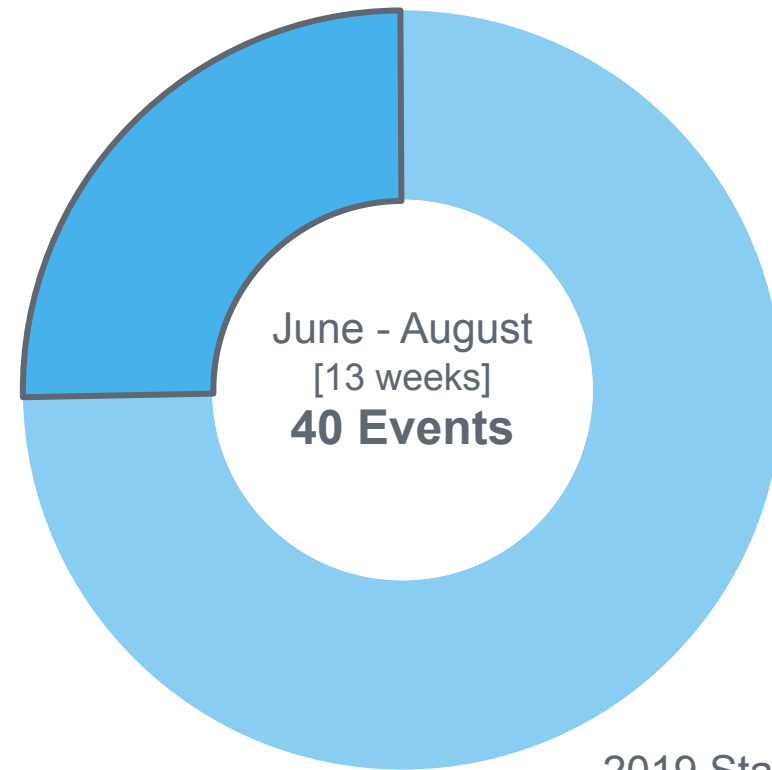
Museum of Fine Arts
Boston, MA



Smithsonian American Art Museum
Washington, DC

Courtyard Enclosure

Library Program Benefits

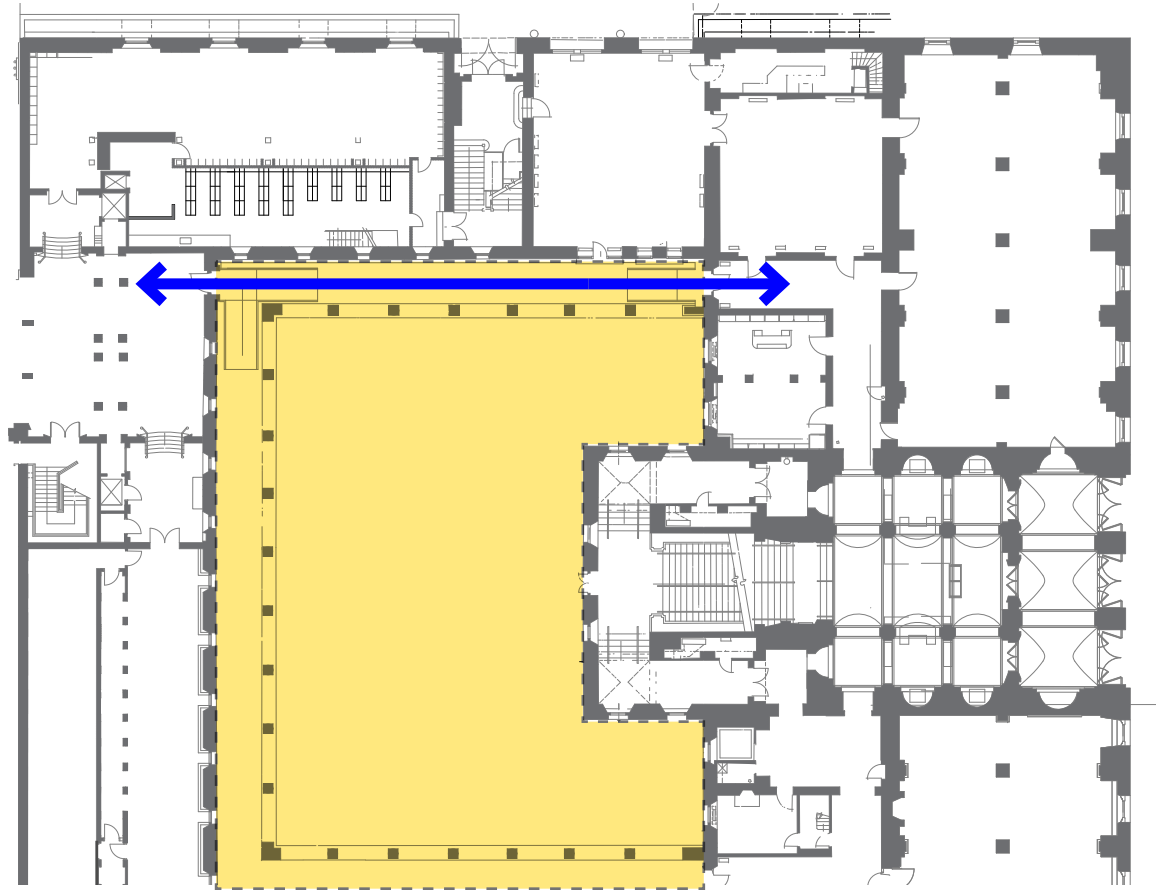


2019 Statistics



Courtyard Enclosure

Indoor connection between Johnson and McKim on the first floor



Level 1 Improvement:

- Pathway becomes continuous indoor space
- Maintain landscape design and plantings

Courtyard Enclosure

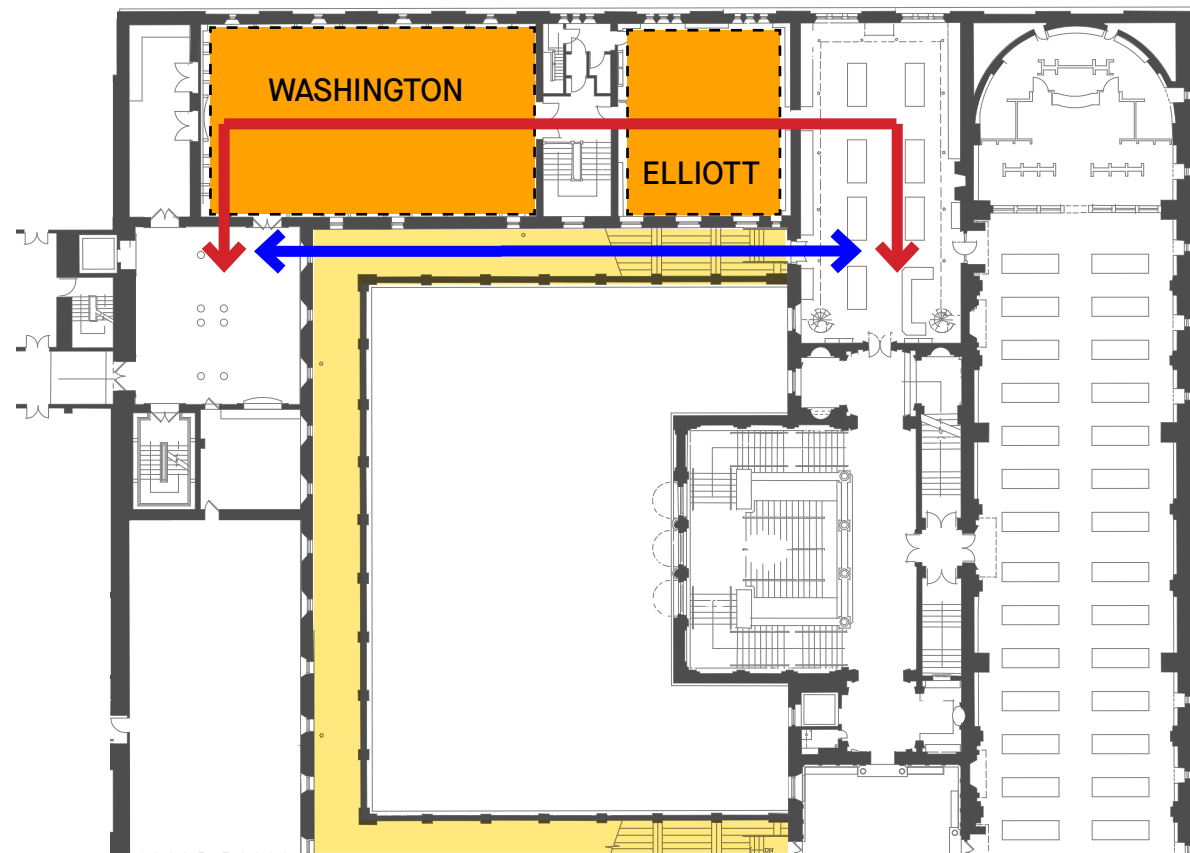
Continuous indoor pathway to public areas on the 2nd floor



Existing Circulation



Proposed Circulation



Level 2 Improvement:

- New accessible indoor pathway allows Washington and Elliott to be used for program functions



WASHINGTON ROOM



ELLIOTT ROOM

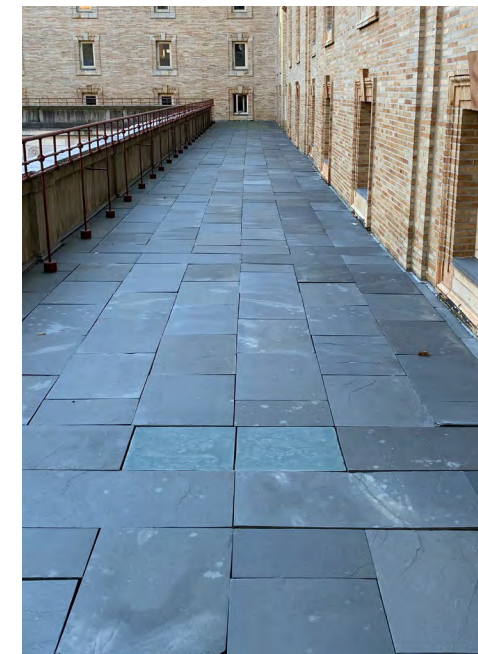
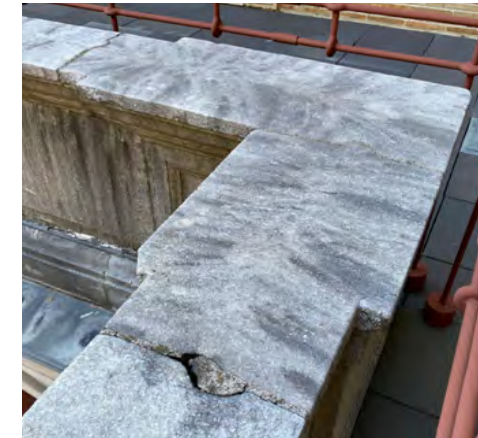
Courtyard Enclosure

Building Conservation Benefits

Protect the historic McKim Building from further weathering and deterioration

Stabilize interior environments in courtyard facing rooms housing special collections

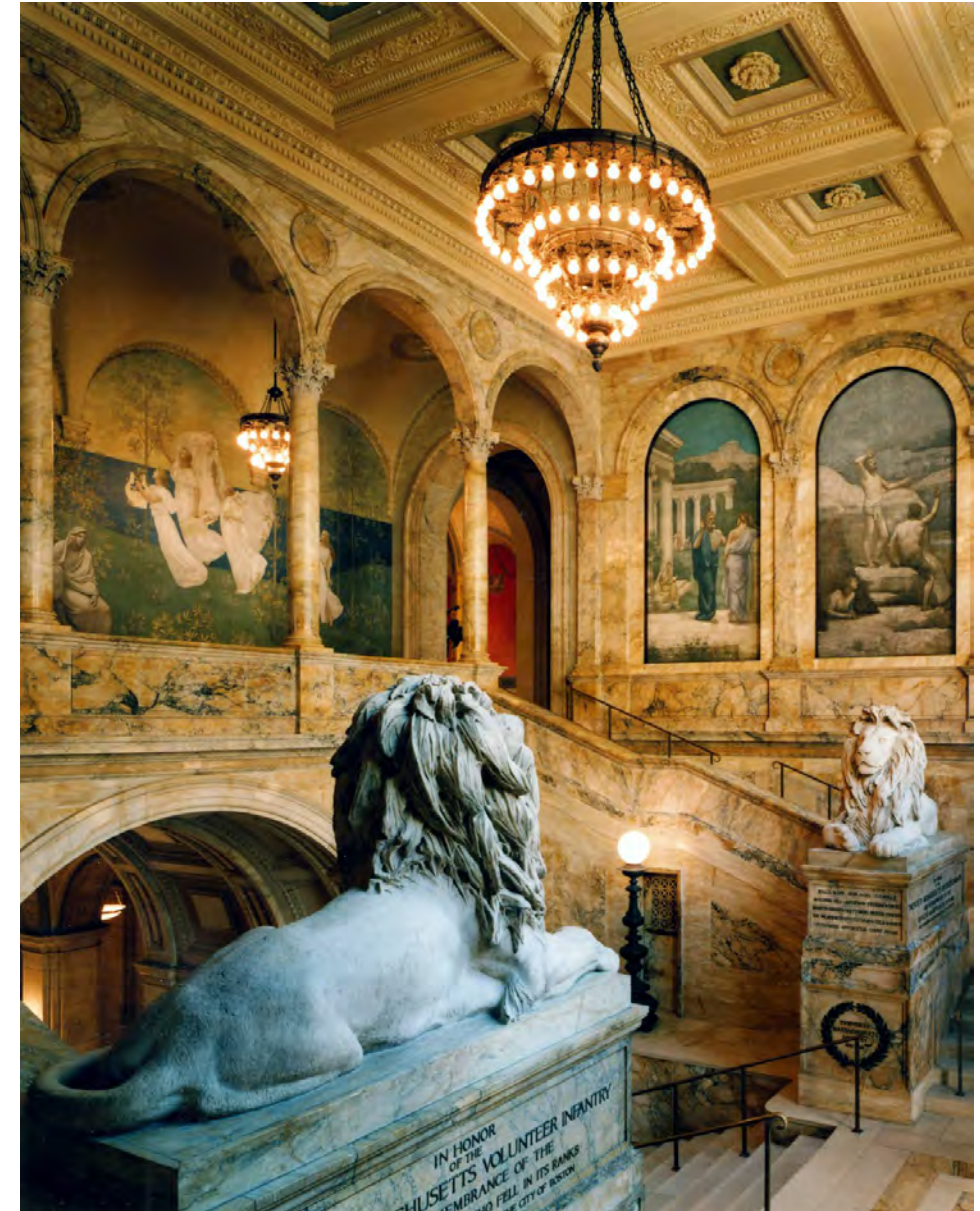
Simplify restoration of courtyard facing windows



YOUR QUESTIONS AND FEEDBACK:

Proposed Strategies:

- *Connect to Dartmouth Street Plaza + Copley Square*
- *Restore and renovate to improve the public experience*
- *Improve accessibility and way-finding inside and outside*
- *Enclose Courtyard to enhance use all-year long*



Prompts for Discussion

Join the Conversation

1. What resonates with you?
2. What do you feel is missing?
3. How can we make the physical spaces of the library a better representation of Boston's diversity?
4. What programs would you like to see activate the new McKim Building spaces?

General Information

Join the Conversation

To mute or unmute yourself:



Click on the microphone in the lower left of your Zoom window

or



If you are calling in from your phone, press *6

If you are unable to stay for the discussion:

Be sure to visit the project page for the recording of this meeting, an online survey, and other project related updates



www.bpl.org/mckimmasterplan/



SCAN ME

Thank you for joining us!

Boston Public Library

David Leonard, *President*

City of Boston

Kim Janey, *Mayor*

Dion Irish, *Chief of Operations*

Kerrie Griffin, *Director of Public
Facilities*



**SHEPLEY
BULFINCH**

designLAB architects

SSOLS