



# Getting On a Channel in Zoom for Interpretation

## Seleccione un canal en Zoom para escuchar la interpretación

After we activate interpretation, look for the options below as applicable...  
Después de que activemos la función de interpretación, elija entre las opciones de abajo...

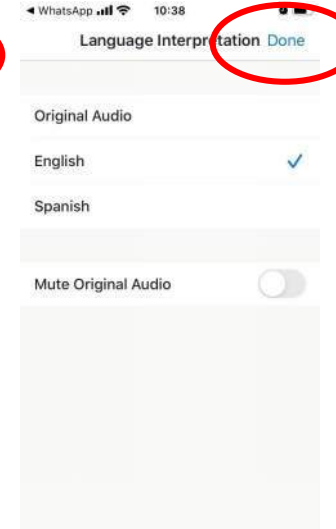
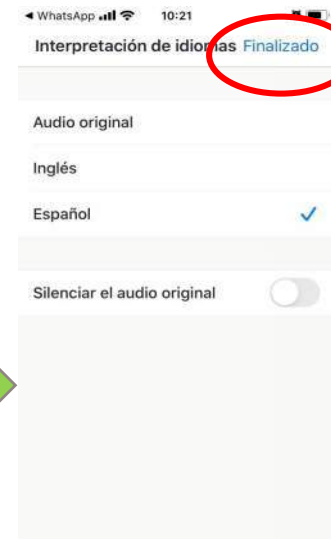
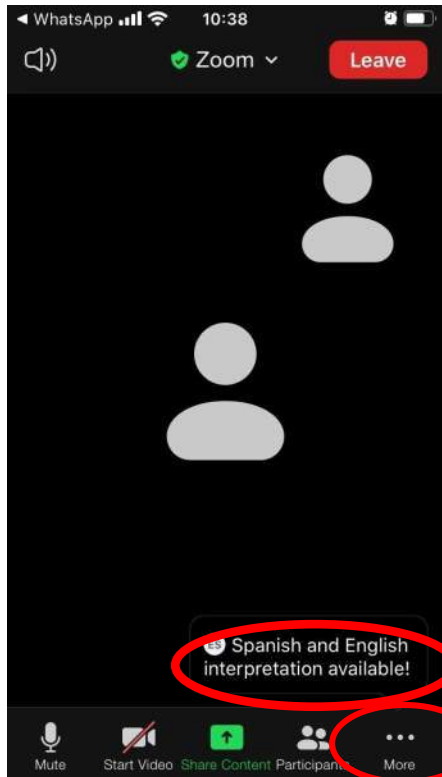
If you have a laptop/desktop:  
Look for the globe and select English or Spanish

Si tiene computador  
busque el globo  
terráqueo/mundo y escoja  
Inglés o Español

OR



Smartphone  
Celular



## Meeting Format

*This meeting includes a oral and visual presentation via zoom and several ways to express your opinions and perspective.*

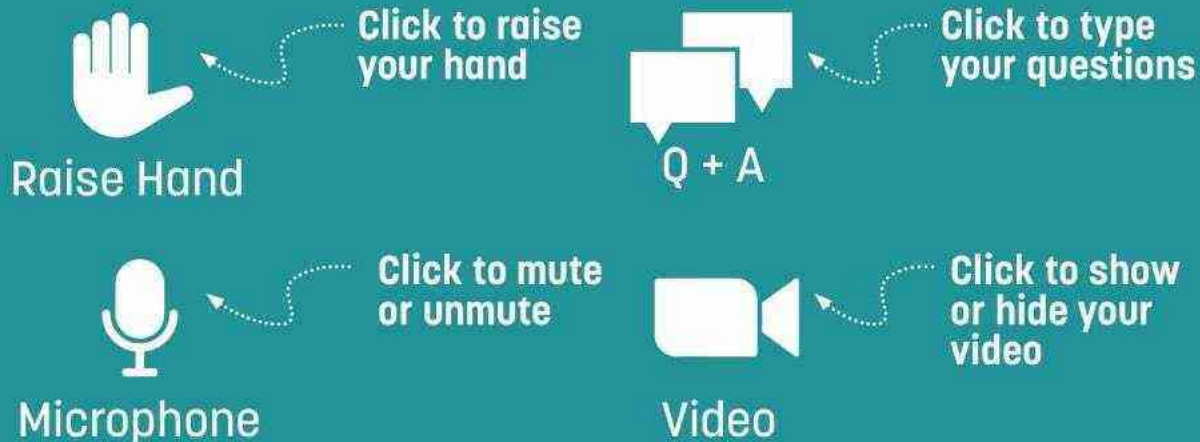
*Please stay muted during the presentation, and you'll be able to speak up during Q+A.*

*If you would like to use the chat, please wait until the Q+A.*

*We ask that you keep each comment to 2 minutes.*

## Have A Question?

**JOINING BY WEB** (Computer, Tablet, etc):



**JOINING BY PHONE** (Dial): **267 831 0333** + use Meeting ID 974 7671 2083

Press \*9 to raise your hand

Press \*6 to unmute/mute yourself

## Participate in Live Polling

**JOINING BY PHONE:**

Text SASAKIPOLLS to 22333  
to join the session.

**JOINING BY WEB:**

Navigate to  
[pollEV.com/sasakipolls](https://pollEV.com/sasakipolls)



City of Boston  
Mayor Kim Janey

Dion Irish, Chief of Operations

Kerrie Griffin, Director, Public Facilities Department

Sheila A. Dillon, Chief of Housing and Director of Neighborhood Development



David Leonard, President

# CODMAN SQUARE BRANCH LIBRARY

## Programming Study

**COMMUNITY MEETING #2**  
**July 29, 2021**

# SASAKI

**01 INTRODUCTION**

**02 WHAT WE'VE HEARD FROM YOU**

**03 BUILDING PROGRAM**

**04 DISCUSSION**

# Meeting Format

*This meeting includes a oral and visual presentation via zoom and several ways to express your opinions and perspective.*

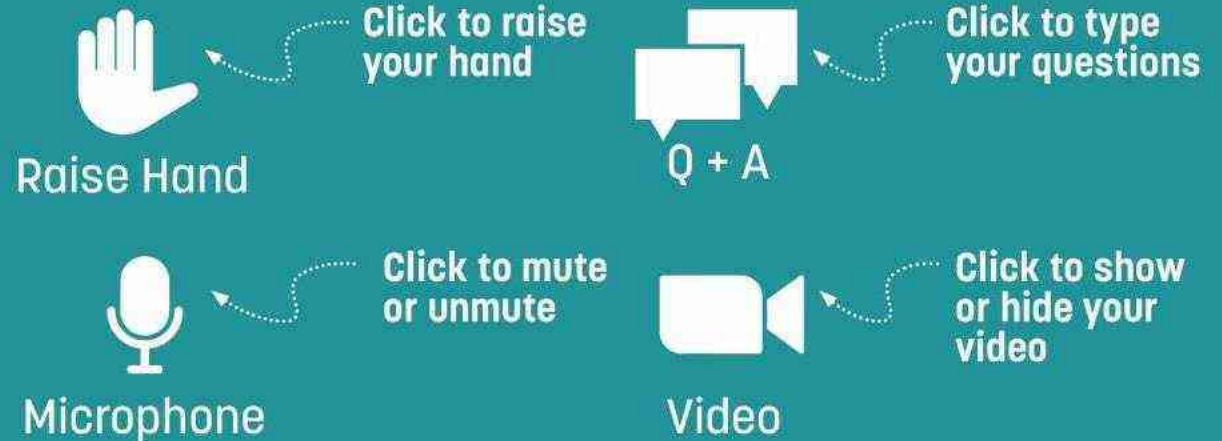
*Please stay muted during the presentation, and you'll be able to speak up during Q+A.*

*If you would like to use the chat, please wait until the Q+A.*

*We ask that you keep each comment to 2 minutes.*

## Have A Question?

**JOINING BY WEB** (Computer, Tablet, etc):



**JOINING BY PHONE** (Dial): **267 831 0333** + use Meeting ID 974 7671 2083

Press \*9 to raise your hand

Press \*6 to unmute/mute yourself

## Participate in Live Polling

**JOINING BY PHONE:**

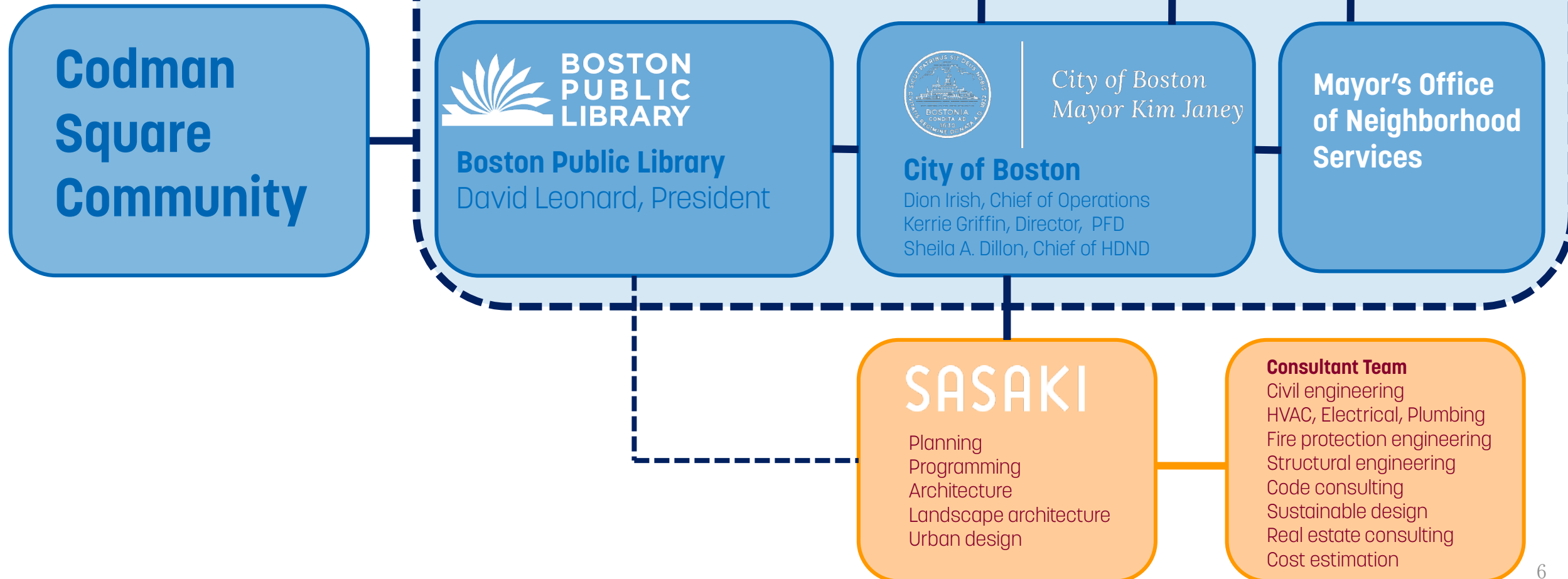
Text SASAKIPOLLS to 22333  
to join the session.

**JOINING BY WEB:**

Navigate to  
[pollEV.com/sasakipolls](https://pollEV.com/sasakipolls)



# Project Team



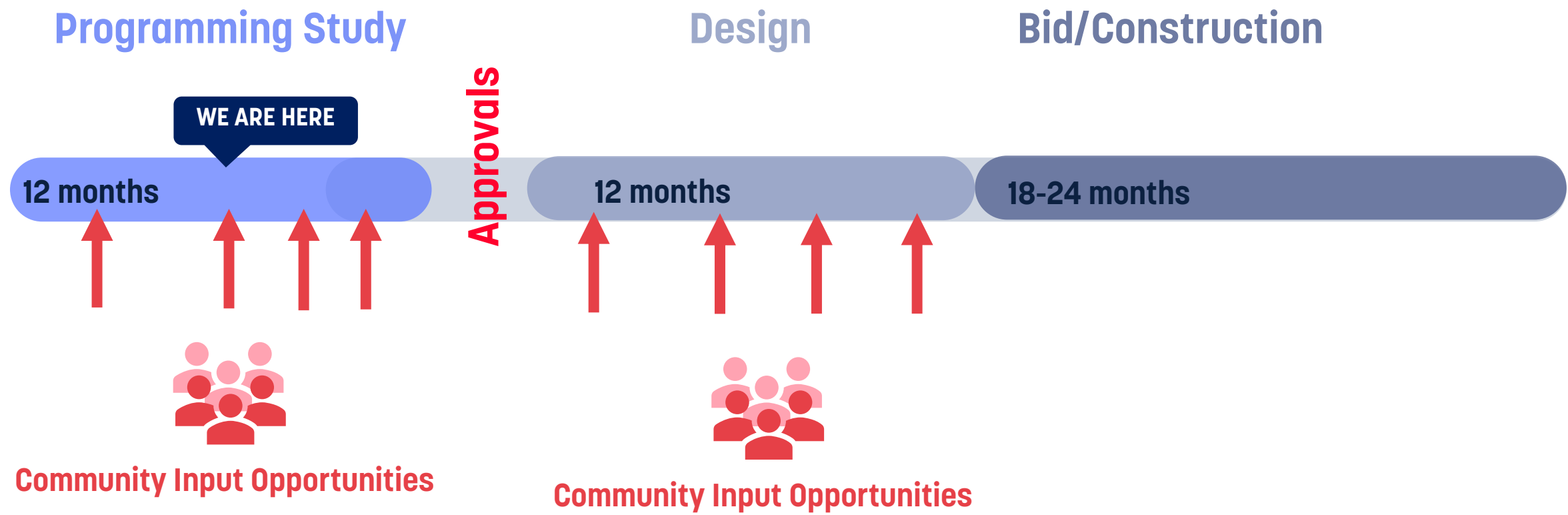
# Project Introduction

The City of Boston and Boston Public Library are beginning a study of the Codman Square Branch. This study will collect information about the Branch Library and the community it serves. It will set priorities for library services and design. Finally, it will explore options for renovation, addition, and replacement of the building.

## Goals of the Study

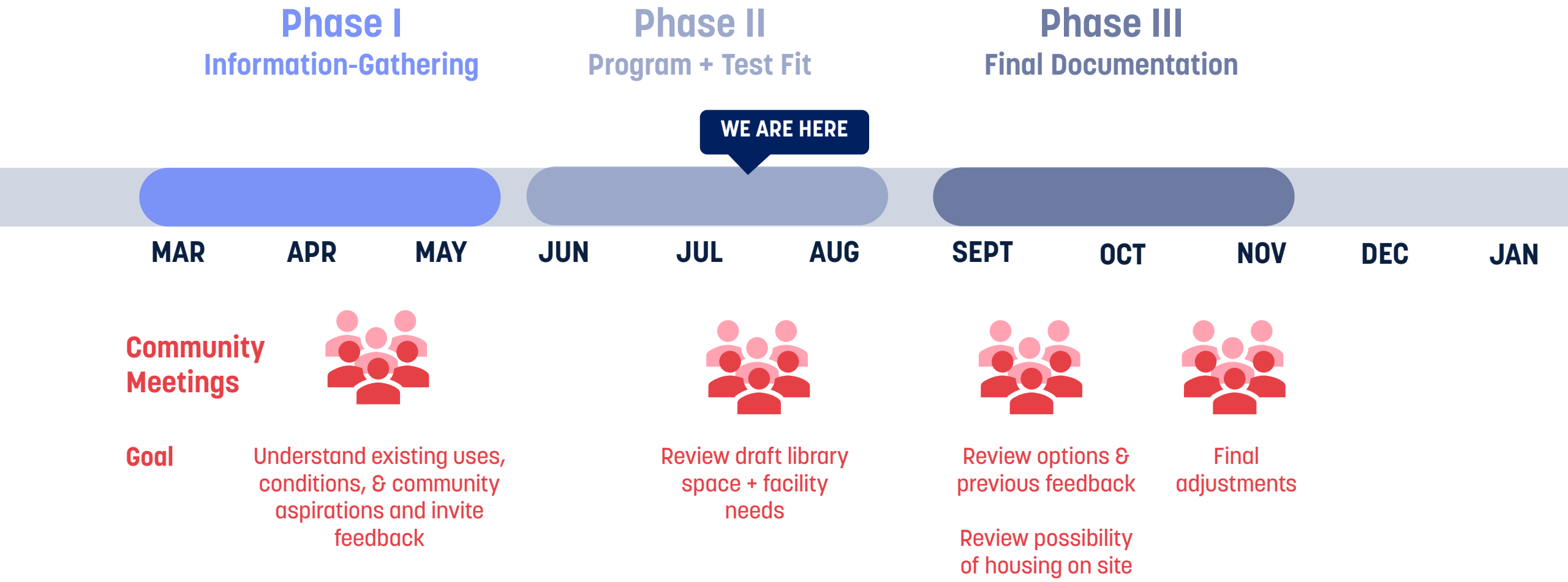
- Collect information about the Codman Square branch and the community it serves
- Work with the community to establish program and design priorities
- Assess the existing building and site
- **Develop a library building program**
- Explore options for renovation, addition, and replacement of the building
- Establish building systems and cost parameters for each option
- After establishing library needs, determine whether it is possible to add housing to the site while meeting all of the library's needs
- Provide recommendations to the City for moving forward with the project

# Typical Project Schedule





# Study Schedule



# **What we heard**

## Feedback from the first community meeting

1. The branch is well used in the neighborhood – a home away from home for some kids!
2. Branch staff is amazing – grateful for them!
3. More welcoming entrance; all spaces should be accessible
4. Improvements needed for the Children's area and for the teens
5. Need more space for senior programs – space for painting, sewing, etc.
6. Need better acoustic zoning of the multiple uses that happen inside the building
7. Neighborhood groups would love to have use of the community room
8. Desire for a building that is green, advances community engagement, and intergenerational use
9. Fair Foods operates in front of the building now – preserve this use of the outdoor space
10. Support for food programming
11. Safety and maintenance of all areas inside and outside the branch should be considered
12. Curious to learn more about the housing

**Children**

**Teens**

**Seniors**

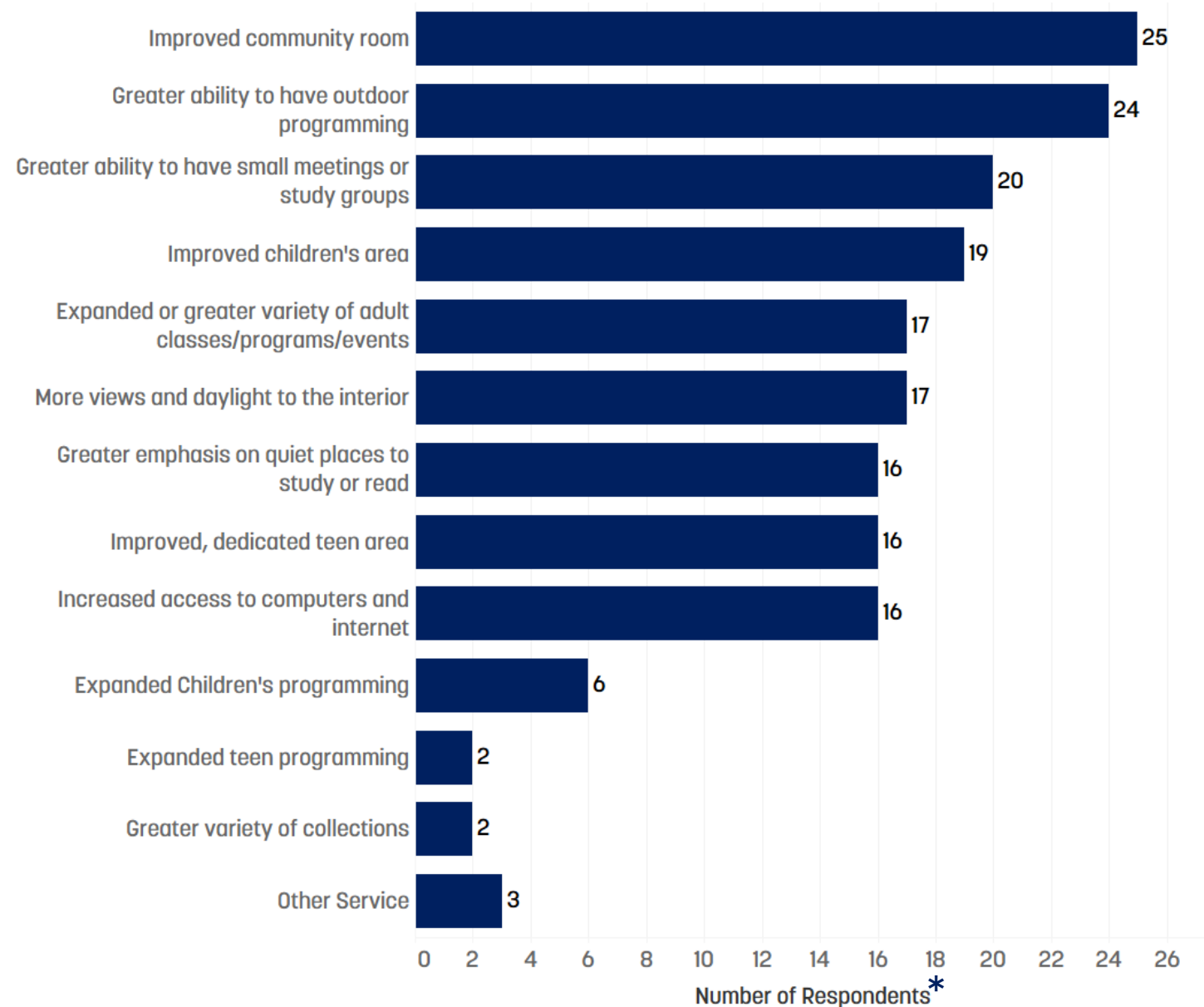
# Survey update

...the survey is still open!

## How could the library better serve the Codman Square neighborhood?

- A variety of spaces to hold different events or programming is needed
- A larger African-American series/collection
- Teen programming:
  - Financial literacy
- Children's programming:
  - More reading events (e.g. Saturday story time)
  - More interactive events
  - Better seating so families can sit and read comfortably
- More advertising of programs

\*sampling of responses as of 7/1



# Emerging program and service priorities

## COMPASS PRINCIPLES

- User-Centered Institution
- Community Gathering
- Special Collections
- Center of Knowledge
- Children and Teens
- Access and Innovation
- Sustainable Organization
- Fun

- **Codman Branch is a hub for accessing entire BPL collection**
- **Codman Branch hosts extensive programming**
- **Need for meeting spaces of all sizes**
- **Building should allow for multiple activities to happen at once – for instance, children’s and adult programs**
- **Architecture should be more welcoming and make library activities more visible**
- **Outdoor green space is important to the community**
- **Users feel at home here; it is a center for the community. Yet, at times the main reading room feels underutilized.**

# Program + Design Goals

1. Welcoming building, inside and out; plenty of windows
2. Appropriate space for collections, computers, and study seats
3. More functional large community room
4. Additional, acoustically enclosed meeting spaces of different sizes
5. Better definition between adult, children's, and teen spaces
6. Improved acoustics
7. Improved daylighting and finishes
8. Sight lines and staff spaces that function well
9. A very sustainable, energy-efficient building
10. Outdoor space, including garden beds and space for reading and programs

Entry +  
Service

Adult +  
Collections

Program + Event  
Spaces

Teens

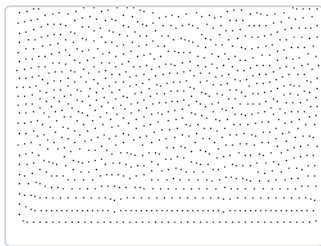
Children

Staff Spaces

# Did we capture the priorities? What did we miss?



## Did we capture the priorities? What did we miss?



### Responses

Bright parking lot in the back

a way for the build space to blend into the green natural space in the back

a more formal outdoor programming space, like for theater productions, school plays, concerts, classess

a kitchen

Traffic study but also an analysis of parking needs (I realize this might relate to housing but it is important anyway.

larger and more diverse book collections

Space and staff for teens

Direct access to the outside for after-hours activities.

multiple rooms to hold various community events on the same day, study rooms

fi

Youth center on an upper level floor

multiple commuity rooms for residents to use

We're saying children and teens; maybe have that language inclusive of families?

some youth have no other safe space to go to and the library closes too early in our area

Greenhouse

Windows!

Green space

longer hours for students to study in safety

defensible space

technology, accessible tools especially for youth with disabilities, space for caregivers, youth area, different floors and more open space format



Engagement

38

Responses

## Responses

underground parking if you must do housing. The area is dense already

space for children to wait for their rides safely

Community technology: a fab lab with a 3D printer, for instance, that encourages families to participate and use/develop digital literacy

Housing for foreign exchange students 1 bedrooms

better access for handicapped, especially out doors

sensory area

more seating on outside also

Discrete programming spaces

More evening hours to allow working people to use the library in the evening.

more lighting

Larger teen space

crossing the street is dangerous event with the parking spaces that were removed

more computers and printers

More windows

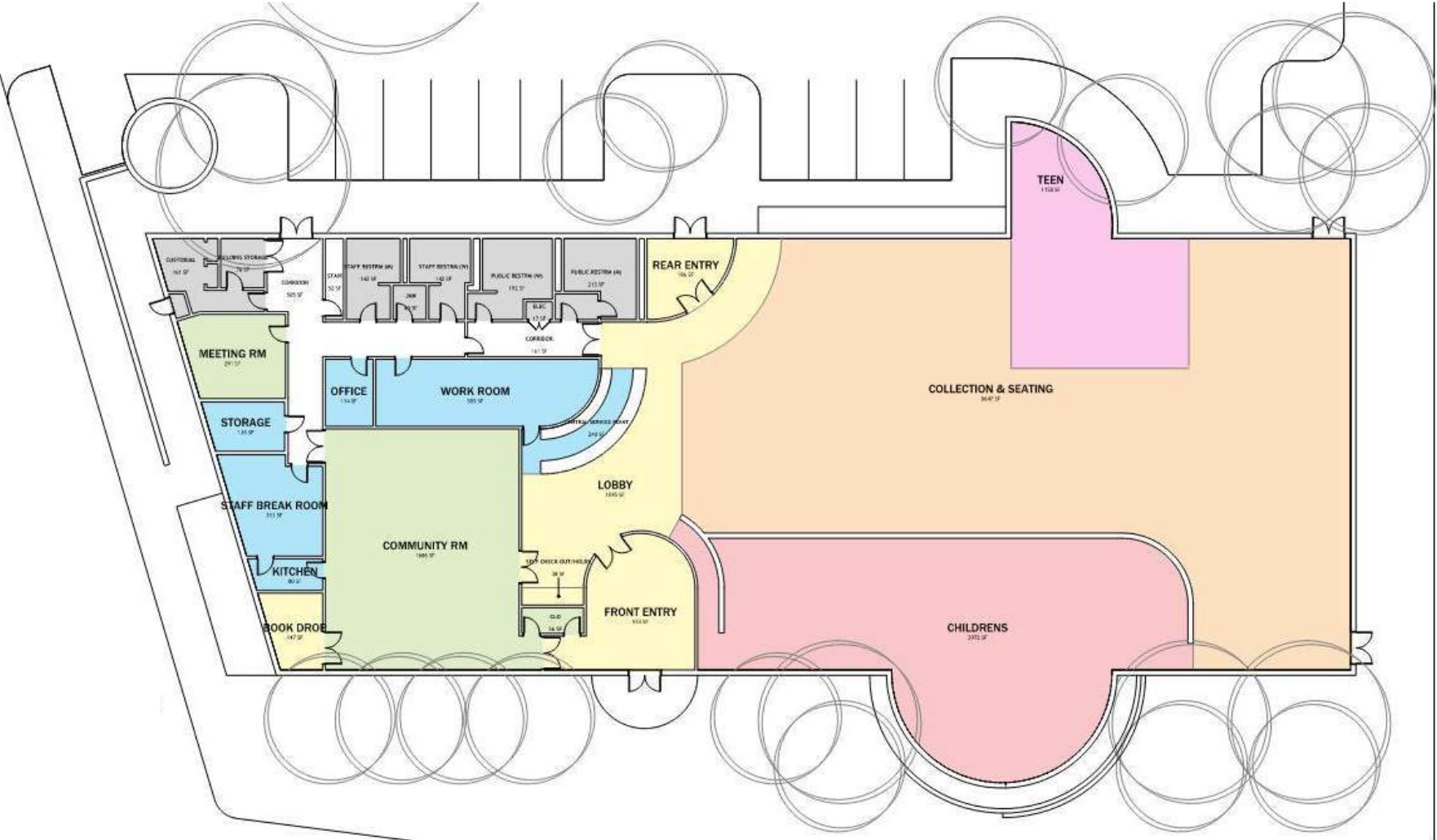
more natural light

This may be too detailed; spaces where neighborhood history can be displayed and shared. Greater connection between the building and the Walton Street side, where it is hard to see what is going on.

We need to include a traffic study around the immediate area with a focus on the crosswalks and visibility on Washington St.

A community garden

# Existing Use Distribution

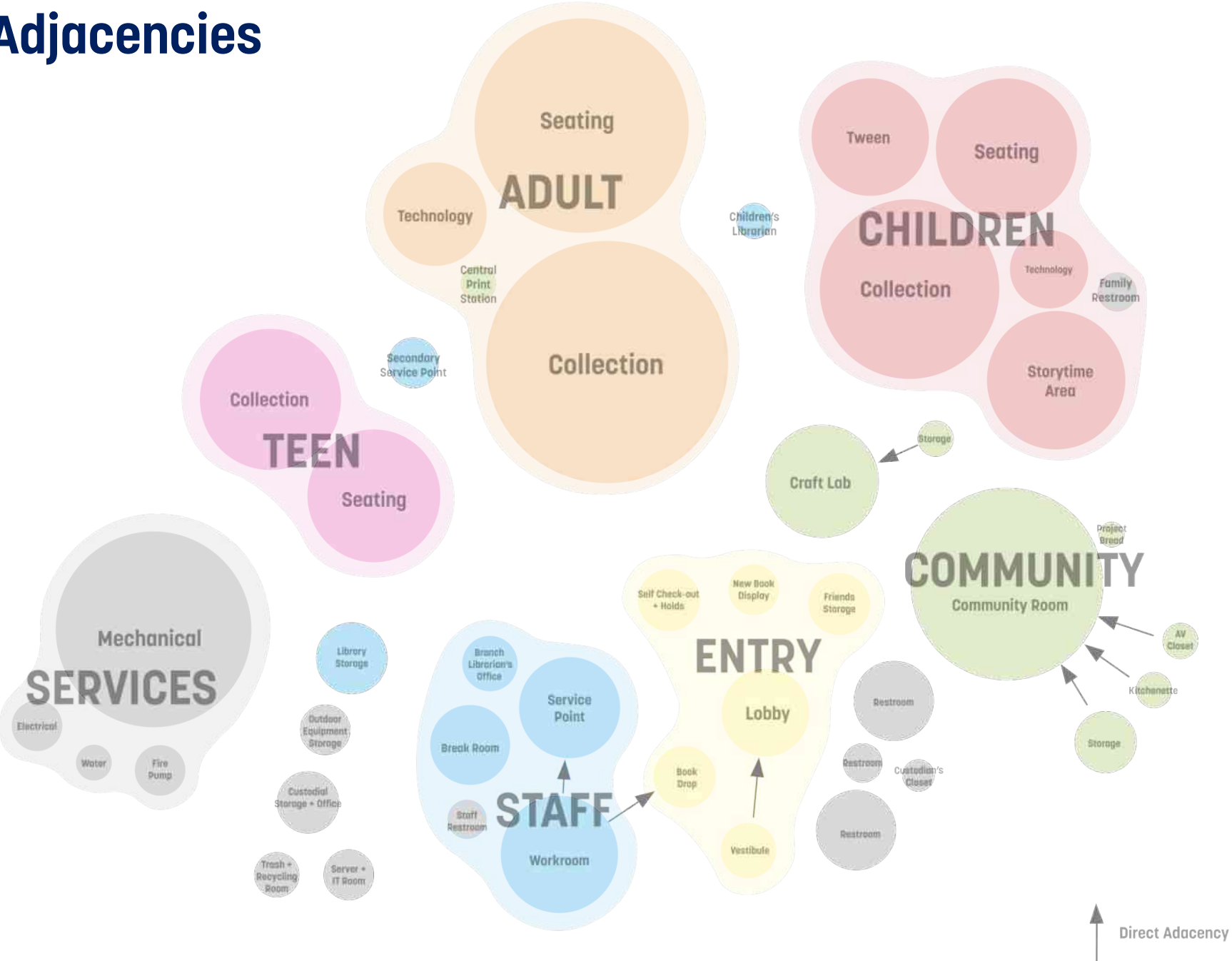


TEEN	340 SF
ENTRY ZONE	970 SF
STAFF	1,220 SF
SUPPORT	2,200 SF Includes 2 <sup>nd</sup> floor mech. zone
COMMUNITY	2,210 SF
CHILDREN	2,970 SF
ADULT	8,550 SF
NET SF	18,460 SF
GROSS SF	22,000 SF

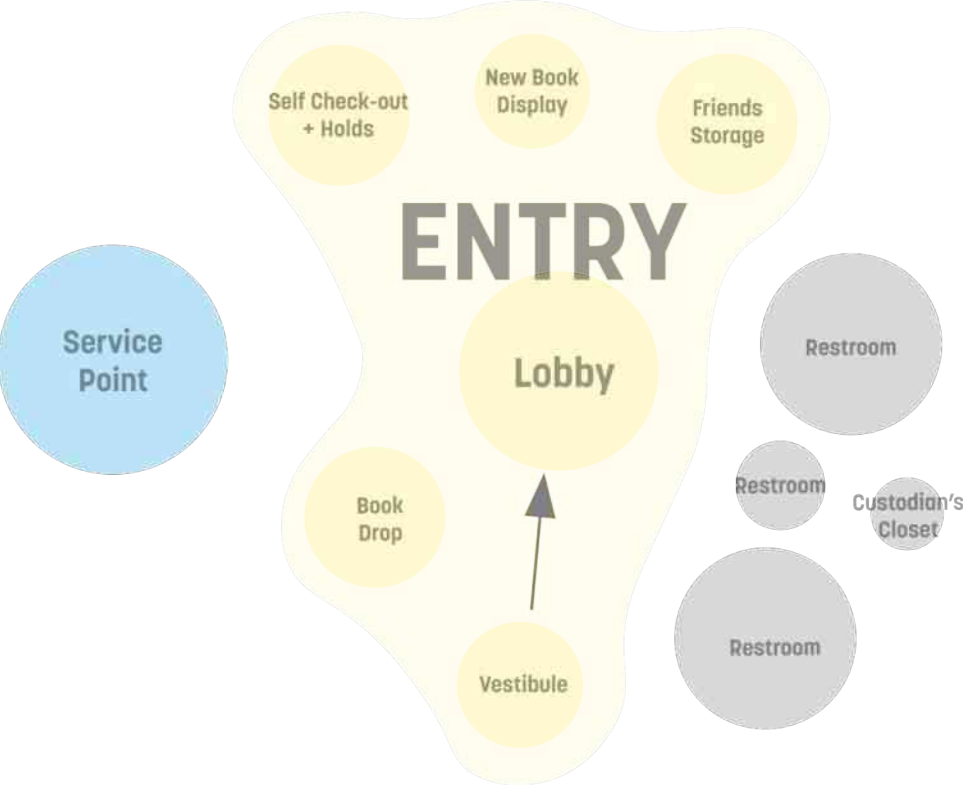
# Proposed Uses

<div>ENTRY</div> <div>LOBBY SELF CHECKOUT + HOLDS NEW BOOK DISPLAY EXHIBITION/GALLERY WALL</div> <div>1,400 SF</div>	<div>ADULT</div> <div>COLLECTION SEATING TECHNOLOGY W/ PRINT STATION</div> <div>4,435 SF</div>	<div>TEEN</div> <div>COLLECTION SEATING</div> <div>1,310 SF</div>	<div>CHILDREN</div> <div>COLLECTION SEATING TECHNOLOGY TWEEN AREA STORYTIME AREA FAMILY RESTROOM</div> <div>3,665 SF</div>
<div>COMMUNITY</div> <div>COMMUNITY ROOM W/ KITCHENETTE CRAFT LAB MEETING ROOMS</div> <div>2,955 SF</div>	<div>STAFF</div> <div>SERVICE DESK(S) WORK ROOM OFFICE BREAK ROOM</div> <div>1,130 SF</div>	<div>SERVICE</div> <div>PUBLIC RESTROOMS ALL-GENDER RESTROOM CUSTODIAL SPACES OUTDOOR EQUIPMENT STOR. TRASH &amp; RECYCLING ROOM OTHER BLDG SUPPORT SPACES FRIENDS STORAGE</div> <div>2,780 SF</div>	

# Program Adjacencies



# Space Types Entry



Brooklyn Public Library Central Branch, NY



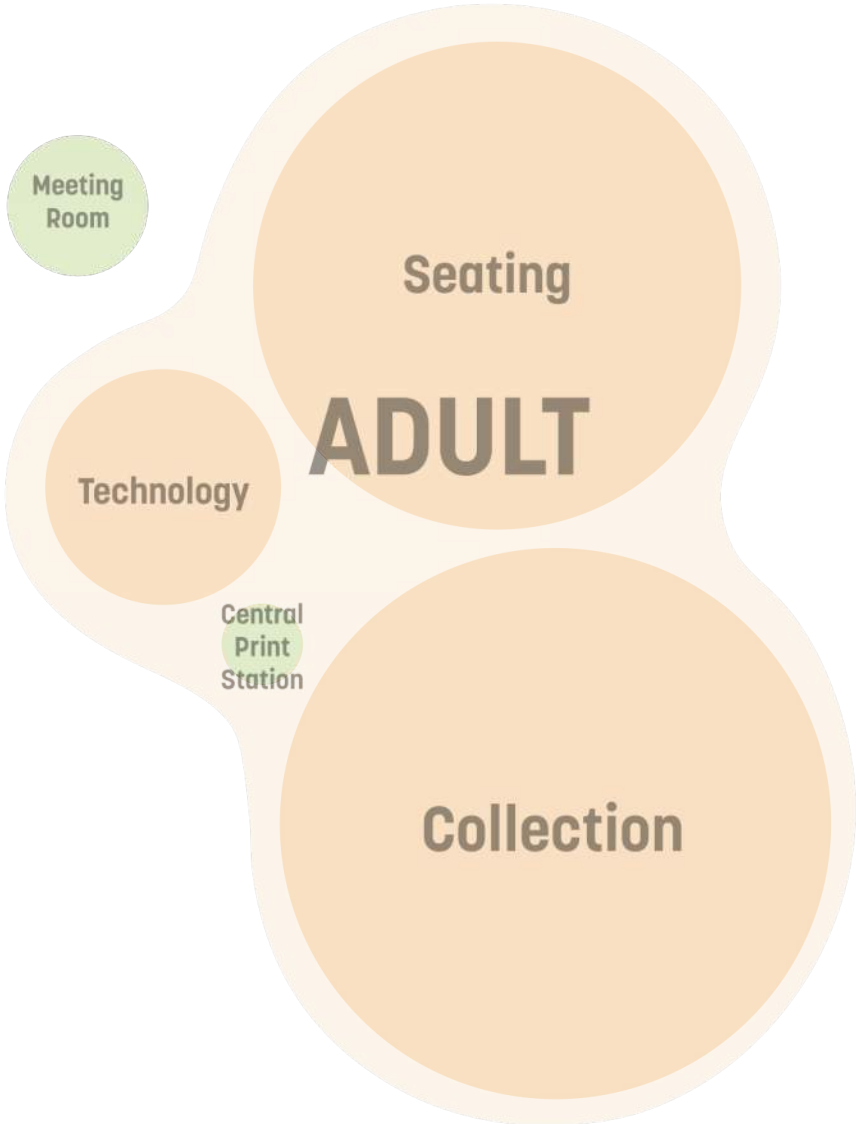
BPL Mattapan Branch, Boston, MA



BPL Jamaica Plain Branch, Boston, MA



# Space Types Adult



BPL East Boston Branch, Boston, MA

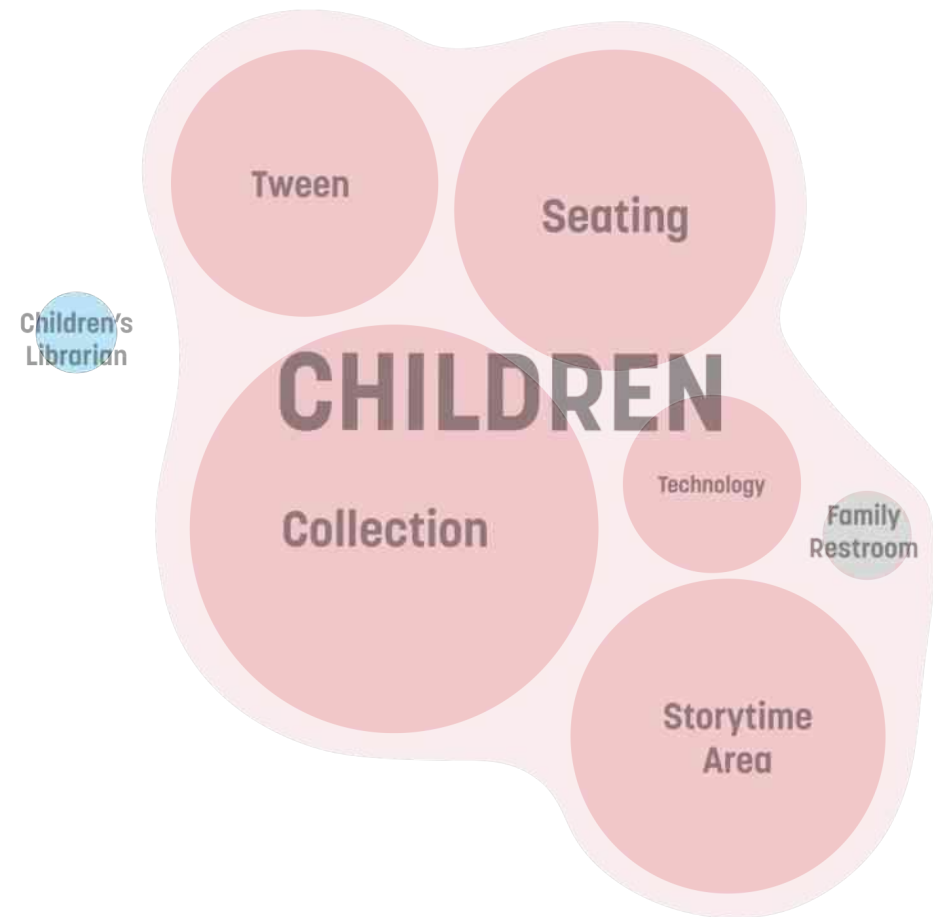


BPL Jamaica Plain Branch, Boston, MA



BPL Roxbury Branch, Boston, MA

# Space Types Children



BPL Central Library, Boston, MA



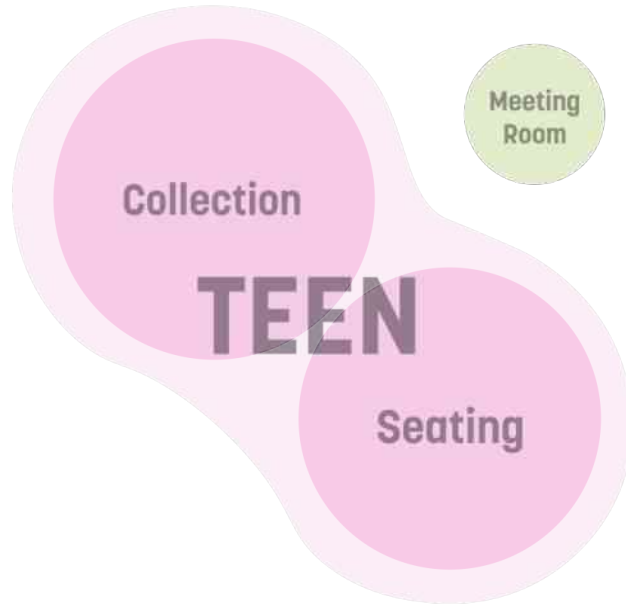
Half Moon Bay Library, CA



BPL Jamaica Plain Branch, Boston, MA



# Space Types Teen



BPL Mattapan Branch, Boston, MA



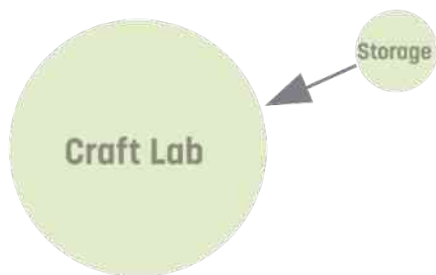
BPL Central Library, Boston, MA



BPL Roxbury Branch, Boston, MA

# Space Types

## Craft Classroom



Park Ridge Public Library, Park Ridge, IL



New Castle County Route 9 Library & Innovation Center, New Castle, Delaware



# What activitie(s) would you like to do in the Craft Lab?



## What activitie(s) would you like to do in the Craft Lab?

" local schools could also use "

" also need a place to safely store  
the work in progress, not in a  
storage closet "

" knitting classes "

" All of these activities would

### Responses

STEAM - science, technology, engineering, the arts, and mathematics

All of these activities would require staff or volunteers to implement programs; how would this be taken into account in the library's thinking?

we need a teaching kitchen....we should learn to grow our food and cook our food based on our cultural traditions

helping local elementary schools use the space easily, too

a place to do family research to understand roots and history

Innovative activities ; STEM kits

a maker's workshop is different from a conference room for community meetings and we should have both

making bracelets

Collaborative art - community art

origami

Tutu and simple costumes for kids

teaching sewing

pottery

local schools could also use

Mask making

often times need resources books etc

Collage - photo collage, mixed media, image transfers

K-12 Science projects

Epoxy art

entrepreneur creation space for jewelry making

pottery wheel

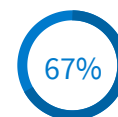
slime

playdough

we also need space to display work

sculpture

Printmaking



Engagement

46

Responses



## Responses

Some activities might need access to a sink, e.g. watercolors....

Cooking classes for kids

Yes. Textile arts.

building

3D printer

lego club

also need a place to safely store the work in progress, not in a storage closet

drawing classes

science club

laser printing

sensory area

Sewing, quilting, crochet, other texting arts. Maybe some painting...

coding group

a place to do science projects

Family crafts

Quilting, knitting,

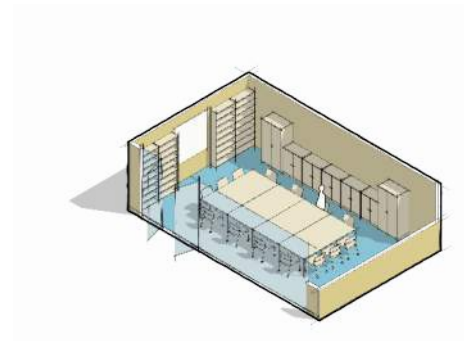
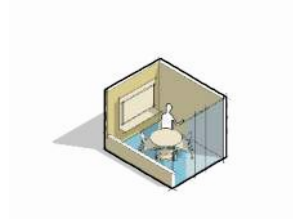
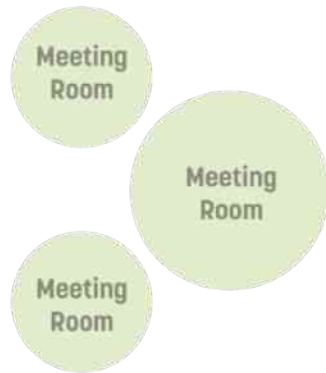
maker space

crotchet with youth group

knitting classes

3d printing

# Space Types Meeting/Study



St. John's Library, Winnipeg, Canada



BPL Central Library, Boston, MA

# What will you use the meeting rooms for?

## What will you use the meeting rooms for?

" Small play groups of just a few parents/ children "

" the citizenship classes were overflowing the current community room space "

" Small group study "

### Responses

Writing group

Mentor visits between a child(ren) and mentor(s)

silent area

interview area

In the large meeting room, our neighborhood association might number 30-40 people.

community advocacy meetings

emotional support group

1:1 reading lessons or 2 or 3 peers reading together

the citizenship classes were overflowing the current community room space

ESL groups of 6-10

30 person community meetings

Small play groups of just a few parents/ children

social skills groups

support groups/meeting for students with disabilities

Community meetings; Civic Academies (Teach the community about resources and etc)

sibling meeting area

ESL groups

Group study rooms.

Social services visits between families

civic organization meetings

Small meetings of neighbors, rather than meeting in someone's home.

neighbors connecting

School field trips

some folks may need that space in order to concentrate as opposed to the larger space



Engagement

37

Responses

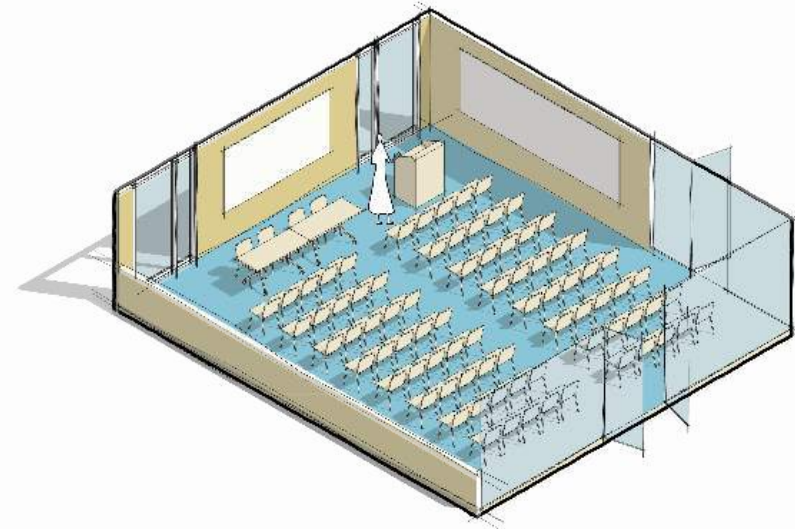
## Responses

esl	magic shows	School gatherings
youth/teen/adult individual study area and individual study area		
Kids birthday parties	tutoring and mentoring	
girl scout group	job interview practicing	
Genealogy club		
volunteer meeting area (SpEdPAC - Boston Special Education Parent Advisory Council ) ~ 8 people		
Book club	Group of 4-6	Small group study

# Space Types Community Room



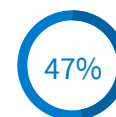
BPL Adams Branch, Boston, MA





# How would you like to use the large Community Room?

## How would you like to use the large Community Room?



Engagement

30

Responses

" Breastfeeding/ new parent support groups "

" School field trips "

" Yoga classes. "

" school groups "

### Responses

Instrument petting zoo

Symphony performances for kids

Universal Design Practices built in considering individuals that are blind, deaf, cognitively impaired etc..

bright and open with the ability to flow out to the green outdoor area for special community events and receptions

Spring break / winter break programs for families - bubble show, magician, puppets, small wild animal encounter, etc

Presumably the large room would still be used as a polling place.

science demonstrations

Voter registration

Voting - elections

game night

Community Vaccinations

School field trips

large with the ability to partition it into two smaller ones!

School performances

Music and other performances

School gatherings and school family meet-ups

Yoga classes

sensory friendly events

Yoga classes.

Kids birthday parties

movie nights!

Variety of support groups

clubs

Breastfeeding/ new parent support groups

neighborhood association meetings

Monthly neighborhood association meetings.  
Candidates nights.

Responses

Cooking class	Play groups of a few families
school groups	neighborhood entertainment

# Outdoor Space



BPL Adams Branch, Boston, MA



Eastie Farm, East Boston, MA



BPL Jamaica Plain Branch, Boston, MA

# Next Steps

Our next community meeting in the fall will explore conceptual test fit options for the library and also explore the possibility of housing.

## Goals of the Study

- Collect information about the Codman Square branch and the community it serves
- Work with the community to establish program and design priorities
- Assess the existing building and site
- Develop a library building program
- **Explore options for renovation, addition, and replacement of the building**
- **Establish building systems and cost parameters for each option**
- **After establishing library needs, determine whether it is possible to add housing to the site while meeting all of the library's needs**
- Provide recommendations to the City for moving forward with the project

# Q&A



# More to say? Couldn't make the meeting?

We want to hear from you!

Please visit

<https://www.bpl.org/codman-square-project/>

and fill out a survey online.

Or, visit the branch to fill out a survey on paper!

## Further Feedback?

Please contact Priscilla Foley, Director of Neighborhood Services, Boston Public Library

[pfoley@bpl.org](mailto:pfoley@bpl.org)

