



SOUTH END BRANCH LIBRARY

Community Meeting #1

January 8, 2023



Mayor Michelle Wu



utile

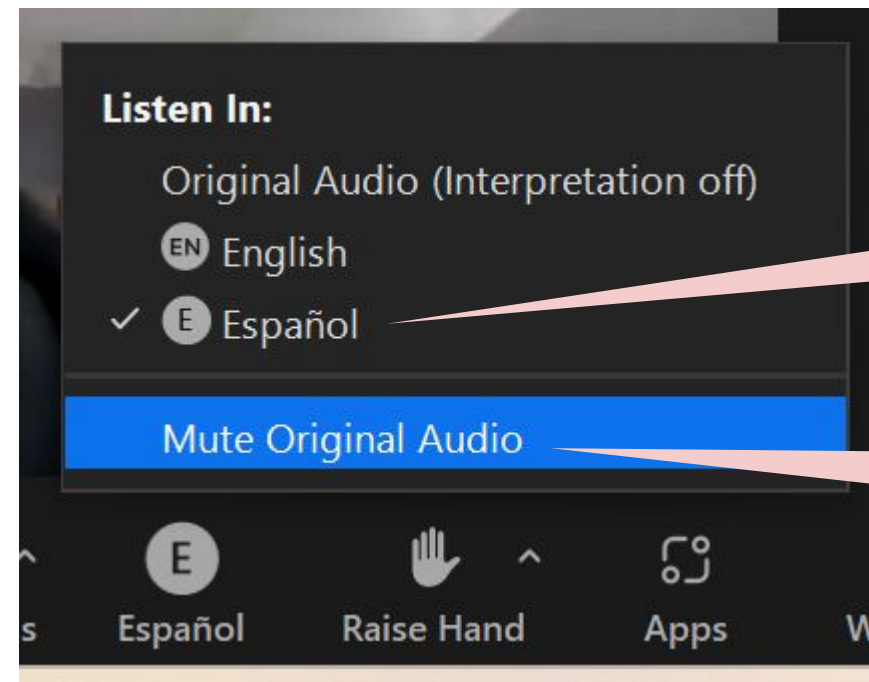


City of Boston
Public Facilities

TRANSLATIONS

Translations for this meeting are available live in the following languages:

Chinese (Cantonese)
Spanish (Español)



Select the language you would like to hear the presentation in

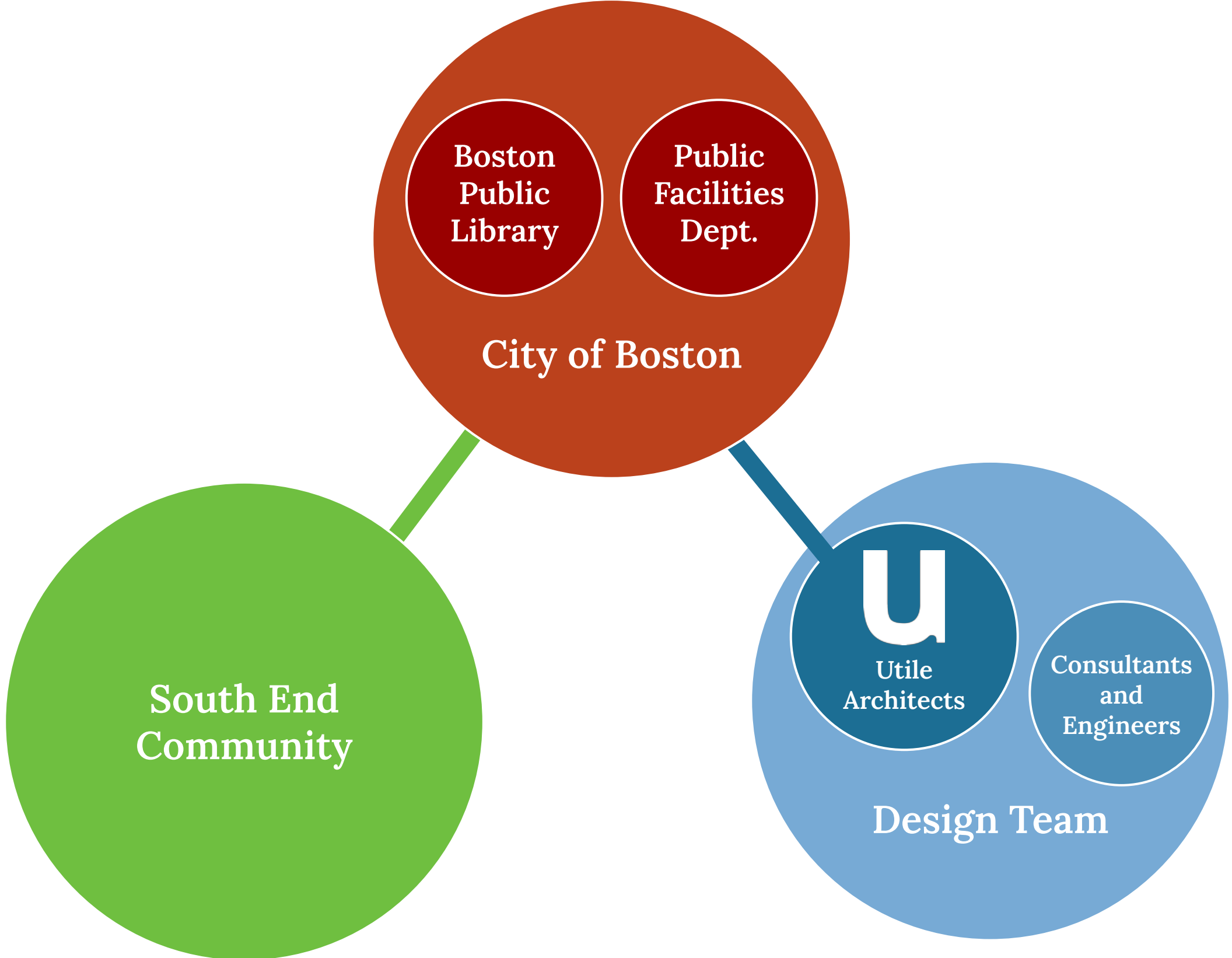
Select mute original audio to only hear your selected language channel

AGENDA

Community Meeting #1
January 8, 2023

1. Introductions
2. Schedule and Process
3. Branch Service Area
4. Existing Conditions & A Brief History of the Branch
5. Building Program
6. Site Observations
7. Next Steps
8. Q&A Discussion

PROJECT TEAM



ACCELERATED PROJECT SCHEDULE



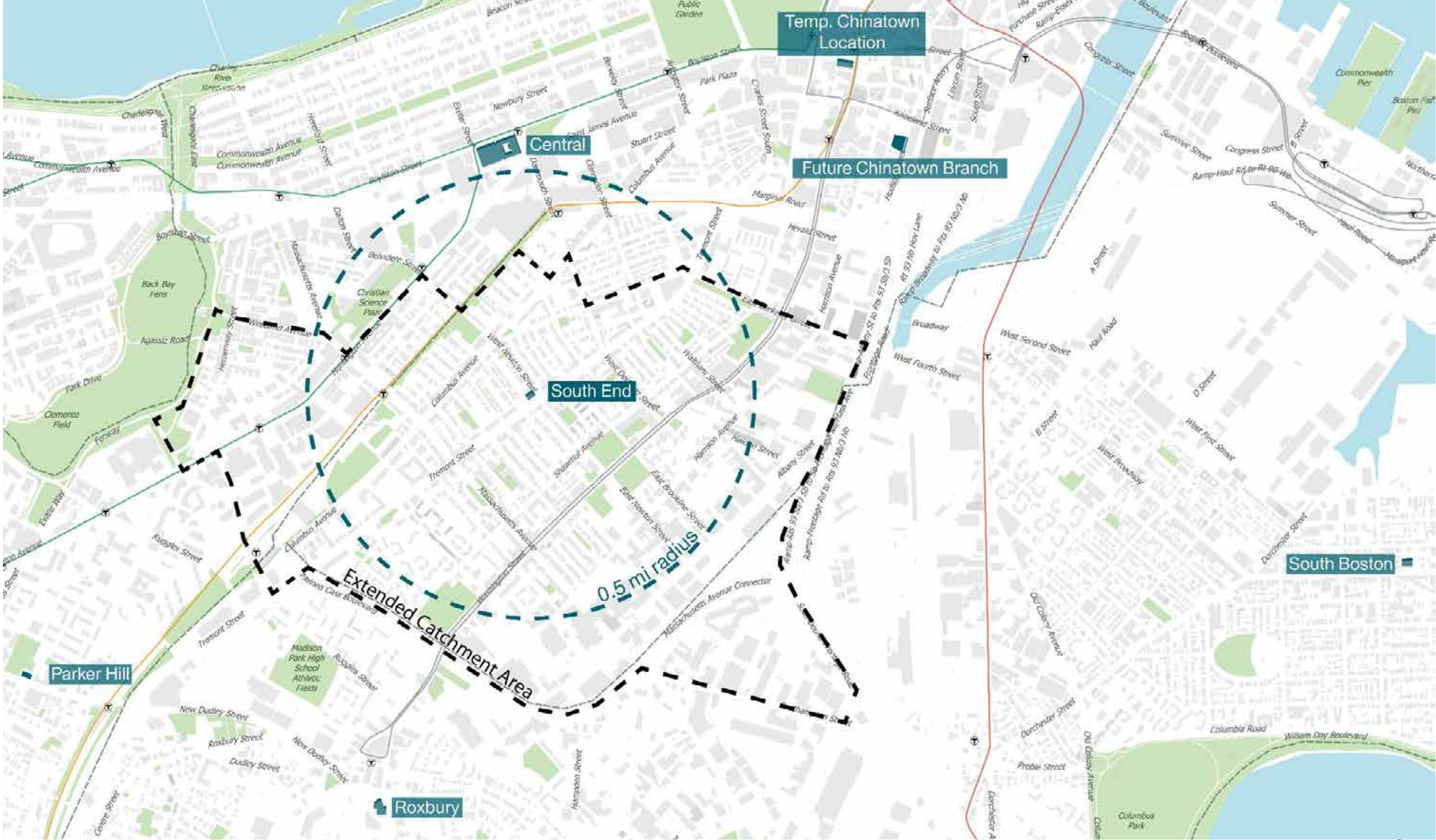
Community Input

- Community Meeting #1
Jan 8, 2024
- Community Meeting #2
Feb 2024
- Community Meeting #3
Mar / Apr 2024
- Future Community Meeting
TBD in 2024
- Future Community Meeting
TBD in 2024

BRANCH SERVICE AREA



BRANCH SERVICE AREA



EXISTING CONDITIONS & A BRIEF HISTORY OF THE BRANCH



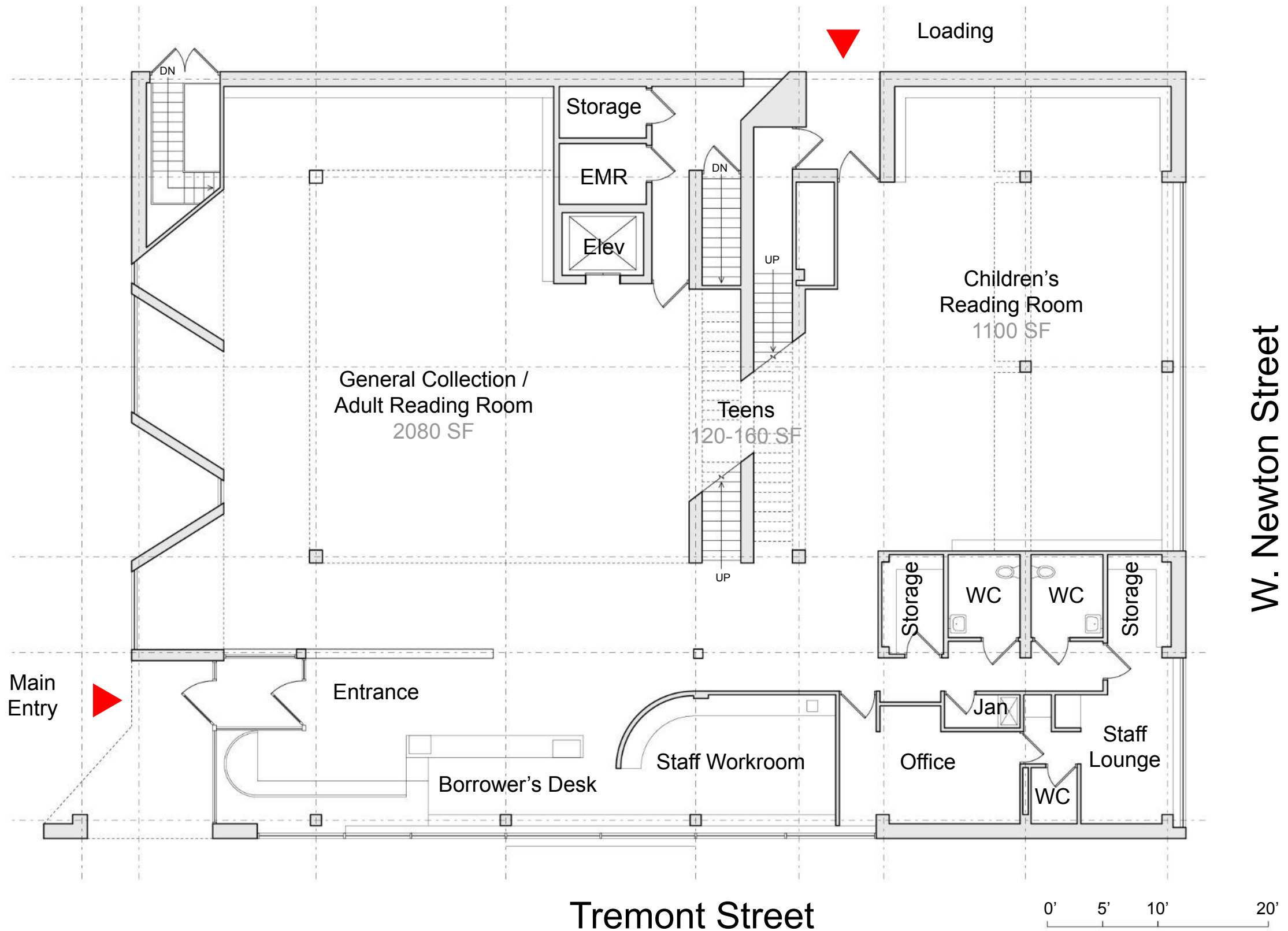
SOUTH END BRANCH - GROUND FLOOR

Ground Floor - 6,400 SF

Second Floor - 1,500 SF

Basement - 1,500 SF

Total GSF: 9,400 SF



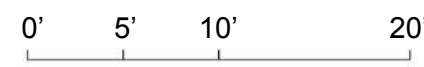
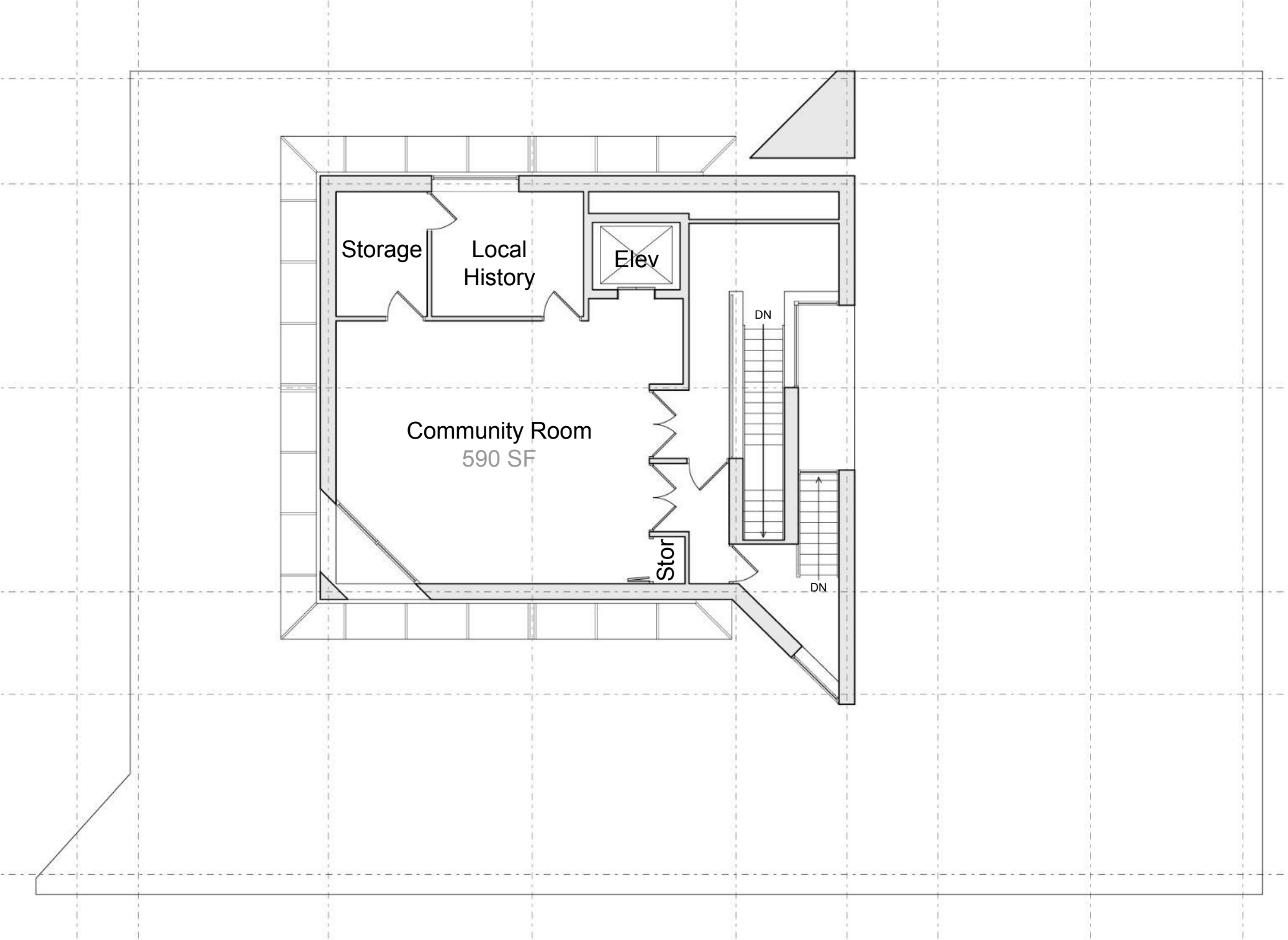
SOUTH END BRANCH - GROUND FLOOR



SOUTH END BRANCH - SECOND FLOOR

Ground Floor - 6,400 SF
Second Floor - 1,500 SF
Basement - 1,500 SF

Total GSF: 9,400 SF



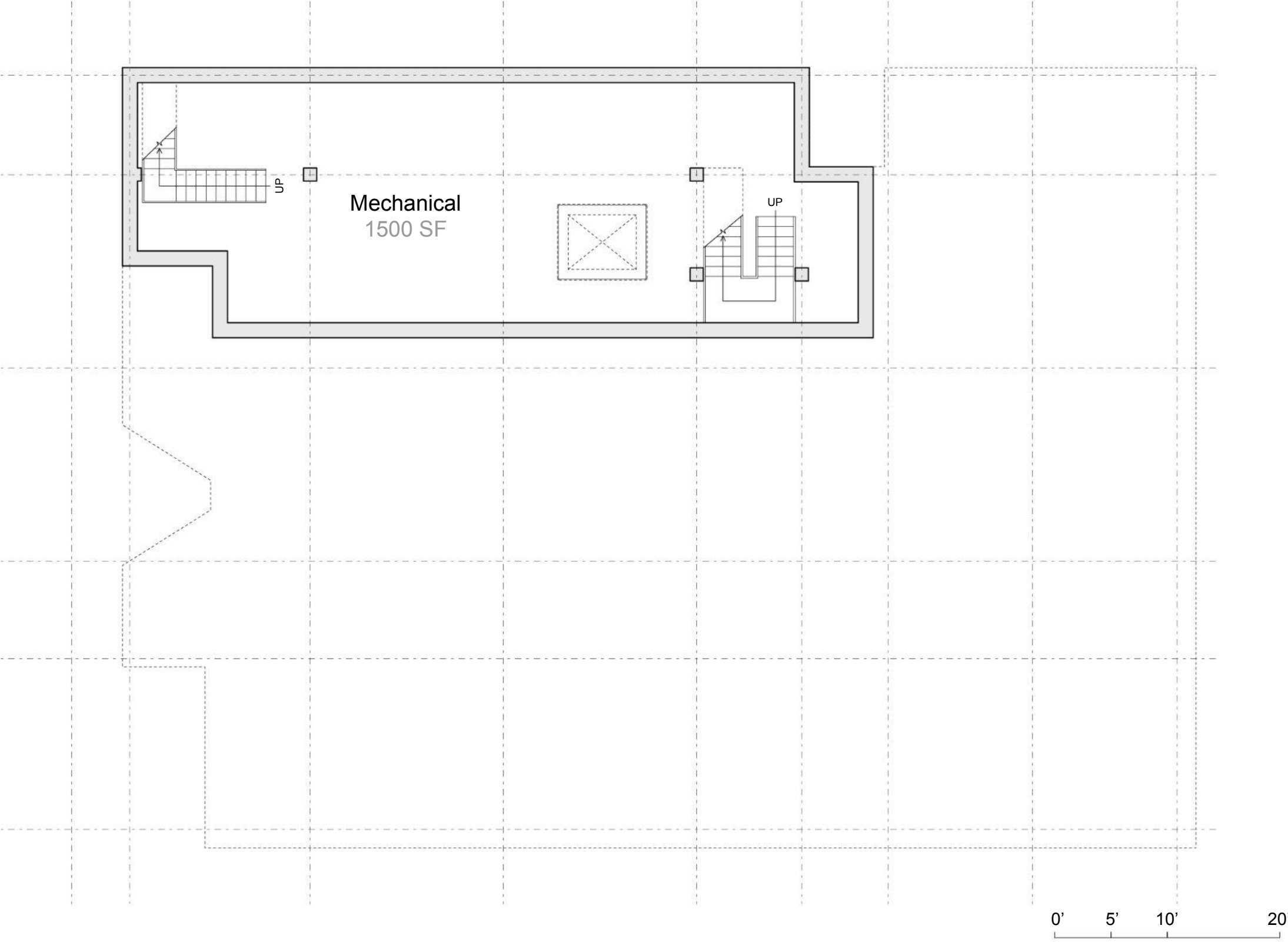
SOUTH END BRANCH - SECOND FLOOR



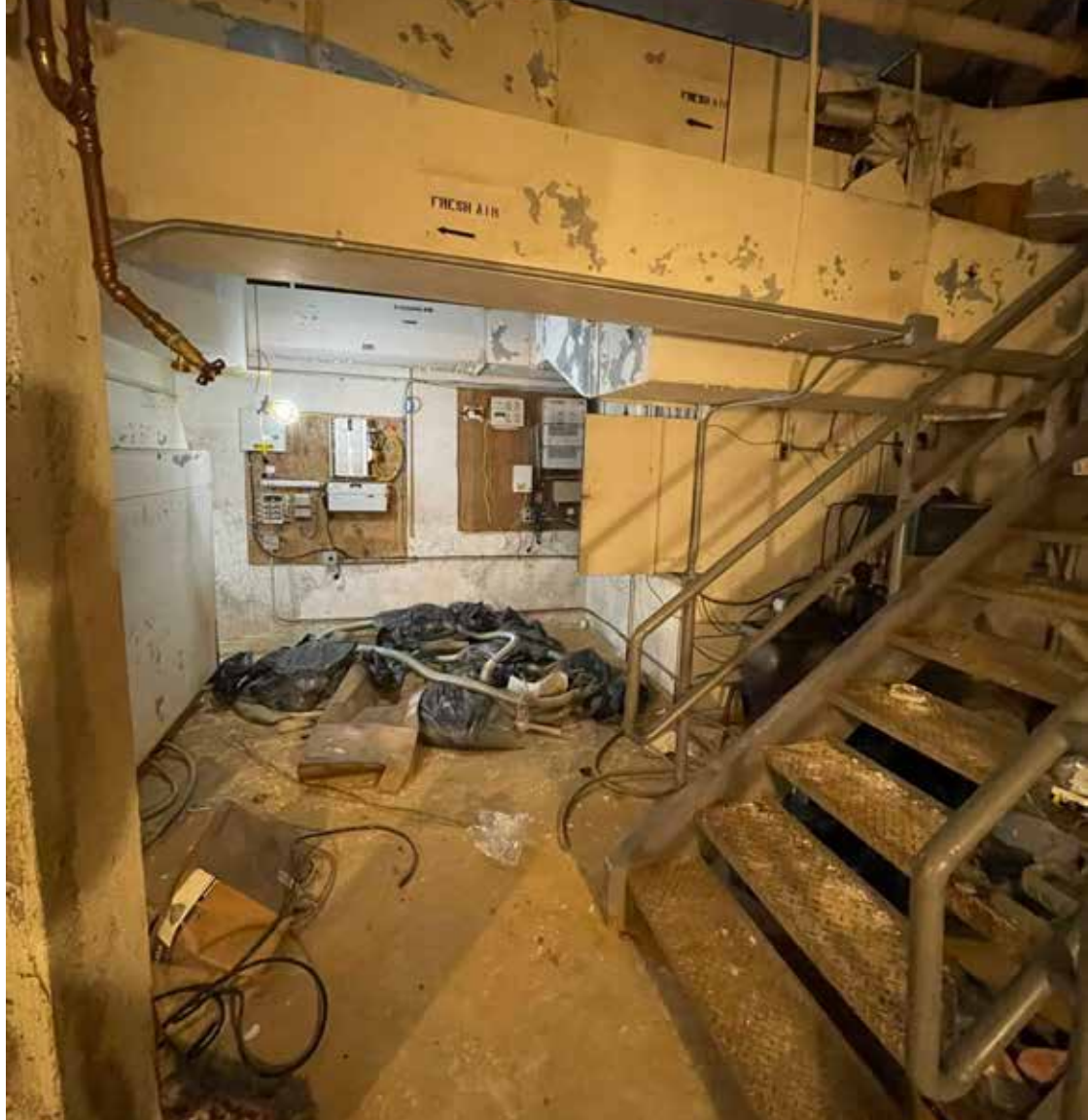
SOUTH END BRANCH - BASEMENT

Ground Floor - 6,400 SF
Second Floor - 1,500 SF
Basement - 1,500 SF

Total GSF: 9,400 SF



SOUTH END BRANCH - BASEMENT



SOUTH END BRANCH LIBRARY HISTORY



1877

Library created at the current site in the basement of the Mercantile Library Association Building, from a gift of 18,000 books from the Association.

[Image: BPL Atlascope](#)



1879

Branch moves to the English High School at Warren/Montgomery & Dartmouth (demolished, now McKinley Elementary).

[Image: King's Handbook of Boston, 4th ed. 1881](#)



1904

Branch moves to The Every Day Church at 397 Shawmut Avenue (demolished, now Villa Victoria).

[Image: Hawes, Josiah Johnson, 1808-1901](#)



1923

Branch moves again to the John J. Williams Municipal Building at Shawmut Avenue and West Brookline Street (now Blackstone Community Center and Auditorium).

Image: Cyrus Dahmubed/Utile



1971

Branch returns home to its first location in a new building designed by Romaldo Giurgola, in part as a result of Urban Renewal-era planning and demolition.

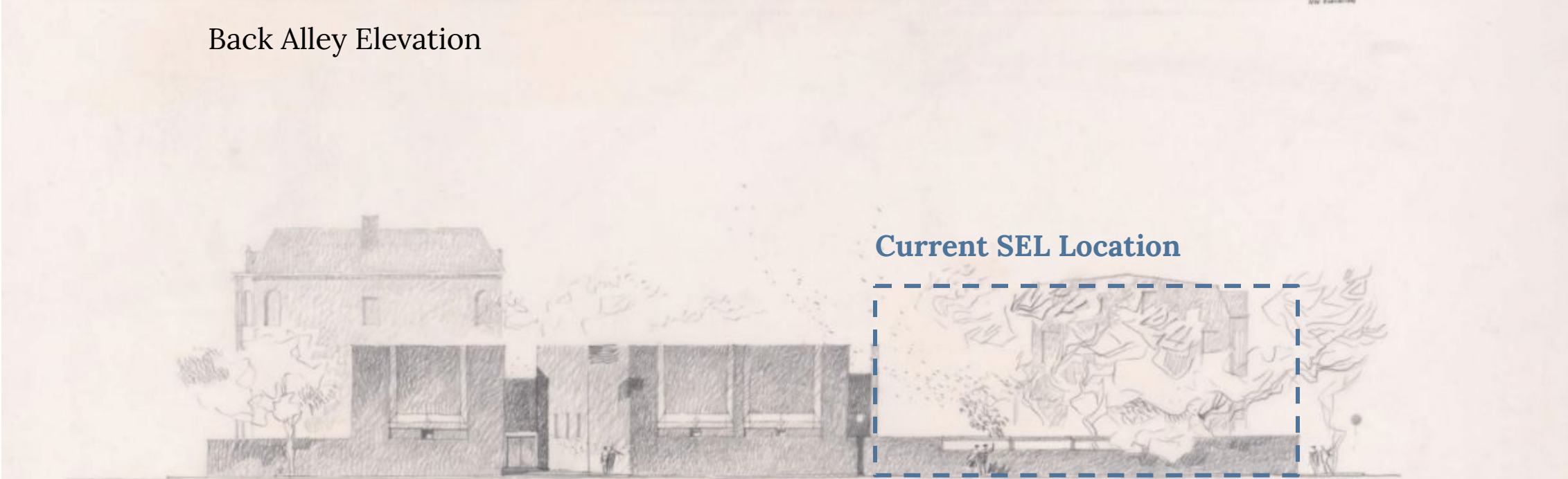
The finished building differs significantly and is smaller than the original proposal.

[Image: Bill McQueen](#)

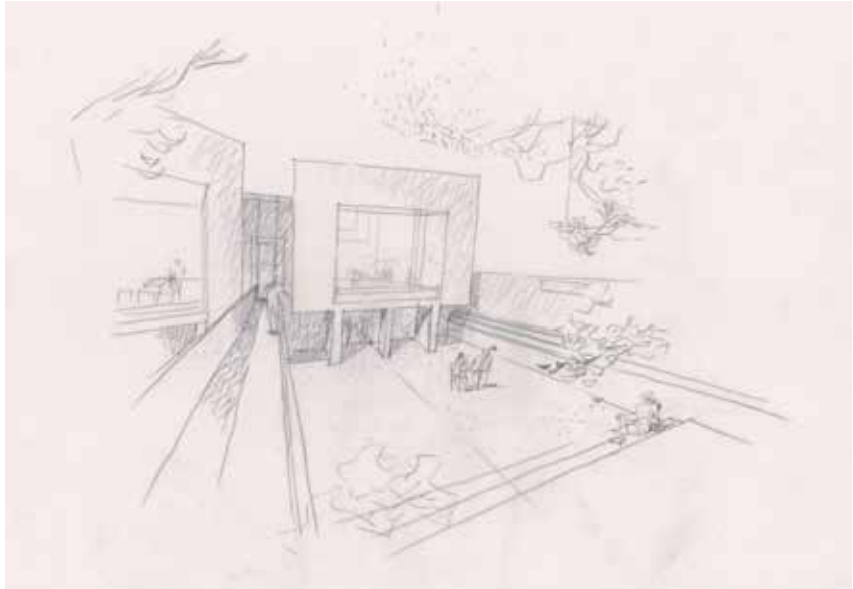
BOLD ASPIRATIONS



Back Alley Elevation



Tremont Street Elevation

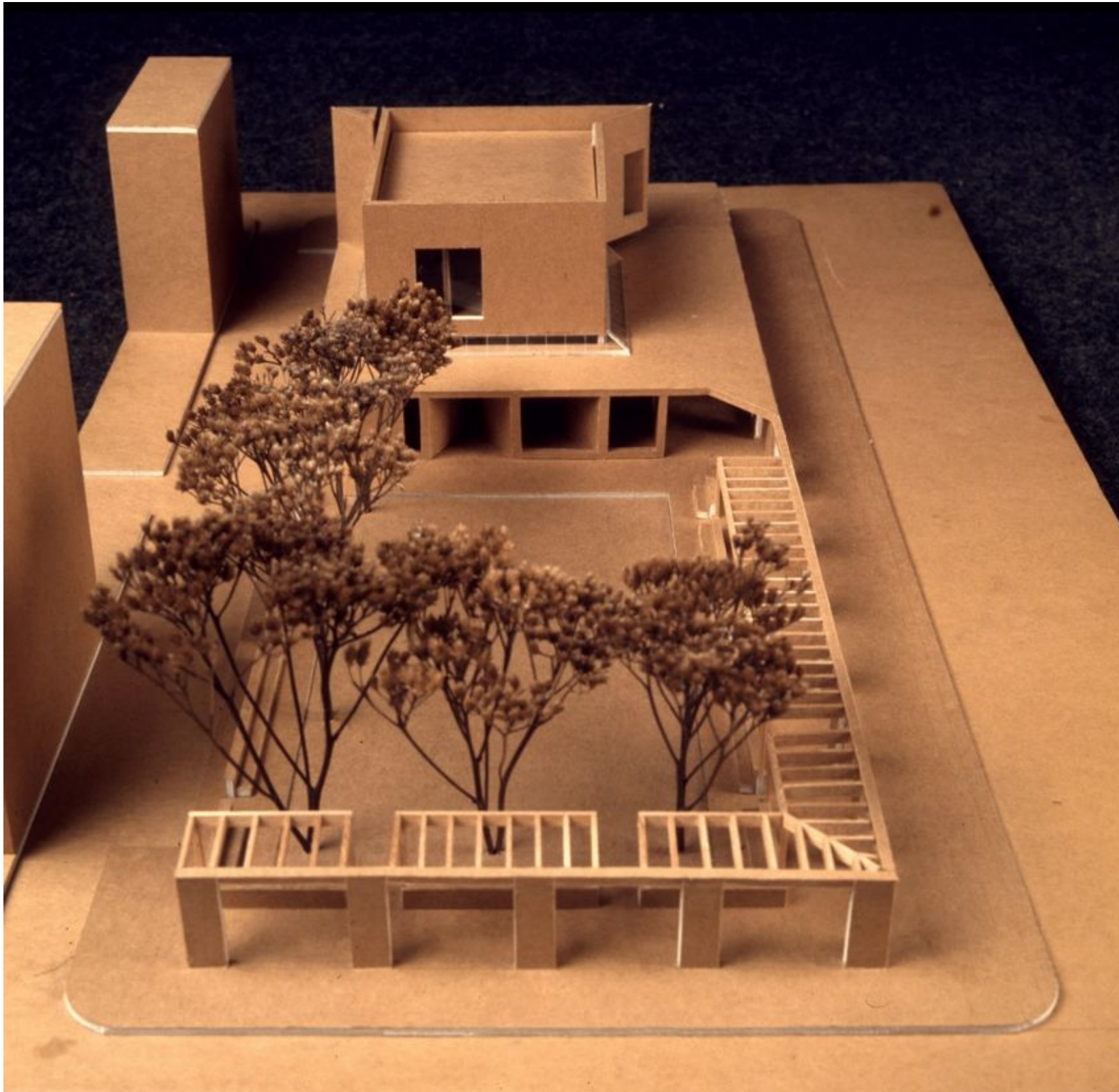


1967: An early iteration proposed a larger building on the southwest end of the parcel. Two reading rooms were to look out over a sunken garden adjacent to the children's area, with bridges and ramps connecting it to the street level.

[Source: Dan Kelley Lecture to FOSEL, 3/16/2019](#)



THE FINAL DESIGN



1970-71: The building as ultimately designed faced issues from its early days. The canopied garden wall collapsed after a short period of time due to deficient site preparation, which also caused issues in the garden.

A 1990 redesign of the Library Park added the existing wrought iron fence.

[Source: Dan Kelley Lecture to FOSEL, 3/16/2019](#)



BUILDING PROGRAM



RECENTLY RENOVATED / BUILT BRANCH COMPARISON



(Existing)
South End Branch
Total: 9,400 SF



Faneuil Branch
Total: 11,700 SF



Roslindale Branch
Total: 15,140 SF



Adams Branch
Total: 13,300 SF

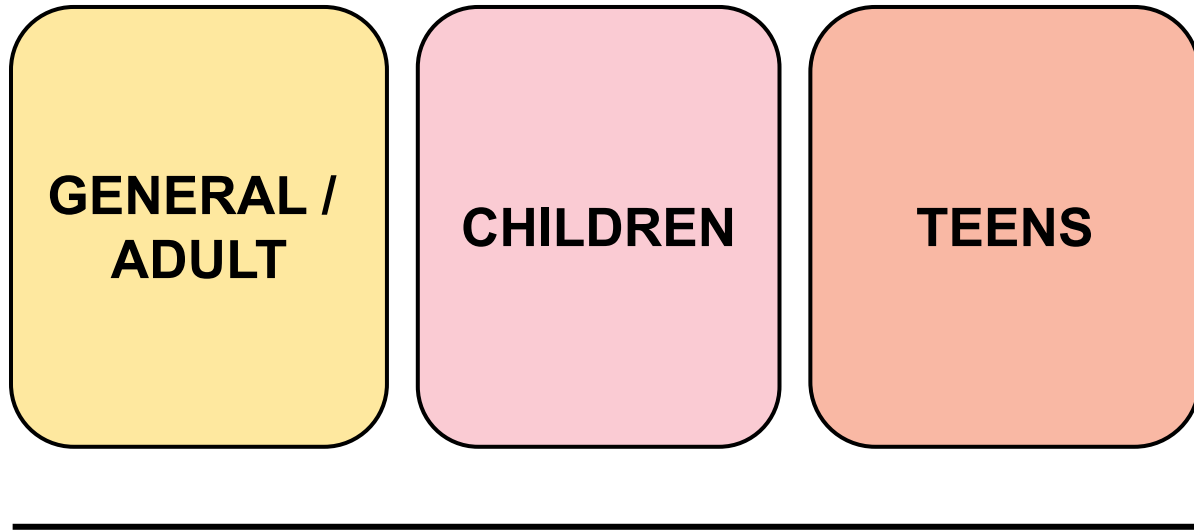


Roxbury Branch
Total: 27,710 SF

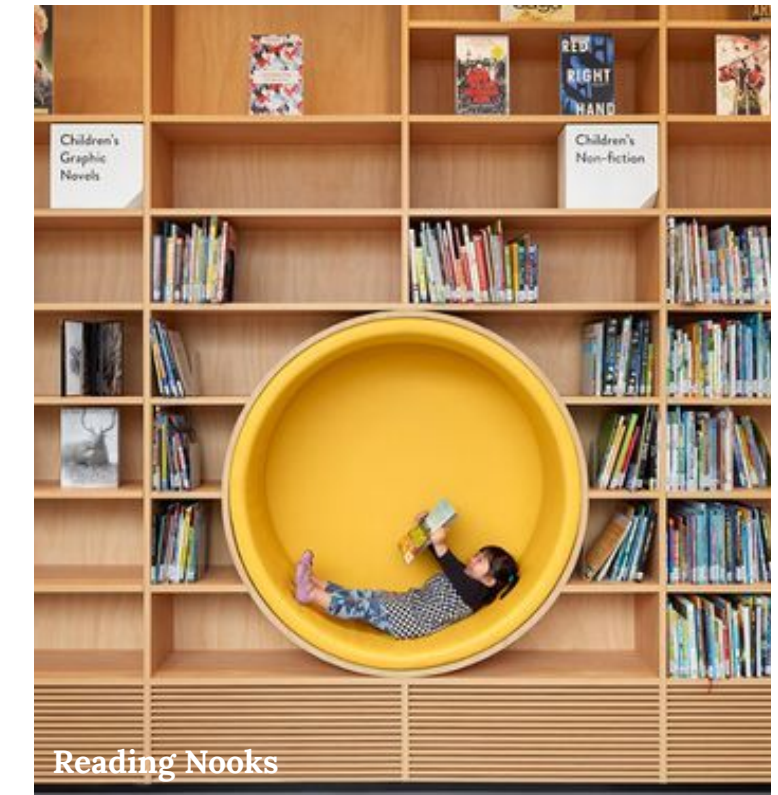


JP Branch
Total: 12,500 SF

CORE BRANCH LIBRARY BUILDING PROGRAM



Collections & Seating



CORE BRANCH LIBRARY BUILDING PROGRAM

COMMUNITY ROOM

100-150 SEATS

STUDY ROOMS

1 OR 2 FOUR-PERSON ROOMS

Meeting and Study Spaces



Study Nooks



Group Work / Study Areas



Adams Branch - Community Room



Meeting Room / Classroom



Study Room

CORE BRANCH LIBRARY BUILDING PROGRAM

LOCAL HISTORY

TEACHING LAB / CLASSROOM

PROGRAM UNIQUE TO BRANCH

Spaces Unique to the Neighborhood



WE WANT TO HEAR YOUR THOUGHTS!



Art Studio



Remote Working / Phone Rooms



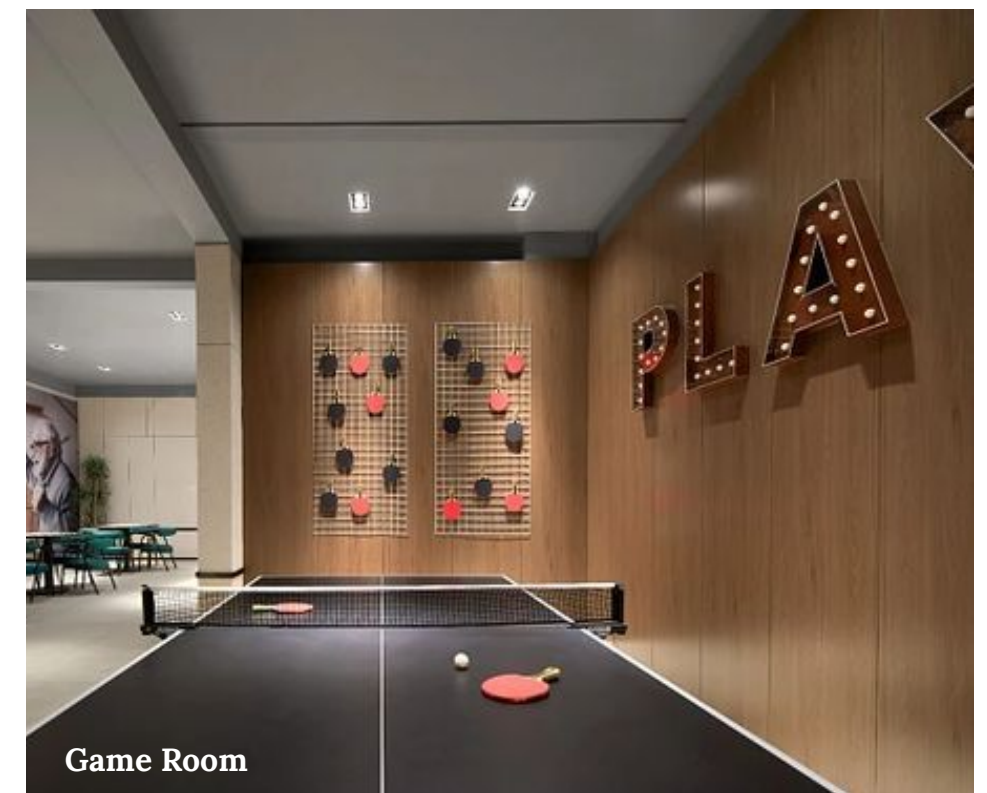
Roxbury Branch - African American Collection



Music Room



Maker Space / Craft Room



Game Room

CORE BRANCH LIBRARY BUILDING PROGRAM

Outdoor Spaces



Locations for Art



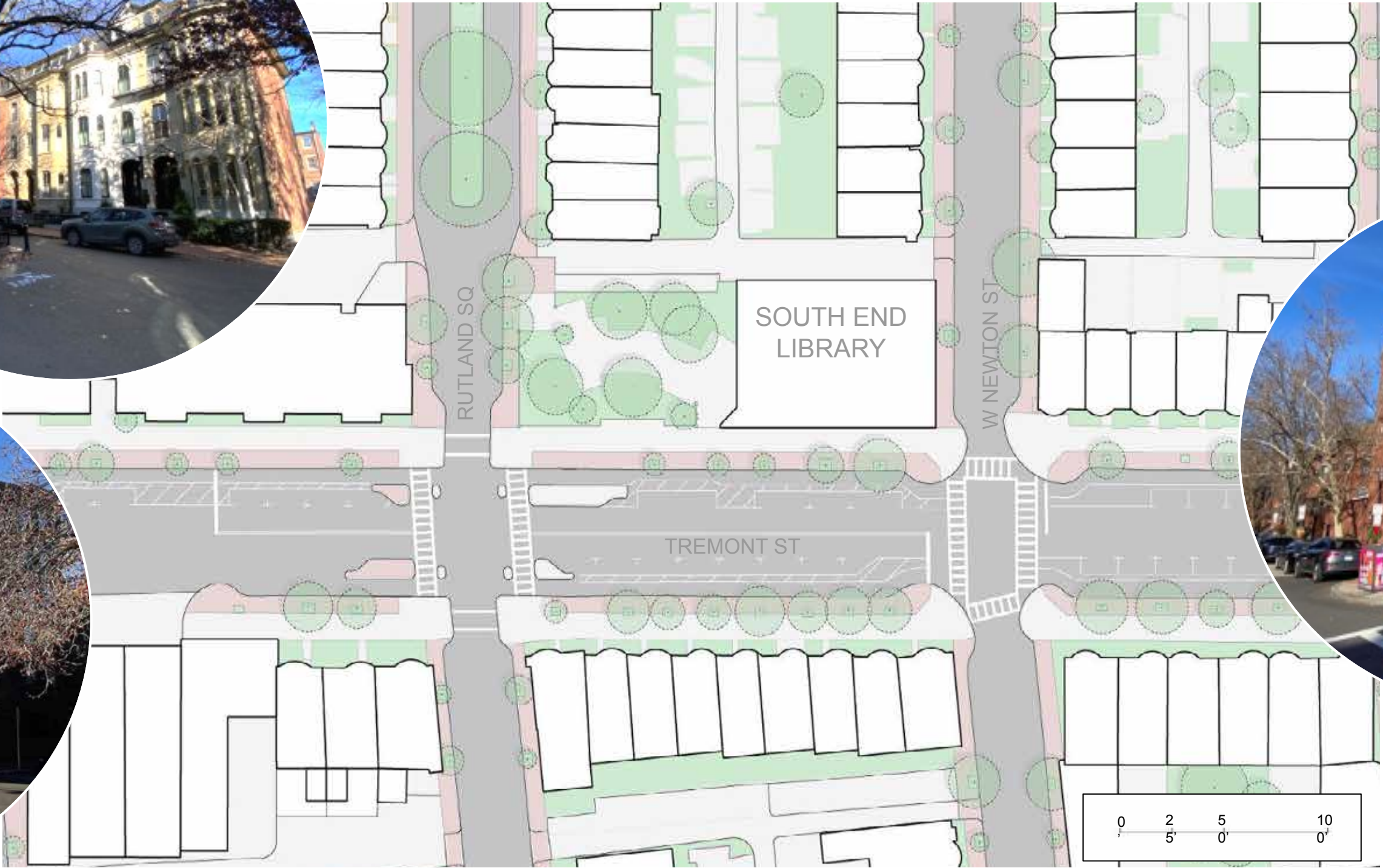
SITE OBSERVATIONS



SITE PLAN



EXTERIOR CONTEXT



NEXT STEPS



COMMUNITY INPUT

We are here



Community Meeting #1
 Jan 8, 2024
 Preliminary existing conditions report
 Present typical BPL Branch Library building program
 Understand community needs for South End Branch

Community Meeting #2
 Feb 2024
 Update on existing conditions findings
 Develop preliminary South End Branch building program
 Present preliminary test-fits of program in renovation and new construction options

Community Meeting #3
 Mar / Apr 2024
 Finalize Branch building program
 Update test-fits in renovation and new construction options
 Present recommendation of option for further design

Future Community Meetings
 TBD in 2024

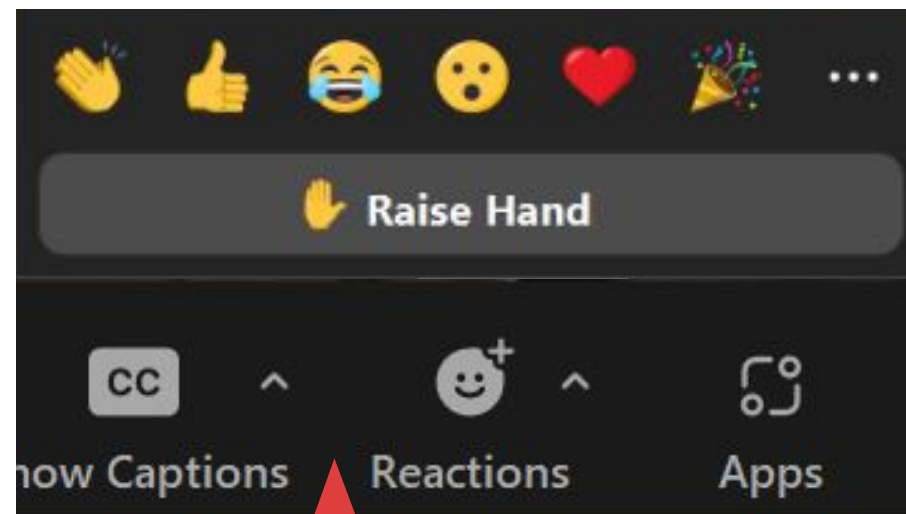
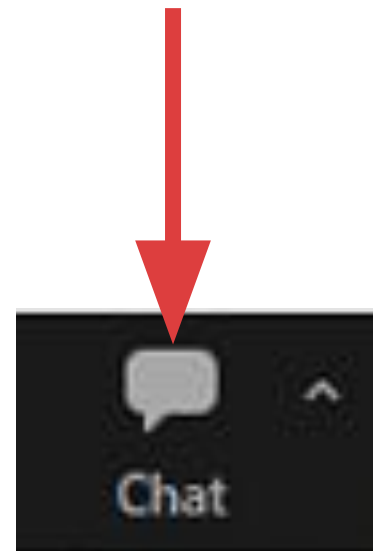
Future Community Meetings
 TBD in 2024

QUESTIONS & COMMENTS?



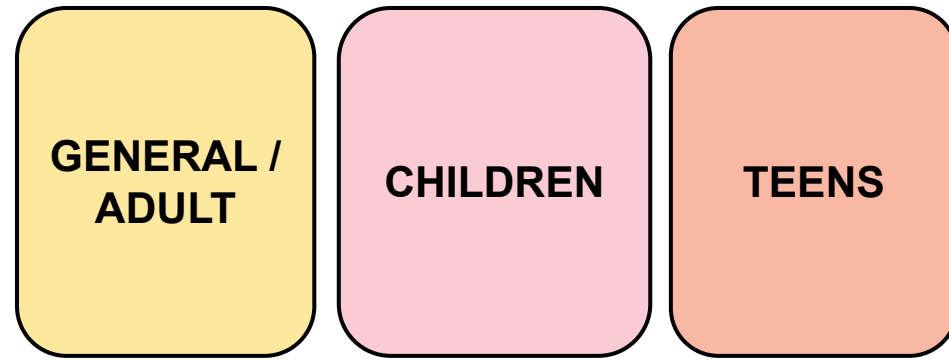
QUESTIONS & COMMENTS

For written comments or questions:
Use the chat dialog box

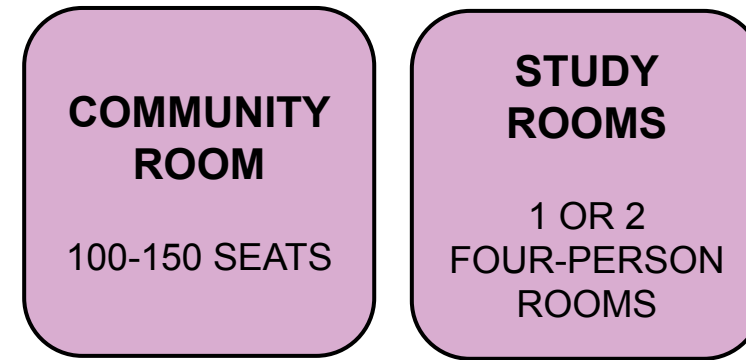


To ask a question:
Raise hand and wait to be called on

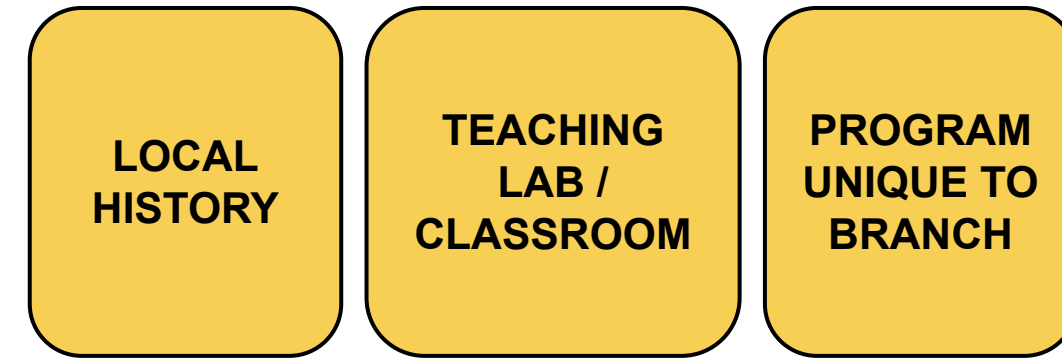
QUESTIONS & COMMENTS



Collections & Seating



Meeting and Study Spaces



Spaces Unique to the Neighborhood



1. How do you use these spaces now? What improvements can be made?
2. What unique library program or space can best support the needs of the South End community?
3. What spaces are missing from the core program?
4. How important is open space to the overall library experience?
5. How important is the Library Park to the character of the neighborhood?

QUESTIONS & COMMENTS

The screenshot shows the Boston Public Library website. At the top, there is a navigation bar with links for 'Hours & Locations', 'Help', and 'Log In / My BPL'. Below this is the BPL logo and a search bar. A red navigation bar contains links for 'About', 'Visit', 'Books & More', 'Services', 'Learning & Research', 'Events', 'Support the BPL', and 'Work at the BPL'. The main content area is titled 'South End Branch Project' and has two tabs: 'Hours & Location' and 'About the South End Branch'. Below the tabs is a section for 'Branch Improvement Feedback' with a sub-header 'Branch Improvement Feedback' and a note: 'We look forward to your feedback and will be glad to answer any questions you may have. * indicates required fields'. The form includes fields for 'Name' (split into 'First' and 'Last'), 'Email', and a 'Feedback' text area. A red arrow points to the 'Feedback' text area.

Written comments or questions can also be directed to:

Priscilla Foley

Director of Neighborhood Services

617-859-2233

pfoley@bpl.org

Feedback can be issued through the project page:

<https://www.bpl.org/south-end-project/>

THANK YOU!

