



# CHINATOWN BRANCH LIBRARY

*Community Meeting #2*

March 26, 2025



Mayor Michelle Wu



utile



City of Boston  
Public Facilities



# AGENDA

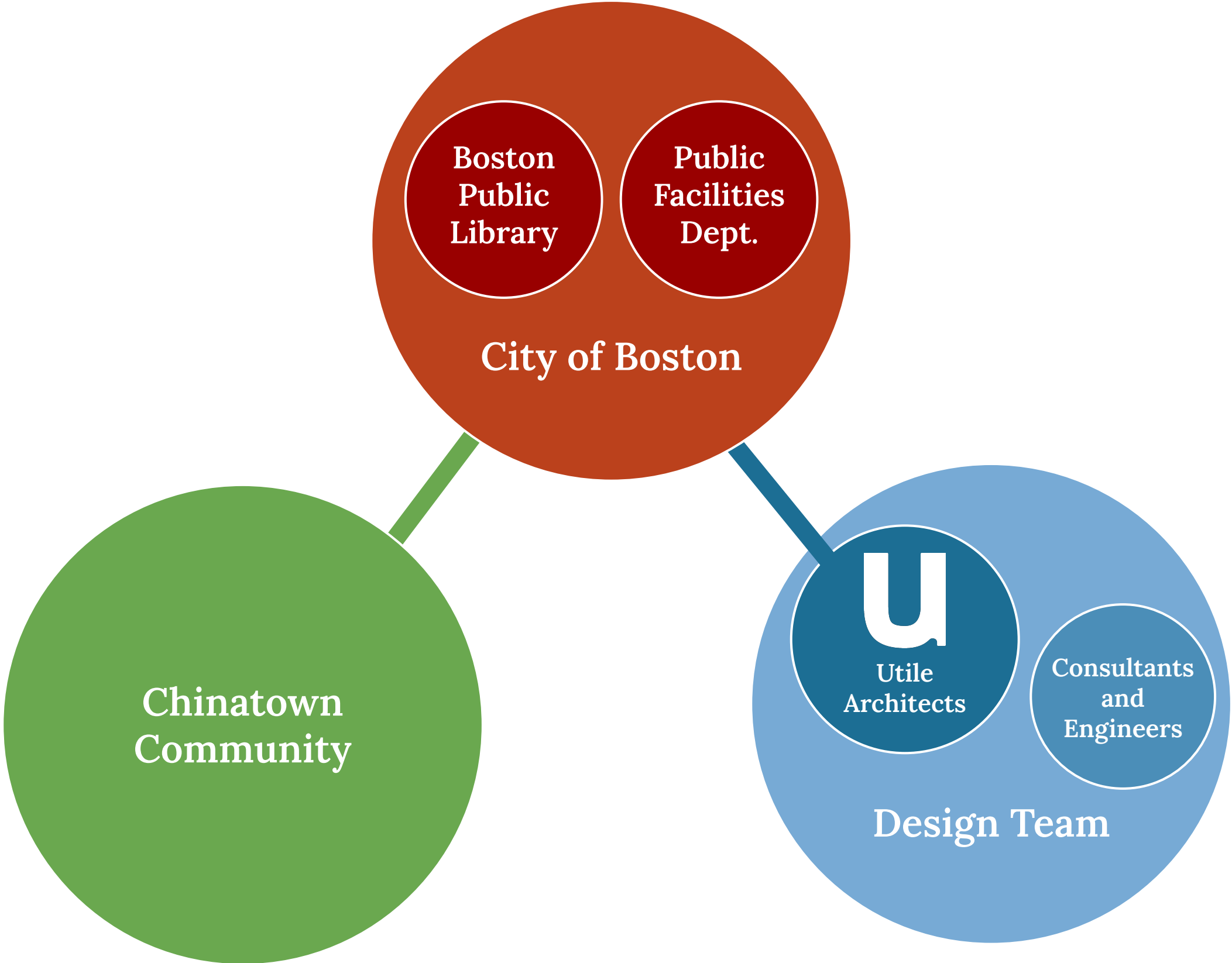
---

Community Meeting #2  
March 26, 2025

1. Introductions
2. Presentation
  - a. Design Update
3. Intergenerational Space Workshop

# PROJECT TEAM

---

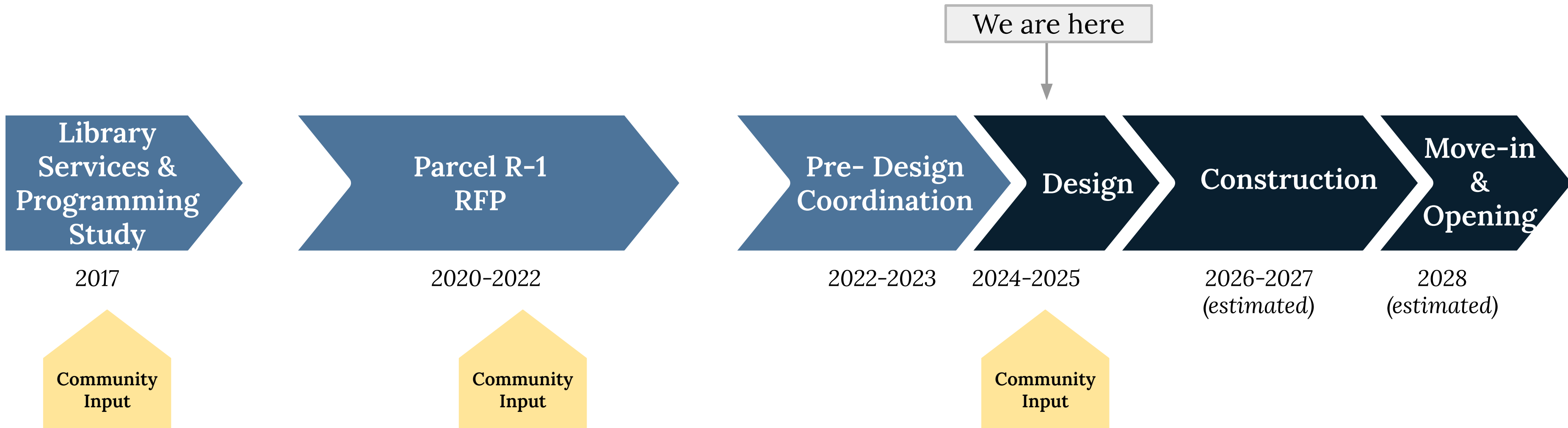


# SCHEDULE & PROCESS





# PROJECT PROCESS



# CHINATOWN BRANCH LIBRARY SERVICES STUDY

---

*Excerpt from BPL & Miller Dyer Spears 12/29/2017 Final Report*

- **REFLECT AND REINFORCE CHINATOWN CULTURE**

- Reflect and help preserve Chinese language, culture, and identity.
- Build a significant Chinese language collection that will be based in this branch and available to the entire city.
- Accommodate presentation of Chinese culture such as music, reading by Chinese authors, and art exhibits.

- **PROVIDE A MULTIGENERATIONAL GATHERING SPACE**

- Community members feel that one of the most important functions of a Chinatown branch library is as a community gathering space.
- Provide informal hang-out space, multi-purpose meeting/conference space for larger gatherings, small conference rooms, small group study rooms, and outdoor space.

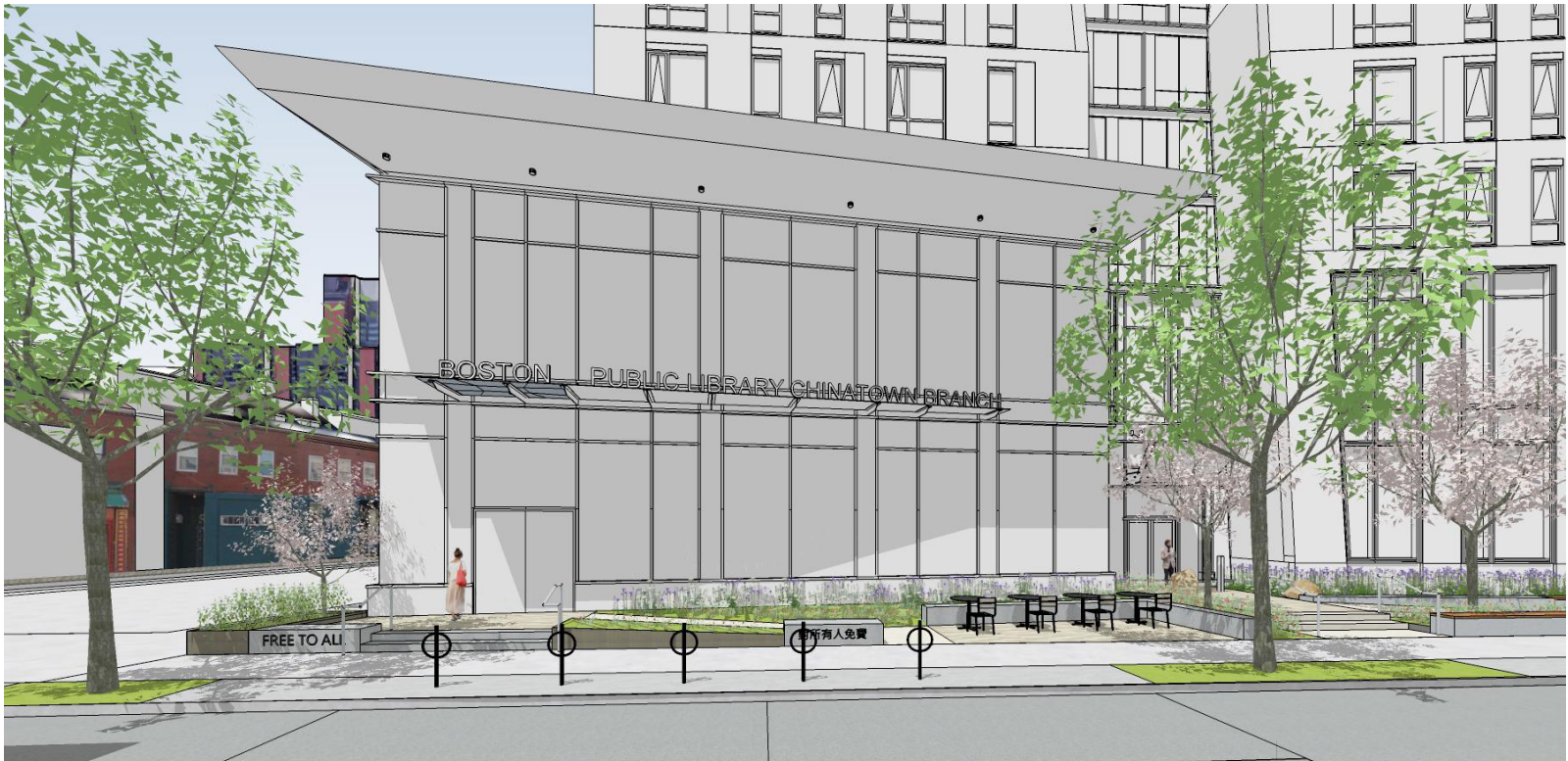
- **PROVIDE SERVICES TO SUPPORT COMMUNITY NEEDS**

- Provide space for educational programs, youth and family programs, and technology resources.



# BRANCH LOCATION

Asian Community Development Corporation Parcel R-1 Design



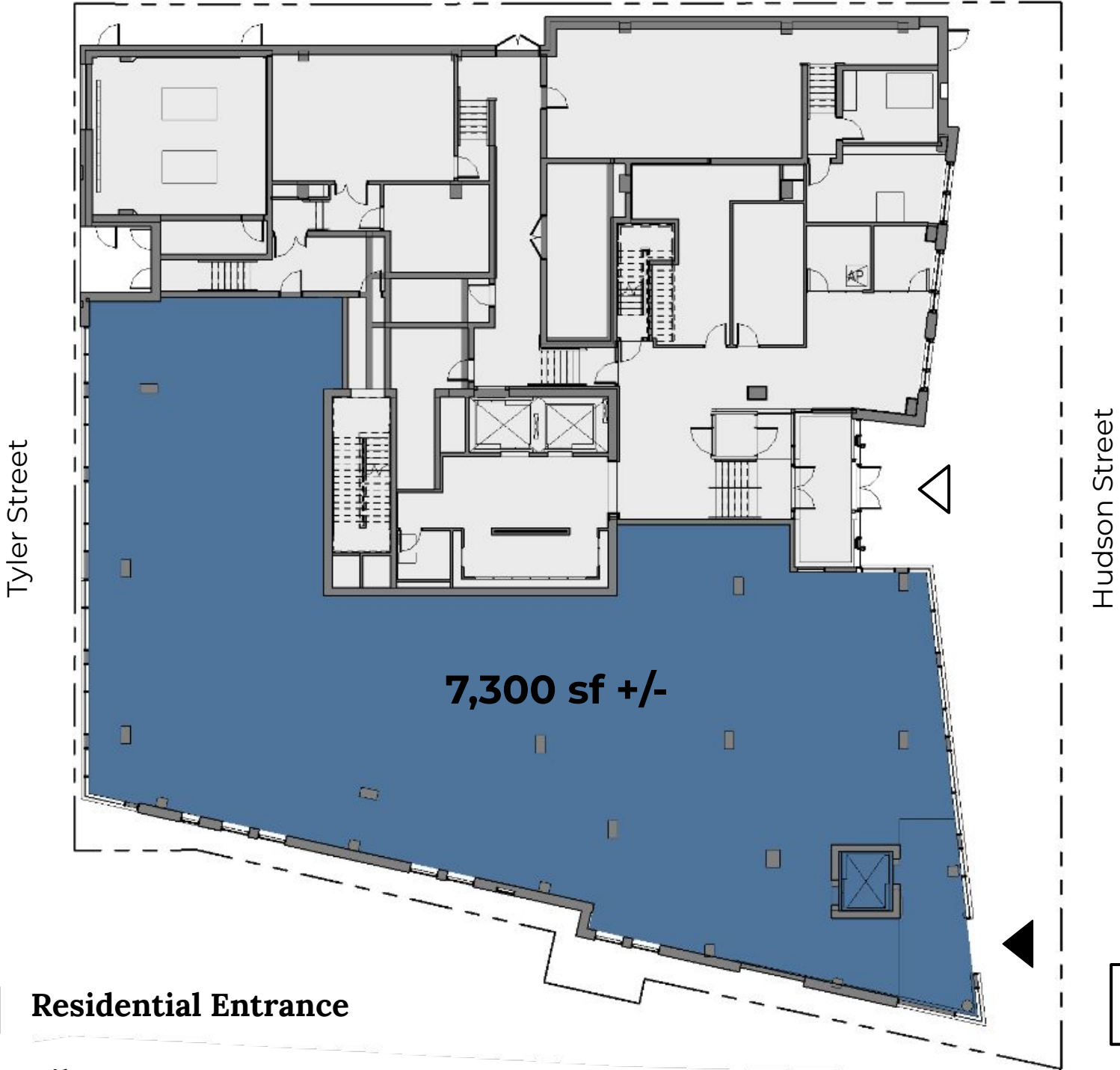
- ◁ Residential Entrance
- ◀ Library Entrance



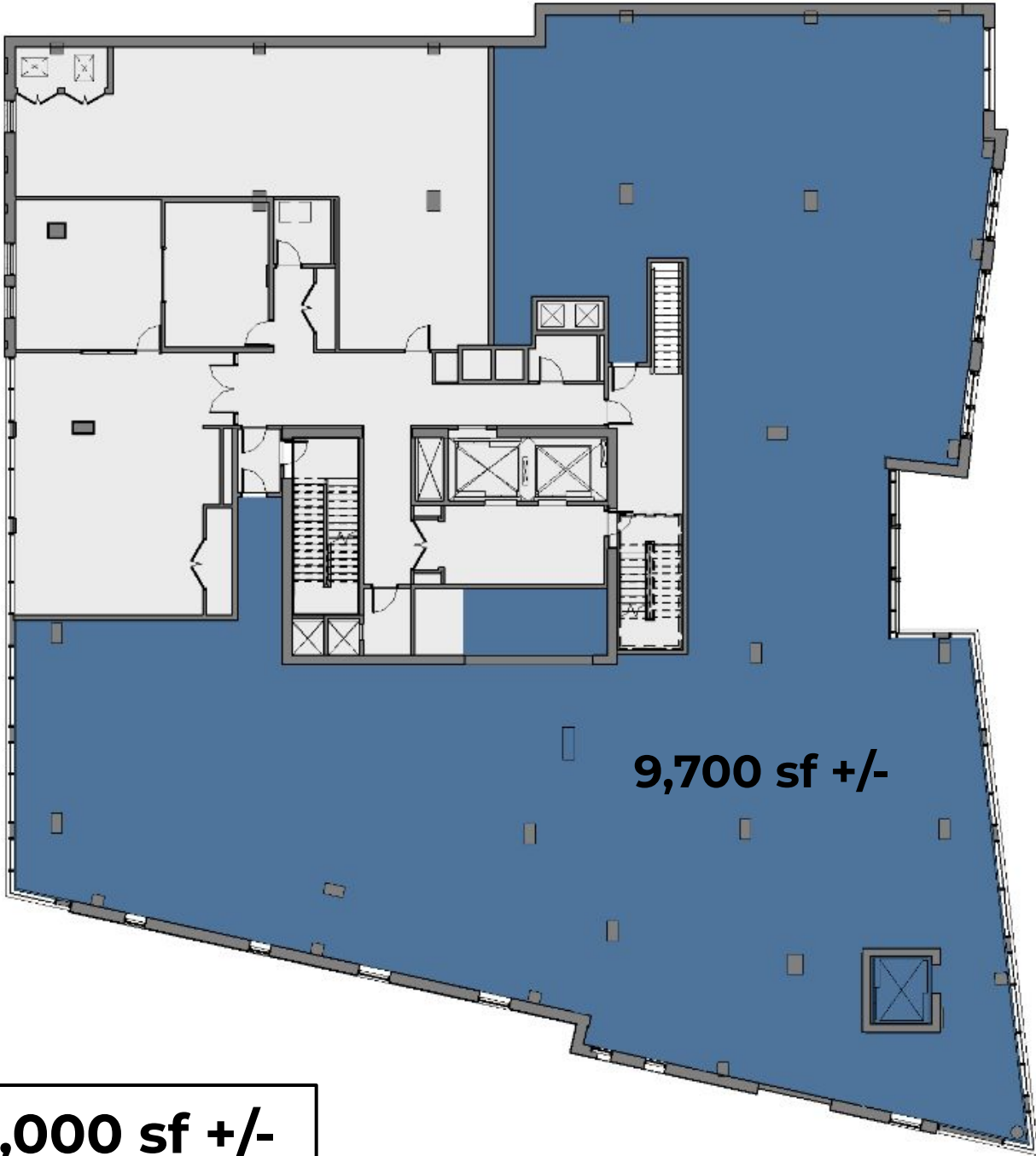
# BRANCH LOCATION

Asian Community Development Corporation Parcel R-1 Design

Ground Floor



Second Floor



**Total: 17,000 sf +/-**



# WHAT WE HEARD

---

*Community Meeting #1 - December 2, 2024*

- Look for ways to recognize the community involvement that led to the new branch
- Library should be safe and welcoming
- Interest in displaying art and artifacts
- Desire for the Library Commons to encourage intergenerational interaction
  - Tai chi
  - Space for food (BPL responded they have limited capacity for this)
- Request for more example of multi-generational spaces

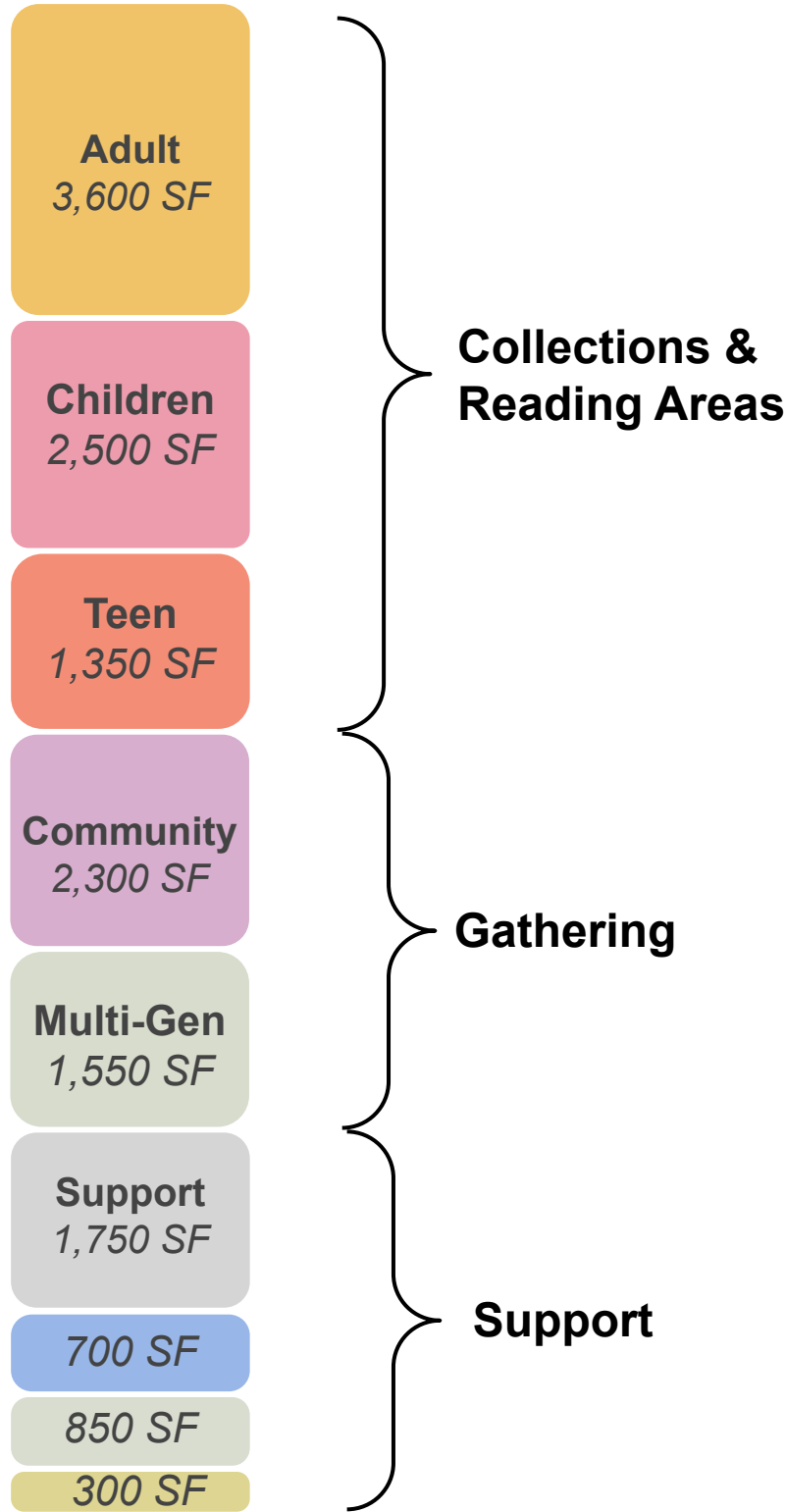
# BUILDING PROGRAM





# PROPOSED CHINATOWN BRANCH BUILDING PROGRAM

14,900 SF (+14 Other%)



Proposed

## Community - 2,300 SF

- Community Meeting Room, seating capacity of +/- 100
- Classroom, seating capacity of +/- 18
- Multi-purpose meeting room, 8-10 seats
- Study room, 4-6 seats

## Adult Area - 3,600 SF

- 12,500 - 13,000 volumes
- 44 seats (66% increase)
- 8 computer stations
- Includes Local History

## Teen Area - 1,350 SF

- 3,000 volumes
- 30 seats (400% increase)
- 6 computer stations

## Children Area - 2,500 SF

- 13,250 - 13,750 volumes
- 32 seats
- 8 AWE computer stations
- Includes tweens area, story time area and crafts

## Multi-Generational Space - 1,550 SF

- Library Commons

## Staff - 700 SF

- Work room, break room, staff restroom and storage
- Branch librarian's office

## Central Services - 850 SF

- Borrower's desk
- Holds shelving, Friend's book sale, community bulletin board and display areas
- Restrooms

## Entry - 300 SF

- Vestibule, lobby and book drop

## Support - 1,750 SF

- Friend's storage
- Facilities storage
- Mechanical and electrical rooms

## Other - 2,100 SF

- Corridors between program areas and HVAC shaft spaces

TOTAL - 17,000 SF

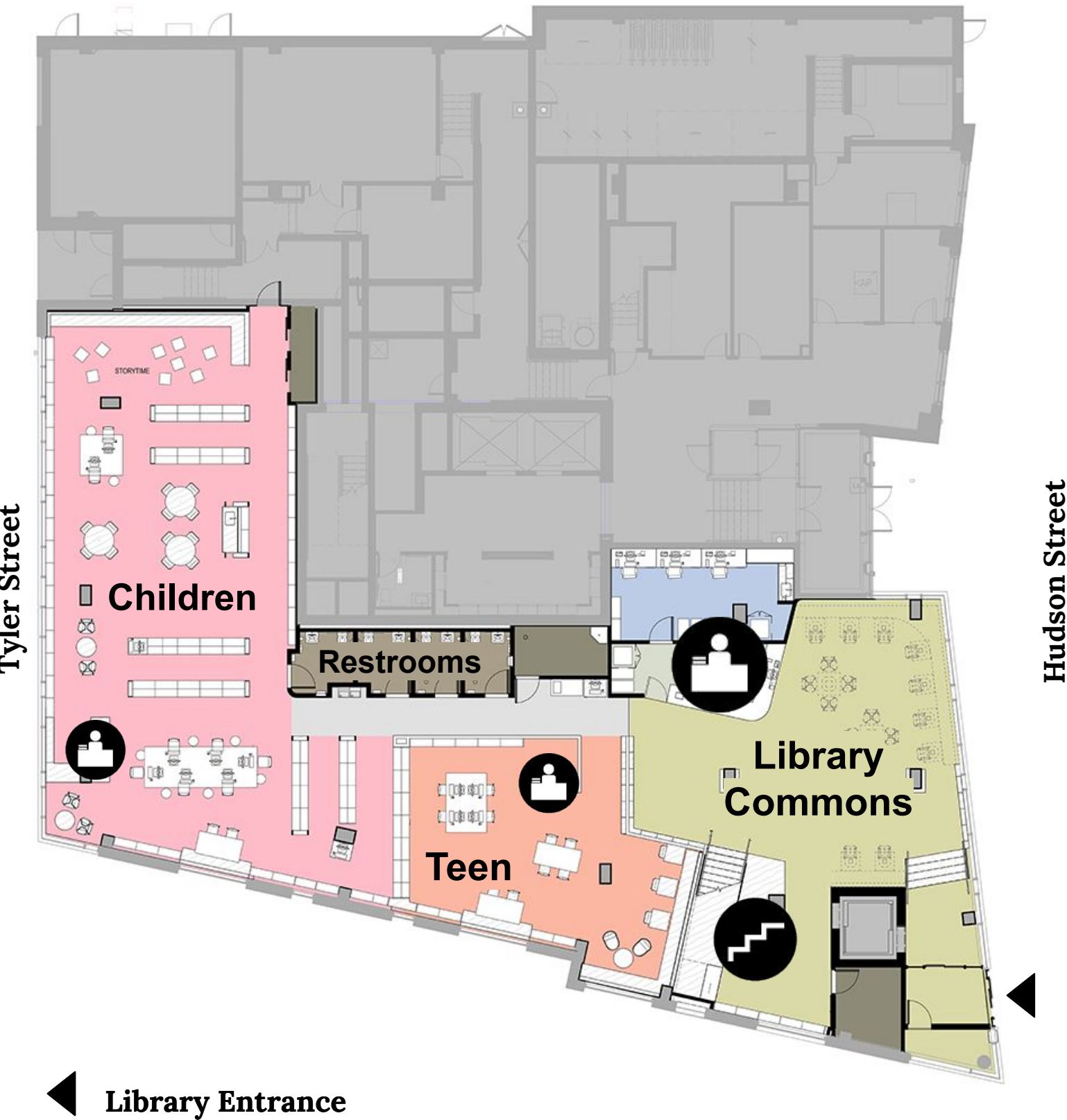
# PRELIMINARY FLOOR PLANS



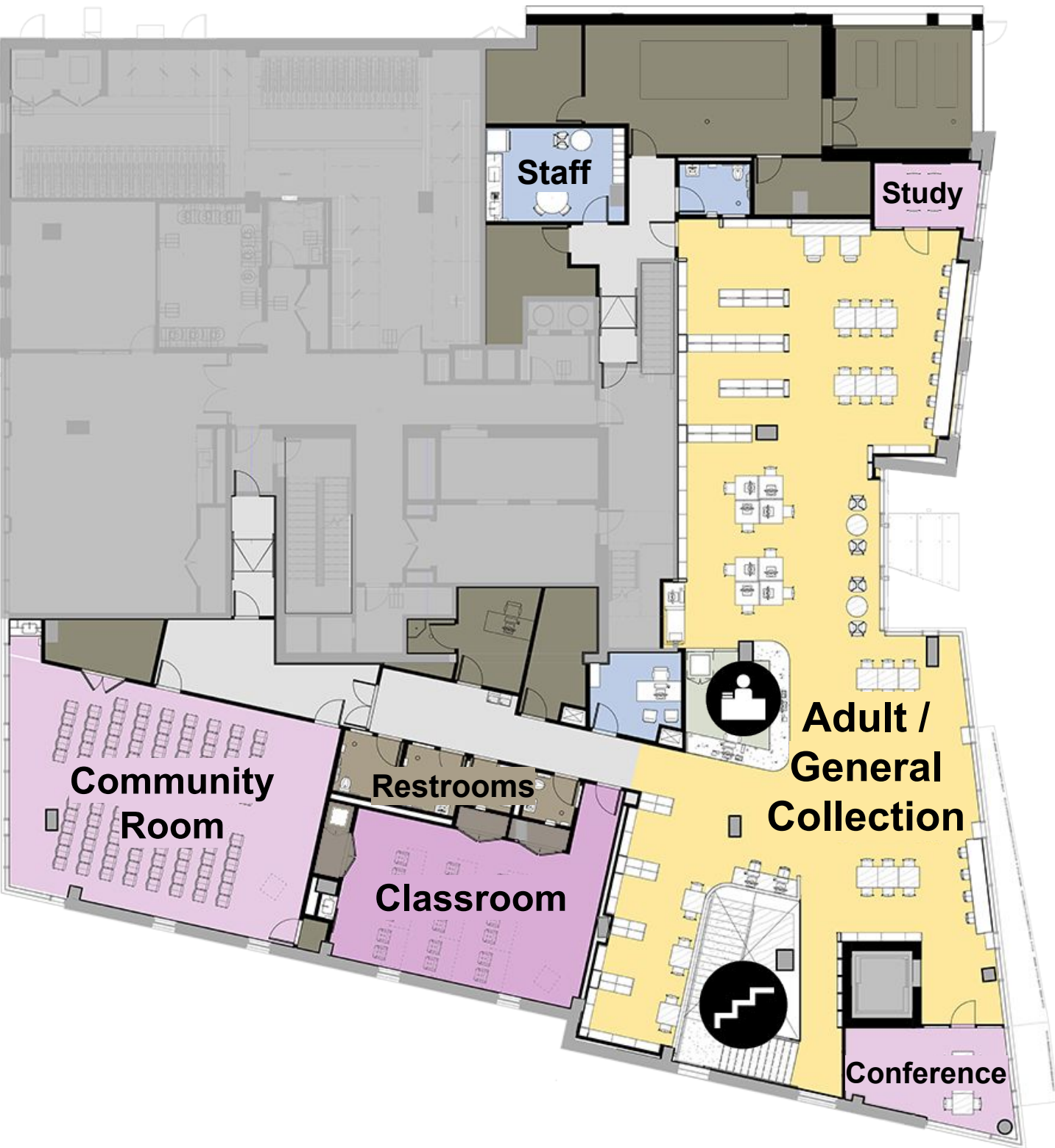


# PRELIMINARY PLANS

Ground Floor



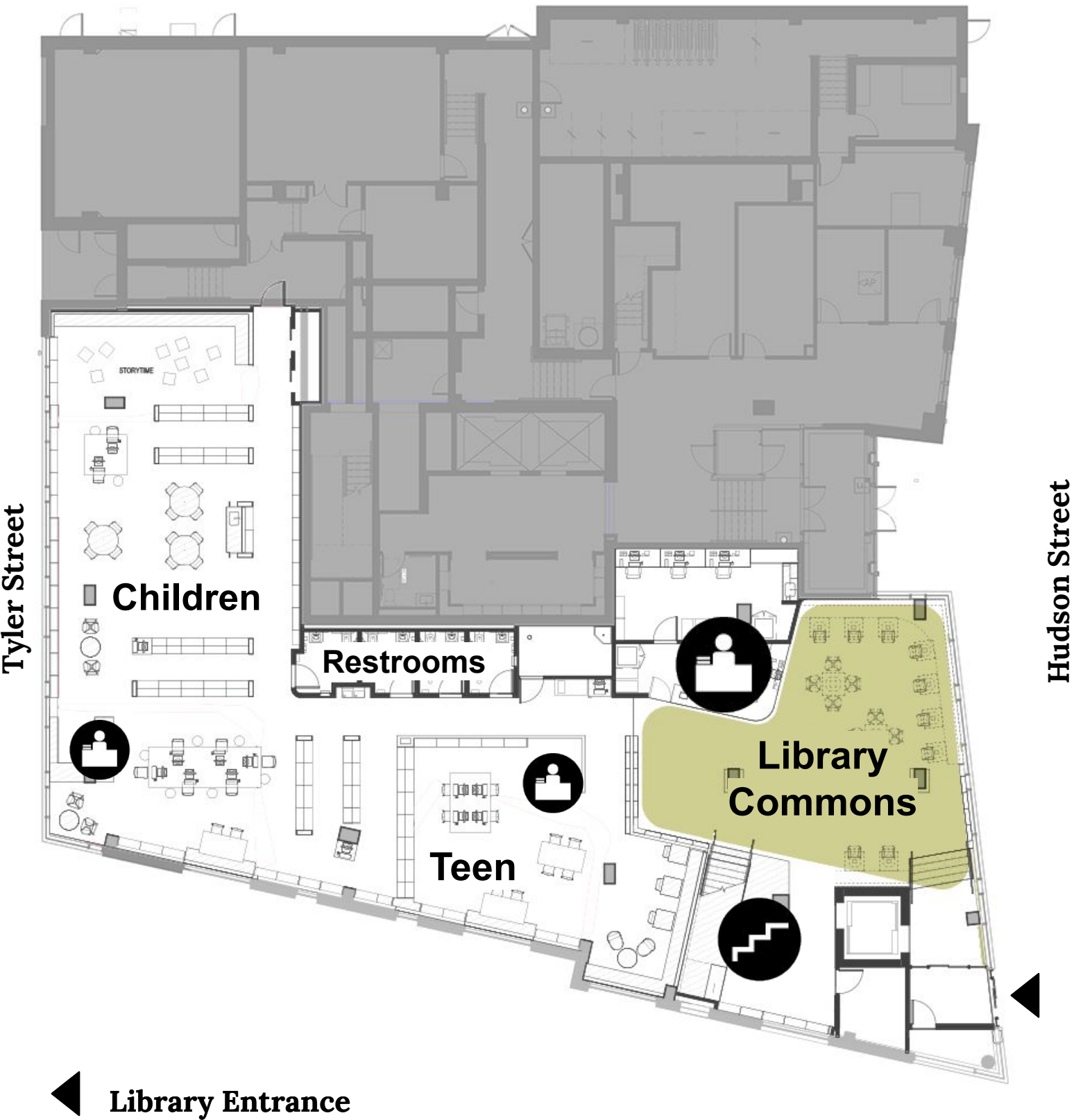
Second Floor



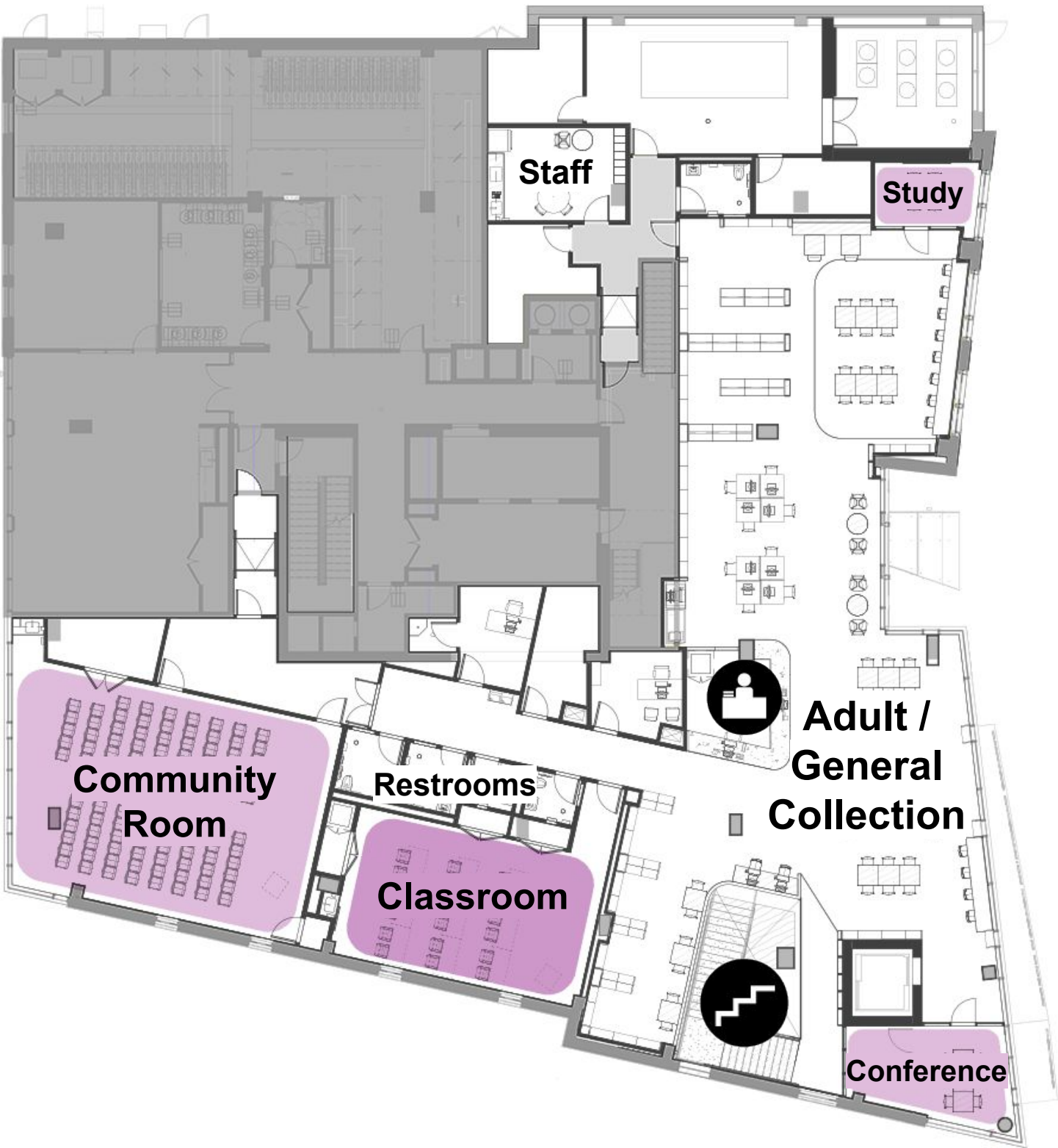


# GATHERING SPACES

Ground Floor



Second Floor





# INTERGENERATIONAL ACTIVATION



**First Night**  
Photo Credit: Jessica Rindaldi / Globe Staff



**First Night**  
Photo Credit: Jessica Rindaldi / Globe Staff



**First Night**  
Photo Credit: Conventures



**Mary Soo Hoo Park - Play Games**  
Photo Credit: Jonathan Levitt, Ngoc Doan, STIMSON



**Pao Art Center - Dim Sum Craft**  
Photo credit: Staff



**Pao Art Center - Display**  
Photo Credit: Mel Taing



# INTERGENERATIONAL SPACES



Midland Library, Portland, OR  
Colloqate



BPL Chinatown Branch, Temp.  
Boston, MA



Yellamundie Library at Liverpool Civic Place  
fjstudio



Ascension Chess Tournament  
Ferguson, MO



Fort Benjamin Harrison Branch Library  
Ratio Architects

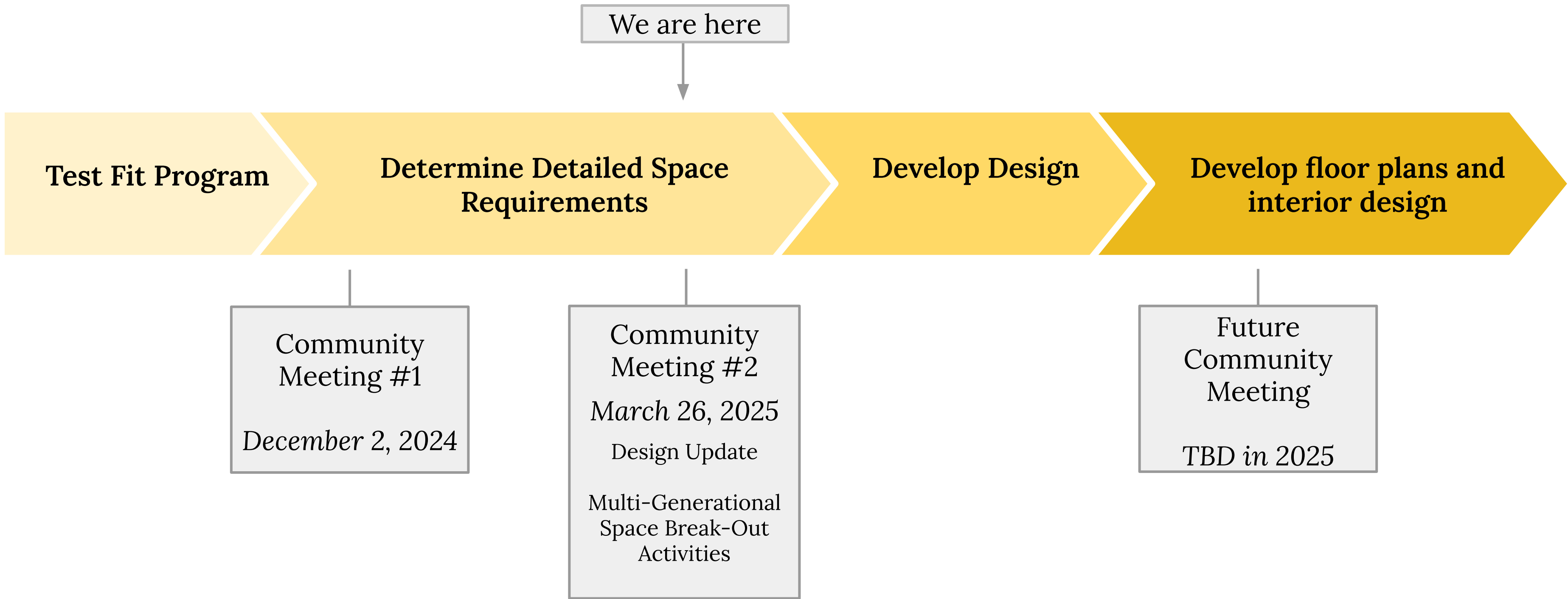


# NEXT STEPS

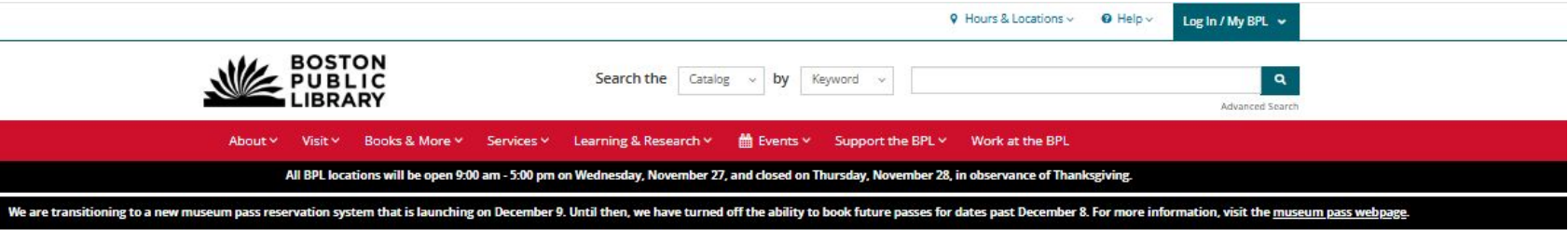




# COMMUNITY INPUT



# QUESTIONS & COMMENTS



## Chinatown Branch Project

Hours & Location About the Chinatown Branch

In FY20 review of viable sites will continue for a permanent location for library services in Chinatown. This site review will utilize information from the 2017 Chinatown Library Services Planning Study and feedback from the temporary library space.

The temporary Chinatown Branch opened in February 2018, fulfilling a long-term community goal to restore library services to the neighborhood. The branch provides a community gathering space, a place to study and learn, and access to computers and the internet.

### Project History

- Chinatown Library Services Final Report 12-29-17 (PDF)
- 2017-10-24 Final Community Meeting (PDF)
- 2017-07-18 Final (PDF)
- 2017-04-25 1st Community Meeting Presentation (PDF)

### Chinatown Branch Improvement Feedback.

We look forward to your feedback on our projects and will be glad to answer any questions you may have.

\* indicates required fields

Name

First Last

Email

Feedback \*



Feedback can be issued through the project page:

<https://www.bpl.org/chinatown-project/>

Written comments or questions can also be directed to:  
**Priscilla Foley**  
Director of Neighborhood Services  
617-859-2233  
[pfoley@bpl.org](mailto:pfoley@bpl.org)

# THANK YOU!

