



SOUTH END BRANCH LIBRARY

Community Meeting #6

May 28, 2025



Mayor Michelle Wu



utile

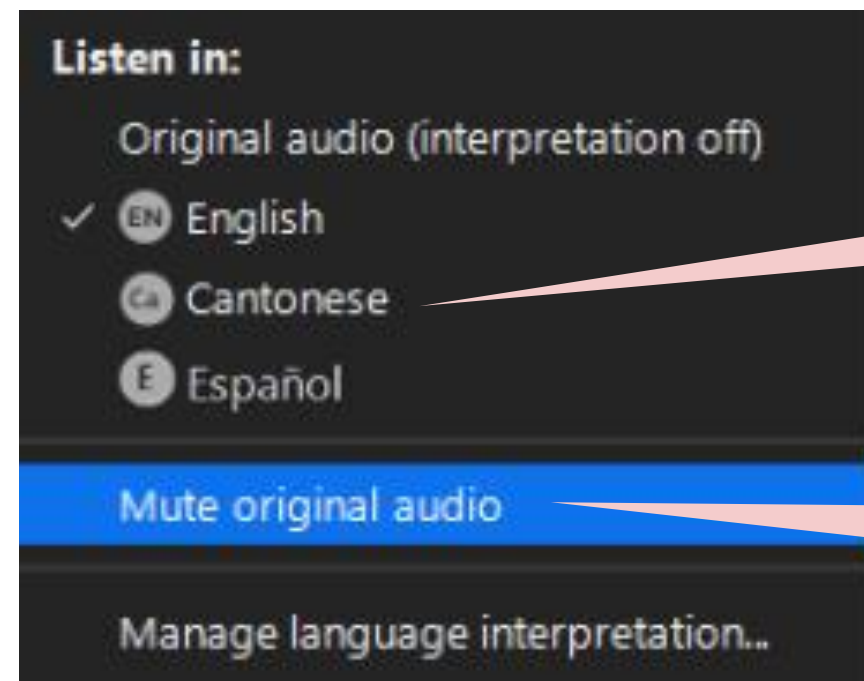


City of Boston
Public Facilities

TRANSLATIONS

Translations for this meeting are available live in the following languages:

Chinese (Cantonese)
Spanish (Español)



Select the language you would like to hear the presentation in

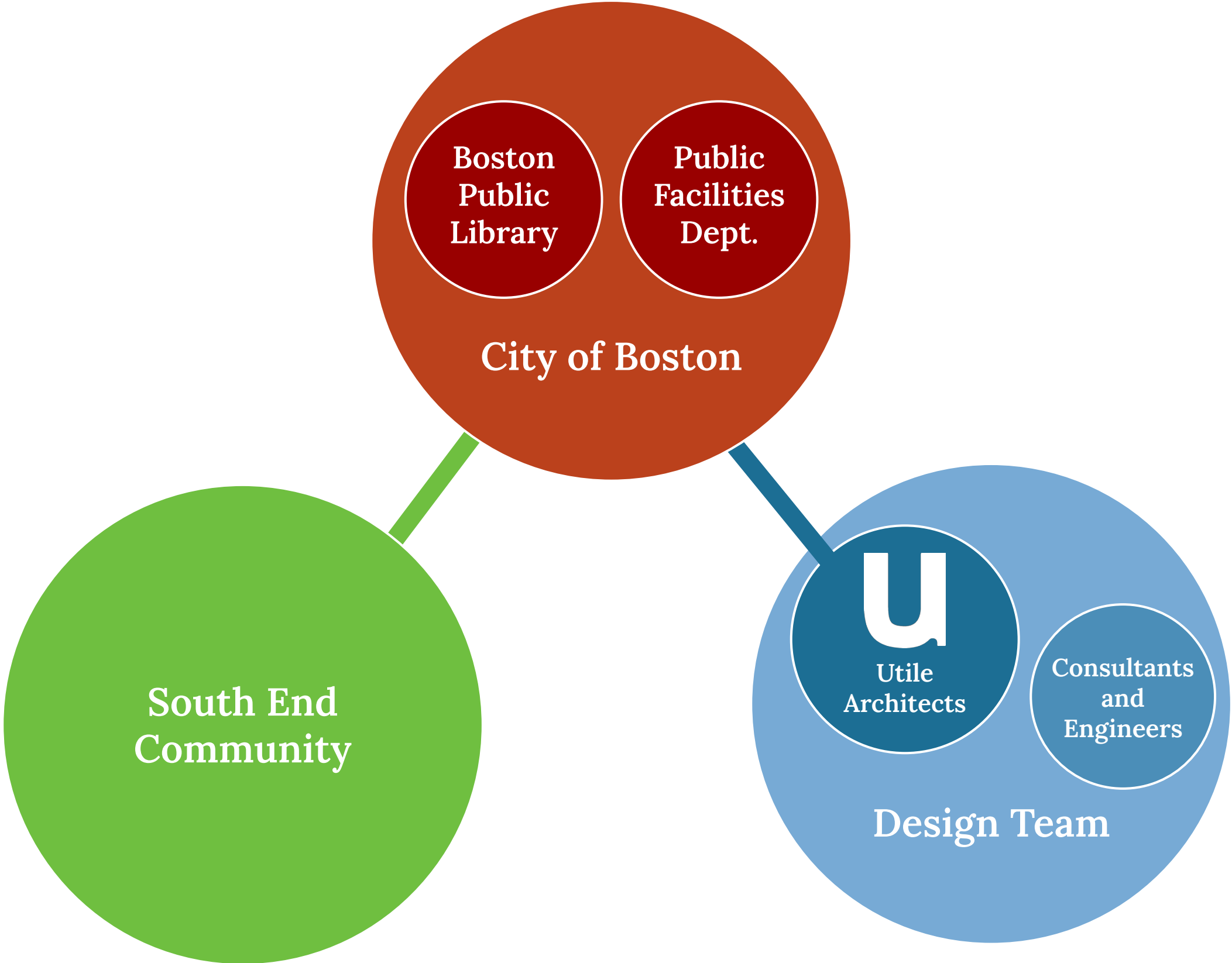
Select mute original audio to only hear your selected language channel

AGENDA

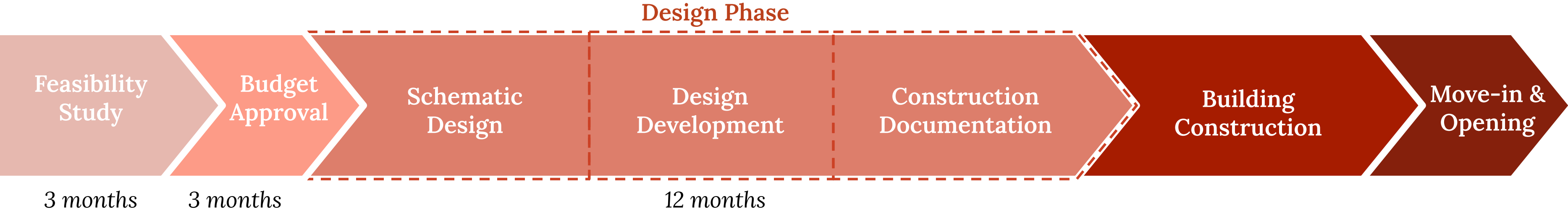
Community Meeting #6
May 28, 2025

1. Introductions
2. Schedule and Process
3. Community Meeting Recap
4. Floor Plan Update
5. Interior Design Progress
6. Exterior Design Progress
7. Next Steps
8. Q&A Discussion

PROJECT TEAM



ACCELERATED PROJECT SCHEDULE



Community Input

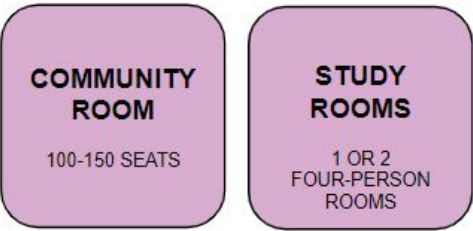
Community Meeting #1 Jan 8, 2024	Community Meeting #2 Feb 12, 2024	Community Meeting #3 June 12, 2024	Community Meeting #4 Dec 4, 2024	Community Meeting #5 Feb 10, 2025	Community Meeting #6 May 28, 2025
-------------------------------------	--------------------------------------	---------------------------------------	-------------------------------------	--------------------------------------	--------------------------------------

COMMUNITY MEETING RECAP

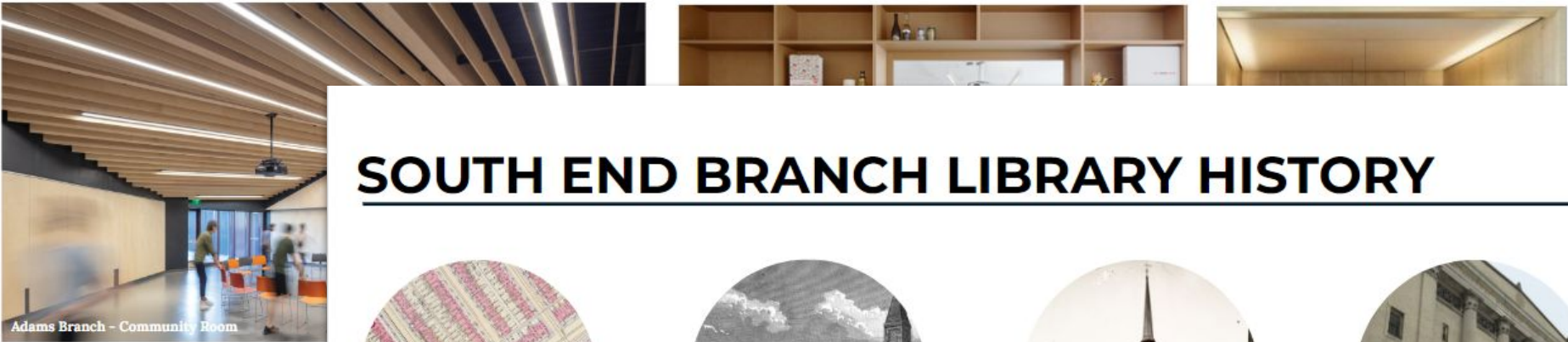


COMMUNITY MEETING #1 SUMMARY

CORE BRANCH LIBRARY BUILDING PROGRAM

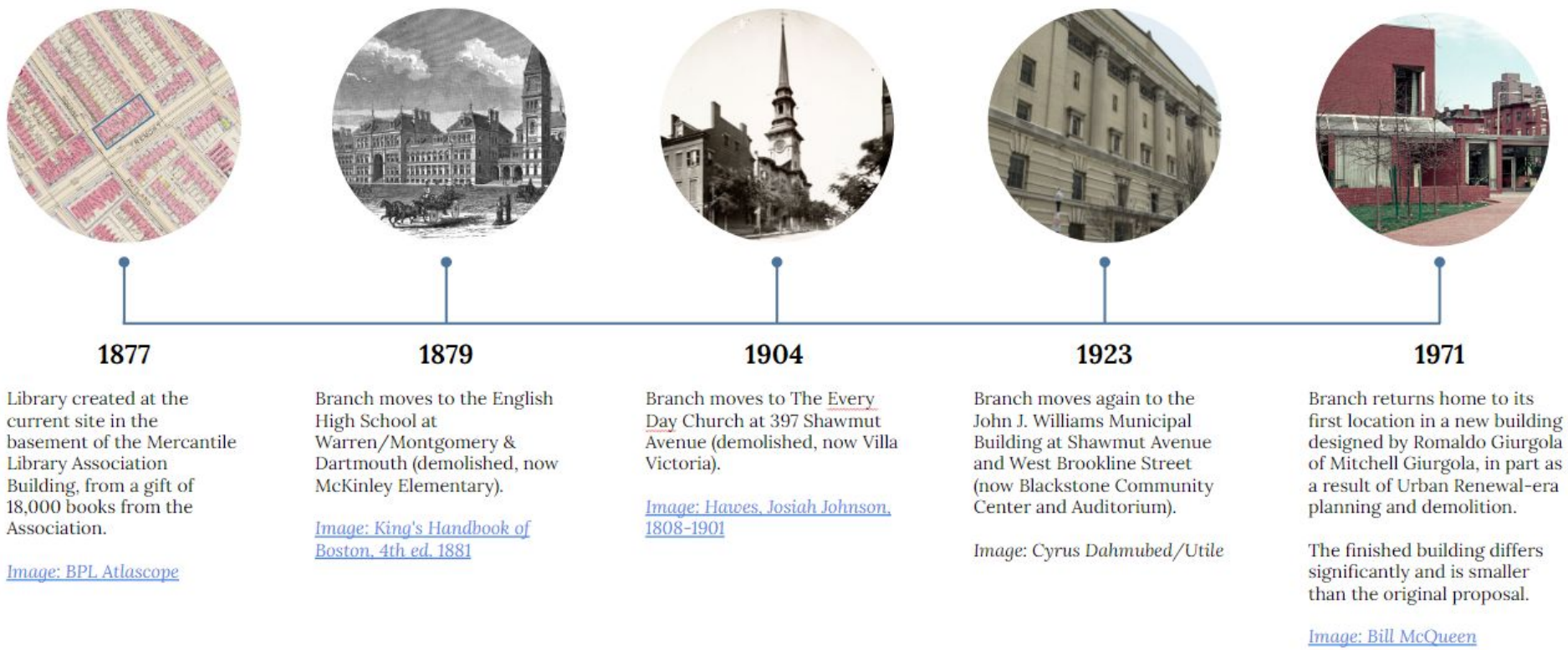


Meeting and Study Spaces



- Overview of engagement process and timeline
- History of the branch location and current building design
- Core branch library program review

SOUTH END BRANCH LIBRARY HISTORY



COMMUNITY MEETING #2 SUMMARY

SUMMARY

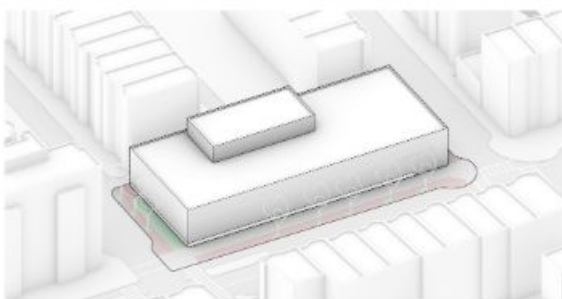
Renovation + Addition - 17,100 SF



- Opportunities:**
- Preserves the existing building shape and facades along Tremont and West Newton Street
 - Locates most (but not all) new construction above the floodplain

- Constraints:**
- The existing building and some new construction are in the floodplain
 - Headroom in the first floor of the addition is limited (approximately 8 feet ceilings); existing ceilings in the existing building
 - Costly interventions when adding onto existing building
 - Approximately half of Library Park is located including several mature trees
 - Entrance is set back from Tremont Street
 - Preserves the blank facades along Tremont and West Newton Street
 - May require a second elevator in addition to a motorized lift
 - Ground floor is oversized for Adult collection to accommodate other programs

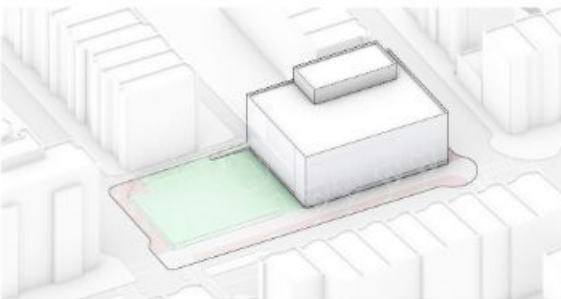
New Construction One Story - 15,050 SF



- Opportunities:**
- The main entrance is directly off of Tremont Street and West Newton Street
 - All program areas are located above the floodplain
 - All program areas are on one floor

Constraints:

New Construction Two Story - 15,845 SF

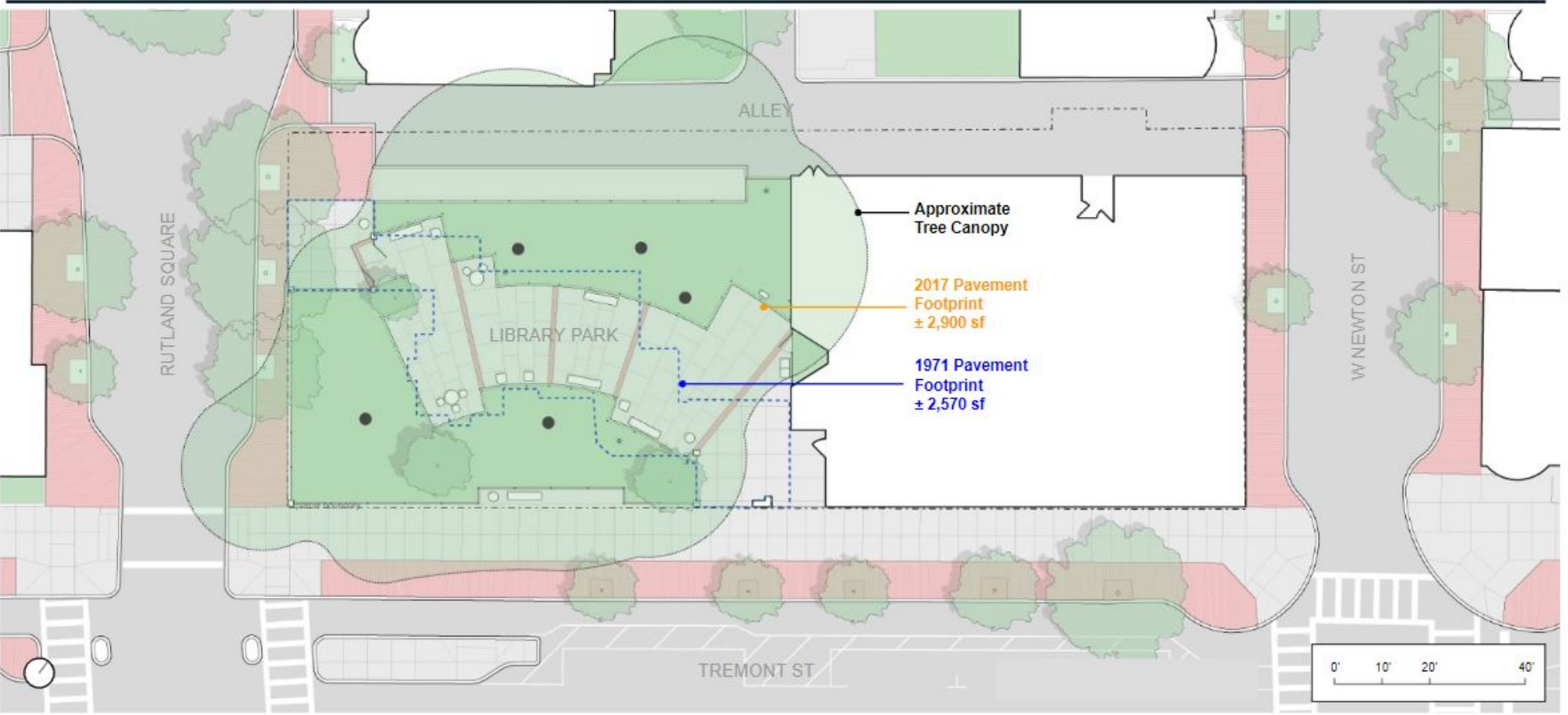


- Opportunities:**
- Maintains the majority of Library Park
 - The main entrance is directly off of Tremont Street and Library Park
 - All program areas are located above the floodplain

Constraints:

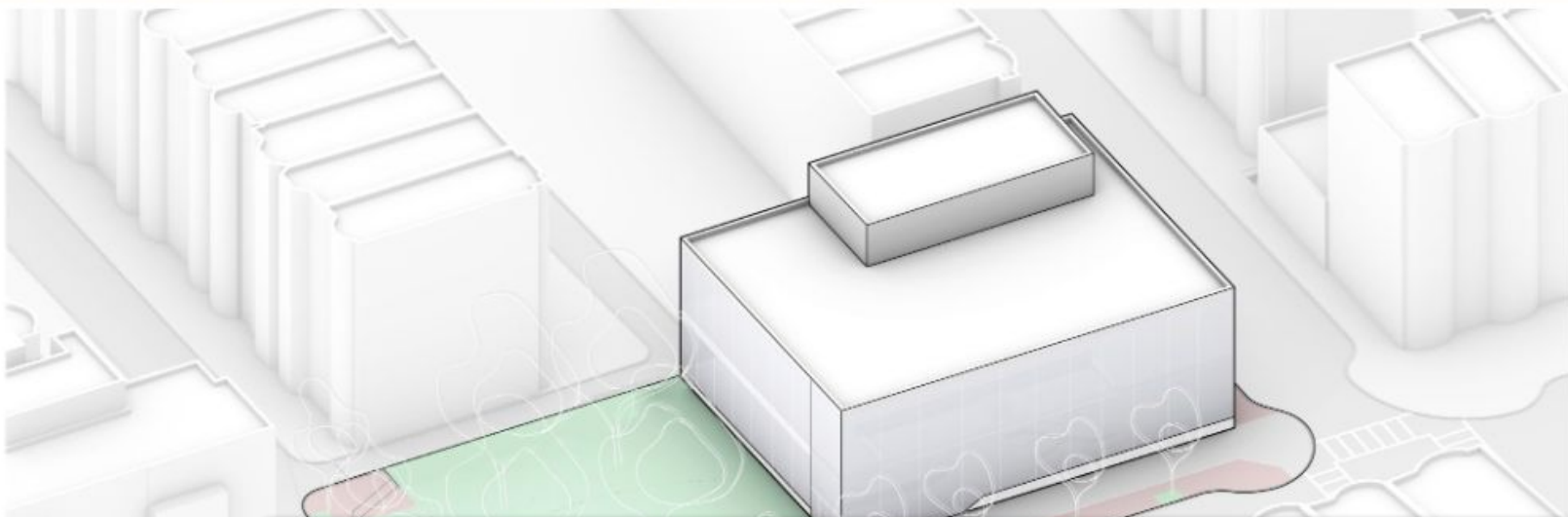
- Proposed South End Library building program
- Site Observations
- Test Fits

IMPACTS TO THE ADJACENT PARK AND TREES



COMMUNITY MEETING #3 SUMMARY

MULTI STORY OPTION - MASSING



- Conceptual Layout of Building Program
- Space-by-space Review of Program
- Preliminary Massing

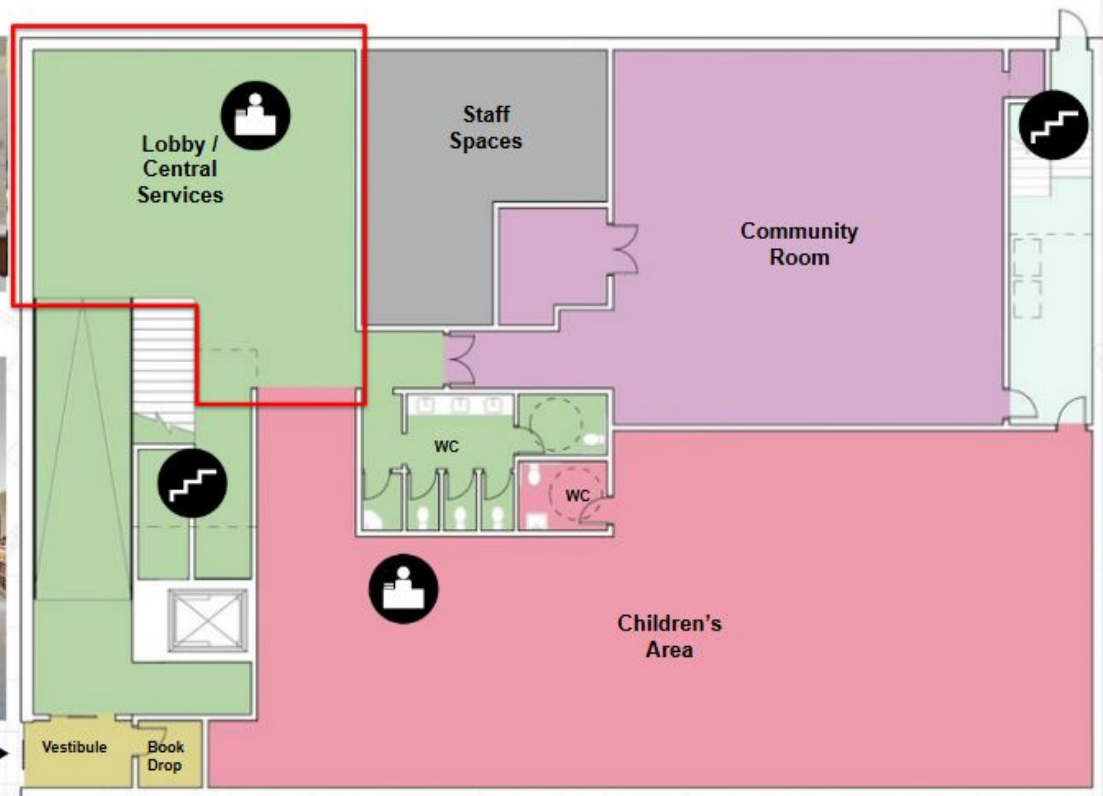
MULTI STORY OPTION - FIRST FLOOR CENTRAL SERVICES



Views to the Park



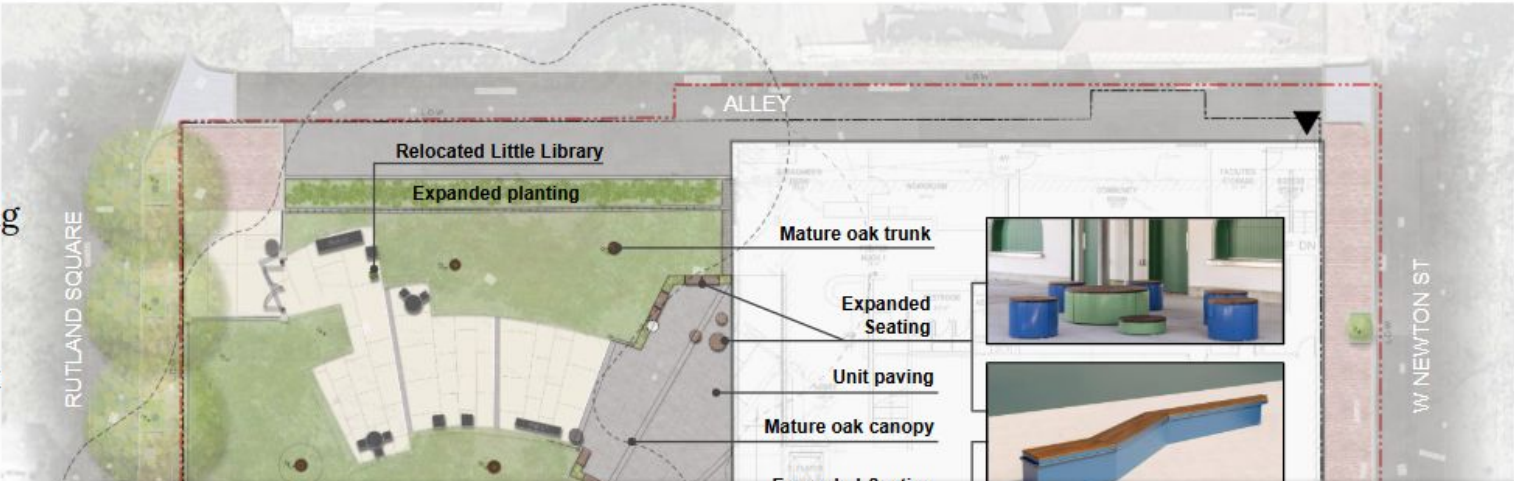
Visible Service Points



COMMUNITY MEETING #4 SUMMARY

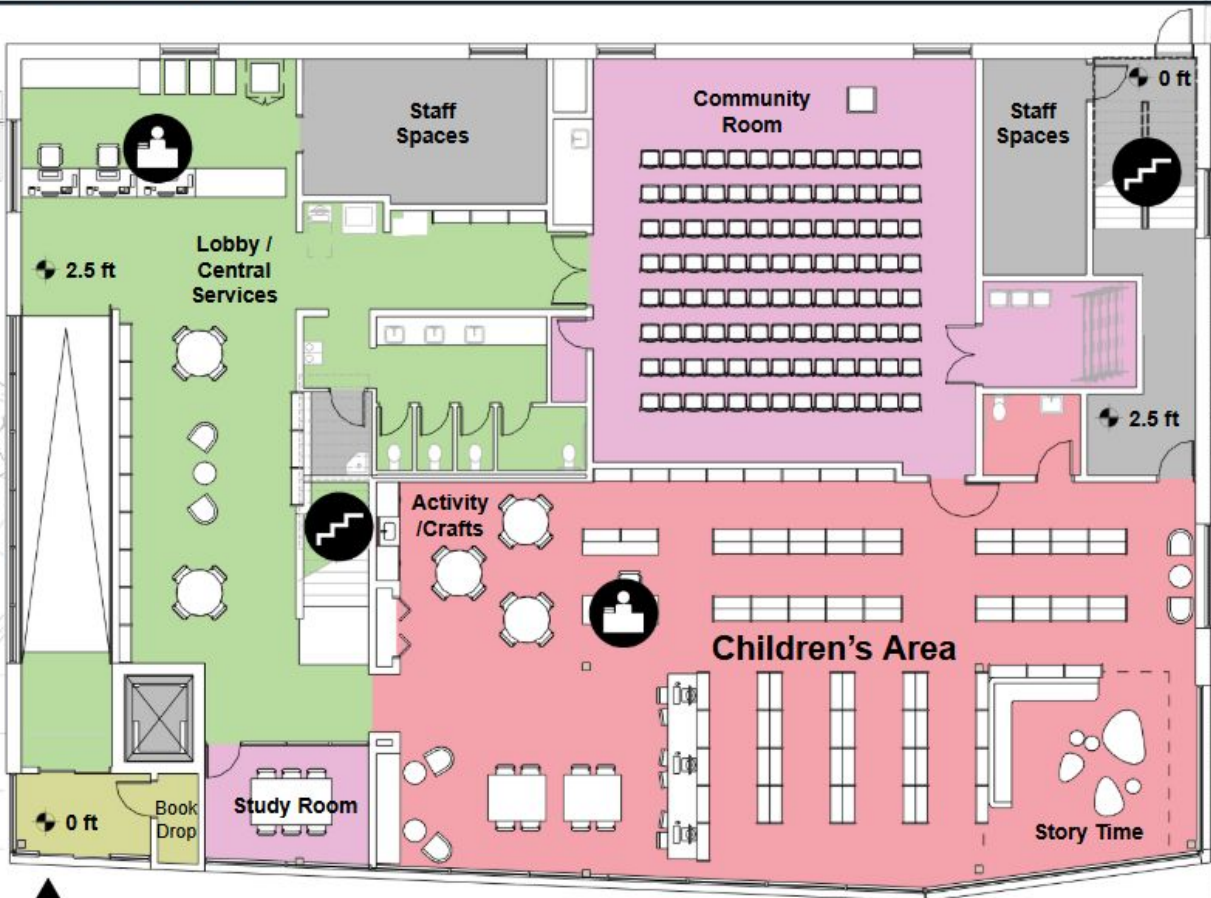
LANDSCAPE PLAN

- Library Park
- Minimal park intervention
 - Expanded Seating
 - Paving changes
 - Magnolia at park entrance
 - North planting adds 385 SF



FIRST FLOOR PLAN

- Children's Area
- 13,250 - 13,750 volumes
 - 34 seats (6% increase)
 - 3 AWE computer stations
 - Includes tweens area, story time area and crafts
- Community Room
- 104 seated capacity
 - Adjacent to lobby and main entrance
- Study Rooms
- Opportunities for larger study spaces



- Library Park Impacts
- Progress Floor Plans
- Project Sustainability Initiatives

COMMUNITY MEETING #5 SUMMARY

ENTRANCE LOBBY

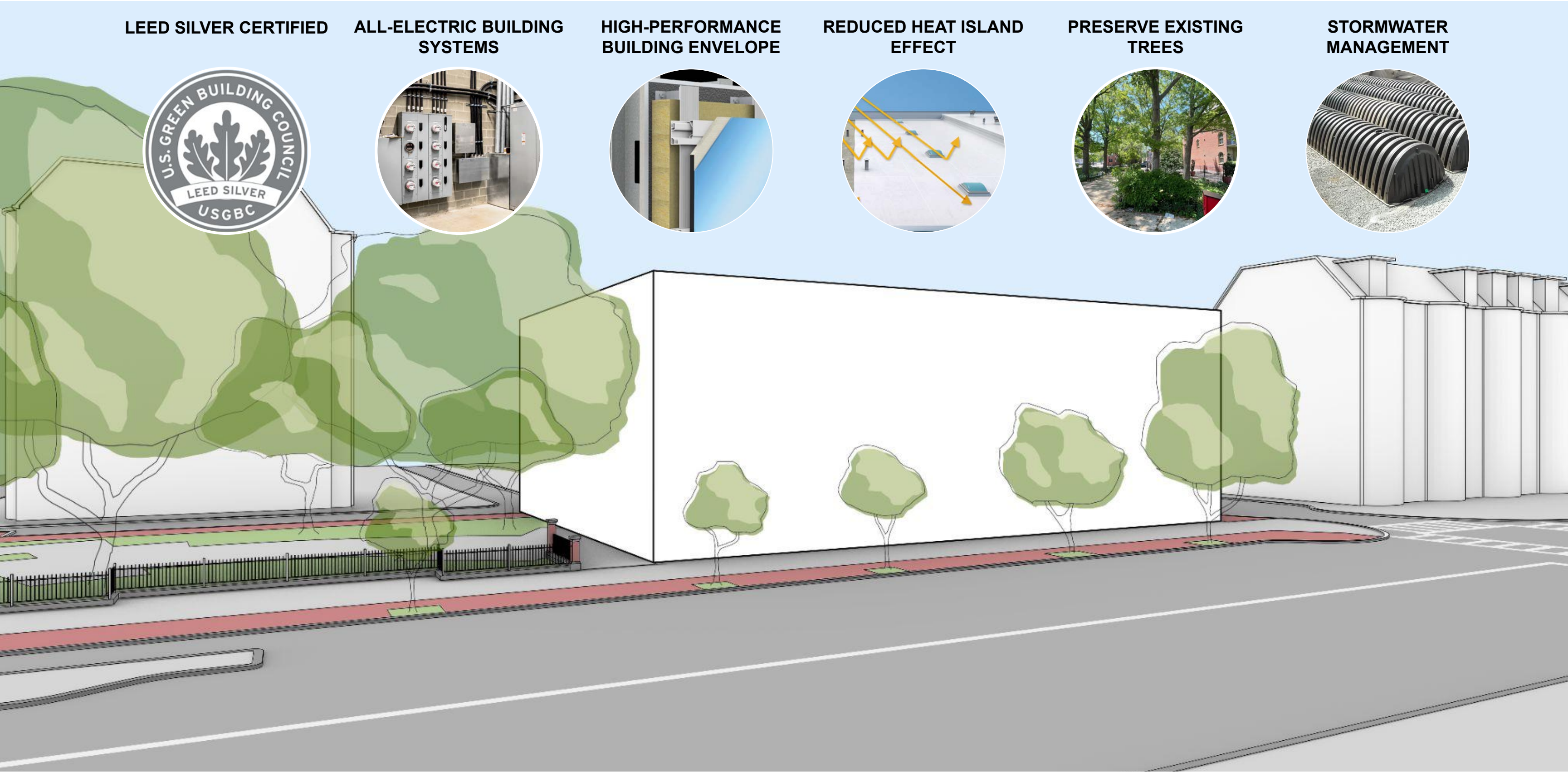


- Progress Floor Plans
- Exterior Design Concept Introduction
- Interior Design Concept Introduction

TREMONT STREET VIEW



SUSTAINABILITY



LEED SILVER CERTIFIED

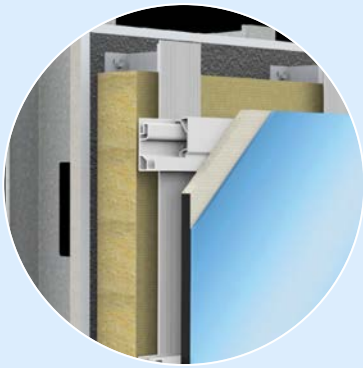
ALL-ELECTRIC BUILDING SYSTEMS

HIGH-PERFORMANCE BUILDING ENVELOPE

REDUCED HEAT ISLAND EFFECT

PRESERVE EXISTING TREES

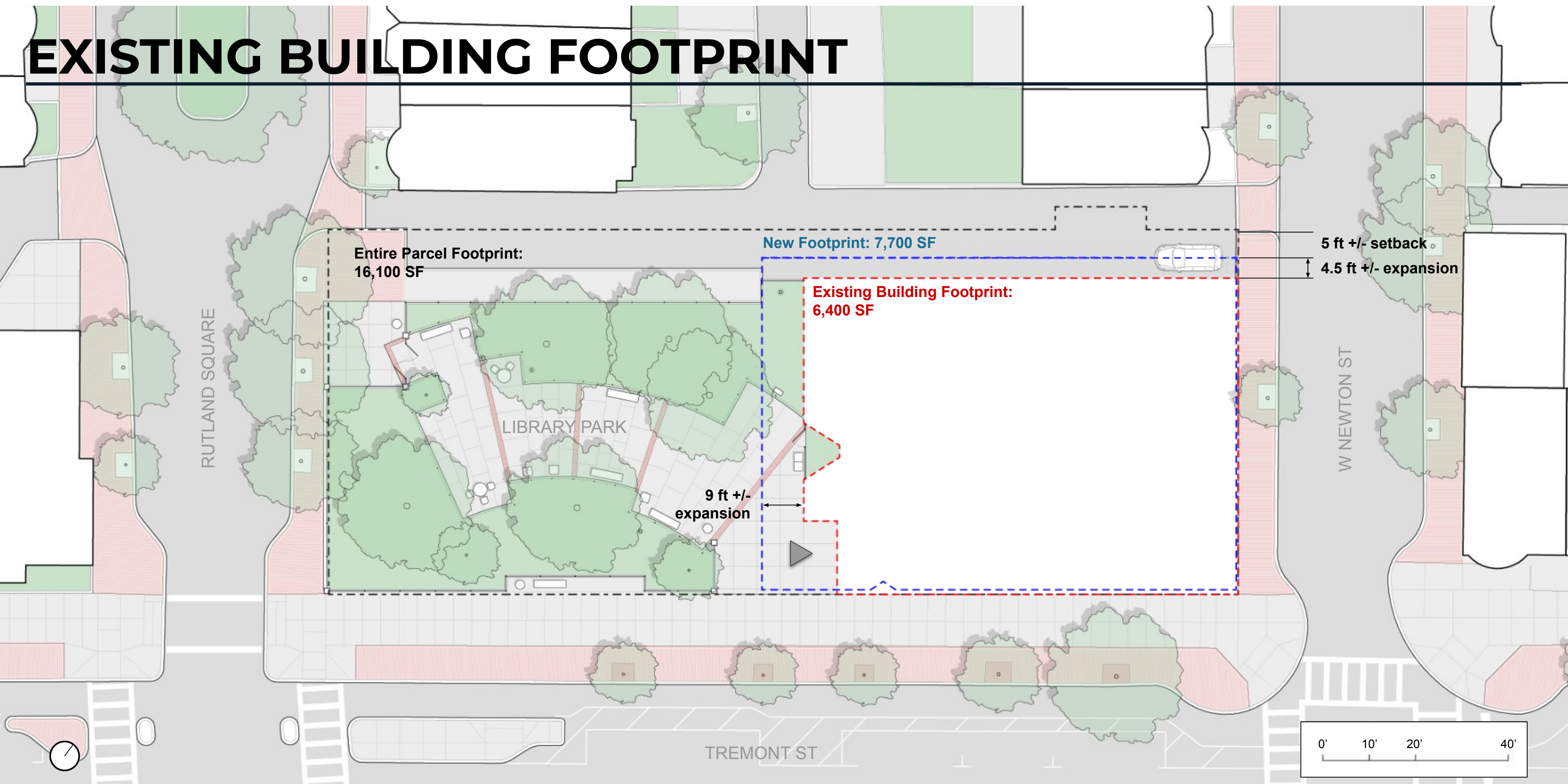
STORMWATER MANAGEMENT



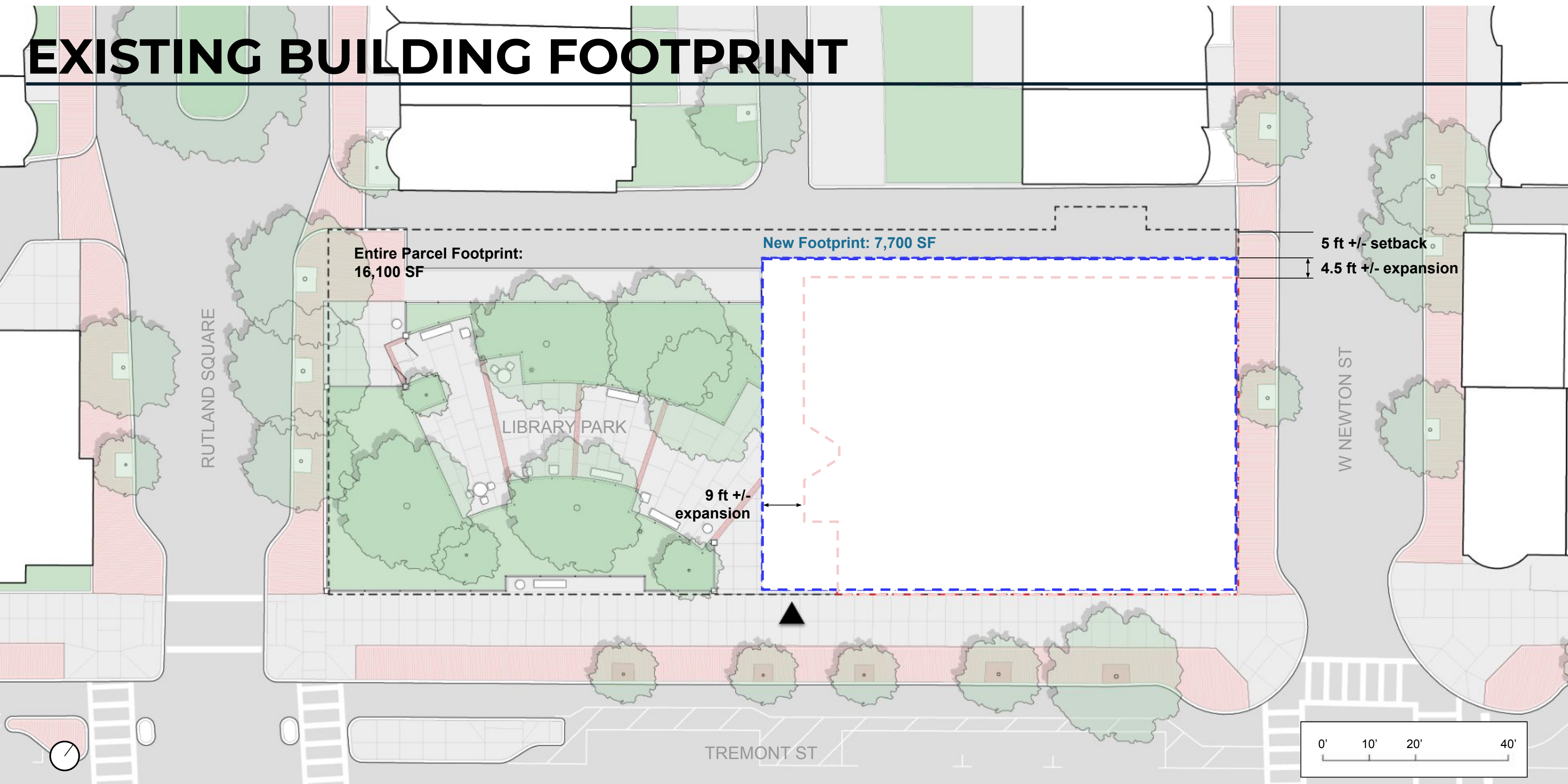
FLOOR PLAN UPDATE



EXISTING BUILDING FOOTPRINT

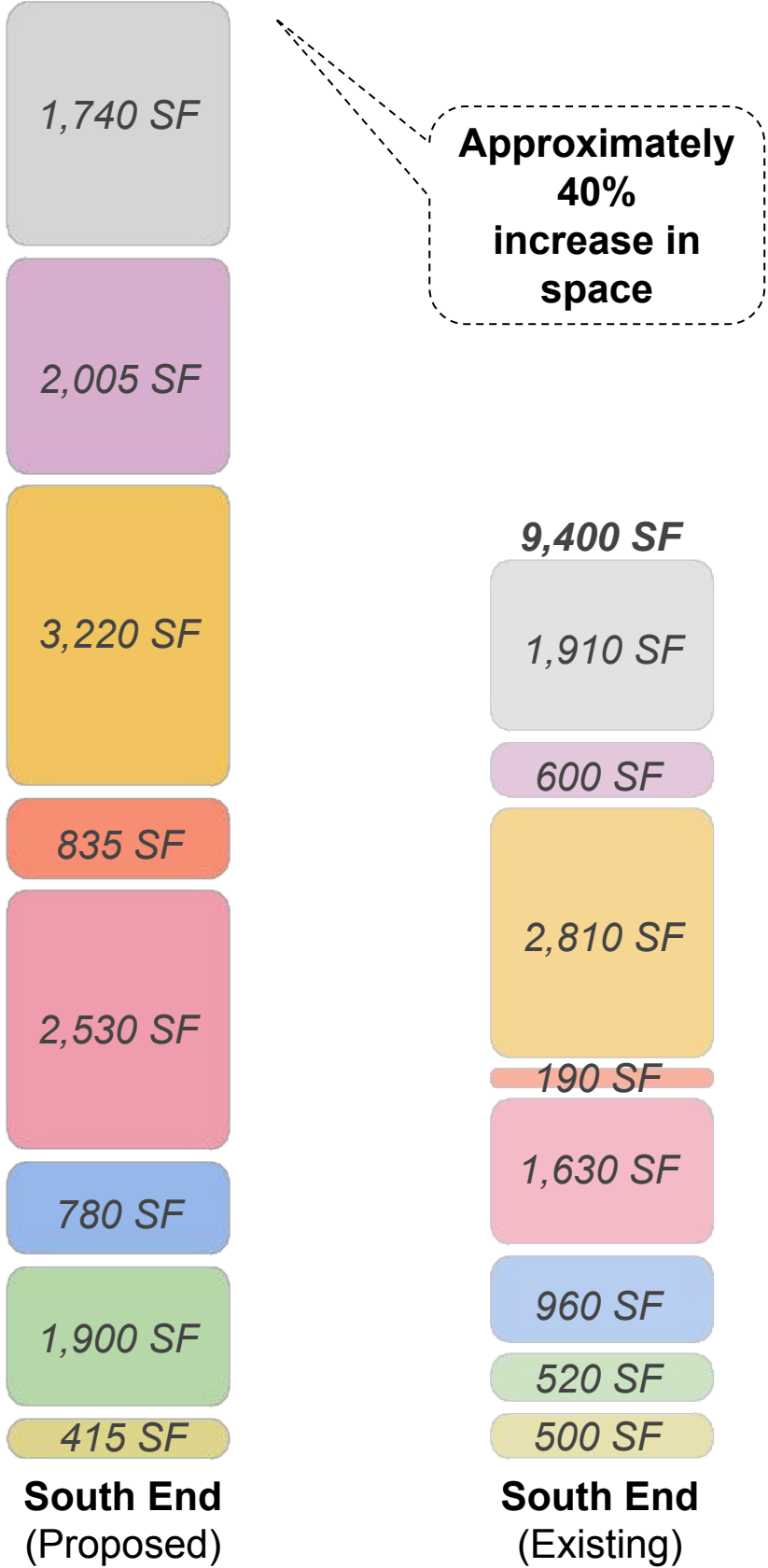


EXISTING BUILDING FOOTPRINT



PROPOSED SOUTH END BUILDING PROGRAM

15,500-16,500 SF



Community - 2,005 SF

- Community Meeting Room, seating capacity of +/- 100
- Multi-purpose meeting room, 8-10 seats
- (3) Study rooms, 4-6 seats

Adult Area - 3,220 SF

- 12,500 - 13,000 volumes
- 32 seats (18.5% increase)
- 12 computer stations
- Includes Local History

Teen Area - 830 SF

- 3,000 volumes
- 10 seats (250% increase)
- 4 computer stations

Children Area - 2,530 SF

- 13,250 - 13,750 volumes
- 38 seats (18% increase)
- 4 AWE computer stations
- Includes tweens area, story time area and crafts

Staff - 780 SF

- Work room, break room, staff restroom and storage
- Branch librarian's office

Central Services - 1,900 SF

- Borrower's desk
- Holds shelving, Friend's book sale, community bulletin board and display areas
- Restrooms

Entry - 415 SF

- Vestibule, lobby and book drop

Support - 1,740 SF

- Friend's and facilities storage
- Mechanical and electrical rooms

Grossing Factor (+/- 15%)

- Circulation between program areas and shaft spaces

TOTAL - 15,500-16,500 SF

FIRST FLOOR PLAN

Children's Area

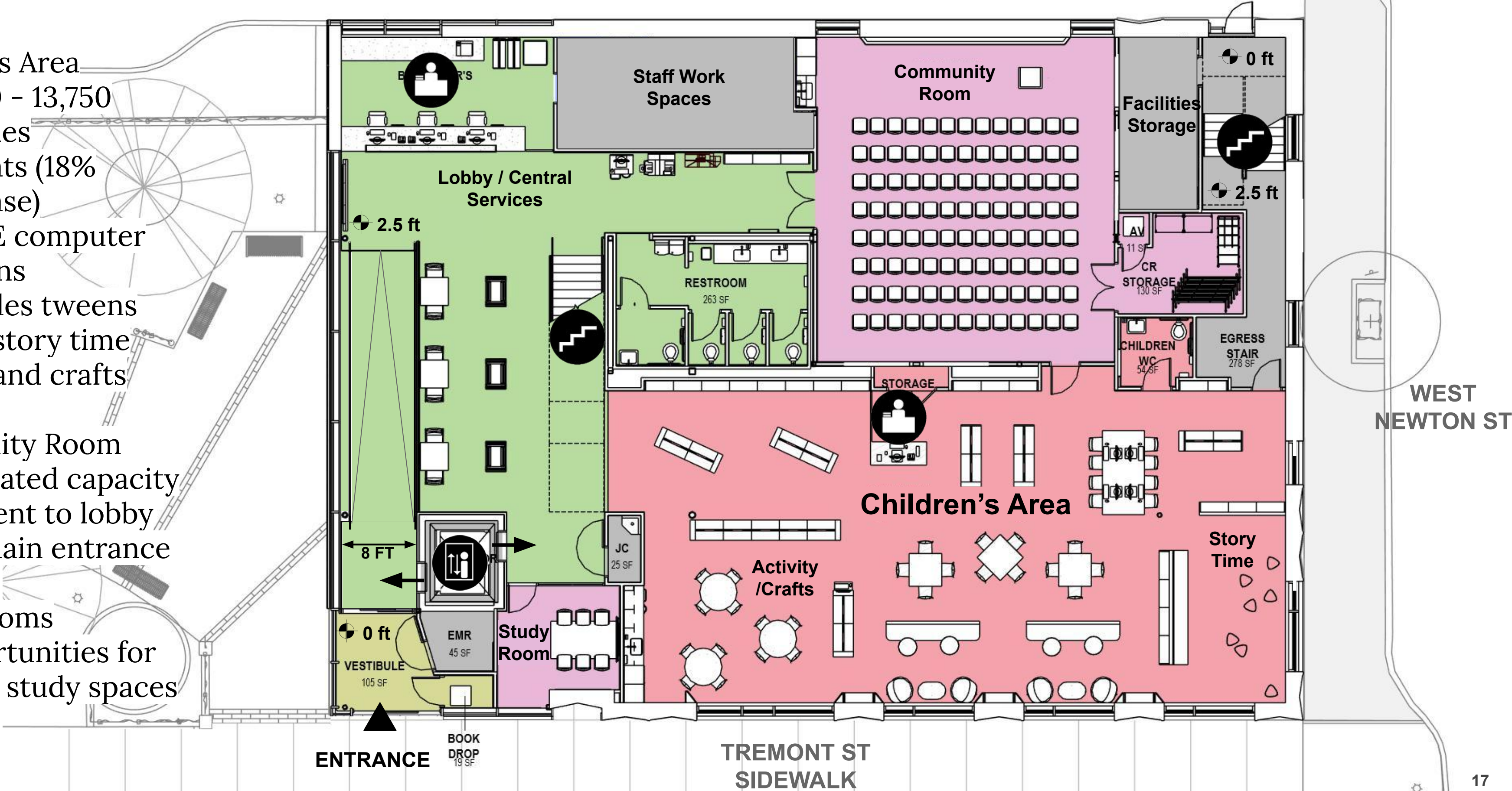
- 13,250 - 13,750 volumes
- 38 seats (18% increase)
- 4 AWE computer stations
- Includes tweens area, story time area, and crafts

Community Room

- 104 seated capacity
- Adjacent to lobby and main entrance

Study Rooms

- Opportunities for larger study spaces



SECOND FLOOR PLAN

Teens Area

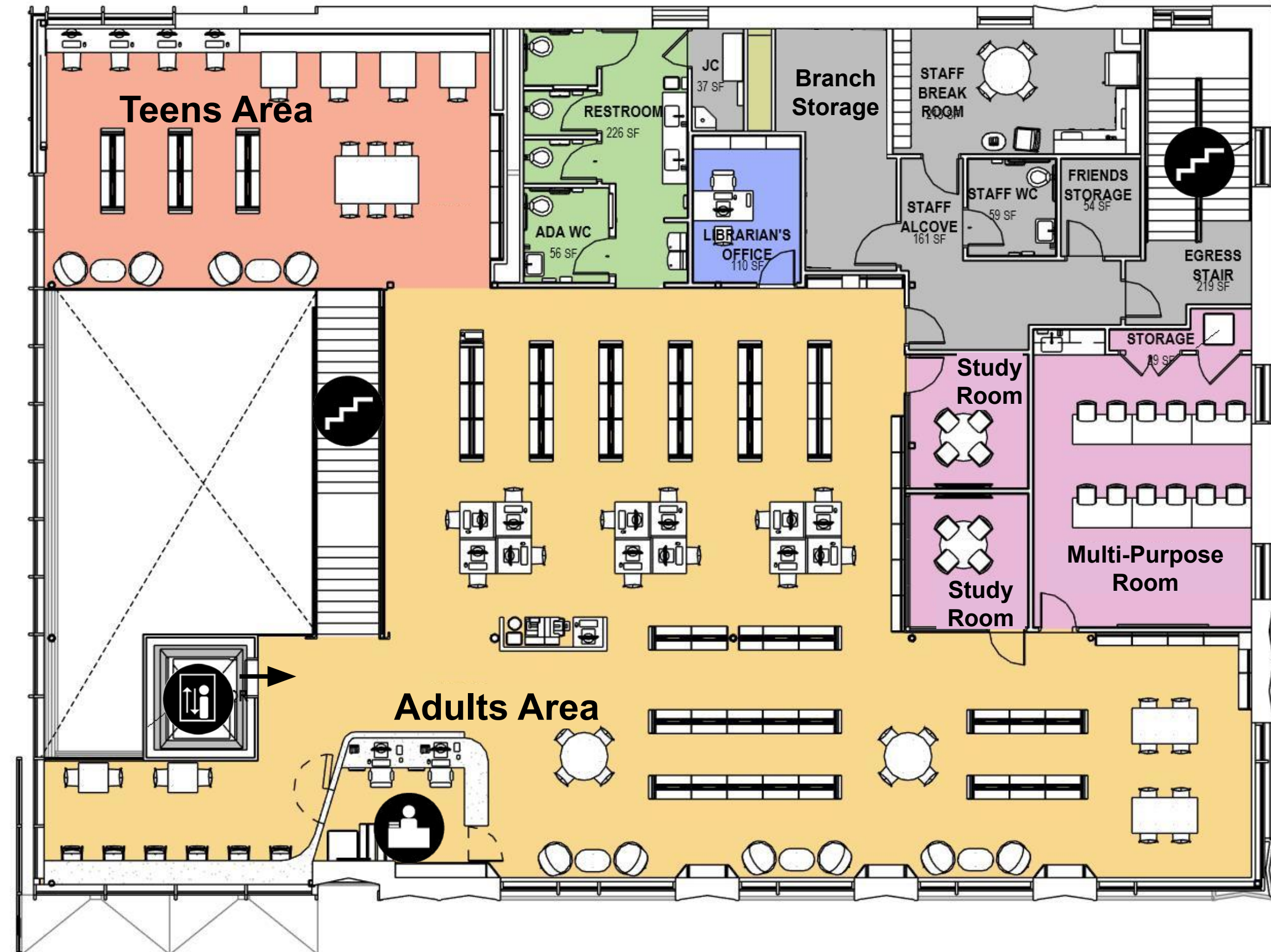
- 3,000 volumes
- 14 seats (250% increase)
- 4 computer stations

Adult Area

- 12,500 - 13,000 volumes
- 32 seats (18.5% increase)
- 12 computer stations
- Includes Local History

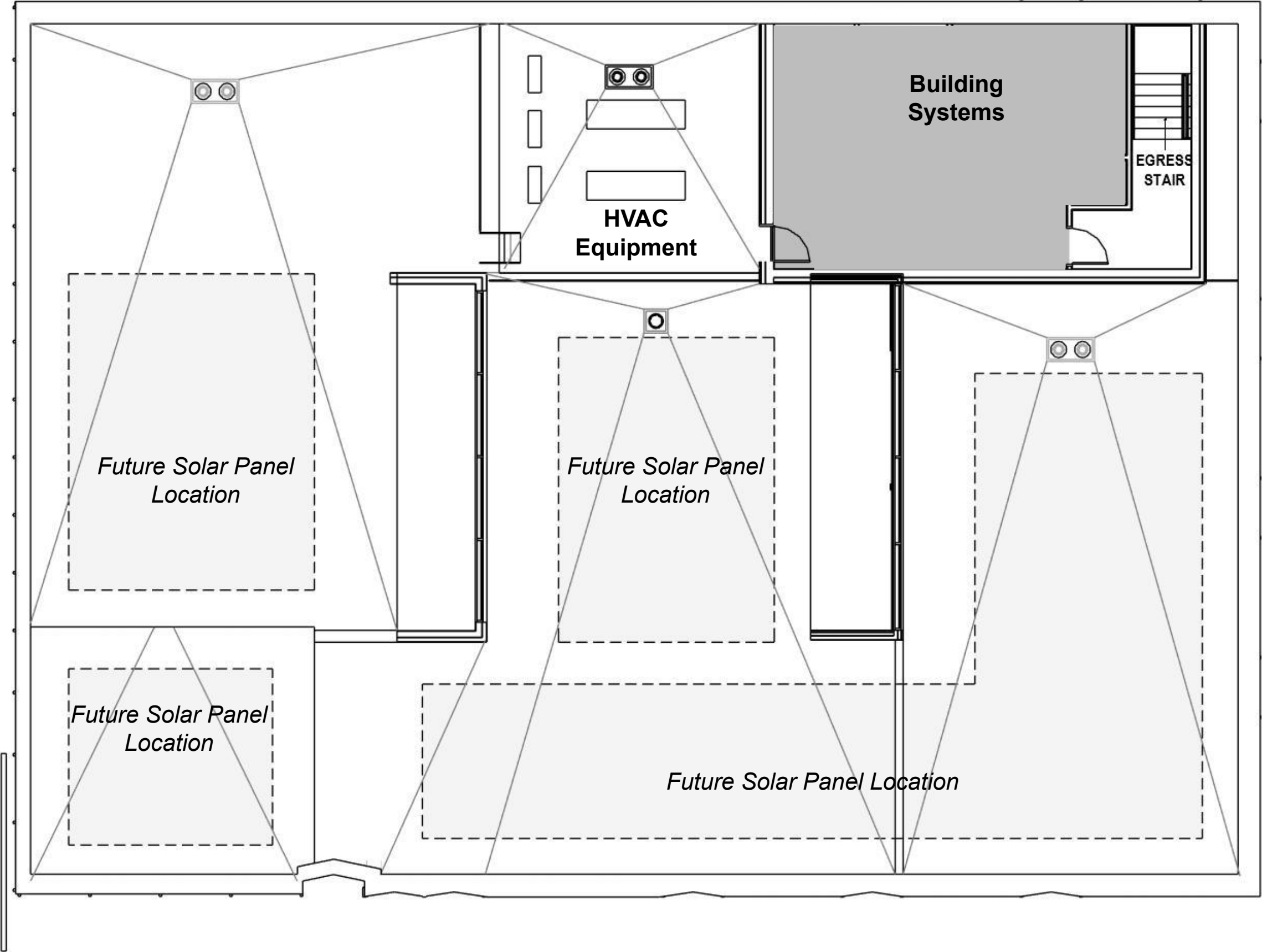
Study & Multi-Purpose Rooms

- Opportunities for multiple sized rooms



THIRD FLOOR/ROOF PLAN

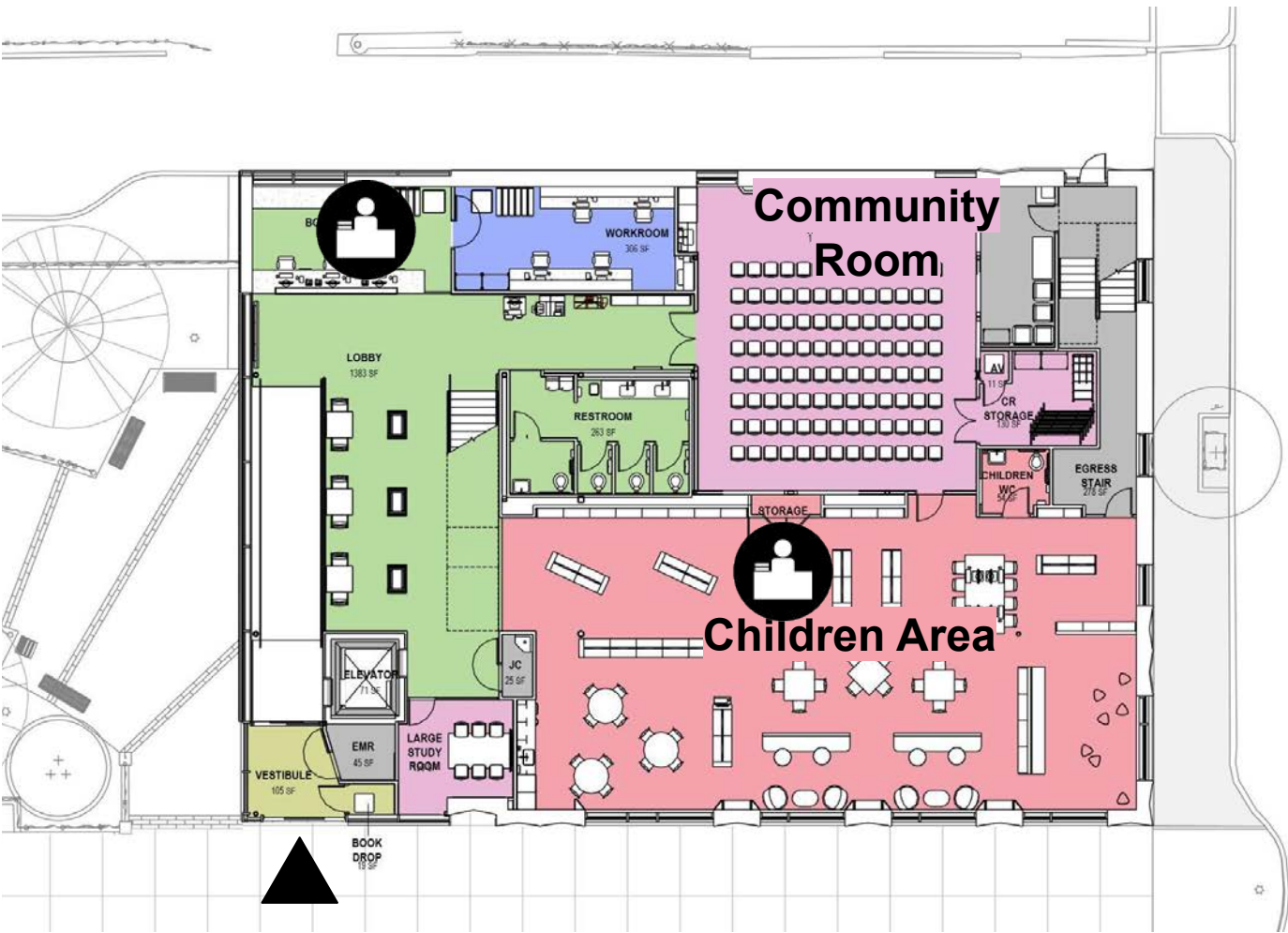
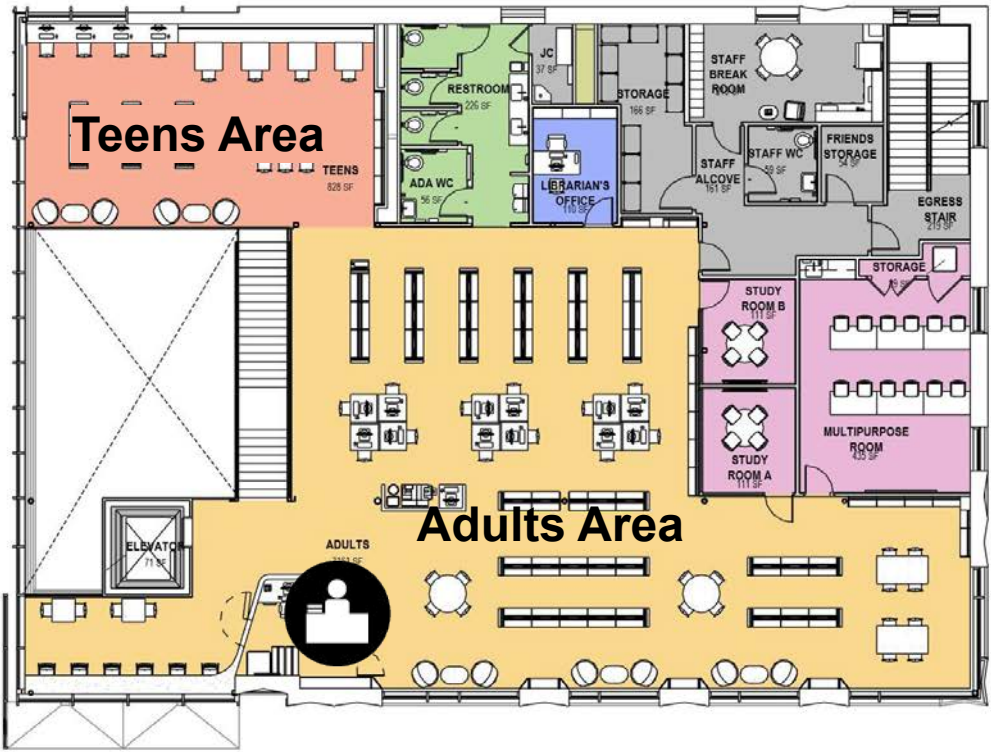
- Roof Area
- Solar ready infrastructure



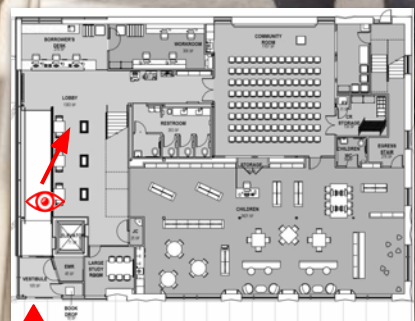
INTERIOR DESIGN PROGRESS



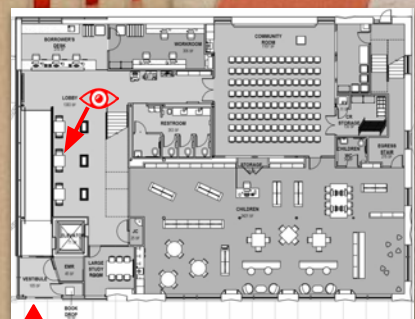
INDOOR - OUTDOOR



ENTRANCE LOBBY



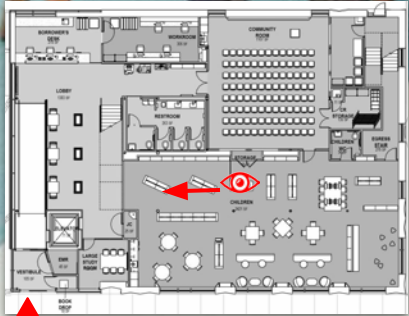
ENTRANCE LOBBY



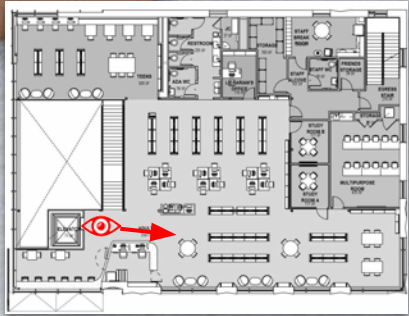
CHILDREN READING AREA



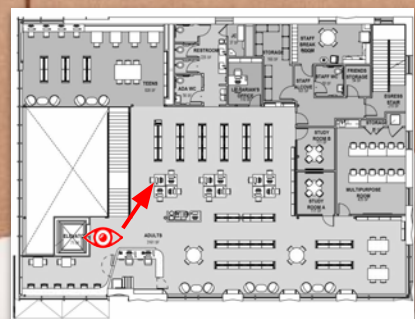
CHILDREN READING AREA



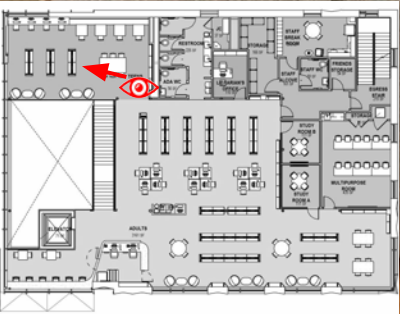
ADULT READING AREA



ADULT READING AREA



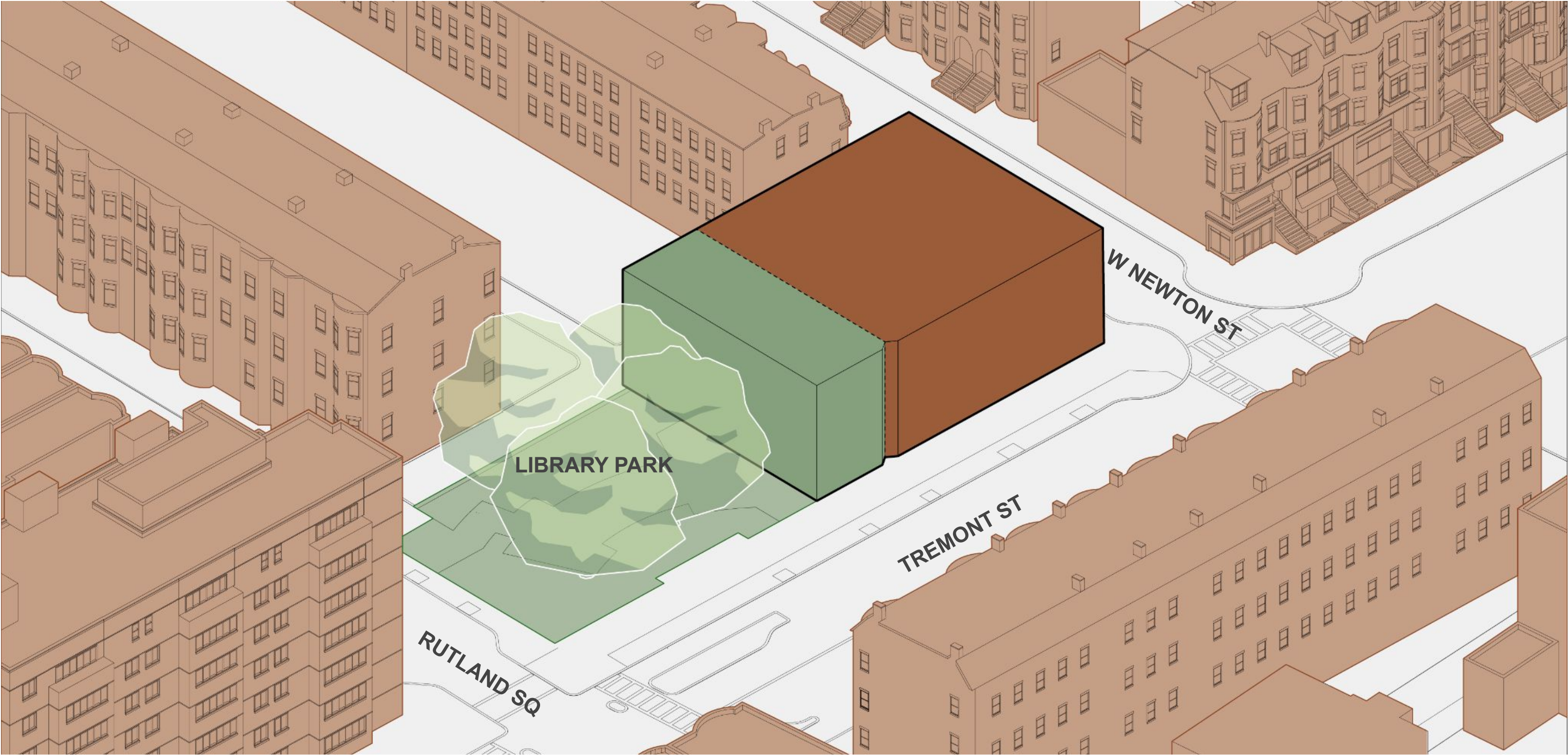
TEEN READING AREA



EXTERIOR DESIGN PROGRESS



RELATING TO CONTEXT





TREMONT STREET VIEW

WEST NEWTON CORNER





WEST NEWTON AT ALLEY



LIBRARY PARK

FREE TO ALL

NEXT STEPS



CONSTRUCTION DOCUMENTATION & BIDDING PROCESS

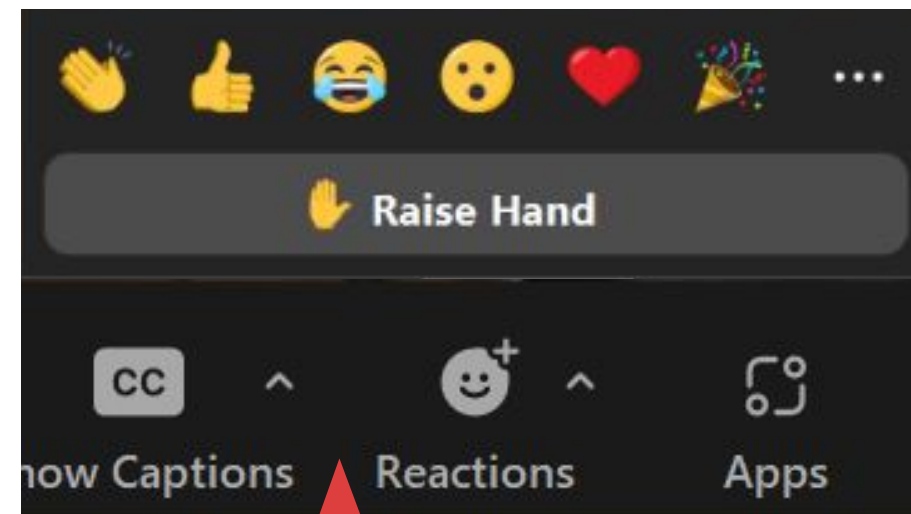
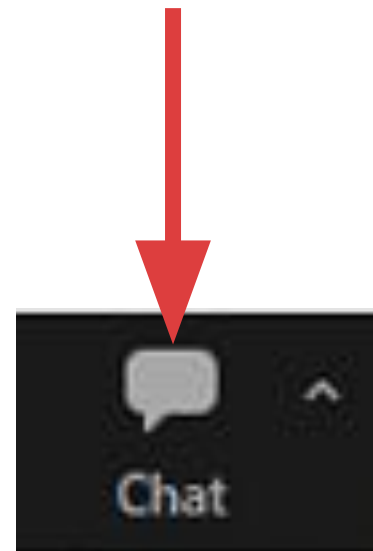


QUESTIONS & COMMENTS?



QUESTIONS & COMMENTS

For written comments or questions:
Use the chat dialog box



To ask a question:
Raise hand and wait to be called on

QUESTIONS & COMMENTS

Hours & Locations

Help

Log In / My BPL

BOSTON PUBLIC LIBRARY

Search the

Catalog

by

Keyword

Advanced Search

About

Visit

Books & More

Services

Learning & Research

Events

Support the BPL

Work at the BPL

South End Branch Project

Hours & Location

About the South End Branch

Branch Improvement Feedback

We look forward to your feedback and will be glad to answer any questions you may have.

"*" indicates required fields

Name

First

Last

Email

Feedback *

Feedback can be issued through the project page:
<https://www.bpl.org/south-end-project/>

Written comments or questions can also be directed to:
Priscilla Foley
Director of Neighborhood Services
617-859-2233
pfoley@bpl.org

Mayor Michelle Wu

BOSTON PUBLIC LIBRARY

utile

City of Boston Public Facilities

39

THANK YOU!



LIBRARY PARK TREE PROTECTION ZONES

- Tree protection
- Tree to monitor
Additional oversight due to proximity to construction

