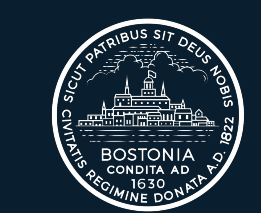




SOUTH END BRANCH LIBRARY

Community Meeting
May 19th, 2026



Mayor Michelle Wu



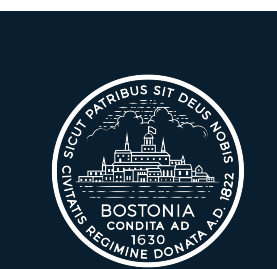
utile



City of Boston
Public Facilities

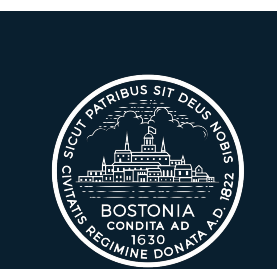
AGENDA

- Introductions and Objectives
- Previous Community Meetings Summary
- Estimated Project Timeline
- Current City Service Vehicle Access
- Proposed Alley #510 Layout
- Branch Exterior Design Facing Alley #510
- Operational Changes to Alley #510



PREVIOUS COMMUNITY MEETINGS

- Jan 8, 2024 Community Meeting #1
 - Overview of engagement process and timeline
 - History of the branch location and current building design
 - Core branch library program review
- Feb 12, 2024 Community Meeting #2
 - Proposed South End Library building program
 - Site Observations
 - Test Fits
- Jun 12, 2024 Community Meeting #3
 - Conceptual Layout of Building Program
 - Space-by-space Review of Program
 - Preliminary Massing
- Dec 10, 2024 Community Meeting #4
 - Library Park Impacts
 - Progress Floor Plans
 - Project Sustainability Initiatives
- Feb 10, 2025 Community Meeting #5
 - Progress Floor Plans
 - Exterior Design Concept Introduction
 - Interior Design Concept Introduction
- May 28, 2025 Community Meeting #6
 - Progress Floor Plans
 - Progress Exterior Design
 - Progress Interior Design



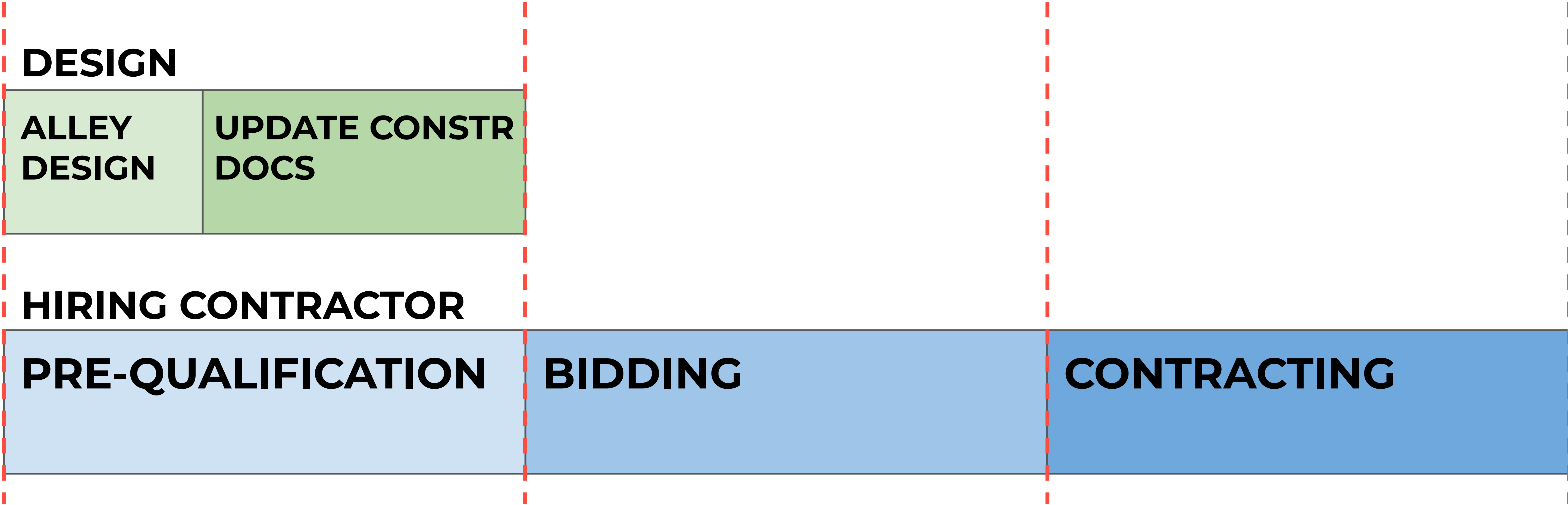
ESTIMATED PROJECT TIMELINE

Spring -
Summer
2026

Fall 2026

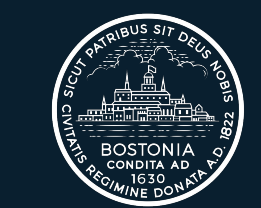
Winter 2026

Spring 2027



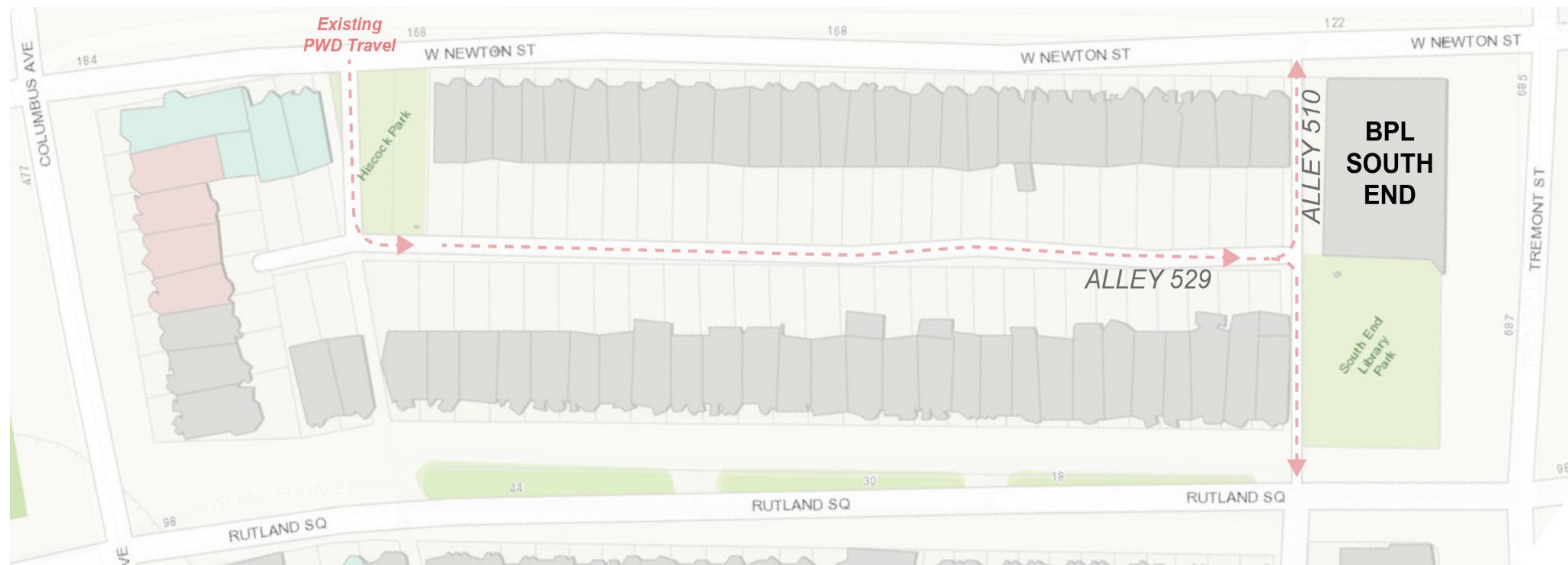
↓ CONSTRUCTION ↓

Construction Duration:
27 months

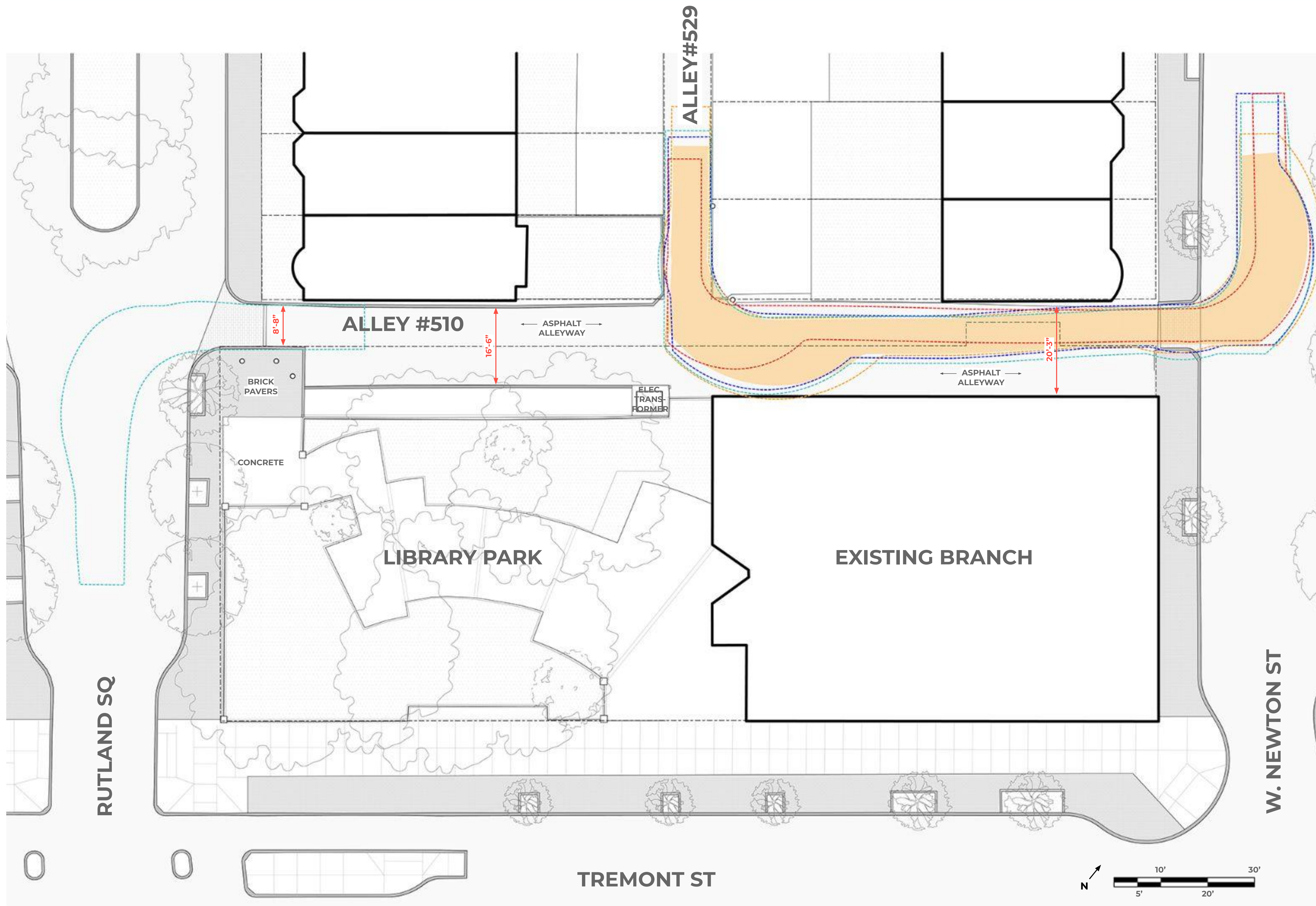


SOUTH END LIBRARY STREETS DESIGN TRADE-OFFS

- The ground floor footprint of the library extends approximately 5 feet into [Alley 510](#) which runs behind the library, while staying within the BPL property lines. Alley 510 is connected perpendicularly to [Alley 529](#) which is serviced by Public Works vehicles for the collection of solid waste and recycling. Today, sanitation vehicles service Alley 529 via West Newton Street, and exit via Alley 510 via both West Newton Street and Rutland Square.



CURRENT CITY SERVICE VEHICLE ACCESS



Public Works Trucks



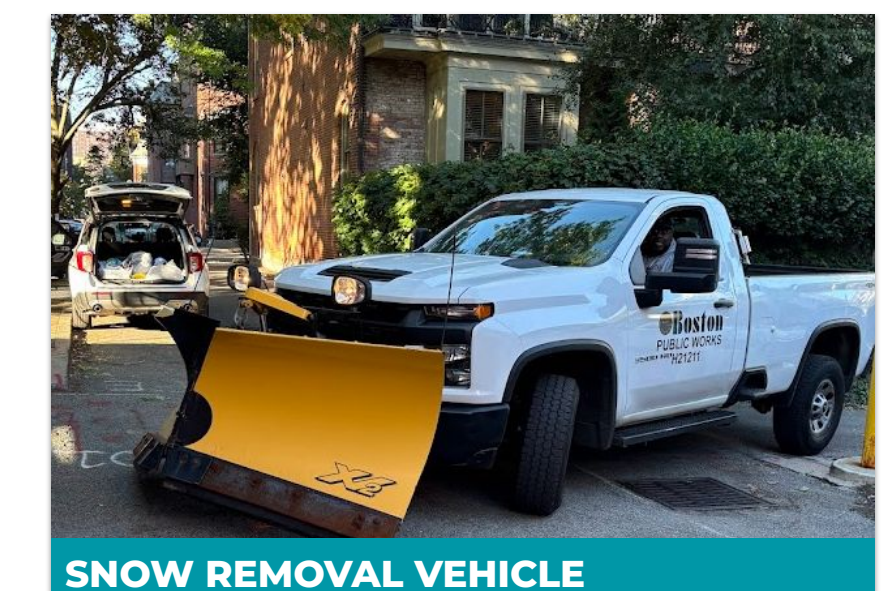
COMPOST COLLECTION VEHICLE



STREET SWEEPING VEHICLE



TRASH / RECYCLING VEHICLE



SNOW REMOVAL VEHICLE

* Shaded region on site plan represents wheel location

Color dashed lines represent the bumpers of the vehicles



Mayor Michelle Wu



utile

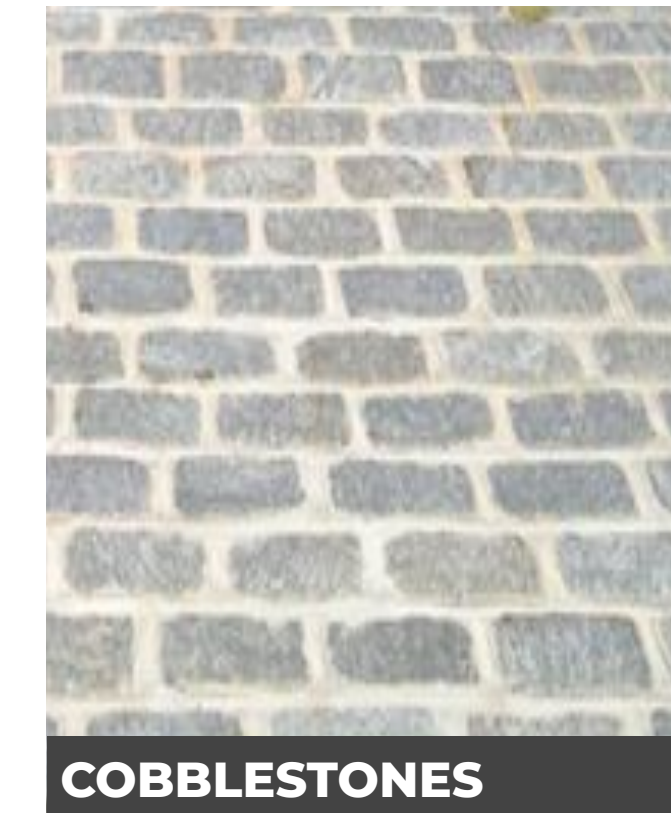


City of Boston Public Facilities

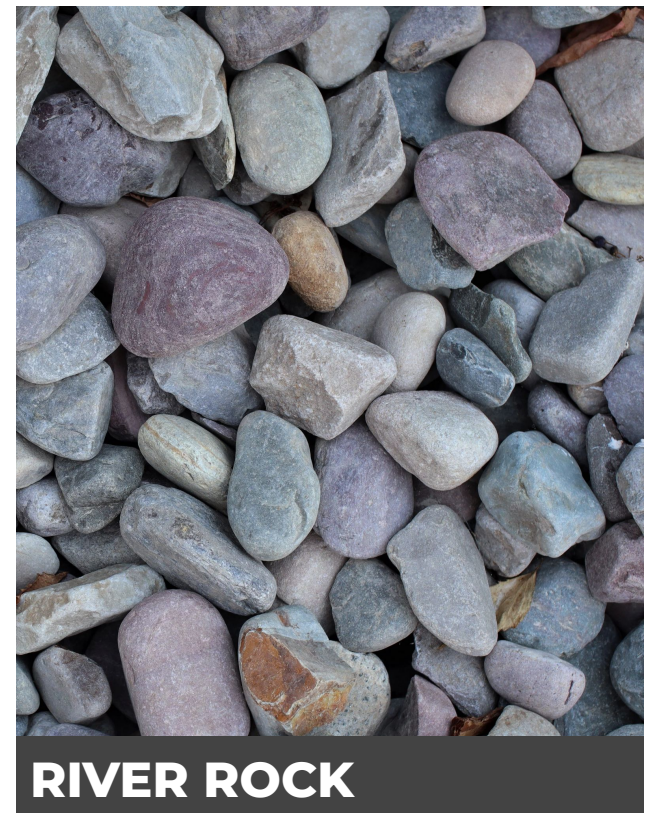
PROPOSED ALLEY #510 LAYOUT - OPTION 1



Alley Materials



COBBLESTONES



RIVER ROCK

Public Works Trucks



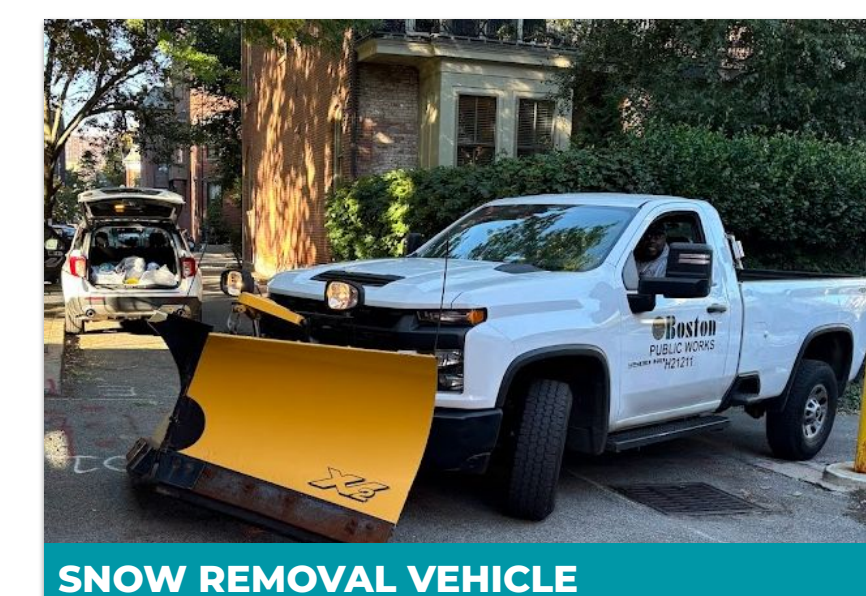
COMPOST COLLECTION VEHICLE



STREET SWEEPING VEHICLE



TRASH / RECYCLING VEHICLE



SNOW REMOVAL VEHICLE

* Shaded region on site plan represents wheel location

Color dashed lines represent the bumpers of the vehicles



Mayor Michelle Wu

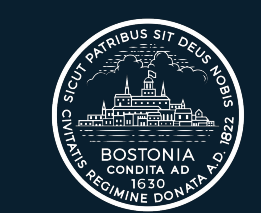


utile



City of Boston Public Facilities

LIBRARY BRANCH EXTERIOR DESIGN AT ALLEY #510 - OPTION 1



Mayor Michelle Wu



utile



City of Boston
Public Facilities

ALLEY #510 LAYOUT - OPTION 2



Public Works Trucks



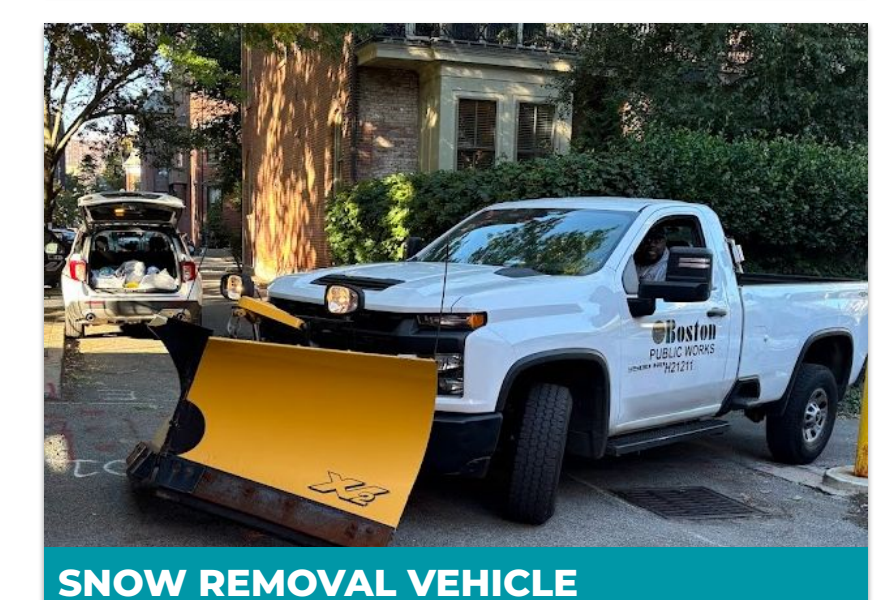
COMPOST COLLECTION VEHICLE



STREET SWEEPING VEHICLE



TRASH / RECYCLING VEHICLE



SNOW REMOVAL VEHICLE

* Shaded region on site plan represents wheel location

Color dashed lines represent the bumpers of the vehicles



Mayor Michelle Wu



City of Boston Public Facilities

LIBRARY BRANCH EXTERIOR DESIGN AT ALLEY #510 - OPTION 2



Mayor Michelle Wu



utile



City of Boston
Public Facilities

ALLEY #510 LAYOUT - OPTION 3



Public Works Trucks



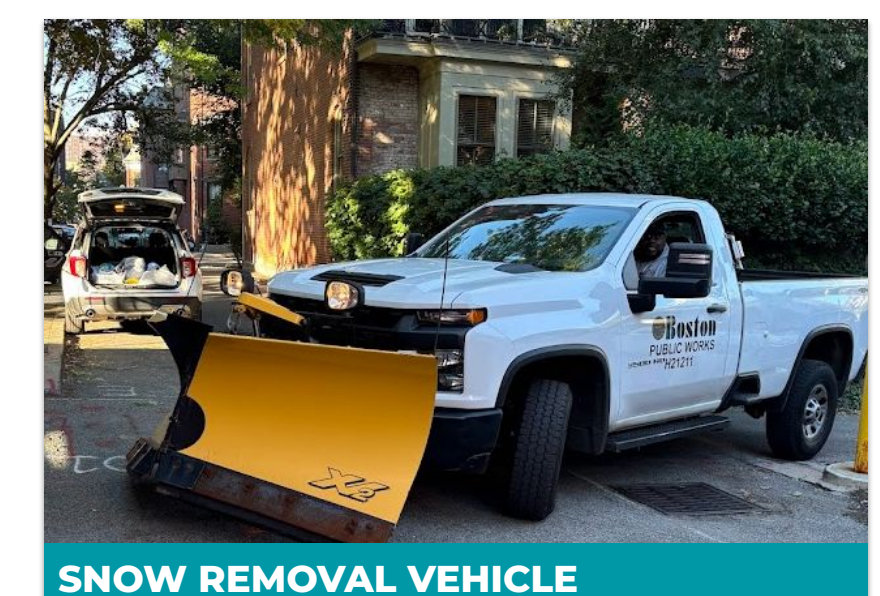
COMPOST COLLECTION VEHICLE



STREET SWEEPING VEHICLE



TRASH / RECYCLING VEHICLE



SNOW REMOVAL VEHICLE

* Shaded region on site plan represents wheel location

Color dashed lines represent the bumpers of the vehicles



Mayor Michelle Wu

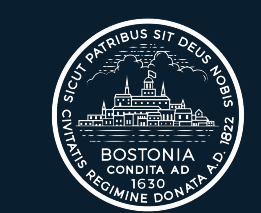


utile



City of Boston
Public Facilities

LIBRARY BRANCH EXTERIOR DESIGN AT ALLEY #510 - OPTION 3



Mayor Michelle Wu

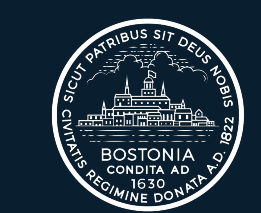


utile



City of Boston
Public Facilities

LIBRARY BRANCH EXTERIOR DESIGN AT LIBRARY PARK



Mayor Michelle Wu



utile



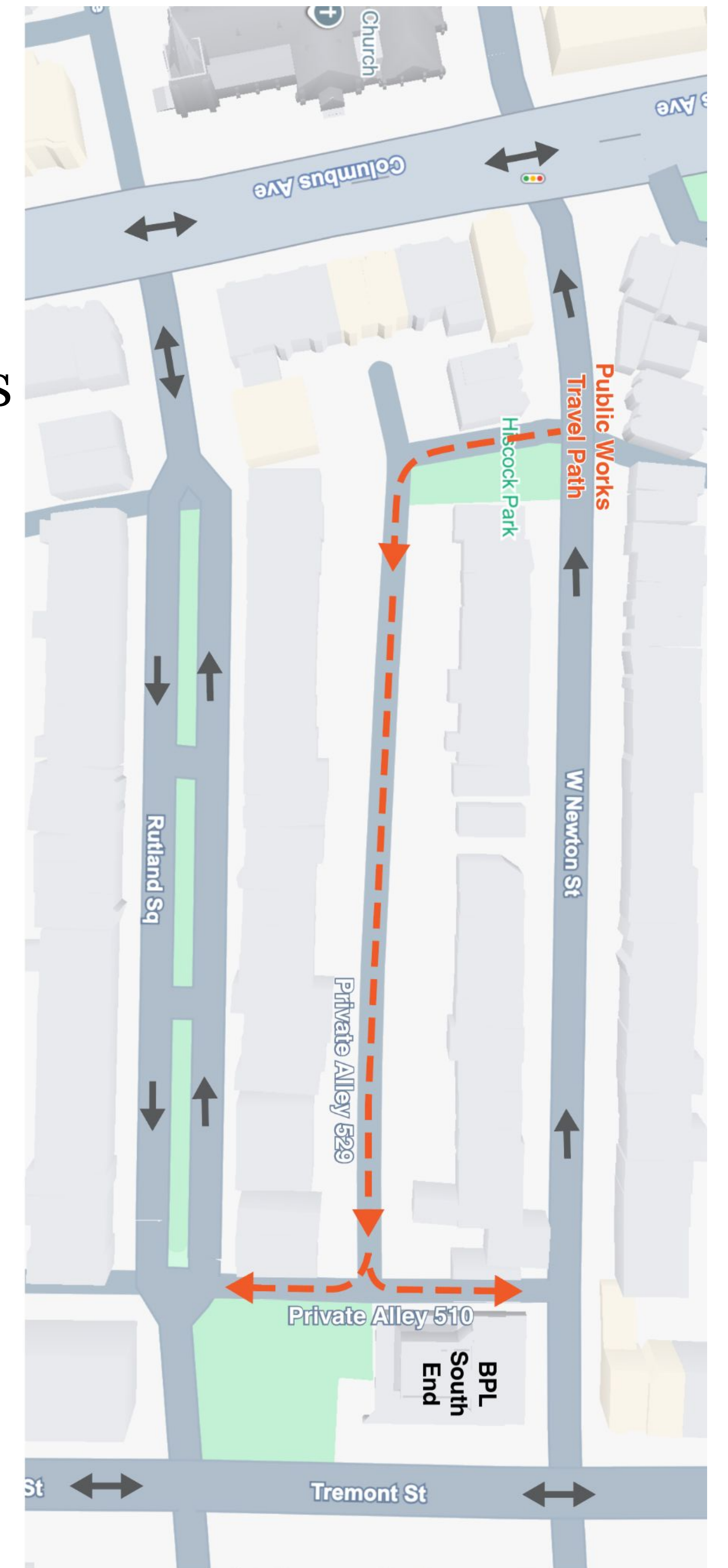
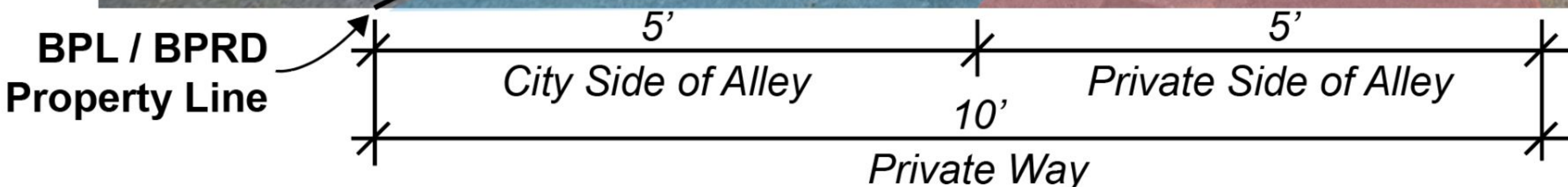
City of Boston
Public Facilities

OPERATIONAL CHANGES TO PUBLIC ALLEY 510

- 1. One Way:** Private Alley 510 will become one-way to minimize conflicts.
- 2. Signage:** Add No Stopping signage for fire access, public works services and neighborhood access.
- 3. Designation:** Add the 'Open to Public Travel' designation to the alley. The alley is already open to public travel, as residents along Private Alley 529 pass through, but the designation adds clarity.



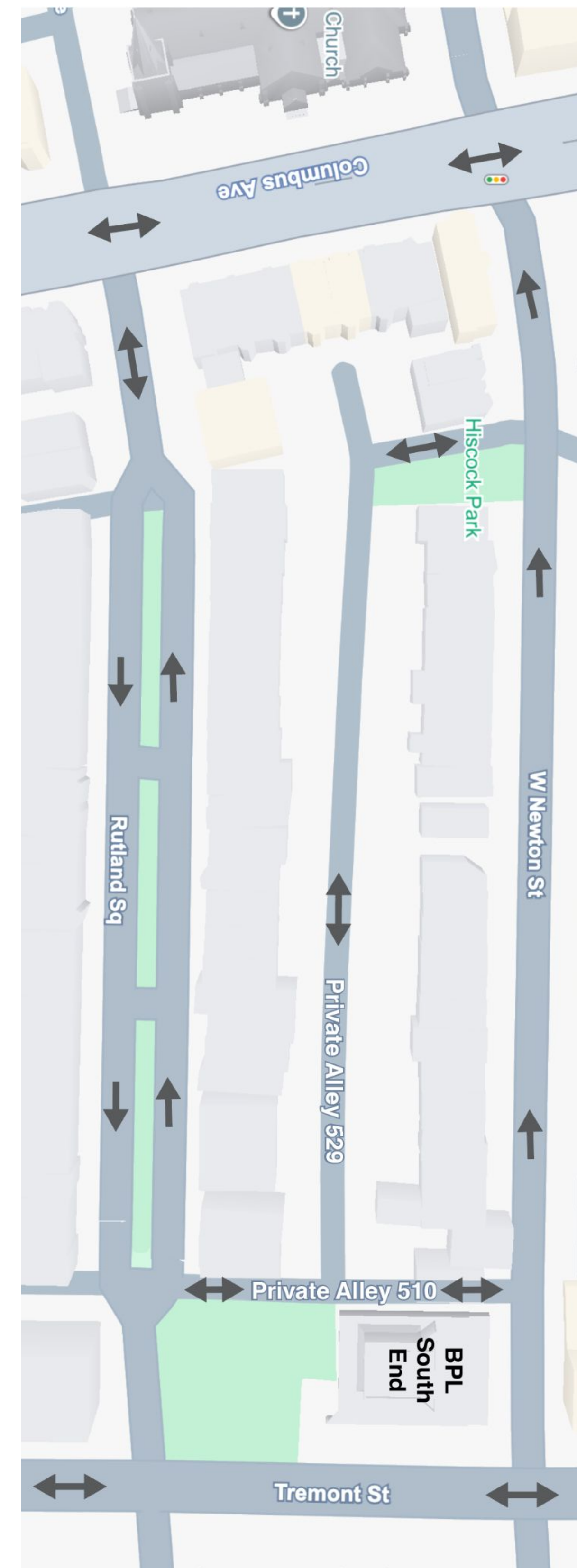
Private Alley 510 and Ownership



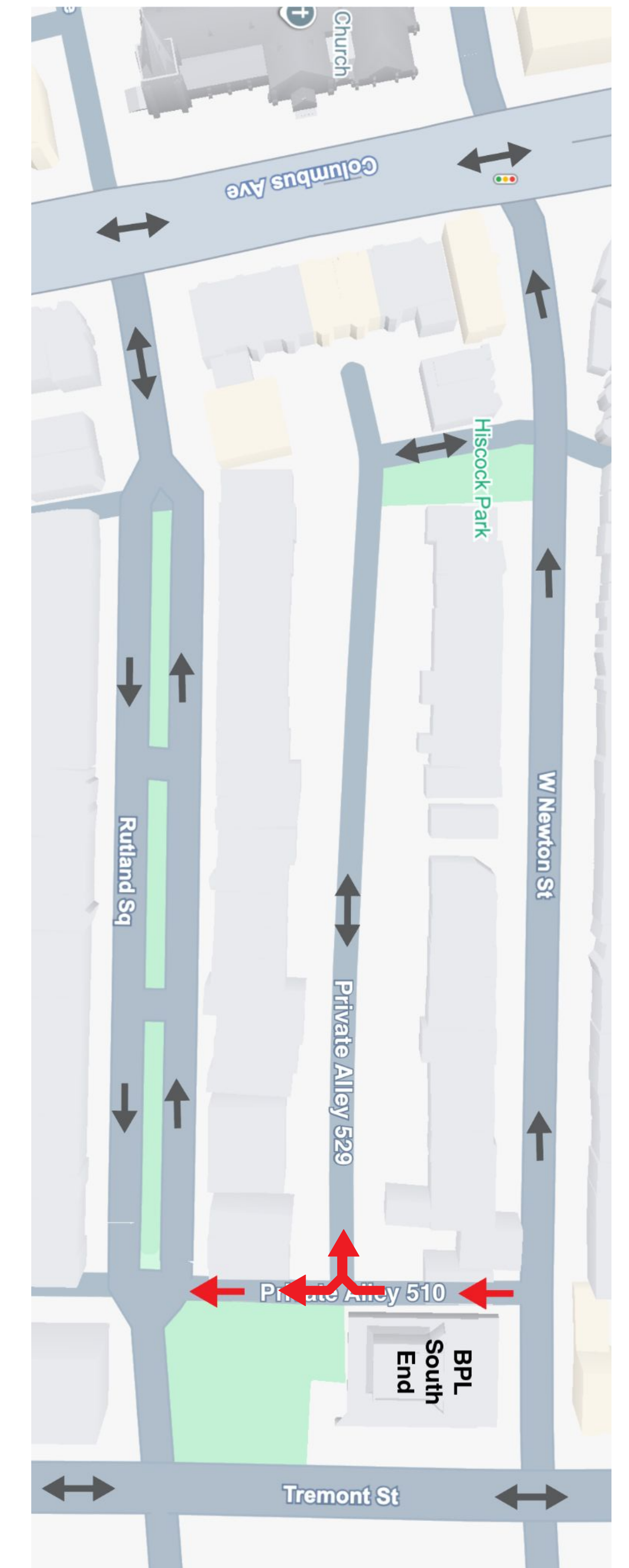
Private Alley 510 + Current Public Works Flow

ONE-WAY - PUBLIC ALLEY 510

- Private Alley 510 becomes one-way from West Newton to Rutland Square (Do Not Enter at Rutland Square).
- No Left Turn/Do Not Enter, Right Turn Only from Alley 529 to Alley 510.



Existing Traffic Flows



Proposed Traffic Flows