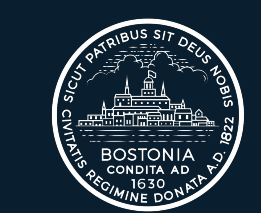




SOUTH END BRANCH LIBRARY ALLEY DESIGN OPTIONS - PRE-READ

For Community Meeting on
May 19th, 2026



Mayor Michelle Wu



utile



City of Boston
Public Facilities

AGENDA

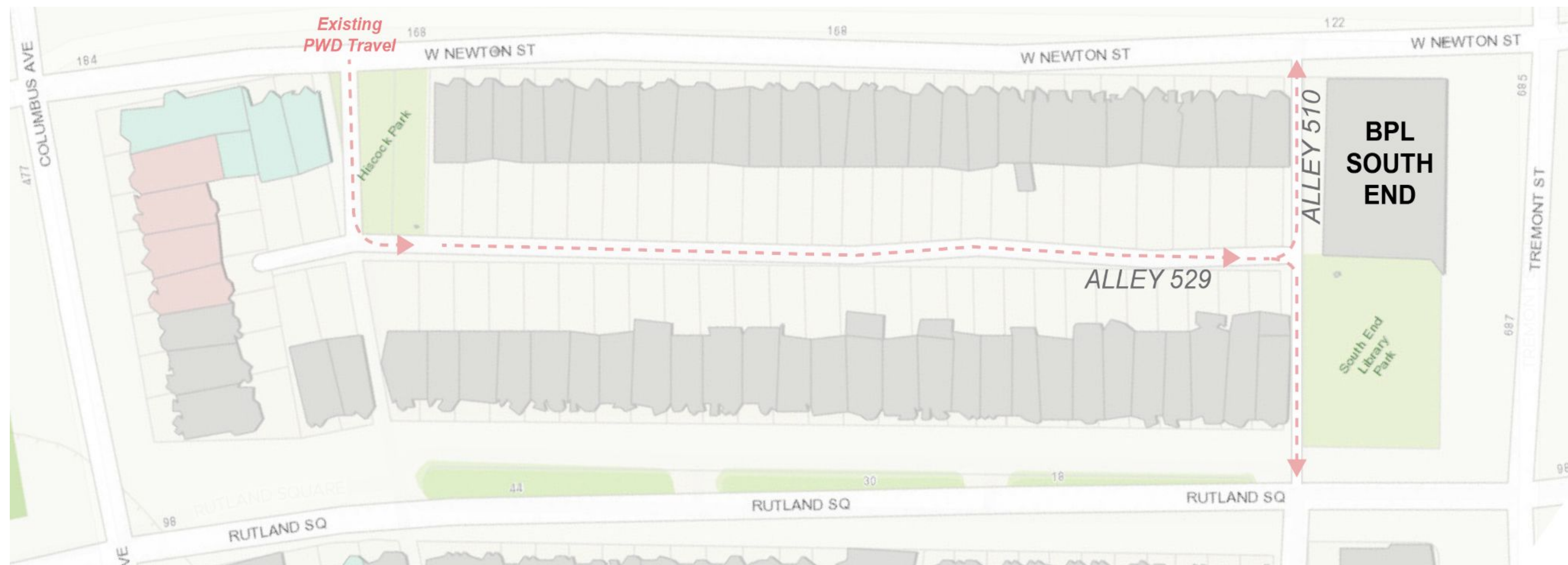
- Introductions and Objectives
- Previous Community Meetings Summary
- Estimated Project Timeline
- Current City Service Vehicle Access
- Proposed Alley #510 Layout
- Branch Exterior Design Facing Alley #510
- Operational Changes to Alley #510

**PRE-READ
MATERIALS
INCLUDE**

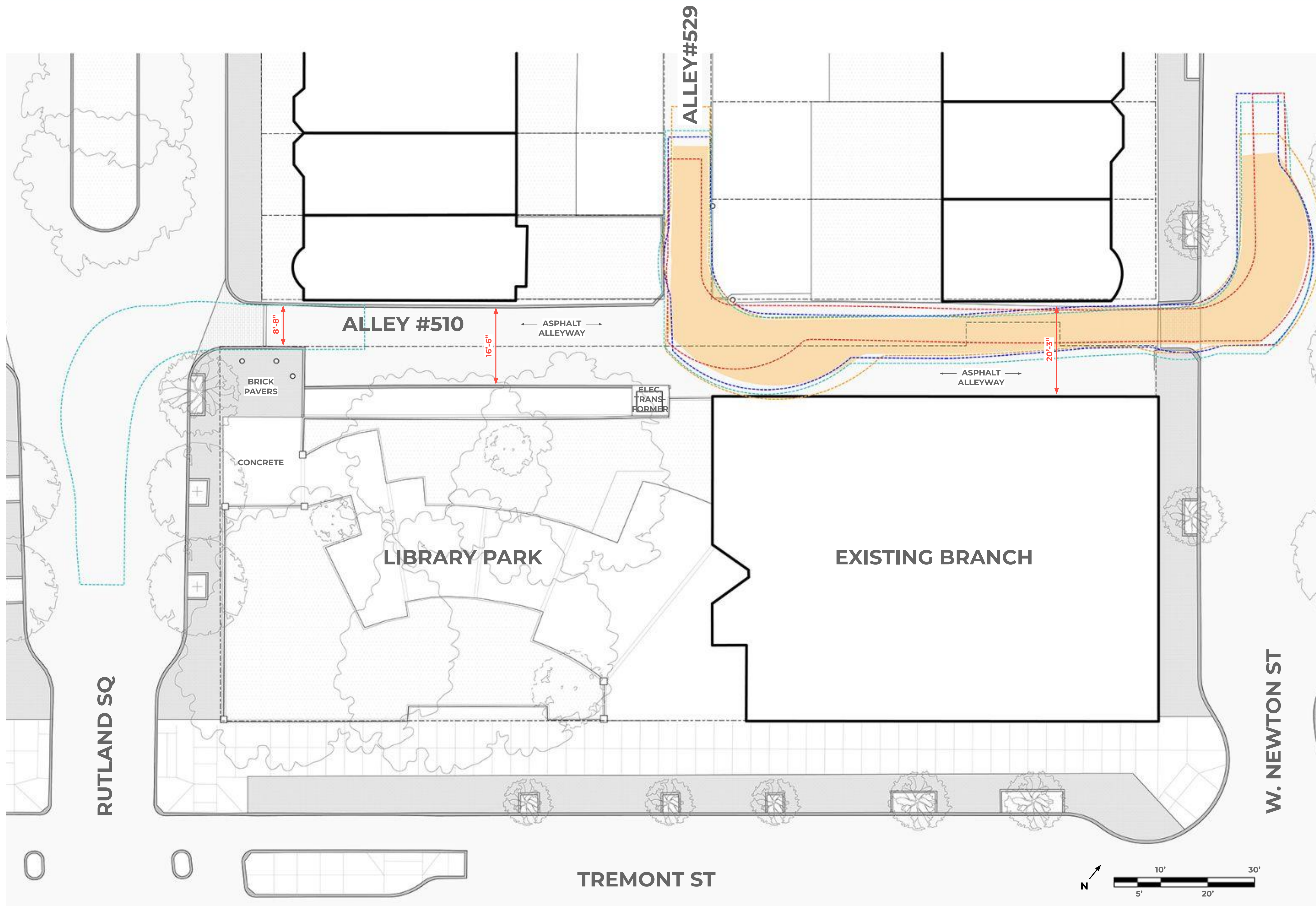


SOUTH END LIBRARY STREETS DESIGN TRADE-OFFS

- The ground floor footprint of the library extends approximately 5 feet into [Alley 510](#) which runs behind the library, while staying within the BPL property lines. Alley 510 is connected perpendicularly to [Alley 529](#) which is serviced by Public Works vehicles for the curbside collection of solid waste and recycling. Today, sanitation vehicles service Alley 529 via West Newton Street, and exit via Alley 510 via both West Newton Street and Rutland Square. With the new library design, large vehicles will need to turn right out of Alley 529 into Alley 510. This slide deck provides design options for Alley 510 related to that change.



CURRENT CITY SERVICE VEHICLE ACCESS



Public Works Trucks



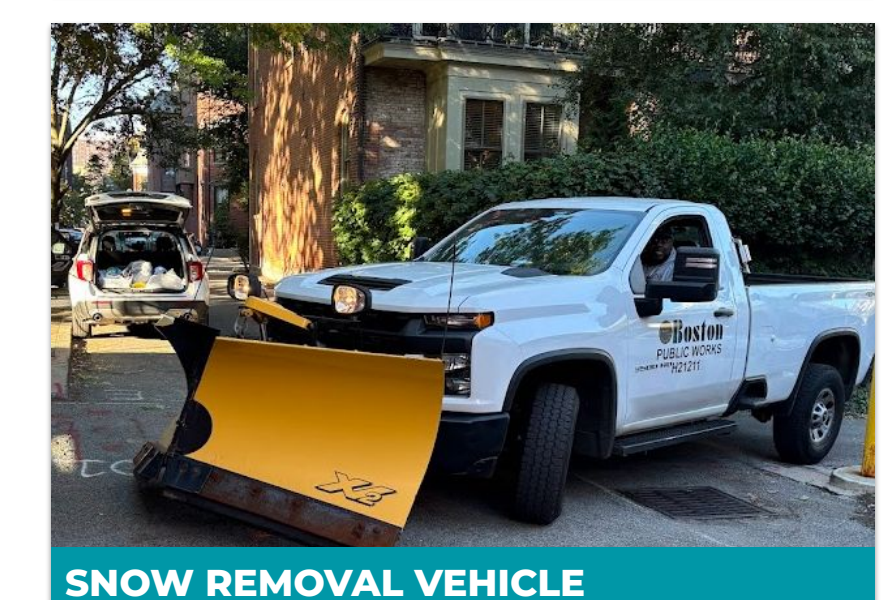
COMPOST COLLECTION VEHICLE



STREET SWEEPING VEHICLE



TRASH / RECYCLING VEHICLE



SNOW REMOVAL VEHICLE

* Shaded region on site plan represents wheel location

Color dashed lines represent the bumpers of the vehicles



Mayor Michelle Wu



utile

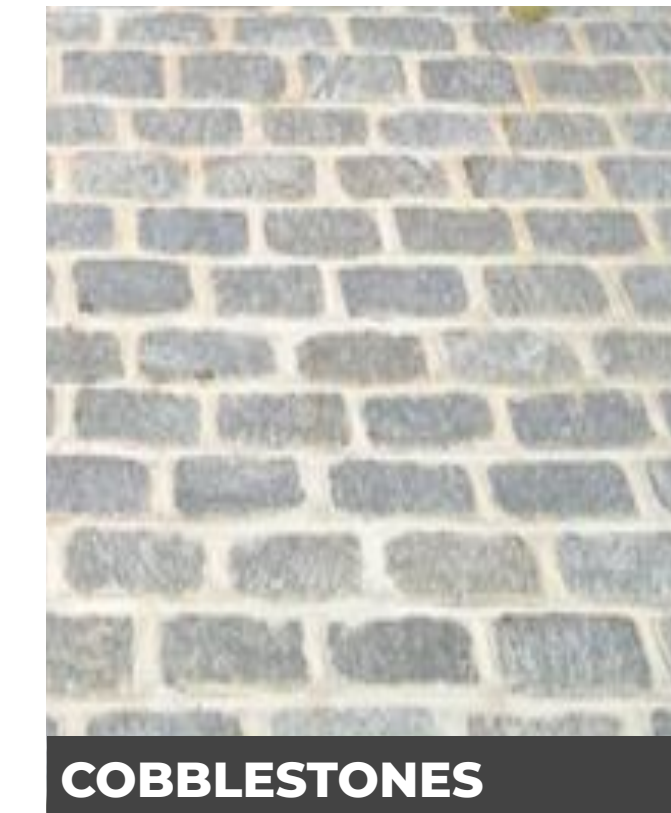


City of Boston Public Facilities

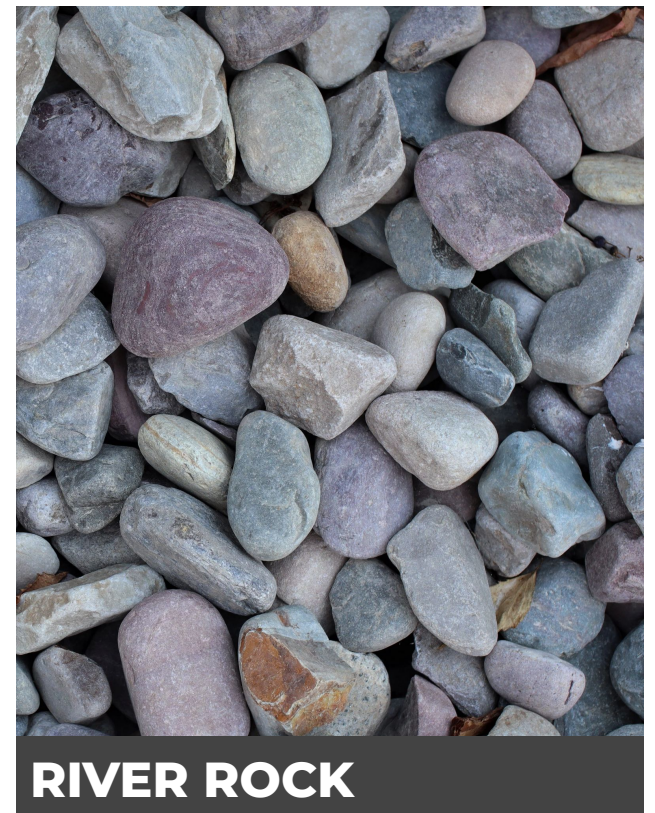
PROPOSED ALLEY #510 LAYOUT - OPTION 1



Alley Materials



COBBLESTONES



RIVER ROCK

Public Works Trucks



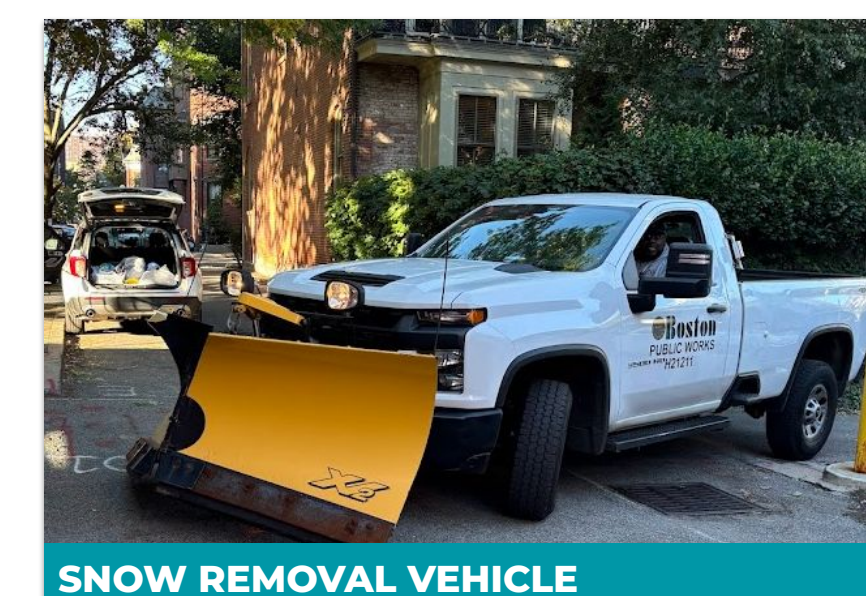
COMPOST COLLECTION VEHICLE



STREET SWEEPING VEHICLE



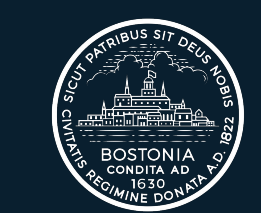
TRASH / RECYCLING VEHICLE



SNOW REMOVAL VEHICLE

* Shaded region on site plan represents wheel location

Color dashed lines represent the bumpers of the vehicles



Mayor Michelle Wu



utile



City of Boston
Public Facilities

ALLEY #510 LAYOUT - OPTION 2



* This option widens the alley and curb cut at Rutland Square, but it also places the transformer within the boundaries of the existing park and requires tree **relocation and removal**. For these reasons, it is not preferred by the City & design team.

Public Works Trucks



COMPOST COLLECTION VEHICLE



STREET SWEEPING VEHICLE



TRASH / RECYCLING VEHICLE



SNOW REMOVAL VEHICLE

* Shaded region on site plan represents wheel location

Color dashed lines represent the bumpers of the vehicles



Mayor Michelle Wu



utile



City of Boston
Public Facilities

ALLEY #510 LAYOUT - OPTION 3



* This option keeps the existing alley conditions, but it also places the transformer partially within the boundaries of the existing park and requires tree relocation.

Public Works Trucks



COMPOST COLLECTION VEHICLE



STREET SWEEPING VEHICLE



TRASH / RECYCLING VEHICLE



SNOW REMOVAL VEHICLE

* Shaded region on site plan represents wheel location

Color dashed lines represent the bumpers of the vehicles



Mayor Michelle Wu



utile



City of Boston
Public Facilities